

STATE OF EMERGENCY 2



MATURE 17+
M
CONTENT RATED BY
ESRB

 DC Studios


SOUTHPEAK
INTERACTIVE

WARNING: READ BEFORE USING YOUR PLAYSTATION®2 COMPUTER ENTERTAINMENT SYSTEM.

A very small percentage of individuals may experience epileptic seizures when exposed to certain light patterns or flashing lights. Exposure to certain patterns or backgrounds on a television screen or while playing video games, including games played on the PlayStation 2 console, may induce an epileptic seizure in these individuals. Certain conditions may induce previously undetected epileptic symptoms even in persons who have no history of prior seizures or epilepsy. If you, or anyone in your family, has an epileptic condition, consult your physician prior to playing. If you experience any of the following symptoms while playing a video game — dizziness, altered vision, eye or muscle twitches, loss of awareness, disorientation, any involuntary movement, or convulsions — **IMMEDIATELY** discontinue use and consult your physician before resuming play.

WARNING TO OWNERS OF PROJECTION TELEVISIONS:

Do not connect your PlayStation 2 console to a projection TV without first consulting the user manual for your projection TV, unless it is of the LCD type. Otherwise, it may permanently damage your TV screen.

USE OF UNAUTHORIZED PRODUCT:

The use of software or peripherals not authorized by Sony Computer Entertainment America may damage your console and/or invalidate your warranty. Only official or licensed peripherals should be used in the controller ports or memory card slots.

HANDLING YOUR PLAYSTATION 2 FORMAT DISC:

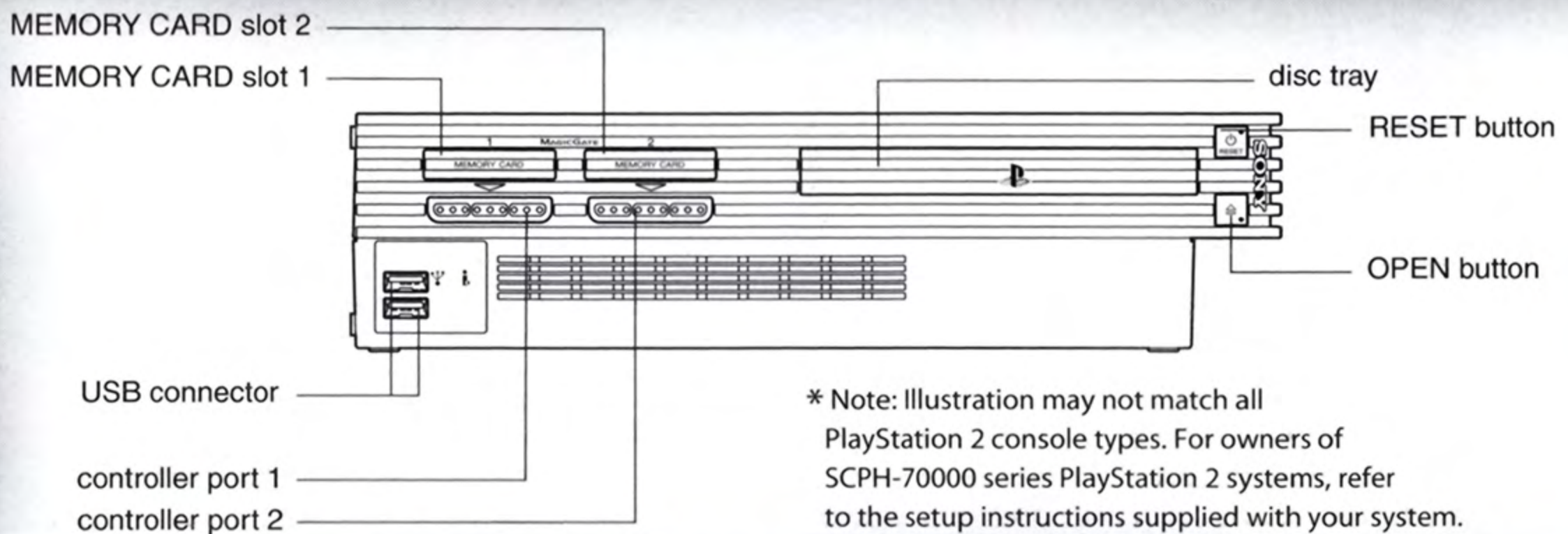
- This disc is intended for use only with PlayStation 2 consoles with the NTSC U/C designation.
- Do not bend it, crush it or submerge it in liquids.
- Do not leave it in direct sunlight or near a radiator or other source of heat.
- Be sure to take an occasional rest break during extended play.
- Keep this compact disc clean. Always hold the disc by the edges and keep it in its protective case when not in use. Clean the disc with a lint-free, soft, dry cloth, wiping in straight lines from center to outer edge. Never use solvents or abrasive cleaners.

STATE OF EMERGENCY 2

CONTENTS

- Getting Started / 2
 - Starting Up / 3
 - The Characters / 4
 - Enemies / 6
- Starting the Game / 7
 - Options Menu / 8
 - Pause Menu / 9
- Screen Layouts / 10
- Movement Control / 12
 - Gang Controls / 13
- Weapon Controls / 13
- Vehicle Controls / 14
- In-Game Items / 15
- Awards & Unlockables / 16
 - Credits / 18

GETTING STARTED



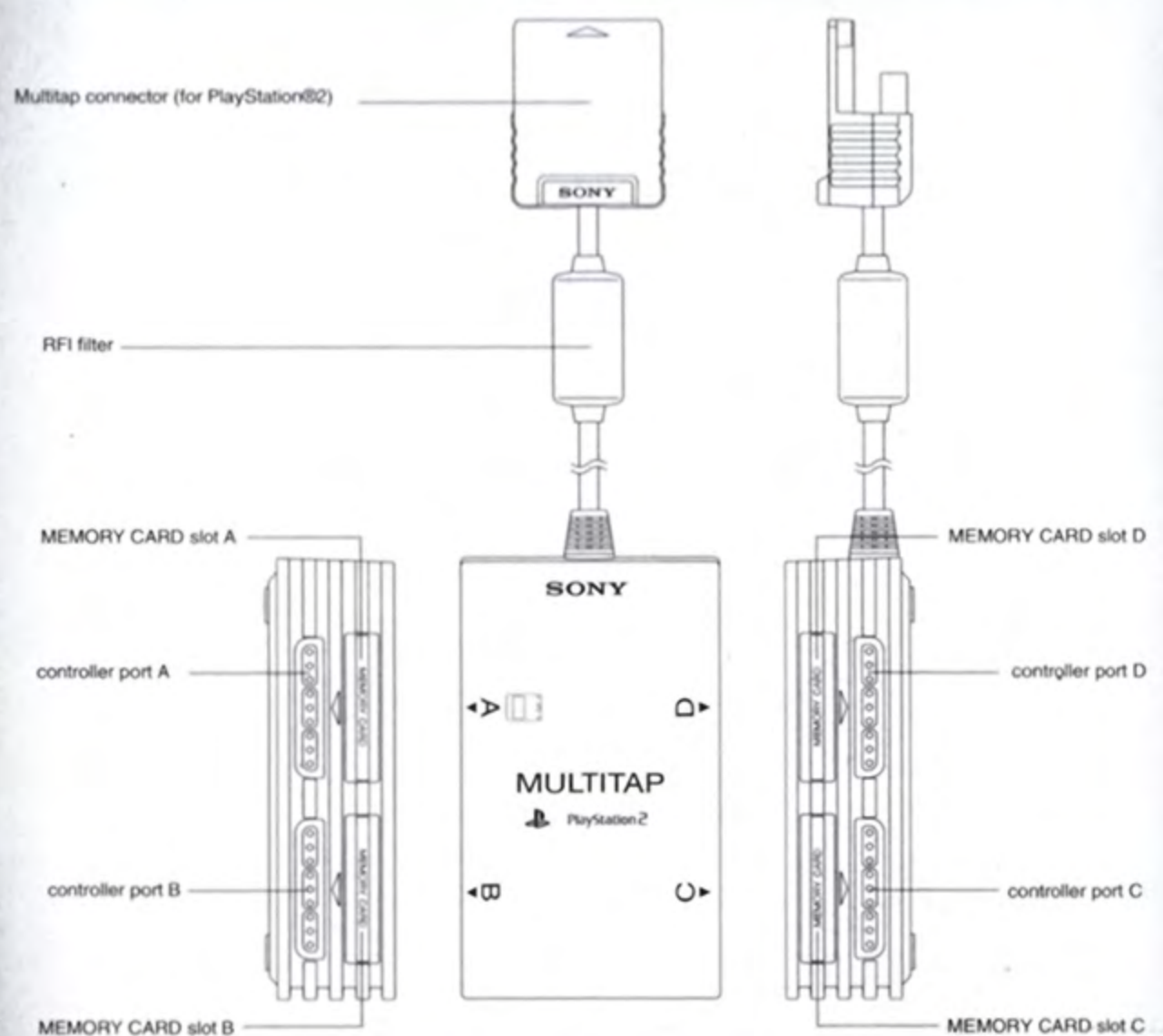
Set up your PlayStation®2 computer entertainment system according to the instructions in its Instruction Manual. Make sure the MAIN POWER switch (located on the back of the console) is turned ON. Press the RESET button. When the power indicator lights up, press the OPEN button and the disc tray will open. Place the STATE OF EMERGENCY 2 disc on the disc tray with the label side facing up. Press the OPEN button again and the disc tray will close. Attach game controllers and other peripherals, as appropriate. Follow on-screen instructions and refer to this manual for information on using the software.

Memory Card (8MB)(for PlayStation®2)

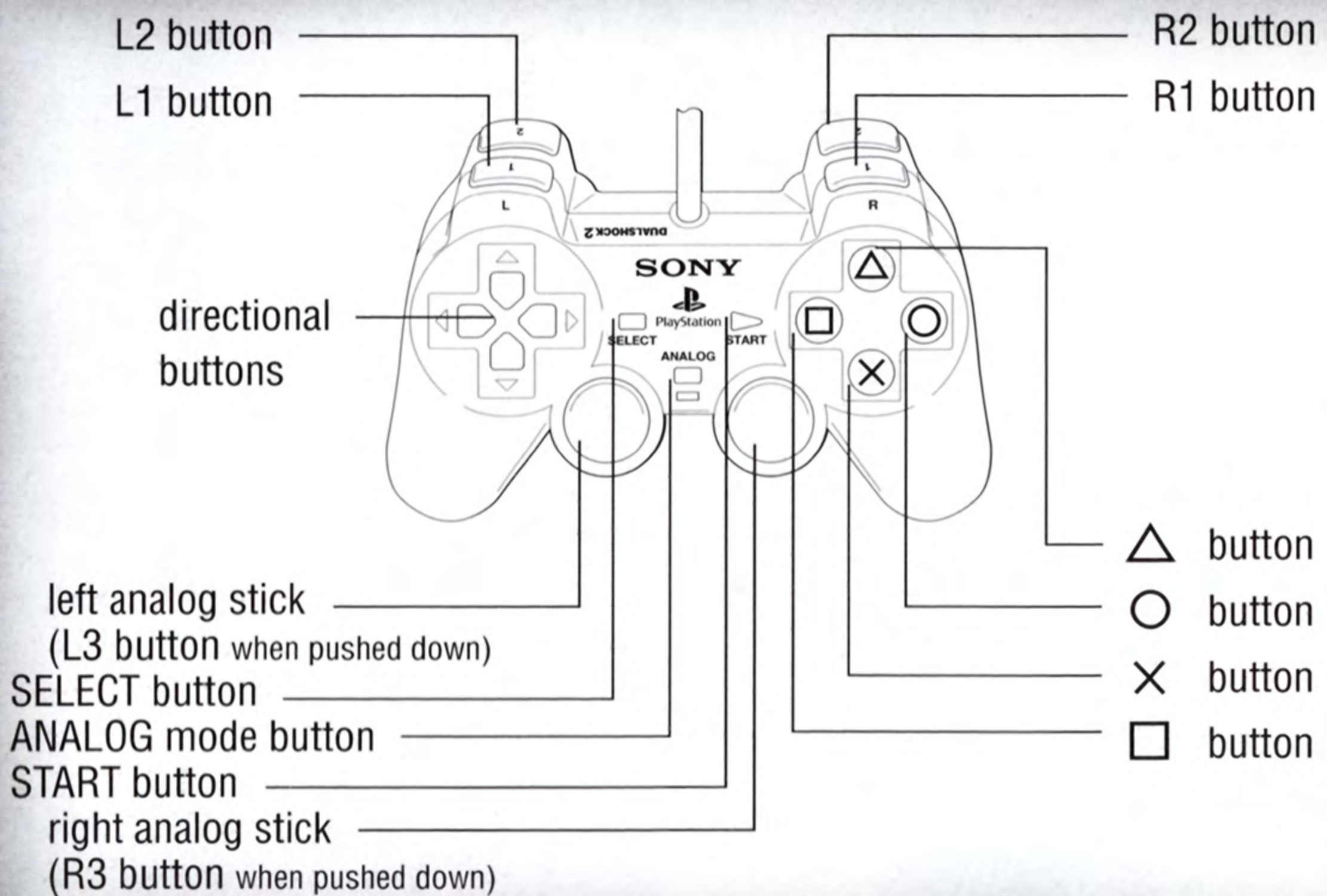
To save game settings and progress, insert a memory card (8MB)(for PlayStation®2) into MEMORY CARD slot 1 of your PlayStation®2 system. You can load saved game data from the same memory card or any memory card (8MB)(for PlayStation®2) containing previously saved games.

Multi Tap

To play modes for 3 or 4 players, insert the Multi Tap (for PlayStation®2) as instructed in the Multi Tap manual.



STARTING UP



STATE OF EMERGENCY 2 is best played with the DUALSHOCK®2 analog controller. The controller should be connected to controller port 1. With this analog controller, the ANALOG mode button and mode indicator are always set to ON, indicating that the controller is in analog mode.

When vibration is ON, the controller will vibrate in response to game events. You can adjust vibration ON/OFF from the GAME SETTINGS MENU.

To exit the game and return to the MAIN MENU during a game, press the START button to display the PAUSE MENU and then select QUIT GAME.

CONTROLLERS/ACCESSORIES

Before starting play, make sure you have a DUALSHOCK®2 analog controller inserted into controller port 1. Do not insert or remove controllers or accessories when the power is turned on.

THE CHARACTERS

ROY MACNEIL ('MAC')



Mac is an ex-cop, ex-revolutionary and soon to be ex-con. He was an uncompromising Capitol City detective when the Corporation first took over and began replacing the existing police force with its ruthless Enforcers. Out of a job, and seething with resentment towards the Corporation, he joined the revolutionary group known as 'Freedom' and played a crucial role in the overthrow of the first Corporation. When the Corporation seized control back and split Capitol City into zones, MacNeil was one of the first to be rounded up and incarcerated in the newly built JusticeCorp Maximum Security Prison. He's been on Death Row there ever since...

EDDY RAYMONDS ('BULL')



Bull, as he was known to his team-mates, fans and friends (although not to his Corporation bosses), was once a pro footballer. An all-American star, Bull's fall from grace was swift after he refused to participate in a Corporation-sponsored match-fixing scam. He was on his way to prison when the first revolution allowed his escape. Like MacNeil, he ended up working with Freedom and, like MacNeil, his prominent role in the Corporation's temporary overthrow meant he was soon rounded up and left to rot in the Maximum Security prison.



HECTOR SOLDADO ('SPANKY')

Spanky is the leader of the feared Cordova Posse, once the biggest gang in Capitol City's Ghetto Zone. When the Corporation first took control, it targeted the gangs as a major threat and Spanky found himself an unlikely Freedom recruit. The price of defeating the Corporation was the supremacy of his beloved Cordova Posse - by the time the Corporation regained control and sealed the Ghetto shut, Spanky's empire had dwindled, but he remained a valuable Freedom contact.



RICKY TRANG ('FREAK')

Freak has been a hacker and criminal since puberty. While in High School, he was orphaned when his parents were 'removed' by a Corporation death squad - he's spent every day since trying to make the Corporation pay. He was running with the Jade Hill gang when Libra saw his potential and signed him up to work with Freedom against the first Corporation. In the years since the revolution failed he's transformed himself into Libra's right-hand man and Freedom's operations director. He's the man with the plan.



ANNA PRICE ('LIBRA')

Libra has been a successful attorney in Capitol City for years. Since the Corporation retook control of the city, she's worked directly for them, oiling the wheels of the bureaucracy which keeps Capitol City running. What they didn't know until now is that she's also spent the last decade as Libra, the leader of terrorist organization Freedom, using her position and influence to engineer ever more daring strikes at the Corporation's infrastructure. Only now it looks like her luck has run out...

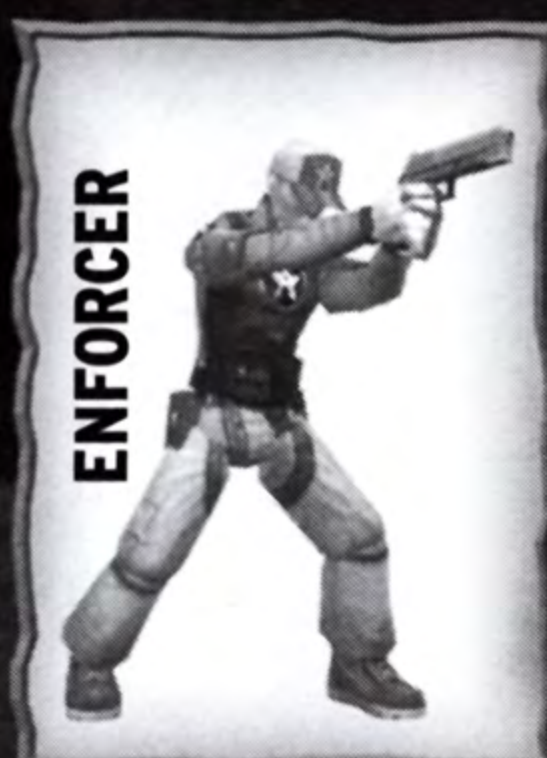
ENEMIES



PRISON GUARD



PRISON ENFORCER



ENFORCER



RIOT ENFORCER



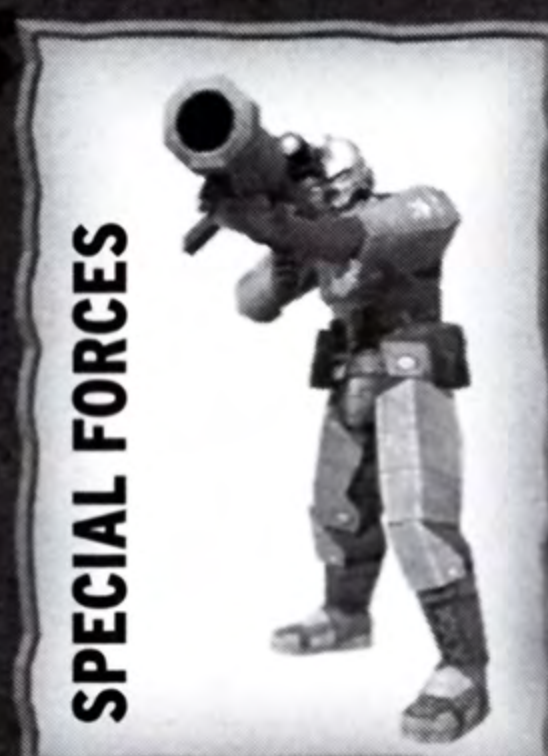
SPECIAL ENFORCER



INFANTRY



RIOT TROOPS



SPECIAL FORCES

PRISON GUARD First on the scene when there's trouble behind bars

PRISON ENFORCER Better armed than their lightweight counterparts, the Prison Enforcer will restore order as brutally as necessary

ENFORCER The bottom-rung, entry-level Corporation Enforcer. Promotion prospects aren't great, but what other job lets you use a baton this much?

RIOT ENFORCER The Corporation's mid-level security force – better equipped and no less likely to use his weapons against a defenseless civilian

SPECIAL ENFORCER The elite force in Corporation internal security. Highly trained, well-equipped and completely ruthless, they never show emotion even when under heavy fire

INFANTRY The lowest-ranking members of the Corporation's army, these guys are poorly equipped cannon fodder

RIOT TROOPS These mid-ranking soldiers have better equipment and weapons, and are better trained than their infantry comrades

SPECIAL FORCES Nothing less than evil fighting machines, they have the best training, equipment and weapons

STARTING THE GAME

Press the START button at the title screen

NEW GAME

Select your profile name and whether you wish to save your game

LOAD GAME

Select a saved game to load

MAIN MENU

START GAME & CONTINUE GAME

Start a new game or continue a saved game

ARCADE

Only two arcade challenges are available at the start of the game with others unlocked as you make progress in the game (see page 16, Awards & Unlockables)

MULTIPLAYER

Select No. of Players: Select the number of players between one and four. Multiplayer allows you to play the game with 2-4 players. Games with 3 players or more will require a multitap (for PlayStation®2) to be inserted into controller port 1

Select Number of Bots: In some modes, Bots can be used in place of human competitors

Select Game type: There are several game types in multiplayer:

Last Man Standing	Who can kill the most people in the shortest time? NB up to 2 players only
Deathmatch	The classic battle; every man for himself
Flag Attack	Grab the flag and hold onto it for as long as possible
Team Deathmatch	Deathmatch, but with multiple players on each side
Battle mode	Fight human opponents with heavy weaponry

(Multiplayer options continued on next page)

Select Arena: Choose the venue for your showdown. Only the Prison Arena is available at the outset. Other arenas are unlocked as you make progress in the game

GAME OPTIONS - All multiplayer modes aside from Last Man Standing have a range of game options:

Time - Choose a time limit for your game from 3 minutes to Infinite

Score limit - Choose a score limit for your game from 10 to Infinite

Difficulty - This governs the skill of the AI competitors, or Bots.

Choose from Easy, Normal, and Hard

Weapon Set - This setting allows you to restrict which weapons appear in the game. Choose from All, Pistols, Rapid Fire, and Explosives

Default - Use this setting to play a game with default settings

OPTIONS MENU

AUDIO & VIDEO SETTINGS

Sound effects volume - use ← & → on the directional buttons to adjust volume

Music volume - use ← & → on the directional buttons to adjust volume

Speaker settings - use ← & → on the directional buttons to adjust settings

Subtitles - use ← & → on the directional buttons to turn subtitles ON/OFF

Widescreen - use ← & → on the directional buttons to turn widescreen ON/OFF

Vertical split - use ← & → on the directional buttons to select a vertical screen split for 2-player games

Enemy Markers - use ← & → on the directional buttons to turn enemy markers ON/OFF

Screen position - Select this option with the X button and use the directional buttons to choose the screen position

Default - select default to return all settings to default values

GAME SETTINGS

Camera horizontal - use ← & → on the directional buttons to adjust between normal and inverted

Camera vertical - use ← & → on the directional buttons to adjust between normal and inverted

Aim sensitivity - use ← & → on the directional buttons to adjust aim sensitivity

Weapon swap - use ← & → on the directional buttons to adjust between automatic and manual weapon swapping

Vibration - use ← & → on the directional buttons to turn vibration ON & OFF

(continued)

Autosave - use ← & → on the directional buttons to enable and disable autosave

View control layout - select to view the controller layouts

Default - select default to return all settings to default values

CREDITS

Select credits to see a list of the people who created the game. Press the X button or the START button to quit back to the options screen

MAIN MENU

Select this option to return to the Main Menu. You can also return to the Main Menu by pressing the TRIANGLE button

PAUSE MENU

CONTINUE

Return to the game

OBJECTIVES

Every level has both primary and optional objectives:

Primary objective - this is your current primary objective for the level (e.g. escape from the prison)

Optional objectives - every level has a number of optional objectives:

Time challenge - complete the level within a set time

Damage challenge - cause a certain amount of damage

Mystery challenge - there is a third objective (consistent in each level) that you will have to discover for yourself!

SUBTITLE TEXT

This displays all of the dialogue in the level that has been heard so far. Press ↑ & ↓ on the directional buttons to scroll up and down

OPTIONS

Go to the options menu

RESTART

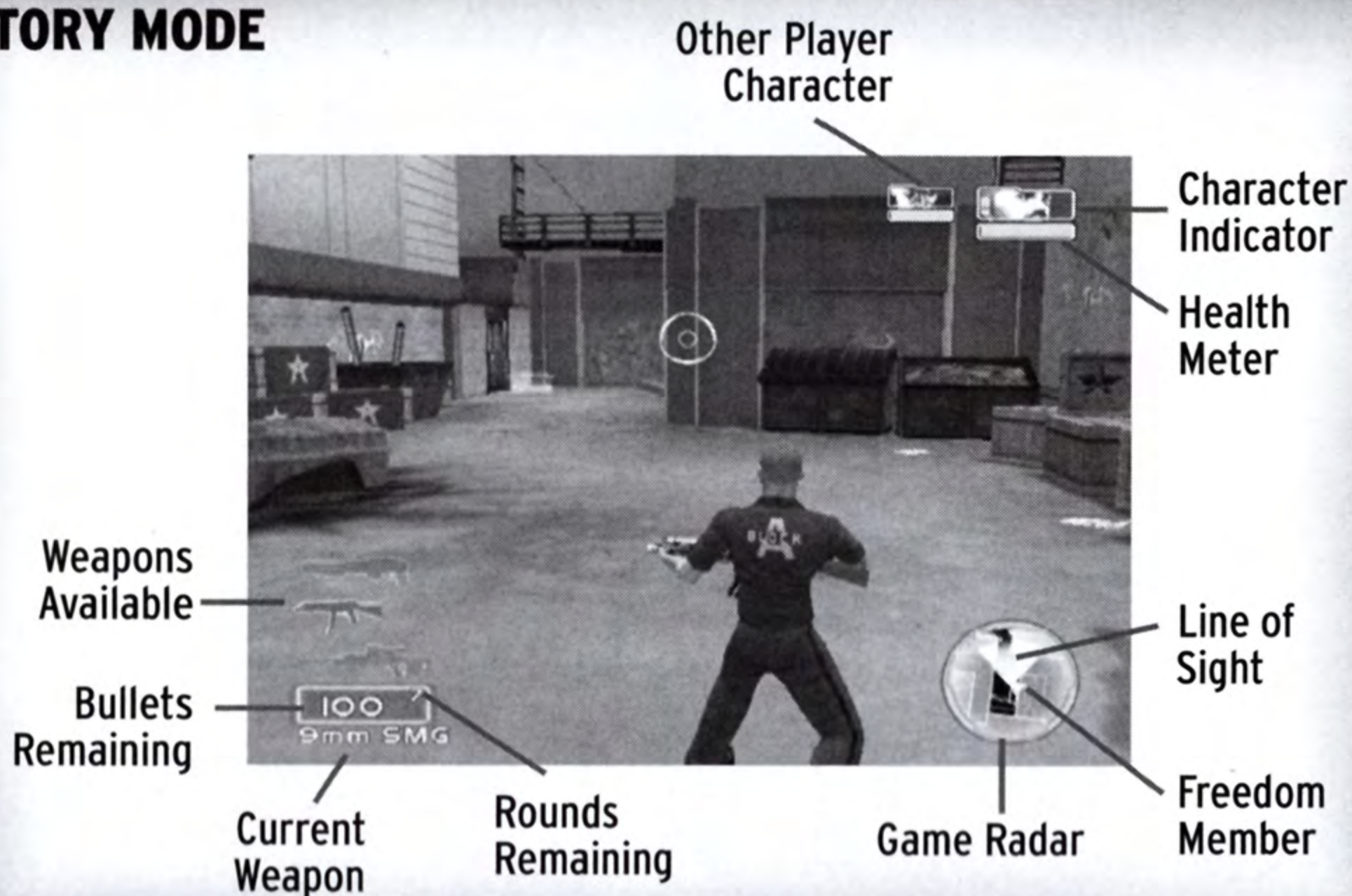
Restart the game

EXIT

Select to quit the game

SCREEN LAYOUTS

STORY MODE



CHARACTER INDICATOR & HEALTH METER

The character you are currently using can be seen in the top right of the screen at all times in-game. Your character's health is indicated by the blue bar directly beneath the image of your currently selected character; as it diminishes from right to left, your health decreases. When it is dangerously low, the health bar will change to red. When it is completely empty the game is over. In missions where another character is present, their image can be seen directly to the left of your character. Your buddy's health is not affected while they are not under your control.

GAME RADAR

This radar helps you to navigate around the city. It contains several elements:

Objective – the location of your current objective is indicated with a white cross

Line of sight – the player's current line of sight is indicated by the grey triangular segment of the radar

Enemies – not all enemies are indicated on the radar, but in specific missions enemies are shown as a red marker

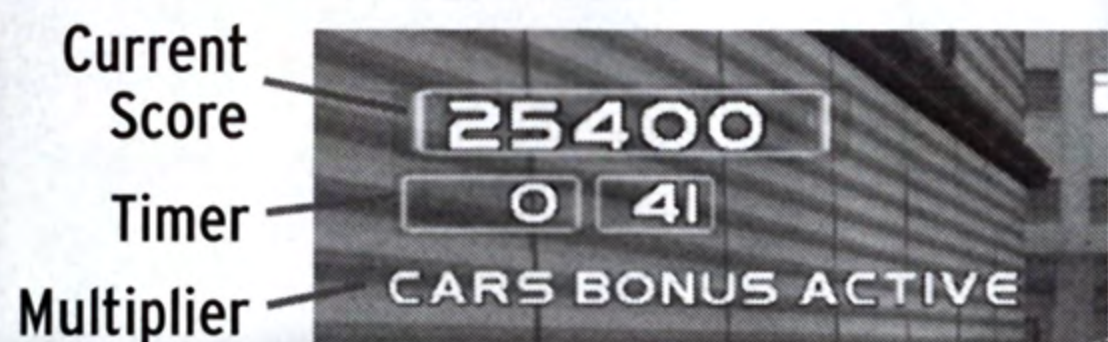
Freedom members – members of Freedom are indicated on the radar as a green triangle

Allies and Gang members – those characters fighting on behalf of Freedom are indicated on the radar with a green dot

WEAPON & AMMO INDICATOR

This indicates the weapon you are currently holding, as well as the number of bullets and clips remaining.

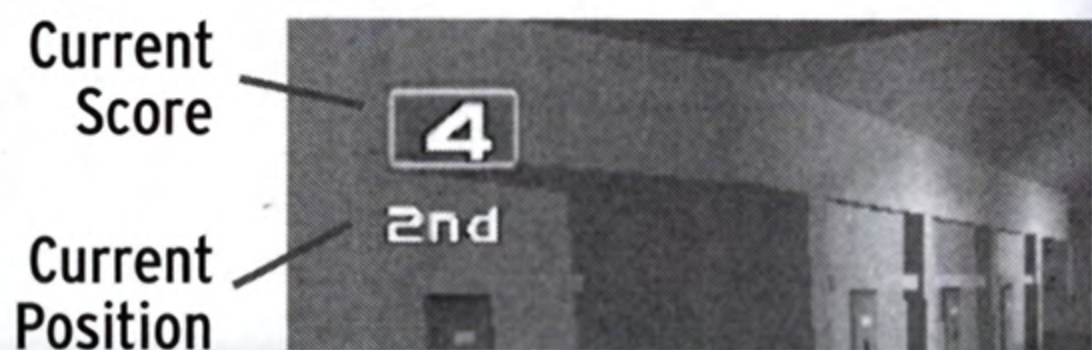
ARCADE CHALLENGE



TEAM DEATHMATCH



MULTIPLAYER



LAST MAN STANDING



CURRENT SCORE

Indicates your current score for the challenge

TIMER

Indicates the time remaining in minutes and seconds

MULTIPLIER

In certain Arcade challenges, from time to time, multipliers become available allowing you to increase your score dramatically

CURRENT POSITION

In Deathmatch and Flag Attack modes, this indicates your current position

OPPONENT'S SCORE

This only appears within the team deathmatch mode and shows the current score. Your team's score is always shown first

MOVEMENT CONTROLS

WALK

Push the left analog stick gently in the direction you wish to move

RUN

Push the left analog stick fully in the direction you wish to move

SPRINT

Hold down the L1 button while running

CROUCH

Tap the CIRCLE button to crouch and tap the CIRCLE button again to return to an upright position

LOOK AROUND & AIM

Push the right analog stick to look around

LEAN

Hold down the L2 button and push the left analog stick in the desired direction to lean out from behind walls, crates etc.

DOOR BREAKING

Bull can summon his strength to smash open certain locked doors. Press the L1 button repeatedly to charge up Bull's left arm and the R1 button repeatedly to charge up his right

ACTIVATING SWITCHES

Throughout the game, certain situations will require you to open doors etc. by pulling a switch. In this situation, you will be prompted to press the X button to carry out the desired action

CLIMBING LADDERS

When you approach a ladder you will be prompted to press the X button to climb or descend. You can hold the X button to slide down the ladder

SWAP CHARACTER

From time to time you will need to select the best character for the task in hand. To do this, press the SELECT button to swap to another character on the current mission. You can only swap characters when there is more than one character icon visible on the Heads Up Display

GANG CONTROLS

USING THE GANG

At points throughout the game you can enlist the help of various gangs to assist you. Your gang members appear on the radar as green dots.



RECRUITING GANG MEMBERS - Press and hold the L3 button to bring up the gang controls. Press the X button to recruit gang members. They will need to be within the immediate vicinity to be recruited

ADVANCE - Press the TRIANGLE button to instruct your gang to advance. If enemies are in the immediate vicinity your gang will attack them, otherwise they will advance a short distance and take up an attacking stance

FOLLOW - Press the CIRCLE button to instruct your gang to follow you

FALL BACK - Press the X button to instruct your gang to fall back. They will retreat to a position behind your character

DEFEND - Press the SQUARE button to instruct your gang to defend the area around you

WEAPON CONTROLS

STANDARD WEAPONS

Fire weapon - Press the R1 button

Secondary fire (Grenade launcher only) - Press the R2 button

Next weapon - Press ↑ on the directional buttons

Previous weapon - Press ↓ on the directional buttons

Cycle weapon - Press the TRIANGLE button

Reload weapon - Press the SQUARE button

MOUNTED GUNS

Use mounted gun - Press the X button

Aim mounted gun - Push the right analog stick

Fire mounted gun - Press the R1 button

(Continued)

SNIPER RIFLE

Toggle scope - Press the R2 button

Zoom in - Press the L1 button

Zoom out - Press the L2 button

Fire weapon - Press the R1 button

THROW & DETONATE

To throw and detonate items such as grenades, remote mines, and Molotov cocktails, select the appropriate weapon using ↑ & ↓ on the directional buttons, as outlined above. Once equipped, these weapons are thrown or fired as follows:

Grenades - Hold the R1 button and a timer will appear around the targeting reticule. The timer has 8 segments and once the last of the segments is emptied the grenade will explode. Release the R1 button to throw the grenade. NB if you throw the grenade early then enemies may have time to run away from it; if you wait too long you run the risk of the grenade exploding in your hand! The grenade will be thrown in the direction indicated by your targeting reticule

Proximity mine - Tap the R1 button and the mine will be thrown in the direction indicated by your targeting reticule. Proximity mines are activated by movement around them

Remote mine - Tap the R1 button and the mine will be thrown in the direction indicated by your targeting reticule. To detonate remote mines, press the R2 button (remember to retreat a safe distance first!)

Molotov cocktails - Tap the R1 button and the Molotov cocktail will be thrown in the direction indicated by your targeting reticule

Tear Gas - Tap the R1 button and the tear gas canister will be thrown in the direction indicated by your targeting reticule

VEHICLE CONTROLS

HELICOPTER

Control altitude & bearing - Push the right analog stick to move up & down

Control direction - Push the left analog stick to move left & right

Cycle targets - Press the L1 button to cycle through available targets

Fire machine gun - Press the R1 button

Fire rockets (if applicable) - Press the R2 button

TANK & MINITANK

Move forwards & backwards - Push the left analog stick

Steer & aim - Push the right analog stick

Fire shells - Press the R1 button

Change camera (tank only) - Press the R3 button

SPEEDBOAT

Accelerate - Press the X button

Brake/Reverse - Press the SQUARE button

Steer & aim - Push the left analog stick

Fire mortar - Press the R1 button. NB the longer you hold down the R1 button, the further the mortar strike will travel

Sharp Turn - Use the L1 button to perform a sharp turn

IN GAME ITEMS

There are various items in the game that can be collected or that can be destroyed to reveal collectible items. These include:

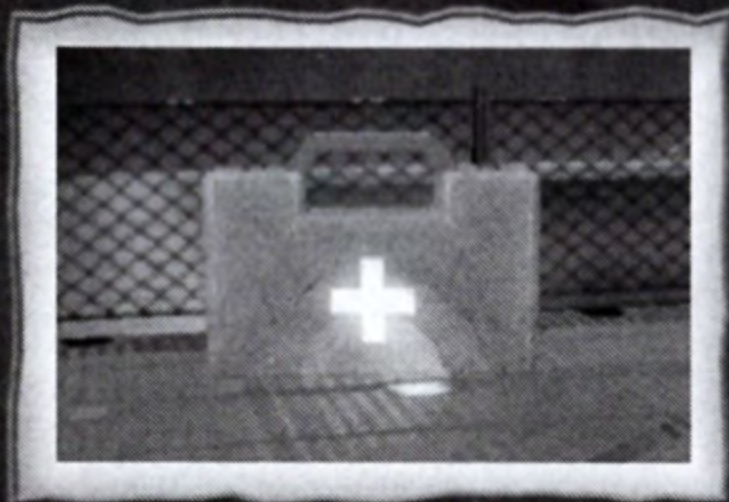
HEALTH PACKS

These are scattered around the level and are also dropped by some enemies. There are two types of health pack:



Large Med Packs

These replenish your health completely

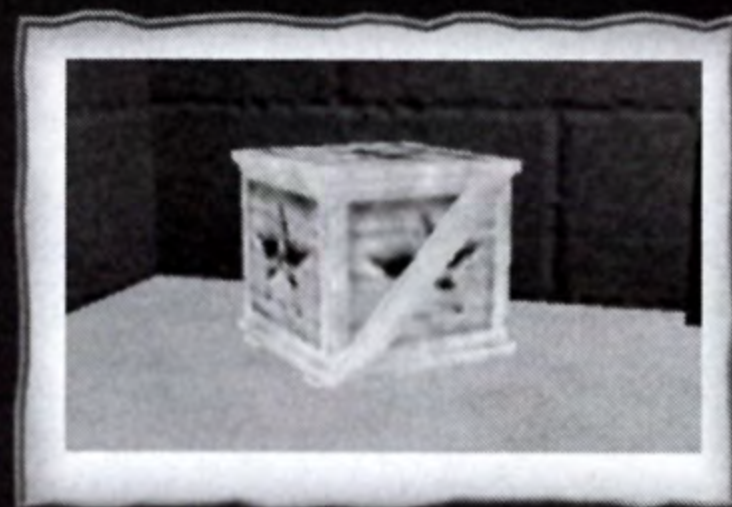


Small Med Packs

These increase your health by 25%

WOODEN CRATES

Some wooden crates contain weapons, ammo, and health packs that can be collected when the crate is destroyed.



WEAPONS

Enemies will drop their weapon when killed and this can be collected by the player simply by running over the weapon. The weapon's ammo will automatically be added to your current ammo.

AWARDS & UNLOCKABLES

Various parts of the game will be locked at the outset of the game. This includes the arcade challenge mode, cheats, and maps for use in competition mode. These items are unlocked as outlined below:

UNLOCKING GAMES

Only two arcade challenges are available at the outset. You can unlock additional challenges by winning awards - you score 1 point for a Bronze medal, 2 points for Silver and 3 points for obtaining Gold

Awards	Game Unlocked
0	Sniper Challenge
0	Helicopter Challenge
1	Super Sniper Challenge
3	Ghetto Kaos
6	Minitank Challenge
8	Mounted Gun Challenge
11	Workers' Zone Kaos
14	Rocket Challenge
17	Speedboat Challenge
20	Enforcer Challenge
23	Speedboat Race
27	Mounted Gun Challenge 2
30	Rocket Challenge 2
34	Helicopter Challenge 2
37	Enforcer Tank Kaos

UNLOCKING CHEATS

Unlock Criteria	Unlock Cheat
Time - Mission 01	Character Masks
Time - Mission 02	Tiny Character
Time - Mission 03	Huge Character
Time - Mission 04	No Radar
Time - Mission 05	Farmyard Noises
Time - Mission 06	One Shot Kills
Time - Mission 07	Rapid Fire Sniper
Time - Mission 08	Invincibility
Time - Mission 09	Infinite Ammo
Time - Mission 10	Exploding death
Time - Mission 11	Wireframe Mode
Time - Mission 12	8-Bit Computer Mode

UNLOCKING MULTIPLAYER MAPS

Unlock Criteria

Complete Mission 3
Complete Mission 6

Map

Ghetto Competition Map
Workers' Zone Competition Map

UNLOCKING CHARACTERS FOR MULTIPLAYER

Unlock Criteria

Complete Mission 4
Complete Mission 5
Complete Mission 6
Complete Mission 7
Destruction Cost - 01
Destruction Cost - 02
Destruction Cost - 03
Destruction Cost - 04
Destruction Cost - 05
Destruction Cost - 06
Destruction Cost - 07
Destruction Cost - 08
Destruction Cost - 09
Destruction Cost - 10
Destruction Cost - 11
Destruction Cost - 12

Unlocks Character

Spanky
MacNeil (Civilian)
Bull (Civilian)
Libra
Bob
Heavy Prison Guard
Enforcer
Trey
Duncan
Helmut
Lance
Piers
Betty
Soldier
Heavy Enforcer
Freak

UNLOCKING BATTLE MODE

Unlock Criteria

Complete all 12
mystery objectives

Unlocks

Battle Mode

CREDITS

DC STUDIOS

CEO

Mark Greenshields

DC STUDIOS UK

European Operations Director

Paul Middleton

European Development Manager

William Docherty

Lead Designer

Ralph Fulton

Design Team

Mike Barwise

Fraser Simpson

Neil Crawford

Senior Programmer

Dave Sowerby

Software Team

John Christie

Stuart McDonald

Jock Findlay

Ben Tayler

Senior Artist

Barry Sheridan

Art Team

Stuart Beel

Peter Clark

Tariq Rafiq

Senior Animator

Julian Laing

Animation Team

Stuart Dobbs

Paul Munro

Phil Vaughan

Vernon Victory

Audio Team

Justin Cowie

Sandy Lobban

QA Manager

Joe Neate

Lead Tester

Dan Jacobs

QA Team

Chris Thomson

Daniel Cleaton

Fraser Simpson

Gareth McGuire

Gurdeep Panesar

James Howe

Jason Leppard

Linda Jackson

Lindsay Robertson

Marc Carlton

Neil Crawford

Neil McPhillips

Ryan Slade

Technical Support

John McLaggan

DC STUDIOS MONTREAL

Creative Director

Oliver Sykes

Audio Director

Steve Szczepkowski

Music by

Philippe Charron

Steve Szczepkowski

Vice President Finance

Jonathan Price

Business Development Director

Steve Turnbull

**This game would not have
been possible without the
following people:**

Alex Bazlinton

Alex Ronald

Andrew Smith

Andy Strachan

Brian Gomez

Bruce Ballantine

Bryan Robertson

Chris Mullender

Chris Trewartha

Craig Hunter

Dave Hill

David Mayne

David Thompson

Ed Campbell

Georgina MacKenzie

Jim McLeish

Jonny Dobson

Klaas Schilstra

Kris Bird

Lee-anne Baxter

Martin Connor

Matt Cooling

Neil McMillan

Neil Sylvester

Nick Sawyer

Paul New

Peter Mackay

Richard Reavy

Robert Jeffrey

Scott Dunbar

Stephen Mackintosh

Steven McCallum

Stuart Carnall

Zain Ul Haider

SOUTHPEAK

Thanks to all at
SouthPeak Interactive
for their work on this
product.

Europe

Shane Dodson

North America

Katie Morgan

Melanie Mroz

Stephen M Harding

William R Phillips

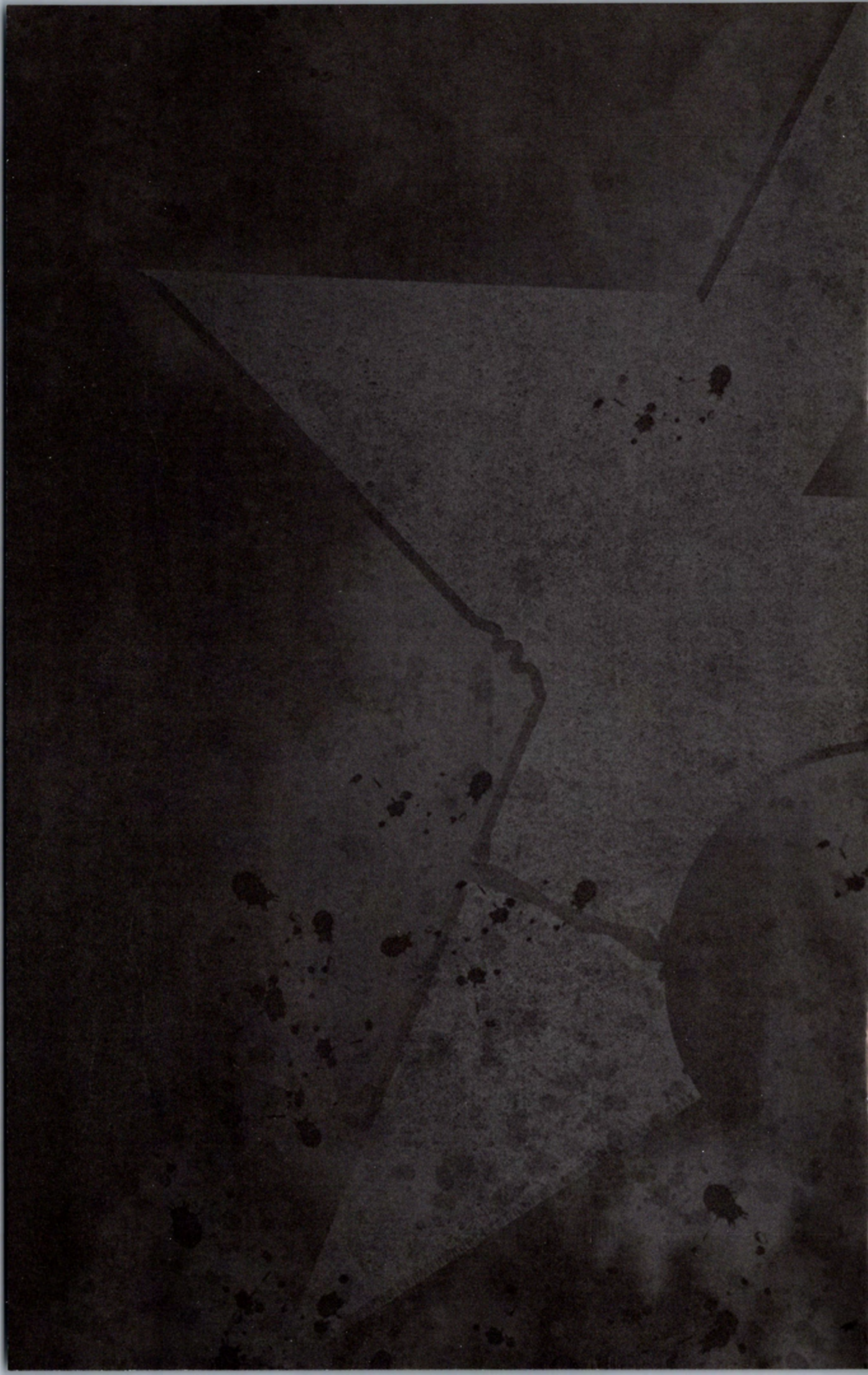
Zach Sharber

Layout

Jason Franzen

Special thanks to
Audiogodz

© 2006 SouthPeak Interactive L.L.C. All rights reserved. SouthPeak Interactive, the SouthPeak Interactive logo and all other SouthPeak Interactive product or service names are registered trademarks or trademarks of, or licensed to, SouthPeak Interactive LLC in the USA and other countries. DC Studios, State of Emergency 2, the DC Logo, the State of Emergency 2 logo, Spanky, Freak, Bull, Libra and MacNeil are registered designs and trademarks of Digital Concepts DC Studios Inc. State of Emergency 2 is © 2006 Digital Concepts DC Studios Inc. All rights reserved.



LIMITED WARRANTY

1. LIMITED WARRANTY. SouthPeak Interactive, LLC and its parent and affiliates (collectively referred to as "SouthPeak") and/or its distributor warrant(s) to the original consumer purchaser of this software product entitled "State of Emergency 2", which includes computer software and any associated media and/or printed materials (together called "Program"), that the recording medium on which the Program is recorded will be free from defects in material and workmanship for 90 days from the date of purchase. If the recording medium is found defective within 90 days of original purchase, you may return the Program and all accompanying materials along with your original receipt to the place you obtained it for a full refund or replacement, subject to such retailer's return policy. This warranty is limited to the recording medium containing the Program as originally provided by SouthPeak and is not applicable to normal wear and tear. This warranty shall not be applicable and shall be void if the defect has arisen through abuse, mistreatment, or neglect. Any implied warranties prescribed by statute are expressly limited to the 90-day period described above.

2. To the maximum extent allowed by law, SouthPeak, its licensors and subcontractors do not warrant any connection to, transmission over, or results or use of, any network connection or facilities provided (or failed to be provided) through the Program. You are responsible for assessing your own hardware needs and, if applicable, transmission network needs, and the results to be obtained therefrom. YOU EXPRESSLY AGREE THAT USE OF THE PROGRAM IS AT YOUR SOLE RISK. THE PROGRAM IS PROVIDED ON AN "AS IS," "AS AVAILABLE" BASIS, UNLESS SUCH WARRANTIES ARE LEGALLY INCAPABLE OF EXCLUSION. EXCEPT WITH RESPECT TO THE LIMITED CD-ROM WARRANTY AS SET FORTH IN SECTION 1 ABOVE, SOUTHPEAK AND ITS LICENSORS DISCLAIM ALL WARRANTIES AND CONDITIONS, WHETHER ORAL OR WRITTEN, EXPRESS OR IMPLIED, INCLUDING WITHOUT LIMITATION ANY IMPLIED WARRANTIES OR CONDITIONS OF MERCHANTABILITY, FITNESS FOR A PARTICULAR PURPOSE, NON-INFRINGEMENT OF THIRD PARTY RIGHTS, AND THOSE ARISING FROM A COURSE OF DEALING OR USAGE OF TRADE, REGARDING THE PROGRAM. SOUTHPEAK AND ITS LICENSORS ASSUME NO RESPONSIBILITY FOR ANY DAMAGES SUFFERED BY YOU, INCLUDING, BUT NOT LIMITED TO, LOSS OF DATA, ITEMS OR OTHER MATERIALS FROM DELAYS, NON-DELIVERIES, ERRORS, CAUSED BY SOUTHPEAK, ITS LICENSORS, LICENSEE AND/OR SUBCONTRACTORS, OR BY YOUR OWN ERRORS AND/OR OMISSIONS. SouthPeak and its licensors make no warranty with respect to any related software or hardware used or provided by SouthPeak in connection with the Program except as expressly set forth above.

3. LIMITATION OF LIABILITY. YOU ACKNOWLEDGE AND AGREE THAT SOUTHPEAK AND ITS LICENSORS SHALL NOT ASSUME OR HAVE ANY LIABILITY FOR ANY ACTION BY SOUTHPEAK OR ITS CONTENT PROVIDERS, OTHER PARTICIPANTS OR OTHER LICENSORS WITH RESPECT TO CONDUCT, COMMUNICATION OR CONTENT OF THE PROGRAM. SOUTHPEAK AND ITS LICENSORS SHALL NOT BE LIABLE FOR ANY INDIRECT, INCIDENTAL, SPECIAL, PUNITIVE, EXEMPLARY, OR CONSEQUENTIAL DAMAGES RESULTING FROM POSSESSION, USE, OR MALFUNCTION OF THE PROGRAM, INCLUDING DAMAGES TO PROPERTY, LOSS OF GOODWILL, COMPUTER FAILURE OR MALFUNCTION AND, TO THE EXTENT PERMITTED BY LAW, DAMAGES FOR PERSONAL INJURIES, EVEN IF ADVISED OF THE POSSIBILITY OF SUCH DAMAGES. EXCEPT AS EXPRESSLY PROVIDED HEREIN, SOUTHPEAK'S AND ITS LICENSORS' ENTIRE LIABILITY TO YOU AND YOUR EXCLUSIVE REMEDY FOR ANY BREACH OF THIS WARRANTY IS LIMITED SOLELY TO THE TOTAL AMOUNT PAID BY YOU FOR THE PROGRAM, IF ANY. BECAUSE SOME STATES DO NOT ALLOW THE EXCLUSION OR LIMITATION OF LIABILITY FOR CERTAIN DAMAGES, IN SUCH STATES SOUTHPEAK'S AND ITS LICENSORS' LIABILITY IS LIMITED TO THE EXTENT PERMITTED BY LAW.

4. GENERAL PROVISIONS. This warranty shall be governed by the laws of the Commonwealth of Virginia and the United States without regard to its conflicts of laws rules and you consent to the exclusive jurisdiction of the state and federal courts in Henrico County, Virginia. The United Nations Convention on Contracts for the International Sale of Goods shall not apply to this Program. This warranty represents the complete warranty concerning the Program between SouthPeak and you.

STATE OF EMERGENCY 2



www.dc-studios.com



www.southpeakgames.com

© 2006 SouthPeak Interactive L.L.C. All rights reserved. SouthPeak Interactive, the SouthPeak Interactive logo and all other SouthPeak Interactive product or service names are registered trademarks or trademarks of, or licensed to, SouthPeak Interactive LLC in the USA and other countries. DC Studios, State of Emergency 2, the DC Logo, the State of Emergency 2 logo, Spanky, Freak, Bull, Libra and MacNeil are registered designs and trademarks of Digital Concepts DC Studios Inc. State of Emergency 2 is © 2006 Digital Concepts DC Studios Inc. All rights reserved.