

# SPLASHDOWN<sup>®</sup>

Rides Gone Wild<sup>™</sup>



EVERYONE<sup>®</sup>  
**E**  
CONTENT RATED BY  
ESRB

Instruction Manual

**THQ**<sup>®</sup>

## **WARNING: READ BEFORE USING YOUR PLAYSTATION®2 COMPUTER ENTERTAINMENT SYSTEM.**

A very small percentage of individuals may experience epileptic seizures when exposed to certain light patterns or flashing lights. Exposure to certain patterns or backgrounds on a television screen or while playing video games, including games played on the PlayStation®2 console, may induce an epileptic seizure in these individuals. Certain conditions may induce previously undetected epileptic symptoms even in persons who have no history of prior seizures or epilepsy. If you, or anyone in your family, has an epileptic condition, consult your physician prior to playing. If you experience any of the following symptoms while playing a video game—dizziness, altered vision, eye or muscle twitches, loss of awareness, disorientation, any involuntary movement, or convulsions—**IMMEDIATELY** discontinue use and consult your physician before resuming play.

### **WARNING TO OWNERS OF PROJECTION TELEVISIONS:**

Do not connect your PlayStation®2 console to a projection TV without first consulting the user manual for your projection TV, unless it is of the LCD type. Otherwise, it may permanently damage your TV screen.

### **USE OF UNAUTHORIZED PRODUCT:**

The use of software or peripherals not authorized by Sony Computer Entertainment America may damage your console and/or invalidate your warranty. Only official or licensed peripherals should be used in the controller ports or MEMORY CARD slots.

### **HANDLING YOUR PLAYSTATION 2 FORMAT DISC:**

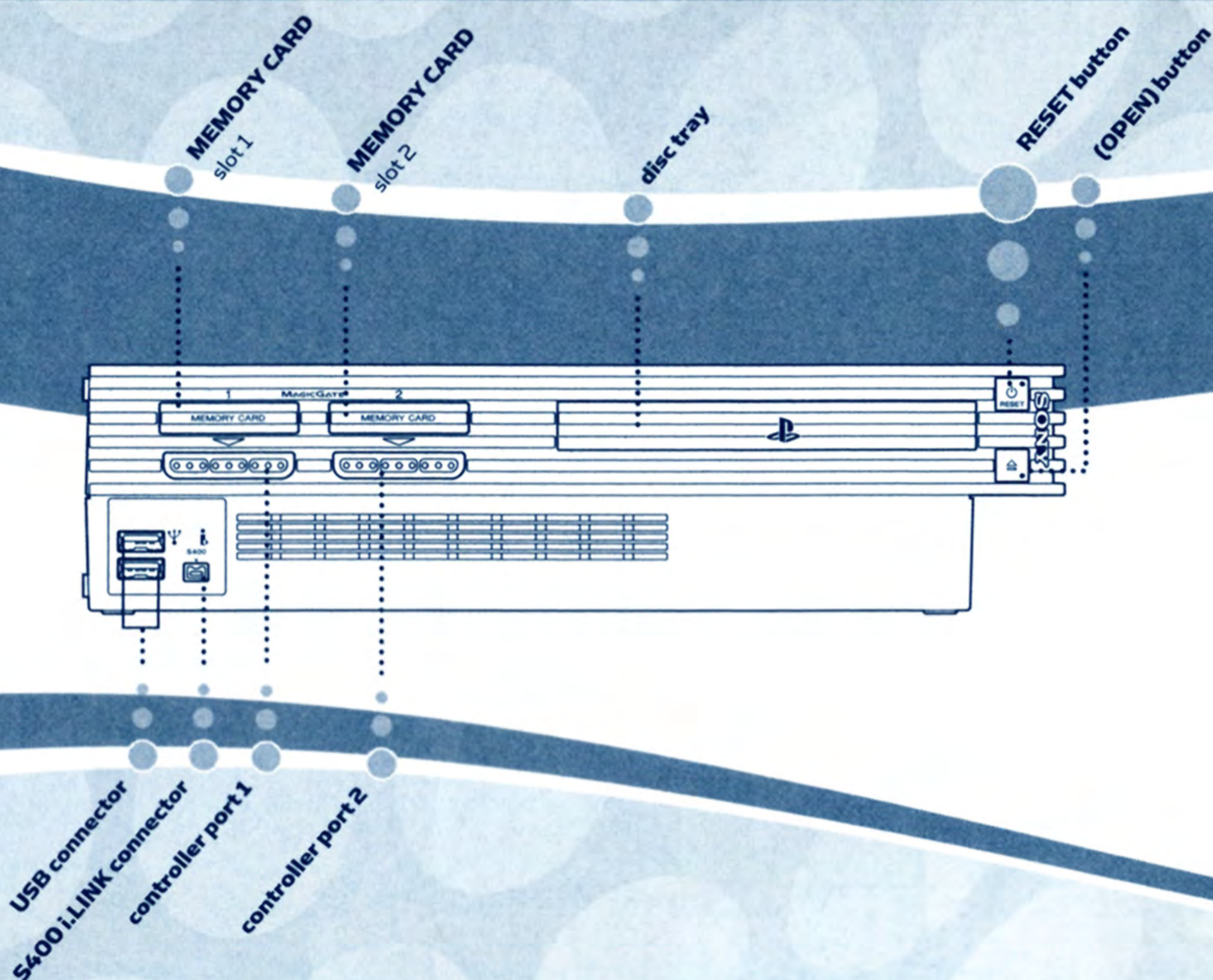
- This disc is intended for use only with PlayStation®2 consoles with the NTSC U/C designation.
- Do not bend it, crush it or submerge it in liquids.
- Do not leave it in direct sunlight or near a radiator or other source of heat.
- Be sure to take an occasional rest break during extended play.

Keep this compact disc clean. Always hold the disc by the edges and keep it in its protective case when not in use. Clean the disc with a lint-free, soft, dry cloth, wiping in straight lines from center to outer edge. Never use solvents or abrasive cleaners.

# TABLE OF CONTENTS

<b>Getting Started</b> .....	<b>2</b>
<b>Get Ready, Get Wet, Go</b> .....	<b>2</b>
<b>Controls</b> .....	<b>3</b>
<b>Main Menu</b> .....	<b>4</b>
<b>Racing</b> .....	<b>4</b>
Game Screen .....	4
Control Modes .....	5
Slalom Buoys .....	5
Ramps .....	5
Off-Course .....	5
Pause Menu .....	5
<b>Stunts</b> .....	<b>6</b>
<b>The Performance Meter</b> .....	<b>7</b>
<b>Training Mode</b> .....	<b>8</b>
<b>Career Mode</b> .....	<b>9</b>
<b>Arcade Mode</b> .....	<b>10</b>
<b>Vs. Mode</b> .....	<b>12</b>
<b>Warehouse</b> .....	<b>12</b>
<b>Options</b> .....	<b>13</b>
<b>Credits</b> .....	<b>14</b>
<b>Limited Warranty</b> .....	<b>17</b>

# GETTING STARTED



Set up your PlayStation<sup>®</sup>2 computer entertainment system according to the instructions in its instruction manual. Make sure the MAIN POWER switch (located in the back of the console) is turned on. Press the RESET button. When the power indicator lights up, press the open button and the disc tray will open. Place the **Splashdown<sup>®</sup> Rides Gone Wild<sup>™</sup>** disc on the disc tray with the label side facing up. Press the open button again and the disc tray will close. Attach game controllers and other peripherals, as appropriate. Follow on-screen instructions and refer to this manual for information on using the software.

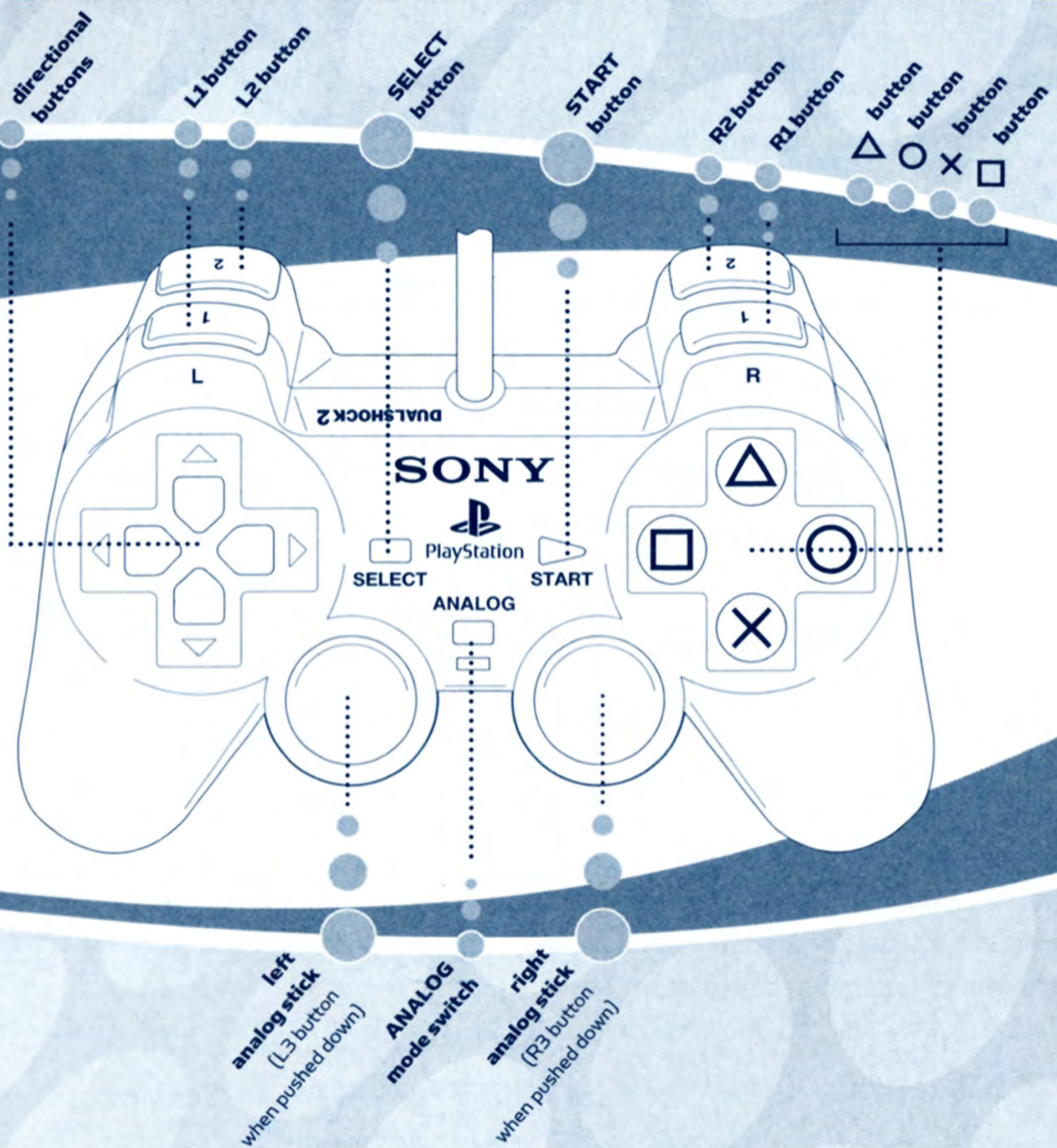
## GET READY, GET WET, GO!



**Splashdown<sup>®</sup> Rides Gone Wild<sup>™</sup>** combines watercraft racing, theme park spectacle, and wild arcade fun for the ultimate adrenaline rush! Blaze through incredible, dynamic environments, kicking off a huge variety of acrobatic tricks – it's so much fun, you'll wet yourself!

# CONTROLS

## DUALSHOCK®2 ANALOG CONTROLLER CONFIGURATION



### MENU CONTROLS

- Highlight Option ● Directional buttons
- Confirm Decision ● X button
- Return to Previous Menu ● Δ button

### GAME CONTROLS

- Steer/Lean ● Directional buttons or left analog stick
- Throttle ● X button
- Look Back ● □ button
- Begin Stunt ● L1 button, R1 button, or R2 button (hold)

- Begin Vehicle Stunt ● L2 button (hold)
- Camera Presets ● Δ button
- Reset to Track ● SELECT button
- Pause ● START button
- View Training Text (training mode only) ● X button
- Skip To Next Message (training mode only) ● X button

**Note:**  
The controls listed above are the default controls for *Splashdown® Rides Gone Wild™* and can be customized by choosing Controller 1 / Controller 2 from the Options Menu.

# MAIN MENU

There are six options on the Main Menu:

- **Training:** Hone your racing and stunt skills in these tutorials.
- **Career:** Progress through a racing season in the World or Stadium Championships.
- **Arcade:** Single player competition in one of five events.
- **Vs.:** 2-player competition in one of four events.
- **Options:** Adjust game and sound settings.
- **Warehouse:** Trade in points for unlockable items such as wetsuits, characters and more.

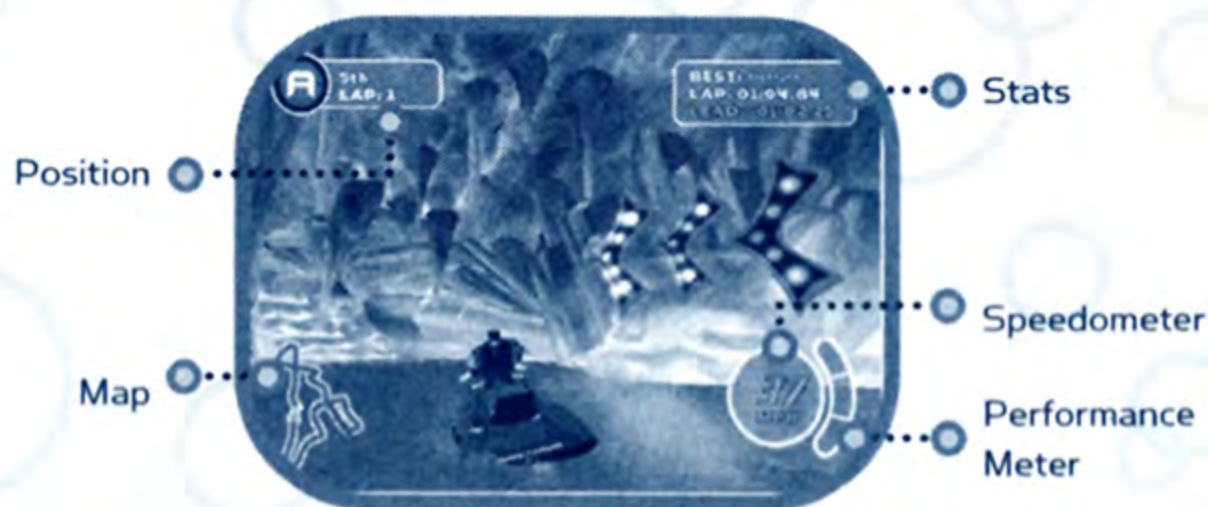
## RACING



The rules for most races in *Splashdown® Rides Gone Wild™* are simple. There are generally three laps and five racers per race (four AI racers and a human player in Arcade or Career modes; or three AI racers and two human players in Vs. mode). The objective is to race as quickly and safely as possible in order to cross the finish line before any other racer.

Note:  
The best way to prepare yourself for racing through Career mode is to read through this instruction manual and then play through the entire Training mode!

### GAME SCREEN



- **Position:** This indicates your current position and the current lap.
- **Stats:** Displays your best lap time, current lap time, and the leader's lap time.
- **Map:** An outline of the course that displays your position (green dot), your opponents' positions (red dots), and the finish line (blue arrow).
- **Speedometer:** Shows your current speed in MpH or KM/H.
- **Performance Meter:** Increase this meter by successfully performing stunts; the higher the meter, the higher your acceleration and top speed.
- **Analog Throttle (not shown):** When this option is turned on, a meter depicting the current throttle level will appear to the left of the speedometer.

## CONTROL MODES

You can choose between two different control modes whenever you race in *Splashdown® Rides Gone Wild™*:

- **Arcade:** Your watercraft automatically hydroplanes and handles better around corners. This control mode is more forgiving and is recommended for novice racers.
- **Simulation:** You must manually control your watercraft's hydroplaning and use advanced turning techniques. This mode is for the true Splashdown experts!



### SLALOM BUOYS

These flag slalom buoys define the shape of the course. You must pass each buoy on the side indicated by the arrow. Failing to properly pass a slalom buoy decreases your Performance Meter and slows you down, but if your Performance Meter is maxed out, it can be a good strategy to skip a buoy or two if it means you can cut a few seconds off of your time – just don't do it too often!




### RAMPS

Ramps are stunt opportunities for the watercraft. Missing a ramp means missing an opportunity to perform a death-defying vehicle stunt and boost your Performance Meter. There are no other penalties for failing to leap off them.



### OFF-COURSE

If you fly off of the course, you've got a few seconds to get yourself back on track. If you don't return to the course before the timer expires, you are automatically reset on the course and slapped with a brief time penalty. You can also press the  button to automatically return to the course.

## PAUSE MENU

Pressing the  button during a race pauses the game and brings up the Pause Menu, which contains the following options:

- **Continue:** Resume the race.
- **Restart Event:** Start the race over from the beginning.
- **Stats:** Show or hide your lap statistics.
- **Speedometer:** Show or hide the speedometer.
- **Performance Meter:** Show or hide the performance meter.
- **Map:** Show or hide the course map.
- **Camera Roll:** Toggle the Camera Roll ON or OFF.
- **Sound Options:** Choose the Music Track you want to listen to and set the volume levels for the Game Music, Overall Sound Effects (SFX), Engine, Environment, and Dialogue.
- **Quit Event:** Exit the race and return to the Main Menu.

# STUNTS



To keep your Performance Meter high and your speed and acceleration competitive, you need to perform as many stunts as possible. There are 360 separate stunt combos in *Splashdown® Rides Gone Wild™*, so you shouldn't run out of them any time soon!

## RIDER STUNTS



To perform a stunt, hold down either the **L1**, **R1**, or **R2** buttons and use the directional buttons or left analog stick to perform a basic Tier 1 stunt. The name of the Tier 1 stunt appears at the bottom of the screen when you successfully perform it.

To boost your Performance Meter above the first segment, you need to perform Tier 2 and 3 stunts. To perform these advanced stunts, link to them from a Tier 1 stunt. After performing a Tier 1 stunt, continue to hold down the stunt button (**L1**, **R1**, or **R2** button) and use the directional buttons or left analog stick to perform the next stunt in the chain. Each Tier 1 stunt leads into three different Tier 2 stunts, and each Tier 2 stunt leads into two different Tier 3 stunts.

If you try to enter a stunt command that doesn't lead to a real stunt, nothing happens and you earn no points. Also, if you release the stunt button, your stunt combo ends, and the next stunt you perform will be a Tier 1 stunt. Non-linked stunts are not worth as much as linked combos of stunts.

## VEHICLE STUNTS



Unlike rider stunts, vehicle stunts can only be performed when you're flying off ramps. Vehicle stunts carry low, Tier 1 point values. They don't just apply to the first block of the Performance Meter, though—they add boost to the block you currently have filled.

You can also combine vehicle stunts with rider stunts to create spectacular combos and add much more boost to the Performance Meter as well! There are three different vehicle stunts that you can perform:

- **Barrel Roll:** Hold the **L2** button and then press right, left OR left, right on the directional buttons or left analog stick
- **Invert:** Hold the **L2** button and then press up, down OR down, up on the directional buttons or left analog stick

- **Flat Spin:** Hold the **L2** button and then press up, right OR up, left on the directional buttons or left analog stick

Note:

The best way to master stunts is to use the Stunt Library option in Training mode.

Note:

You can enter the commands for a combo of stunts without pausing between the stunts, even if you haven't finished the first stunt yet. The game remembers your commands and executes them in order.

Note:

Be sure to enter the directional button or left analog stick commands while you are still in contact with the ramp.



## REPEATING STUNTS

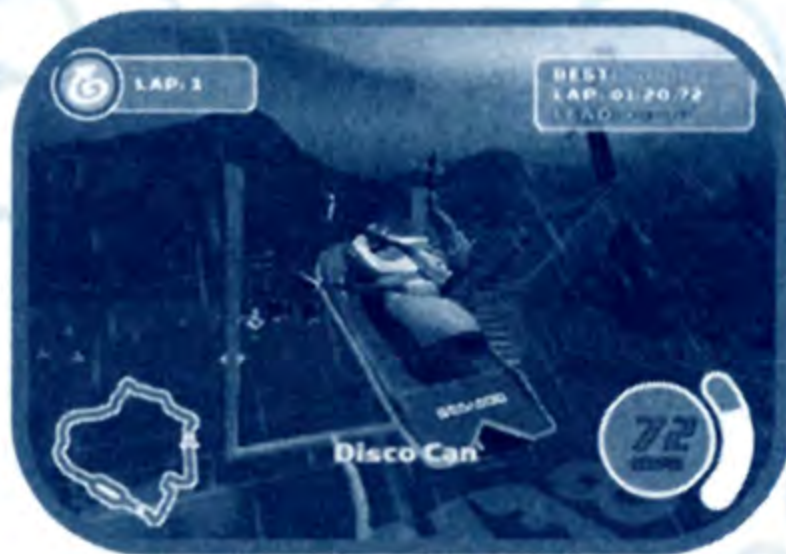
If you repeat a stunt or stunt chain in the same race or event, it will not be worth as much as its original values, and will add less points to the Performance Meter. To keep your Performance Meter high, master a wide variety of stunts and don't keep using the same ones over and over.

## HOLD METER



After performing a stunt, continue to hold down the stunt button (**L1**, **R1**, or **R2** button), but do not enter any directional inputs. This activates the Hold Meter, which appears on screen as a rotating dial in place of the speedometer. Each revolution of the Hold Meter adds a little bit more to the Performance Meter. You can also use the Hold Meter in the Freestyle mode, which multiplies the value of your stunt for a bigger score!

# THE PERFORMANCE METER



Mastering the Performance Meter is the key to victory in *Splashdown® Rides Gone Wild™*. Fill up the Performance Meter by performing stunts—the higher the Performance Meter, the better your top speed and acceleration. Be careful, though—your handling and stability don't improve as the Performance Meter rises. It's tricky to stay on course when your watercraft's engine kicks in like a 747!

The Performance Meter is divided into three segments, each of which represents a tier of stunts. Fill the first block of the Performance Meter by performing Tier 1 stunts, the second block by performing Tier 2 stunts, and the third block by performing Tier 3 stunts. In order to completely fill the Performance Meter and maximize your watercraft's speed and acceleration, you're going to have to master some of the more difficult stunts in the game!

## DIFFICULTY LEVELS

The difficulty level that you race at determines the speed and skill of your AI opponents. It also indicates the average level you'll need to keep your Performance Meter at if you want to outrun them.

- **Rookie:** Must keep first block of the Performance Meter filled.
- **Pro:** Must keep first and second blocks of the Performance Meter filled.
- **All-Star:** Must keep all three blocks of the Performance Meter filled.

# TRAINING MODE



Choose Training from the Main Menu to learn every trick and technique you need to win every race. During Training mode, an AI character (Andy Pierce) demonstrates a variety of techniques on special training courses, and then you have to repeat them.

If you fail to complete a training objective, you can retry it as many times as you want. When you complete the Basic and Advanced lessons, you will earn points that can be used in the Warehouse to unlock hidden items! You only earn points for completing training once, though.

## **Basic**

Basic Training teaches you fundamental watercraft control techniques, such as driving, turning, slaloming buoys, performing stunts, and landing from jumps. Novice players should definitely complete Basic Training before going on to play other game modes.

## **STUNT LIBRARY**

The Stunt Library lets you practice every stunt in the game. There are two Stunt Library modes:

- **Training Stadium:** Practice performing stunts by jumping off of ramps in a stadium set-up.
- **Stunt Practice:** All you have to do is hit the proper sequence of buttons to execute the stunt. You don't need to worry about controlling the rider or hitting the ramp correctly.

Press right or left on the left analog stick or the directional buttons to choose a Tier of stunts (1, 2, or 3), and then press up or down to select the specific stunt you'd like to practice. The commands for the selected stunt appear on the screen. Press the **X** button to practice it in the Training Stadium or the **□** button to try it in the Stunt Practice mode.

## **Advanced**

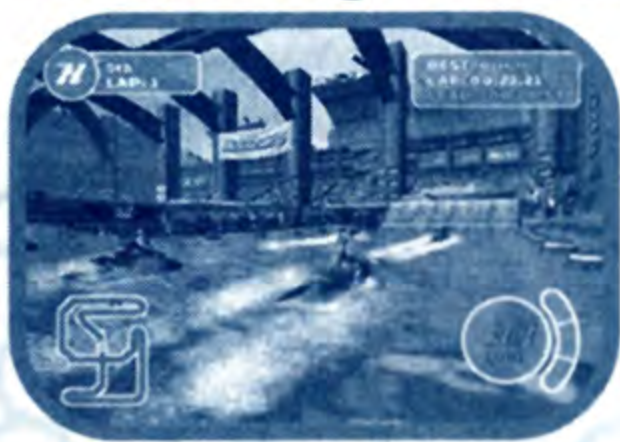
Advanced Training takes you through the expert techniques you'll need to master if you really want to take it to the competition. Advanced Training shows you how to perform Tier 2 and Tier 3 stunts, vehicle-based stunts, hydroplaning, and advanced turning techniques.

# CAREER MODE

Career mode is the ultimate test of your watercraft racing skills, in which you need to compete in several series of races. There are two different Career modes to choose from:

- **World Championship:** Familiar to Splashdown veterans, this Career mode takes you through the game's 8 outdoor courses in two series (or 4 races in one series if you're playing in Rookie mode).
- **Stadium Championship:** An all-new, all-indoor Career mode, the Stadium Championship challenges you to complete 12 races in three series (or 7 races in two series if you're playing on Rookie mode).

## STARTING A NEW CAREER



After choosing to play through a World or Stadium Career, choose the character that you're going to use for the duration of your Career. You can also choose your SEA-DOO'S paintjob, set the difficulty level of the Career, and pick the Control mode you wish to use (Arcade or Simulation).

You are assigned the fifth pole position for the first race in Career mode. After that, your pole position is determined by how well you placed in the previous race. To progress to the next race, you must average second place through the series.

If you don't place well enough to continue on to the next race or series, you can retry the race if you have any continues remaining. The number of continues you get depends upon the difficulty level you're playing:

- **Rookie:** 3 continues (World); 5 continues (Stadium)
- **Pro:** 4 continues (World); 6 continues (Stadium)
- **All-Star:** 2 continues (World); 2 continues (Stadium)

If you don't place high enough to progress and are out of continues, your Career is over. As you progress through Career mode, you will unlock new tracks and gain points that you can use to unlock even more items in the Warehouse!

## CONTINUING A FROZEN (SAVED) CAREER



If you have a frozen (saved) Career (see "Saving and Continuing" in the next section), you can resume it from the Career Menu.

**BEWARE:** The moment you resume a frozen Career, that game save is erased from your memory card (8MB)(for PlayStation®2)!

If you don't place well enough to continue on to the next race, you can't simply reload your saved game; you have to use a continue to try again, or restart the Career if you are out of continues.

## **FREEZING (SAVING) AND CONTINUING**

After each race that you successfully complete, you have the option of continuing or saving and quitting:

- **Continue:** Keep racing through the series, assuming you're qualified to do so.
- **Freeze:** Save your progress to a memory card (8MB)(for PlayStation®2) and exit to the Main Menu.

Note:  
Remember, as soon as you resume a frozen Career, your save file is erased from your memory card, so don't count on being able to replay the race over and over!

## **ARCADE MODE**

Arcade Mode allows you to splash through a variety of single race types. It's an excellent way to get your feet wet before attempting Career mode.

### **COURSE SETTINGS**

Before starting any of the Arcade Mode race types, you will be able to change the course settings.

- **Course Type:** Choose from World or Stadium courses.
- **Course:** Select the course you want to race on from all unlocked courses.
- **Mode (Freestyle):** Choose Timed to race against the clock or Practice to get a feel for the course without a time limit.
- **Difficulty:** Set the difficulty level for the race (Rookie, Pro, or All-Star).
- **Vs. (Time Trials):** Choose Best if you want to race against the saved best lap time or New if you want to create and race against a new lap record.
- **Laps:** Determine the length of the race, in laps, for Stadium course races only (from 1 to 5 laps); World course races are 3 laps long.
- **Opponents (Practice/Technical Time Trials):** Choose None for no opponents, AI for four AI opponents, or Ghost for an intangible ghost opponent who represents the current best lap time. In Practice Mode, choose NONE for no opponents or AI for four AI opponents.
- **Wave Height (Technical Time Trials):** Determine how choppy you want the water to be, from Calm all the way up to Large Swells. Higher waves mean more challenging races and bigger rewards if you set the lap record!

### **Circuit**

Circuit mode is a single fast and furious race against four AI opponents, and the rules are simple – you either come in first or lose! After choosing your racer and watercraft, select Circuit from the list of Event Types in Arcade mode.

## **FREESTYLE**

Freestyle mode is a test of your stunt skills. To win a Freestyle event, earn the highest score by racking up stunt points within the time limit. At the beginning of the game, only two Freestyle courses are available. To unlock more courses, you must beat a record on a previous Freestyle course in Arcade or Vs. mode, or you can purchase the courses in the Warehouse with points you've earned.

During a Freestyle event, you can also grab floating pick-ups that help you maximize your stunt score:

- **Instant Meter Boost:**

Completely fills your Performance Meter.



- **Hold Meter Multipliers:**

Speeds up the Hold Meter by 2x or 3x for a limited amount of time.



- **Stunt Score Multipliers:**

Multiplies a stunt combo by 2x, 3x or 5x its normal value



- **Time Extenders:**

Adds 15, 30, or 60 seconds to the timer.



- **Reset All Stunts:**

Resets all repeated stunts, so you can pull them off again without a penalty.



## **TIME TRIALS**

Time Trial events put you against the clock, with an intangible “ghost” racer as your only competition. The ghost zips around the course to represent the current best lap time—stay ahead of it to continue to set new lap records.

### **TECHNICAL TIME TRIALS**

A Technical Time Trial race is a never-ending series of laps around slalom buoys on 20 unique Technical Time Trials courses. You won't need stunts and you won't need ramps – but you'll need to learn the lines if you want to set the lap record!

At the beginning of the game, only two Technical Time Trials courses are available. To unlock more courses, you must beat a record on a previous Technical Time Trials course in Arcade or Vs. mode, or you can purchase them in the Warehouse.

## **PRACTICE**

Practice is exactly what it sounds like—a chance to hone your watercraft skills without having to worry about off-track penalties and resets. It's also a good way to master courses that you've just unlocked, or search for the many shortcuts hidden throughout the World courses!

# VS. MODE

Vs. mode is the two-player version of Arcade mode. Connect two DUALSHOCK®2 analog controllers to your PlayStation®2 computer entertainment system, then you and a friend can compete against each other in the following four Vs. mode race types:

## **CIRCUIT**

Vs. Circuit mode is identical to Arcade Circuit mode, except for the fact that there are two human players. All of the Vs. Circuit mode options are identical to the Arcade Circuit mode options.

Note:  
you cannot play  
in the Outdoor  
environments  
in Vs. mode.

## **FREESTYLE**

Vs. Freestyle mode is a two-player version of Arcade Freestyle mode, where two high-flying human players compete against each other to pull off bigger and badder stunts. All of the Vs. Freestyle mode options are identical to the Arcade Freestyle mode options.

## **TECHNICAL TIME TRIALS**

Vs. Technical Time Trials mode is similar to Arcade Technical Time Trials mode, with a twist: the two human players race against each other to hold the lap record for the duration of the Record Timer. Once a player sets a lap record, the Lead begins counting up towards its set limit.

To stop the Lead, the other player must beat the current leader's best time to gain control of the Lead. The player who holds the Lead for the set amount of time wins the event.

- **Record Timer:** Set the length of the Record Timer to 2:00, 3:00 or 5:00.

## **PRACTICE**

Vs. Practice mode is identical to Arcade Practice mode, except for the fact that it features two human players. All of the Vs. Practice mode options are identical to the Arcade Practice mode options.

# WAREHOUSE



Achieving just about any goal in *Splashdown® Rides Gone Wild™* earns you points, which can be used to unlock items in the Warehouse. Warehouse unlockables include wetsuits, watercraft paintjobs, characters, courses, and more! Every available unlockable item in the game is displayed in the store. Big-ticket unlockables (like characters and courses) cost more points to unlock than smaller unlockables (like wetsuits and watercraft paintjobs).

The number of Warehouse points you get for completing a goal depends upon the difficulty of the goal. Major goals include finishing a Career (World or Stadium). Minor goals include setting a best lap in the Time Trials event or achieving a high score in the Freestyle event. Even achieving simple goals, like setting a record in Time Trials or placing first in a Circuit race, will give you a few points. Your difficulty level also affects the point value; higher difficulty levels award more points.

Everything that you unlock by playing through Career mode can be purchased in the Warehouse if you have enough points, so you can save points by unlocking the items in Career mode, or you can save yourself the frustration of completing difficult goals by simply buying the items that the goals unlock. A "% Complete" figure appears on the Warehouse Menu and the Main Menu, reminding you of what you have left to unlock.

## OPTIONS

### **LOAD**

Use this option to load saved *Splashdown® Rides Gone Wild™* data from a memory card (8MB)(for PlayStation®2).

### **SAVE**

The game autosaves when you exit from an event if you've set a record or acquired points. If you want to save your progress at any other time, use this option to save all of your game data.

### **CONTROLLER 1/CONTROLLER 2**

If you don't want to use the default control scheme, you can customize the controls for each DUALSHOCK®2 analog controller here.

### **GAME OPTIONS**

The Game Options menu lets you tweak the following display options for the game:

- **Speedometer:** Display your speed in miles per hour (MPH) or kilometers per hour (KM/H).
- **Camera Roll:** Set this to ON to enable Camera Roll during turns, or select OFF.
- **Split Screen:** Split the screen horizontally or vertically during Vs. mode races.
- **Aspect Ratio:** Set this to Standard for televisions with 4:3 aspect ratio or Widescreen for televisions with 16:9 aspect ratio.
- **Video Mode:** If your TV supports progressive scan mode, set this to High Def (480p) for an enhanced viewing experience; if not, leave it at Standard (480i).
- **Center Screen:** If the image on the screen seems to be off-center, select this option and use the directional buttons to center the screen image.

# CREDITS

## **RAINBOW Studios**

### **Game Design**

Jordan Itkowitz  
Adam Kraver

### **Programming Lead**

Adam Kraver

### **Art Lead**

Bruce Hall  
Brad Ruminer

### **Producer**

Mark Mahler

### **Technology Lead**

Mark DeSimone

### **Game Programming Team**

Jeff Ehrman  
Mike Morace  
Jason Bucher  
Michael Bruce  
Eric Dickinson

### **Technology Programming Team**

Doug McNabb  
Mike Chow  
Houman Meshkin  
Travis Hilterbrand  
Rick Baltman  
Ron Radeztsky Jr.

### **Tools Programming**

Dennis Booth  
Matt Keele  
Michael Klucher

### **Additional Programming**

Jose Martinez  
James Comstock  
Eric Patrick  
Lorna Sprenger  
Elliott Olson  
Bill Nolan

### **3D Modeling & Textures**

Eric Clark  
Josh Watson  
Kevin Riley  
Jose Fontanez  
Aaron Davies  
Danny Keys  
Stanley Fuka  
Andy Sinur  
Roman Stepanov

### **Animation**

Wil Paras  
Curtis Orr  
Chris Baranowski

### **Additional Art**

Brian Westergaard  
Vincente Baez  
Leslie Keys

### **UI Design**

Brent Ashe  
Thomas di Cosola  
Brian Coonce

### **Concept Art**

Brian Grabinski  
Andre Kirk  
Carlos Sanchez

### **Audio and Sound Design**

Dan Gallagher  
Tim Benson

### **Music Composition**

Dave Lowmiller

### **QA Manager**

Travis Riffle

### **Quality Assurance**

Elliott Olson  
Andy Wittekind  
August Goebel  
Chris Gabrish  
Jess Heinl

### **Intro Video**

Boyd Lake  
Brad Doan  
Tom Granberg

### **VP - Product Development**

Scott Novis

### **Associate Producer**

Jared Bals

### **Administration**

Jessica Hanson  
Christine Bryan  
Marji Lent  
Cecelia Merrill

### **System Support**

Dave Favier  
Brad Carpenter

### **Script and Voice Direction**

Jordan Itkowitz

### **Voice Talent**

Jessica Page : Haily Hollister  
Gina Tleel : Coral Suarez  
Dave Lowmiller : Andy Pierce  
Jose Fontanez : Amman Ra  
Travis Thurman : Jonah Barrett  
Hugh Shaw : ShaBlamm!!,  
"Wrong Way"  
McNabb  
Eri Ikoma : Kyoko Takahashi  
Aaron Davies : Sneaky Pete  
Bruce Hall : ZugZug  
Jason Bucher : Rotney  
Mark DeSimone : Agent  
Michael Hawke

### **Special Thanks**

Bombardier Recreational Products  
Genevieve Bastien  
The translation team  
Dr. Christina Novak  
Rob Baumsteiger  
Hiro Takahashi  
Ken George  
Brian Coonce  
Doug Perry  
Our very patient families  
and friends

## **THQ INC.**

### **Executive Vice President - Worldwide Studios**

Jack Sorensen

### **Vice President - Product Development**

Philip Holt

### **Director - Project Management**

Richard Browne

### **Project Coordinator**

Jason Garwood

### **Director - Creative Management**

Jim Boone

### **Associate Creative Manager**

Mike Motoda

### **Senior Vice President - Worldwide Marketing**

Peter Dille

### **Group Marketing Manager**

Craig Rechenmacher

### **Product Manager**

Laura Naviaux

### **Marketing Coordinator**

David Newman

### **Director - Creative Services**

Howard Liebeskind

### **Senior Creative Services Manager**

Kathy Helgason

### **Creative Services Manager**

Kirk Somdal

### **Director - Public Relations**

Liz Pieri

### **Public Relations Manager**

Reilly Brennan

### **Associate Public Relations Manager**

Kendall Boyd



**Public Relations Coordinator**

Kyle Walker

**Director - Quality Assurance**

Jeremy Barnes

**QA Manager**

Monica Vallejo

**QA Database Administrator**

Jason Roberts

**QA Technicians**

Mario Waibel

Brian McElroy

**Lead Tester**

Jason Goddard

**Senior Tester**

Justin "Twiggy" Drolet

**Testers**

Michael Alvarino

Daniel Jun Kim

Matthew "Duff" Rappaport

Alessandro Cerff

Jason Elliott

Steve Travers

Steve A. Doria

Jon Singer

Jonathan "Xangel" McMullen

**First Party Supervisor**

Ian Sedensky

**1st Party Testers**

Robin "Peenk" Scofield

Jason Tani

Lori Arrowood

## Music

**Music Licensing**

Randy Eckhardt,  
OnBoard Entertainment

**Boss Martians "AMX"**

Performed by Boss Martians  
Written by Evan Foster,  
Jason Reavis and Steve Davis  
Courtesy of MuSick Recordings  
<http://www.musickrecords.com>  
© 2002 VULNAVIA'S RIDE  
MUSIC (BMI) and TUNELOOM  
MUSIC (BMI)  
administered by Bug

**The Exies "My Goddess"**

"My Goddess"  
Performed by The Exies  
(Scott Stevens, David Walsh,  
Dennis Wolfe, Fred Herrera)  
©2002 WB MUSIC CORP.  
(ASCAP), SONG TOWER (ASCAP),  
SCOTT STEVENS PUB DESIGNEE  
(NS), DAVID WALSH PUB  
DESIGNEE (NS), DENNIS WOLFE  
PUB DESIGNEE (NS) AND FRED  
HERRERA PUB DESIGNEE (NS)  
ALL RIGHTS ADMINISTERED BY  
WB MUSIC CORP. (ASCAP) ALL  
RIGHTS RESERVED.  
USED BY PERMISSION. Courtesy  
of Virgin Records America, Inc.  
Under license from EMI Film  
and TV Music

**Soilwork  
"Natural Born Chaos"**

"Natural Born Chaos"  
Performed by Soilwork  
from the album Natural Born Chaos  
music: Peter Wichers;  
lyrics Björn "Speed" Strid  
Published by Prophecies Publishing  
License courtesy of Nuclear Blast

**Audiovent "Gravity"**

"Gravity"  
Performed by Audiovent  
(Paul Fried, Ben Einziger,  
Jasmin Wilcox, Jason Boyd)  
©2001 THESMELLOFMACGYVER  
MUSIC (ASCAP) AND WB MUSIC  
CORP. (ASCAP) ALL RIGHTS ON  
BEHALF OF ITSELF AND  
THESMELLOFMACGYVER MUSIC  
(ASCAP) ADMINISTERED BY WB  
MUSIC CORP. (ASCAP) ALL  
RIGHTS RESERVED.  
USED BY PERMISSION.  
© 2001 Atlantic Recording Corp.  
Produced Under License From  
Atlantic Recording Corp.  
By Arrangement with  
Warner Strategic Marketing

**The Donnas "Who Invited You"**

"Who Invited You"  
Performed by The Donnas  
Written by Maya Ford,  
Allison Robertson, Brett Anderson,  
Torrance Castellano Courtesy of  
Dream Masters, Inc.  
© 2001 Barbapappa Music (BMI),  
Regal Beagle Music (BMI),  
Busy Loading Music (BMI),  
Ichigo Music (BMI) administered by  
Dream Masters, Inc. © 2001  
Atlantic Recording Corp. Produced  
Under License From Atlantic  
Recording Corp.  
By Arrangement With  
Warner Strategic Marketing

**Audiovent "Energy"**

"Energy"  
Performed by Audiovent  
(Paul Fried, Ben Einziger,  
Jasmin Wilcox, Jason Boyd) ©2001  
THESMELLOFMACGYVER  
MUSIC (ASCAP)  
AND WB MUSIC CORP. (ASCAP)  
ALL RIGHTS ON BEHALF  
OF ITSELF AND  
THESMELLOFMACGYVER MUSIC  
(ASCAP) ADMINISTERED BY WB  
MUSIC CORP. (ASCAP) ALL  
RIGHTS RESERVED. USED BY  
PERMISSION. ©2001 Atlantic  
Recording Corp.  
Produced Under License From  
Atlantic Recording Corp.  
By Arrangement with  
Warner Strategic Marketing

**Juno Reactor "Hotaka"**

"Hotaka"  
Performed by Juno Reactor  
Written by Gocoo, Xavier Morel,  
Steve Stevens, and Ben Watkins  
Courtesy of Beacon Productions,  
Xavier Morel, Songs of  
Windswept Pacific (BMI)  
o/b/o Mute  
Song Limited, and  
Warner/Chappell.  
ALL RIGHTS RESERVED.  
USED BY PERMISSION.

**Treble Charger "Hundred Million"**

"Hundred Million"  
Performed by Treble Charger  
Written by G. Nori, B. Pridle,  
R. Martin, T. MacGregor  
Published by G. Nori, B. Pridle,  
R. Martin, T. MacGregor  
Appears courtesy of Nettwerk  
Productions / BMG Music Canada

**Kazzer "Pedal to the Metal"**

"Pedal to the Metal"  
Performed by Kazzer Brian West  
(SOCAN), Mark Kasprzyk (SOCAN)  
Worldwide West Music Inc.  
c/o Sony/ATV Songs LLC (BMI)  
o/b/o Sony/  
ATV Music Publishing Canada  
Mark Kasprzyk  
publishing designee (SOCAN)  
Courtesy of Epic Records,  
By arrangement with Sony  
Music Licensing

**In Flames "Drifter"**

"Drifter"  
Performed by IN FLAMES  
Music by Bjorn Gelotte/  
Jesper Stromblad/Anders Friden  
Lyrics by Anders Friden  
Published by Prophecies Publishing  
Licensed courtesy of Nuclear Blast

# So you've mastered the game. Now try racing on the real 185hp Supercharged watercraft.



**SEA-DOO®**

Check out the **NEW**  
**185hp Supercharged models**  
and get a **FREE T-shirt!**

*While supplies last.*

Name \_\_\_\_\_

Address \_\_\_\_\_

City \_\_\_\_\_

State \_\_\_\_\_

ZIP \_\_\_\_\_

Phone \_\_\_\_\_

Size:  L  XL

E-mail \_\_\_\_\_

Bombardier Dealer No. \_\_\_\_\_

To claim your T-shirt,  
have your authorized  
Bombardier Sea-Doo®  
dealer write their dealer  
number on this card.  
Then, mail it back to:  
Bombardier Motor  
Corporation of America,  
Attn: T-shirt Offer, 6545  
US 1, Grant, FL 32949.

© 2003 Bombardier Inc. All rights reserved. TM®Trademarks of Bombardier Inc. or its subsidiaries. Products are distributed in the U.S.A. by Bombardier Motor Corporation of America. Offer available to US and Canadian residents, while supplies last. No purchase necessary. No mechanically reproduced cards accepted. Terms and conditions vary from state to state and province to province and the promotion is subject to termination or change at any time without notice. Limit of one T-shirt per individual or household. Bombardier is not responsible for lost, late or misdirected mail. All decisions made by Bombardier Motor Corporation of America relating to the submission are final. Please allow 4-6 weeks for T-shirt to arrive. Void where prohibited.



# LIMITED WARRANTY

## **WARRANTY AND SERVICE INFORMATION**

In the unlikely event of a problem with your product ("Product"), you may only need simple instructions to correct the problem. Please contact the THQ Inc. ("THQ") Customer Service Department at (818) 880-0456 or on the web at <http://www.thq.com> before returning the Product to a retailer. Live Customer Service Representatives are available to help you Monday through Friday 9am to 5pm PST or you can use our automated systems by phone or on the web 24 hours a day, 7 days a week. Please do not send any Product to THQ without contacting us first. Your 5 digit Product Code is 46032. Please use this code to identify your Product when contacting us.

## **LIMITED WARRANTY**

THQ warrants to the best of THQ's ability to the original consumer purchaser of the Product that the medium on which the Product is recorded shall be free from defects in materials and workmanship for a period of ninety (90) days from the original date of purchase. The Product is sold "as is," without express or implied warranty of any kind, and THQ is not responsible for any losses or damages of any kind resulting from use of this Product. If a defect occurs during this ninety (90) day warranty period, THQ will either repair or replace, at THQ's option, the Product free of charge. In the event that the Product is no longer available, THQ may, in its sole discretion, replace the Product with a Product of comparable value. The original purchaser is entitled to this warranty only if the date of purchase is registered at point of sale or the consumer can demonstrate, to THQ's satisfaction, that the product was purchased within the last ninety (90) days.

## **To receive warranty service:**

Notify the THQ Customer Service Department of the problem requiring warranty service by calling (818) 880-0456 or on the web at <http://www.thq.com>. If the THQ service technician is unable to solve the problem by phone or on the web via e-mail, he will authorize you to return the Product, at your risk of damage, freight and insurance prepaid by you, together with your dated sales slip or similar proof-of-purchase within the ninety (90) day warranty period to:

THQ Inc.  
Customer Service Department  
27001 Agoura Road, Suite 270  
Calabasas Hills, CA 91301

THQ is not responsible for unauthorized returns of Product and reserves the right to send such unauthorized returns back to customers.

This warranty shall not be applicable and shall be void if: (a) the defect in the Product has arisen through abuse, unreasonable use, mistreatment or neglect; (b) the Product is used with products not sold or licensed by Sony Computer Entertainment America or THQ (including but not limited to, non-licensed game enhancement and copier devices, adapters and power supplies); (c) the Product is used for commercial purposes (including rental); (d) the Product is modified or tampered with; (e) the Product's serial number has been altered, defaced or removed.

## **Repairs after Expiration of Warranty**

After the ninety (90) day warranty period, defective Product may be replaced in the United States and Canada for US\$25.00. The original purchaser is entitled to the replacement of defective Product for a fee, only if proof of purchase is provided to THQ. Make checks payable to THQ Inc. and return the product along with the original proof of purchase to the address listed above.

## **Warranty Limitations**

THIS WARRANTY IS IN LIEU OF ALL OTHER WARRANTIES AND REPRESENTATIONS. NO OTHER WARRANTIES OR REPRESENTATIONS OR CLAIMS OF ANY NATURE SHALL BE BINDING ON OR OBLIGATE THQ. ANY APPLICABLE IMPLIED WARRANTIES OR REPRESENTATIONS, INCLUDING WARRANTIES OF MERCHANTABILITY AND FITNESS FOR A PARTICULAR PURPOSE ARE HEREBY LIMITED TO NINETY (90) DAYS FROM THE DATE OF PURCHASE AND ARE SUBJECT TO THE CONDITIONS SET FORTH HEREIN. IN NO EVENT SHALL THQ BE LIABLE FOR CONSEQUENTIAL OR INCIDENTAL DAMAGES RESULTING FROM THE BREACH OF ANY EXPRESS OR IMPLIED WARRANTIES.

The provisions of this warranty are valid in the United States only. Some states do not allow limitations on how long an implied warranty lasts or exclusion of consequential or incidental damages, so the above limitations and exclusions may not apply to you. This warranty gives you specific legal rights, and you may also have other rights, which may vary, from state to state.

## **Warning**

Copying of this Product or any of its contents or elements is illegal and is prohibited by United States and international copyright laws. Back-up or archival copies of this Product or any of its contents or elements are not authorized and are not necessary to protect your Product. United States and international copyright laws also protect this manual and other printed matter accompanying this Product. Violators will be prosecuted.

The watercraft racing experience in this video game is intended to be fanciful; do not try these moves in real life. Be a responsible rider. Riding a personal watercraft is an exercise in responsibility to yourself, to others and to the environment. A watercraft is not a toy and can be hazardous to operate. For your safety, wear eye protection, a personal flotation device and wetsuit. Never engage in stunt riding. Avoid excessive speeds, and be particularly careful on choppy waters. And keep in mind that riding does not mix with drugs and alcohol. The watercraft in this video game may differ than actual watercraft in shape, colors and performance.

# YOU WANTED IT. YOU GOT IT.

## MX UNLEASHED™

COMING JANUARY 2004



PlayStation®2



rainbow  
STUDIOS



[www.thq.com](http://www.thq.com)

©2003 THQ Inc. Developed by Rainbow Studios. THQ, Rainbow Studios, their respective logos and the MX Unleashed logo are trademarks and/or registered trademarks of THQ Inc. All Rights Reserved. Splashdown® Rides Gone Wild™ - SEA-D00 is a registered trademark of Bombardier Inc., used under license to THQ Inc. All other trademarks, logos and copyrights are property of their respective owners. All Rights Reserved. Licensed for play on PlayStation 2 computer entertainment systems with the NTSC U/C designation only. "PlayStation" and the "PS" Family logo are registered trademarks of Sony Computer Entertainment Inc. The ratings icon is a trademark of the Interactive Digital Software Association. Manufactured and printed in the U.S.A. THIS SOFTWARE IS COMPATIBLE WITH PLAYSTATION 2 CONSOLES WITH THE NTSC U/C DESIGNATION. U.S. AND FOREIGN PATENTS PENDING.

RATING PENDING



Visit [www.esrb.org](http://www.esrb.org)  
for more ratings  
information.