

Disney's

# KIM POSSIBLE

WHAT'S THE SWITCH?

EVERYONE

**E**

CONTENT RATED BY  
ESRB

bvg

BUENA VISTA  
GAMES

**WARNING: READ BEFORE USING YOUR PLAYSTATION®2 COMPUTER ENTERTAINMENT SYSTEM.**

A very small percentage of individuals may experience epileptic seizures when exposed to certain light patterns or flashing lights. Exposure to certain patterns or backgrounds on a television screen or while playing video games, including games played on the PlayStation 2 console, may induce an epileptic seizure in these individuals. Certain conditions may induce previously undetected epileptic symptoms even in persons who have no history of prior seizures or epilepsy. If you, or anyone in your family, has an epileptic condition, consult your physician prior to playing. If you experience any of the following symptoms while playing a video game — dizziness, altered vision, eye or muscle twitches, loss of awareness, disorientation, any involuntary movement, or convulsions — **IMMEDIATELY** discontinue use and consult your physician before resuming play.

**WARNING TO OWNERS OF PROJECTION TELEVISIONS:**

Do not connect your PlayStation 2 console to a projection TV without first consulting the user manual for your projection TV, unless it is of the LCD type. Otherwise, it may permanently damage your TV screen.

**USE OF UNAUTHORIZED PRODUCT:**

The use of software or peripherals not authorized by Sony Computer Entertainment America may damage your console and/or invalidate your warranty. Only official or licensed peripherals should be used in the controller ports or memory card slots.

**HANDLING YOUR PLAYSTATION 2 FORMAT DISC:**

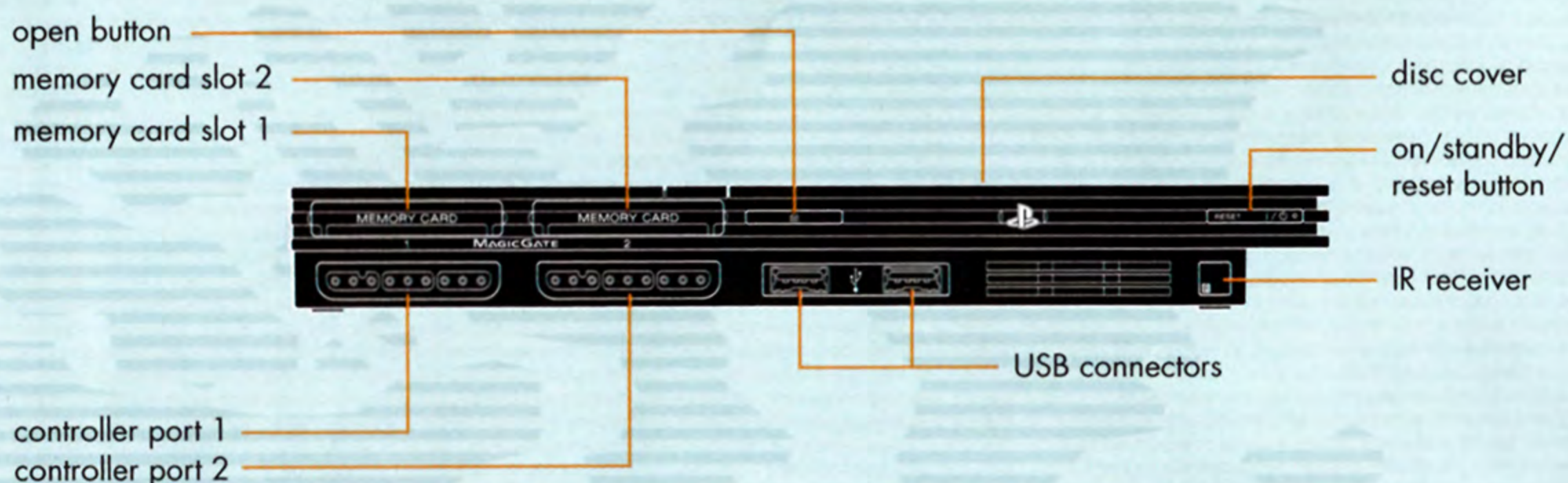
- This disc is intended for use only with PlayStation 2 consoles with the NTSC U/C designation.
- Do not bend it, crush it or submerge it in liquids.
- Do not leave it in direct sunlight or near a radiator or other source of heat.
- Be sure to take an occasional rest break during extended play.
- Keep this compact disc clean. Always hold the disc by the edges and keep it in its protective case when not in use. Clean the disc with a lint-free, soft, dry cloth, wiping in straight lines from center to outer edge. Never use solvents or abrasive cleaners.

# CONTENTS

Getting Started .....	2
Starting Up.....	3
Menu Controls .....	3
In-Game Controls .....	3
What's the Switch?.....	4
Let's Get Started.....	5
Main Menu .....	6
Options .....	7
Pause .....	8
Save.....	8
Here's the Sitch!.....	9
Main Game Screen .....	9
Kim & Shego's Moves .....	10
Kim & Shego's Combat Skills .....	11
Rufus .....	13
Gadgets & Powers .....	14
Gadget Parts & Other Things.....	15
Foes .....	16
Limited Warranty .....	17
Customer Support .....	17



# GETTING STARTED



Set up your PlayStation<sup>®</sup>2 computer entertainment system according to the instructions supplied with your system. Check that the system is turned on (the on/standby indicator is green). Press the OPEN button to open the disc cover. Place the **Disney's Kim Possible: What's the Switch?** disc with the label side facing up in the disc holder, and then close the disc cover. Attach game controllers and other peripherals, as appropriate. Follow the on-screen instructions and refer to this manual for information on using the software.

## Memory Card (8MB)(for PlayStation<sup>®</sup>2)

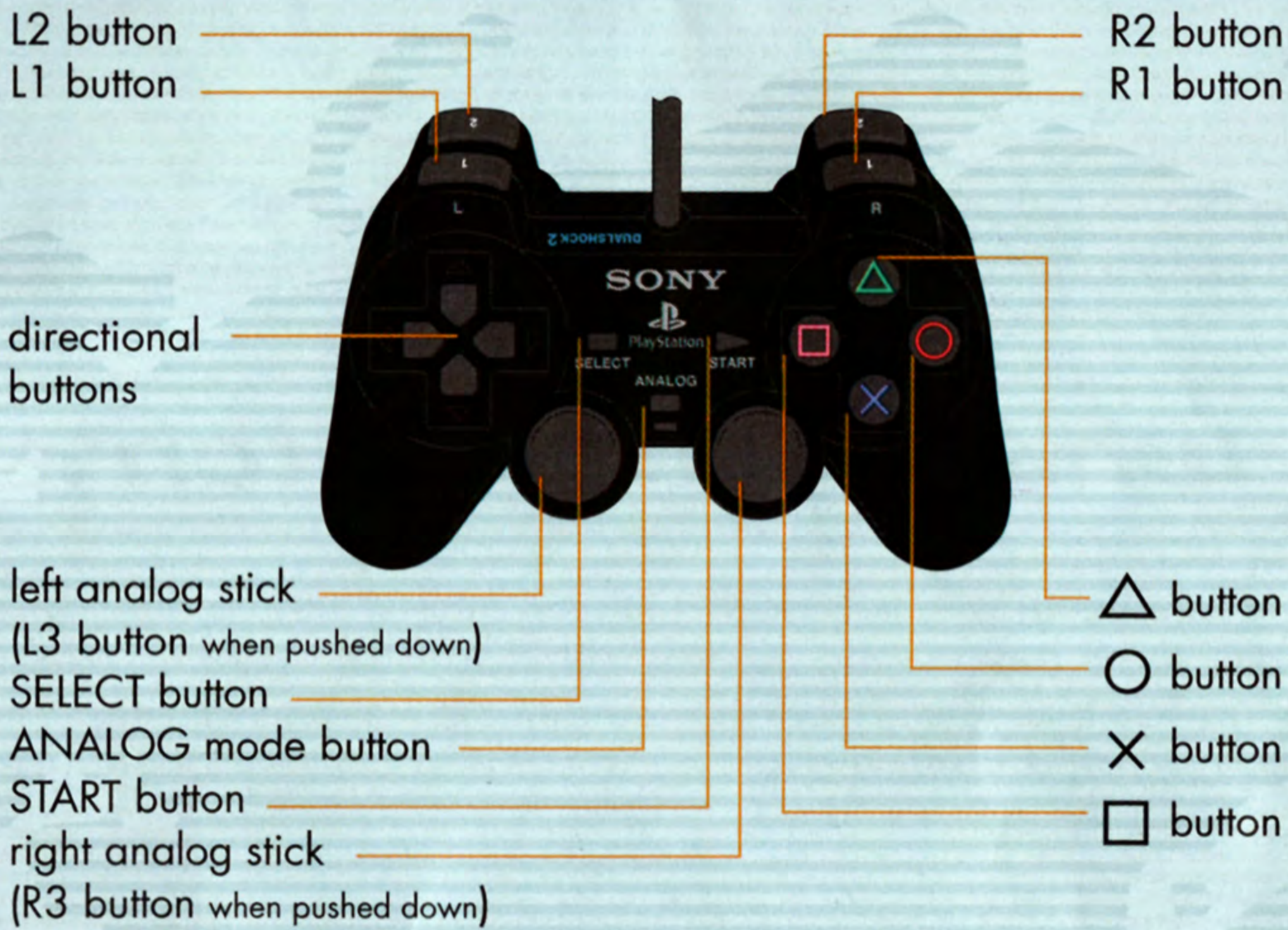
To save game settings and progress, insert a memory card (8MB)(for PlayStation<sup>®</sup>2) into MEMORY CARD slot 1 of your PlayStation<sup>®</sup>2 system. You can load saved game data from the same memory card or any memory card (8MB)(for PlayStation<sup>®</sup>2) containing previously saved games.

# QUICK START

If you like, skip all the reading and get Kim and Shego ready to jet... right away! However, you'll find more information about both girls and their abilities in the pages that follow. Here's an early tip: Both Kim and Shego are agile but Kim prefers cunning while Shego prefers brute force.

# STARTING UP

## DUALSHOCK®2 ANALOG CONTROLLER CONFIGURATIONS



### MENU CONTROLS

**Directional buttons** ↑/↓/←/→  
⊗ button  
△ button

Highlight menu options  
Select / Confirm  
Return to previous screen

### IN-GAME CONTROLS

These are the controller settings for *Kim and Shego*.

**Left analog stick** [LEFT/RIGHT]

**Directional buttons** ←/→

⊗ button  
□ button  
○ button  
△ button  
L1 button  
R1 button  
L2 button  
R2 button  
START button

**Right analog stick** [LEFT/RIGHT]

Movement  
Move left and right  
Jump (Tap again in midair to Double Jump)  
Punch (Tap three times for a Combo)  
Use selected gadget  
Kick (Tap three times for a Combo)  
Handspring left  
Handspring right  
Switch Gadget or Power  
Switch Gadget or Power  
Pause Menu  
Choose gadget/power/  
Press to show interface



## ***What's The Switch?***

Kim Possible and Shego are like oil and water, matter and anti-matter: they never mix. Kim is all about acrobatic finesse and fighting for good, and Shego uses her awesome strength to fight for evil. And, if they're ever in the same room... lookout fireworks are gonna fly!

That is, fireworks flew until Kim's pal Ron Stoppable's brain was switched with Dr. Drakken's brain. Kim and Shego aren't sure how it happened (something about a "Monkey Idol"), but now the former arch-enemies must work together to put Ron and Drakken's brains back where they belong.


If they succeed... will the pair remain allies afterward?

Anything's possible!

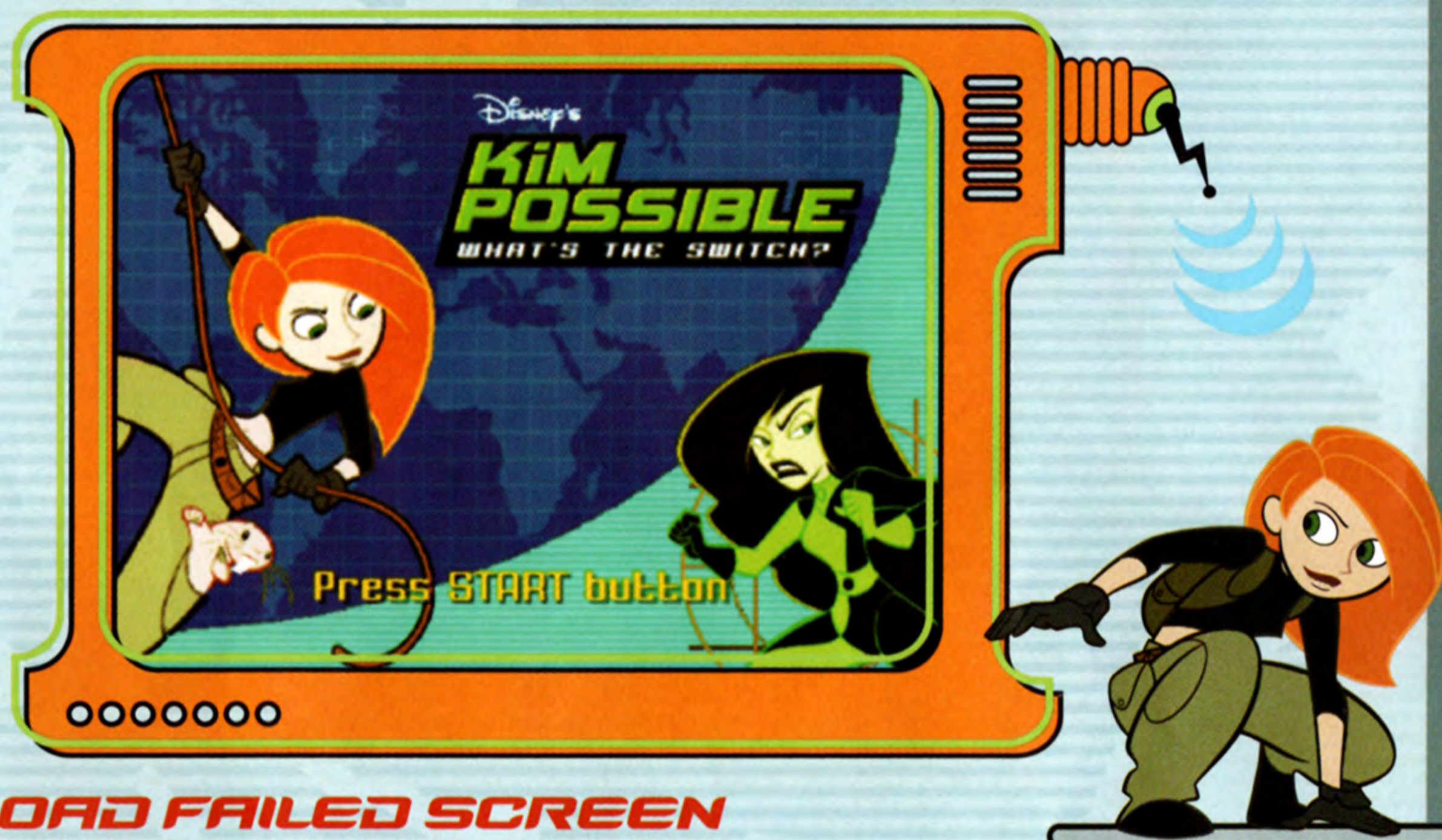


# LET'S GET STARTED!


## TITLE SCREEN

Press the  button to open the Main Menu.

Load a saved game or select an empty slot from your Memory Card. The game will automatically save your progress as you play.



## LOAD FAILED SCREEN

If you don't have a Memory Card inserted into Memory Card slot 1, or if you have a Memory Card inserted but no game saved to it; then you will see this screen. Press the  button to continue to the Main Menu.



# MAIN MENU



## NEW GAME

Select this to begin a brand new game. Choose **Single Player** to play as both Kim and Shego. Choose **Tag Team** to take turns with a friend when you lose a life.

## LOAD GAME

Look here to open a previously saved game.

## MULTIPLAYER

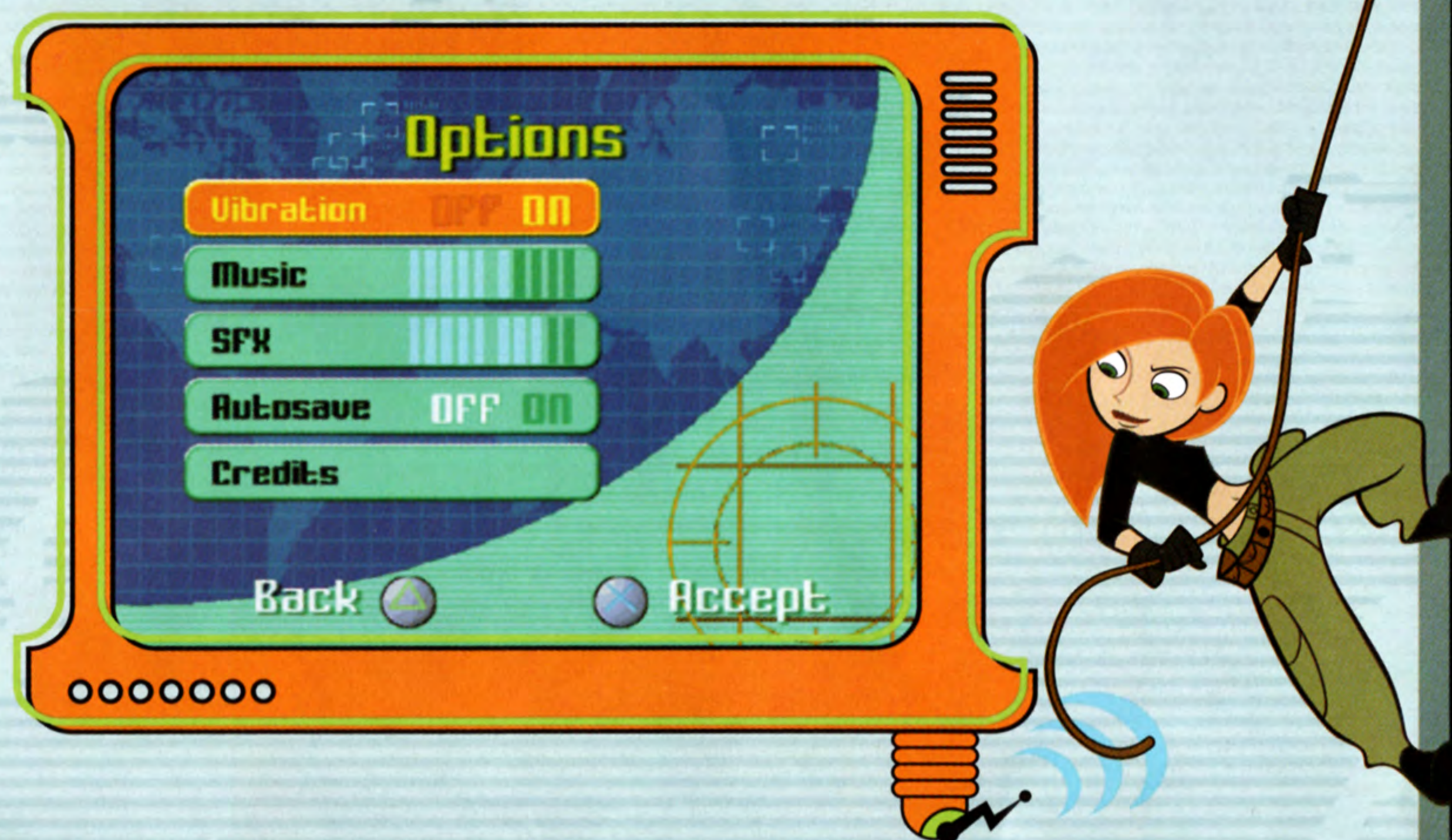
Clear certain missions as Kim and Shego defeat their foes, and they'll unlock multiplayer games you can play with your friends.





## OPTIONS

Open this menu to adjust various settings described below.



### VIBRATION

Press the **X** button to switch ON/OFF the Vibration Function of your DUALSHOCK<sup>®</sup>2 analog controller.

### MUSIC

Press directional button **←** to lower the music volume or directional button **→** to raise the music volume. When you are finished, press the **X** button to return to the Main Menu.

### SFX

Press directional button **←** to lower the sound effects volume or directional button **→** to raise the sound effects volume. When it sounds just right, press the **X** button to return to the Main Menu.

### AUTOSAVE

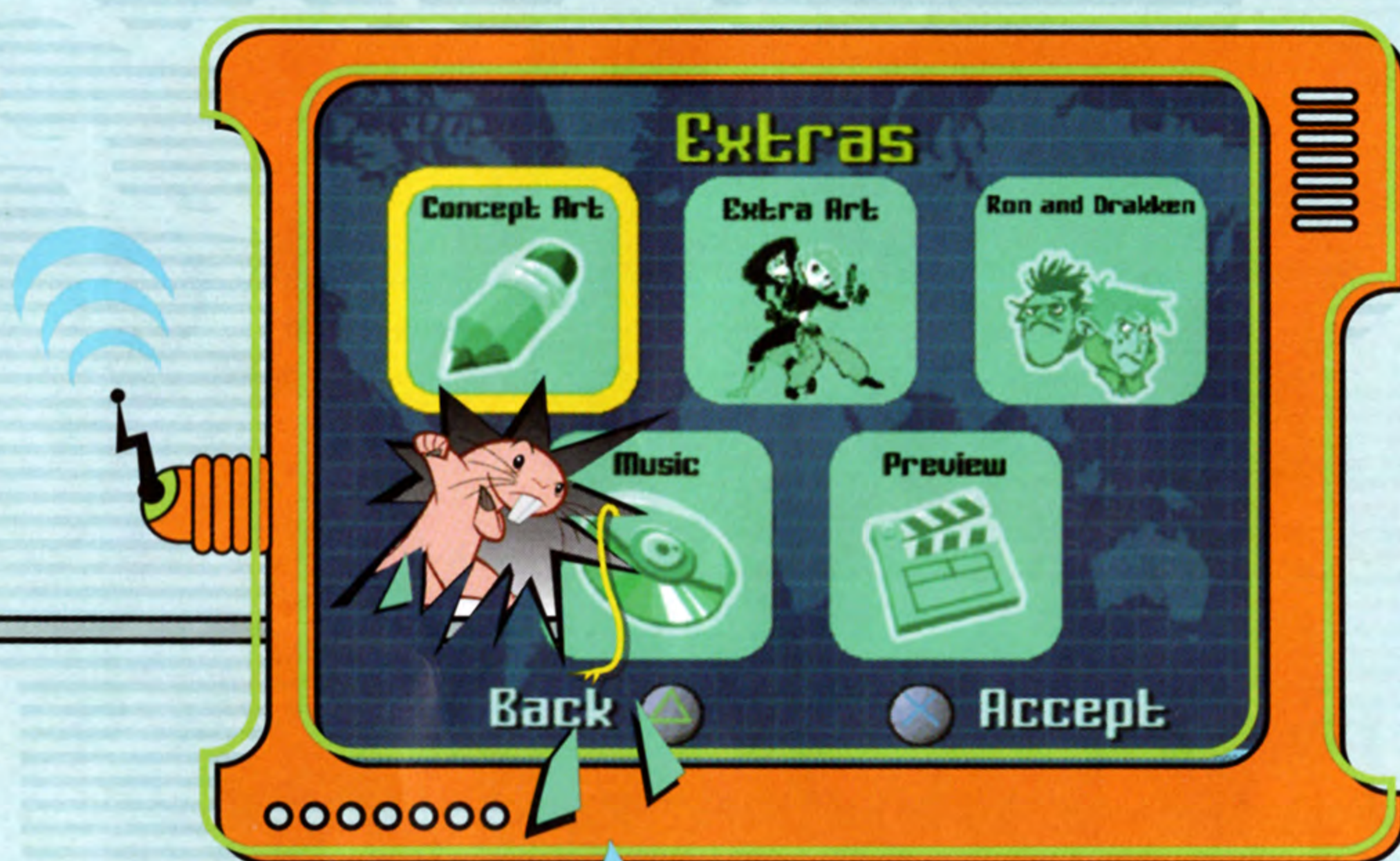
Turn the autosave function OFF or ON.  
Remember, without autosave your progress will not be tracked!

### CREDITS



Open this to see the names of all the people who helped create **Kim Possible: What's the Switch?** Press the **X** button to return to the Options Menu.

## EXTRAS

Hmm, mysterious. Something goes here, but what? *RUFUS!* Stop that! Find out by completing Missions or by collecting 100% of the Kimmunicator tokens in a Mission or by finding all of the Club Banana tokens for Kim or Shego.



## PAUSE

Need a break? Press the  button to pause the game. Choose Resume to keep playing the game, or Quit Game to go back to the Main Menu. If you choose Quit Game, you will be asked if you are sure you want to – select **Yes** to confirm, or **No** to go back to the Pause Menu. When you're ready to rejoin Kim and Shego, press the  button again.

## SAVE

**Kim Possible: What's the Switch?** saves your game automatically. Your progress is saved whenever you complete a level. Select "Load Game" from the Main Menu to choose from up to three saved games.

# Here's the Sitch!

Go team! And what a team Kim Possible and Shego are, jumping, swinging and fighting their way through hordes of monkeys, henchmen, robots, and whatever else Dementor and Monkey Fist have created. But they won't get far without your help. Play as both Kim and Shego or you can play with a friend in "Tag Team Multiplayer" mode, each player taking turns guiding one of the fearsome twosome.

However you play, one thing's for sure: Ron and Drakken can't stay the way they are forever. You better zoom!

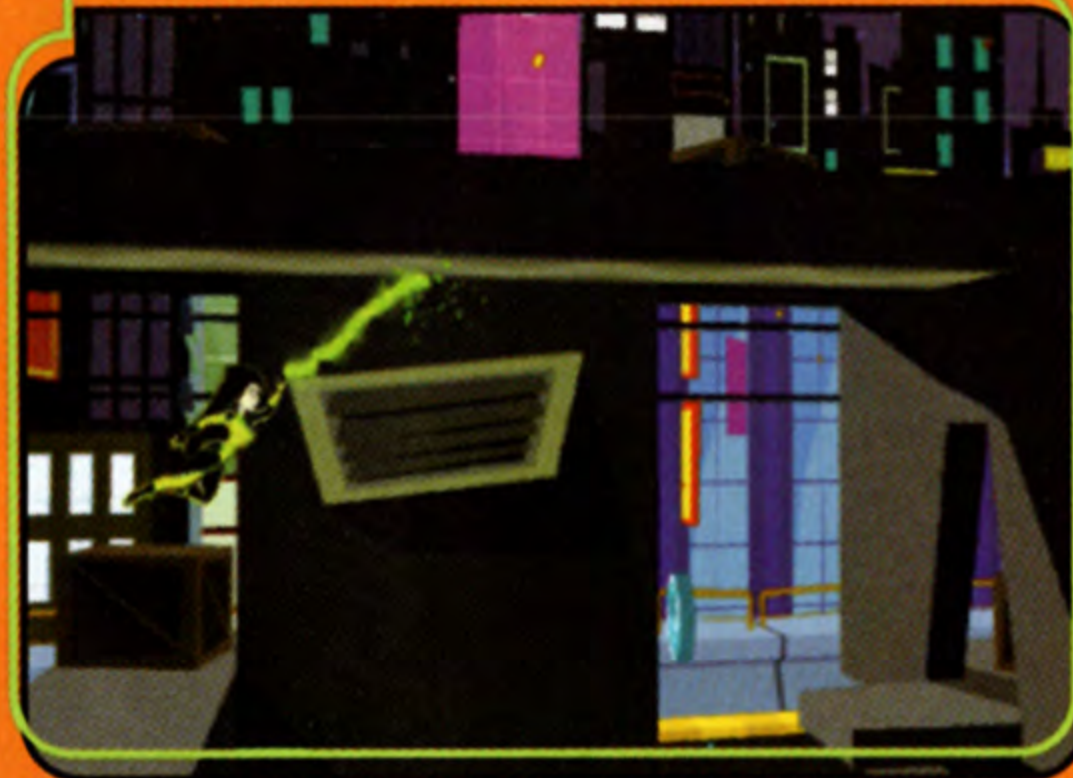
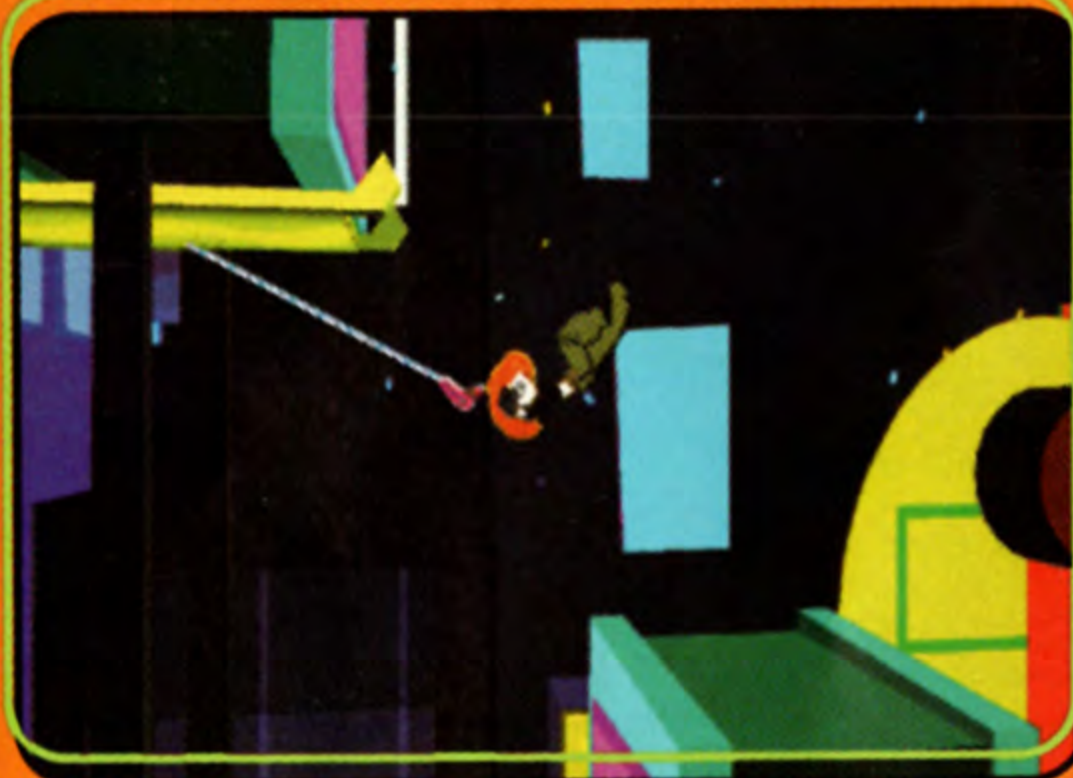
## MAIN GAME SCREEN

The Kimmunicator is always visible in the upper left corner, even when Shego is in action. Pull-down counters to keep track of lives and tokens. Press right analog stick to view these meters anytime. The Kimmunicator shows you Kim or Shego's health (the red bar) and which Kim gadget or Shego power is active:



## KIM & SHEGO'S MOVES

Even though they are unlikely allies, Kim and Shego have a lot in common. Both are daring. Both are ready for anything. Both are skilled acrobats, capable of the most amazing feats of strength and agility.



oooo

### RUN

Use directional button ← and directional button → or left analog stick LEFT or RIGHT to run left and right.

### HANDSPRING

Press and hold the **L1** button or the **R1** button to perform handsprings to the left or to the right.

### JUMP

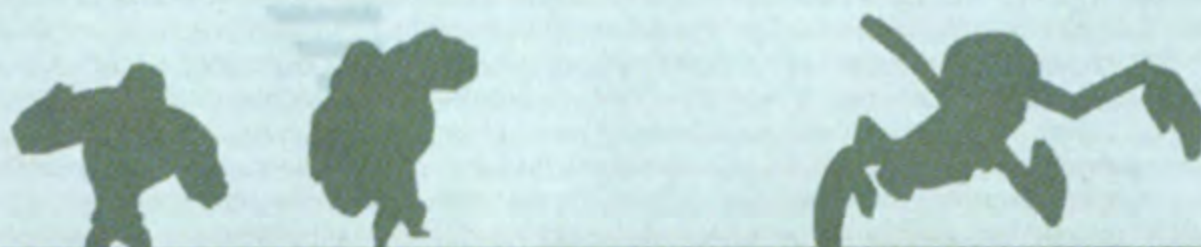
Kim and Shego will do a lot of jumping as they solve the mystery of Ron and Drakken's mixed-up brains. Tap the **X** button for a simple jump.

### DOUBLE JUMP

Double-tap the **X** button to turn a simple jump into a double jump. It's almost twice the height of a regular jump.

### HANDSPRING JUMP

A handspring (**L1** or **R1**) already covers a lot of ground. Tap the **X** button during the handspring to perform a handspring jump and fly about twice as far as a normal jump.



## **WALL BOUNCE**

Jump or double jump into a wall, then tap the **X** button to spring off in the opposite direction.

## **LEDGE UP**

Press directional button **↑** or left analog stick up to scramble up a ledge. Press the **X** button to jump up. If Kim or Shego are close to a ledge following a jump, they'll grab it automatically.

## **LEDGE DROP**

Should Kim or Shego decide not to climb up that ledge, press directional button **↓** or left analog stick down to drop back down.

## **FLAGPOLES & PIPES**

When Kim or Shego jump toward a flagpole or pipe they'll grab on automatically. After that it's up to you. Tap the **X** button to fly off. If there's another pole or pipe nearby, try to swing over and grab it in mid-air

## **KIM & SHEGO'S COMBAT SKILLS**

After thrilling acrobatics comes the real fun – battling henchmen and robot monkeys and spirit monkeys... OH MY! Study your opponent's tactics and adjust your strategy to suit. If your foe is blocking your jump kicks, try a sliding kick instead. That's how you win!

## **PUNCHES**

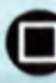
Punching is fundamental. Press the **□** button to sock 'em one.



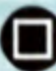
oooo



### **QUICK PUNCH COMBO**

Double-tap the  button for a quick one-two punch.

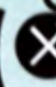
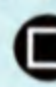
### **TRIPLE PUNCH COMBO**

This combo is devastating if either Kim or Shego throw it. Tap the  button three times in a row.

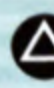
### **UPPERCUT**

The uppercut is truly a stunning punch. Crouch (directional button ) , and then tap the  button.

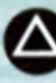
### **JUMP PUNCH**

Throw a punch in mid-air (while dodging an opponent, maybe). Hit jump and punch at the same time ( + ).

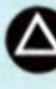
### **KICKS**

Tap the  button for a basic, chest-thumping kick. This kick will also help you to squeeze into tight spots.



### **QUICK KICK COMBO**

Double-tap the  button for twice as much kick.



### **TRIPLE KICK COMBO**

One, two, three kicks in a row! Tap the  button three times in a row.





### **JUMP KICK**

Not as quick as a regular kick, but hurts more and stuns your opponent. Jump (), then kick ().

### **SLIDING KICK**

Use this to take out your opponent's feet and stun them briefly. Crouch (directional button  or left analog stick down) and then kick ().

### **DROP STRIKE**

Jump up in the air, then drive straight down onto your opponent – or onto a weak spot in the floor. Jump (), then directional button  + the  button. This useful move can also be triggered by pressing the  button.





## RUFUS

Ron's favorite naked mole rat just may become Shego's favorite naked mole rat, too. He will crawl into places Kim and Shego can't go and help out with a well-timed hop or toothy gnaw.

### RUN

Directional button ←/→ or right analog stick left/right. With his sharp claws, Rufus can cling to ceilings as well as floors.

### JUMP

Tap the ⊗ button to jump. If he jumps near a wall, he'll stick to it!

### CLIMB

Use directional buttons ↑/↓ to climb up and down vertical walls and barriers. Watch out for white-hot steam!

### GNAW/HOP

To hop up and down on a switch or chew through a wire, tap the ⊙ button as fast as you can.



# GADGETS & POWERS



Wade has outfitted Kim with her familiar arsenal – hair dryer grappling hook, chewing gum immobilizer and the Electro Magnetic Scrambler. This time, Wade has come up with some new ways for Shego to use her powers so she's ready for anything, too. Push right analog stick left/right or use the **L2** and **R2** buttons to cycle through and select available gadgets or powers (viewable in the Kimmunicator). Tap the **○** button to use.

## **KIM'S GRAPPLING HOOK**



Scale the heights and swing across wide chasms with Kim's... hair dryer. Press the **○** button to activate. The grappling hook fires up at a 45 degree angle. Once it's hooked to the target, use directional buttons **←/→** to swing and directional buttons **↑/↓** to shorten or lengthen the rope. Tap the **×** button or the **○** button to let go and fly off.

## **KIM'S GUM**



Fling a wad of sticky chewing gum at a foe's feet and leave him stuck right there. Press the **○** button to activate. The chewing gum is also good for jamming buttons and levers open or closed. Tap the **○** button to fling some gum in the direction Kim faces.

## **KIM'S ELECTRO-MAGNETIC SCRAMBLER A.K.A. - [EMS]**



Some of Professor Dementor's inventions include complex electronics that make them invisible. Wade thinks the Electro Magnetic Scrambler just might scramble the signal, allowing Kim to get a good look at hiddentoos. The EMS is also good at revealing electronically hidden ledges and walls.

## **SHEGO'S GRAPPLE BEAM**




This works like Kim's grappling hook, but uses a green power beam instead of a hair dryer. After firing the beam with the **○** button, use directional button **←/→** to swing and directional button **↑/↓** to control the length of the beam. Tap the **×** button or the **○** button to let go and fly off.



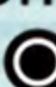


### **SHEGO'S MAGNE-GO**

Wade's invention puts the power of metallic attraction into Shego's hands. Anything made of metal – levers, robots, boxes – can be pulled irresistibly toward her. Press and hold the  button to activate.



### **SHEGO'S ELECTRO-MAGNETIC PUNCH A.K.A. - (E.M. PUNCH)**

This is similar to Kim's EMS, except Wade has figured out a way to use Shego's power to disrupt electronic signals (such as those used by stealthy foes). The pulse is so powerful that nearby enemies are likely to be momentarily stunned. Tap the  button to throw an E.M. Punch.

## **GADGET PARTS**

What's Collectible you ask?

### **HEARTS**

A small heart heals Kim or Shego just a little. A big heart heals Kim or Shego a lot – all the way to full health!

### **KIMMUNICATOR TOKENS**

In Tag Team mode try to collect more Kimmunicator tokens than your partner. Otherwise, collect 100% of them in a mission to unlock Extras!

### **CLUB BANANA TOKENS**

Like Kimmunicator tokens, collect them all during a mission to unlock Extras.

### **KP TOKENS**

KP tokens are super-valuable! Each one adds a life.

### **SPECIAL MISSION TOKENS**

Collect these to unlock secret missions!

### **OUTFIT**

Hidden inside each level is a Club Banana icon. Collect all of these to access the Club Banana clothing collection.

AND  
OTHER  
THINGS!



# FOES

Kim and Shego will face a variety of evil-minded foes, but don't freak out. Review this list of some of them and you'll be ready for anything.



## **SPIRIT MONKEY**

Monty Fiske conjured these ghost monkeys and now they haunt his castle. So not scary!



## **HENCHMAN**

Where does Professor Dementor find these guys? They look a little like Drakken's low quality, easy to beat Henchmen, but watch out! These are much tougher than those.



## **STEALTH HENCHMAN**

Hard to see and impossible to punch or kick. Impossible, that is, until Kim disables his electronic cloaking device.



## **ROBOT MONKEY NINJA**

Scarier than Spirit Monkeys, Robot Monkey Ninjas are tough; but don't freak out.



## **MINI-MECHA MONKEY**

These seem to be related to Robot Monkey Ninjas, but so not hard to defeat; especially for Kim and Shego.



## **DRONES**

Drones of various types are more of a bother than a danger, although they can cause Kim and Shego some pain. A punch or a kick will mangle most beyond repair.



## LIMITED WARRANTY

Publisher warrants the recording medium on which the software is recorded to be free from defects in materials and workmanship under normal use for a period of ninety (90) days from the date of purchase as evidenced by a copy of the sales receipt or packing slip. Publisher's entire liability and your exclusive remedy will be replacement of the defective recording medium(s) or refund of the purchase price (at publisher's election) upon return of the software to publisher with a copy of your proof of purchase. Publisher will have no responsibility to replace a recording medium damaged by accident, abuse or misapplication. Any implied warranties and/or conditions on the recording medium, including the implied warranties and/or conditions of merchantability and fitness for a particular purpose, are limited in duration to ninety (90) days from the date of purchase or delivery. This warranty gives you specific legal rights, and you may also have other rights which vary from jurisdiction to jurisdiction. You expressly acknowledge and agree that use of the software is at your sole risk. The software and related documentation are provided "as is" and without warranties and/or conditions of any kind either express or implied. Publisher expressly disclaims all warranties and/or conditions, express or implied, with respect to the software and related documentation, including, but not limited to, the implied warranties and/or conditions of merchantability and fitness for a particular purpose. Publisher does not warrant that the functions contained in the software will be uninterrupted or error-free, or that defects in the software will be corrected. Furthermore, publisher does not warrant or make any representations regarding the use or the results of the use of the software and related documentation in terms of their correctness, accuracy, reliability, or otherwise. The limitations of liabilities described in this section also apply to the third party suppliers of materials used in the software. No oral or written information or advice by publisher or an authorized representative of publisher shall create warranties and/or conditions or in any way increase the scope of this limited warranty. You (and not publisher) assume the entire cost of all necessary servicing, repair or correction. Some jurisdictions do not allow the exclusion of implied warranties, so the above exclusion may not apply to you. Under no circumstances, including negligence, shall publisher be liable for any indirect, incidental, special or consequential damages that result from the use of, or the inability to use, the software or related documentation, even if publisher or an authorized representative of publisher has been advised of the possibility of such damages. Some jurisdictions do not allow the limitation or exclusion of liability or incidental or consequential damages, so the above limitation or exclusion may not apply to you. In no event shall publisher's total liability to you for all damages, losses, and causes of action [whether in contract, tort (including negligence) or otherwise] exceed the amount paid by you for the software.

## Customer Support Information

### Internet Support

To access information about Buena Vista Games, an affiliate of The Walt Disney Company, on the World Wide Web, point your browser to [www.bvg.com/support](http://www.bvg.com/support). From there, you may also email a Customer Support representative by clicking on the "**Contact Us**" link and selecting the appropriate email option.

### Games Hints and Tips

Game hints and tips are available on the Buena Vista Games Customer Support website. To access Game Hints and Tips on the World Wide Web, point your browser to [www.bvg.com/support](http://www.bvg.com/support).

### Mailing Address

If you wish to write us, our address is: **Buena Vista Games Customer Support, 500 South Buena Vista Street, Burbank, CA 91521-8139.**

### Telephone Support

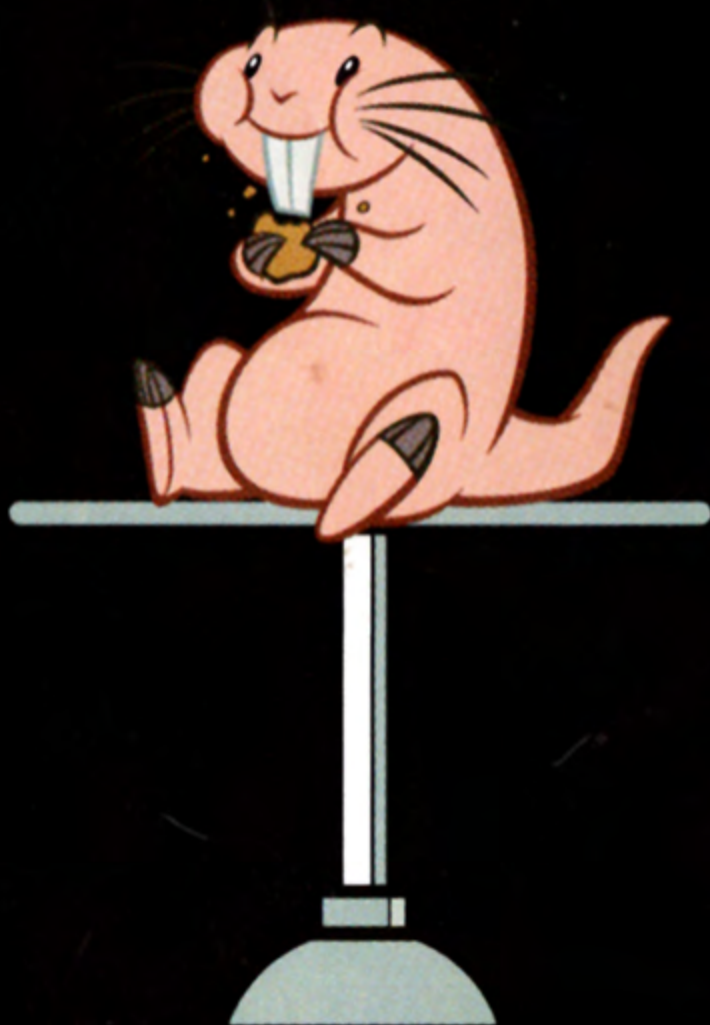
You may contact Customer Support at **(866) 252-8108**. If you need additional information, our Customer Support staff for the U.S. and Canada is available Monday through Friday from 8:30 a.m. to 5:30 p.m. (Pacific Time).

### TTY/TDD Users

Please contact us by telephone through your local relay service. Customer Support staff for TTY/TDD users is available Monday through Friday 8:30 a.m. to 5:30 p.m. (Pacific Time). Our toll free number is **(866) 252-8108**.

© Disney.

*Well done Rufus!*



Buena Vista Games  
500 S. Buena Vista St.  
Burbank, CA 91521

N0551 © Disney