

1935
JOURNAL

INDIANA JONES
AND THE
EMPEROR'S TOMB™





HEALTH BOARD NOTICE:

Safety Advisory For Travelers Abroad

POST 05 JAN 1935]

WARNING: READ BEFORE USING YOUR PLAYSTATION®2 COMPUTER ENTERTAINMENT SYSTEM.

A very small percentage of individuals may experience epileptic seizures when exposed to certain light patterns or flashing lights. Exposure to certain patterns or backgrounds on a television screen or while playing video games, including games played on the PlayStation 2 console, may induce an epileptic seizure in these individuals. Certain conditions may induce previously undetected epileptic symptoms even in persons who have no history of prior seizures or epilepsy. If you, or anyone in your family, has an epileptic condition, consult your physician prior to playing. If you experience any of the following symptoms while playing a video game – dizziness, altered vision, eye or muscle twitches, loss of awareness, disorientation, any involuntary movement, or convulsions – IMMEDIATELY discontinue use and consult your physician before resuming play.

Don't forget to bring spectacles this trip!

WARNING TO OWNERS OF PROJECTION TELEVISIONS:

Do not connect your PlayStation 2 console to a projection TV without first consulting the user manual for your projection TV, unless it is of the LCD type. Otherwise, it may permanently damage your TV screen.

USE OF UNAUTHORIZED PRODUCT:

The use of software or peripherals not authorized by Sony Computer Entertainment America may damage your console and/or invalidate your warranty. Only official or licensed peripherals should be used in the controller ports or memory card slots.

HANDLING YOUR PLAYSTATION 2 FORMAT DISC:

- This disc is intended for use only with PlayStation 2 consoles with the NTSC U/C designation.
- Do not bend it, crush it or submerge it in liquids.
- Do not leave it in direct sunlight or near a radiator or other source of heat.
- Be sure to take an occasional rest break during extended play.
- Keep this compact disc clean. Always hold the disc by the edges and keep it in its protective case when not in use. Clean the disc with a lint-free, soft, dry cloth, wiping in straight lines from center to outer edge. Never use solvents or abrasive cleaners.

Update: Customs requires all medications obtained outside of the United States be accompanied by documentation at the time of reentry. No exceptions.

071342

This information provided by request of the American Consulate and can be obtained at any U.S. Emba

jan 5

Marcus says I need a calling card for when I'm out in the field and not "immersed in academia." I've scribbled some lettering to mull over, and attached it to the cover. I think it suits me.

My colleagues at the College think I focus too much on my duties outside the classroom. What's the use of research if it has no practical application? Still, I need to make sure I have this semester's curriculum outlined before I get too involved in another assignment for the museum.

If it weren't for the steady pay I'd take a job less strenuous than teaching! The artifacts from the class field trip only date back a few hundred years, but I know Marcus will still be interested.

jan 6

Contents

To organize my thoughts I'm referencing important material on this first page. Dad always carried a journal so he'd remember every experience. Unfortunately for me, Dad never forgets!

Getting Started 2	Inventory 27
Starting Up 3	Saving and Loading 28
Main Menu 7	How to Contact LucasArts 30
Options 7	Credits 32
Research 10	LucasArts Company Store 34
Basic Moves 15	Software License and Limited Warranty 36
Special Moves 16	
Combat Moves 20	
Action Icons 24	
Status 25	

龍之心

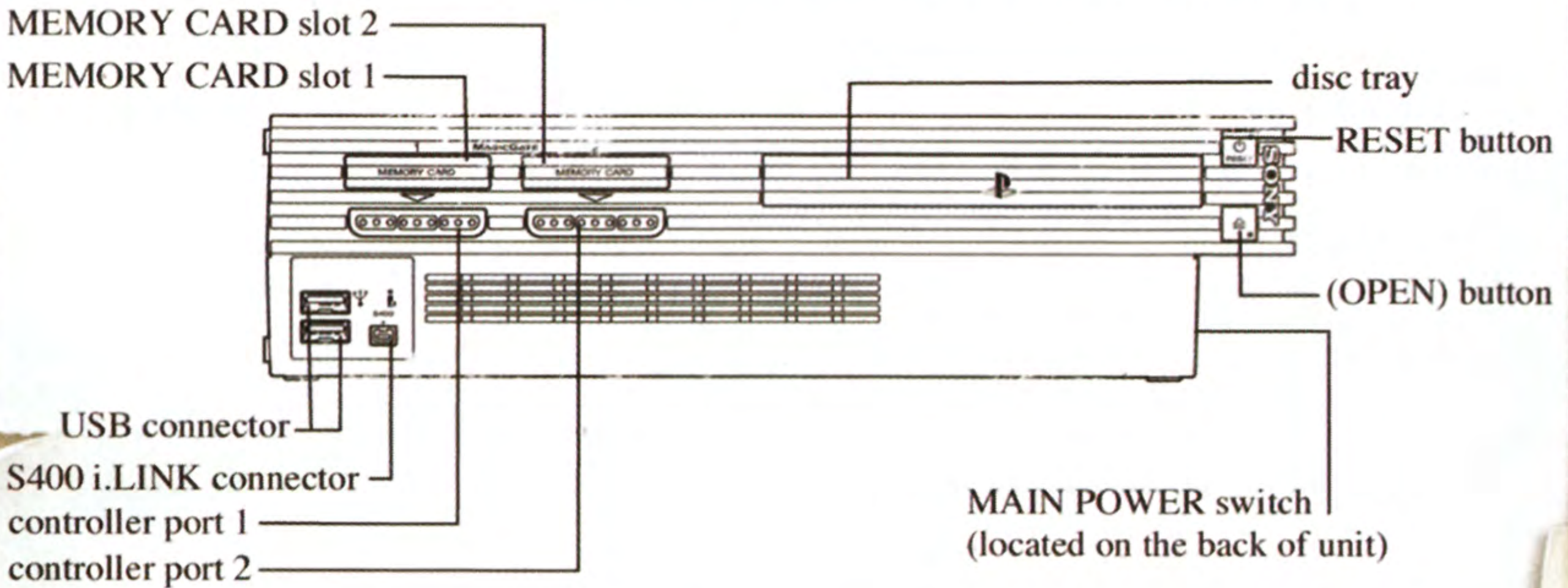
SETUP & ID

DN

Indy - this artifact comes from our museum Archives and so far our researchers have been unable to identify it. Obviously it is very sophisticated. See what you can do. Marcus

RENDITION:

PLAYSTATION®2 COMPUTER ENTERTAINMENT SYSTEM



NATIONAL MUSEUM ANTIQUITIES ARCHIVE RESEARCH
 THIS FORM AND ITS CONTENTS ARE CONFIDENTIAL UNTIL VERIFICATION PROCESS IS COMPLETE

DESCRIPTION:

GETTING STARTED

Set up your PlayStation®2 computer entertainment system according to the instructions in its Instruction Manual. Make sure the MAIN POWER switch (located on the back of the console) is turned on. Press the RESET button. When the power indicator lights up, press the open button and the disc tray will open. Place the **Indiana Jones® and the Emperor's Tomb™** disc on the disc tray with the label side facing up. Press the open button again and the disc tray will close. Attach game controllers and other peripherals, as appropriate. Follow onscreen instructions and refer to this manual for information on using the software.

RESEARCHER:	Prof. H. Jones Jr.
CURATOR:	Marcus Brody

240
 Prague
 2 Discover

THIS DOCUMENTATION IS COMPLETED IN ACCORDANCE WITH THE INTERNATIONAL TREATY FOR THE PROTECTION OF ANTIQUITIES

ALL SIGNED FORMS MUST ACCOMPANY ARTIFACT(S) BEFORE RELOCATION TO ARCHIVE STORAGE



Barnett College

*Jones,
I expect you will
not follow convention
but the trustees
require me to review
this with you
shedly*

INTERDEPARTMENT MEMO 01/09/35

Department Heads route to all instructors. These guideline and changes take effect immediately. Use as outlined below

ATTN: New departmental procedures concerning the manipulat regulatory controls. See diagram for specifications and ex

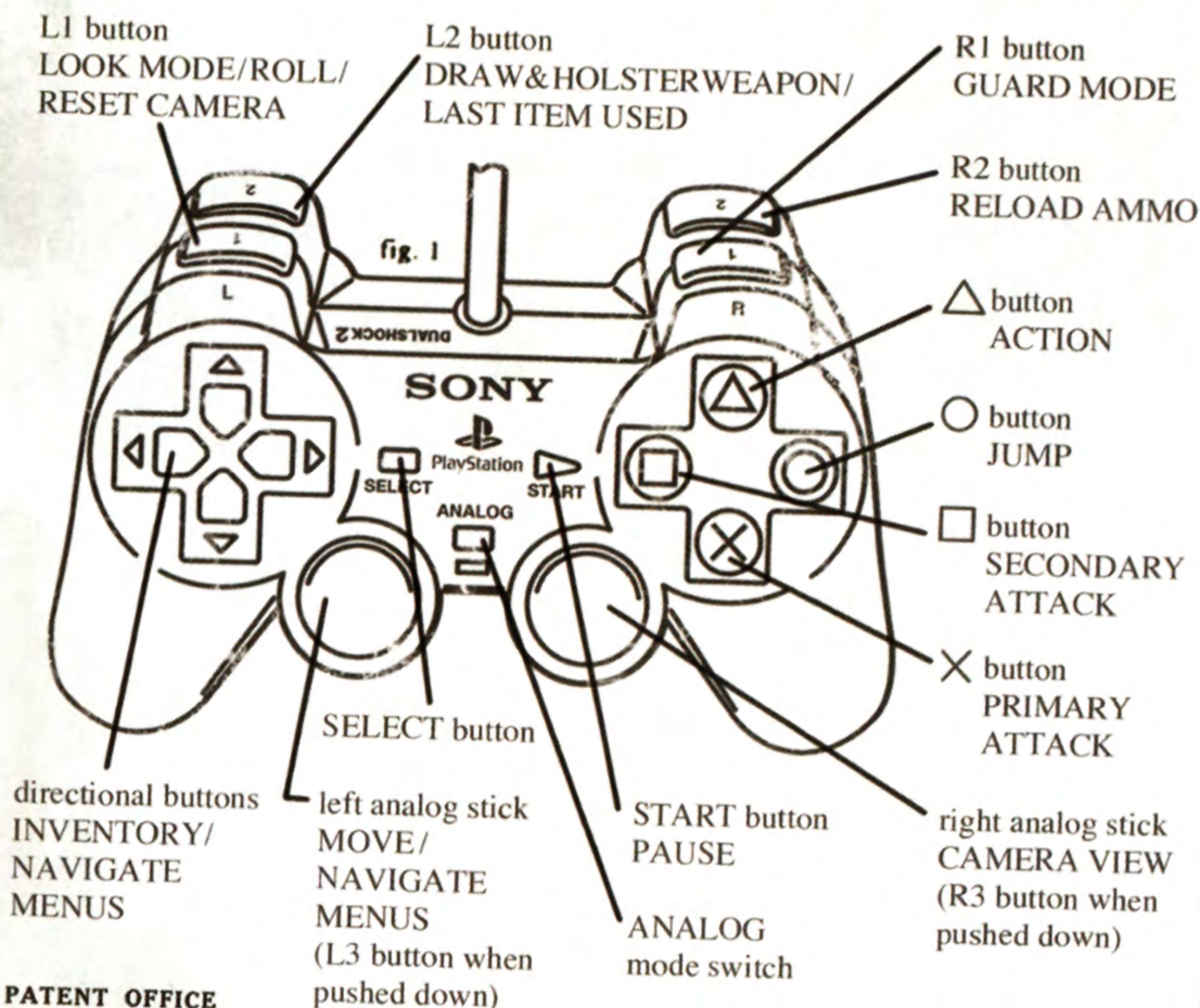
STARTING UP

Filed Dec. 14, 1932

4 Sheets-Sheet 1

Jan. 1, 1935. 1,985,884

DUALSHOCK®2 ANALOG CONTROLLER CONFIGURATION



PATENT OFFICE

28 Claims. (Cl. 74-336.5) Serial No. 647,157



I have read the above and agree to these procedures as outlined by this institution.

Any instructors who do not adhere to these procedures will and reduced effectiveness in their control. Please recog

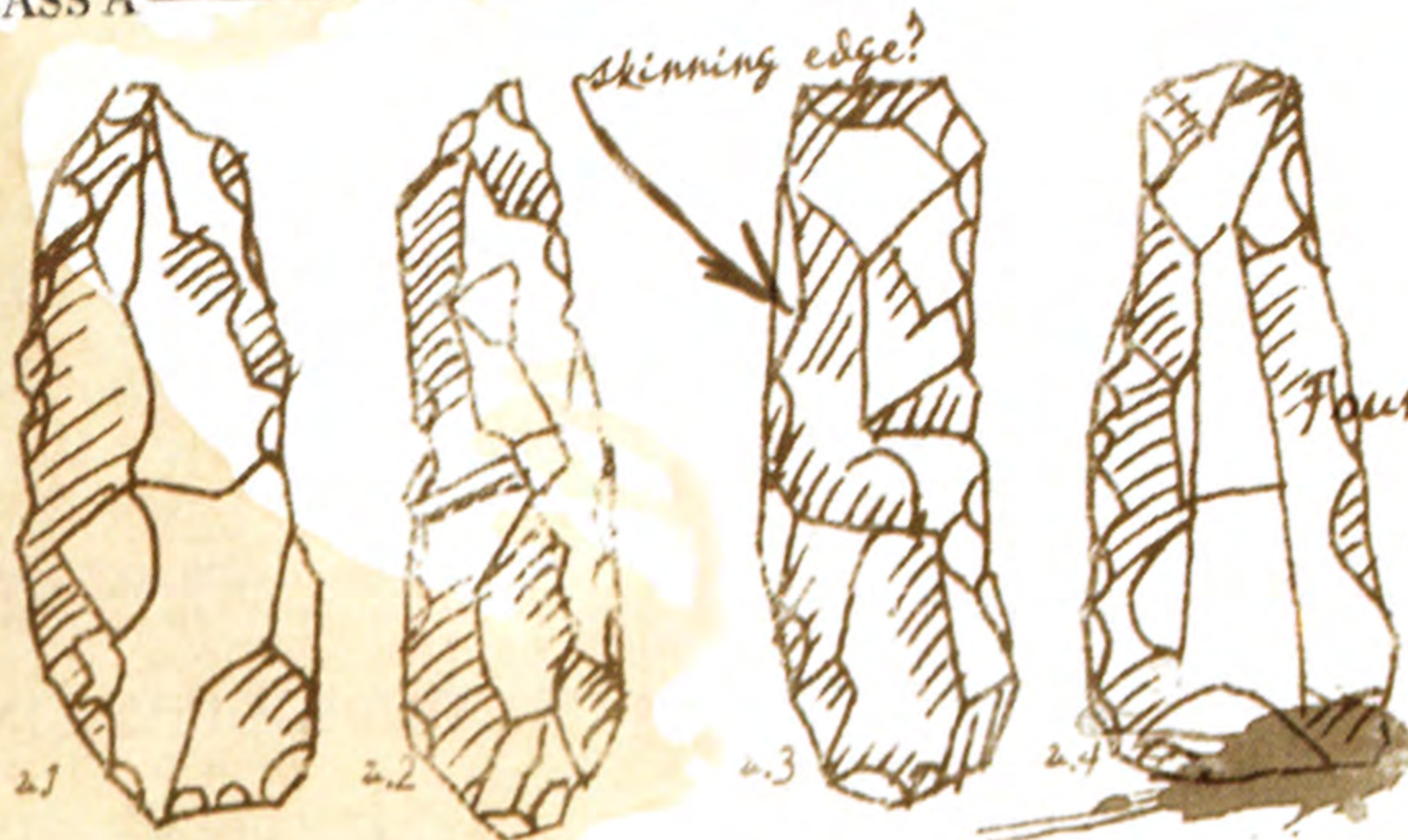
Diagrams and information provided by the campus Board of Education, courtesy of the Patent Office, reg. 052489

EXCAVATION WORKSHEET

For Commonly Found Stone Implements and Their Strata Associations

This worksheet is intended for your general reference and for comparative purposes only. See the textbook for associated ages and relative timelines for each represented type.

CLASS A



01/03/35
Found in Grid A
Check with
manuscript
for age
comparisons.

CLASS B



Specimen b.3 found
in Grid C 01/05/35

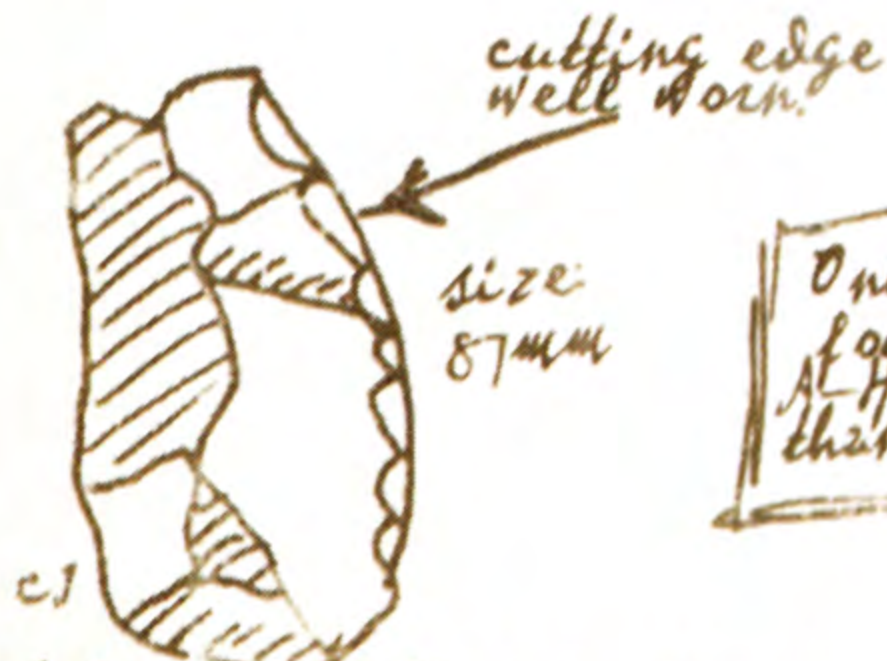
Depth: 3 meters

Associated material:

bone fragments (animal)
charcoal (cooking fire?)

note: no vessels at this level

CLASS C



Compare with grid K!

Only 2 single implement
found at level 6 in grids
A-H. Compositionally different
than the later tools.

Quiz students on this specimen

SUBCLASS 1

Note: Each class is further divided
by composition, structure, and use.
Refer to the Classification section.



Jan 10

Misplaced my Webley again. Maybe I left it in my desk. That's what I get for not using my holster. Read in the paper about Abner's recent discoveries in the north Orient. Seems like his obsession with religious antiquities is paying off. Which reminds me, Marcus wanted me to check out some of the recent finds of the early Manchu Dynasty. If I can shake off some of this academic responsibility I should head off to Shanghai. Made a few promises I gotta live up to. And a few bets too.



Jan 12

I've been spending more time than I'd like at the library. There must be a connection in Topkapi's treasury that links the Sultan to the grave robberies in North Africa. Certainly the fiance inlay on the dagger is from the Old Kingdom. I've had Marcus check related pieces in storage but he's found nothing. I had hoped to discover something during the Omega Expedition that would shed some light... I guess I'll be visiting Istanbul on my next ~~sabbatical~~ sabbatical. So much for Hawaii!

STEAMER LINES



I overheard a wireless message coming from the cabin next to mine.

FFSKART

TE KLASSE

SHIP TICK

IRD CLASS



RAILORDER
ISSUED

小心
德國
人

POS. 23-24
T 09633

europäischen Hafen.
European port.

INES

neten Reisenden (bei Familien
the UNITED STATES
gen worden.
dered the head of the family

36
17

men von
ll be provided from
in dritter Klasse des
in the third class of the

on NEW YORK
urther from

schiff — Eisenbahn (III. Klasse)
rail (Third Class)
ie folgt vereinbart
n agreed and paid as follows

für die Weiterbeförderung
for continuation of journey

TOURIST
\$
6047
\$ -

8.-

Gepäcktransport (abgesehen von
beyond this amount, nothing
europäischen Hafen nichts mehr
of his baggage (with the

am
on the *8/27*

ly Stmt. of Cash Sales.
ate
urrency



STEAMSHIP TICKET SCHIFFSKART
 Ticket for transportation to a non-European port

Der Fahrpreis
 The passage

After pressing the START button at the Title Screen, the Main Menu appears. Press the left analog stick or directional buttons to highlight your selection, and press the **X** button to confirm. Press the **△** button to exit a menu.

MAIN MENU

a	Surname Family name	Vornamen Given names	b
1	START	Select after loading a previously saved game or after choosing to begin a New Game.	
2	NEW GAME	Before you can start a new game, a session must be created so your progress can be saved. To create a session, enter a name from the alphabetical menu by navigating with the left analog stick and pressing the X button. Up to ten games can be saved.	
3	LOAD GAME	A list of previously saved games is available through this selection. Saved games may also be deleted from this screen. See page 28 for more information on loading.	
4	OPTIONS RAILORDER ISSUED No..... für Personen über 10 Jahre for Persons over 10 years für Kind von 1 bis 10 for Child from 1 to 10 für Kind unter 1 Jahr for Child under 1 year	To enhance your gameplay experience, you may want to adjust the following: Controls: You can reconfigure the controller with the provided presets, and turn the vibration function ON/OFF. Camera: You can reverse the vertical viewing direction for your first-person views, and the vertical and horizontal views for your third-person view. Audio: You may set the volume levels of the game's Music, Sound FX, and Voice. Display: You can turn the subtitles ON/OFF. Difficulty: There are three levels of difficulty: Easy, Medium, and Hard. These options alter your maximum Health Level and the strength of your enemies, and may provide a more challenging experience.	
5	ARTIFACTS	Find all the artifacts in the game to unlock a bonus.	
6	CREDITS	See the adventurers who brought you this incredible Indy experience!	

Follows the river

Northern Range

N

Est...

CLUB BOBBI WA



比佛利俱樂部

美國著名藝

Base camp

Feb 3

After almost a week of digging up...

精威利史考

Indy -
Check out this
place. Many
possibilities.



appearing nightly



隆重登場

每晚於澳

WILLIE SCOTT

Famous American Entertainer

... is only a century old.
The Kelsey Museum claims Terenouthis, a
Ptolemic/Roman site in Soknopaiou Nesos,
though it was MY research which located it!

RESEARCH



Feb 7

I've contacted the National Archeology College Association regarding Barnett's contributing budget for field work. Recent funding from the WPA has increased my overall expense margin, but the Board seems to think I'm more of a grave robber than a historian. Apparently, the Works Progress Administration specifies ~~very~~ rigid guidelines for "conservation archeology." At least the Museum knows I'm only interested in preserving and protecting antiquities from profit hunters.

Feb 8

Good news! Marcus wants me to help locate an artifact in Ceylon, and the campus Board of Directors is more than happy to send me on a sabbatical. Maybe I shouldn't have used Marcus' government connections to have FDR straighten out my budget dispute! I've cabled my friend at the Consulate for the inside scoop. I'll head out in search of the lost city of Anurapura and the Savarati Idol as soon as I hear back from him.

Feb 11

Albrecht Von Beck (?) is after the idol as well. This tip comes from a most unlikely source: Bellog! Though Bellog and I fiercely compete for the same artifacts, it appears the rivalry between Von Beck and Bellog is even greater!

Director of the Treasury
British Embassy/Ceylon



Prof. Jones
Barnett College
New York U. S.A



POST
LEFT
EAF



I was greeted with a traditional ceremony.
"Ayubowan" with
hands clasped



Feb 19
Studying
Savarati
morning
course on



Monetary System
is still in circulation?

WEATHER FORECAST

Showers probably tonight and Saturday; not much change in temperature.

The

SEVENTY-SIXTH YEAR—NO. 282

NEA Feature Serv

RUMORS OF LOST TOMB CAUSE SPECULATION

The First Emperor of China Is the Last To Be Found

Emperor Ch'in Shih-huang-ti unified the Empire of China by centralizing ruling power into an autocracy to govern the feudal communities in 246 B.C. Though Emperor Ch'in Shih-huang-ti was technically the ninth emperor to rule, he was the first to unify the seven states of China through agricultural and military reform. His name, "Shih" means "first," and "Huang" was the title of the previous three emperors, and Emperor Ch'in Shih-huang-ti has been considered the "First Emperor" since his self-proclamation. He created townships, built roads, standardized script writing and coinage, and unified economic and cultural exchange across the continent.

When he ascended the throne, Emperor Ch'in Shih-huang-ti began the construction of his tomb, in the tradition of all-powerful leaders of antiquity, and died in 210 B.C. while campaigning away from the Capital.

The tomb of the Emperor is widely known, and has been revered by locals for centuries; however the actual crypt or mausoleum of the Emperor himself has never been discovered, nor has a full-scale excavation been commissioned.

We interviewed Dr. Abner Ravenwood, an expert on Antiquities of the Orient, via cablegram over several days. Currently he is in Nepal working on personal research.

EUROPE

ITALIANS WILL START WAR BY YEAR'S END

Expect Campaign to Consume Four Years

Paris, Feb. 16—Great Britain has informed Italy that an invasion of Ethiopia will result in the collapse of the League of Nations and a resumption of the dangerous pre-war "balance of power" in Europe, authoritative sources said today.

London, Feb. 1.—Italy intends to attack Ethiopia on two fronts during the later part of the year and will be prepared for a four-year campaign, according to expert military opinion.

Information in the hands of the British military intelligence is that Italian military leaders themselves are preparing to

Is
EN
4

Lon
forma
Franc
inform
Summ
limita

Off
hande
power
betwe
The
anxio
naval
hopes
tions
summ

be po
to a m
this y
Th
Britis
to iss
ence
gathe
that

En

Tr

LOST TOMB

(continued from page 1)

Dr. Ravenwood, how do you explain the absence of a sarcophagus?
"There can be several reasons. Grave robbers. Animals. Or perhaps the Emperor is simply buried in some nondisclosed location to perplex his enemies."

What about treasure? Surely he was a man of great wealth. Since none has been found in his tomb, could treasure be buried with him in this secret location?

"Unlike the ancient Egyptians, the wealth of the Emperors of China generally remained in the palace or treasury for his successor. I doubt that anything of great monetary value would be found. Though artifacts invaluable to the scientific community may yet be uncovered. Palace records indicate that the Emperor commissioned hundreds of terra cotta statues from local artisans. An army to protect the dead perhaps? But I wax romantic. If the records are true, evidence of such a large assemblage would have turned up. A small statuette in the Chicago Museum is believed to be the model for its life-sized counterpart, but I don't believe the commission was ever completed."

What about treasure of religious value?

"You have been talking to my colleagues, haven't you? Yes, I have been seeking out artifacts that hold great religious significance. I find the study of ancient beliefs to be fascinating. But in the case of the Emperor, he was known as a reformer and a tyrant, but not a man particularly respectful to the gods."

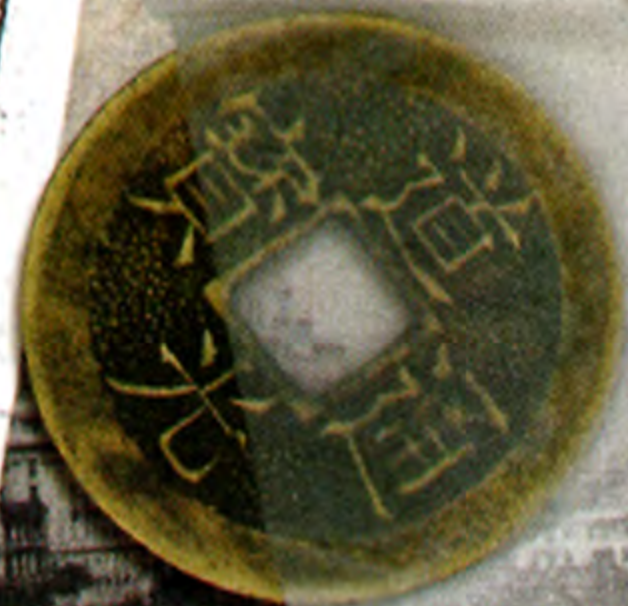
Do you think the Emperor will ever be found?

"It is unlikely that he can be found. Unless some record exists as to where he may have been buried, I fear the First Emperor of China will never rest, which is as it should be."

Dr. Ravenwood...
...archaeologist, is con-
...with Josephine Baker, who
...It is rumored that
...multilateral basis as ear-
...ar."

WEDNESDAY, FEBRUARY 20, 1935

MENT



The Bund or Water Front at Hong Kong, China

...evaded other polit-
...d said that plans to
...ite in a Republican
...today were "news to
...l to comment further.
...of the political leaders
...ecause they come to me
...ments," he said, adding
...led to spend the day
...a prominent publisher

...resident is en route from
...his California home.

When asked for his opinion about the current state of the U.S. economy, he politely declined to comment, saying

Cincinnati, O., Feb. 19
The Chief of Police, C
Department of Justice
and killed in a gun ba
night and his slayer,
resident, was wound
The gun battle occ
in his home, when
agents attempted
suspect automobi
The alleged thi
charged with mur
and was hospitali
though the injuries

Jan 14, 1935

Dr. Jones,

Outlined is the routine I've recommended for improving your mobility. Though you've not sustained any lasting injury from your last expedition, you seem to have a knack for getting punched in the face.

Take care of that whip arm as well.

Proper exercise is the best treatment I can offer, but I've also approved a prescription for minor muscle pain. Your diet could use improvement too.

Try eating dates.

A stiff belt of whiskey
... Don't hurt either!



Dr. B. Frodente
NY Medical Clinic (Poughkeepsie)
Plsnt Val-10-05

Dose	Quantity	Refill
2mg	30 count	No
Date:	01/14/35	

R/x: salicylic tannis benzadrine

Directions: Take daily in the morning or whenever pain is prevalent.

Doctor: B.M. Frodente

Feb 27

Doc says I need to participate in less strenuous digs. If he only knew! I'm still aching from that mishap near the Marquesas Islands. I think I'll avoid the water for awhile! Checked into my hotel in London. A cable from Dad was waiting. Though the impending war hasn't really affected home yet, he sounded pretty concerned about me ~~travelling~~ flying back and forth across European borders. A lot of ruckus in Ethiopia lately and the French control in Somalia is falling apart. It's just diverting attention from the real troublemakers though.

I've heard that Duke Ellington is playing in Paris



BASIC MOVES

01/14/35

Per your Doctor's recommendation, follow this routine daily.

All control descriptions use the default controller configuration. You can change the configuration at the Options Menu (see page 7).

WALK/RUN: Press the left analog stick gently to walk or hard to run in any direction.

JUMP: Press the Jump button (⊙ button) while standing, walking, or running. Note: Only your whip can be used while jumping.

CLIMB: You can climb low obstacles by pressing the left analog stick forward. Higher obstacles will require a jump. Press the left analog stick up while hanging to pull yourself up, or press the Jump button (⊙ button) to dismount from a hanging position. To climb certain vertical obstacles, look for ladders, vines, stone blocks or scaffolding. Approach the wall and press up on the left analog stick to climb. Pressing the ⊙ button before reaching the top will cause you to let go and drop.

ACTION: The Action button (△ button) can perform a variety of operations depending on the situation. These can include activating the appropriate inventory item, picking up an item, opening a door, lighting a torch and more.

COMBAT: Pressing the Primary Attack button (⊗ button) and Secondary Attack button (■ button) will make you punch/jab/kick, or utilize your weapon if one is equipped (see Combat Moves on page 20).

DRAW/HOLSTER WEAPON/LAST ITEM USED: Pressing the L2 button will draw or holster the last selected weapon (see Combat Moves on page 20) or item. Pressing this button will also access the last selected Inventory Item, or place an item in your satchel (see page 27).

RELOAD: Pressing the R2 button will reload any equipped gun with ammo from your inventory.

MOVE CAMERA: The right analog stick allows you to adjust the camera view at any time. Press the L1 button briefly to reposition the camera behind you.

LOOK: Holding the L1 button down will activate the first-person perspective Look Mode. While in Look Mode, move the left analog stick to change your viewing angle, which is very useful for aiming. While in Look Mode, you can also see your Status (see page 25).

from the offices of Dr. B. Frodent

anyone would do the same for fortune and glory. 15

Frei durch Dienstmarke!

SPECIAL MOVES

The Monarch Hotel, "Where the World Comes For Holiday," is proud to offer our full-service spa as part of your stay. In addition to tennis, golf and massage, we provide a wide range of invigorating activities:

SHIMMY: While hanging from a precipice, pressing the left analog stick left or right will make you shimmy along the edge. Pressing up will pull you back up (if possible). You can dismount by pressing the Jump button (○ button), but be careful you don't fall!

WALL HUG: Press the Action button (△ button) while facing a wall to hug your back to the wall. This is useful for traversing narrow ledges (by pressing the left analog stick) or to stealthily see around corners (by pressing the right analog stick) without exposing yourself to an enemy. Press the Action button (△ button) again to disengage from the wall. Note: If you are carrying your gun while Wall Hugging, you can lean around corners with the L1 and R1 buttons and shoot with the Primary Attack button (× button).

SWIM: Press the Jump button (○ button) to swim, and the left analog stick to control your direction. Remember, you can only hold your breath for a limited time. Watch your Air Bar and resurface, if you can, to get more air. A lack of air detracts from your Health Meter (see page 25). Don't drown! You can pull yourself out of the water by pressing up on the left analog stick only at an area that is close to the water level.

ROLL: Pressing the L1 button while running will perform a roll. The roll can be used to navigate through low spaces, and is useful in evading certain traps and enemy attacks.

Our full-service accommodations also include complimentary post and cablegram services, in-room telephones, nightly live music in our World-Famous Ballroom, a Smoking Room, and a Lounge Bar open twenty-four hours.



Should you require anything, simply utilize your room telephone and our ever-ready staff will immediately assist.

Enjoy your stay in London.

ROOM NO.

2005

Thank You!



Hierbei ein
Zustellung
Bereinfachte

Zugestellt am:

16 Someone knows I'm here. This German Police envelope was slipped under my door during the night. It's empty, but says "Wir haben das zweite Stück on the back. Are they ahead of us?"



GUEST LEISURE ACCOMMODATIONS

WHIP SWING: The whip is your most valuable tool. Not only can you crack it at an enemy (see Combat Moves on page 20), but you can also use it to swing across a chasm. You can swing from a wide variety of objects that extend from walls or ceilings. Not all whip swing anchors may look like this, but if you are able to perform a whip swing a Whip Swing Action Icon will appear in the upper-right corner of the screen (see page 24). Press and hold the Primary Attack button (X button) to grab the marker with your whip. If you release the Primary Attack button (X button) before you reach the bottom of your swing, you will fall. If you hang on too long and stop swinging, press the left analog stick in the appropriate directions to resume your swing. Furthermore, with good timing you can also swing from one target to another by releasing the Primary Attack button (X button) and quickly pressing the button again to strike another target.



ROPE SWING: If you encounter a rope or chain, press the Jump button (O button) to jump and grab on. To swing, press the left analog stick in the appropriate direction. Use the right analog stick to turn and face another direction. To climb the rope, press the right analog stick up or down. You can release the rope (don't fall!) by pressing the Jump button (O button) again.

SETTING A CHARGE: If you find a Demo Charge, you can strategically place it on destructible walls or floors by pressing the Action button (Delta button) and running to a safe distance before the fuse runs out. An icon of a bomb will appear in the upper-right corner of the screen if you are near an area that can be affected by a Demo Charge (see page 24).

A note on falling: If you hold down the R1 button while carefully walking off a precipice, you will automatically catch the edge. This technique allows you to safely lower yourself from dangerous heights. Otherwise, you will sustain varying damage from a fall. If you fall too far, you will surely die (see Health Meter on page 25). However, you will not be hurt if you fall into water, unless from a great height.

Visit Our World-Famous Sun Lounge and Ballroom

THE MONARCH HOTEL LONDON

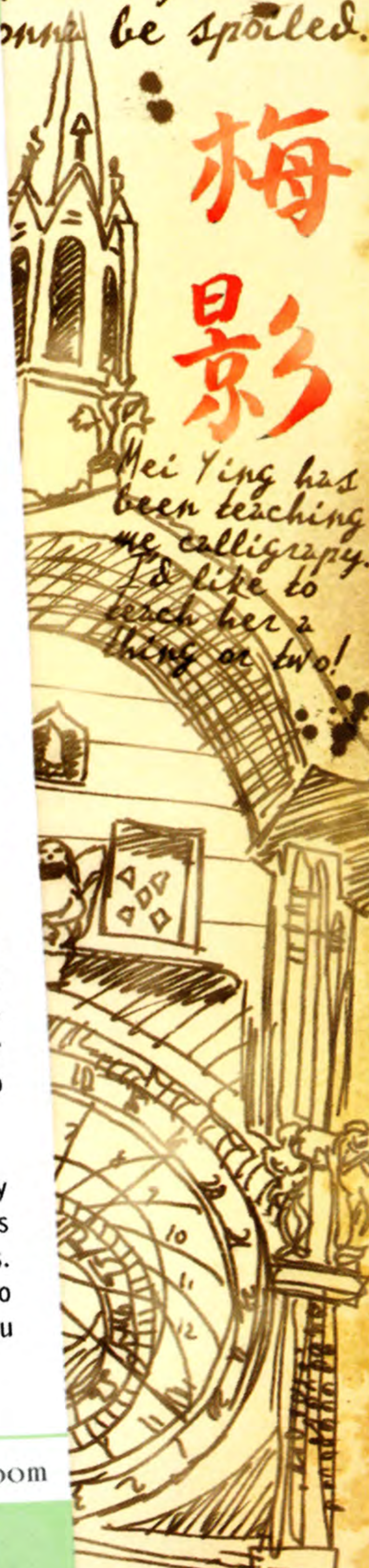


LONDON

Mar 1
I've arranged this hotel. Swanky!
must really think I can help
journey. I'm
must be spoiled.

梅
景
影

Mei Ying has
been teaching
me calligraphy.
I'd like to
teach her a
thing or two!



VIA ZEPPELIN
FRIEDRICHSHAFEN



Remstal-post

im NS-Zeitungsverlag
Gmünd / Postfach



Herr A.VB.
Post B21 Ceskoslovensko
Prag



乙 1022
中華民國國有鐵路
特別快車
天津東
至
北平
頭等
法幣 922元
乙
頭等
天津東至北平
1022
HANKOW TO SIAN RAIL

...with the excavated ruins. If

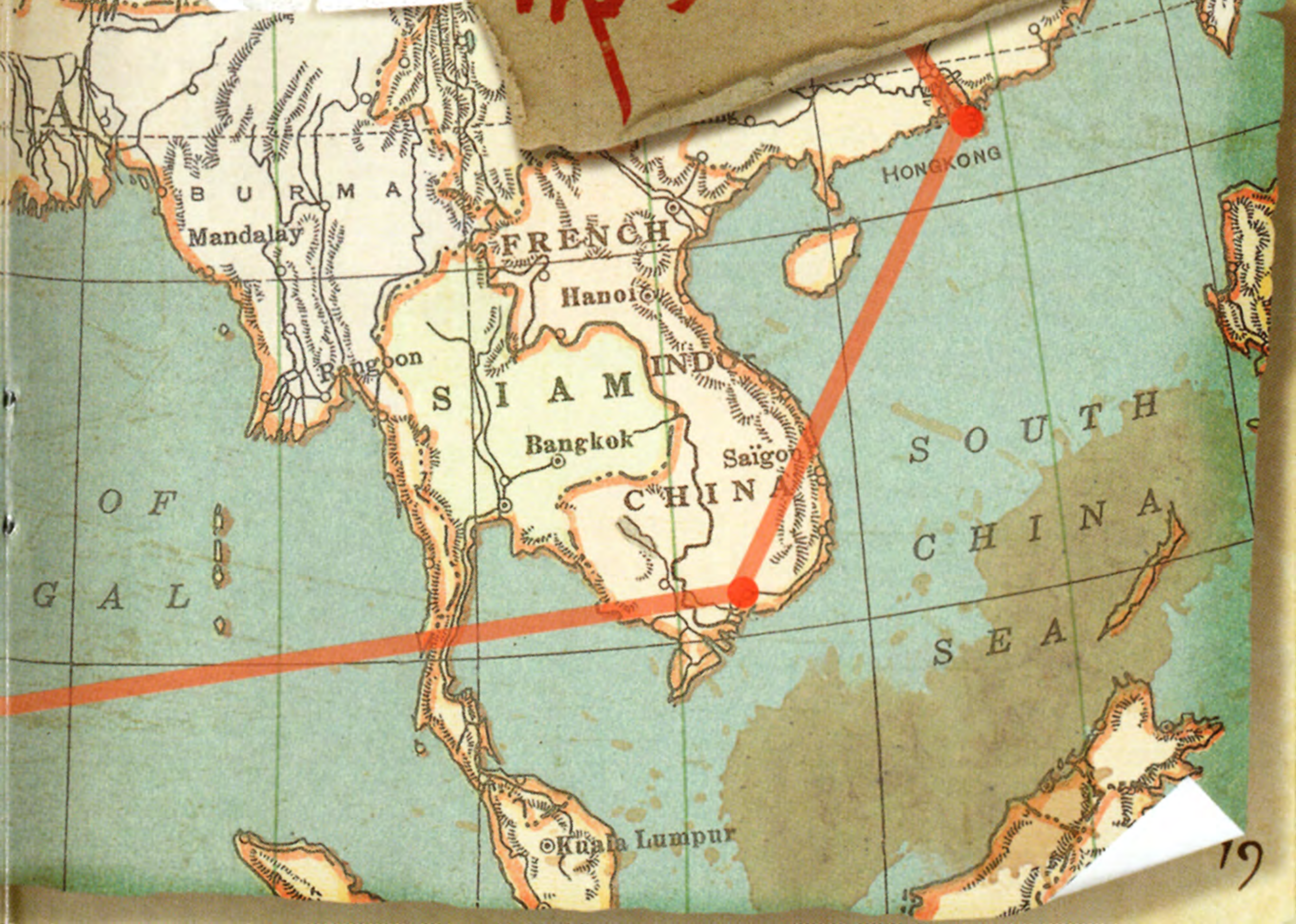


a	· -	n	· · -
b	- · · ·	o	- - - -
c	- · - ·	p	· - - ·
d	- · - ·	q	- - - ·
e	·	r	· · - ·
f	· - - ·	s	· · ·
g	- - ·	t	-
h	· · · ·	u	· · -
i	· ·	v	· · · ·
j	- - - -	w	· - - -
k	- · -	x	- · · · -
l	· - · ·	y	- · - - ·
m	- -	z	- · · · ·

DEVELOPED BY SAMUEL F.B. MORSE



帝王之墓



FIELD MANUAL

SKILL LEVEL THREE

COMBAT MOVES

KNOW YOUR ENEMY

You will fight your enemies in either Close Combat or Ranged Combat.

Close Combat is bare-knuckled, no-holds-barred fighting involving hand-to-hand moves, your whip, and improvised weapons.

Ranged Combat is useful in situations where long-range firepower is more effective than bare-fisted brawling, and involves a variety of guns from your trusty pistol to enemy machine guns.

When in doubt, whip 'em!

CLOSE COMBAT

Hand-to-hand attacks can range from punches, jabs, elbow smashes, kicks, knee smashes, head-butts, shoulder throws and more, depending on which buttons you press and your position to the enemy.

To punch, press the Primary Attack button (⊗ button) or the Secondary Attack button (◼ button), which correspond to your right and left fists. These buttons may also kick an enemy if the enemy is down in front of you. Use the left analog stick to control the direction of your attacks.

To grab an enemy, press the Primary Attack button (⊗ button) and Secondary Attack button (◼ button) simultaneously.

Study the examples shown at right.

FIG. 1



Nazi
1.0 the Year: 1919
Junior, though I don't approve of violence (or your methods in general), this guide from my training days in the volunteer corps may prove handy should you run into trouble again. Your father

12.21.3.1.19 — 1

WASHINGTON D.C.

Example punches:

Most Punch Combinations can be achieved with only three button actions. If your enemy is down, you will perform Kick Combinations as well.

■ button - ■ button - ■ button
(basic triple-left combination)

⊗ button - ⊗ button - ⊗ button
(basic triple-right combination)

Example grabs:

Once you have grabbed an enemy, you can perform special grapple punches or knee attacks by pressing the Primary Attack button (⊗ button) and Secondary Attack button (■ button). You can also throw an enemy that has been grabbed by pressing the left analog stick in any direction. Grabbing an enemy from behind performs an especially powerful head-lock grapple.

⊗ button + ■ button (grab),
then ⊗ button - ⊗ button (knee attack),
then left analog stick (throw enemy)

Example combos:

In addition to the combinations above, alternately pressing the Primary Attack button (⊗ button) and Secondary Attack button (■ button) will perform more advanced (and devastating) combinations. Furthermore, pressing the left analog stick in varying directions while tapping out any of the button combos will result in different attacks.

⊗ button - ■ button - ⊗ button
■ button - ⊗ button - ■ button

FIG. 2



FIG. 3



FIG. 4



FIG. 5



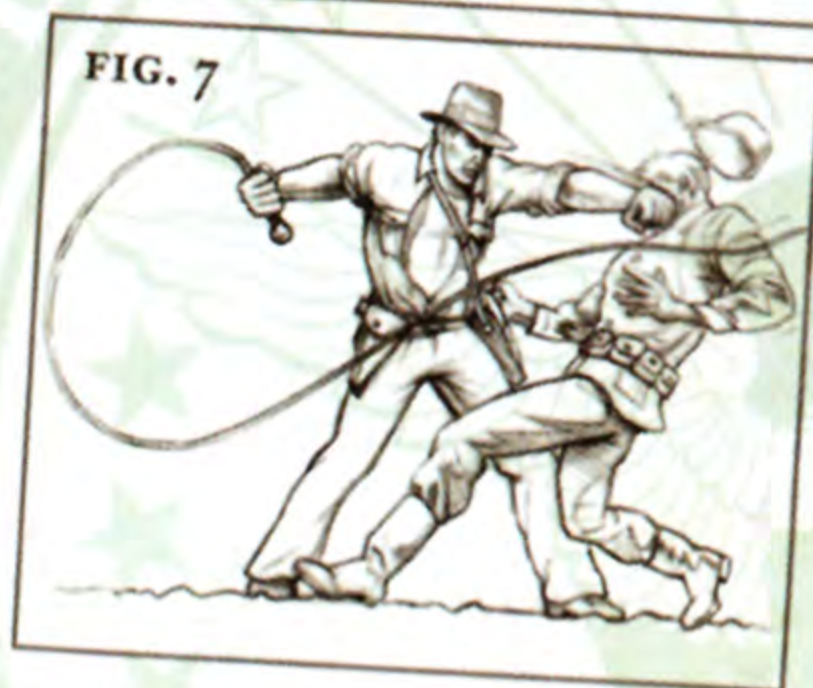
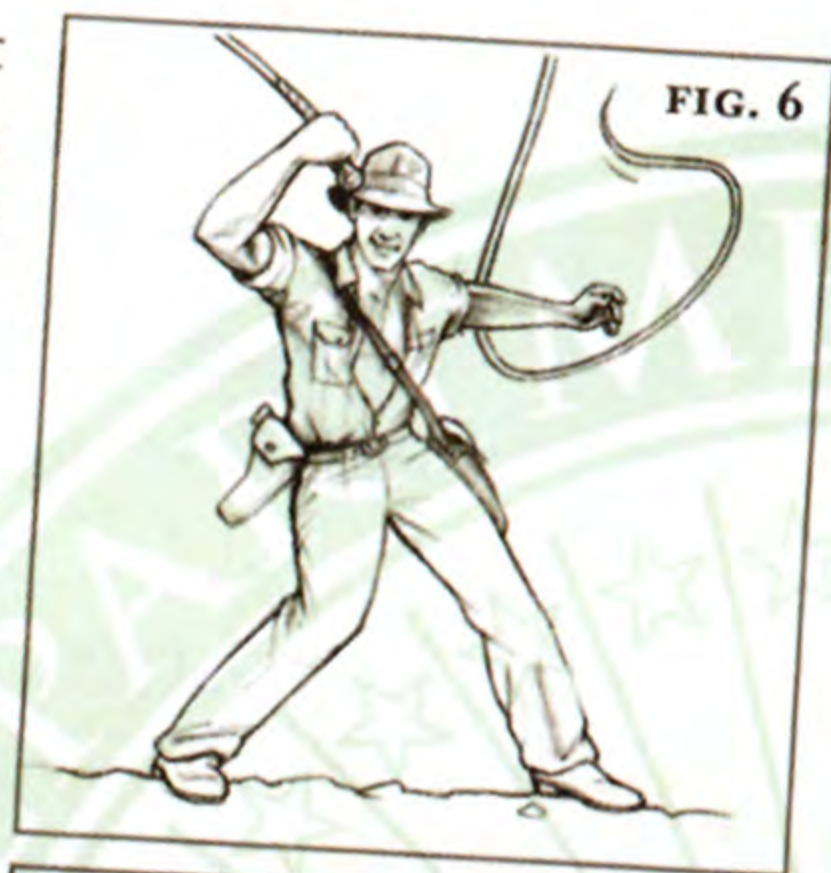
KEEP THIS AND OTHER TACTICAL DOCUMENTS CONFIDENTIAL FOR YOUR SAFETY AND THE PROTECTION OF YOUR COUNTRY.

Even
and
heUAL
LEVEL THREE

COMBAT MOVES

Your Close Combat weapons include your whip and a wide selection of improvised weapons you can pick up from the environment and wield for a limited time. Close Combat weapon attacks are performed with the Primary Attack button (⊗ button) and Secondary Attack button (◼ button).

The Whip: To use the whip effectively in combat requires skill and practice, because the whip is not a particularly fast weapon. However, its ability to drive enemies backwards and its variety of special attacks makes the whip a versatile and stinging weapon. Pressing the Secondary Attack button (◼ button) will crack the whip, and is effective in pushing back multiple enemies. Pressing the Primary Attack button (⊗ button) quickly may perform a quick overhead strike that will knock a weapon out of your enemy's hand. Note: If you disarm an enemy, sometimes you can pick up and use his weapon. Be careful, however, as other enemies can do the same thing and use the fallen weapon against you. Pressing and holding the Primary Attack button (⊗ button) may wrap the whip around an enemy's neck and pull him towards you automatically for a powerful combination punch.



Machete: Use the machete to hack your way through vine-covered passageways, or cut some ropes.

Improvised Weapons: You can use items in your environment as improvised weapons, such as a shovel, bottle, chair or even a table leg (if the table is broken first). Some improvised weapons can be used to parry blows, while others can only be thrown at an enemy. Unlike your whip, some improvised weapons may only be used a few times before they break! To pick up an improvised weapon, press the Action button (⬆ button). Use the Primary Attack button (⊗ button) to wield the object. Some objects (like bottles) can be thrown by pressing the Primary Attack (⊗) button. Pressing the L2 button or selecting a new weapon will make you drop the improvised weapon.

Grenades: Grenades will explode several seconds after you press the Primary Attack button (⊗ button). Make sure that you are out of range of the explosion!

Mar 9
rusting Kai.
between him



19.16.9.5.12.2.5.18.7
WASHINGTON D.C.

Throw Meter: If you pick up certain throwable objects, like grenades, press the Primary Attack button (⊗ button) to make a Throw Meter appear on screen. As the Throw Meter rises and falls, release the Primary Attack button (⊗ button) to throw the object at different strengths.

Blocking (Guard Mode): To block Close Combat attacks, hold down the R1 button and enter Guard Mode. You will automatically face your nearest enemy. You can block any frontal attacks but you cannot block attacks that come directly from behind, so position yourself to protect your back when combating multiple enemies. While in Guard Mode, holding down the Jump button (⊙ button) and pressing the left analog stick will allow you to quickly execute special evasive moves: dash left/right, or dash back/forward. Pressing the L1 button executes a forward somersault.



Trap Mode: Occasionally, when confronted with dangerous traps, you will automatically enter Trap Mode. While in Trap Mode, pressing the left analog stick will execute quick evasive dashes, but you cannot change the direction you are facing.

RANGED COMBAT

Your primary Ranged Combat weapons are your pistol and whip. Unlike the whip, guns only utilize the Primary Attack button (⊗ button). Pressing the Secondary Attack button (⊙ button) will bash your opponent (if they are close enough) with the butt of your pistol. For weapons that fire, holding down the L1 button will initiate the Look Mode and an aiming cross hair appears (see page 15). Holding down the R1 button enables you to lock onto one target, increasing your accuracy. As you select or fire your weapon, your Ammunition Status appears in the lower right portion of the screen. The ammunition is shown in two counters. The first indicates the number of shots you can fire before reloading, and the second indicates the number of rounds remaining in your inventory. You can reload your weapon at any time by pressing the R2 button.

trust your instincts!

This introductory course to antiquarian research covers basic field methods and the interpretation of material evidence from the excavations of historical sites; with emphasis on strata association (sequencing and seriation techniques) and the prevention of site contamination. Excavation is inherently destructive; therefore the history of excavation methodology and the ethics of disturbing sites of cultural significance will also be examined. This is a hands-on course, and requires each student to become familiar with the following in order to properly interact with the curriculum:

ACTION ICONS

The Action Icons are informative graphics that appear in the top-right corner of the screen when a special action can be performed. These Icons can provide valuable hints if you are uncertain about what to do.



Whip
Swing



Fill
Canteen



Cut
Item



Lever/
Interactive



Pick Up
Object



Level
End



Push



Zip
Line



Demo
Charge

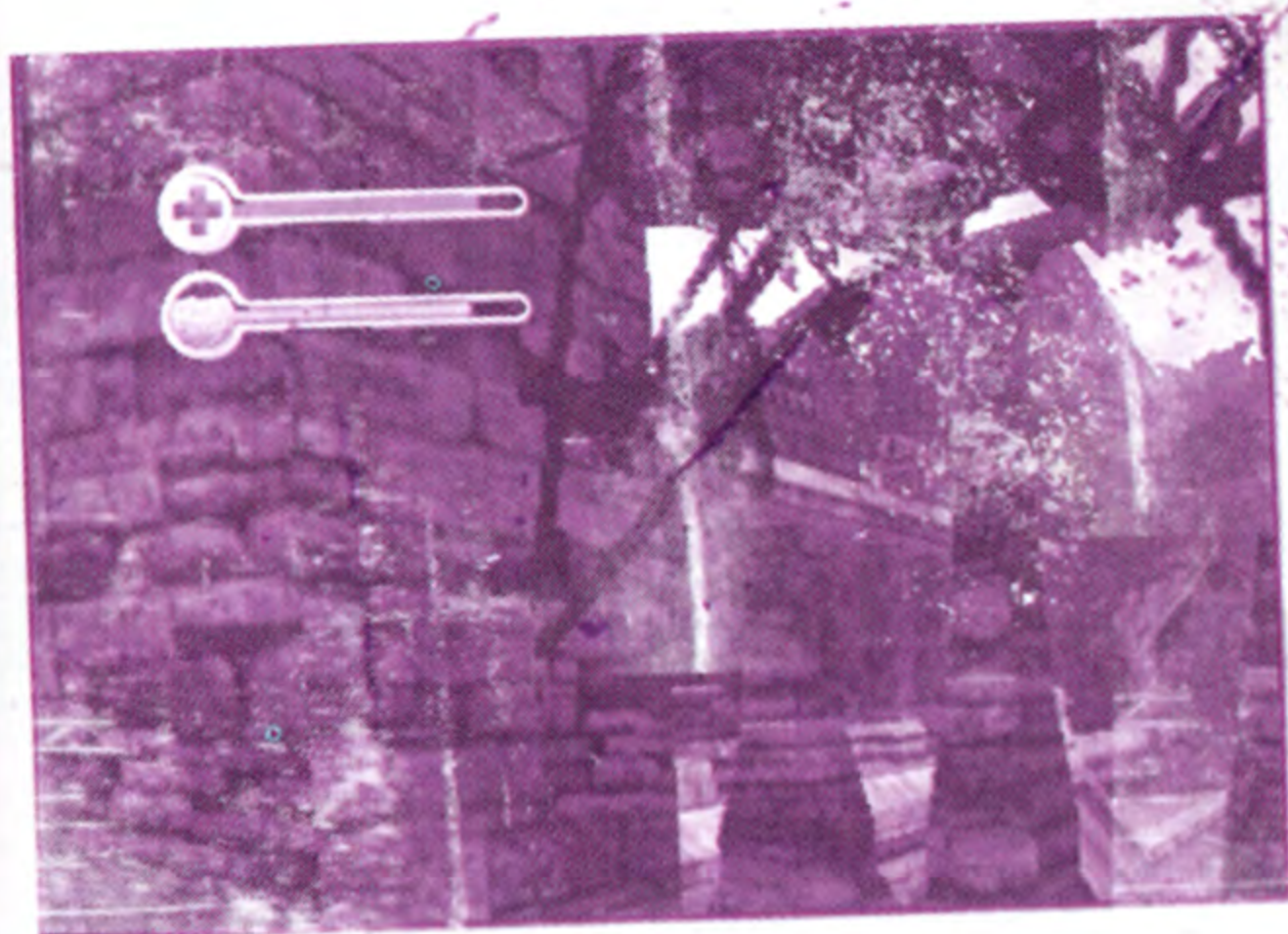


Look



Operate
Crane

Jan 07, 1935



STATUS

Your Status appears whenever you are in Look Mode (press and hold the L1 button).

HEALTH METER: Your Health Meter ranges from green to red and reflects your current condition. Each time you receive damage (from a punch, pistol shot, fall or drowning), the Health Meter appears momentarily on screen. Watch yourself; as you become hurt, you will slump forward from exhaustion. Once your health drops below 20 percent, the Health Meter will remain on the screen. Once your Health Meter reaches zero, the game is over.

WATER METER: You need water to survive on your adventures. As you drink water, your Health Meter increases proportionately. You drink water from your canteen and refill it at the fountains found throughout the level (see Inventory on page 27).

figurine, First Dynasty.
Found in Sian, not
much patina.

about 150 cm high,
bronze. Kneeling
warrior, possibly
holding a wooden
staff (missing).
Lost wax casting

what does the
right arm
gesture mean?

recursor to the one
the Chicago Museum

MEMO:

"He shall not bind his soul with clay."—Alfred T. Tennyson (1809-1892)

INDIANA.

Because the condition of the Savarati Idol was, shall we say, LESS than satisfactory, our exhibit on religious idolatry is being postponed, much to the disruption of the Museum's operating budget. I'm not giving up, however. The Museum has yet another relic it would like recovered in time for a special exhibit on the South American Chachapoyan Warriors, opening early next year. We have begun preliminary research and hope to locate the temple which we believe may contain a 2,000-year-old golden idol. Not much is known about the site; only that we are in competition with several other museums and collectors, which may add a modicum of danger to the expedition. This is YOUR area of expertise, and your chance to show the Museum that you are still our most profitable "expert of Antiquarian Acquisition."

Thanks again, Indy, and better luck next time.

Marcus



NATIONAL MUSEUM

FOR OFFICE USE ONLY. DO NOT WRITE IN THIS AREA.

much free time in the field
26 some polished ritual stone



All materials issued are property of Barnett College and cannot be obtained without a signed expense voucher issued by your department, and all requests must be approved by the supplies coordinator before materials can be released.

DEPARTMENT NATURAL SCIENCES

DATE 07/12/35

COURSE ARCHEOLOGY 101

PURPOSE

PROFESSOR JONES, H. JR.

FIELD SUPPLIES FOR
ON-SITE RESEARCH
(SEE ATTACHED)

SEMESTER FALL '35

DEPT. APPROVAL Dr. Snedley

MATERIALS

INVENTORY

The inventory in your Mark VII satchel changes as you acquire new items during gameplay. Your standard kit contains your whip, pistol, and canteen. To scroll through your inventory, press the directional buttons ← or →, and press the directional buttons ↑ to select, or press the directional buttons ↓ to deselect.



✓ **WEAPONS:** Your whip, pistol, and other weapons are explained on page 22.

✓ **CANTEEN:** The canteen restores your health by refreshing you with water. The canteen holds enough water to restore your health from 0-100 percent. You can drink water at any time by selecting it from your inventory and holding down the Primary Attack button (X button) until you reach the level you desire or until your canteen is empty. The canteen can be refilled at fountains found throughout the levels. To refill your canteen, stand at a fountain and hold down the Action button (A button). It's a good idea to fill your canteen at every opportunity.



✓ **MAP:** If you should find a map, you can view it by selecting it from your inventory.

PLEASE NOTE: DUE TO NEW POLICY, AMMUNITION CAN NO LONGER BE SUPPLIED BY THIS INSTITUTION.

SPECIAL ITEM REQUESTS

Book: "Poisons, Antidotes, and Other Medical Theories" by Addison.
Khyber Bowie Sword

Textbook: "Learning to Fly: An Introduction to Private Aviation"

*Jones -
I'm approving this voucher for the above items only! The college will NOT replace another Webley! Snedley*

Washington D.C. Oct 7 1935

5-3
5

Clare

& that rickshaw
rough the city was



SAVING AND LOADING

SAVE GAME: Your game is automatically saved at various points as you progress through a level.

If you should die during the game, you will be presented with two options: Continue from last Save Point or Quit to Main Menu.

LOAD GAME: To load a game while a game is in progress, you must first quit the game in progress, after which you will be returned to the Title Screen.

NOTE: Indiana Jones and the Emperor's Tomb supports the memory card (8MB) (for PlayStation®2) in MEMORY CARD slot 1 if you wish to save your progress. You must have at least 156KB of memory available on your memory card to save your progress.

number of snakes. No wonder it's part of their

culture. 1

sculpture,

H. Jorges

pass. n. 13666

CONSULAT ROYAL d'ÉGYPTÉ
à PARIS

Visa ^{d'entrée}

8 FEV. 1935

No. 406

Date

Durée de validité douze mois

~~pour un seul voyage~~

Validité pour tous les voyages effectués pendant la durée de la validité

Droits perçus f 70

TOURISTE

Le Consul

H. H. Neumeier



and I must translate this when I have time.

THE COMPANY WILL APPRECIATE SUGGESTIONS

Ship Radiogram

EXPR CA

OF SERVICE

full-rate Telegram or Cablegram unless its character is indicated by a suitable sign preceding the address.

I.M. WELTHIE
PRESIDENT

JUSTIN
CHAIRMAN OF

ing time shown in the date line on telegrams and day letters is Standard Time
ived at 5 K S 9 NY

DIANA JONES, BARNETT COLLEGE, NEW YORK

HOW TO CONTACT LUCASARTS
NEED HELP? WE HAVE TOP MEN WORKING ON IT.

LUCASARTS CAN PROVIDE YOU WITH INFORMATION ABOUT OUR LATEST GAMES, HINT AND GAMEPLAY ASSISTANCE, AND TECHNICAL SUPPORT.

HINT LINE (U.S.)

1-900-740-JEDI (5334). YOU MUST BE 18 YRS OLD OR HAVE PARENT'S PERMISSION. REQUIRES A TOUCHTONE PHONE. COSTS \$1.99 PER MINUTE. TO TALK TO A LIVE OPERATOR, CALL DURING REGULAR BUSINESS HOURS (9:00 A.M. TO 6:00 P.M. PST). AVERAGE CALL LENGTH IS 3 MINUTES.

HINT LINE (CANADA)

1-900-677-JEDI (5334). YOU MUST BE 18 YRS OLD OR HAVE PARENT'S PERMISSION. REQUIRES A TOUCHTONE PHONE. COSTS \$1.25 (U.S.) PER MINUTE. TO TALK TO A LIVE OPERATOR, CALL DURING REGULAR BUSINESS HOURS (9:00 A.M. TO 6:00 P.M. PST). AVERAGE CALL LENGTH IS 3 MINUTES.

THE QUICKEST, SUREST AND SAFEST WAY TO

*Why do British archeologists always look
30 like they're on a safari? I'll take a fedora over*



a with helmet any day! I should know better than

FROM ITS PATRONS CONCERNING ITS SERVICE

but

ESS
BLE

SIGNS
DL = Day Letter
NM = Night Message
NL = Night Letter
LC = Deferred Cable
NLT = Cable Night Letter

CASE
THE BOARD

M. N. CHARGE
FIRST VICE-PRESIDENT

FORM 1935-A

at point of origin. Time of receipt is Standard Time at point of destination.

FIND US ONLINE

support.lucasarts.com

YOU CAN RECEIVE ONLINE TECH SUPPORT THROUGH YODA'S HELP DESK (AN INTERACTIVE, 24 HR/7 DAY KNOWLEDGE BASE), BROWSE TECHNICAL DOCUMENTS, OR LEAVE A MESSAGE FOR AN ONLINE REPRESENTATIVE.

TECHNICAL SUPPORT PHONE NUMBER

1-415-507-4545 FOR TECHNICAL ASSISTANCE ONLY (NO HINTS). WE ARE ABLE TO HELP YOU MONDAY-FRIDAY 9:00 A.M. to 6:00 P.M. PST.

TECHNICAL SUPPORT FAX NUMBER

1-415-507-0300 TO FAX YOUR TECHNICAL QUESTIONS. INCLUDE YOUR NAME, RETURN FAX NUMBER AND AREA CODE, AND A VOICE PHONE NUMBER (IN CASE WE EXPERIENCE ANY PROBLEMS IN FAXING YOU BACK).

TECHNICAL SUPPORT MAILING ADDRESS

LUCASARTS, A DIVISION OF LUCASFILM ENTERTAINMENT COMPANY LTD.

P.O. BOX 10307, SAN RAFAEL, CA 94912

ATTN: PRODUCT SUPPORT

SEND MONEY IS BY TELEGRAPH OR CABLE

PAT. NOV. 3, 1912
MARSH ENVELOPE CO.

flying

none other than Amelia Earhart!

Sept 5

I couldn't have gotten through this without help from a lot of people— Special thanks to Marcus, my Father, Barnett College, and the National Museum. Oh, and George and Steven too. And all those to whom I owe credit:

The Collective

PROJECT DIRECTORS

VP Production
Douglas Hare

Creative Director, VP
Richard Hare

VP Development
Gary Priest

PROJECT LEADS

Lead Artist
Brian Horton

Lead Designer
Brad Santos

Lead Programmer
Robert Mobbs

Lead Engine Programmer
Nathan Hunt

Lead Tools Programmer
Jason King

Lead PS2 Programmer
William Chen

Producer
Rick Watters

PROJECT TEAM

Technology
Brian Belfield
Kevin Christensen
Patrick Cyr
Emil Dotchevski
Rachid El Guerrab
Paul Im
Michel de Messieres
Yann Robert

Mike Singleton
Eubank Wang
Jun Zhang

Additional Technology
Brett Cook
Adam Croston
Marc McCall

Level Design
David Kelvin
Nick Parde
Trey Turner

Additional Level Design
Tony Giovannini
Trent Martinez
Richard Starr

Character Design/Scripting
Fred Corchero

Additional Character
Design/Scripting
DJAMES
Dave Winstead

Environment Art
David Robert Donatucci

Animation
Paul Belmore
Paul 'Grim' Lee
David Nilsen

Additional Animation
Roberta Browne

Modelers
Greg Baldwin
Allen Kerry
James Ma

Storyboards
Hong Ly

Engine Technology
Rachid El Guerrab
Mike Singleton
Andi Smithers

Additional Engine
Technology
Boris Batkin

Additional Tools
Technology
Lee Cooper

Sound Designer
Steven von Kampen

IT Support
Daniel Salzedo

Human Resources
Kelly Krumpitsch

Administrative Support
Shelley Champion
Susan Horton

Production Testing
Brian Zenns

Nikitova LLC-
Cinematics, Modeling
Olya Nikitova
Andrei Pozolotin
Sergey Golubchuk, Lead
Roman Dzuba
Vyacheslav Kondrashov
Alexey Manita

AtGames-
Cinematics, Modeling
Michael Gates, Lead
Jackie Liu, Lead
Mandy Cheng
Merlin Cheng
Andy Liu
Shark Liu

LucasArts Entertainment Company

Producer
Jim Tso

Assistant Producer
Nate Schaumberg

Level Design
John Drake
Quentin Wescott
Matt McManus

Story/Dialog Consultants
Michael Stemmler
Justin Lambros

QA Testers
Hugh 'BOBO' Moore, Lead
Roger Romero, Asst. Lead
Bryan Finoki, Asst. Lead
Bertrand Estrellado
Bob McGehee
Eric Knudson
Jeffrey Gullett
John Lowenthal

QA Testers (cont.)
Scott Taylor
Tim Temmerman
Jonny Rice
Erik Rauch

Manager of International
Production
Darren Hedges

International Producer
Karen Finch

International Testers
Erik O'Keady, lead
Mark Montuya
Matt Chang

Lead Sound Designer
Nick Peck

Sound Assistant
Andrew Cheney

Music Composer
Clint Bajakian

Voice Director/Producer
Darragh O'Farrell

Lead Voice Editor
Cindy Wong

Voice Editor
Will Beckman

Assistant Voice Editor
Burke Pemberton

Voice & International
Dept. Coordinator
Jennifer Sloan

"The Raiders March" From the
motion picture RAIDERS OF THE
LOST ARK Written by John Williams.
Published by Bantha Music (BMI)
and administered by Ensign Music
Corporation throughout the world.

Voice Credits

Indy David Esch	Homonculus, Triad Ghoul Kevin Michael Richardson	
Mei Ying Vivian Wu	SS Soldier 2 Jim Ward	
Marshall Kai, Ch'in Shi-Huang-ti Keone Young	German PA Announcer, Ivory Hunter (Russian) Phil Proctor	
Von Beck, Ivory Hunter (South African) Nick Jameson	Triad Grunt 1, Triad Grunt 2, Waiter Arthur Eng	Gestapo Agent 1, SS Colonel Torsten Voges
Richter, SS Soldier 3 Kai Wulff	SS Soldier 1 Herbert Primig	Gestapo Agent 2, SS Officer Matt Lindquist
Feng Twin 1, Feng Twin 2 Jennifer Yen	Turkish Mercenary Kerem Hanci	Thanks to George Cheung Brooks Gardner
Wu Han Alan Drevin	Palace Guard Lei Yin	



Voices Recorded at
Screenmusic Studios

Engineers
Ernie Sheesly
Gordon Suffield
Arnold Geher

Assistant Engineers
Eric Lewis
Lisa Carlon
Crystal Wright

Chicago Recording
Company Engineer
Michael Mason

Assistant Engineer
Danny Karabaic

Lucasfilm Licensing
Stacy Cheregotis
Amanda Burns
Chris Gollaher
Kristi Kaufman

Content Coordinator
Justin Lambros

Director of Marketing
Liz Allen

Product Marketing Manager
Sam Saliba

Public Relations
Tom Sarris
Heather Twist Phillips
Alexis Mervin

Sales and Channel Marketing
Meredith Cahill
Alyx Huynh
Greg Robles
Katy Walden
Mike Maguire
Tim Moore

Internet Marketing
Jim Passalacqua
Melissa Federoff
Tony Dewese

Creative Services
Patty Hill
Cassia Dominguez

Manual Writing, Art and Design
Gregory Harsh, Beeline Group

Manual Editors
Mollie Boero
Brett Rector

Packaging
Drew Struzan, Illustration
Hamagami/Carroll & Associates,
Design

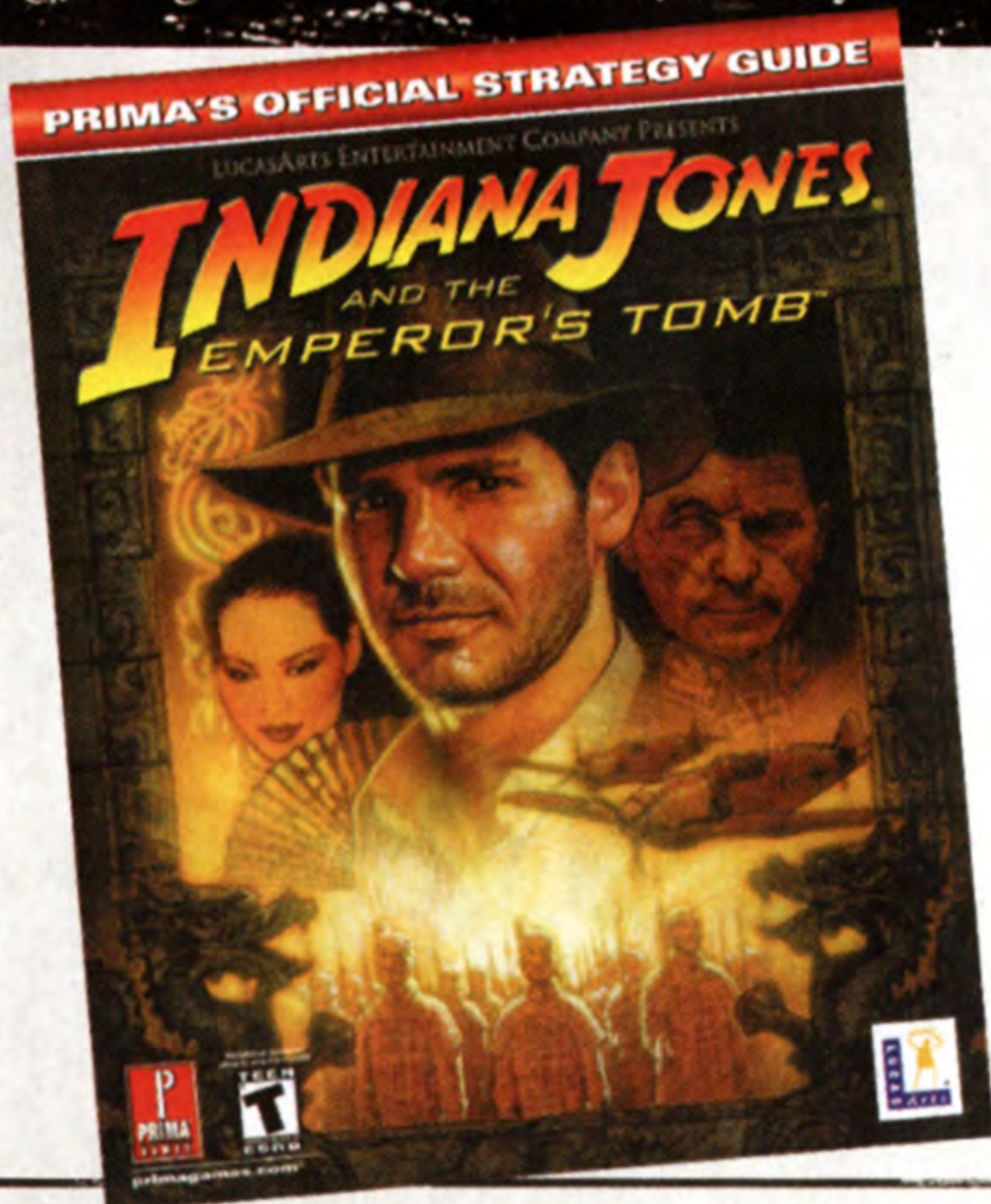
Product Support Supervisor
Jay Geraci

CD Burning Goddesses
Kellie Walker
Wendy Kaplan

Very Special Thanks
George Lucas

Visit the Wondrous LucasArts Company

Be among the legions of fans who enjoy safe, quick and convenient shopping at store.lucasarts.com. You will find more information on exclusive items and great gaming deals—all with our money-back guarantee. (See our Web site for details.)



Indiana Jones® and the Emperor's Tomb™ Strategy Guide for the PlayStation® 2!

As you search for the Heart of the Dragon artifact, this guide will provide you with solutions to finding all three pieces of the Dragon Seal key, detailed walkthroughs of all 10 levels, puzzle solutions and combat tactics for defeating your enemies.

128 pages.

\$14.95

LucasArts Company Store Exclusive Items!



LucasArts Montage Shirt

From Elaine to Grim, Indy to Nym—the familiar faces of LucasArts games spanning the past twenty years come together in this eclectic montage. Long sleeve shirt, 100-percent cotton, natural color. Adult sizes.

M–XL \$18.95 XXL \$21.95



Indiana Jones® Boxer Shorts

Ever wonder what Indy wears when he's not spanning the globe in search of precious antiquities? We don't know either, but we're sure he sports boxers underneath it all! These one-of-a-kind, all-cotton shorts are tastefully decorated with Indy icons, and come with an elastic waistband and faux fly for unisex comfort. Adult sizes.

M–XXL \$16.95

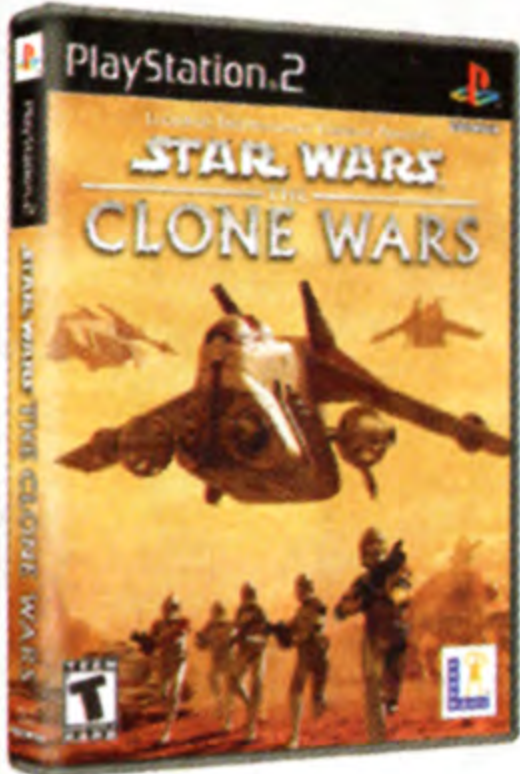
Offers valid through 10/31/03. Prices may change at any time.

Store *Just off the Internet Highway*

AVAILABLE NOW FOR THE PLAYSTATION®2 COMPUTER ENTERTAINMENT SYSTEM!

Star Wars Bounty Hunter™

The hunt begins! You play as Jango Fett, the most dangerous bounty hunter around, through 18 levels of non-stop action. Armed with dual blasters, a missile-equipped jetpack and more, you'll face off against galactic scum and frightful beasts as you pursue your prey—a deranged dark Jedi. **\$49.95**



Star Wars®: The Clone Wars™

You are thrust into the heat of battle in the galaxy's most unforgettable conflict. Lead the Republic army in the greatest battles of the epic Clone Wars as Anakin Skywalker, Mace Windu and Obi-Wan Kenobi. Your directive: stop the Separatists from reassembling an ancient Sith weapon of mass annihilation. You can also battle for survival with up to four players in a variety of multiplayer games. **\$39.95**



Violence

COMING SOON TO THE PLAYSTATION®2 COMPUTER ENTERTAINMENT SYSTEM!



RTX Red Rock™

2103. Brutal alien invaders have captured our colony on Mars and threaten Earth. You are E.Z. Wheeler, Army major, astronaut and trained Radical Tactics Expert. Plunge into battle on the Red Planet armed with deadly alien weapons and your own superpowers. Control robots. Drive rovers. It's the ultimate adventure on man's farthest frontier.



Blood
Mild Language
Suggestive Themes
Violence

What? No snake repellent?

To order, visit our Web site or call us toll-free! **1-888-532-4263**
Operators are available Monday through Friday, 7 a.m. to 6 p.m. PST.
(Orders only. Product support not available at this number.)

Please visit store.lucasarts.com for pricing and latest availability info.

Number
C010373

INCORPORATED UNDER THE LAWS
AMERICAN

IMPROPER CONDUCT WITH THE
This Certifies that

SOFTWARE LICENSE

PLEASE READ THIS LICENSE CAREFULLY BEFORE INSTALLING OR USING THE SOFTWARE. BY USING THE SOFTWARE, YOU ARE AGREEING TO BE BOUND BY THE TERMS OF THIS LICENSE. IF YOU DO NOT AGREE TO THE TERMS OF THIS LICENSE, DO NOT INSTALL OR USE THE SOFTWARE, DELETE THE SOFTWARE AND ALL RELATED FILES, AND PROMPTLY RETURN THIS PACKAGE AND ITS CONTENTS TO THE PLACE OF PURCHASE FOR A REFUND OR EXCHANGE SUBJECT TO THE RETURN POLICY OF THE RETAILER.

The computer software, artwork, music, and other components included in this product, as such may be updated (collectively referred to as the "Software"), are the copyrighted property of LucasArts Entertainment Company LLC and/or its parent company, affiliated entities, and its licensors (collectively referred to as "LEC"). The Software is licensed (not sold) to you, and LEC owns and/or controls all copyright, trade secret, patent and other proprietary rights in the Software. You may use the Software only in connection with a Sony PlayStation 2 computer entertainment system. You may not: (1) copy (other than once for back-up purposes), distribute, rent, lease or sublicense all or any portion of the Software; (2) modify or prepare derivative works of the Software; (3) transmit the Software over a network, by telephone, or electronically using any means, except in the course of your network multiplayer play of the Software over authorized networks; (4) engage in matchmaking for multiplayer play over unauthorized networks; (5) design or distribute unauthorized levels; or (6) reverse engineer, decompile or disassemble the Software. You may transfer the Software, but only if the recipient agrees to accept and be bound by the terms and conditions of this Agreement. If you transfer the Software, you must transfer all components and documentation and erase any copies residing on the game console and/or computer equipment. Your rights in and to this license are automatically terminated if and when you transfer the Software.

LEC warrants to the original consumer purchaser that the media furnished in this product will be free from defects in materials and workmanship under normal use for a period of ninety (90) days from the date of purchase (as evidenced by your receipt). If the media furnished in this product proves to be defective, and provided that the original consumer purchaser returns the media to LEC in accordance with the instructions in this paragraph, LEC will replace the defective media: (a) free of charge to the consumer purchaser, if the media proves to be defective within the ninety (90) day period following the date of purchase, and (b) for a fee of \$15.00 per Compact Disc, if the media proves to be defective after the expiration of the ninety (90) day warranty period, provided that the request is made within a reasonable time from purchase, and LEC continues to distribute the CD commercially. To obtain a replacement CD, please return the CD only, postage prepaid, to LucasArts Entertainment Company LLC, P.O. Box 10307, San Rafael, CA 94912, accompanied by proof of date of purchase, a description of the defect, and your name and return address, as well as a check for \$15.00 per CD made payable to LEC if after expiration of the warranty period. LEC will mail a replacement to you.

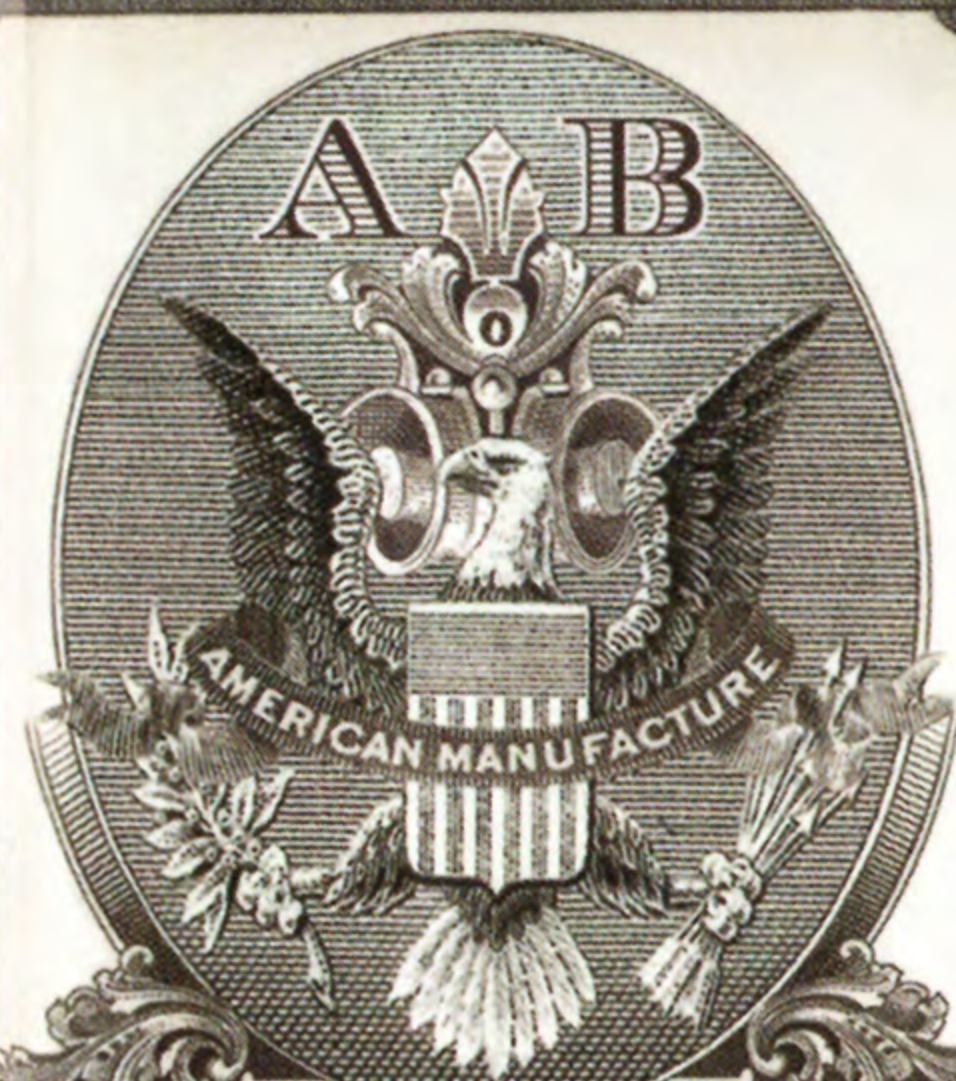
You expressly acknowledge and agree that use of the Software is at your sole risk. Except for the limited ninety (90) day warranty on the media set forth above, the Software and any related documentation or materials are provided "AS IS" and without warranty of any kind. LEC EXPRESSLY DISCLAIMS ALL WARRANTIES, EXPRESS AND IMPLIED, INCLUDING, BUT NOT LIMITED TO, THE IMPLIED WARRANTIES OF MERCHANTABILITY, FITNESS FOR A PARTICULAR PURPOSE AND NONINFRINGEMENT. LEC DOES NOT WARRANT THAT THE FUNCTIONS CONTAINED IN THE SOFTWARE WILL MEET YOUR REQUIREMENTS, THAT THE OPERATION OF THE SOFTWARE WILL BE UNINTERRUPTED OR ERROR-FREE, OR THAT DEFECTS IN THE SOFTWARE WILL BE CORRECTED. THE ENTIRE RISK AS TO THE RESULTS AND PERFORMANCE OF THE SOFTWARE IS ASSUMED BY YOU AND YOU (AND NOT LEC) ASSUME THE ENTIRE COST OF ALL SERVICING, REPAIR AND/OR CORRECTION. SOME JURISDICTIONS DO NOT ALLOW THE EXCLUSION OF IMPLIED WARRANTIES, SO THE ABOVE EXCLUSION MAY NOT APPLY TO YOU.

FRANCIS
11-03

GUARANTEED BY: PHILADELPHIA
WARRANTY - PHILADELPHIA GUARANTEES INC.
REGISTRAR

By *[Signature]*
AUTHORIZED OFFICER.

1935



BULLWHIP MILLS

PRODUCT IS PROHIBITED AND WILL VOID ANY WARRANTIES

*** HENRY JONES, JR. *** *is the holder of the*

AND LIMITED WARRANTY

UNDER NO CIRCUMSTANCES INCLUDING NEGLIGENCE SHALL LEC, OR ITS DIRECTORS, OFFICERS, EMPLOYEES, LICENSORS OR AGENTS, BE LIABLE TO YOU FOR ANY INCIDENTAL, INDIRECT, SPECIAL OR CONSEQUENTIAL DAMAGES (INCLUDING DAMAGES FOR LOSS OF BUSINESS PROFITS, BUSINESS INTERRUPTION, LOST DATA, LOSS OF BUSINESS INFORMATION, AND THE LIKE) ARISING OUT OF THE POSSESSION, USE, OR MALFUNCTION OF THIS PRODUCT, INCLUDING WITHOUT LIMITATION DAMAGE TO PROPERTY AND, TO THE EXTENT PERMITTED BY LAW, DAMAGES FOR PERSONAL INJURY, EVEN IF LEC OR AN LEC AUTHORIZED REPRESENTATIVE HAS BEEN ADVISED OF THE POSSIBILITY OF SUCH DAMAGES OR LOSS. SOME JURISDICTIONS DO NOT ALLOW THE LIMITATION OR EXCLUSION OF LIABILITY FOR INCIDENTAL OR CONSEQUENTIAL DAMAGES, SO THE ABOVE LIMITATION OR EXCLUSION MAY NOT APPLY TO YOU.

YOU AGREE THAT THE LIABILITY OF LEC ARISING OUT OF ANY KIND OF LEGAL CLAIM (WHETHER IN CONTRACT, TORT, OR OTHERWISE) WILL NOT EXCEED THE AMOUNT YOU ORIGINALLY PAID FOR THE USE OF THE SOFTWARE. YOU AGREE TO WAIVE ANY RIGHT TO EQUITABLE RELIEF, INCLUDING, WITHOUT LIMITATION, ANY INJUNCTIVE RELIEF, TO ENFORCE THE TERMS HEREOF.

THIS WARRANTY GIVES YOU SPECIFIC LEGAL RIGHTS, AND YOU MAY HAVE OTHER RIGHTS DEPENDING ON THE LAWS IN YOUR STATE.

This Agreement is governed in all respects by the laws of the State of California as such laws are applied to agreements entered into and to be performed entirely within California between California residents, and you hereby consent to personal jurisdiction in California. You and LEC each agree that any claim or controversy arising out of or related to this Agreement or the Software shall be settled by expedited binding arbitration in accordance with the rules of the American Arbitration Association. Such arbitration shall take place in Marin County, California, and you waive any claim that such forum is inconvenient. Any such claim or controversy shall be arbitrated solely on an individual basis and shall not be consolidated with a claim of any other party. The Arbitrator may not change the terms of this Agreement and may not award any injunctive or other equitable relief. If it is judicially determined that any claim or controversy arising out of or related to this Agreement or the Software cannot be settled by expedited binding arbitration as noted above, then you agree that any such claims or controversies shall be brought and maintained in the state courts located within the County of Marin, State of California or the federal courts of the Northern District of California, and you waive any claim that either such forum is inconvenient. The foregoing shall not preclude LEC from seeking any injunctive relief for protection of LEC' intellectual property rights. If any provision of this Agreement is held to be invalid or unenforceable, such provision shall be struck and the remaining provisions shall be enforced. LEC' failure to act with respect to a breach by you or others does not waive LEC' right to act with respect to subsequent or similar breaches. This Agreement sets forth the entire understanding and agreement between you and LEC with respect to the subject matter hereof. Except as provided herein, this Agreement may not be amended except in a writing signed by both parties.

If the Software is acquired under agreement with the U.S. government or any contractor therewith, it is acquired as "commercial computer software" subject to the provisions hereof, as specified in 48 CFR 12.212 of the FAR and, if acquired for Department of Defense (DoD) units, 48 CFR 227-7202 of the DoD FAR Supplement, or sections succeeding thereto.

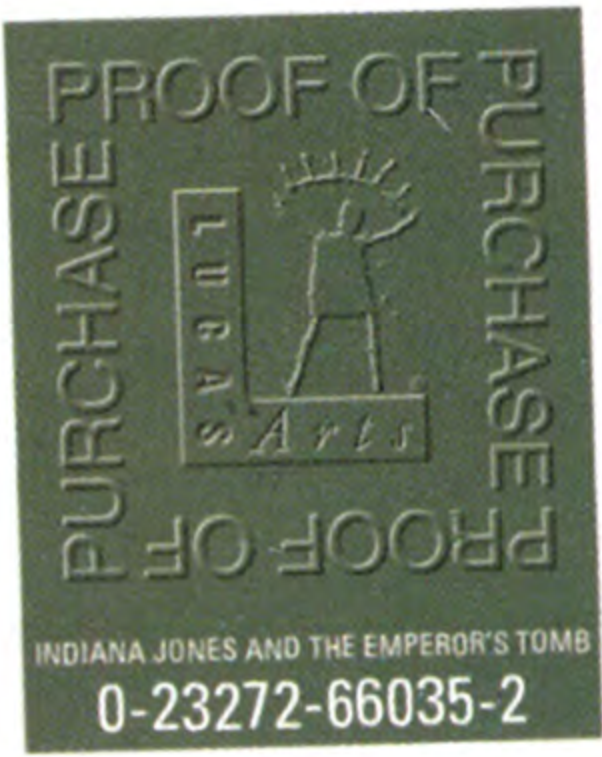


LUCASARTS
ENTERTAINMENT
COMPANY LLC
P.O. BOX 10307,
SAN RAFAEL, CA
94912

This game and manual are each a work of fiction.

All of the characters, events, locations, logos, and entities portrayed or depicted are fictional.

© 2003 LucasArts Entertainment Company LLC. © 2003 Lucasfilm Ltd. & TM or ® as indicated. All rights reserved. Used under authorization. LucasArts and the LucasArts logo are registered trademarks of Lucasfilm Ltd..





6603502

www.emperorstomb.com



INDIANA JONES

AND THE
EMPEROR'S TOMB™

www.indianajones.com

LucasArts Entertainment Company LLC
P.O. Box 10307, San Rafael, CA 94912

© 2003 LucasArts Entertainment Company LLC.

© 2003 Lucasfilm Ltd. & © or TM as indicated. All rights reserved.
Used under authorization. LucasArts and the LucasArts logo are
registered trademarks of Lucasfilm Ltd.

Licensed for play on the PlayStation 2 computer entertainment
systems with the NTSC U/C designation only. "PlayStation"
and the "PS" Family logo are registered trademarks of Sony
Computer Entertainment Inc. U.S.A. THIS SOFTWARE IS
COMPATIBLE WITH PLAYSTATION 2 CONSOLES WITH THE NTSC U/C
DESIGNATION. U.S. AND FOREIGN PATENTS PENDING.