



# HITMAN 2

SILENT ASSASSIN



# WARNINGS

## **WARNING:**

### **READ BEFORE USING YOUR PLAYSTATION®2 COMPUTER ENTERTAINMENT SYSTEM:**

A very small percentage of individuals may experience epileptic seizures when exposed to certain light patterns or flashing lights. Exposure to certain patterns or backgrounds on a television screen or while playing video games, including games played on the PlayStation 2 console, may induce an epileptic seizure in these individuals. Certain conditions may induce previously undetected epileptic symptoms even in persons who have no history of prior seizures or epilepsy. If you, or anyone in your family, has an epileptic condition, consult your physician prior to playing. If you experience any of the following symptoms while playing a video game – dizziness, altered vision, eye or muscle twitches, loss of awareness, disorientation, any involuntary movement, or convulsions – IMMEDIATELY discontinue use and consult your physician before resuming play.

### **WARNING TO OWNERS OF PROJECTION TELEVISIONS:**

Do not connect your PlayStation 2 console to a projection TV without first consulting the user manual for your projection TV, unless it is of the LCD type. Otherwise, it may permanently damage your TV screen.

### **USE OF UNAUTHORIZED PRODUCT:**

The use of software or peripherals not authorized by Sony Computer Entertainment America may damage your console and/or invalidate your warranty. Only official or licensed peripherals should be used in the controller ports or memory card slots.

### **HANDLING YOUR PLAYSTATION 2 FORMAT DISC:**

- This disc is intended for use only with PlayStation 2 consoles with the NTSC U/C designation.
- Do not bend it, crush it or submerge it in liquids.
- Do not leave it in direct sunlight or near a radiator or other source of heat.
- Be sure to take an occasional rest break during extended play.
- Keep this compact disc clean. Always hold the disc by the edges and keep it in its protective case when not in use. Clean the disc with a lint-free, soft, dry cloth, wiping in straight lines from center to outer edge. Never use solvents or abrasive cleaners.

# CONTENTS



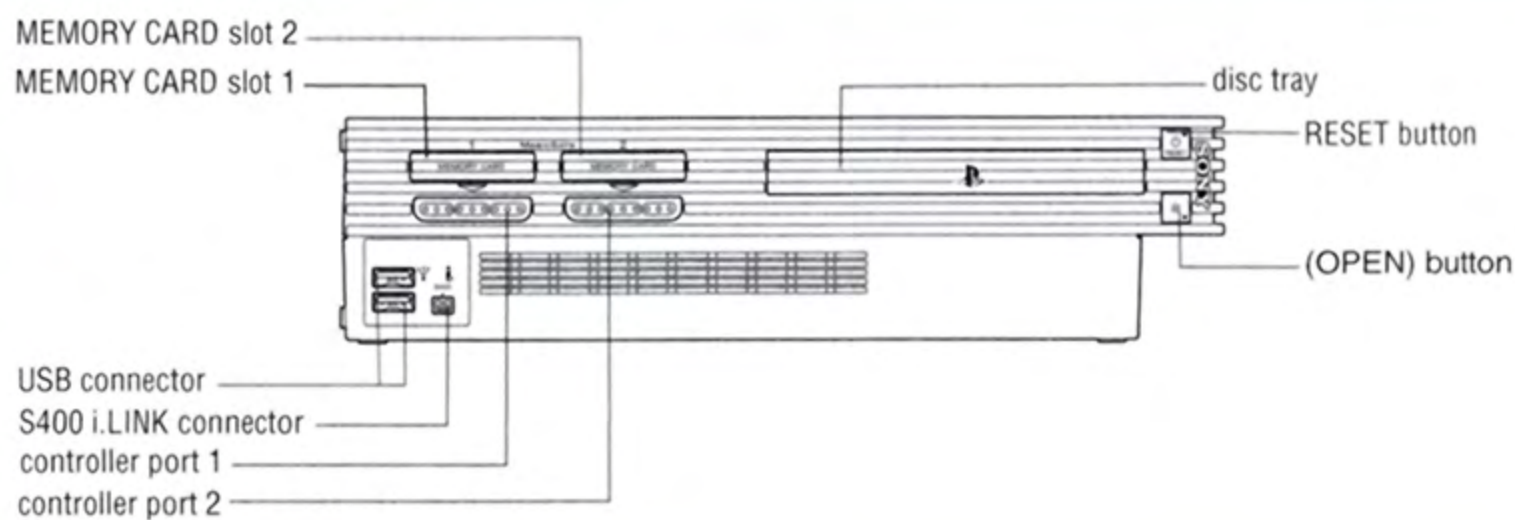
## CORNERED?

Call the EIDOS Interactive Hint Line  
U.S.: 1-900-773-4367  
Canada: 1-900-643-4367

Cost of call: \$0.99 - \$1.49/minute.  
Must be 18 years of age  
or have parent's permission.  
Touch-tone phone required.

Getting Started .....	2
Starting Up .....	3
Default Controls .....	4
Introduction .....	6
Chapters .....	8
Sicily .....	8
St. Petersburg .....	9
Japan .....	10
Malaysia .....	11
Nuristan .....	12
India .....	13
Main Menu .....	14
Mission Elements .....	15
Laptop Computer .....	15
In-game Display .....	16
Equip Menu .....	18
Inventory Menu .....	19
In-game Menu .....	20
Character Types .....	21
Completing a Mission .....	21
Weapons & Equipment .....	22
Options .....	24
Graphics Options .....	24
Sound Options .....	25
Control Setup .....	25
Hints & Tips .....	26
Credits .....	28
Limited Warranty .....	33

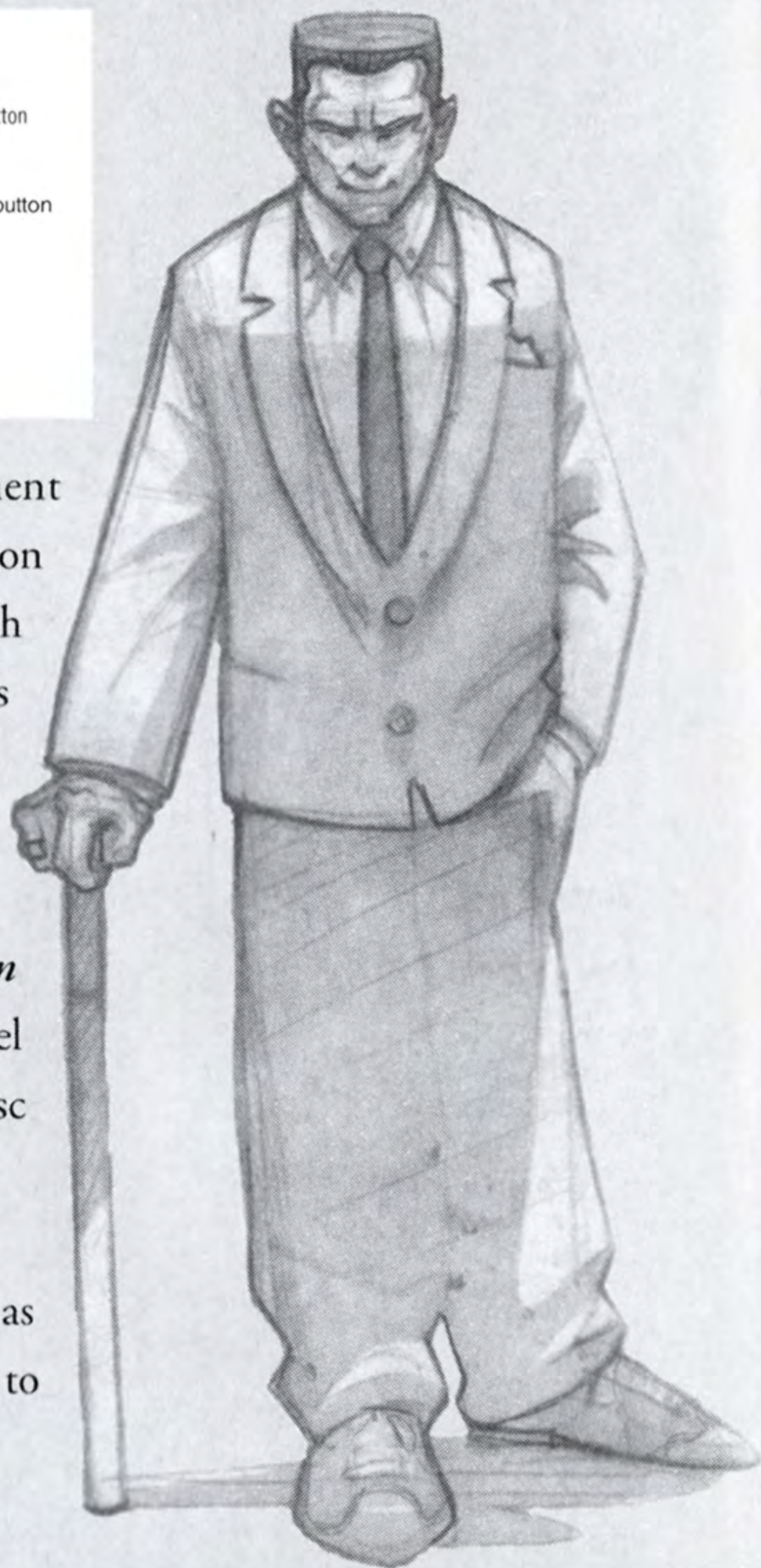
# GETTING STARTING

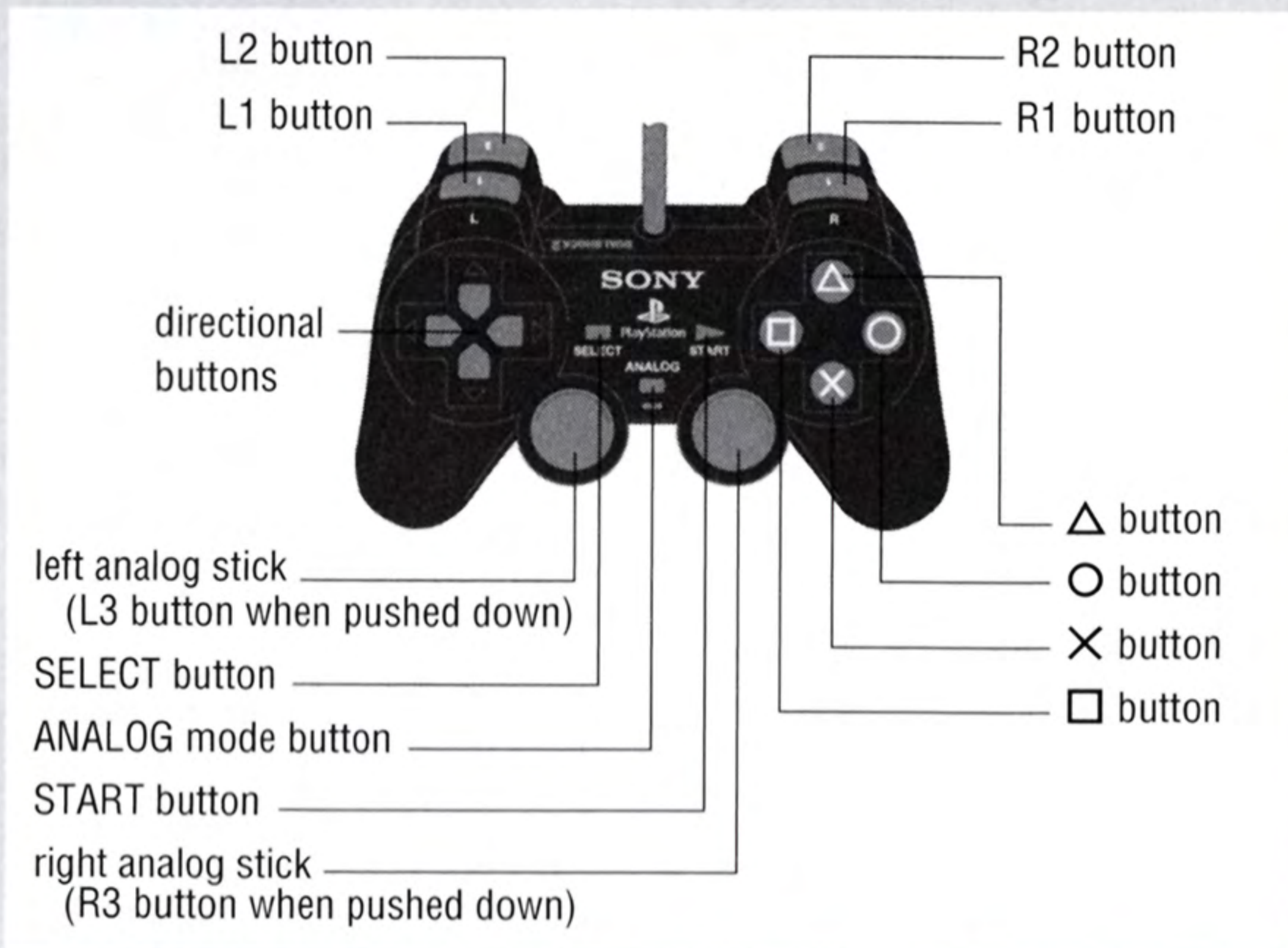


Set up your PlayStation®2 computer entertainment system according to the instructions in its Instruction Manual. Make sure the MAIN POWER switch (located on the back of the console) is turned on. Press the RESET button.

When the power indicator lights up, press the open button and the disc tray will open. Place the *Hitman 2: Silent Assassin* disc on the disc tray with the label side facing up. Press the open button again and the disc tray will close.

Attach game controllers and other peripherals, as appropriate. Follow on-screen instructions and refer to this manual for information on using the software.



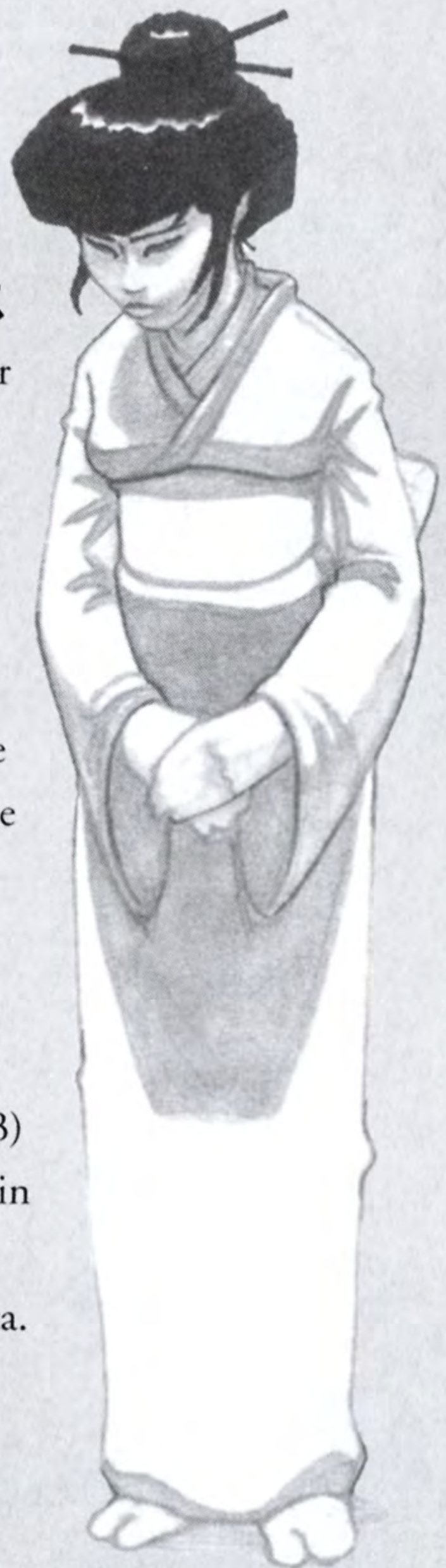


## DUALSHOCK<sup>®</sup>2 ANALOG CONTROLLER

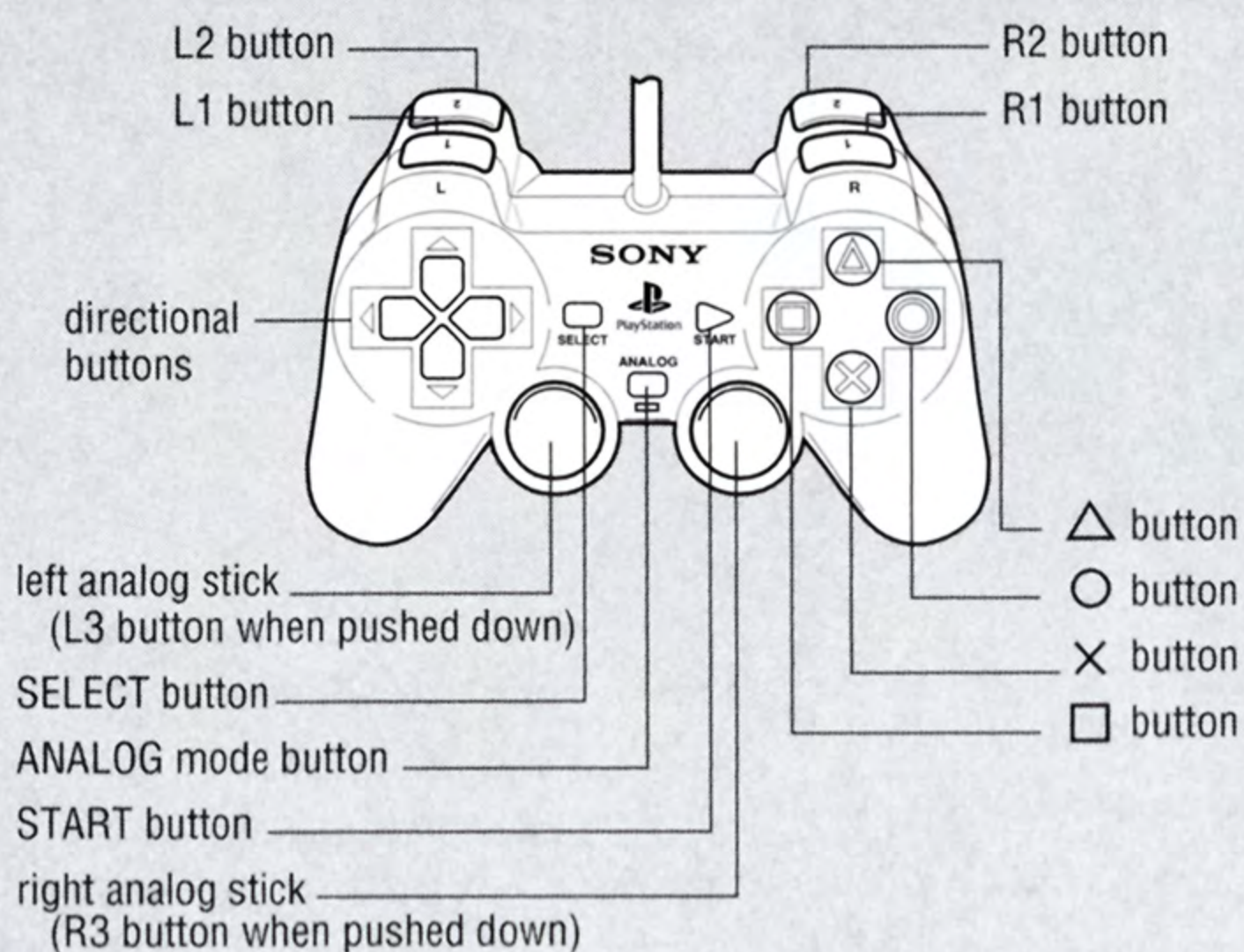
- Connect the controller to controller port 1. Do not insert or remove the controller or accessories once the power is turned on.
- The DUALSHOCK<sup>®</sup>2 analog controller's ANALOG mode button and mode indicator are always ON, indicating that the controller is in analog mode.
- When the controller's vibration function is set to ON, the controller will vibrate in response to game events. Use the Vibration MODE option in the Control Setup Menu to turn the vibration function ON/OFF (see page 25).
- The digital controller cannot be used to play this game.

## MEMORY CARD

- To save your progress, make sure you have a memory card (8MB) (for PlayStation<sup>®</sup>2), with 500MB of free space, inserted in MEMORY CARD slot 1, before you start your game.
- Only MEMORY CARD slot 1 is used to load and save game data.



# DEFAULT CONTROLS



## MENUS

directional button

Select menu item

⊗ button

Accept menu selection

△ button

Cancel selection/Return to previous menu

SELECT button

Open Map and Briefing Menu

START button

Open Pause Options menu

## ACTION

left analog stick

Move Hitman

directional button ◀/▶

Lean left/right

Double tap & hold ◀/▶

Step out left/right

L1 button

press to Sneak/hold to Crouch

L2 button

Run (press once to toggle or hold down)

⊗ button

Open door/Pick up item/Drag

R1 button

Use item

○ button

Drop item

△ button

Exit Keyhole mode

# DEFAULT CONTROLS

## WEAPONS

right analog stick	Move crosshair to aim
L3 button	Precise Aiming; press in and hold to slow down aiming speed
R1 button	Fire/Enter Sniper mode
R2 button	Reload
□ button	Holster weapon
△ button	Exit Sniper mode

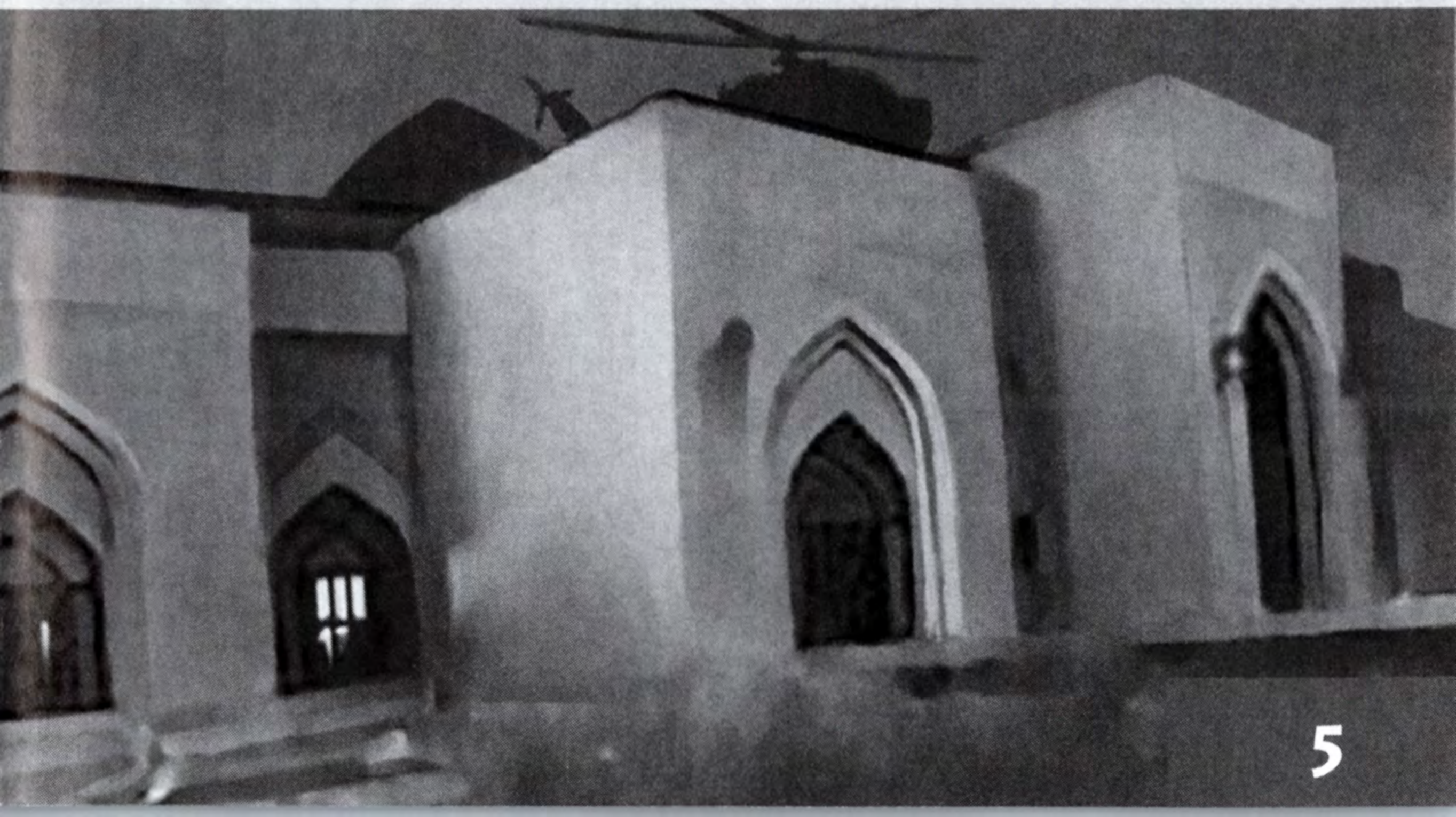
## INVENTORY

□ button	Quick Inventory
△ button	Open/Close Inventory
directional button	Select Inventory item
⊗ button	Accept Inventory selection
○ button	Drop selected item

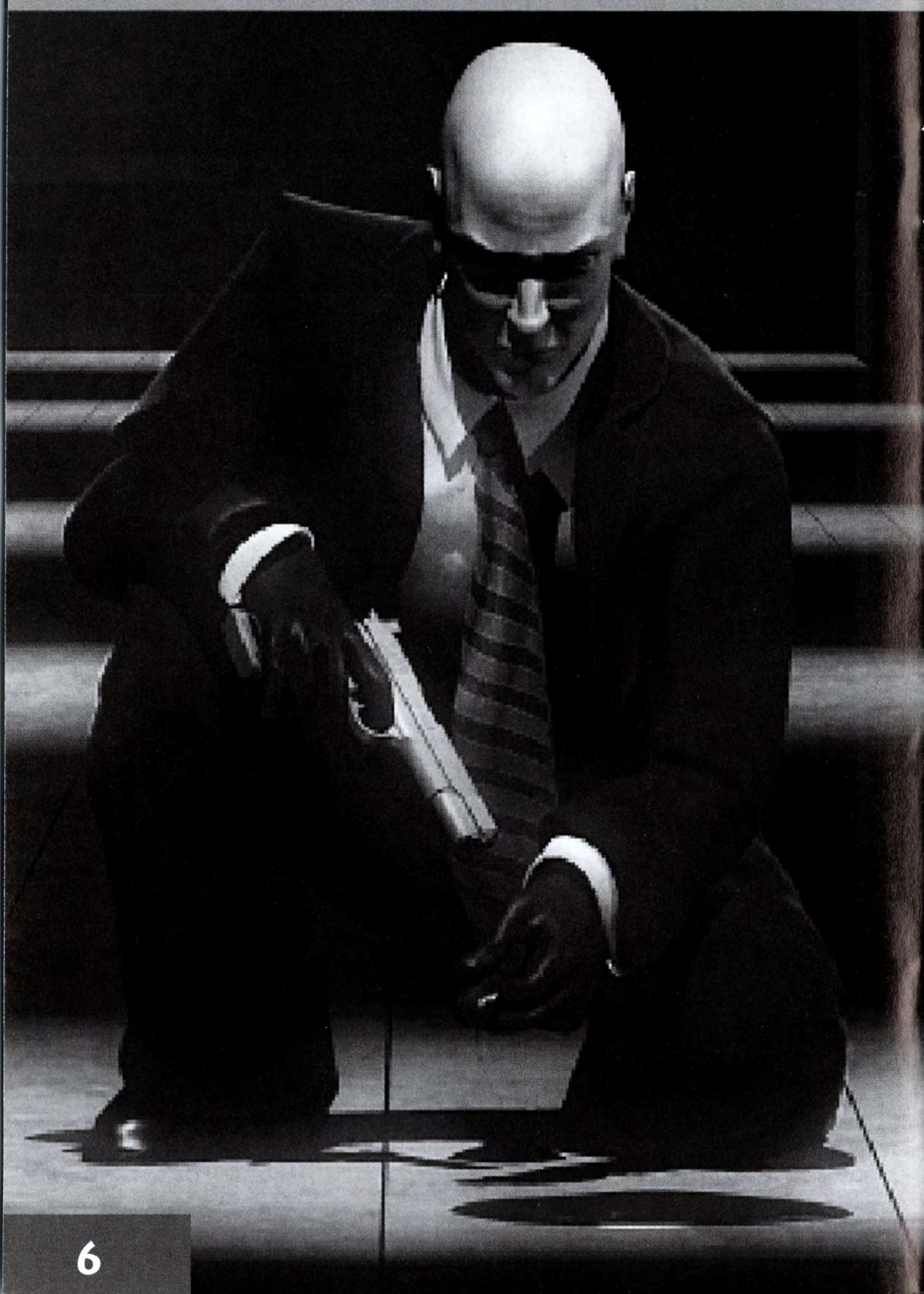
## CAMERA

right analog stick	Move camera (look around)
R3 button	Press in to toggle 1st or 3rd person view
directional button ▲/▼	Zoom in/out

In third person view, zoom in and zoom out affect the distance between Hitman and the camera. When you're using a rifle with a scope attached, Zoom In and Zoom Out affect the scope's magnification levels.



# INTRODUCTION





# INTRODUCTION

You're back. Are you prepared? The past is about to catch up with you.

You — the hired gun with a sense of loyalty; the assassin with a sense of justice.

And faith? What of faith? Trust in your god, but carry a loaded gun.



Bind yourself with a mastery of weapons and the thoroughness of groundwork. Know when to take your time, and when to strike instantly.

Track down those who forced you out of retirement. Seep through the deep fractures of the world. Flow through the quarters of sin, crime, greed and dishonor.

Be certain, 47, in such places your enemies will hide. Until the only safe place is behind you.

Watch your back, 47.

The enemy is closer than you think ...

# CHAPTERS



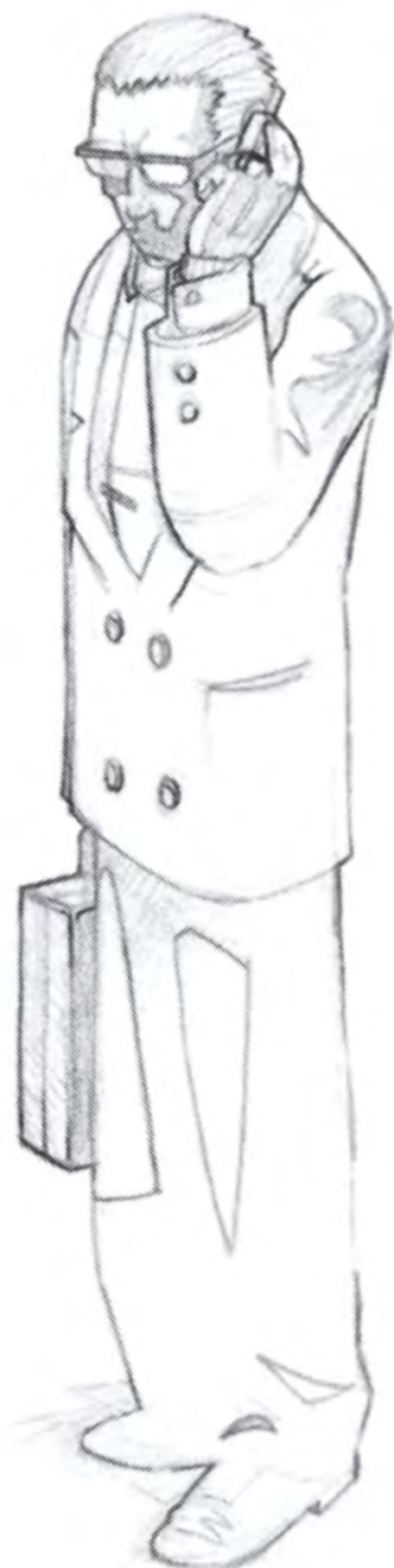
## SICILY

Spring comes early to the Gulf of Castellammare. The citrus groves west of Palermo are already in fruit by the end of February, and the Sicilian air is rich with the scents of lemon and orange. From the sea, hillside villages are splashes of pastel jewelry on a brilliant carpet of green and gold.

The dome of the Church of the Carmine rises above the awnings of local market stalls, where even-handed traders toil and prosper. Yet above it all, the grasping shadow of the Cosa Nostra lengthens.

Ominous.

Merciless.





## ST. PETERSBURG

Once called Leningrad, this old city has seen more than its share of bullets and betrayal. Expect guards, criminals and soldiers to be well equipped, experienced and highly suspicious. Old Communists vie with corrupt Capitalists for control of the wide-open boulevards, where few can hide — least of all foreigners.

This is difficult terrain, even for a trained assassin. Proceed with caution.



# CHAPTERS



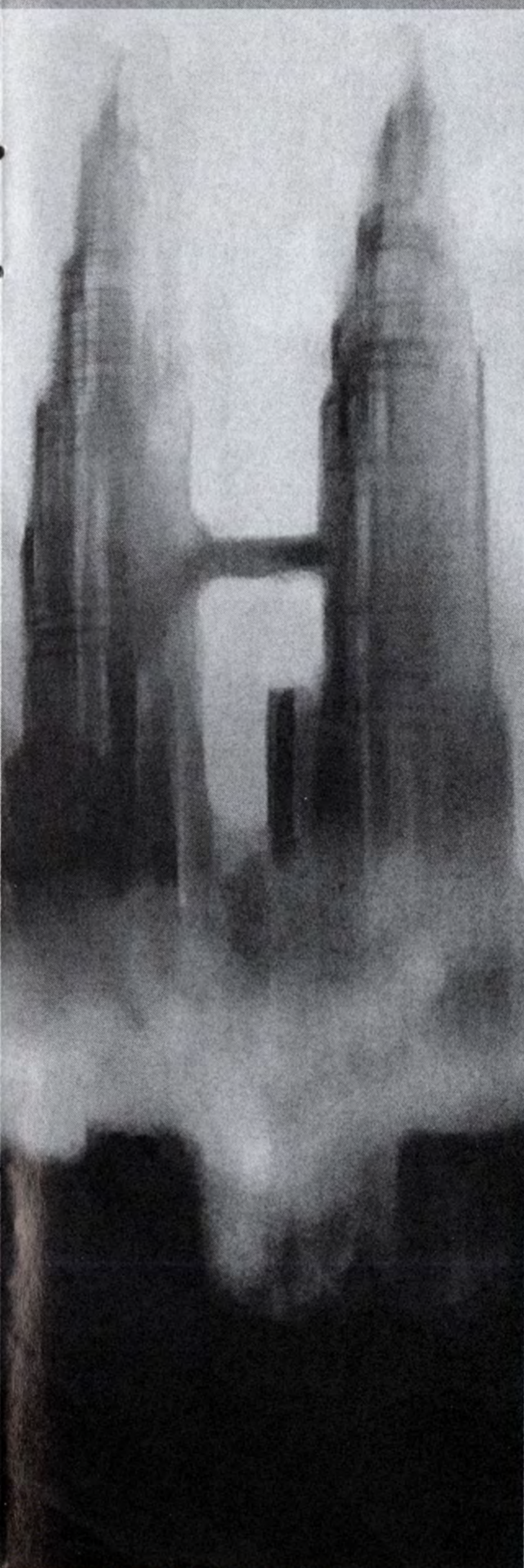
## JAPAN

Mountains cover three-quarters of Japan, with the larger ranges running through the center of the Japanese archipelago like a spine.

Towering above a beautiful lake and archaic temple-studded town emerges the sacred mountain of Kurokiyama — an inaccessible site visited only by the occasional Shinto pilgrim.

An ancient six-story castle with ceramic tiled *hogyo* roofing and massive stonewalls looks down from its strategic position high on the neck of the mountain. A local *shogun* built it here during the *Edo* period — it is a fitting setting for a 20th century *oyabun* like Masahiro Hayamoto. From here he controls his *yakuza* maneuverings and international arms deals.





## **MALAYSIA**

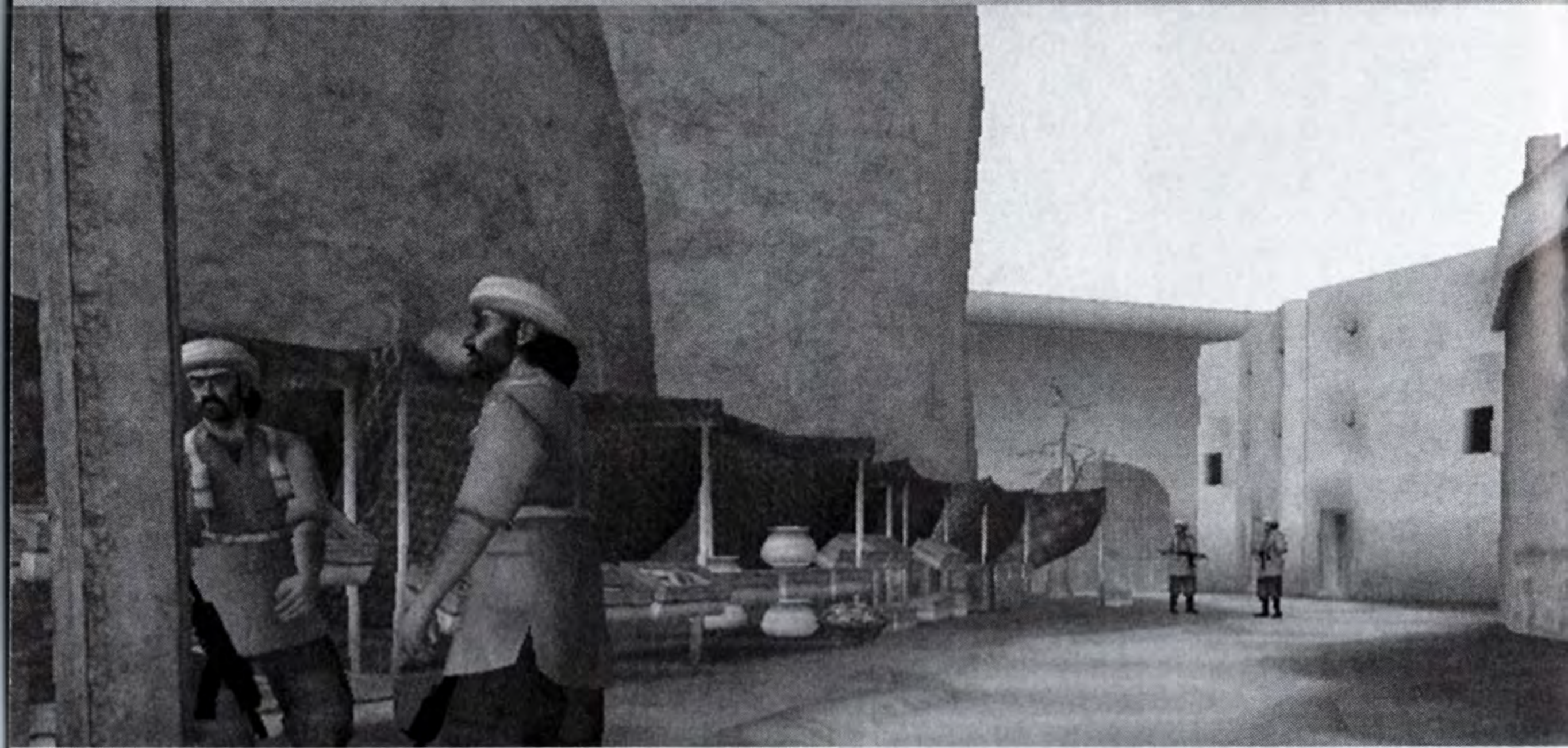
Kuala Lumpur, Malaysia. A city brimming with prosperity, luxury and incredible opportunity.

Populated by a teeming chaos of cultures, it attracts the sharks of organized crime from all over the world. It's a feeding frenzy.

At the same time, spears of sterile office buildings burst out over the new and ancient populace, reaching for the skies. And everyone is staking a claim for the future.



# CHAPTERS



## NURISTAN

In a remote valley, hidden in the *Hindu Kush* mountain range of Nuristan, lies a secluded citadel. Currently, it's ruled by a local *khan*, Abdul Bismillah Malik, known as *Al-Khabir* (The Big Guy), and his fierce tribe of warmongering *mujahedin*.

A minaret doubles as a watchtower — overlooking the steppes, hillsides and nearby river. Anyone openly approaching the citadel can be seen for miles. This, and the solid brick walls surrounding the citadel, seem to signal security, but this stronghold has changed hands many times over the centuries. A professional always finds a way.

## INDIA

A Sikh uprising in this remote region of Punjab, Northern India, in the mid 1980s was ruthlessly repressed by government troops. Many innocent locals were killed, and ever since, no outsider has dared venture into this territory for fear of reprisals.

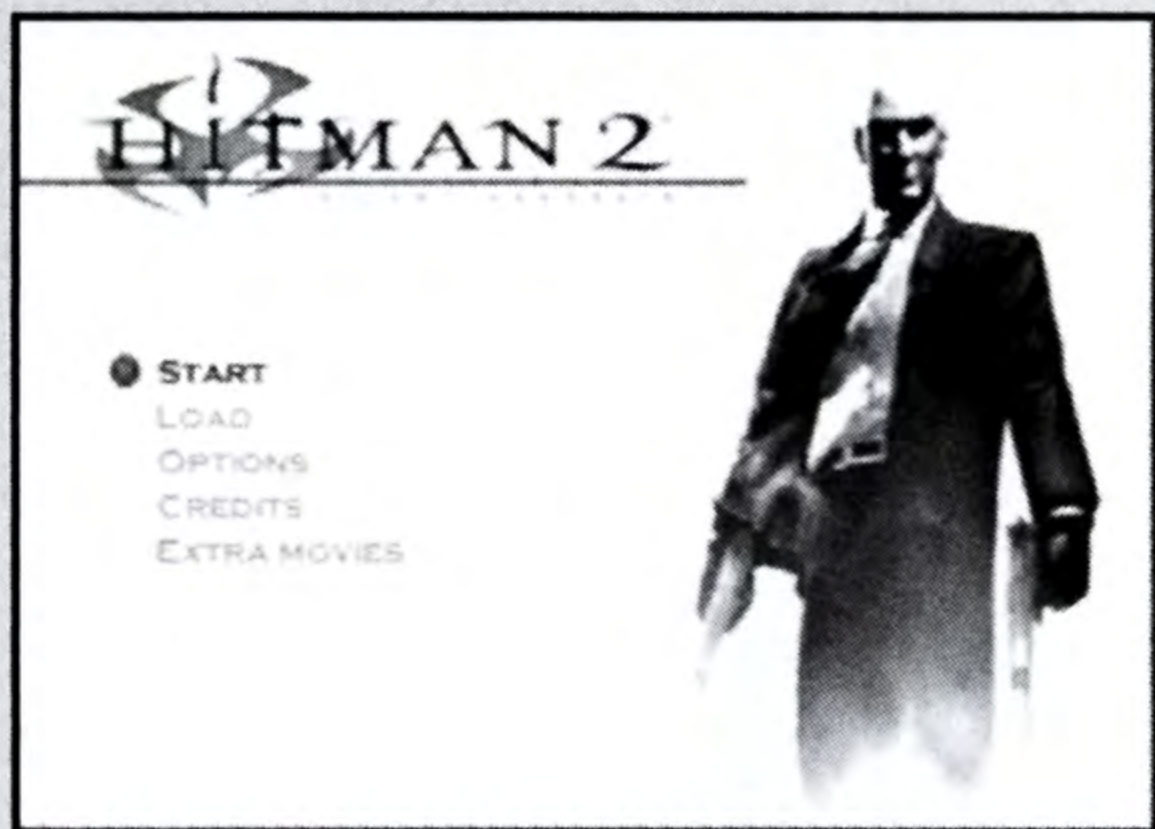
A maze of small shops and *bangalas* (small houses) suggest some prosperity in this otherwise poverty-stricken province. Sure enough a magnificent, ancient *gurdwara* (Sikh temple) — complete with marble inlays, glazed tiles, filigree partitions, priceless murals and gold domes — is protected by the high walls of a *qila* (fort) ... and fanatical believers.



# MAIN MENU

## MENU CONTROL

On all menu screens, use the directional button to move the cursor over the menu option you want, then press the **X** button to confirm your selection. If there are more menu options than those visible on screen, press the directional button **↑** or **↓** to scroll the menu up or down. To cancel and return to the previous menu, press the **△** button.



## MAIN MENU OPTIONS

**START** Begin a new game. **Note: You must use a memory card to save your progress.**

*Hitman 2: Silent Assassin* is an epic game. We highly recommend using a memory card to get the most enjoyment from playing. This game requires a memory card with at least 500kb of free space in order to save.

**SELECT DIFFICULTY** At the beginning of a new game, select your difficulty level.

The difficulty level affects a number of factors in the game, including Hitman's health points, the visibility of characters on the map screen and the reaction speed and accuracy of guards. Also, in each difficulty mode you are permitted only a certain number of progress saves during a game level. (By completing certain tasks on some levels you can earn a bonus save.) The difficulty modes are:

- **NORMAL** Recommended for beginners; 7 saves allowed per level.
- **EXPERT** For moderately experienced players; 2 saves allowed per level.
- **PROFESSIONAL** Seasoned player challenge; 0 saves allowed during a level.

**LOAD** If you have saved your game previously it can be accessed from this menu. Make sure you are using a memory card containing save game data. When you select LOAD, a list of progress saves will be displayed. Select the game you want to load to resume it at the point it was saved.

**OPTIONS** Reset some game settings. See page 24 for details.

**CREDITS** See a roster of hit men and troubleshooters who brought you this game.

**EXTRA MOVIES** Open a list of movie files of upcoming games and select a movie to view.

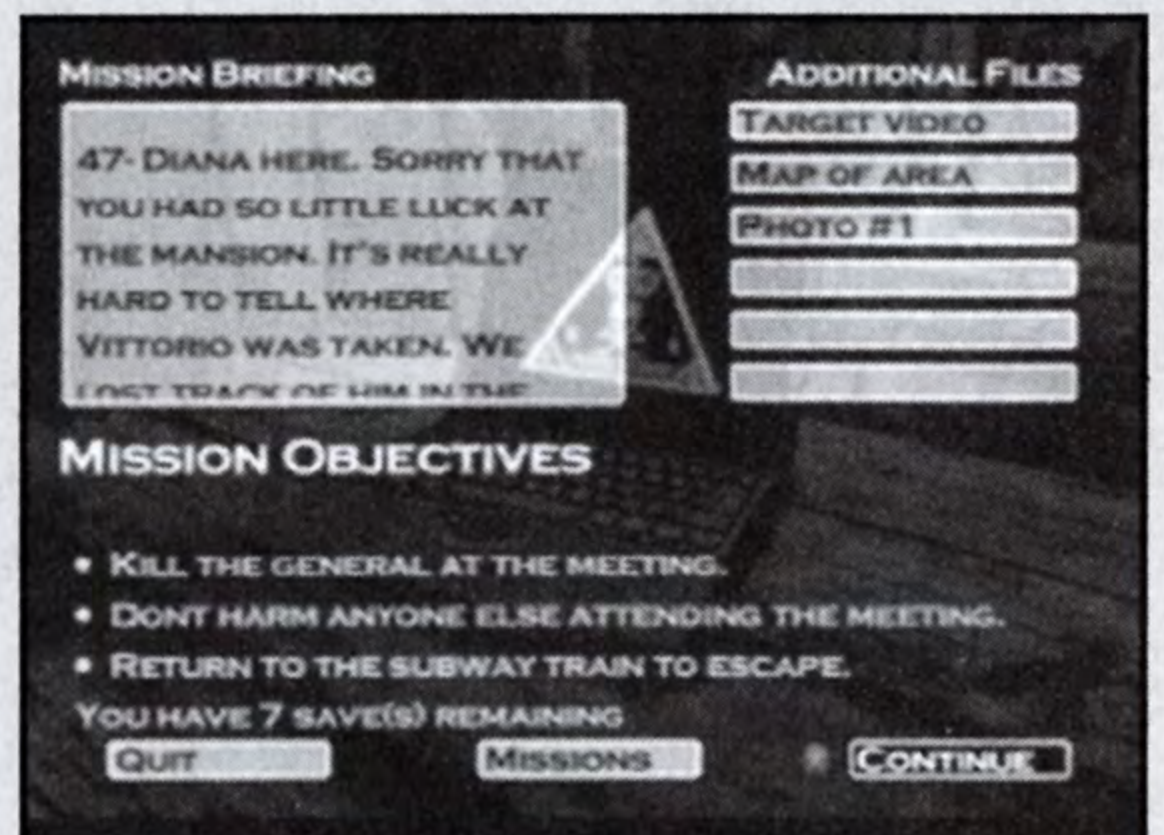




# MISSION ELEMENTS

## LAPTOP COMPUTER

Hitman uses a Laptop Computer to communicate with the agency that assigns him missions. All information pertaining to the mission is stored on this laptop. It also serves as a pre-mission preparation area. Select the required item to access secret files and footage:



**MISSION BRIEFING** A detailed list of objectives for the mission ahead. All objectives must be carried out successfully to complete the mission.

**SATELLITE MAP** A plan view of the target area. Note: Important items, targets and enemies are not displayed on the map until you have entered the mission.

**TARGET INFORMATION** Information regarding the target and his or her appearance.

**SURVEILLANCE FOOTAGE** Top secret, recorded footage of key information supplied by Agency. Note: This footage is only available before the mission starts.

**MISSIONS** Access a list of previously completed missions. From this screen you can select a mission to play again.

**QUIT** Exit out to the Main Menu.

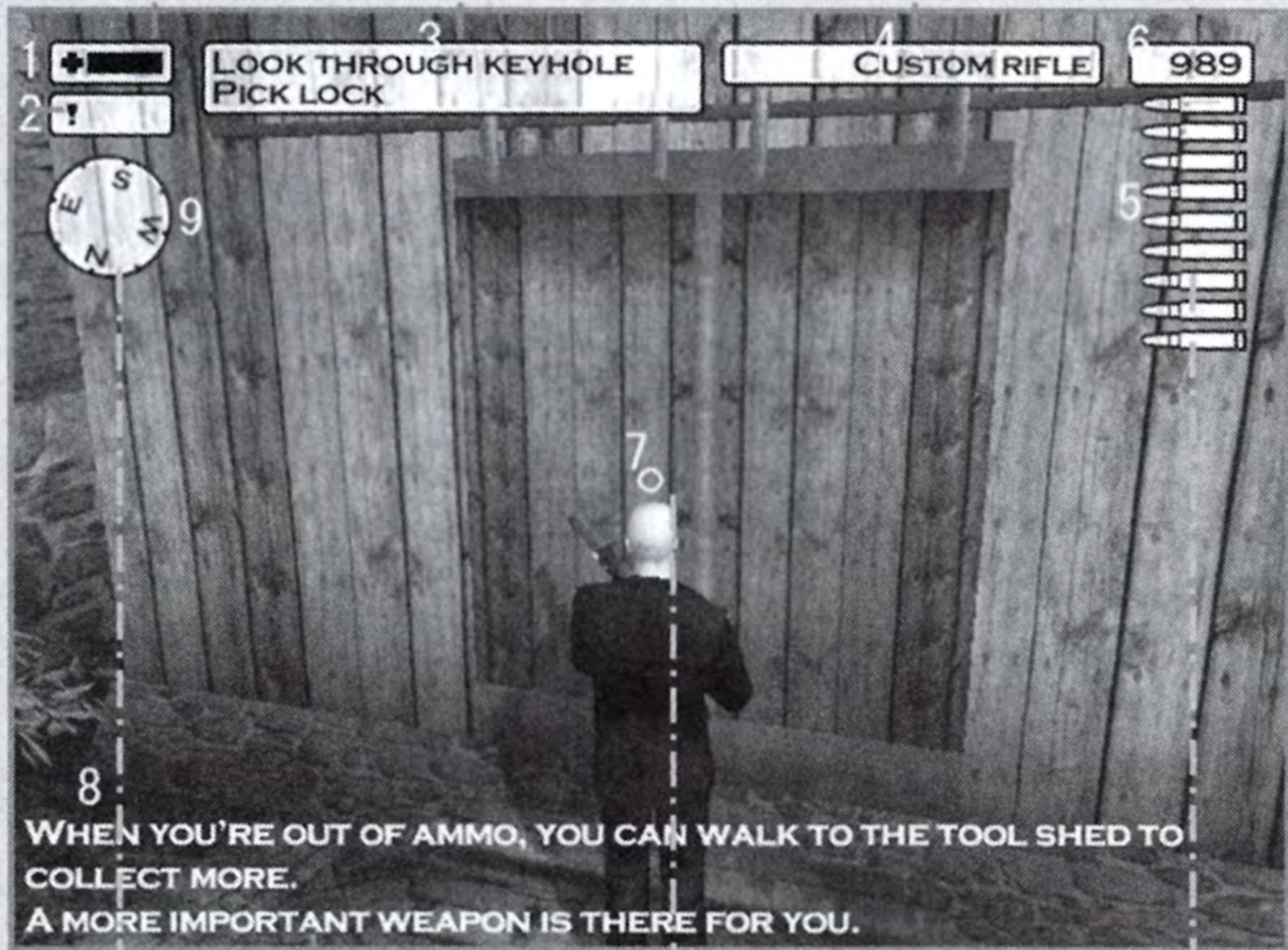
**CONTINUE** Proceed with the mission.



# MISSION ELEMENTS

## IN-GAME DISPLAY

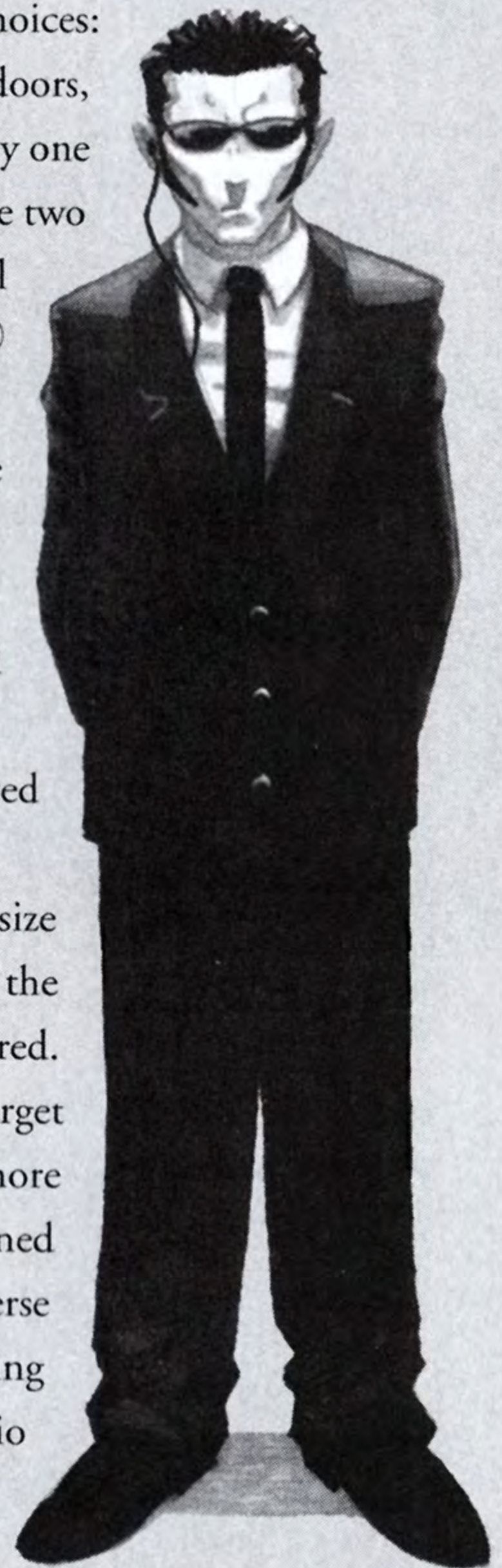
- 1. HEALTH BAR
- 2. THREAT METER
- 3. AVAILABLE ACTIONS
- 4. CURRENT WEAPON/ITEM
- 5. AMMO
- 6. SPARE AMMO



- 9. COMPASS
- 7. CROSSHAIRS
- 5. AMMO
- 8. INFORMATION

# MISSION ELEMENTS

- 1. HEALTH BAR** Hitman's current health: as he sustains damage and injuries the bar begins to shrink. If the bar dips below 25% capacity it turns red to alert you to Hitman's predicament. Note: Damage is location based, which means a shot to the head is almost certain to kill you while a shot to the arm will not.
- 2. THREAT METER** Displayed in the top left of the screen under the health bar, this meter indicates the level of danger Hitman is facing. The more the meter pulses, the higher the danger. When the meter pulses red, watch out! Hitman is in big danger. The meter can be a useful tool, and if monitored, can alert you to potential problems such as a failed disguise.
- 3. AVAILABLE ACTIONS** This is a context sensitive list of choices: it depends on your location, the proximity of objects such as doors, dead bodies, etc. and the currently selected item. If there is only one choice on the list, press the ⊗ button to perform it. If there are two or more choices, hold down the ⊗ button, use the directional button to highlight the action you want, then release the ⊗ button to perform it.
- 4. CURRENT WEAPON OR ITEM OF EQUIPMENT** If the currently selected item is holstered (i.e. Hitman's hands are empty) then the display here is blank.
- 5. AMMO** Remaining ammunition in the clip of the selected weapon.
- 6. SPARE AMMO** Backup ammunition available for the selected weapon.
- 7. CROSSHAIRS** Show exactly where Hitman is aiming. The size of the crosshairs indicates the accuracy of any shots fired — the larger the crosshairs, the wider the grouping of any shots fired. When the crosshairs turn red, any shots fired should hit the target successfully. Note: While certain guns are inherently more accurate, other factors have a bearing on accuracy. Sustained bursts of fire and shooting while moving both have an adverse effect; but standing still, or even better — crouching, and taking time to aim and squeeze off a short burst will improve the ratio of shots on target.
- 8. INFORMATION** Useful information such as warnings appears here.
- 9. COMPASS** Indicates the direction Hitman is facing.



# MISSION ELEMENTS

## EQUIP MENU

Displayed before a mission begins, this menu allows Hitman to equip himself for the task ahead.

### *AVAILABLE WEAPONS*

A list of the weapons and equipment that can be taken along for the mission ahead. Select an item to add it to your inventory.

### *EQUIPPED WEAPONS*

Lists the inventory of weapons and equipment currently selected for the mission ahead. Select an item to remove it from your inventory.

### *ITEM IMAGE*

Picture of the currently selected item.

### *ITEM INFORMATION*

Name and description of the highlighted item.

Various specifications are included for weapons: caliber, clip capacity, length and weight.

### *MISSIONS*

Select this button to return to the list of previously completed missions.

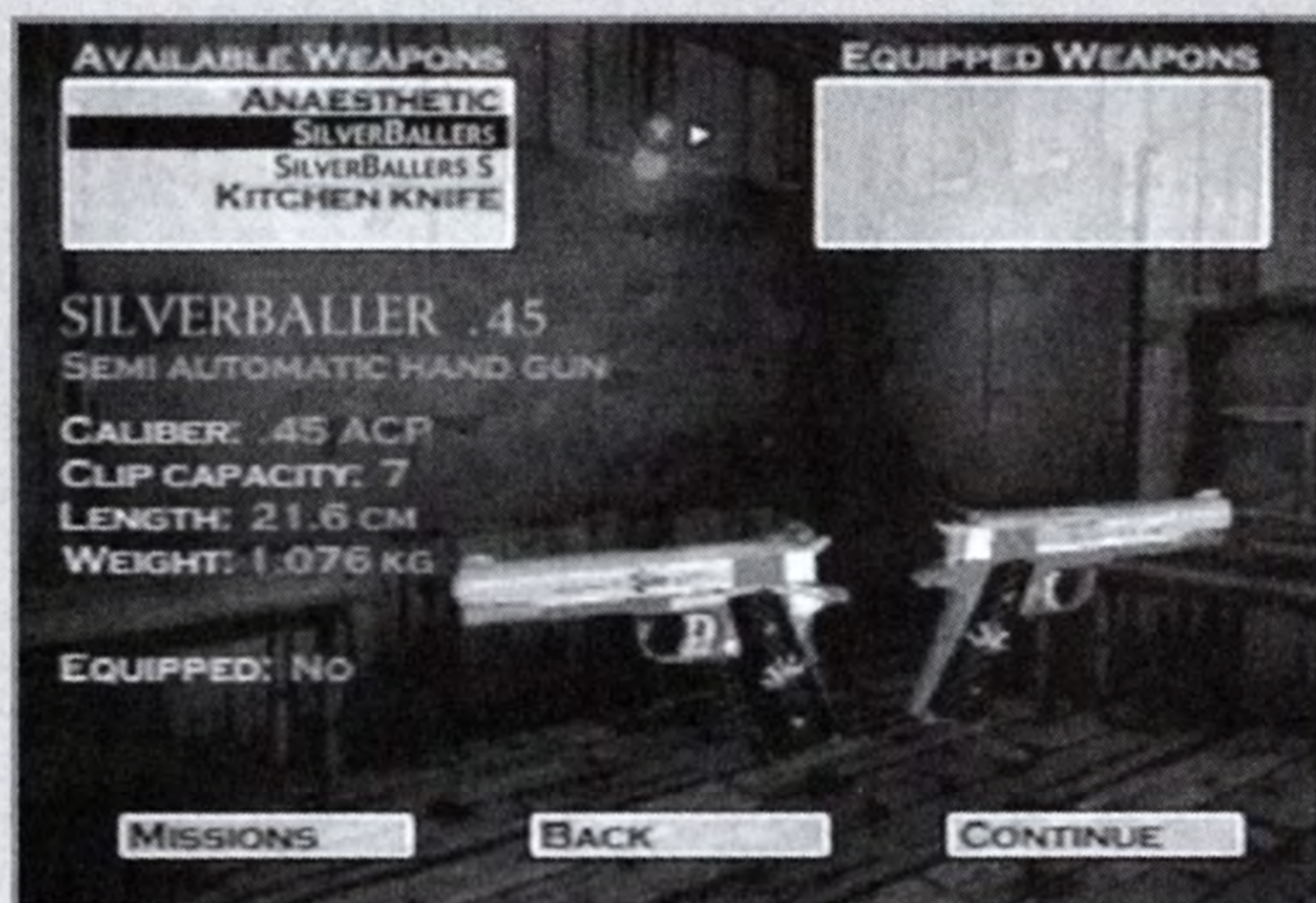
### *BACK*

Select this button to return to the Main Menu.

### *CONTINUE*

Select this button to start the mission.

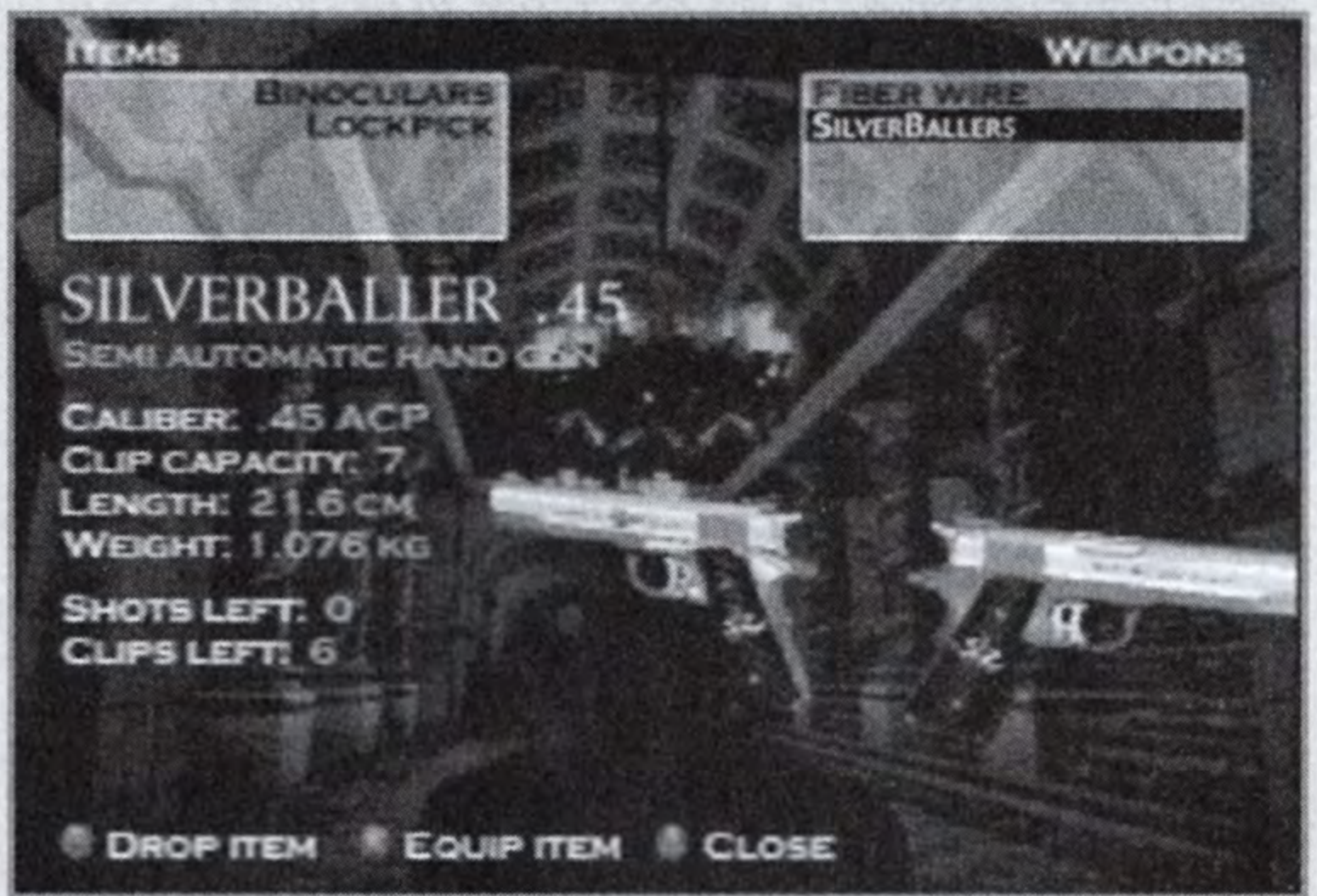
Note: You can equip most of your smaller weapons for each mission, but you are restricted to only one large weapon (rifle, shotgun, sniper rifle, etc.).



# MISSION ELEMENTS

## INVENTORY MENU

This menu allows you to manage your inventory. It can be displayed at any time during a mission by pressing the  $\triangle$  button. The game is paused while the Inventory Menu is open.



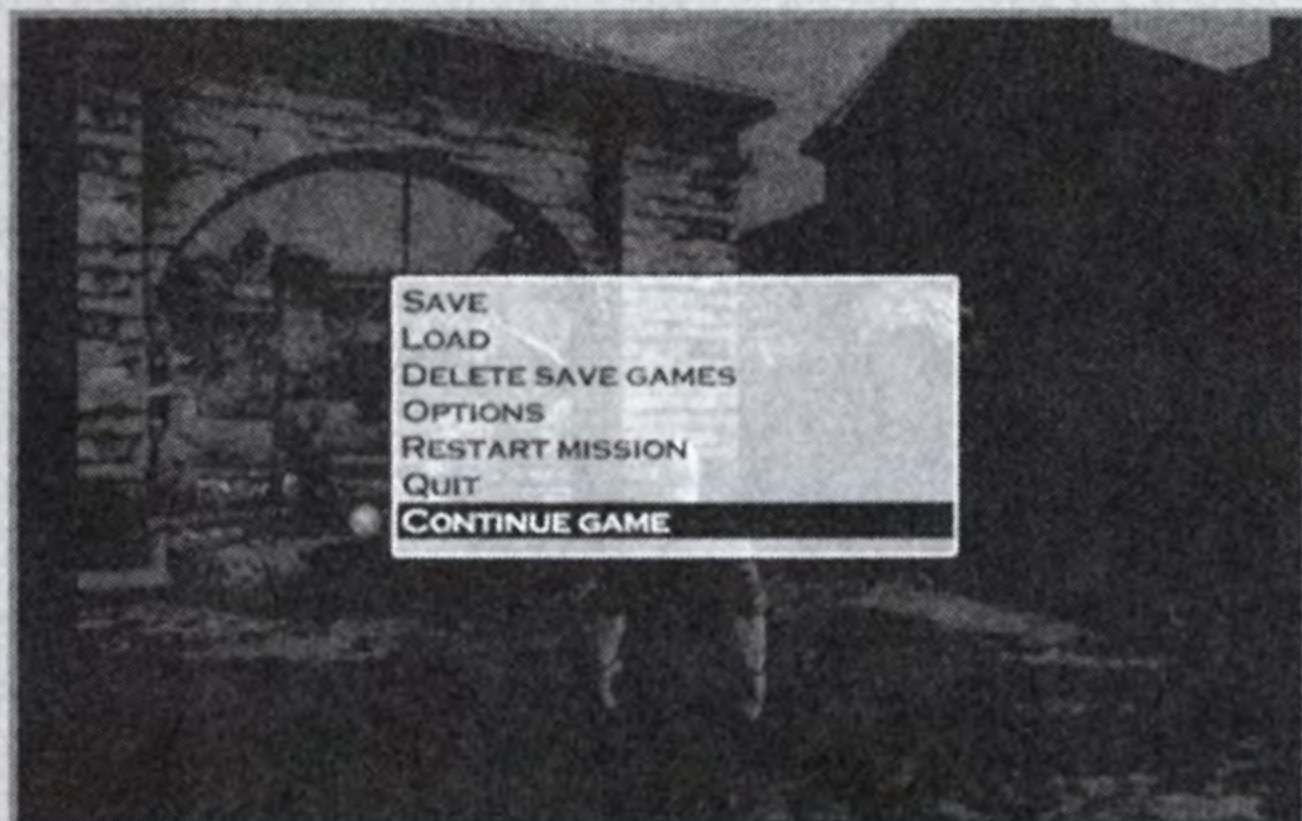
**ITEMS LIST** Shows available items. Highlight an item and press the  $\odot$  button to drop it. (Items crucial to Hitman's progress, such as fiber wire, cannot be dropped.)

**WEAPONS LIST** Shows available weapons.

**ITEM INFORMATION** Select an item in either list and its name and description are displayed here. Various specifications are included for weapons: caliber, clip capacity, length, weight, bullets remaining and clips remaining.

**IMAGE** Picture of the currently selected item.

# MISSION ELEMENTS



## IN-GAME MENU

Press the START button at any time during play to pause the game and access the In-game Menu. The options are:

**SAVE GAME** As you advance through the game you will find yourself in situations where you would like to save your progress. To save a game:

1. Press the START button to pause the game.
2. Select SAVE GAME from the In-game Menu.
3. Select CREATE NEW for a new save game or select a save game to overwrite.
4. If your memory card is unformatted, you will now have the option to format it or exit the save process.

**LOAD GAME** Restore a previously saved game. Make sure you are using a memory card containing save game data. When you select LOAD, a list of progress saves will be displayed. Select the game you want to load to resume it at the point it was saved. Save games can also be resumed from the LOAD option in the MAIN MENU.  
**DELETE SAVED GAMES** Delete save games by selecting them from the list that appears when you select this option.

**OPTIONS** Access the Options menu (see page 24).

**RESTART MISSION** Choose to restart the mission.

**QUIT** Select this and then select YES to end the current game and return to the Main Menu. Caution: If you have not saved your game recently and you quit out of the game to return to the Main Menu all your progress may be lost. It is strongly recommended that you always save your game before quitting.

**CONTINUE GAME** Exit the menu and continue the current game.



# MISSION ELEMENTS

## CHARACTER TYPES

A variety of character types live within the world of *Hitman 2: Silent Assassin*. Some of these people pose no threat to Hitman's mission and can actually be allies. Choose your targets wisely!

**TARGET** Your intended victim. There is at least one per mission, who must be destroyed to complete mission.

**ENEMY** Hostiles, usually armed bodyguards of some description, whose job is to protect the target.

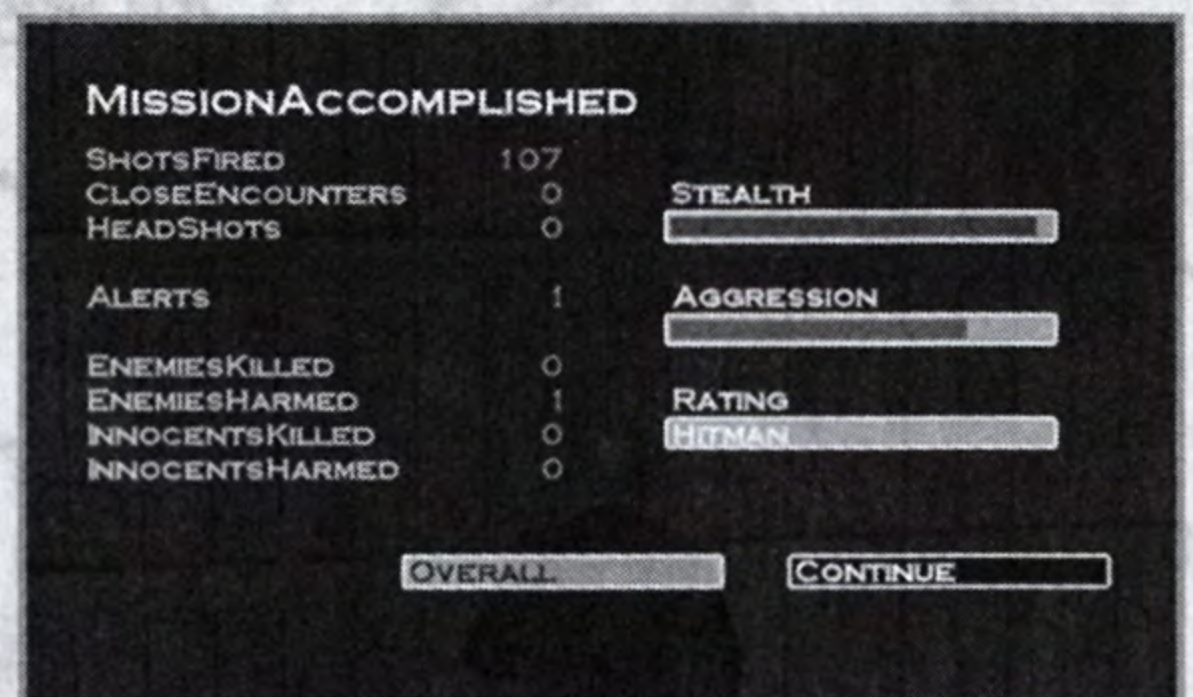
**INNOCENT** Civilians and bystanders. They pose no direct risk to you so try not to let them get caught in the crossfire.

**POLICE** Members of the local law enforcement community. They will attack if they witness you so much as carrying your weapons unconcealed.

**VIPs** These are the people you have been charged with protecting. A positive mission outcome is contingent upon ensuring their survival.

## COMPLETING A MISSION

Once you make the hit, complete all other objectives and successfully escape the area, the mission is over. A ratings screen is displayed to show how you performed. Statistics are presented as a last mission score and an overall score.



The categories are:

- Shots Fired
- Close Encounters
- Head Shots
- Alerts
- Enemies Killed
- Enemies Harmed
- Innocents Killed
- Innocents Harmed
- Rating
- Mission Time
- Stealth Meter
- Aggression Meter

Press the button to continue on to the next mission.

# WEAPONS & EQUIPMENT

## CLOSE COMBAT

Small, lightweight, and easily concealable, close combat weapons such as knives and the fiber wire allow near silent kills. They have their drawbacks though, so are only used by the real professionals. **Note:** When approaching a target from behind, make sure Hitman is in Sneak mode so as not to alert the intended target.



## HANDGUNS

Lightweight and easily concealable, the pistols and revolvers are perfect for close-up kills although they make a lot of noise unless silenced. In a tight situation, Hitman can always rely on the dual Silverballers for the extra firepower.

## SUB-MACHINEGUNS (SMG)

Only just concealable, the sub-machineguns are perfect for fierce fire fights. Be warned though, a high rate of fire can leave Hitman with an empty clip and no more ammo.

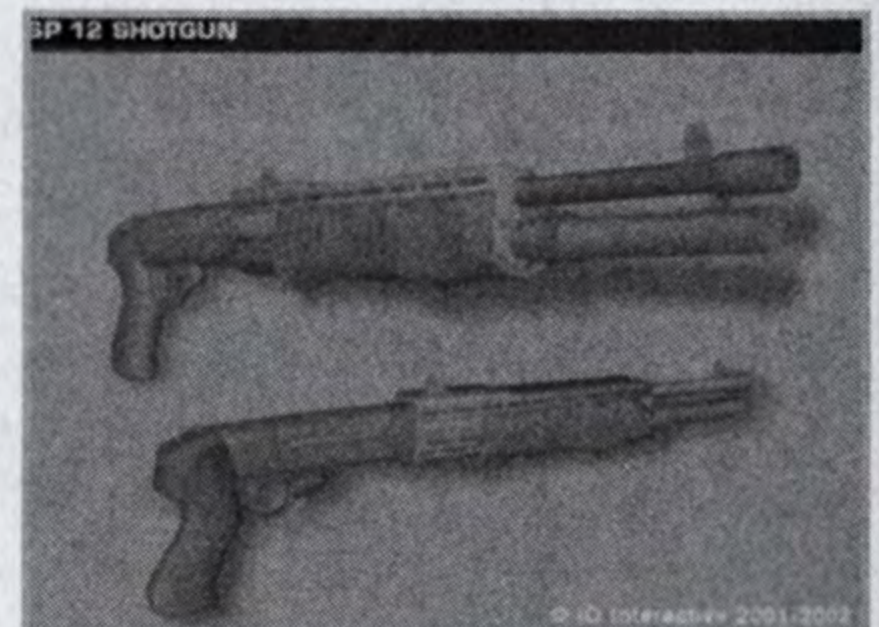


## RIFLES

Large and precise, the rifles are best used over distance. Hitman is only capable of carrying one rifle at time and this cannot be concealed.

## SHOTGUNS

The shotgun can have a devastating effect at close range but accuracy and damage are severely reduced over longer distances.

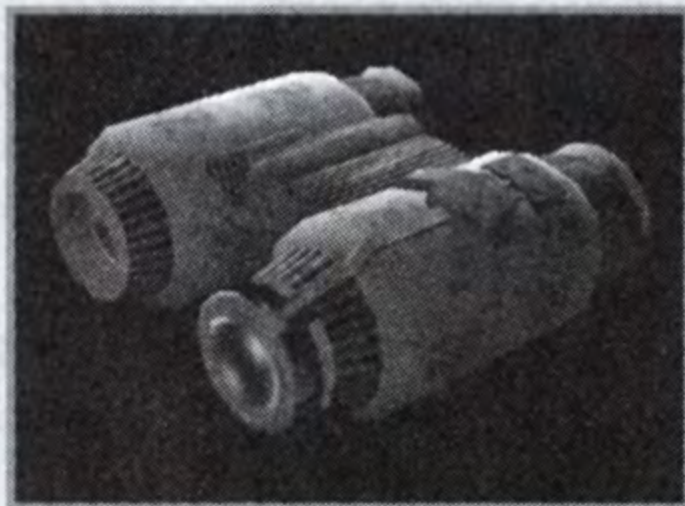




# WEAPONS & EQUIPMENT

## SNIPER RIFLES

Highly accurate and extremely powerful, the sniper rifle is the definitive long-range weapon. When its used in the hands of a skilled professional, targets can be eliminated in a split second. Positioning, patience and a steady hand are pre-requisites for the sniper's role. Note: You can crouch to reduce the bob effect on the sniper scope. You can also press in and hold the L3 button to activate Precise Aiming. This will increase your accuracy by slowing down your movement.



## BINOCULARS

An excellent tool for spotting targets and planning safe routes through the missions.

## MAP

An essential piece of equipment if you are to find your way around. The map displays all information available on the level and allows precision planning and execution of a hit.



## NIGHT VISION GOGGLES

The high-tech solution to darkness, although your field of view can be severely impaired.

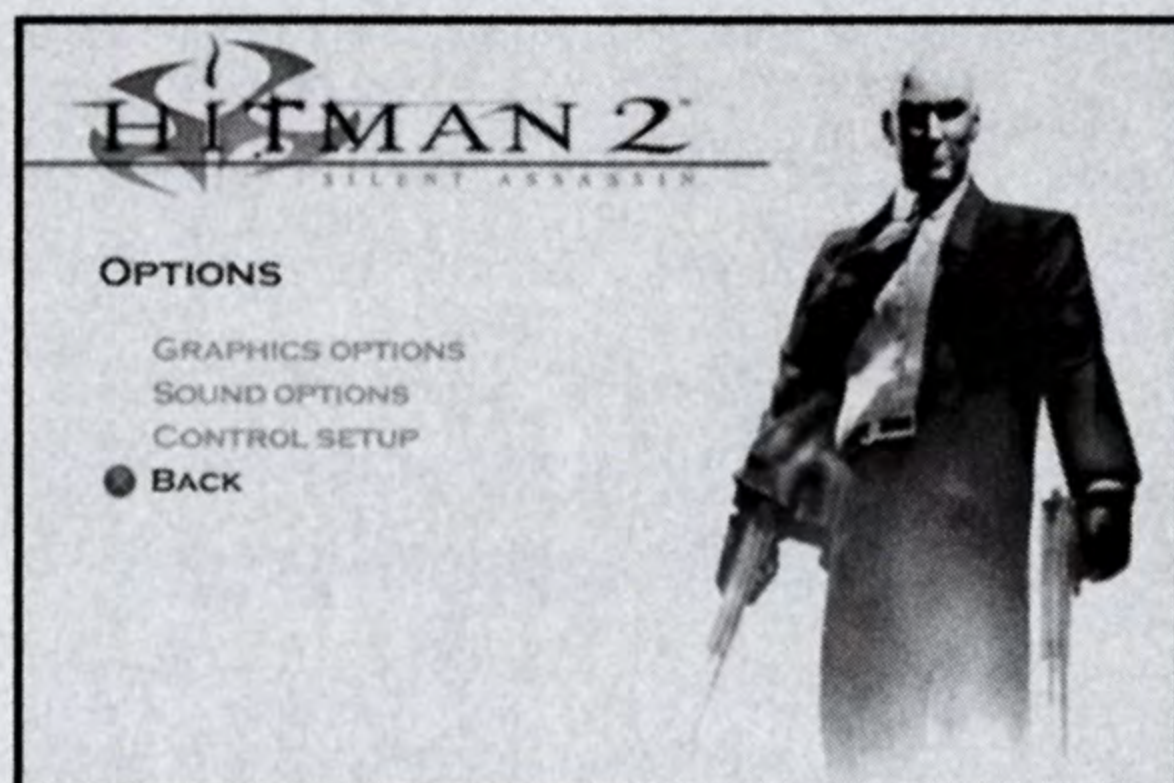


## SPECIAL ITEMS

The Agency will provide you with a range of special items such as car bombs for use on certain missions.

# OPTIONS

The options menu can be accessed from both the Main Menu and the In-game Menu. Three sub-menus are available for adjusting graphics options, sound options and game controls. Once you leave the menu by selecting BACK and pressing the  $\otimes$  button, your changes made are saved and you return to the Options menu. To discard your changes, press the  $\triangle$  button.



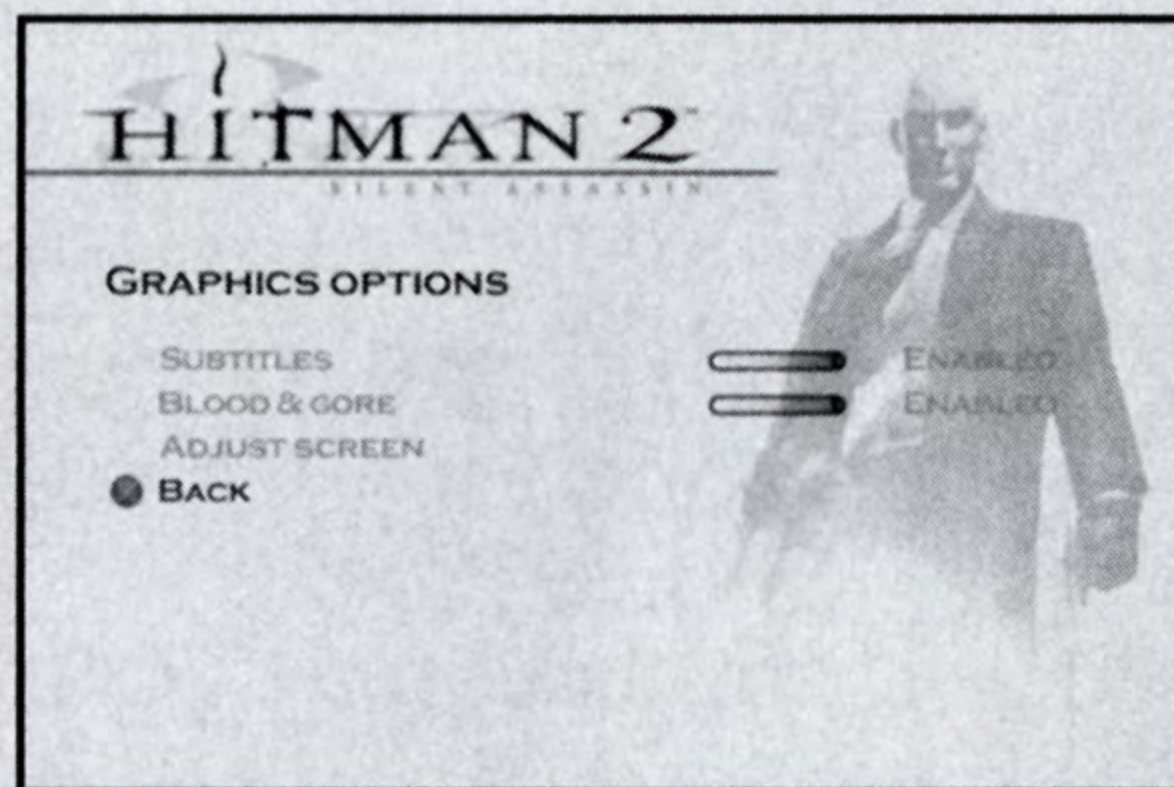
## GRAPHICS OPTIONS

Set your graphics display preferences.

**SUBTITLES** Toggle the display of subtitles during the game ON/OFF.

**BLOOD AND GORE** Toggle the display of blood effects ON/OFF.

**ADJUST SCREEN** Follow the on-screen instructions to center the playing screen on your TV. (Not available from the In-Game Options Menu.)



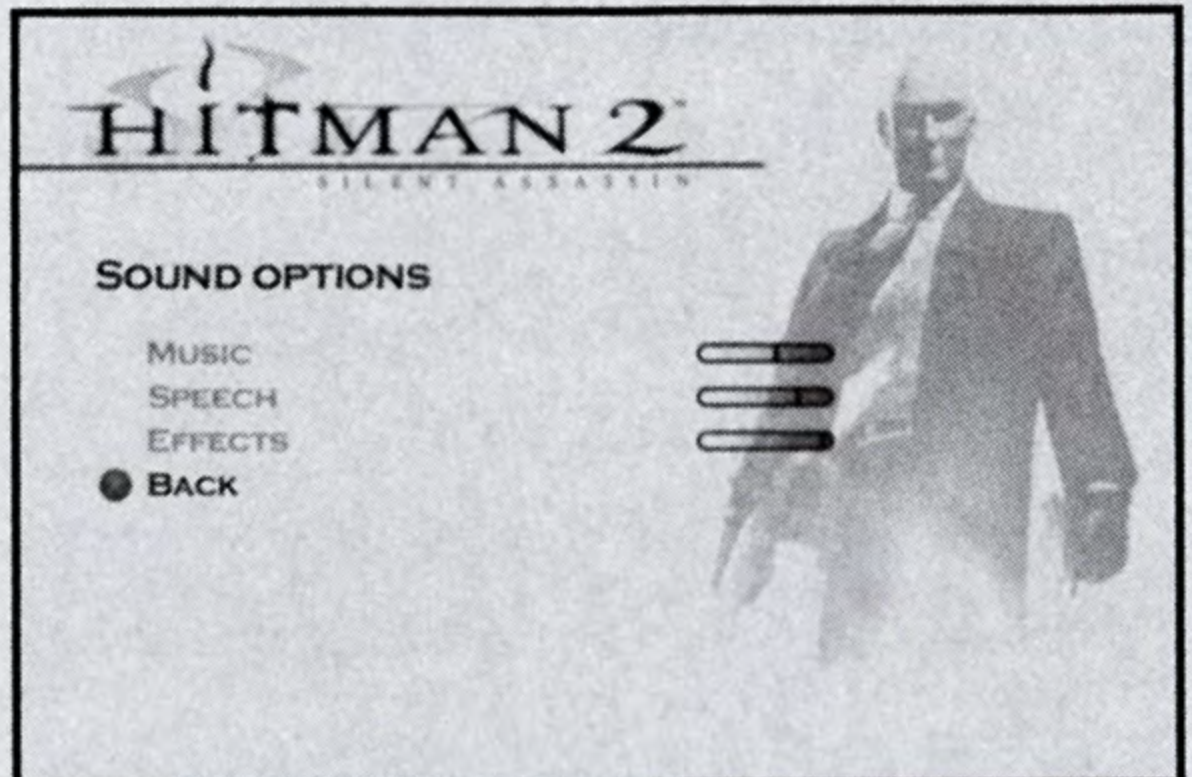
## SOUND OPTIONS

Reconfigure the sound settings by adjusting the slider.

*MUSIC* Control music volume.

*SPEECH* Control the volume of spoken dialog.

*EFFECTS* Control the volume of in-game sound effects.



## CONTROL SETUP

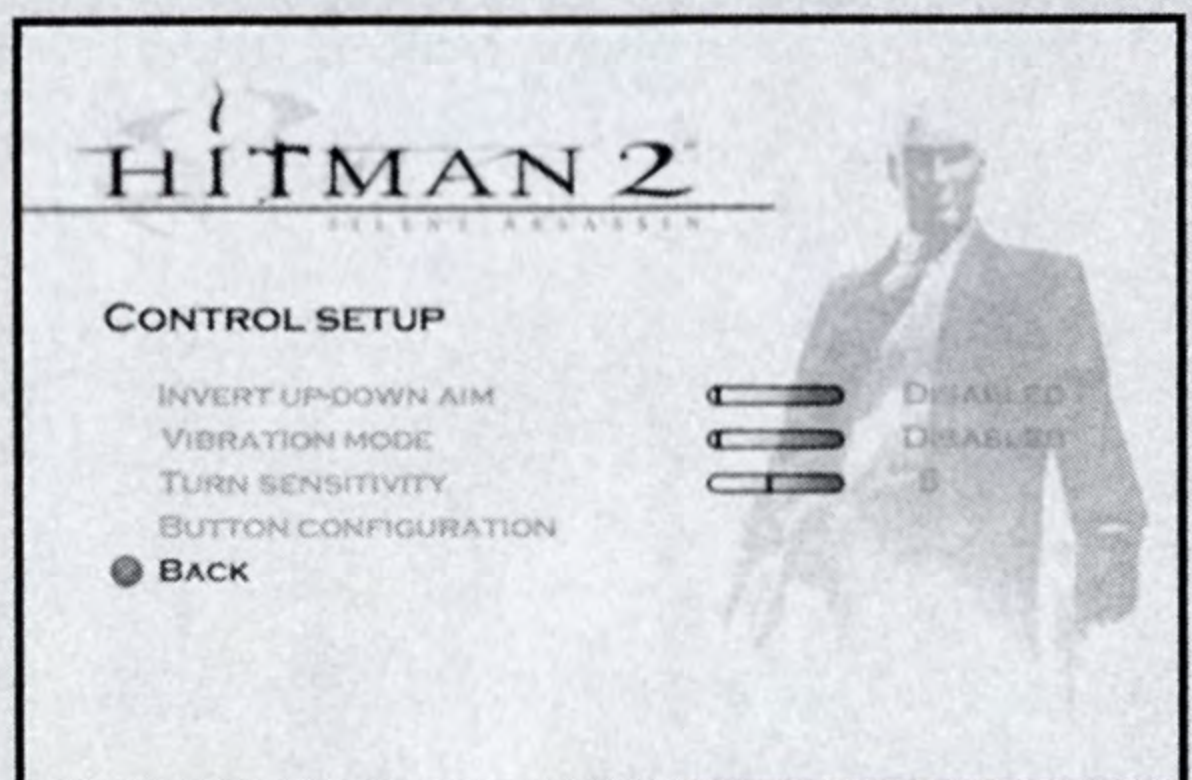
Reconfigure target acquisition and controller vibration.

*INVERT UP/DOWN AIM* Use the directional button to toggle between aiming modes.

*VIBRATION MODE* Use the directional button to toggle the vibration function of the DUALSHOCK®2 analog controller to ENABLED or DISABLED.

*TURN SENSITIVITY* Use the directional button to adjust the speed at which Hitman turns.

*BUTTON CONFIGURATION* Display a list of the game controls.



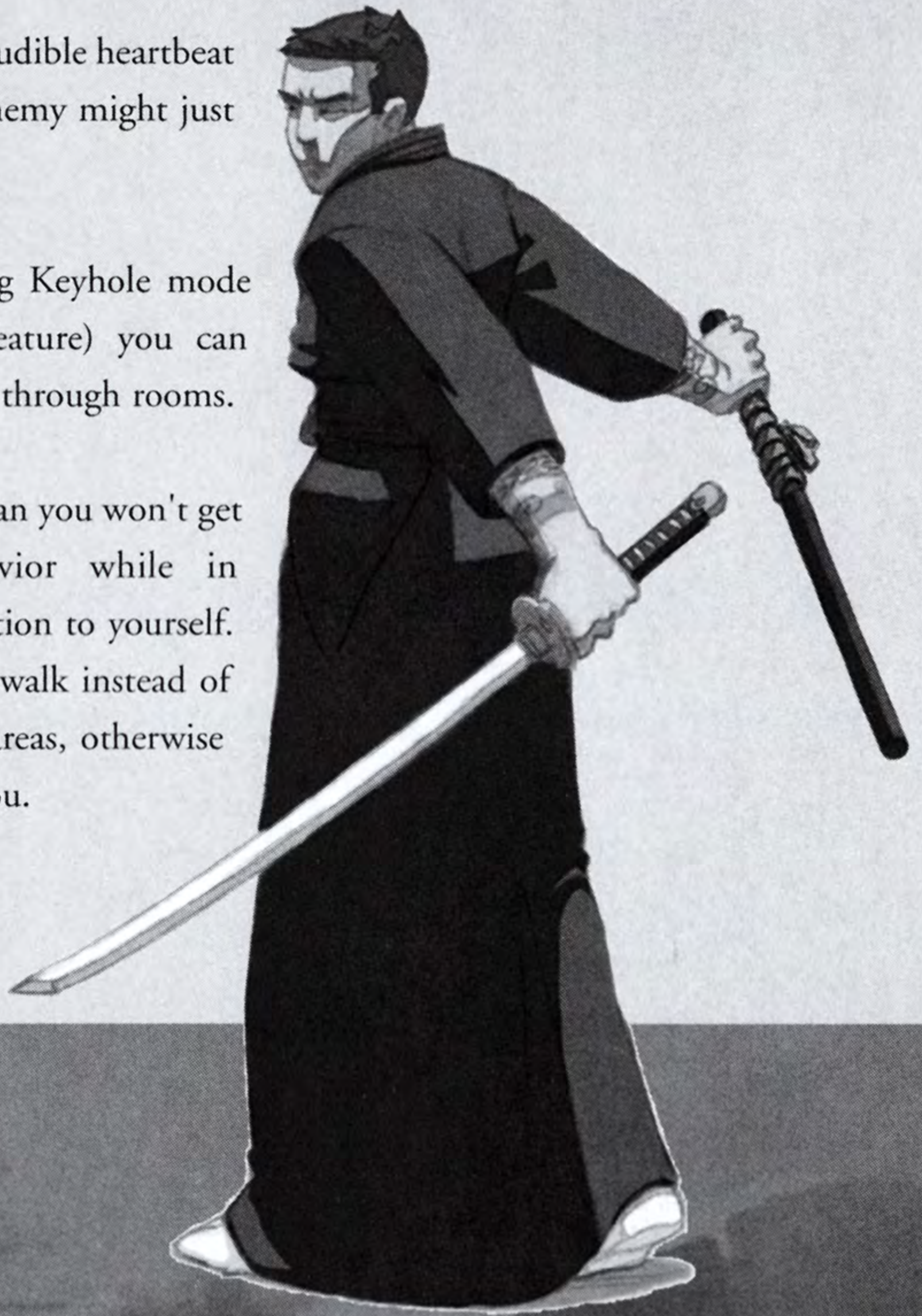
# HINTS & TIPS

- There are numerous ways to complete a mission. If your plan isn't working, try a new approach.
- It is nearly ALWAYS possible to make the hit without collateral damage. Maximize your reward by using stealth and resorting only to non-lethal weaponry when neutralizing guards and/or other obstacles when getting to your target.
- Use disguises and costume changes to throw off your pursuers and gain access to otherwise inaccessible areas.
- Bullets will pass through most doors and nearly all windows.



# HINTS & TIPS

- Pay attention to sound. An audible heartbeat is a sign of danger — the enemy might just be getting suspicious.
- By being cautious and using Keyhole mode (“look through keyhole” feature) you can further ensure a safe passage through rooms.
- Being in disguise doesn't mean you won't get spotted. Suspicious behavior while in disguise will still draw attention to yourself. Therefore, it is advisable to walk instead of run when in well-travelled areas, otherwise guards may take notice of you.



# CREDITS

## IO INTERACTIVE

### PROGRAMMERS

Bo Cordes  
Jacob Gorm Hansen  
Lars Piester  
Hakon Steinø  
Jeroen Wagenaar

### ARTISTS

Jacob Andersen  
Tobias Biehl  
Svend Christensen  
Peter Fleckenstein  
Thor Frølich  
Henrik Hansen  
Rasmus Kjær  
Peter Von Linstow  
Jesper Petersen  
Mads Prahm  
Thomas Storm

### ANIMATORS

Barbara Bernád  
Jens Peter Kurup  
Frederik Budolph

### SOUND

Martin Poulsen  
Simon Holm

### QA

Michael Andersen  
Petronela Cimpoesu  
Hugh Grimley  
Andreas Slot Vilmann

### SCRIPT

Morten Iversen

### ENGINE

#### PROGRAMMERS

Jens Bo Albretsen  
Rune Brinckmeyer  
David Guldbrandsen  
Karsten Hvidberg  
Thomas Jakobsen  
Peter Wraae Marino  
Morten Mikkelsen  
Martin Pollas  
Henning Semler  
Jens Skinnerup  
Torsten Kjær Sørensen

### MANAGEMENT

Morten Borum  
Janos Flösser  
Helle Marijnissen

### SUPPORT

Else Andersen  
Cæcilie Berg Heising  
Ulf Maagaard  
Clea Stewart

### VOICE ACTORS

Massimo Agostinelli  
Anilla Akbar  
Usman Akbar  
David Bateson  
David Berno  
Susanne Buckhardt  
Dmitri Golovanov  
Aishah Jensen  
Maasaki Kamio  
Ismail Khalid  
Radin Kasbani  
Celestino Lancia  
Vivienne McKee  
Akira Oishi  
Jeremy C. Petreman  
Arsenij Rovinskij  
Hussein Saleh  
Alexandre Savin  
Baghicha Singh Dhami  
Clea Stewart  
Katihja Sørensen  
Carsten Tode  
Manuella Vernaccini  
Ethan Weisgard  
Midoriko Weisgard  
Mocap Actors  
Klaus Hjuler  
Tina Robinson Hansen  
Bo Thomas

### MUSIC

Jesper Kyd  
([www.jesperkyd.com](http://www.jesperkyd.com) &  
[www.lynnemusic.com](http://www.lynnemusic.com))  
Budapest Radio  
Symphony Orchestra



## EIDOS INTERACTIVE U.K.

<i>PRODUCER</i>	Neil Donnell	<i>LOCALIZATION QA SUPERVISOR</i>	Marco Verneti
<i>EXECUTIVE PRODUCER</i>	Gary Moore	<i>LEAD TESTER LOCALIZATION</i>	Maike Kohler
<i>LOCALIZATION MANAGERS</i>	Paul Motion Alex Bush	<i>PROJECT TEST COORDINATOR</i>	Arnaud Messenger
<i>GROUP LOCALIZATION MANAGER</i>	Flavia Timiani	<i>LOCALIZATION TESTING</i>	Byung-Joon Samuel Kil Mickael Pesquet Matthieu Chollet Mona Spielmann Joaquin de Prado Garcia Daniel Castro Antonio Failla Dario Scimone Stefano Citi
<i>PRODUCT MANAGER</i>	Nick Segger		Jason Walker
<i>HEAD OF COMMUNICATION</i>	Steve Starvis	<i>M/C COORDINATOR</i>	Phil Spencer
<i>PR MANAGER</i>	Mark Allen	<i>MASTERING ENGINEER</i>	Ray Mullen Scott Sutherland Gordon Gram
<i>PR ASSISTANT</i>	Roxana Daneshmand	<i>COMPATIBILITY ENGINEERS</i>	Artbeats Digital Film Library
<i>QA MANAGER</i>	Chris Rowley	<i>DIGITAL IMAGES</i>	Expat Freetype Ogg Vorbis Zlib
<i>QA SUPERVISOR</i>	John Ree	<i>3rd PARTY SOFTWARE</i>	Rinat S. Rumyantsev Vladimir Gavrilo Martin Pond Pat Cowan
<i>QA ASSISTANT MANAGER</i>	Ghulam Khan	<i>SPECIAL THANKS</i>	
<i>PTC</i>	Anthony Peterken John Ree Daryl Bibby		
<i>TESTERS</i>	Adam Phillips Adam Lay Andrew Standen Gabriel Allen Jayne Whitfield Jonathon Redington Lawrence Day Marc Crouch Markus Poltorp Marlon Grant Martin Spencer Noel Cowan Phil Kelly Tyrone O'Neill Victor Tan		

# CREDITS

## EIDOS INTERACTIVE U.S.

*VP PRODUCT  
OPERATIONS*

John Miller

*PRODUCER*

Clayton Palma

*QA MANAGER*

Brian King

*ASST. QA MANAGERS*

Ryan Natale  
Colby McCracken

*QA TEAM LEAD*

Ryan Natale

*ASST. LEAD*

Beau Teora

*QA TEAM*

Dan Franklin  
Alexander Strayer  
Andrew Tulley  
Brian Falls  
Mark Gloschen  
Nick Wilson  
Nevin Chou  
Stephen Cavaretto  
James Cabot  
Jesse Andrews  
Jeffrey Lowe  
Henry Perez  
Matt Ranalli  
Erik Kennedy  
Ralph Ortiz  
Benny Ventura  
Jacob Rohrer  
Chris Bruno

*VP MARKETING*

*MARKETING DIRECTOR*

*SENIOR PRODUCT  
MANAGER*

*MEDIA & MARKETING  
COORDINATOR*

*PR MANAGER*

*PR SPECIALIST*

*PR COORDINATOR*

*PACKAGE DESIGN*

*SPECIAL THANKS*

Paul Baldwin

Chip Blundell

Kevin Gill

Wyman Jung

Michelle Seebach

Kjell Vistad

Denny Chiu

Soo Hoo Design

Rob Dyer

Kevin Weston

Kim Pendleton

Frankie Palmer

Li Shen

Denny Chiu

Greg Wu

Michael Minson

Micheal Kelly

Matt Gorman

Sean Amann

Renee Pletka

Eruch Adams

Mike Schmitt

Tom Marx

Mike Orenich

Hanshaw Ink & Image

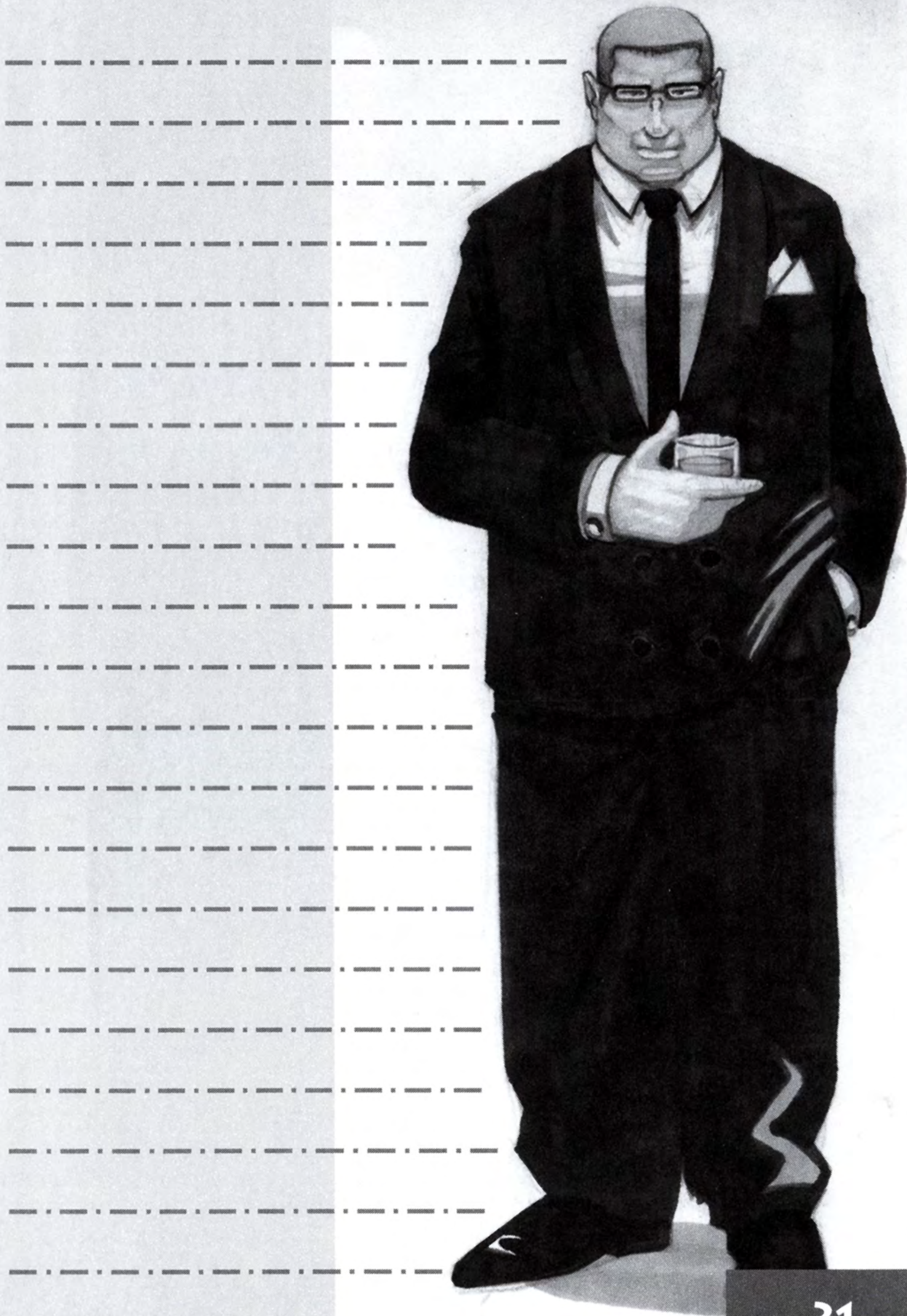
## OPEN SOURCE SOFTWARE

*Hitman 2: Silent Assassin* was built using and including several Open Source products. We hereby gratefully acknowledge the work contributed by the open source community, which has provided us with these indispensable tools.

Products included in the game:

- Expat XML Parser Toolkit ([www.expat.org](http://www.expat.org)) released under the Mozilla Public License v1.1 ([www.mozilla.org/MPL/MPL-1.1.html](http://www.mozilla.org/MPL/MPL-1.1.html))
- Freetype Font Engine ([www.freetype.org](http://www.freetype.org)) released under its own license
- Bugzilla bug tracking system ([www.mozilla.org/bugs](http://www.mozilla.org/bugs))
- Zope web application server ([www.zope.com](http://www.zope.com))





# HIT LOG



# LIMITED WARRANTY

## EIDOS INTERACTIVE LIMITED WARRANTY

EIDOS Interactive warrants to the original purchaser that this EIDOS Interactive disc is free from defects in materials and workmanship for a period of ninety (90) days from the date of purchase. This EIDOS Interactive disc is sold "as is" without expressed or implied warranty of any kind, and EIDOS Interactive is not liable for any losses or damages of any kind resulting from use of this program. EIDOS Interactive agrees for a period of ninety (90) days to either repair or replace, at its option, free of charge, any EIDOS Interactive disc, postage paid, with proof of date of purchase, at its Factory Service Center.

This limited warranty is not applicable to normal wear and tear. This limited warranty shall not be applicable and shall be void if the defect in the EIDOS Interactive disc has arisen through abuse, unreasonable use, mistreatment or neglect. This limited warranty is in lieu of all other warranties and no other representations or claims of any nature shall be binding on or obligate EIDOS Interactive. Any implied warranties of merchantability and fitness for a particular purpose are limited to the ninety (90) day period described above. In no event will EIDOS Interactive be liable for any special, incidental or consequential damages resulting from possession, use or malfunction of this disc.

Some states do not allow limitation as to how long an implied warranty lasts and/or exclusions or limitations of incidental or consequential damages, so the above limitations and/or exclusions of liability may not apply to you. This warranty gives you specific legal rights, and you may also have other rights which vary from state to state.

For warranty support please contact our Customer Support department at (415) 615-6220. Our staff is available Monday through Friday, 9:00 a.m. to 5:00 p.m. Pacific Time. You are responsible for all toll charges. **Customer Support Representatives will not provide game hints, strategies or codes.**

### PRODUCT RETURN PROCEDURE

In the event our support agents determine that your game disc is defective, you will need to forward material directly to us. Please include a brief letter explaining what is enclosed and why you are sending it to us. The agent you speak with will give you an authorization number that must be included. You will also need to include a daytime phone number so that we can contact you if necessary. **Any materials not containing this authorization number will be returned to you unprocessed and unopened.** Your postage paid package should be sent to the following address:

Eidos Interactive Customer Services  
651 Brannan Street, Suite 400  
San Francisco, CA 94107  
RMA# (include your authorization number here)

**Note: You are responsible for postage for your game to our service center.**

REGISTER YOUR GAME AT  
[www.eidosregistration.com](http://www.eidosregistration.com)

...THE MOST ACCLAIMED GAME OF THE YEAR...

"HEIR APPARENT TO GOLDENEYE"  
— ELECTRONIC GAMING MONTHLY —

"A GAME OF THE YEAR TITLE"  
— GAMING HORIZON —

"SO POLISHED, IT SHINES"  
— HBOH NATION —

"FIRST HALO, NOW THIS"  
— HBOH NATION —

"AWESOME"  
— IGN —



# TIME SPLITTERS 2™



Violence

**OUT NOW!**

FREE RADICAL EIDOS INTERACTIVE

EIDOS Interactive, Inc. 651 Brannan Street, San Francisco, CA 94107

© 2002 Free Radical Design Limited. TimeSplitters 2, Free Radical Design and associated logos are trademarks of Free Radical Design Limited. All rights reserved. Published by Eidos Interactive, Inc. Eidos, Eidos Interactive, and the Eidos Interactive logo are all registered trademarks of Eidos Interactive, Inc. ©2002 Eidos Interactive, Inc. The ratings icon is a registered trademark of the Interactive Digital Software Association. All other trademarks are the property of their respective owners.

Licensed for play on the PlayStation 2 computer entertainment systems with the NTSC U/C designation only. "PlayStation" and the "PS" Family logo are registered trademarks of Sony Computer Entertainment Inc. The ratings icon is a trademark of the Interactive Digital Software Association. Manufactured and printed in the U.S.A. THIS SOFTWARE IS COMPATIBLE WITH PLAYSTATION 2 CONSOLES WITH THE NTSC U/C DESIGNATION. U.S. AND FOREIGN PATENTS PENDING.

PHTM2SUS03