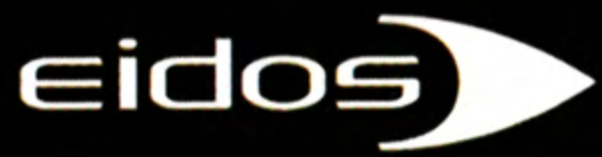
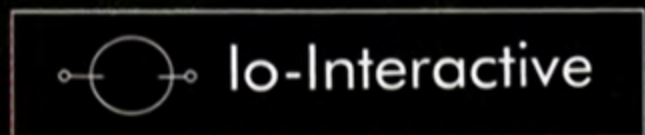
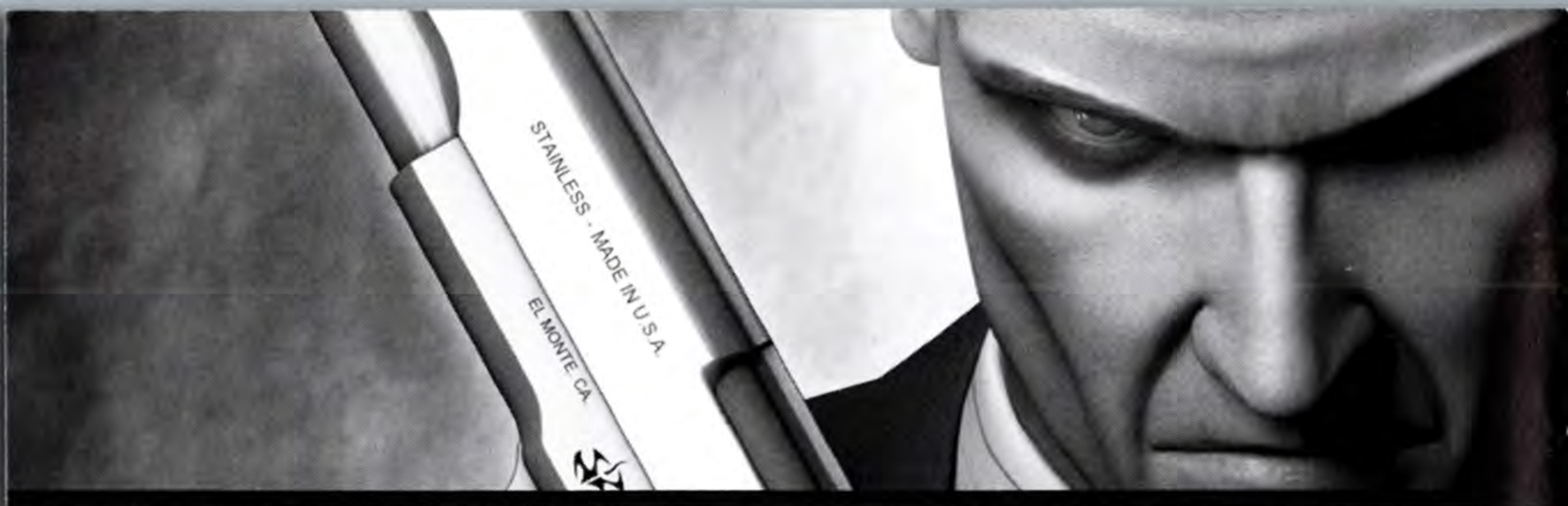


HITMAN

CONTRACTS

TM





⚠️ WARNING: PHOTSENSITIVITY/EPILEPSY/SEIZURES

READ BEFORE USING YOUR PLAYSTATION®2 COMPUTER ENTERTAINMENT SYSTEM.

A very small percentage of individuals may experience epileptic seizures or blackouts when exposed to certain light patterns or flashing lights. Exposure to certain patterns or backgrounds on a television screen or when playing video games may trigger epileptic seizures or blackouts in these individuals. These conditions may trigger previously undetected epileptic symptoms or seizures in persons who have no history of prior seizures or epilepsy. If you, or anyone in your family, has an epileptic condition or has had seizures of any kind, consult your physician before playing. IMMEDIATELY DISCONTINUE use and consult your physician before resuming gameplay if you or your child experience any of the following health problems or symptoms:

- dizziness
- altered vision
- eye or muscle twitches
- loss of awareness
- disorientation
- seizures
- any involuntary movement or convulsion

RESUME GAMEPLAY ONLY ON APPROVAL OF YOUR PHYSICIAN.

Use and handling of video games to reduce the likelihood of a seizure

- Use in a well-lit area and keep as far away as possible from the television screen.
- Avoid large screen televisions. Use the smallest television screen available.
- Avoid prolonged use of the PlayStation 2 system.
Take a 15-minute break during each hour of play.
- Avoid playing when you are tired or need sleep.

Stop using the system immediately if you experience any of the following symptoms: lightheadedness, nausea, or a sensation similar to motion sickness; discomfort or pain in the eyes, ears, hands, arms, or any other part of the body. If the condition persists, consult a doctor.

WARNING TO OWNERS OF PROJECTION TELEVISIONS:

Do not connect your PlayStation 2 system to a projection TV without first consulting the user manual for your projection TV, unless it is of the LCD type. Otherwise, it may permanently damage your TV screen.

HANDLING YOUR PLAYSTATION 2 FORMAT DISC:

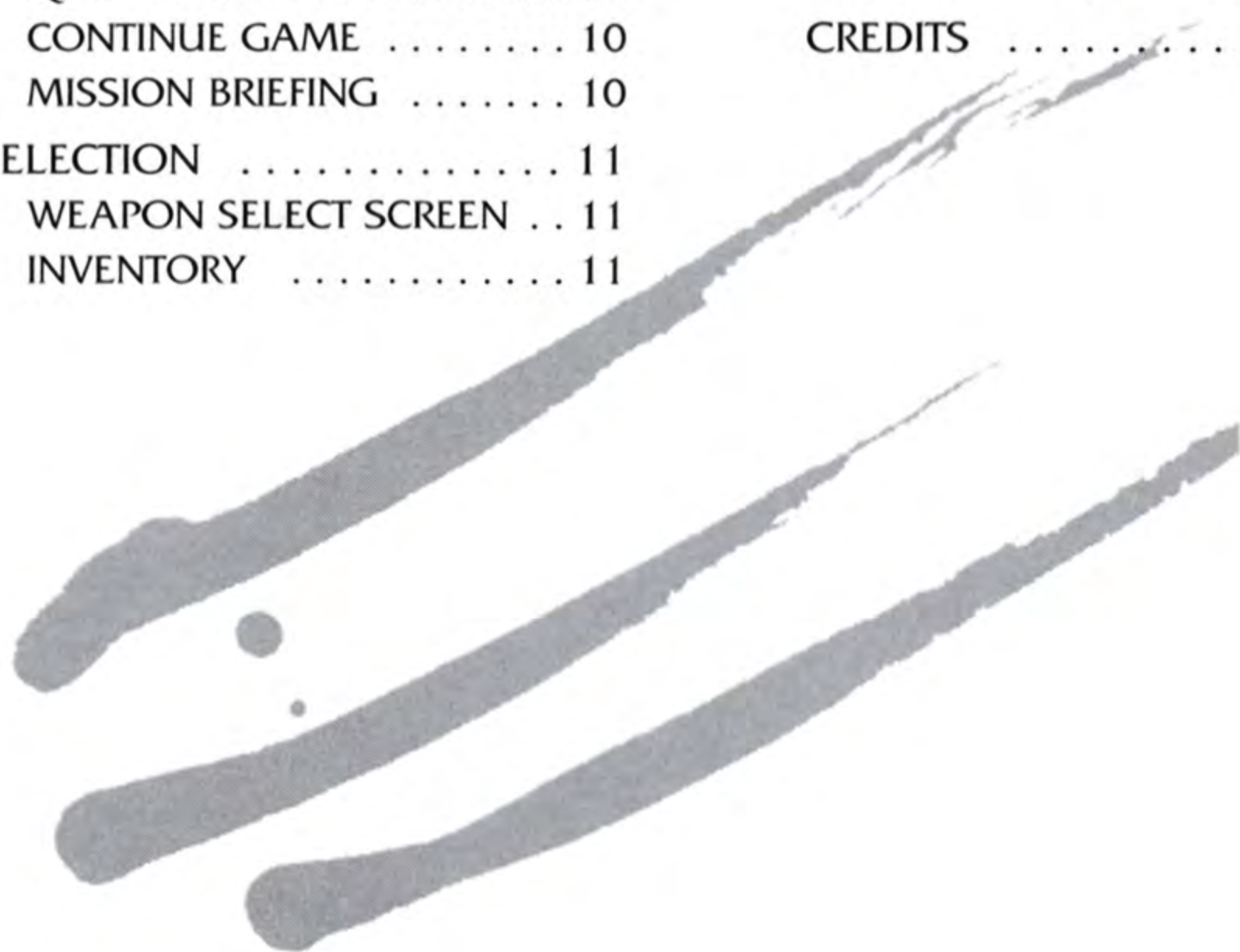
- This disc is intended for use only with PlayStation 2 consoles with the NTSC U/C designation.
- Do not bend it, crush it or submerge it in liquids.
- Do not leave it in direct sunlight or near a radiator or other source of heat.
- Be sure to take an occasional rest break during extended play.
- Keep this compact disc clean. Always hold the disc by the edges and keep it in its protective case when not in use. Clean the disc with a lint-free, soft, dry cloth, wiping in straight lines from center to outer edge. Never use solvents or abrasive cleaners.

CONTENTS



CONTENTS

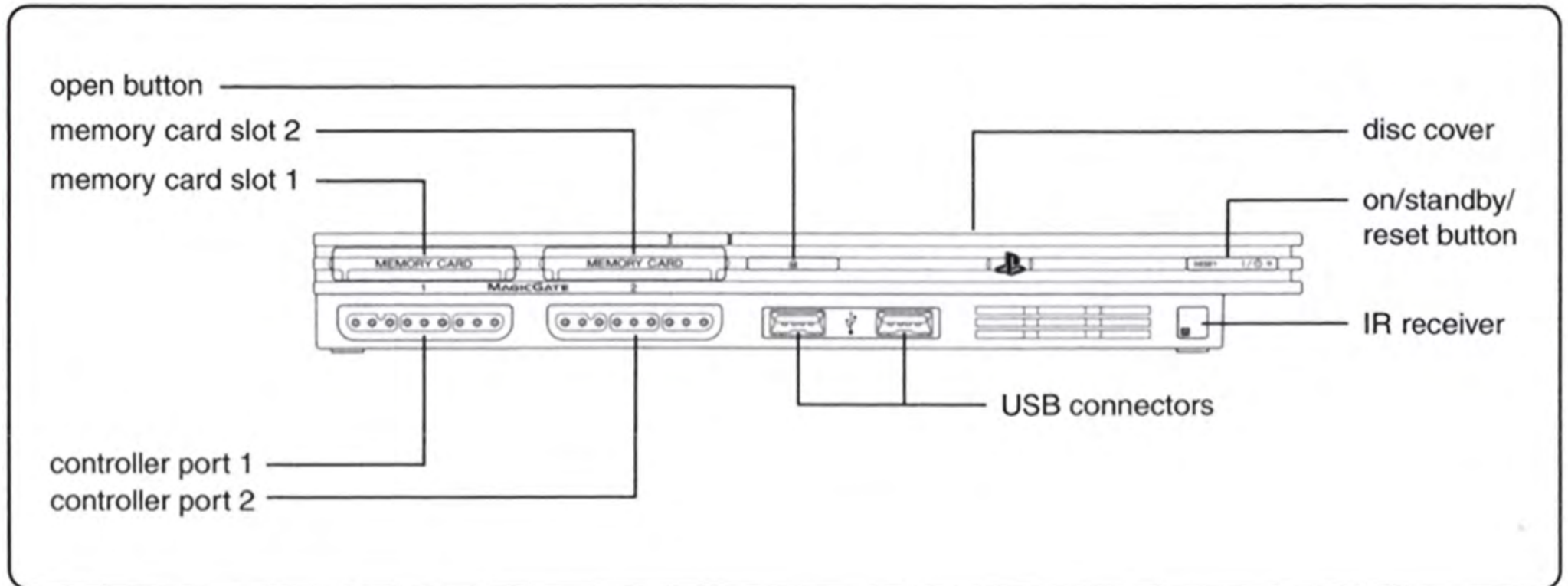
| | | | |
|--------------------------|----|-------------------------|----|
| SETTING UP | 2 | DISPLAYS | 12 |
| CONTROLLER | 3 | ON-SCREEN DISPLAY | 12 |
| GAMEPLAY | 4 | STATISTICS | 13 |
| GAMEPLAY CONTROLS | 4 | TECHNIQUES | 14 |
| MAIN MENU | 6 | DISGUISES | 14 |
| START | 6 | SNEAKING | 14 |
| OPTIONS | 6 | CLOSE COMBAT | |
| LOAD | 7 | AND SILENT KILLS | 14 |
| TRAINING | 7 | WEAPONS | 15 |
| CREDITS | 7 | PISTOLS AND | |
| OPTIONS | 8 | HANDGUNS | 15 |
| GRAPHICS OPTIONS | 8 | SUB-MACHINE GUNS | |
| SOUND OPTIONS | 8 | (SMGs) | 15 |
| CONTROL SETUP OPTIONS .. | 8 | ASSAULT RIFLES | 15 |
| IN-GAME MENU. | 9 | SHOTGUNS | 16 |
| SAVE | 9 | MACHINE GUNS | 16 |
| LOAD | 9 | SNIPER RIFLES | 16 |
| REPLAYING COMPLETED | | EQUIPMENT | 17 |
| MISSIONS | 9 | BINOCULARS | 17 |
| DELETE SAVE GAMES | 10 | MAP | 17 |
| OPTIONS | 10 | NIGHT VISION GOGGLES | |
| RESTART MISSION | 10 | (NVGs) | 17 |
| QUIT | 10 | HINTS AND TIPS | 17 |
| CONTINUE GAME | 10 | CREDITS | 18 |
| MISSION BRIEFING | 10 | | |
| SELECTION | 11 | | |
| WEAPON SELECT SCREEN .. | 11 | | |
| INVENTORY | 11 | | |



SETTING UP



SETTING UP



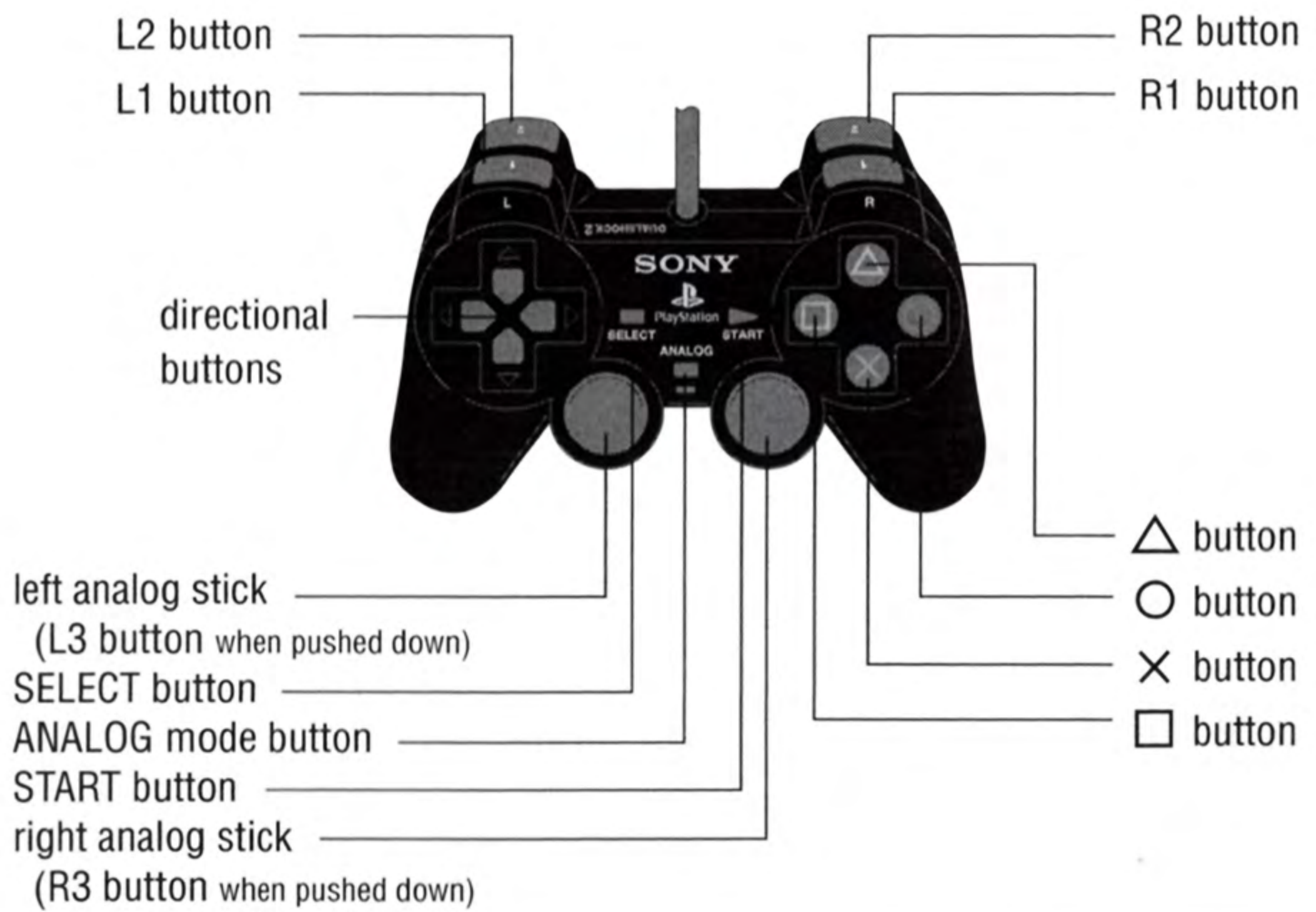
Set up your PlayStation®2 computer entertainment system according to the instructions supplied with your system. Check that the system is turned on (the on/standby indicator is green). Insert the HITMAN: CONTRACTS disc in the system with the label side facing up. Attach game controllers and other peripherals as appropriate. Follow the on-screen instructions and refer to this manual for information on using the software.

Memory Card (8MB)(for PlayStation®2)

To save game settings and progress, Insert a memory card (8MB)(for PlayStation®2) into MEMORY CARD slot 1 of your PlayStation®2 system. You can load saved game data from the same memory card or any memory card (8MB)(for PlayStation®2) containing previously saved games.

CONTROLLER

DUALSHOCK®2 ANALOG CONTROLLER CONFIGURATIONS



Before starting play, connect the DUALSHOCK®2 analog controller to controller port 1. When the Vibration function is ON, the controller will vibrate in response to game events. You can turn the Vibration function ON/OFF from the Options Menu. (See page 8.)

ACCESSORIES

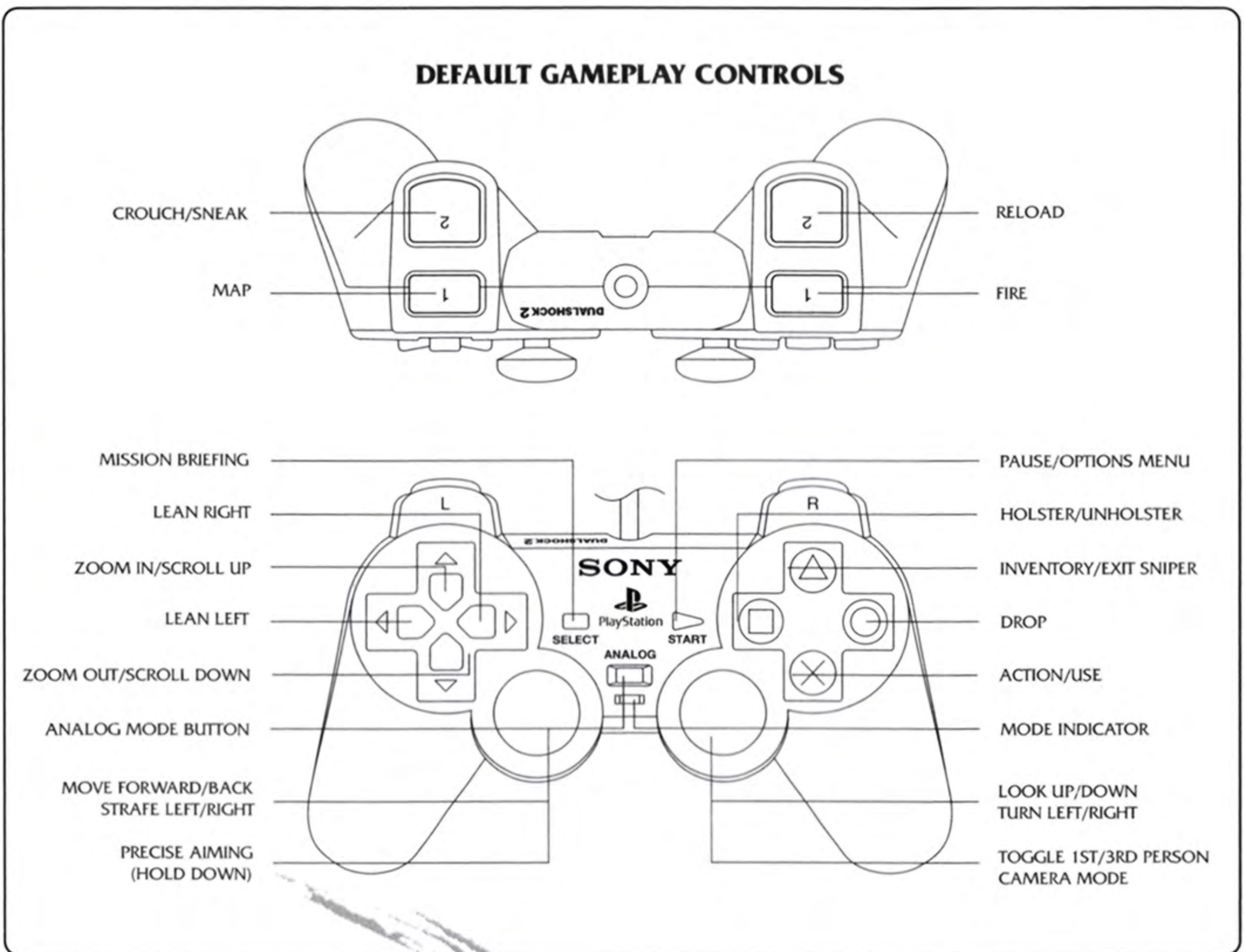
Do not insert or remove memory cards, controllers or other accessories when the PlayStation 2 is powered on.



GAMEPLAY CONTROLS

GAMEPLAY CONTROLS

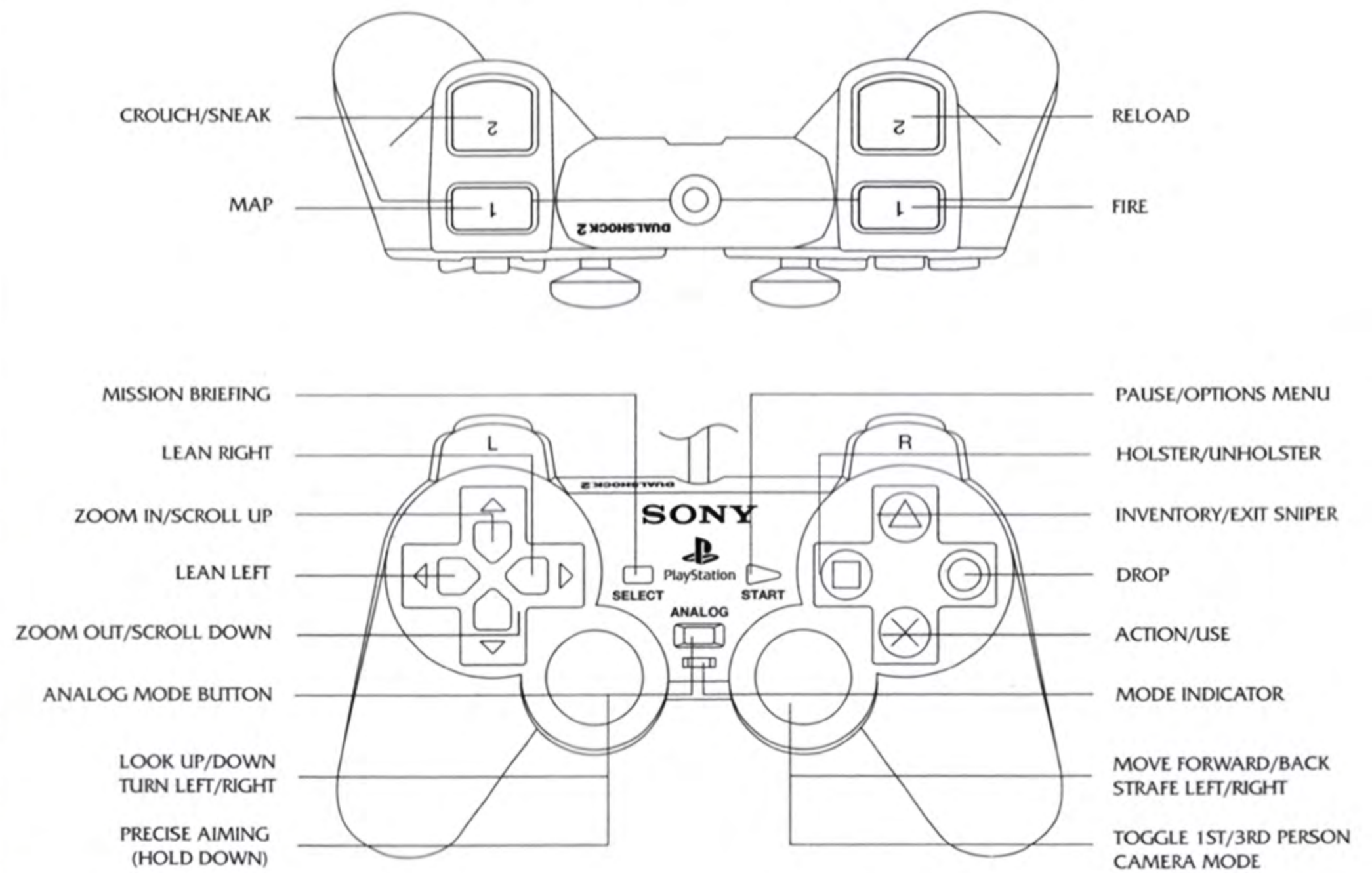
HITMAN: CONTRACTS offers you three different control schemes to select from. You can make your selection from the Control Setup Menu. (See page 8.)



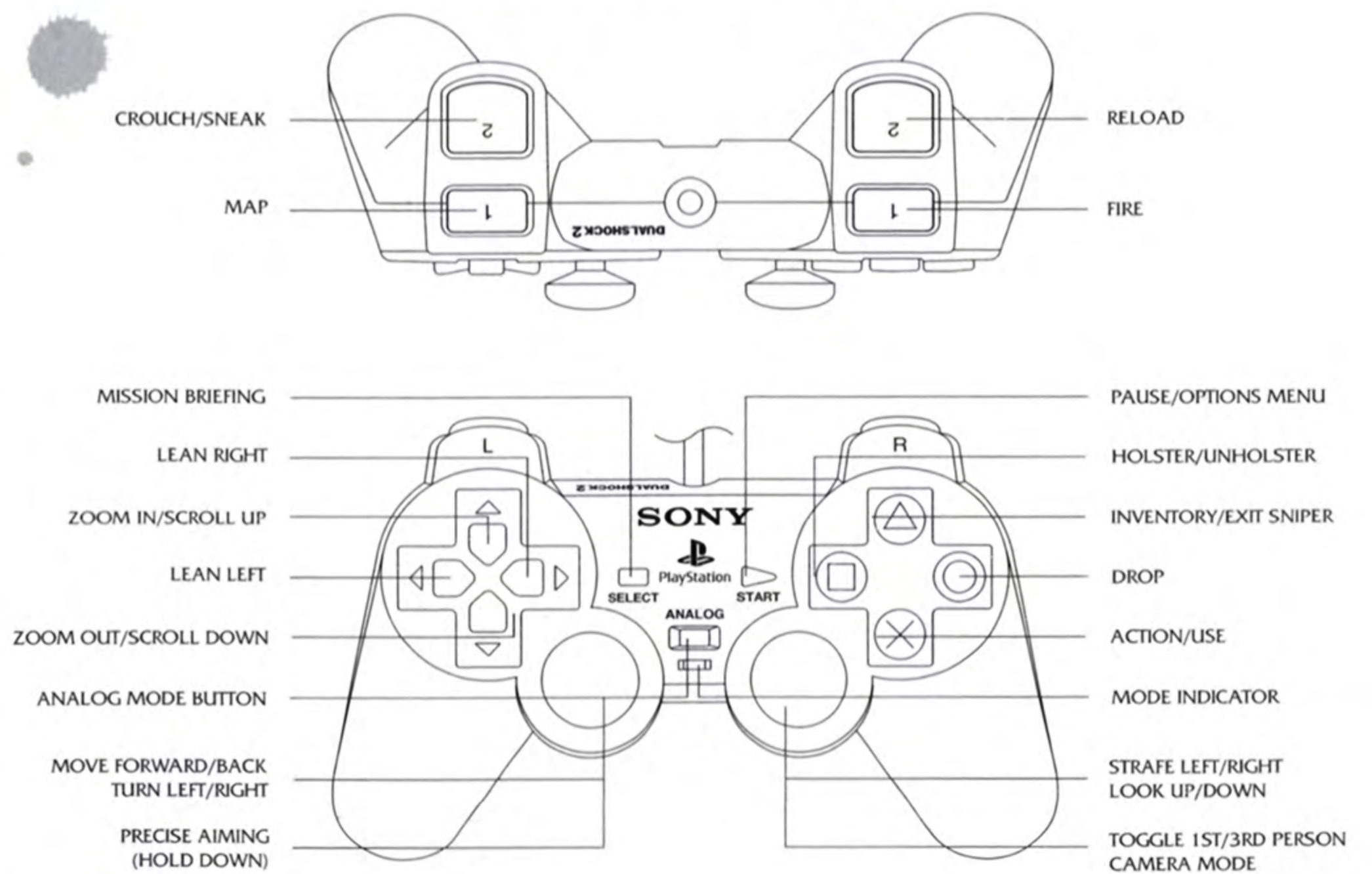


GAMEPLAY CONTROLS

LEFT-HANDED GAMEPLAY CONTROLS



SIMPLIFIED GAMEPLAY CONTROLS





START, OPTIONS



START

Press the directional buttons **↑** / **↓** to highlight START in the Main Menu, and press **⊗** to begin a new game. Before the game begins, select the difficulty level for your game.

NOTE: You MUST be using a memory card in MEMORY CARD slot 1 in order to save your progress.

A HITMAN: CONTRACTS save game requires 500Kb of free space on the memory card. If the memory card has less than the required free space, erase older data before starting play.

• SELECT DIFFICULTY

This menu allows you to select a difficulty level (Normal, Expert or Professional).

Press the directional buttons **↑** / **↓** to highlight a level from the list and press **⊗** to start your new game.

A number of different factors are influenced by the difficulty level you choose. These factors include:

- The amount of damage Hitman can receive before dying.
- The amount of accuracy shown on the map.
- The reaction speed and firing accuracy of guards and targets.

Each difficulty level has its own permitted number of progress saves per mission.

- NORMAL – 7 saves allowed per level.
- EXPERT – 2 saves allowed per level.
- PROFESSIONAL – 0 saves allowed per level.

OPTIONS

Adjust various graphics, sound and control settings in the game. (See page 8.)

TRAINING



LOAD, TRAINING, CREDITS

LOAD

If you previously saved your game to a memory card, you can continue it from the Load Screen accessed from the Main Menu.

Insert a memory card containing HITMAN: CONTRACTS save game data into MEMORY CARD slot 1.

Then, when you select LOAD from the Main Menu, a list of your save games will be displayed.

Press the directional buttons **↑** / **↓** to highlight the save game you want and press **⊗** to load it. The game will be restored at the point where it was saved.

TRAINING


The training area allows you to become familiar with the controls and various abilities of Hitman in a non-hostile environment. It is highly recommended that you practice the techniques you will need before starting your missions.

The training area also serves as a storage area for the weapons you collect during missions. Each silhouette represents a weapon that you can collect or unlock during the game.

CREDITS

Select CREDITS from the Main Menu to see a roster of those responsible for HITMAN: CONTRACTS.



To open the Options Menu, select **OPTIONS** from the Main Menu or press  to pause a game and select **OPTIONS** from the Pause Menu.

Three sub-menus are available with options for adjusting the game's Graphics, Sound and Control Setup.

GRAPHICS OPTIONS

Use this menu to set your graphics and display choices.

- **SUBTITLES:** Toggle the display of in-game subtitles.
- **BLOOD AND GORE:** Toggle the display of blood effects.
- **ADJUST SCREEN:** Follow the onscreen instructions to center the screen for better viewing.

NOTE: The **ADJUST SCREEN** option is only available from the Main Menu Options Menu.

SOUND OPTIONS

Use this menu to configure sound and audio settings:

- **MUSIC:** Move the slider to adjust the game's music volume.
- **SPEECH:** Move the slider to adjust the volume of spoken dialogue.
- **EFFECTS:** Move the slider to adjust the volume of in-game sound effects.

CONTROL SETUP OPTIONS


Use this menu to configure various control settings:

- **INVERT UP/DOWN AIM:** Changing this option switches the movement control on the Y axis. If you find yourself looking down at the floor when you want look up, try adjusting this setting.
- **VIBRATION FUNCTION:** Toggle the controller's vibration function **ON/OFF**. (When **ON**, the controller will vibrate in response to game events.)
- **HORIZONTAL TURN SENSITIVITY:** Move the slider to adjust Hitman's turning speed. To turn faster, use a higher setting.
- **VERTICAL TURN SENSITIVITY:** This slider will adjust the speed with which Hitman looks up and down. Use a higher setting to speed up the response.
- **BUTTON CONFIGURATION:** Choose between three control schemes. (See pages 4-5.)



IN-GAME MENU





Press  during play to pause the game and access the In-Game Menu, which offers the following options:

SAVE

While playing HITMAN: CONTRACTS, you'll want to save your game often to preserve your progress.

To save a game:


1. Press  to pause the game.
2. Select SAVE from the menu.
3. Highlight CREATE NEW to create a new save game or highlight a save game to overwrite, and press .
4. If your memory card is unformatted, you will now have the option to format it or exit the save process.
5. To resume a saved game, follow the steps in LOAD below.

NOTE: You cannot save your game while performing some complicated actions.

LOAD

You can resume save games by using the LOAD option from either the Main Menu or the In-Game Menu.

Make sure you have a memory card containing HITMAN: CONTRACTS save game data inserted into MEMORY CARD slot 1. When you select LOAD, a list of available save games is displayed.

Highlight a save game and press  to load it. The game will be restored at the point where it was saved.

REPLAYING COMPLETED MISSIONS

To re-play missions you have completed:

1. Load your most recently created saved game.
2. Once you're into the saved game, quit back to the Main Menu.
3. Select START and then CURRENT GAME.
4. You will see a list of all the missions you've completed. Choose a mission, select your weapons and begin.

NOTE: Only weapons you have in your Inventory when you end a mission will be added to your weapon list.



IN-GAME MENU

DELETE SAVE GAMES

You can delete save games by using the DELETE SAVE GAMES option in the In-Game Menu. Highlight the save game you want to delete and press **X**.

OPTIONS

Highlight this option and press **X** to access the Options Menu. Options available in this menu are the same as those found in the Main Menu Options Menu. (See page 8.)

RESTART MISSION

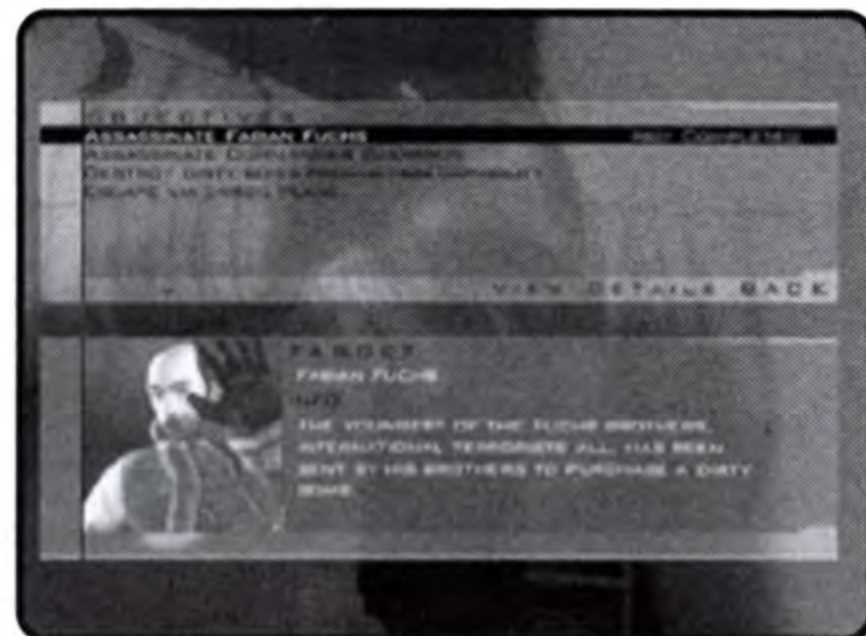
To restart the current mission, highlight this option and press **X**.

QUIT

Highlight this option and press **X** to quit the current game and return to the Main Menu.

CONTINUE GAME

Highlight this option and press **X** to exit the In-Game Menu and resume the current game.



MISSION BRIEFING

When Hitman receives a mission from Agency, the details are always delivered through the Mission Briefing Screens. All information valid to the mission is stored in this briefing, which you can display at any point during a mission.

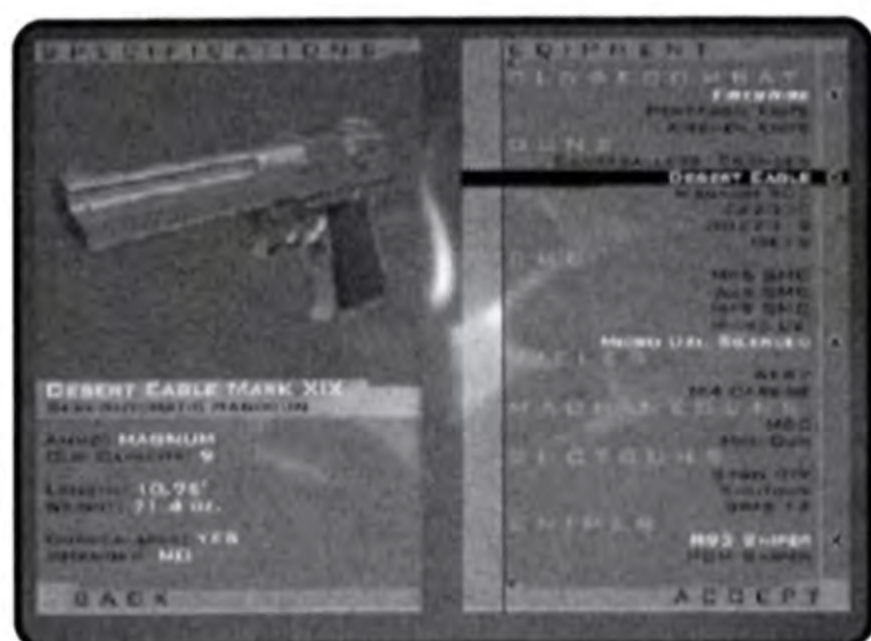
The following information is usually available from the Briefing Screen:

- Target profiles and descriptions.
- Any additional mission objectives.
- Background information on the mission scenario.
- Escape and exit points.

Once an objective has been met, it will be marked off as completed.



WEAPON AND ITEM SELECTION



WEAPON SELECT SCREEN

Once you complete a mission successfully, you can replay it with the weapons you've collected in previous missions. These weapons are selectable from the Weapon Select Screen.

• EQUIPMENT

This shows a list of weapons and equipment you can take along for the mission ahead. Highlight the item you want to equip and press **X** to add it to your Inventory.

- When a weapon is equipped, it will be marked with a cross.
- To deselect a weapon, select it again by pressing **X**.

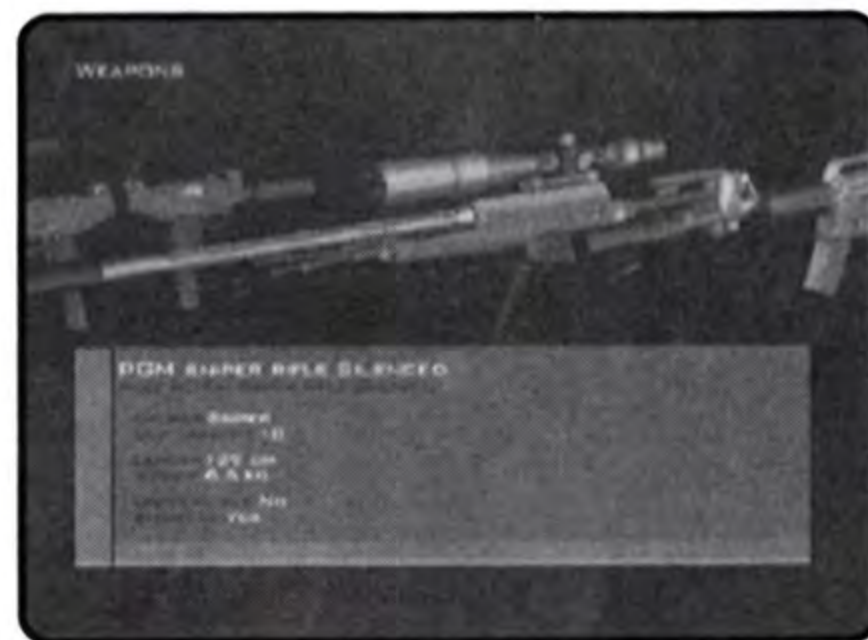
• SPECIFICATIONS

This displays the weapons specifications. The information detailed here can include ammo type, caliber, clip capacity, length, weight and storage.

• WEAPON DISPLAY

An image of the currently selected item appears at the top of the Specifications window.

Press **○** confirm your selection and exit this screen.



INVENTORY

Press **△** at any time during a mission to display the Inventory. This menu allows fast access to the Weapons and Item Inventory.

To use an item from the Inventory, highlight the item and press **X** to equip it.

To discard or drop an item, highlight it and press **○**. Detailed information on both weapons and items appears at the bottom of the screen.

NOTE: You cannot drop or discard items that are crucial to Hitman's progress.



ON-SCREEN DISPLAY



ON-SCREEN DISPLAY

• HEALTH BAR

This bar shows Hitman's current health. Every time Hitman sustains damage the bar decreases.

If the bar dips to the danger point, below 25% capacity, it turns red to alert you to Hitman's predicament.

NOTE: Damage is location-based. This means a shot to the head is almost certain to kill Hitman while a shot to the arm will not.

• THREAT METER

Displayed next to the Health Bar, the Threat Meter gives an indication of the danger Hitman faces.

An increase in movement signifies an increase in danger. The meter can alert you to potential problems such as a failed disguise or Hitman being spotted in restricted access zones.

• ACTION LIST

This Action List displays a list of context-sensitive choices. Use this menu to control complex interactions in the game environment. With its options you can manipulate doors, victims, vehicles and items.

If only one choice appears on the list, press **X** to perform that action. If you have multiple choices, hold down **X** and press the directional buttons **↑** / **↓** to highlight the option you want. Release **X** to perform the selected action.

DISPLAYS



STATISTICS

• WEAPON DISPLAY

Displayed in the bottom right corner of the screen, the Weapons Display shows an icon of the currently equipped weapon.

• AMMO DISPLAY

This is a graphical and numerical display of the current ammo level in both the clip currently in the weapon and the total bullet count for all remaining clips.

• CROSSHAIRS

The crosshairs represent the exact point at which Hitman is aiming. The size of the crosshairs indicates the accuracy of any shots fired from the currently equipped weapon.

The larger the crosshairs the wider the grouping of any shots fired. When the crosshairs turn red, Hitman has targeted an enemy and any shots fired should always hit the target.

• INFORMATION BOX

Useful information and warnings are displayed here.



STATISTICS

After a successful hit and the fulfillment of all mission objectives, a ratings screen is displayed to show performance levels. The statistics are presented as a mission and overall score and give a breakdown of the stealth and aggression levels used in the mission.

NOTE: You can earn bonuses by completing missions with a high level of professionalism.



DISGUISES



You can use disguises and costume changes to throw off pursuers and gain access to restricted areas. When you're wearing a disguise, it is important that you perform actions natural to the character you're impersonating. Alert guards and soldiers will notice suspicious behavior and inconsistent weapon usage.

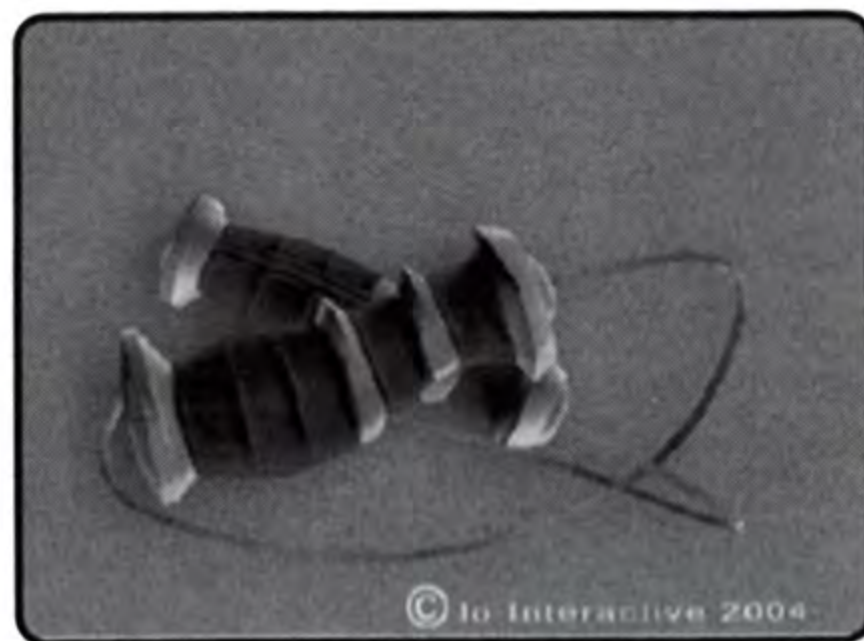
SNEAKING



The ability to successfully sneak through areas undetected is a very important skill to master. When he's moving in Sneak Mode, Hitman's movement is completely silent. With patience and skill it is possible

to sneak through almost any environment and creep up behind any enemy. Before entering rooms that potentially contain a threat, it is always worth your time to spy through the keyhole or check your map for activity.

CLOSE COMBAT AND SILENT KILLS



Hitman's most powerful weapons are also the most difficult to master. Close combat weapons allow Hitman to neutralize targets without raising alarms or creating unwanted noise.

Close combat weapons are most effective when used from behind on an unsuspecting enemy. In order to get close enough to use the weapons successfully, Hitman must use sneaking techniques. Once he's directly behind an enemy, the fully charged close combat weapons will deliver a fatal blow.

Close combat weapons can also be used in melee attacks but their effectiveness is seriously reduced.



PISTOLS AND HANDGUNS



Pistols and handguns offer a wide range of power, capacity and caliber. Easily concealed and once silenced, the pistol can be one of the most effective tools in Hitman's arsenal. When used in both hands, pistols pack a high level of firepower. Clip capacity and accuracy over distance are the main drawbacks for the handgun class.

SUB-MACHINE GUNS (SMGs)



Typically issued to commando forces in the military, sub-machine guns are small, lightweight and often use pistol ammunition. Designed for use

in close quarters, SMGs are often inaccurate. This is more than compensated for by their high rate of fire and maneuverability.

ASSAULT RIFLES



The military-designed assault rifles were developed for fire support and combat over distances of up to 300m. The rifle is in its element when used outdoors and over distance. Single shot and burst fire are a necessity if you want to maintain accuracy.

WEAPONS



WEAPONS

SHOTGUNS



Devastatingly powerful at close range, the shotgun's defining characteristics are having a smooth bore and firing "shot" from an explosive cartridge. Designed for close combat situations, the shotgun is mainly used by law enforcement agencies and as a hunting weapon.

MACHINE GUNS



Fully automatic, low-caliber and capable of rapid fire, the machine gun is designed to provide suppressing cover fire more than aim and accuracy.

SNIPER RIFLES



In the hands of trained professionals, the sniper rifle is perhaps the most powerful of all projectile weapons. Offering precision and accuracy over long distances, this weapon can be used to eliminate targets from a safe position.

The W2000 Sniper Rifle is Hitman's rifle of choice and comes silenced and concealable in its own briefcase.

NOTE: Crouching while aiming improves the accuracy and reduces the movement of the rifle in Hitman's hands.

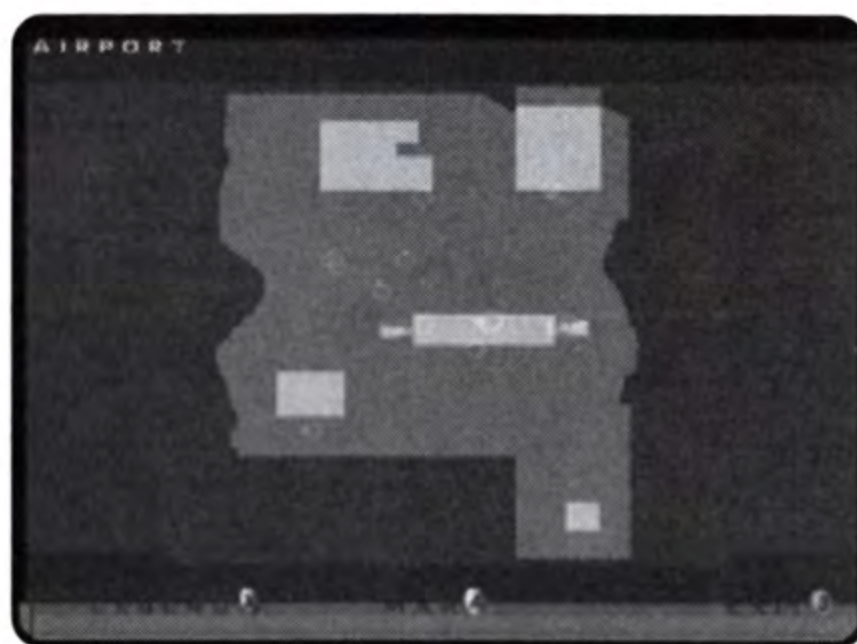


BINOCULARS



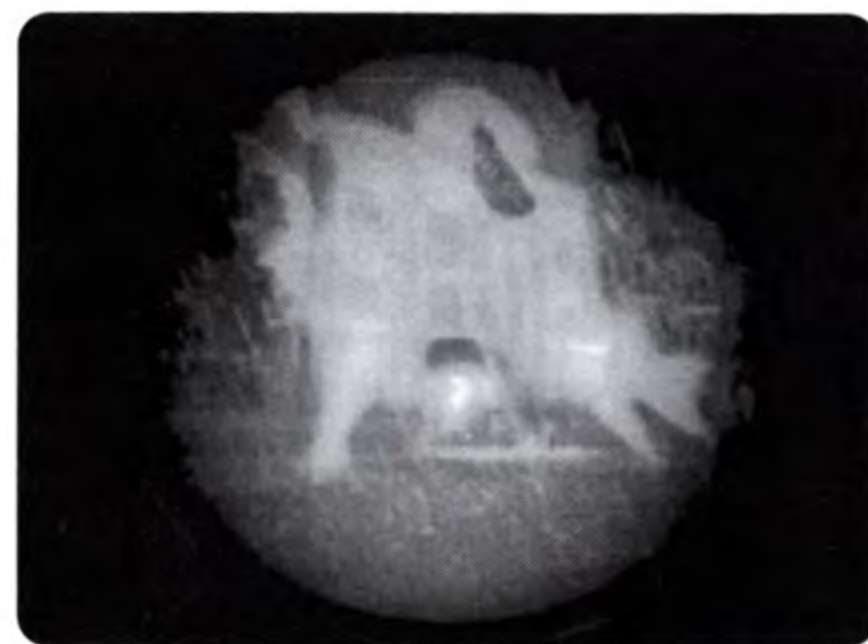
Excellent for surveillance and spying on targets from a distance.

MAP



Hitman is equipped with a map of his surroundings at all times. Using the map to plan your route can prevent unwanted surprises and will often reveal hidden access points.

NIGHT VISION GOGGLES (NVGs)



When worn in a dark environment, night vision goggles amplify the light levels, allowing you to navigate through darkened areas. Normally confined to military use, the NVGs will draw suspicion if noticed by guards or civilians.

HINTS AND TIPS

- Proper planning always increases the chance of making a successful hit. Spend time on surveillance and try changing your approach if your current plan isn't working.
- High-caliber ammunition will penetrate doors and obstacles.
- Sound is Hitman's friend. Loud music can often mask the sound of gunshots, allowing the use of firearms to go unnoticed.
- Keep your eye on the Threat Meter when accessing areas that are out of bounds.

CREDITS



CREDITS



Io-Interactive

PROGRAMMERS

Asger Mangaard
Bo Cordes
Brian Meidell Andersen
David Guldbrandsen
Hakon Steinø
Jens Bo Albretsen
Jeroen M. Wagenaar
Lars Piester
Marcell Baranyai
Martin Amor
Peter Wraae Marino
Pèter Málnai
Rune Brinckmeyer
Sándor Nyako
Torsten Kjær Sørensen

SCRIPTERS

Jacob Mikkelsen
Jesper Donniss
Jonas Lind

ADDITIONAL PROGRAMMERS

Jørgen Larsen
Rasmus Sigsgaard

ARTISTS

Allan Hansen
Asi Siemenshaus
Balázs Kiss
Bo Heidelberg
Daniel Windfeld Schmidt
David Giraud
Henrik Hansen
Israfil Abainza
Jacob Andersen
Jamie Benson
Jesper Vorsholt Jørgensen
Jørgen Ørberg
Lukas Jevcak
Mads H. Peitersen
Marek Bogdan
Martin Kramme Guldbæk
Michal Bendtsen
Miklos Büte

Morten Christian Bramsen
Peter Fleckenstein Andersen
Peter Eide Paulsen
Peter von Linstow
Rasmus Højengaard
Rasmus Kjær
Sebastian Lindoff
Stephan Nilsson
Svend Christensen
Søren B. Jensen
Thomas Storm
Thor Frölich
Tom Isaksen

ADDITIONAL ARTISTS

Jeremy C. Petreman
Michael Heilemann
Oskar Lundqvist
Riana Møller
Timothy Evison
Tobias Biehl
Tore Blystad
Trey Turner

ANIMATORS

Barbara Bernád
Frederik Budolph Larsen
Gabor Horvath
Jens Peter Kurup
Kim Zoll
Martin Poulsen

ADDITIONAL ANIMATORS

Frederic Poirier
Karsten Lund
Thomas P. Theede

SOUND

Ivan Brandt
Michael Ziegler
Simon Holm
Thomas Pedersen

QA

Hugh Grimley
Jakob Rød

CREDITS



CREDITS

Klavs Kofod
Kristian Rise
Oliver Winding
Petronela Cimpoesu

PROJECT COORDINATOR
Helle Marijnissen

SCRIPT
Greg Nagan

MUSIC COMPOSED & PRODUCED BY
Jesper Kyd www.jesperkyd.com

ADDITIONAL SOUND DESIGN BY
Jun Mizumachi

ENGINE PROGRAMMERS
Henning Semler
Jon Rocatis
Karsten Hvidberg
Martin Pollas
Mircea Marghidanu
Morten Mikkelsen

ADDITIONAL ENGINE PROGRAMMERS
Jens Skinnerup
Michael Bach Jensen
Steffen Toksvig
Thomas Jacobsen
Andreas Thomsen

IOI MANAGEMENT
Janos Fløsser
Morten Borum
Thomas Howalt

SUPPORT
Anni G. Andersen
Charlotte Delran
Chris Edgar
Christoffer Kay
Daniel Fløsser
Else Andersen
Fredrik Ax
Martin Schröder
Michael Andersen

Niels Jørgensen
Rune Nielsen
Søren Reinhold Jensen
Ulf Maagaard
Ulla Goldberg

VOICE ACTORS
Andrew Thomson
Barbara Bernád
Betty Glosted
Chun Hou Cheung
David Bateson
Francois Erik-Grodin
Gabor Horvath
Jean Claude Flamant
Jennifer Xiao Bao Huang
Joost Alexander Van Der Berg
Michael Booth
Mircea Marghidanu
Muk Wing Cheung
Nikolaj PapaDuke
Noah Lazarus
Ovidio Romanescu
Peter Málnai
Petronela Cimpoesu
Róbert Nagy
Runi Lewerissa
San Tai Cheung
Scott Farrell Strichen
Sue Hansen Styles
Thomas Chaanhing
Ulle Bjørn Bengtsson
Vivienne McKee
Vladimir Pintchevski

MOCAP ACTORS
Bo Thomas
Maria Erwolter
Tina Robinson Hansen

CREDITS



CREDITS



SENIOR PRODUCER
Neil Donnell

EXECUTIVE PRODUCER
Ed Bainbridge

PRODUCER
Clayton Palma

DIRECTOR OF PRODUCT OPERATIONS
Kathy Schoback

PRODUCT OPERATIONS MANAGER
Brian King

QA/CS MANAGER
Micheal R. Kelly

QA ASSISTANT MANAGER
Colby McCracken

PTC
Stephen Cavoretto

QA
Daniel Franklin
Kari Hattner
Kip Ernst
Patrick Goodspeed
Julian Mehlfeld
Jordan Romaidis
Christopher Bruno
Benny Ventura
Dave Baker
Eric Masyk
Gregg Stephens
Joe Quadara
Patrick Connor

CUSTOMER SUPPORT SUPERVISOR
Scott Holbert

CUSTOMER SUPPORT AGENTS
Adam Braswell
Shelley Porter

VP MARKETING
Paul Baldwin

BRAND DIRECTOR
Chip Blundell

BRAND MANAGER
Matt Knoles

MARKETING COORDINATOR
Wyman Jung

PR MANAGER
Michelle Seebach-Curran

SENIOR PR SPECIALIST
Kjell Vistad

PR COORDINATORS
Denny Chiu
Loretta Stevens

DIRECTOR OF CHANNEL AND
INTERACTIVE MARKETING
Kim Pendleton

CREATIVE
Julie Leibowitz

WEB SUPPORT
Boon Khoo
Roderick van Gelder

PRODUCTION
Michael Minson
Greg Wu

SPECIAL THANKS
Rob Dyer
Kevin Weston
Christian Chatterjee
Jamie Bartolomei
Paula Cook
Dan Johnson
Sharon Gamble
Kevin Gill
Renee Pletka
Matt Gorman
Janty Sumimoto
Sam Tehrani
Tom Marx
Mike Schmitt
Mike Orenich
Robert Fitzpatrick
Hanshaw Ink & Image
Eclipse Advertising, Inc.



MUSIC

“Le Souteneur (Mr Claude)”
(R. Mussard / R. Mussard).
©1999 Editions Chroniques
de Mars / EMI Virgin Music
Publishing France.
Avec l'autorisation d'Emi
Music Publishing France.

“Brand New Image”
Performed by Cecilia
Cheung.
Courtesy of Universal Music
Hong Kong.
Licensed by Kind
permission from the Film &
TV Licensing Division, Part
Of The Universal Music Group.

“Walking Dead”
Performed
by Puressence.
Courtesy of Universal-Island
Records Ltd.
Licensed by Kind
permission from the Film &
TV Licensing Division, Part
Of The Universal Music Group.

“Immortal” (Fallon / West)
Performed by Clutch
Published by Rykomusic Inc
(ASCAP) / Earl Music Co.
(ASCAP)
Taken from the CD “Pure
Rock Fury” Atlantic 7567-
83433-5 (2001).

“Put Your Head on my
Shoulder”
Performed by
Paul Anka.
Licensed courtesy of BMG
UK & Ireland Ltd.
Written by Paul Anka.
Published by ChrysalisMusic Ltd.

Wewe - Happy Day
Original Title: Festival
Original Author:
Chu, Young Hoon
Sub Author: Lin Min
Original Publisher: The
Music Asia Co. Ltd.
Sub Publisher: Rock Music
Publishing (Taiwan) Co., Ltd.

Licensed Music Sourced by i10Q



NOTES



NOTES

A series of horizontal dashed lines for writing notes, with a large, faint, stylized graphic of a mountain range or landscape in the background.

NOTES

NOTES

A series of horizontal dashed lines for writing notes, overlaid with a large, stylized ink splatter graphic.



NOTES



NOTES

A series of horizontal dashed lines for writing, spanning the width of the page. The lines are evenly spaced and extend across most of the page's width.





*Register online at
www.eidosregistration.com*

EIDOS, INC., LICENSE & LIMITED WARRANTY

Eidos, Inc., warrants to you, the original purchaser of this disc, that for a period of ninety (90) days from the date of your purchase, this disc shall be free from defects in materials and workmanship. If, at any time during the applicable ninety (90) day warranty period you determine that this limited warranty has been breached, Eidos, Inc., agrees, in its sole option, to repair or replace, \free of charge, any such disc, provided the disc is returned postage-paid to the Eidos, Inc., Factory Service Center and a proof of date of purchase is included. This limited warranty is not applicable to normal wear and tear and shall be void with respect to any defects that arise from disc abuse, unreasonable use, mistreatment or neglect. This disc is sold "as is" without any warranties of any kind, express or implied, including implied warranties of merchantability or fitness for a particular purpose, other than the limited warranty expressly stated above.

No other claims arising out of your purchase and use of this disc shall be binding on or obligate Eidos, Inc., in any manner. Eidos, Inc., will not be liable to you for any losses or damages incurred for any reason as a result of your use of this disc, including, but not limited to, any special, incidental, or consequential damages resulting from your possession, use or malfunction of this disc.

This limited warranty states the entire obligation of Eidos, Inc., with respect to the purchase of your disc. If any part of this limited warranty is determined to be void or illegal, the remainder shall remain in full force and effect.

For warranty support please contact our Customer Support department at (650) 421-7670 or email us at support@support.eidosinteractive.com or visit our website at: support.eidosinteractive.com. Our staff are available Monday through Friday, 9:00 a.m. to 12:00 noon and 1:00 p.m. to 5:00 p.m. Pacific Time. You are responsible for all toll charges. **Customer Support Representatives will not provide game hints, strategies or codes.**

PRODUCT RETURN PROCEDURE

In the event our support agents determine that your game disc is defective, you will need to forward material directly to us. Please include a brief letter explaining what is enclosed and why you are sending it to us. The agent you speak with will give you an authorization number that must be included and you will need to include a daytime phone number so that we can contact you if necessary. Any materials not containing this authorization number will be returned to you unprocessed and unopened.

Send your postage-paid package to the following address:

Eidos, Inc.
RMA# (state your authorization number here)
1300 Seaport Boulevard
Redwood City, CA 94063

You are responsible for postage of your game to our service center.



KANE & LYNCH

DEAD MEN™

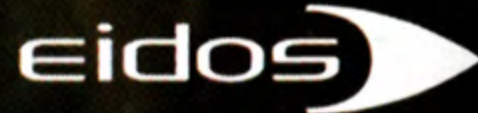
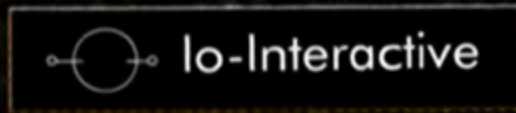
RATING PENDING

RP

ESRB CONTENT RATING

Visit www.esrb.org for updated rating information.

www.esrb.org



PLAYSTATION 3

© 2007 Io Interactive A/S. Developed by Io Interactive. Published by Eidos, Inc. Hitman, Hitman Contracts, Kane and Lynch: Dead Men, Eidos and the Eidos logo are trademarks of Eidos Interactive Ltd. Io and the Io logo are trademarks of Io Interactive A/S. All rights reserved. The rating icon is a registered trademark of the Entertainment Software Association. "PlayStation", "PLAYSTATION" and "PS" Family logo are registered trademarks of Sony Computer Entertainment Inc. PHTMCSUS23

WWW.KANEANDLYNCH.COM