

Harry Potter

AND THE
CHAMBER
OF SECRETS™



EVERYONE
E
CONTENT RATED BY
ESRB



WARNING: READ BEFORE USING YOUR PLAYSTATION®2 COMPUTER ENTERTAINMENT SYSTEM.

A very small percentage of individuals may experience epileptic seizures when exposed to certain light patterns or flashing lights. Exposure to certain patterns or backgrounds on a television screen or while playing video games, including games played on the PlayStation 2 console, may induce an epileptic seizure in these individuals. Certain conditions may induce previously undetected epileptic symptoms even in persons who have no history of prior seizures or epilepsy. If you, or anyone in your family, has an epileptic condition, consult your physician prior to playing. If you experience any of the following symptoms while playing a video game—dizziness, altered vision, eye or muscle twitches, loss of awareness, disorientation, any involuntary movement, or convulsions—IMMEDIATELY discontinue use and consult your physician before resuming play.

WARNING TO OWNERS OF PROJECTION TELEVISIONS:

Do not connect your PlayStation 2 console to a projection TV without first consulting the user manual for your projection TV, unless it is of the LCD type. Otherwise, it may permanently damage your TV screen.

USE OF UNAUTHORIZED PRODUCT:

The use of software or peripherals not authorized by Sony Computer Entertainment America may damage your console and/or invalidate your warranty. Only official or licensed peripherals should be used in the controller ports or memory card slots.

HANDLING YOUR PLAYSTATION 2 FORMAT DISC:

- This disc is intended for use only with PlayStation 2 consoles with the NTSC U/C designation.
- Do not bend it, crush it, or submerge it in liquids.
- Do not leave it in direct sunlight or near a radiator or other source of heat.
- Be sure to take an occasional rest break during extended play.
- Keep this compact disc clean. Always hold the disc by the edges and keep it in its protective case when not in use. Clean the disc with a lint-free, soft, dry cloth, wiping in straight lines from center to outer edge. Never use solvents or abrasive cleaners.

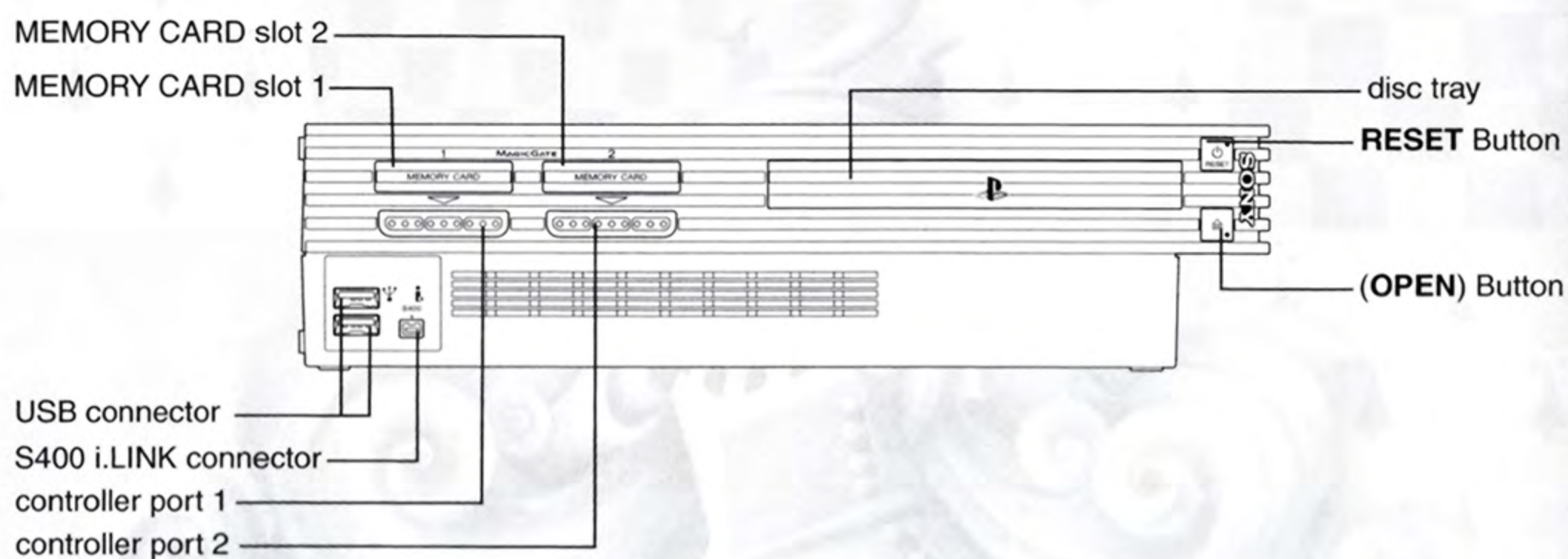
This product has been rated by the Entertainment Software Rating Board. For information about the ESRB rating, or to comment about the appropriateness of the rating, please contact the ESRB at 1-800-771-3772.

Contents

STARTING THE GAME	2
CONTROL SUMMARY	3
MENU CONTROLS	3
IN-GAME CONTROLS	3
FLYING CONTROLS	4
DARE YOU RETURN TO HOGWARTS?	5
BEGINNING A NEW GAME	6
MAIN MENU	6
GAME SCREEN	6
PLAYING THE GAME	7
INTERACTING WITH HARRY'S WORLD	7
REMEMBRALL	10
CASTING SPELLS	14
INVENTORY AND ITEMS	16
PAUSE MENU	18
OPTIONS	19
SAVING AND LOADING	20
CREDITS	21
LIMITED 90-DAY WARRANTY	24

Starting the Game

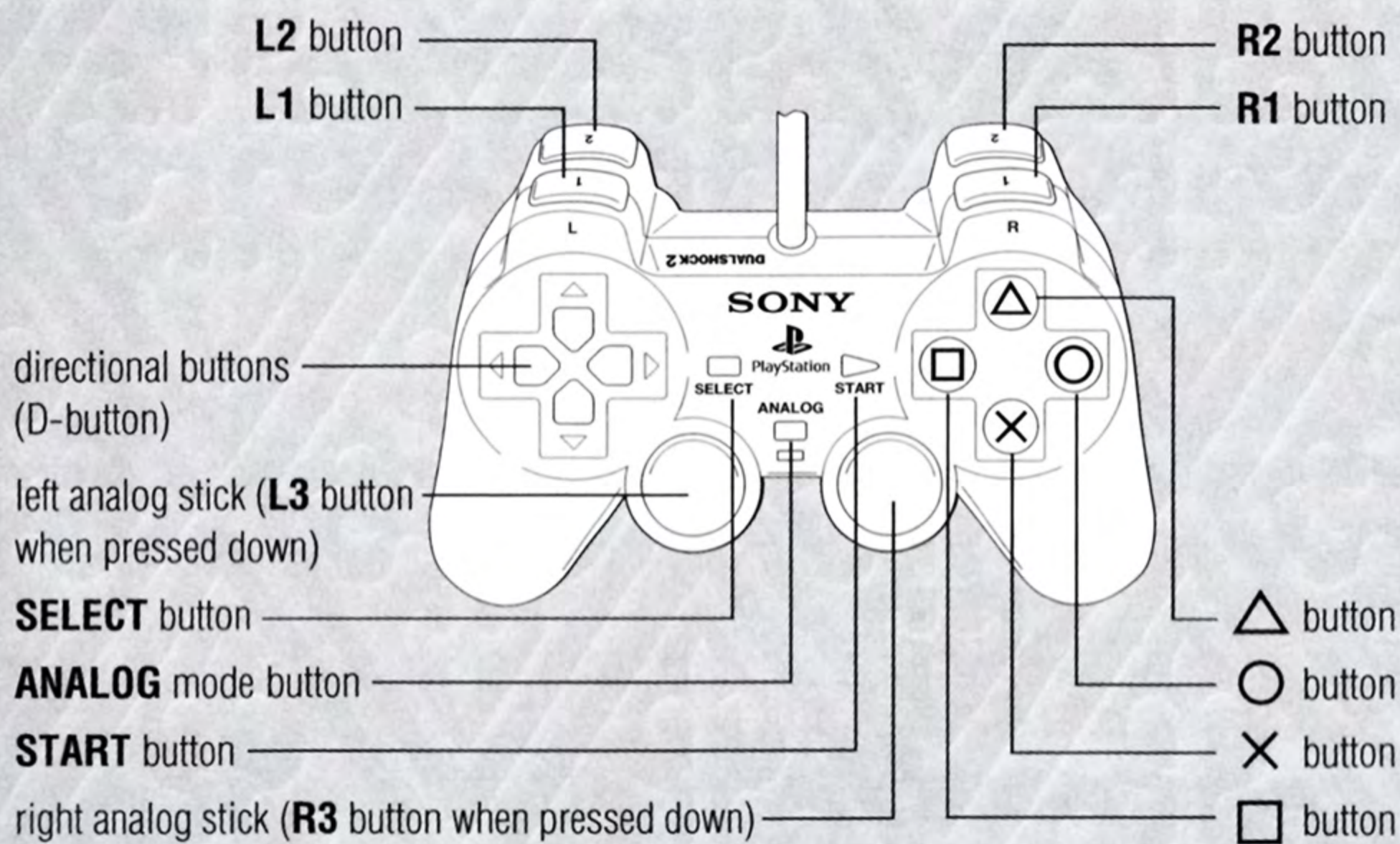
PlayStation®2 computer entertainment system



1. Set up your PlayStation®2 computer entertainment system according to the instructions in its Instruction Manual.
2. Make sure the MAIN POWER switch (located at the back of the console) is turned on.
3. Press the RESET button. When the power indicator lights up, press the open button and the disc tray will open.
4. Place the *Harry Potter and the Chamber of Secrets*™ disc on the disc tray with the label side facing up. Press the open button again and the disc tray will close.
5. Attach game controllers and other peripherals, as appropriate.
6. Follow on-screen instructions and refer to this manual for information on using the software.

Control Summary

DUALSHOCK[®]2 analog controller configurations



Menu Controls

Highlight Option	directional button / left analog stick ↑
Adjust Selected Option	directional button / left analog stick ↔
Select highlighted option/ Complete Action	× button
Return to Previous Screen	▲ button

In-Game Controls

Move Harry	left analog stick
Cast spells	■ button

NOTE: For more information on the spells you must learn and how to assign them to the ■ button, ● button, and ▲ button, ► **Casting Spells** on p. 14.

Action (Context Sensitive)	× button
----------------------------	----------

NOTE: Context Sensitive means when you get Harry up close to objects and people the × button's function changes.

Target Spell
(change targets)

Face Harry towards target and
press and hold **R1** button (release
and press again to change targets)

NOTE: For more information, ► *Aiming Spells* on p. 14.

NOTE: The camera will rotate to the optimum position, given a moment or two.

Take a closer look/
Sneak-A-Peak in Stealth Mode

L2 button or **R2** button

Camera 'Look Around'

right analog stick

Center View Behind Harry

R1 button

Zoom

Press and hold **R3** button

Pause Game/In-game Options

START button

Consult the Remembrall
(Tasks, Inventory, Quests,
and Maps)

SELECT button

Flying Controls

There are two techniques you may use to maneuver your broomstick. The techniques are known as **NORMAL** and **REVERSE**. Madam Hooch will give you a broomstick control test at the beginning of your first flying lesson to see which technique you naturally favor. Your flying controls are set based upon how you handle the broomstick in this test.

◆ Press the left analog stick \updownarrow to control your broom's ascent and descent.

To accelerate, press the **✖** button.

If you later decide to try your hand at the alternative technique, you can switch using the **FLYING CONTROL** in the Options menu.

Dare You Return to Hogwarts?



As a young wizard in training, Harry Potter can't wait to leave the non-magical world behind and return to Hogwarts School of Witchcraft and Wizardry for his second year. But during the summer holidays, a most peculiar visitor appears in Harry's bedroom with a dire warning—disaster will strike if Harry returns to Hogwarts!

As the new term starts, this grave prediction seems to be coming true. Strange and terrible events occur—and Harry always seems to be nearby. Panic reigns, but nobody knows who—or what—is to blame.

With the help of old friends, Ron and Hermione, it's up to Harry to solve the mystery and clear his name, before another victim is claimed and Hogwarts is shut down for good!

FOR MORE INFO *about this and other titles, visit EA GAMES™ on the web at www.eagames.com.*

HUFFLEPUFF™

Beginning a New Game

When the game loads, press the **START** button at the title screen to access the Main menu.

Main Menu

New Game—Highlight and press the **X** button to begin your second year at Hogwarts

Options—Adjust a variety of game settings (► *Options* on p. 19)



Load Game—Highlight and press the **X** button to continue a previously saved adventure (this option is unavailable the first time you play)

- ◆ To begin a new adventure, select **NEW GAME** from the Main menu and press the **X** button. The introductory sequence runs and the game begins.

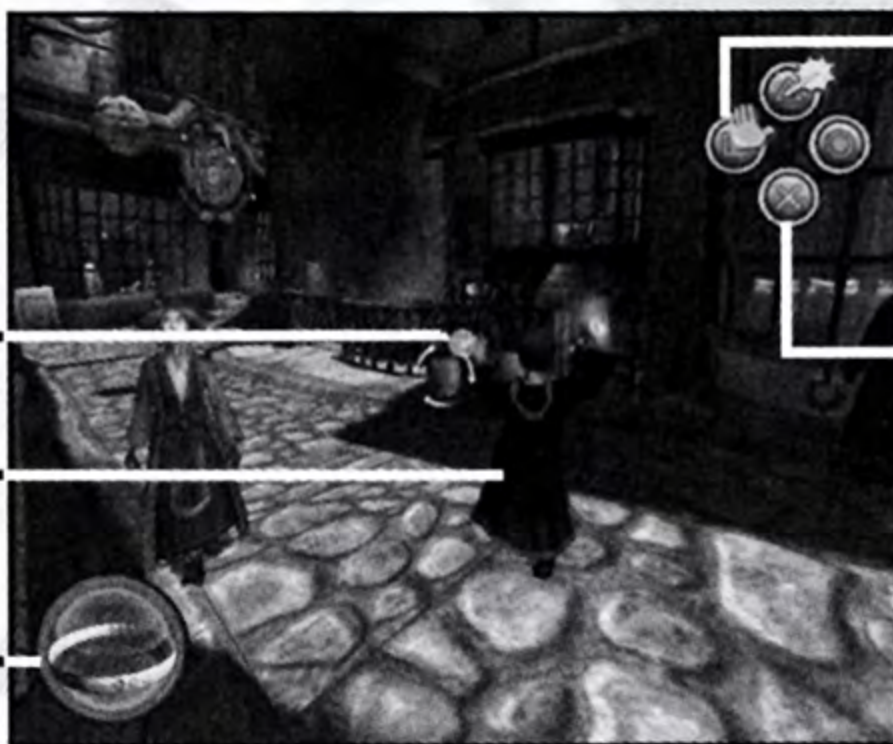
NOTE: For information on saving your progress or loading a saved game, ► *Saving and Loading* on p. 20.

Game Screen

Barrel—Press and Hold the **RI** button to target objects and creatures with certain spells (► *Aiming Spells* on p. 14);

Harry—To move Harry, press the left analog stick (► *Interacting with Harry's World*, next page)

Remembrall—Press the **SELECT** button to open the Remembrall to help you decide what to do next (► *Using your Remembrall* on p.10)



Spell Button—To cast the assigned spell, press the **■** button (► *Casting Spells* on p. 14)

Action—Talk to other characters and interact with various objects by pressing the **X** button to talk (► *Interacting with Harry's World*, next page)

NOTE: The onscreen Remembrall flashes when a new objective is added to the Tasks list.

Playing the Game

Interacting with Harry's World

RUNNING, WALKING, AND SNEAKING



Press the left analog stick fully in the direction of travel to move quickly.



Press the left analog stick halfway in the direction of travel to move Harry around at walking pace.



Lightly press the left analog stick so Harry can stealthily creep past difficult situations!

NOTE: *Harry can back up against certain walls and enter stealth mode.*



If he's up against a wall and you want to sneak a peek around the corner, press the **R2** button or the **L2** button.

To step away from the wall, press the **✕** button.

INTERACTING WITH THE WORLD

Move Harry close to people and objects to see if he can interact with them. If he can, the onscreen Action button (**✕** button) tells you what to do.

Harry can push and pull heavy objects to clear his way, or to use them to help him climb.

Approaching unfamiliar objects can be extremely useful in your quest.

JUMPING, CLIMBING, AND HANGING

When every door you try is locked and cupboards do not contain vital clues, sometimes the only way out of a situation is to climb...

Approach likely looking objects and move Harry towards them by pressing the left analog stick; if Harry can climb, he will.

NOTE: *To climb a ladder, press the Action button (the ✕ button) then press the left analog stick ↕.*

Run towards an edge and Harry jumps....



...but walk towards a gap and he'll grab hold of the edge and hang.

To make Harry drop from the ledge, press the ✕ button.

NOTE: *Harry cannot drop from all ledges.*

◆ To make him climb back up, press the left analog stick ↑.

NOTE: *There are a number of other ways of exploring nooks and crannies, but you'll discover these as you play through the game if you pay attention to the onscreen Action button (the ✕ button).*

BUMPS AND KNOCKS

Though tough, Harry is not invulnerable. If he's pelted with stink pellets or attacked by angry gnomes, he'll get knocked over and lose stamina.

Tip: *To restore some stamina, eat a Chocolate Frog (if you can catch it) or drink a Wiggeweld Potion from the Inventory.*

GNOME THROWING

For wizards, de-gnoming is essential to good garden maintenance. Follow these simple instructions to de-gnome like a modern day Beaumont Marjoribanks*!

1. Cast Flipendo (the ■ button) at the pesky creature to stun it.
2. Approach the gnome while he's still seeing stars and press the ✕ button when 'Carry' appears over the onscreen ✕ button.
3. Once Harry has grasped the gnome by his ankles 'Throw' appears over the onscreen ✕ button. Now, move to a suitable position to commence the throw—press and **hold** the ✕ button to start spinning like a hammer thrower.
4. Time your release of the ✕ button to coincide with the green arrow's appearance. Try to let the blue power bar build up a bit, first. If you time it right, Harry could beat Fred at his own game!

NOTE: *Don't spin for too long, or Harry will get dizzy and drop the gnome.*



GRYFFINDOR

*Beaumont Marjoribanks - Pioneer of Herbology. Discovered Gillyweed.

Remembrall

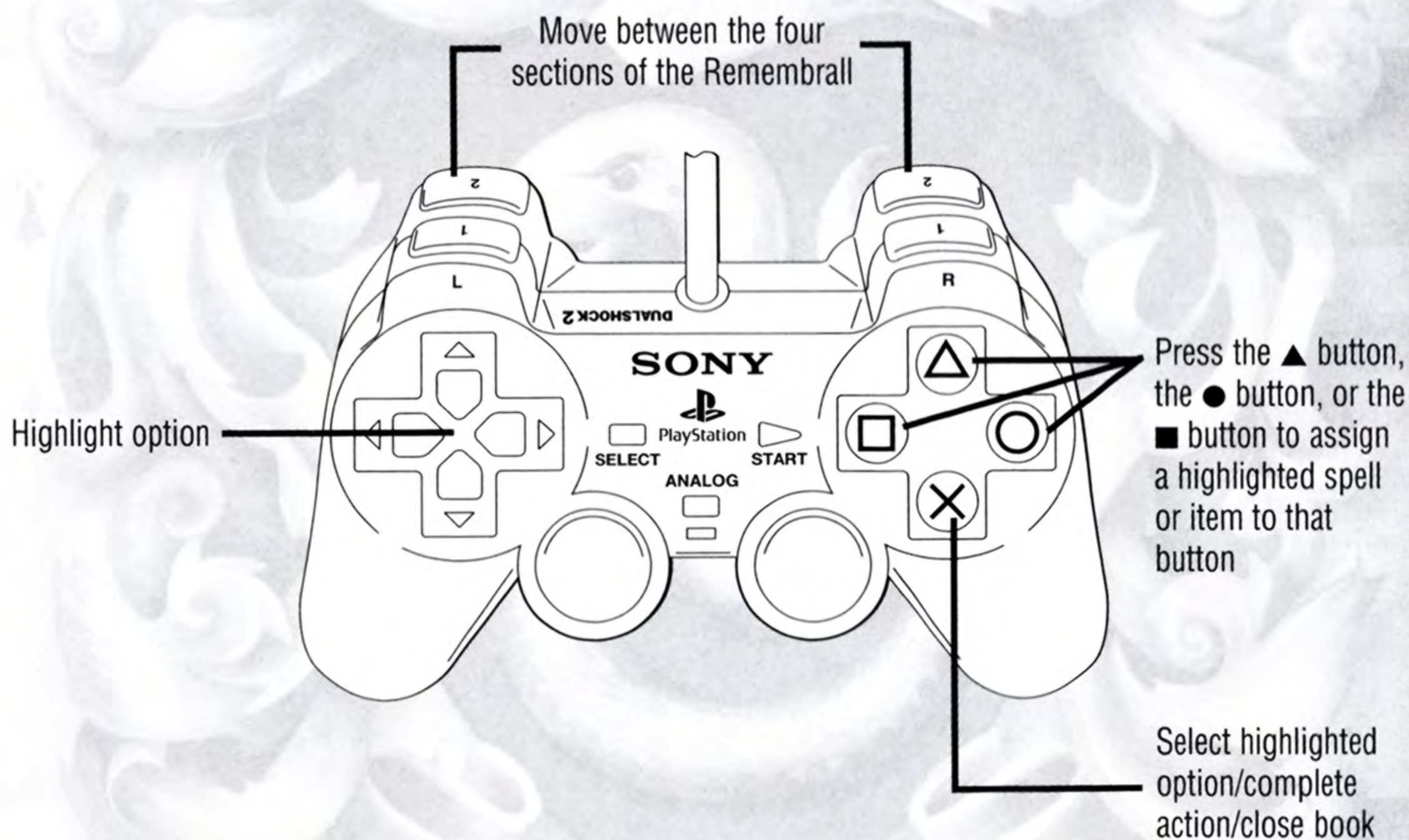
USING YOUR REMEMBRALL

Press the **SELECT** button to enter/exit your Remembrall.

Help on your adventure comes in the guise of the Remembrall. This useful object reminds you of crucial information, and provides a place to store the items you have collected.

If you are to discover the mystery of the Chamber of Secrets, familiarize yourself with its features and check back frequently!

NAVIGATING THE REMEMBRALL



TASKS LIST

Keep one eye on the tasks at hand to save time and keep your adventure on track. If you don't complete certain tasks, you'll be unable to progress. Consult this list regularly, both day and night, and you won't go wrong.

NEW TASKS

Every time a new task is added to the Tasks list, the Remembrall flashes in the bottom left of the screen. Take a moment to press the **SELECT** button and look at the Tasks list in the Remembrall.

Once you complete a task, it will receive a checkmark to signify that it has been completed.

THE PASSAGE OF TIME AT HOGWARTS

Once all your tasks are completed at the end of each day, you may want to continue exploring, searching, or trading with your fellow students. But without some sleep you'll be in no state to find out what's amiss at Hogwarts. Make sure you get your head down for a few hours each night.

A Bed icon flashes up onscreen when it's time for you to end your day.

Once you're ready for the next level, select END DAY from the Tasks list in your Remembrall (press the ✖ button when viewing the Tasks screen).

QUEST

The Quest section of your Remembrall shows all items for which you are currently searching as well as the items you've collected.

You can look at your school books here for further clues and tips on the spells you have learned and the monsters you've encountered.

Once the Quidditch season gets underway, check the *School Records* book for updates.

Tip: Before you can consult some of these useful tomes, you'll have to find them. *Flourish & Blotts* in Diagon Alley has an excellent selection of wizarding books.

FOLIO MAGI

Young wizards like to collect Famous Witches and Wizards cards. These cards depict the most eminent or notable witches and wizards throughout history in vivid detail. The Folio Magi is where your Witches and Wizards cards are stored.

TRADING WITCHES AND WIZARDS CARDS

Approach students in corridors and other communal areas to engage in Hogwarts students' favorite pastime after Quidditch—Witches and Wizard Card trading.

If you have the cards they're after, you might find some real rarities and complete Harry's collection!

INVENTORY

The Inventory is where items and spells you have found and learned are stored. Go to the Inventory to assign items and spells to the ■ button, the ● button, or the ▲ button on your controller.

To equip a Spell or Item

1. Press the directional button to highlight the spell or item you want to equip, and then press the ■ button, the ● button, or the ▲ button.
2. When you return to the game the item or spell is assigned to the button so you can see it on the onscreen descriptions.
3. Press the respective button to cast the spell or use the item.

Tip: Any spell or item previously allocated to a button is returned to your Inventory. Wizards-in-training may find it's best to allocate only regularly used items or spells to the buttons.

NOTE: For further information on the Inventory and items contained within, ► *Inventory and Items* on p. 16.

MAPS

All students are issued maps automatically. Consult the Maps section if you lose your bearings or want to familiarize yourself with the area.

DISCLAIMER: *It should be noted that although map-makers are skilled in their craft, they may not be aware of the many secret rooms scattered throughout the magical world.*

NOTE: *You can only consult a map of the area you are currently in.*

HUFFLEPUFF

Casting Spells

Good spell casting is the cornerstone of any wizard's repertoire. Learning opportunities present themselves in the most unlikely situations, so keep an eye out for a chance to practice your craft.

Press the respective spell button to cast the currently selected spell. Flipendo is set to the **■** button by default.

AIMING SPELLS

To aim a spell, face Harry in the direction of the desired target then press and hold the **R1** button. If you can aim at the target, a magical target appears around it.

- As soon as you've aimed, press the chosen spell button and the spell is cast.

Press the **✕** button and Harry might be able to dodge, avoiding any projectiles or spells.

NOTE: Hold the **R1** button until after Harry has cast the spell or he may miss his target!

TARGETING MULTIPLE OBJECTS

- ◆ If you encounter multiple opponents, you can target each of them in turn as long as they are in front of Harry. Press the **R1** button repeatedly to cycle through the potential targets.

Tip: Try the Flipendo spell on everyday objects. A well-aimed spell cast at a breakable object could reap rewards or collect anything from magical sweets to Wizard Money!

- ◆ For further information on more advanced spell casting, see next page.

ADVANCED SPELL CASTING (GRADE 2)

In order to progress through your adventure Harry will need to learn new spells.

To begin with, Harry can only cast relatively weak first year spells. Later on, when he's got a copy of Miranda Goshawk's famous *The Standard Book of Spells (Grade 2)*, you can begin learning to cast the perfect spell.

To consult *The Standard Book of Spells*, go to the Quests section of your Remembrall and select it.

HOW TO CAST A PERFECT SPELL

1. First, make sure you have a copy of *The Standard Book of Spells* in your Inventory. Without it, Harry cannot cast a grade 2 spell.
2. Press and hold the spell button (the ■ button, the ● button or the ▲ button).
3. Now, allow the spell power to build up and then release it to cast the spell.

If you release the spell button at the right time you will perform a 'Perfect Cast'—the most powerful version of that spell.

Tip: Observant witches-in-training and wizards-in-training keep one eye on the color of a powering spell to maximize their chances of casting perfectly.

Be careful not to hold the spell button down too long as the spell may backfire on Harry!

Inventory and Items

The Inventory is where your useful items are stored and accessed.

To access the Inventory, press the **SELECT** button and then press the **R2** button or the **L2** button to move to the Inventory section of the Remembrall.

To assign (equip) a spell or item, press the directional button to highlight it then press the **■** button, the **●** button or the **▲** button (NOT the **✕** button).

The Inventory section of your Remembrall is a powerful tool—its use is essential if you are to defeat the challenges that lie ahead.

NOTE: *You cannot assign every item in your inventory to a button. For example, Bertie Bott's Every Flavor Beans and Wizard Money do not need to be assigned, but are used automatically when the need arises.*

BERTIE BOTT'S EVERY FLAVOR BEANS

These delightful wizard treats come in almost every flavor imaginable, plus more than a few flavors you might not have dreamt possible!

Tip: Take your beans to Fred and George's shop at Hogwarts to trade for other interesting and useful items.

CHOCOLATE FROGS

These delicious, but jumpy confections must be stunned with a 'knockback jinx' before Harry can eat them. They're so good that they impart incredible health-giving properties when eaten.

NOTE: *Chocolate Frogs are not stored in your inventory—they are consumed immediately when Harry picks them up.*

WIZARD CARDS

The images of renowned witches and wizards on these cards aren't the only things that make them special.

View them in your Folio Magi, which can be found in the Quest section of your Remembrall.

◆ Trade them with other students at Hogwarts.

Every ten cards collected extend Harry's stamina by a small amount.

EEYLOPS PREMIUM OWL TREATS

They're "the best thing for a happy, healthy owl." Feed these furry morsels to Hedwig to encourage her to accomplish tasks for you.

NOTE: Owl Treats appear in the Quest section of your Remembrall and are used automatically when Hedwig is hungry.

MONEY

Wizard Money can be used to buy things you might need in Diagon Alley. Students from non-magical families should note that there are 17 Sickles to a Galleon and 29 Knuts to a Sickle.

Tip: Money can be found in the most unusual of locations. Try a perfect Flipendo on everyday objects and see what happens.

POTION VIALS

Use potion vials as containers for stamina-replenishing Wiggeweld Potion. This magical elixir is often to be found in large cauldrons and even hollow tree trunks throughout the wizarding world. Assign a full vial and use it when Harry needs a boost of extra stamina.

STINK PELLETS

Throw these diminutive items, much beloved by Fred and George Weasley, to create a cloud of stinking green smoke that'll distract and confuse opponents or prefects.

NON-EXPLODABLE LUMINOUS BALLOONS

Assign and inflate these magical novelty items to create extremely noisy distractions in tricky situations.

NIMBUS TWO THOUSAND

A superior racing broom. Assign this item to fly in permitted areas of Hogwarts' Grounds.

Pause Menu

Press the **START** button to access the Pause menu.

- | | |
|--------------------|--|
| RESUME GAME | Select to return to your adventure. |
| SAVE GAME | Select to save your progress in the currently loaded game (► Saving a Game on p. 20). |
| OPTIONS | Highlight and select to adjust your gameplay options (► Options on p. 19 for details). |
| QUIT GAME | Return to the Main menu to begin a NEW GAME or CONTINUE a previously saved game. |

Options

Select Options to invert camera control, switch broomstick flying techniques, center the screen and switch vibration options **ON** or **OFF**.

You can access the Options menu from the Main menu or from the in-game Pause menu.

NOTE: *Default Settings are displayed below in **bold**. On screen, the currently selected option is white.*

IMPORTANT NOTE: *Changes made to options settings are saved when you save a game and affect all subsequent games, unless you make further changes in the Options menu.*

CAMERA CONTROL

Switch between **REVERSE** and **NORMAL**.

FLYING CONTROL

Switch between **REVERSE** and **NORMAL** broomstick techniques.

CENTER SCREEN

Highlight and press the **✕** button. Press the directional button and use the on-screen guides to adjust the screen. Press the **✕** button to set it and exit.

VIBRATION

Switch controller vibration **ON/OFF** to feel the magic of Hogwarts firsthand.

SUBTITLES

Switch on-screen text **OFF**, if you wish.

NOTE: *Changes to settings can be saved to a memory card (8MB) (for PlayStation®2) in MEMORY CARD slot 1 upon exiting the Options screen by selecting **SAVE GAME**.*

Saving and Loading

NOTE: Never insert or remove a memory card when loading or saving files.

NOTE: *Harry Potter and the Chamber of Secrets* only supports MEMORY CARD slot 1.

Saving a game

To save your progress in *Harry Potter and the Chamber of Secrets*:

1. Press the **START** button to bring up the Pause menu. Highlight SAVE GAME and press the **X** button.
2. Now, press the directional button \uparrow to select a Save Game area and press the **X** button.
 - If there are no empty Save Game areas, you must highlight an old saved game and save your new game in its place (OVERWRITE).
 - If you are sure you want to overwrite, press the directional button \uparrow to highlight YES, OVERWRITE and press the **X** button.
3. The game is saved and the Pause menu reappears.

NOTE: If you exit *Harry Potter and the Chamber of Secrets* without saving, you lose all progress made during that session.

Loading a Game

1. Highlight CONTINUE from the Main menu and press the **X** button.
2. Press the directional button \uparrow to select the Save Game you wish to load and press the **X** button.
3. The Loading screen appears.

Credits

ELECTRONIC ARTS EUROPE

Production Team: Mike Cooper, Jeff Gamon, Caroline Hall, Simon Harris, Shintaro Kanaoya, Jon Lawrence, Owen O'Brien, Robert O'Farrell, Alex Peters, Neil Pettitt, Colin Robinson, Lisa Watt

Programming Team: Nick Bagley, Ben Bastian, Phil Bennett, Paul Bostock, Paul Brooke, David Bryson, Andrew Carr, Michael Carr, Austin Ellis, Karl Fitzhugh, Alex Harkness, Jez Harris, Mark Huntley, William Joseph, Andy Kerridge, William Leach, Andrew McDonald, Tim McSweeney, Colin Moore, Jarl Ostensen, Morten Pedersen, David Picon, Mark Stacey, Gary Stead, Dave Stevenson, Bob Summerwill, Tim Swan, Nick Tuckett, Peter Walsh, Alan Wright

Art Team: Chris Baker, Chris Battson, Sarah Boylan, Simon Britnell, Richard Castle, Ross Dearsley, Alex Godsill, Colin Graham, Lennie Graves, Andre Gressieux, Michelle Hapke, Rachael Huntington, Justin King, Frank Kitson, Yukiko Konno, Steve Leney, James Lipscomb, Roger Lui, Mark Machin, Mike Man, John Miles, Simon Parkes, Neil Parkinson, Lee Robinson, Jason Smith, Lee Sullivan, Sarah Taylor, Kelvin Tuite, Gary Welch

Design & Scripting: Guy Miller, Simon Phipps

Voice Actors: Jim Dale, Tom Attenborough, Ben Avis, Jane Avis, Will'm Bentinck, Caroline Bernstein, Melanie Bright, Greg Chilingirian, David Coker, Allan Cordunner, Chris Crosby, Gary Fairhall, Jade Farmillo, Charlotte Fudge, William Green, Steve Hope Wyne, Daniel Irving, Joshual Jalloul, Martin Johnson, Ben Johnstone, Eve Karpf, Johnathan Kydd, Mark Lowen, Lewis Macleod, Joe McFadden, Joe Miller, Marina Neil, Freddie Ridge, Emily Robinson, Harry Robinson, Victoria Robinson

Audio Team: Adele Kellett, Nick Laviors, Bill Lusty, Ian MacBeth, Dominic Smart, Pete Ward

Music: Composed by Jeremy Soule; Performed by Jeremy Soule and the London Philharmonia

Choir - L.A. Vocal Majority: Darlene Koldenhoven, David Hartley, Audrey deRoche, Ross deRoche, Julian Soule, Paul Talkington, Alan Wilson, John Scott, Larry Kenton, Larry Kenton (Principal), Mark Gasbarro, Ira Hearshen, Andrew Kinney, Don Nemitz, Geoff Foster, Mike Ross

European Studio Marketing: Murray Pannell, Roy Meredith, Sara Hobson

Software Localisation Manager: Sam Yazmadjian

Localisation Project Managers: Sandra Picaper (Europe), Fuzuki Nimomiya and Tomomi Arakawa (Japan)

Production Manager: Jane Luckraft

Account Executive: Joanna Taylor

Production Planner: Helen Vaughan

Materials Co-ordinator: Peter Abbey

Documentation Manager: Joanne Moore

Documentation: James Lenoël, Sorcha Fenlon

Documentation Layout and Translation Coordination: Abdul Oshodi

Creative Account Executive: Tanya Etherington

Web Localisation Coordination: Sylvain Caburrosso

Quality Assurance: Ian Alder, George Alleway, Matthew Avery, Adam Beardwood, Jamie Cawte, Karl Christmas, Ian Deal, Richard Diaz, Trefor Evans, James Fry, Dan Golding, Joe Grant, Andy Hall, Noel Hawkins, Ed Howells, Richard Hylands, Patrick Klaus, Dean Lea, Richard Lloyd, Nick Long, Giro Najoriello, Tom Mann, Carl Mattin, Dan McDonald, Joe McNamara, Carl Mullans, Scott Newman, Phil O'Farrell, Marcus Purvis, Sajid Raza, Richard Sallis, Rocky Samrai, Pete Samuels, Martyn Sibley, Ben Spinks, Pete Sturgess, Mike Takla, William Wann, Ricky Watts, Paul Watson, John Welsh, James Willis

Mastering: Matt Price, Sam Roberts, Des Gayle, James Kneen, Donna Hicks, Wayne Boyce

European CQC Operations Manager: Linda Walker

European CQC Test Manager: Jean-Yves Duret

European CQC Test Supervisor: David Fielding

European CQC Test Leads: Andrew Chung, Paul Richards, Ben Jackson

European CQC Senior Testers: James Bolton, Dean Chouduri-Bennett, Paul Davies, Tony Hopkins, Andrea Iori, Jamie Keen, Gary Napper

European CQC Platform Manager: James Featherstone

European CQC Platform Specialists: Ashley Powell, James Arup, James Norton, Tim Wileman

Studio Ops: Anne Miller, Phil Jones

Special Thanks: J K Rowling, Danny Bilson, Dan Blackstone, David Byrne, Chuck Clanton, Steve Dauterman, Paul DeMeo, Ian Francis, Martina Gadringer, David Heyman, Mark Huntley, Jason Lord, David Lee, Paul Lee, Paul Marsden, Bruce McMillan, Iain Melvin, Lorraine Metcalf, Claire Offield, Leon O'Reilly, Derek Proud, Christopher Purcell, Ian Shaw, Anne Marie Stein, Kirstin Barratt and Harris Watson @ SCEE, Simone Weiss @ Sony DADC, Sandra Wilms, Stuart Whyte

EUROCOM ENTERTAINMENT SOFTWARE

Production Team: Phil Bennett, Suzanne Watson, Jon Williams

Art Team: Amanda Barlow, Matt Dixon, Phil Dobson, Matt Farrell, Steve Gratton, Henk Nieborg, Jon Parr, Phil Plunkett, Clive Stevenson, Steve Bamford, Drew Kerins, Mike Lindsay, Owen Flanagan, Desmonde Forde, Phil Hanks, Justin Lawless, David Navarro, Tony Palermo, Mark Povey

WARNER BROS. INTERACTIVE ENTERTAINMENT

Production Team: Brett Skogen, Louise McTighe

Marketing: Jim Molinaro, Jason Ades

Special Thanks: Philippe Erwin, Scott Johnson, Heidi Behrendt, Sandy Yi, Catherine Trillo, Niki Judd, Eloise Kay, Diane Nelson, Amber Fredman, Lisa Singer, Bethany Spenceman, Moira Squier, Robin Blackburn, Sarah Booth-Henry.

EA REDWOOD SHORES

Sr. Product Manager: David Lee

Marketing Intern: Jarrett Conaway

Package Project Management: Angela Santos

Manual Layout: The Big Idea Group

Customer Quality Control: Darryl Jenkins, Simon Steel, Dave Knudson, Tony Alexander, Anthony Barbagallo, Russell Medeiros, Eron Garcia

Limited 90-Day Warranty

ELECTRONIC ARTS™ LIMITED WARRANTY

Electronic Arts warrants to the original purchaser of this product that the recording medium on which the software program(s) are recorded (the "**Recording Medium**") and the documentation that is included with this product (the "**Manual**") are free from defects in materials and workmanship for a period of 90 days from the date of purchase. If the Recording Medium or the Manual is found to be defective within 90 days from the date of purchase, Electronic Arts agrees to replace the Recording Medium or Manual free of charge upon receipt of the Recording Medium or Manual at its service center, postage paid, with proof of purchase. This warranty is limited to the Recording Medium containing the software program and the Manual that were originally provided by Electronic Arts. This warranty shall not be applicable and shall be void if, in the judgment of Electronic Arts, the defect has arisen through abuse, mistreatment or neglect.

This limited warranty is in lieu of all other warranties, whether oral or written, express or implied, including any warranty of merchantability or fitness for a particular purpose, and no other representation of any nature shall be binding on or obligate Electronic Arts. If any such warranties are incapable of exclusion, then such warranties applicable to this product, including implied warranties of merchantability and fitness for a particular purpose, are limited to the 90-day period described above. In no event will Electronic Arts be liable for any special, incidental, or consequential damages resulting from possession, use or malfunction of this Electronic Arts product, including damage to property, and to the extent permitted by law, damages for personal injury, even if Electronic Arts has been advised of the possibility of such damages. Some states do not allow limitation as to how long an implied warranty lasts and/or exclusions or limitation of incidental or consequential damages so the above limitations and/or exclusion of liability may not apply to you. In such jurisdictions, the Electronic Arts' liability shall be limited to the fullest extent permitted by law. This warranty gives you specific rights. You may also have other rights that vary from state to state.

RETURNS WITHIN THE 90-DAY WARRANTY PERIOD

Please return the product along with (1) a copy of the original sales receipt, showing the date of purchase, (2) a brief description of the difficulty you are experiencing and (3) your name, address and phone number to the address below and Electronic Arts will mail a replacement Recording Medium and/or Manual to you. If the product was damaged through misuse or accident, this 90-day warranty is rendered void and you will need to follow the instructions for returns after the 90-day warranty period. We strongly recommend that you send your product using a traceable delivery method. Electronic Arts is not responsible for products not in its possession.

RETURNS AFTER THE 90-DAY WARRANTY PERIOD

If the defect in the Recording Medium or Manual resulted from abuse, mistreatment or neglect, or if the Recording Medium or Manual is found to be defective after 90 days from the date of purchase, please return the product along with (1) a check or money order for \$15.00 made payable to Electronic Arts, (2) a brief description of the difficulty you are experiencing and (3) your name, address and phone number to the address below, and Electronic Arts will mail a replacement Recording Medium and/or Manual to you. We strongly recommend that you send your product using a traceable delivery method. Electronic Arts is not responsible for products not in its possession.

EA WARRANTY CONTACT INFO

E-mail and Website: <http://techsupport.ea.com>

Phone: (650) 628-1900

Fax: (650) 628-5999

EA WARRANTY MAILING ADDRESS

Electronic Arts Customer Warranty

P.O. Box 9025

Redwood City, CA 94063-9025

NEED A HINT? Call the EA HINTS & INFORMATION HOTLINE for recorded hints, tips, and passwords 24 hours a day, 7 days a week!

In the US, dial 900-288-HINT (4468). 95c per minute.

In CANADA, dial 900-451-4873. \$1.15 (Canadian) per minute.

If you are under 18, be sure to get a parent's permission before calling. Hotline requires a touch-tone telephone. Call length determined by user; average length is four minutes. Messages subject to change without notice.

GRYFFINDOR

TECHNICAL SUPPORT—If you need technical assistance with this product, call us at (650) 628-4322 Monday through Friday between 8:30–11:45 AM or 1:00–4:30 PM, Pacific Standard Time. **No hints or codes are available from (650) 628-4322. You must call the EA HINTS & INFORMATION HOTLINE for hints, tips, or codes.**

TECHNICAL SUPPORT CONTACT INFO

E-mail and Website: <http://techsupport.ea.com>

If you live outside of the United States, you can contact one of our other offices.

In **Australia**, contact:
Electronic Arts Pty. Ltd.
P.O. Box 432
Southport Qld 4215
Australia UK

In the **United Kingdom**, contact:
Electronic Arts Ltd.
P.O. Box 181
Chertsey, KT16 0YL,
Phone (0870) 2432435

In **Australia**: For Technical Support and Game Hints and Tips, phone the EA HOTLINE: 1 902 261 600 (95 cents per min.) CTS 7 days a week 10 AM–8 PM. If you are under 18 years of age parental consent required.

NOTICE

Electronic Arts reserves the right to make improvements in the product described in this manual at anytime and without notice. This manual and the product described in this manual are copyrighted. All rights reserved. No part of this manual may be copied, reproduced, translated, or reduced to any electronic medium or machine readable form without prior written consent of Electronic Arts, P.O. Box 9025, Redwood City, California 94063-9025.

SLYTHERIN

Software & documentation © 2002 Electronic Arts Inc. Electronic Arts, EA GAMES, and the EA GAMES logo are trademarks or registered trademarks of Electronic Arts Inc. in the U.S. and/or other countries. All rights reserved. All other trademarks are the property of their respective owners. EA GAMES™ is an Electronic Arts™ brand.



HARRY POTTER, characters, names and related indicia are trademarks of and © Warner Bros. Harry Potter Publishing Rights © JKR.

WBIE LOGO, WB SHIELD: ™ & © Warner Bros.

Anglia is a trademark owned and licensed by Ford Motor Company.

(s02)

GET IN THE GAME

WANT TO JOIN THE #1 INTERACTIVE ENTERTAINMENT COMPANY?

VISIT EA RECRUITER AT [HTTP://JOBS.EA.COM](http://jobs.ea.com).

STILL A STUDENT?

CHECK OUT EA ACADEMY AT [HTTP://EAACADEMY.EA.COM](http://eaacademy.ea.com).

PROOF OF PURCHASE
HARRY POTTER AND THE CHAMBER OF SECRETS™



HUFFLEPUFF™



Go Wild Down Under!!!

G'DAY MATE. GO DEEP INTO THE WILD AND DANGEROUS AUSTRALIAN OUTBACK AS TY THE TASMANIAN TIGER. ARMED WITH AN ARSENAL OF HIGH-FLYIN' BOOMERANGS, A FIERCE SET OF CHOMPERS, AND A "NO WORRIES" ATTITUDE, YOU'RE SET TO TAKE ON THE EVIL BOSS CASS.



Features

- > EXPLORE OVER 15 LEVELS OF A VAST AND DANGEROUS AUSTRALIAN WILDERNESS
- > WIELD 13 DIFFERENT HI-TECH BOOMERANGS, INCLUDING THE FROSTYRANG, FLAMERANG, AND POWERFUL DOOMARANG
- > INTERACT WITH A CAST OF OVER 50 DIFFERENT AUSTRALIAN MATES AND UNRULY FOES



Electronic Arts Inc., 209 Redwood Shores Parkway, Redwood City, CA 94065.

© 2002 Krome Studios Pty Ltd. All rights reserved. Ty the Tasmanian Tiger and the Krome Studios logo are trademarks of Krome Studios Pty Ltd. Electronic Arts, EA GAMES and the EA GAMES logo are trademarks or registered trademarks of Electronic Arts Inc. in the U.S. and/or other countries. All other trademarks are the property of their respective owners. EA GAMES™ is an Electronic Arts™ brand.

Licensed for play on the PlayStation 2 computer entertainment systems with the NTSC U/C designation only. "PlayStation" and the "PS" Family logo are registered trademarks of Sony Computer Entertainment Inc. The ratings icon is a trademark of the Interactive Digital Software Association. Manufactured and printed in the U.S.A. THIS SOFTWARE IS COMPATIBLE WITH PLAYSTATION 2 CONSOLES WITH THE NTSC U/C DESIGNATION. U.S. AND FOREIGN PATENTS PENDING. 1454905

KROME
STUDIOS

