

WALT DISNEY
PICTURES

BOLT

Episode #332
Script Draft: FINAL

“Instruction Manual”



⚠ WARNING: PHOTSENSITIVITY/EPILEPSY/SEIZURES

READ BEFORE USING YOUR PLAYSTATION®2 COMPUTER ENTERTAINMENT SYSTEM.

A very small percentage of individuals may experience epileptic seizures or blackouts when exposed to certain light patterns or flashing lights. Exposure to certain patterns or backgrounds on a television screen or when playing video games may trigger epileptic seizures or blackouts in these individuals. These conditions may trigger previously undetected epileptic symptoms or seizures in persons who have no history of prior seizures or epilepsy. If you, or anyone in your family, has an epileptic condition or has had seizures of any kind, consult your physician before playing. IMMEDIATELY DISCONTINUE use and consult your physician before resuming gameplay if you or your child experience any of the following health problems or symptoms:

- dizziness
- altered vision
- eye or muscle twitches
- loss of awareness
- disorientation
- seizures
- any involuntary movement or convulsion

RESUME GAMEPLAY ONLY ON APPROVAL OF YOUR PHYSICIAN.

Use and handling of video games to reduce the likelihood of a seizure

- Use in a well-lit area and keep as far away as possible from the television screen.
 - Avoid large screen televisions. Use the smallest television screen available.
 - Avoid prolonged use of the PlayStation®2 system. Take a 15-minute break during each hour of play.
 - Avoid playing when you are tired or need sleep.
-

Stop using the system immediately if you experience any of the following symptoms: lightheadedness, nausea, or a sensation similar to motion sickness; discomfort or pain in the eyes, ears, hands, arms, or any other part of the body. If the condition persists, consult a doctor.

WARNING TO OWNERS OF PROJECTION TELEVISIONS:

Do not connect your PlayStation®2 system to a projection TV without first consulting the user manual for your projection TV, unless it is of the LCD type. Otherwise, it may permanently damage your TV screen.

HANDLING YOUR PLAYSTATION®2 FORMAT DISC:

- This disc is intended for use only with PlayStation®2 consoles with the NTSC U/C designation.
- Do not bend it, crush it or submerge it in liquids.
- Do not leave it in direct sunlight or near a radiator or other source of heat.
- Be sure to take an occasional rest break during extended play.
- Keep this compact disc clean. Always hold the disc by the edges and keep it in its protective case when not in use. Clean the disc with a lint-free, soft, dry cloth, wiping in straight lines from center to outer edge. Never use solvents or abrasive cleaners.

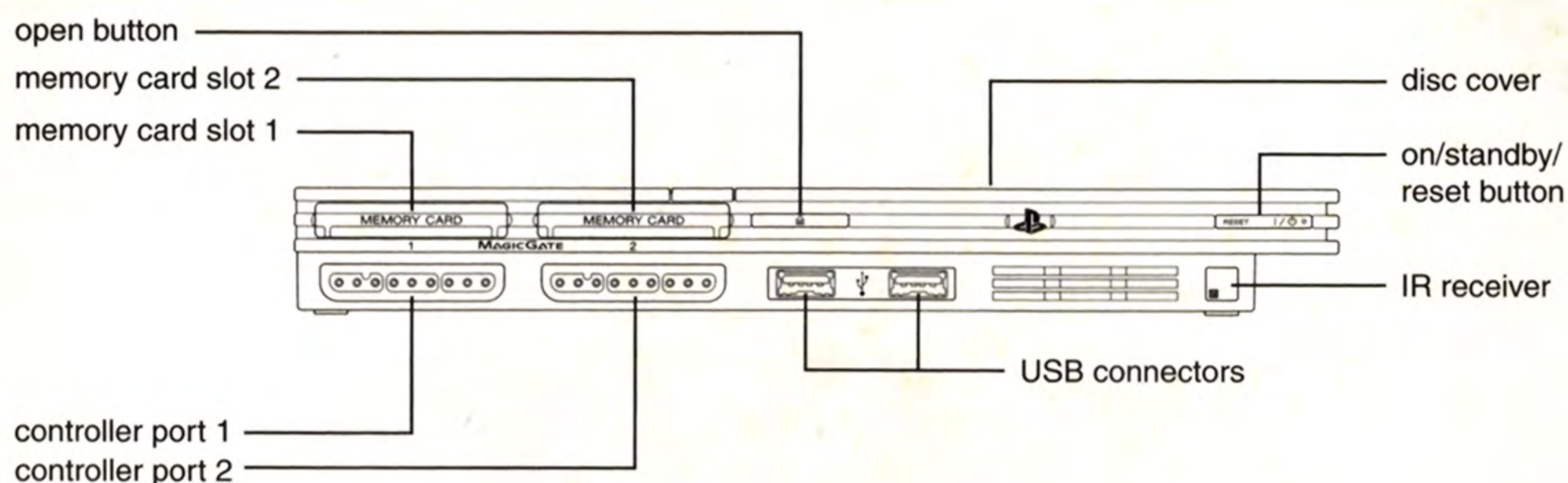
WALT DISNEY
PICTURES

BOLT

Table of Contents

Getting Started	2
Starting up	3
Rescue Penny's Father from the Evil Calico.....	4
Mode of Play.....	5
Start the Adventure.....	5
Bolt's Controls	6
Penny's Controls	7
HUD	8
Pick-Ups.....	8
Environments	9
Villains	10
MiniGames	11
Customer Support	12
Limited Warranty.....	13

GETTING STARTED



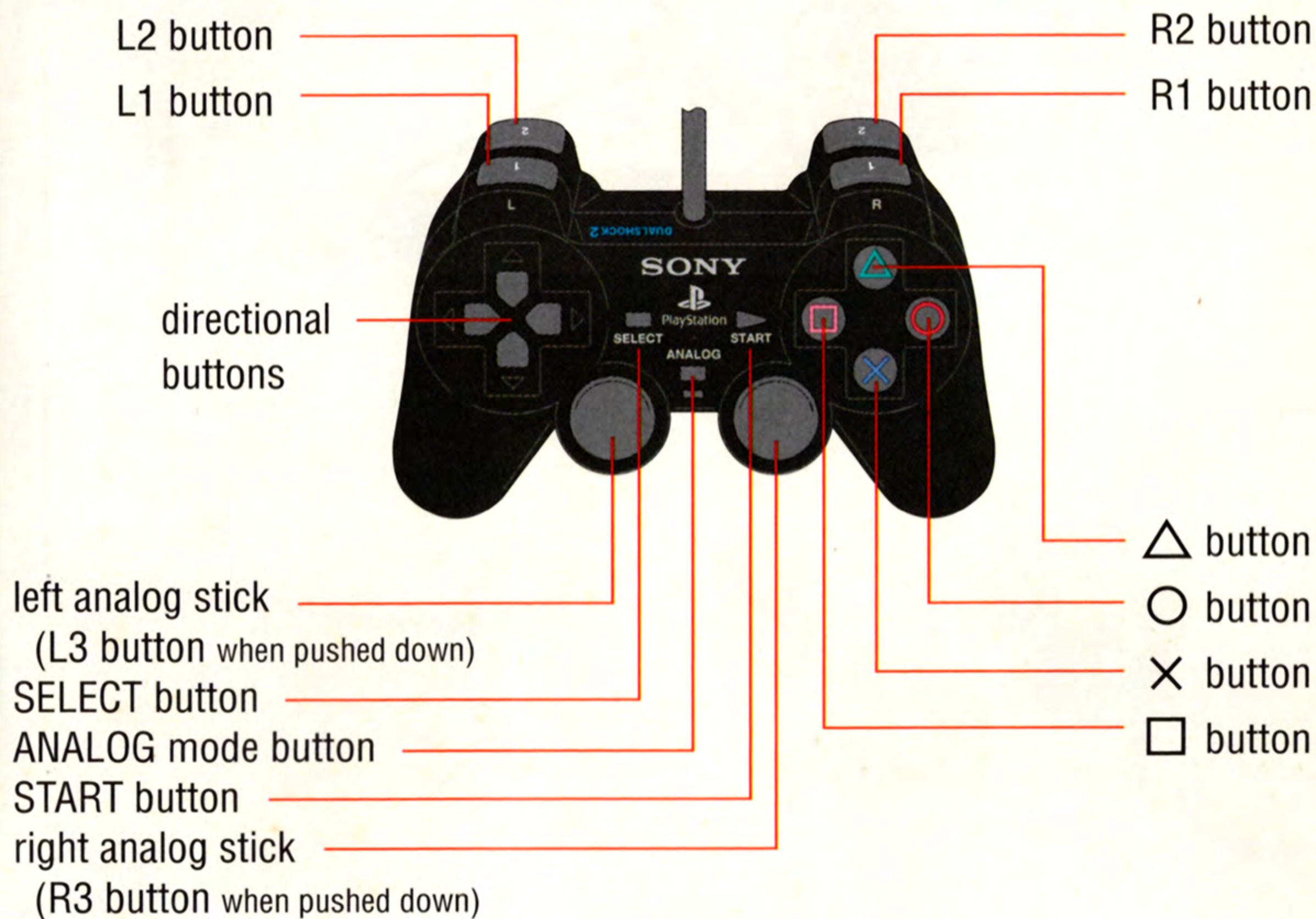
Set up your PlayStation®2 computer entertainment system according to the instructions supplied with your system. Check that the system is turned on (the on/standby indicator is green). Insert the *Walt Disney Pictures: Bolt* disc in the system with the label side facing up. Attach game controllers and other peripherals as appropriate. Follow the on-screen instructions and refer to this manual for information on using the software.

Memory Card (8MB)(for PlayStation®2)

To save game settings and progress, insert a memory card (8MB)(for PlayStation®2) into MEMORY CARD slot 1 of your PlayStation®2 system. You can load saved game data from the same memory card or any memory card (8MB)(for PlayStation®2) containing previously saved games.

STARTING UP

DUALSHOCK[®]2 ANALOG CONTROLLER CONFIGURATIONS



This game supports the analog mode and the vibration feature of the DUALSHOCK[®]2 analog controller.

To use the vibration feature, turn on VIBRATION under OPTIONS.

FADE IN:

Rescue Penny's Father from the Evil Calico!

** Scooter not in game.*



*Saving the world
in style!*



Don't worry you're with me.

Hurry! The fate of Penny's father is in your hands!

Rescue Penny's father from the clutches of Calico and save the world from destruction. Hack computers and battle the forces of evil from Italy to a hidden island in Oceania in multiple action-packed episodes, just like in the television series from the feature film.

But be careful - you'll need all of Bolt's super powers, and all of Penny's wits, to keep Penny from falling into the hands of Calico and his dastardly shadow organization.

FADE IN:

Mode of Play

Single-Player - Play as either Bolt or Penny in 25 exciting episodes. The setting and mission of each episode will determine which character you play.

ACT I:

Start the Adventure

Once the game starts, the Main Menu will give you the following choices:

- **Play Game** Start a new game or load a previously saved game.
- **Minigames** Play the BOLT minigames.
- **Options** Access volume controls and more.
- **Extras** Access previously viewed cut scenes, Bolt movie trailer, and more.

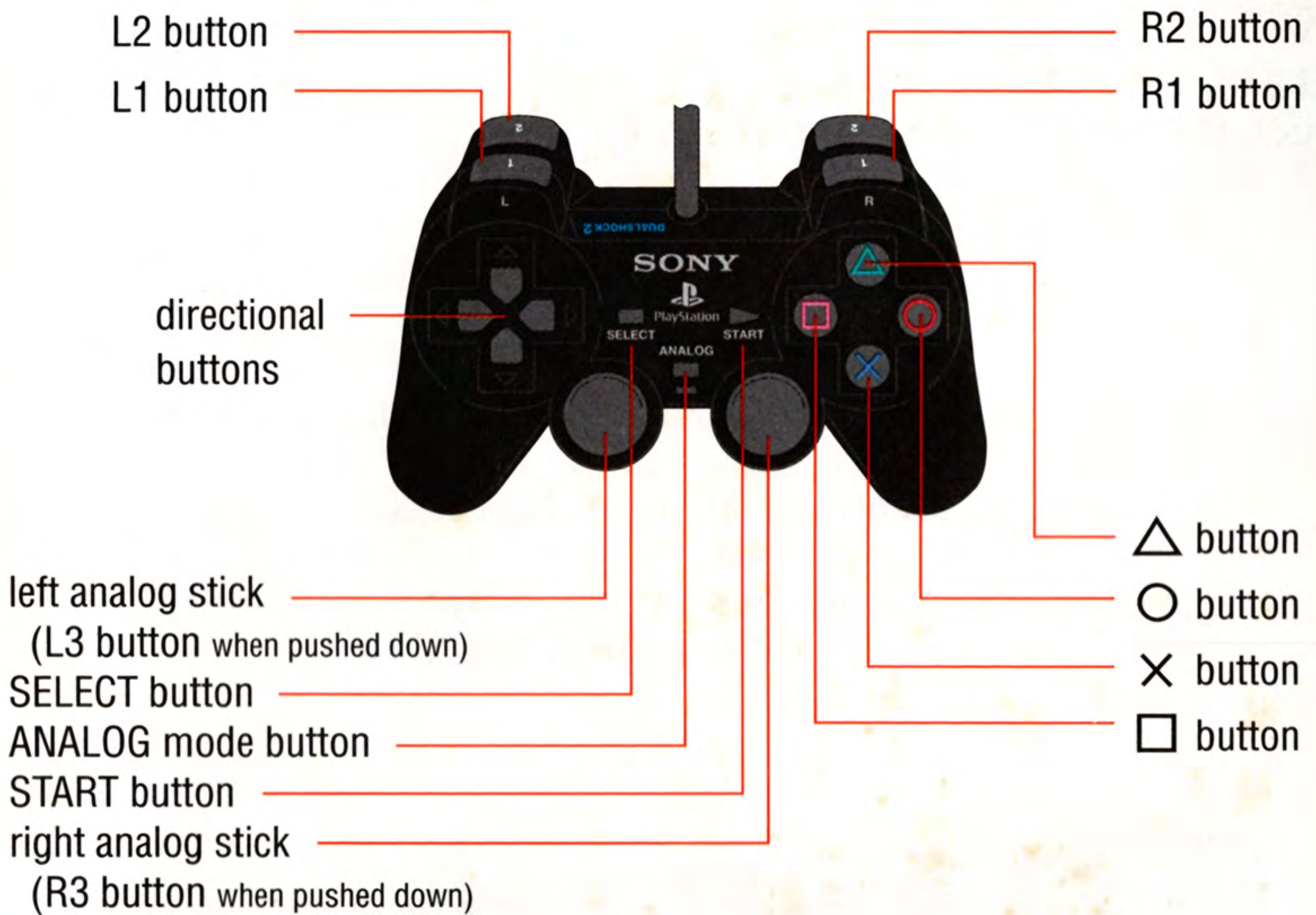


Play Game!

ENTER:

Bolt's Controls

Use Bolt's super abilities to protect Penny and rescue her father.



Extra Bolt Powers

Move
Sprint
Jump
Double Jump
Jump - Dash
Weak Attack
Strong Attack
Finishing Move
Ground Pound
Sonic Bark
Laser Vision
Invulnerability
Super Powers

Left analog stick

Hold down **R1 button**

\times button

$\times + \times$ buttons

$\times + \times + \square$ buttons

\square button

Δ button

\circ button then Δ , \circ , \times , or **\square button**

\times button, then **R2 button**

L2 button

L1 button

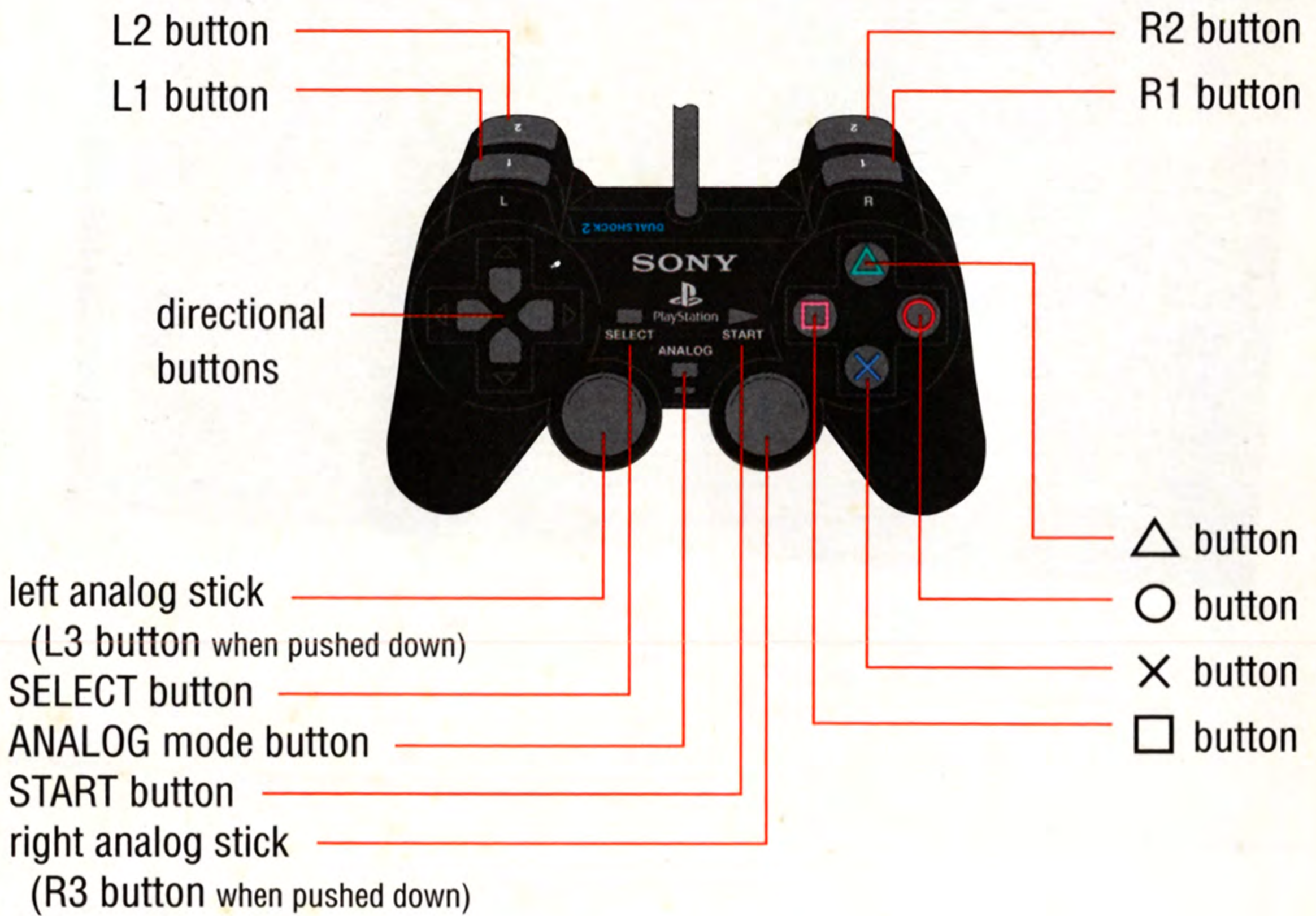
R2 button

Press both **analog sticks** down after filling the Combo meter

ENTER:

Penny's Controls

Bolt may have super abilities, but Penny has the brains and gadgets, such as the motorized Wheel Bar.



Extra Penny Powers

Move
Jump
Block
Double Jump
Basic Attack
Enhanced Vision
Sneak
Use Wheel Bar
Gas Grenade
Techno-Camo

Left analog stick

× button

R2 button

×+× button

□ button

△ button

Hold down **R1 Button** while moving

○ button

L2 button

L1 button

FADE IN:
H.U.D.



FADE OUT:

ENTER:

Pick-Ups

Collect health and energy fills as you make your way through each mission. Nine fills will replenish your health and energy completely.

- **Health and energy capsules** - refills only a portion of your health or energy
- **Health and energy bar upgrades** - increases total health or energy capacity

Note: Penny does not have a health bar. A single hit or capture will defeat her.

FADE IN:

Environments

Use all of Bolt's skills and Penny's wits to complete the game's missions and rescue Penny's father.



Russia: Keep Calico from carrying out his dastardly plans.



Italy: Crash a meeting of Calico's men.



Oceania: Reach Penny's father on this hidden island before it's too late.



Belize: Avoid capture in the Mayan Temple.



China: Sink Calico's nuke-carrying ship and hack his computer system.

ENTER:

Villains

Beware! There are lots of nasty villains who will try to stop you from completing your missions.



Disky - Avoid his sticking bombs at all costs.



Glovey - Watch out for his swipe.



Starry - His ninja throwing stars can cause serious damage.



Stompy - Don't get stomped by his explosive boots.



Proddy - Make sure to dodge her spears.



Bully - Careful of his whip - he's great with it.

Also watch out for these hazards:

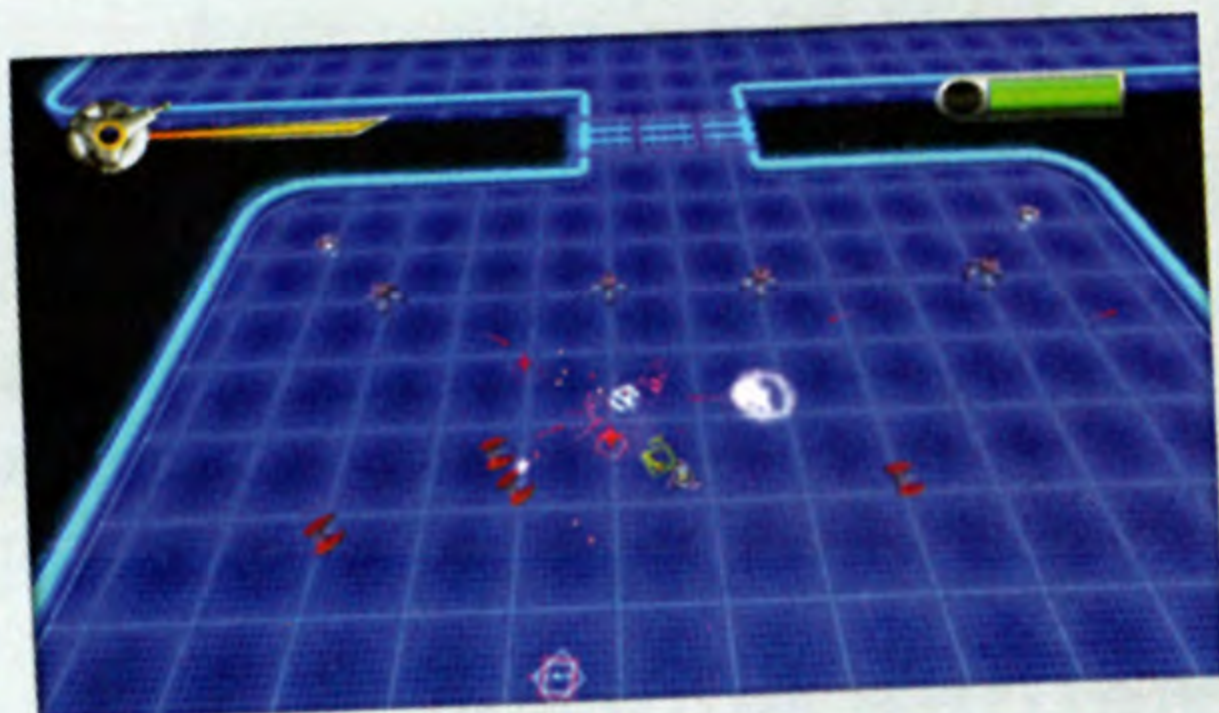
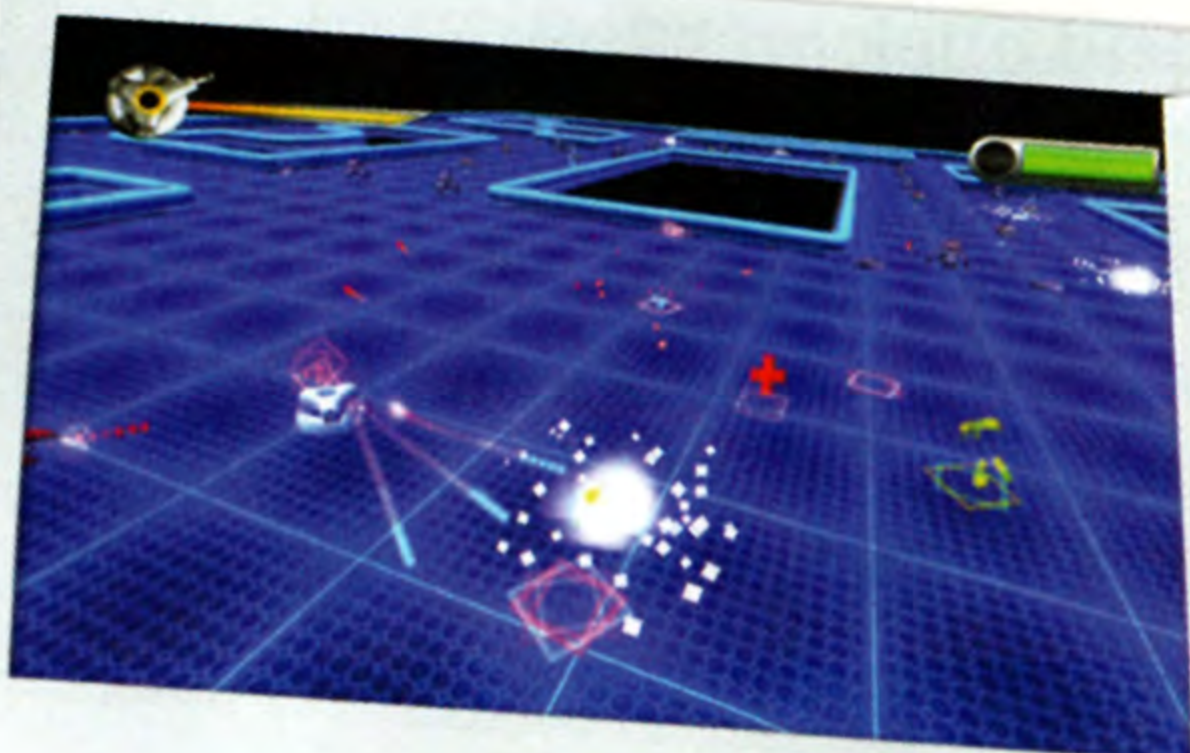
- Hoverbot - Beware of these mini helicopters.
- Laser Turret - Watch out for these lasers.
- Grenade Launcher - Its grenades may bounce, but they also explode with force.
- Bouncing Betty Mine - Keep your eyes peeled for these bouncing mines.

FADE OUT: EXIT ACT I

ACT II: FADE IN

Minigames

In some levels, you'll have to hack into different computer systems to continue on your mission.



These are virtual world minigames which the player is required to complete in order to progress. These minigames have their own HUD, pick-ups, and weapon upgrades.

The pick-ups include health and energy, as well as weapon upgrades. Weapon upgrades include a bullet spreader, which splits the single fire into a triple fire shot, and a rapid fire upgrade which doubles the current fire rate. These upgrades can also be mixed to enhance the effect. For example, if you pick up a triple fire shot and then pick up a rapid fire shot, you are now upgraded with a rapid fire triple shot. There is also a "bomb" attack which is used by pressing the **R1 button** or **R2 button**. This attack destroys all enemies within a certain radius, but it also slows you down for a few seconds and consumes all of your energy.

Game varies in amount of floors required to complete the hack. Once all floors are cleared, the hack ends and you can resume control of Penny.

FADE TO BLACK:

Go to **BoltVideoGame.com** for more tips, details, and activities.

Customer Support Information

Internet Support

To access support for Disney Interactive Games on the World Wide Web, point your browser to **www.disney.com/videogames** and click on "Support" at the top of the page.

Game Hints and Tips

Game hints and tips are available on our Customer Support website. To access Game Hints and Tips on the World Wide Web, point your browser to **www.disney.com/videogames** and click on "Support" at the top of the page.

Mailing Address

If you wish to write us, our address is:

**Disney Interactive Studios Customer Support
500 South Buena Vista Street
Burbank, CA 91521-9323**

Telephone Support

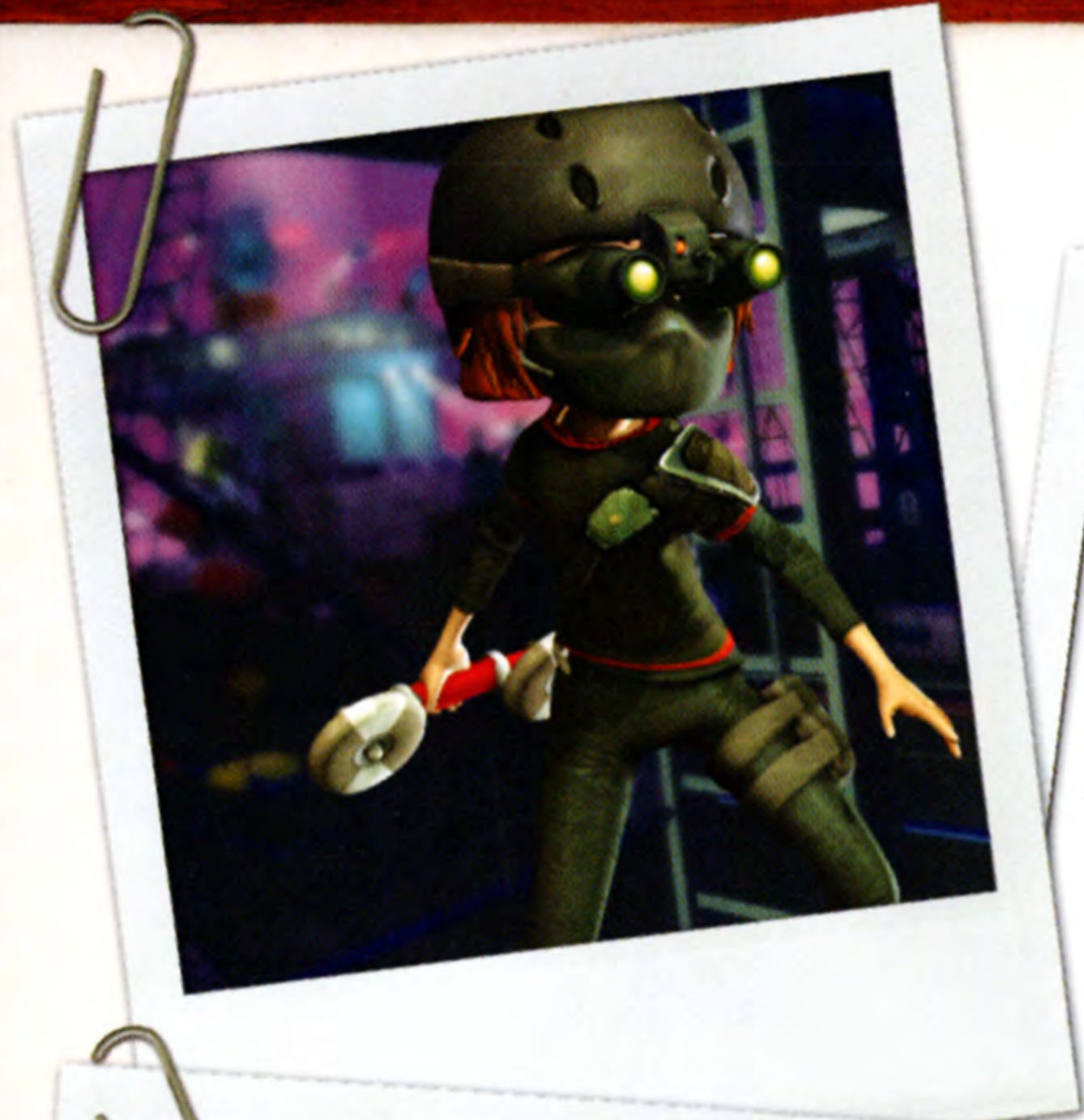
You may contact Customer Support at **(866) 252-8108**. If you need additional information, our Customer Support staff for the U.S. and Canada is available Monday through Friday from 8:30 a.m. to 5:30 p.m. (Pacific Time).

TTY/TDD Users

Please contact us by telephone through your local relay service. Customer Support staff for TTY/TDD users is available Monday through Friday 8:30 a.m. to 5:30 p.m. (Pacific Time). Our toll free number is **(866) 252-8108**.

Limited Warranty

PUBLISHER WARRANTS THE RECORDING MEDIUM ON WHICH THE SOFTWARE IS RECORDED TO BE FREE FROM DEFECTS IN MATERIALS AND WORKMANSHIP UNDER NORMAL USE FOR A PERIOD OF NINETY (90) DAYS FROM THE DATE OF PURCHASE AS EVIDENCED BY A COPY OF THE SALES RECEIPT OR PACKING SLIP. PUBLISHER'S ENTIRE LIABILITY AND YOUR EXCLUSIVE REMEDY WILL BE REPLACEMENT OF THE DEFECTIVE RECORDING MEDIUM(S) OR REFUND OF THE PURCHASE PRICE (AT PUBLISHER'S ELECTION) UPON RETURN OF THE SOFTWARE TO PUBLISHER WITH A COPY OF YOUR PROOF OF PURCHASE. PUBLISHER WILL HAVE NO RESPONSIBILITY TO REPLACE A RECORDING MEDIUM DAMAGED BY ACCIDENT, ABUSE OR MISAPPLICATION. ANY IMPLIED WARRANTIES AND/OR CONDITIONS ON THE RECORDING MEDIUM, INCLUDING THE IMPLIED WARRANTIES AND/OR CONDITIONS OF MERCHANTABILITY AND FITNESS FOR A PARTICULAR PURPOSE, ARE LIMITED IN DURATION TO NINETY (90) DAYS FROM THE DATE OF PURCHASE OR DELIVERY. THIS WARRANTY GIVES YOU SPECIFIC LEGAL RIGHTS, AND YOU MAY ALSO HAVE OTHER RIGHTS WHICH VARY FROM JURISDICTION TO JURISDICTION. YOU EXPRESSLY ACKNOWLEDGE AND AGREE THAT USE OF THE SOFTWARE IS AT YOUR SOLE RISK. THE SOFTWARE AND RELATED DOCUMENTATION ARE PROVIDED "AS IS" AND WITHOUT WARRANTIES AND/OR CONDITIONS OF ANY KIND EITHER EXPRESS OR IMPLIED. PUBLISHER EXPRESSLY DISCLAIMS ALL WARRANTIES AND/OR CONDITIONS, EXPRESS OR IMPLIED, WITH RESPECT TO THE SOFTWARE AND RELATED DOCUMENTATION, INCLUDING, BUT NOT LIMITED TO, THE IMPLIED WARRANTIES AND/OR CONDITIONS OF MERCHANTABILITY AND FITNESS FOR A PARTICULAR PURPOSE. PUBLISHER DOES NOT WARRANT THAT THE FUNCTIONS CONTAINED IN THE SOFTWARE WILL BE UNINTERRUPTED OR ERROR-FREE, OR THAT DEFECTS IN THE SOFTWARE WILL BE CORRECTED. FURTHERMORE, PUBLISHER DOES NOT WARRANT OR MAKE ANY REPRESENTATIONS REGARDING THE USE OR THE RESULTS OF THE USE OF THE SOFTWARE AND RELATED DOCUMENTATION IN TERMS OF THEIR CORRECTNESS, ACCURACY, RELIABILITY, OR OTHERWISE. THE LIMITATIONS OF LIABILITIES DESCRIBED IN THIS SECTION ALSO APPLY TO THE THIRD PARTY SUPPLIERS OF MATERIALS USED IN THE SOFTWARE. NO ORAL OR WRITTEN INFORMATION OR ADVICE BY PUBLISHER OR AN AUTHORIZED REPRESENTATIVE OF PUBLISHER SHALL CREATE WARRANTIES AND/OR CONDITIONS OR IN ANY WAY INCREASE THE SCOPE OF THIS LIMITED WARRANTY. YOU (AND NOT PUBLISHER) ASSUME THE ENTIRE COST OF ALL NECESSARY SERVICING, REPAIR OR CORRECTION. SOME JURISDICTIONS DO NOT ALLOW THE EXCLUSION OF IMPLIED WARRANTIES, SO THE ABOVE EXCLUSION MAY NOT APPLY TO YOU. UNDER NO CIRCUMSTANCES, INCLUDING NEGLIGENCE, SHALL PUBLISHER BE LIABLE FOR ANY INDIRECT, INCIDENTAL, SPECIAL OR CONSEQUENTIAL DAMAGES THAT RESULT FROM THE USE OF, OR THE INABILITY TO USE, THE SOFTWARE OR RELATED DOCUMENTATION, EVEN IF PUBLISHER OR AN AUTHORIZED REPRESENTATIVE OF PUBLISHER HAS BEEN ADVISED OF THE POSSIBILITY OF SUCH DAMAGES. SOME JURISDICTIONS DO NOT ALLOW THE LIMITATION OR EXCLUSION OF LIABILITY OR INCIDENTAL OR CONSEQUENTIAL DAMAGES, SO THE ABOVE LIMITATION OR EXCLUSION MAY NOT APPLY TO YOU. IN NO EVENT SHALL PUBLISHER'S TOTAL LIABILITY TO YOU FOR ALL DAMAGES, LOSSES, AND CAUSES OF ACTION [WHETHER IN CONTRACT, TORT (INCLUDING NEGLIGENCE) OR OTHERWISE] EXCEED THE AMOUNT PAID BY YOU FOR THE SOFTWARE. IF YOU NEED TO REPLACE A USER-DAMAGED GAME DISC, PLEASE CALL THE NUMBER LISTED UNDER TELEPHONE SUPPORT. THERE IS A \$20.00 FEE TO REPLACE A USER-DAMAGED GAME DISC.



BoltVideoGame.com



Disney Interactive Studios
500 S. Buena Vista St., Burbank, CA 91521

© Disney.



8000554