

ALIEN 3™



INSTRUCTION BOOKLET



SUPER NINTENDO
ENTERTAINMENT SYSTEM

WARNING: PLEASE READ THE ENCLOSED CONSUMER INFORMATION AND PRECAUTIONS BOOKLET CAREFULLY BEFORE USING YOUR NINTENDO® HARDWARE SYSTEM OR GAME PAK.



LICENSED BY



NINTENDO, SUPER NINTENDO ENTERTAINMENT SYSTEM AND THE OFFICIAL SEALS ARE REGISTERED TRADEMARKS OF NINTENDO OF AMERICA INC.
©1991 NINTENDO OF AMERICA INC.

THIS OFFICIAL SEAL IS YOUR ASSURANCE THAT NINTENDO HAS APPROVED THE QUALITY OF THIS PRODUCT. ALWAYS LOOK FOR THIS SEAL WHEN BUYING GAMES AND ACCESSORIES TO ENSURE COMPLETE COMPATIBILITY WITH YOUR SUPER NINTENDO ENTERTAINMENT SYSTEM. ALL NINTENDO PRODUCTS ARE LICENSED BY SALE FOR USE ONLY WITH OTHER AUTHORIZED PRODUCTS BEARING THE OFFICIAL NINTENDO SEAL OF QUALITY.

THE ALIEN HORROR LIVES...AND THRIVES!

YOU ARE RIPLEY, A C-3 GRADE LIEUTENANT FOR THE WEYLAND-YUTANI CORPORATION. AFTER BARELY SURVIVING AN ENCOUNTER WITH THE ALIEN XENOMORPH LIFE FORMS, YOU WERE RETURNING TO EARTH IN HYPERSLEEP ABOARD YOUR SHIP, THE SULACO. THE SULACO MALFUNCTIONED, JETTISONING THE EMERGENCY ESCAPE VEHICLE WITH THE CREW'S CRYOTUBES TOWARDS FIORINA "FURY" 161, A NEARLY ABANDONED MAXIMUM SECURITY WORK PRISON DEEP IN SPACE. YOU AWOKE TO FIND YOURSELF STRANDED ON THIS ISOLATED PLANET, THE ONLY SURVIVOR OF THE CRASH.

THE ONLY HUMAN SURVIVOR, THAT IS.

BECAUSE THE ALIENS YOU THOUGHT YOU'D LEFT BEHIND, THE LIVING NIGHTMARES YOU'D HOPED, YOU'D PRAYED, YOU'D NEVER SEE AGAIN ARE WITH YOU. AND THE HORROR YOU THOUGHT WAS OVER IS BEGINNING ANEW.

SOMEWHERE IN FURY 161, A QUEEN ALIEN IS SPAWNING DOZENS, IF NOT HUNDREDS, OF OFFSPRING THAT FEED ON FLESH. THE ALIEN EGG PODS ARE EVERYWHERE, BUT THAT'S ONLY THE START OF YOUR PROBLEMS. THE ALIENS MULTIPLY BY INVADING HUMAN BODIES AND GROWING INSIDE THEM, AND THEY'VE KIDNAPPED THE ENTIRE POPULATION OF FURY 161! YOU'VE LIVED THROUGH THIS ONCE BEFORE.

**SOMEHOW, YOU
SURVIVED. NOW,
YOU MUST FACE
THE ALIENS
AGAIN, AND STOP
THEM ONCE AND
FOR ALL!**

**ARMED WITH
YOUR WEAPONS
AND YOUR WITS,
YOU ARE ON
A MISSION OF
SURVIVAL. YOUR**



OBJECTIVES ARE CLEAR: FREE THE PRISONERS THAT HAVE BEEN TRAPPED IN ALIEN COCOONS, ELIMINATE THE ALIEN OFFSPRING THAT ARE INFESTING FURY 161, AND DESTROY THE QUEEN NESTING DEEP WITHIN THE PRISON. IF THIS WEREN'T ENOUGH, ALL OF THIS MUST BE COMPLETED BEFORE THE WEYLAND-YUTANI SHIP ARRIVES AND GIVES THE XENOMORPHS AN OPPORTUNITY TO ESCAPE AND INFEST OTHER WORLDS.

YOU ARE ENGAGED IN THE MOST FRIGHTENING LIFE OR DEATH STRUGGLE IMAGINABLE, AND THE ODDS ARE STACKED AGAINST YOU.

BEFORE YOU START STALKING YOUR PREY

1. MAKE SURE THE POWER SWITCH IS OFF.

**2. INSERT THE ALIEN3™ GAME PAK AS DESCRIBED
IN YOUR SUPER NINTENDO ENTERTAINMENT
SYSTEM™ MANUAL.**

3. TURN THE POWER SWITCH ON.

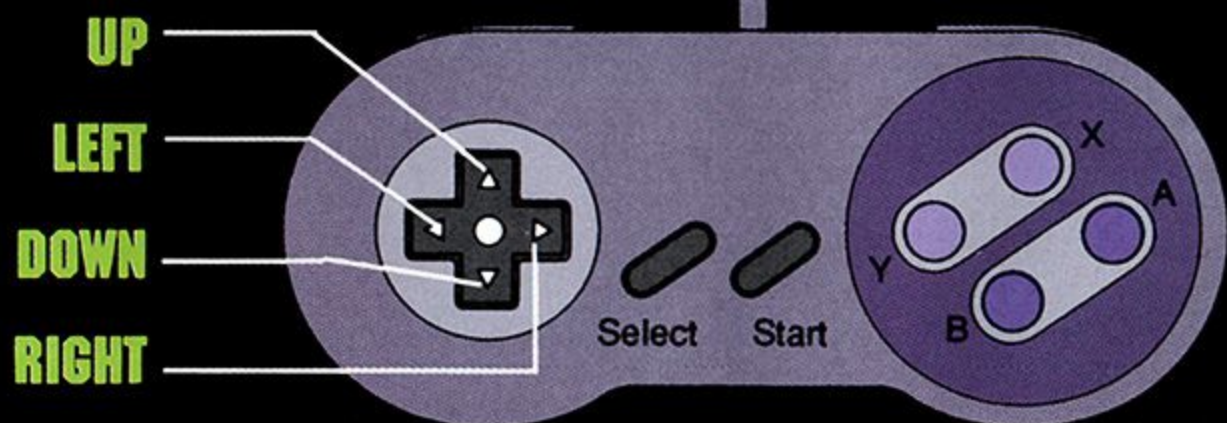
**WHEN YOU SEE THE ALIEN3™ LOGO ON THE SCREEN,
YOU WILL BE PRESENTED WITH TWO OPTIONS. USE
THE UP AND DOWN CONTROL PAD ARROWS TO HIGH-
LIGHT THE DESIRED OPTION AND USE THE START BUT-
TON TO CHOOSE ONE OF THE FOLLOWING:**

**GAME OPTIONS ENABLES YOU TO CHOOSE EASY, NOR-
MAL, OR HARD LEVELS OF DIFFICULTY, AND TO DECIDE
WHETHER YOU WANT STEREO OR MONAURAL SOUND.**

START GAME BEGINS THE GAME IMMEDIATELY.

**IF YOU WAIT A MOMENT, CHOOSING NEITHER OF THESE
OPTIONS, YOU'LL SOON SEE THE SULACO ON YOUR
SCREEN AND WITNESS THE EMERGENCY THAT STRANDED
YOU ON FURY 161. WHEN YOU'RE READY TO FACE THE
ALIEN HORRORS INFESTING THIS ISOLATED DEEP-SPACE
PRISON, PRESS THE START BUTTON.**

YOUR CONTROLS



TO WALK LEFT OR RIGHT, USE THE LEFT AND RIGHT CONTROL PAD ARROWS.

TO CROUCH, USE THE DOWN CONTROL PAD ARROW.

TO CRAWL TO THE LEFT OR RIGHT, PRESS DOWN TO CROUCH, THEN PRESS THE LEFT OR RIGHT CONTROL PAD ARROWS.

TO JUMP, PRESS THE B BUTTON.

TO CLIMB A CHAIN OR LADDER, USE THE UP CONTROL PAD ARROW.

TO ACTIVATE/DEACTIVATE MOTION TRACKER, PRESS THE SELECT BUTTON.

TO FIRE THE PULSE RIFLE, PRESS THE A BUTTON.

TO FIRE THE GRENADE LAUNCHER, PRESS THE X BUTTON.

TO FIRE THE FLAME THROWER, PRESS THE Y BUTTON.

TO USE THE BLOWTORCH, PRESS THE Y BUTTON, WHILE STANDING IN FRONT OF SOMETHING WELDABLE.

WHEN YOU FIRE A WEAPON, YOUR DISPLAY WILL AUTOMATICALLY SWITCH TO THE ICON OF THAT WEAPON AND INDICATE HOW MUCH AMMUNITION IS REMAINING.

TO SCROLL THROUGH THE AMMO ICONS WITHOUT FIRING THE WEAPONS, PRESS THE L OR R BUTTON.

TO PAUSE A GAME, PRESS THE START BUTTON.

TO RESUME A GAME, PRESS THE START BUTTON AGAIN.

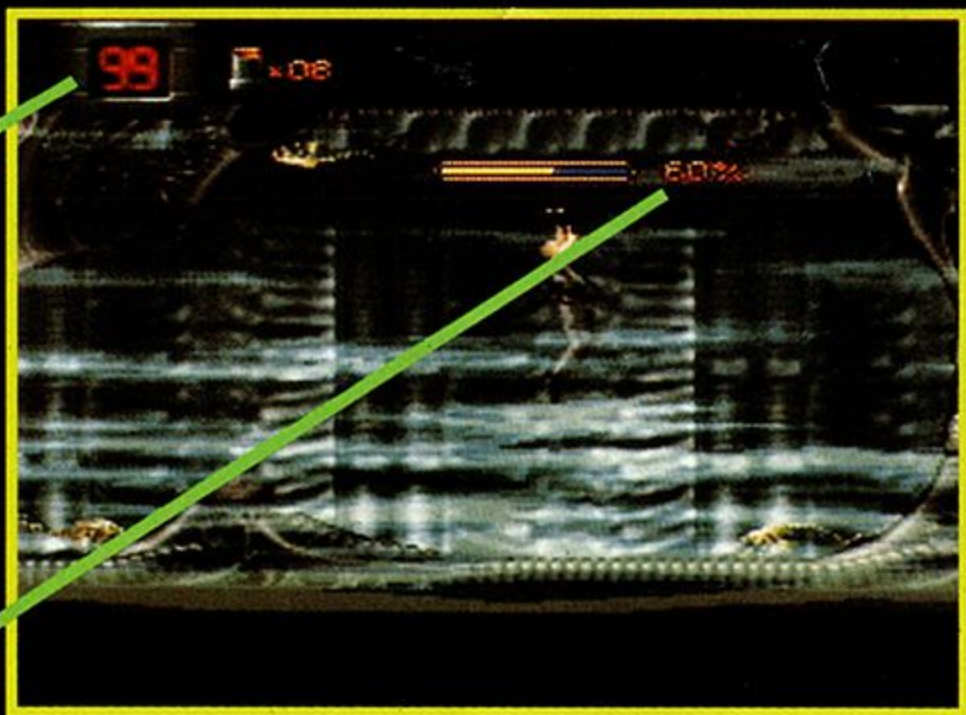
TO ABORT THE GAME PRESS THE SELECT BUTTON, START BUTTON, L BUTTON AND R BUTTON SIMULTANEOUSLY.

YOUR STATUS

AS YOU NEGOTIATE YOUR WAY THROUGH FURY 161 IN YOUR QUEST TO DESTROY THE QUEEN ALIEN AND HER NEST OF EGGS, YOU WILL BE HELPED BY HAVING THE FOLLOWING INFORMATION READILY AVAILABLE TO YOU:

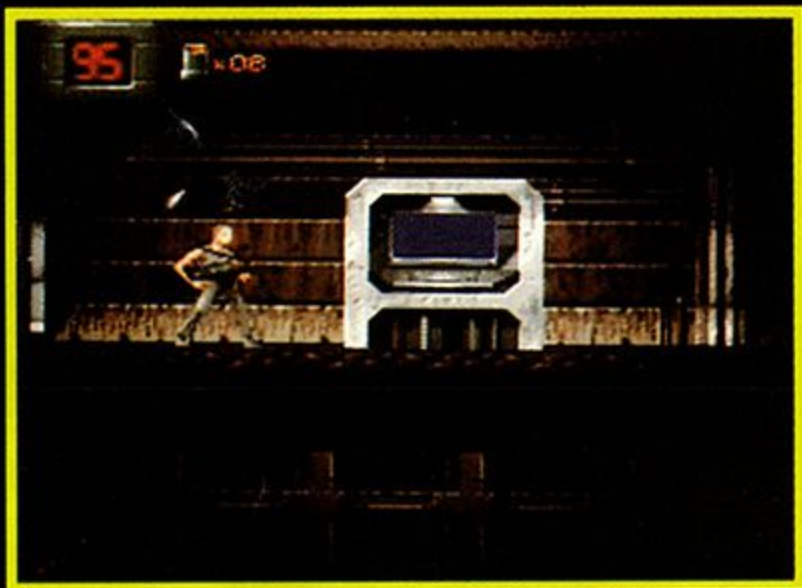
CURRENT
WEAPON /
AMMO
REMAINING

STRENGTH
REMAINING



DEFINING MISSION OBJECTIVES: TERMINAL POSTS

AT VARIOUS LOCATIONS THROUGHOUT FURY 161 YOU WILL FIND TERMINAL POSTS THAT WILL HELP YOU TRACK YOUR PROGRESS BY DEFINING SPECIFIC MISSIONS AS YOU NEGOTIATE YOUR WAY THROUGH THE PRISON COMPLEX.



TO ENTER A TERMINAL POST, POSITION YOURSELF IN FRONT OF THE TERMINAL AND PRESS THE UP CONTROL PAD ARROW. YOU WILL BE PRESENTED WITH A LIST OF MISSION OPTIONS.



TO CHOOSE A MISSION OPTION, USE THE UP AND DOWN CONTROL PAD ARROWS TO HIGHLIGHT THE MISSION YOU WANT, THEN PRESS THE X OR Y BUTTON. THE TERMINAL SCREEN WILL THEN DISPLAY A SENSOR SCAN OF THE AREA OF FURY 161 RELEVANT TO THE MISSION, AS WELL AS INFORMATION VITAL TO COMPLETING THE MISSION YOU HAVE CHOSEN. USE THE CONTROL PAD ARROWS TO VIEW THE COMPLETE SCAN. TRAPPED PRISONERS APPEAR AS GREEN DOTS ON THE SENSOR SCREEN.



TO ACCEPT A MISSION OR REVIEW OTHER MISSIONS, USE THE UP AND DOWN CONTROL PAD ARROWS WHEN THE TERMINAL POST PROMPT PRESENTS YOU WITH THOSE CHOICES.

ONCE YOU ACCEPT A MISSION, YOU MAY EXAMINE BLUEPRINTS FOR THE RELEVANT AREA OF FURY 161 OR REVIEW THE MISSION OBJECTIVES BY USING THE UP AND DOWN CONTROL PAD ARROWS.





TO EXIT THE TERMINAL AND RETURN TO GAME PLAY,
CHOOSE THE EXIT TERMINAL OPTION ON THE TERMI-
NAL PROMPT.

NOTE: TO SECURE THE SPECIFIC AREA OF FURY 161
YOU ARE EXPLORING, YOU MUST COMPLETE ALL
MISSIONS BEFORE MOVING ON TO THE NEXT STAGE
OF YOUR EXPLORATION. A TOTAL RECONNAISSANCE
OF FURY 161 IS COMPRISED OF SEVERAL STAGES,
EACH WITH SPECIFIC MISSION OBJECTIVES.

ALIEN BESTIARY

FURY161-C-MAINFRAME

INPUT: LT. RIPLEY

FILECODE: ALIEN GROWTH

CLEARANCE: ALLALL

SECURITY: CODE RED URGENT

ALL EYES

THIS IS LIEUTENANT RIPLEY OF THE WEYLAND-YUTANI CORPORATION. IF YOU'RE READING THIS FILE, IT PROBABLY MEANS I WASN'T ABLE TO DESTROY ALL OF THE ALIENS INFESTING FURY 161. MAYBE YOU'VE ENCOUNTERED THEM ALREADY, MAYBE NOT. EITHER WAY, IF YOU WANT TO SURVIVE, YOU'LL NEED THIS INFORMATION.

THE XENOMORPH ALIENS ARE HIGHLY EVOLVED KILLING MACHINES, THE MOST DEADLY BEINGS EVER ENCOUNTERED. EVEN THE YOUNGEST OF THESE CAN KILL, SO READ THIS FILE CAREFULLY.



THE FIRST STAGE OF ALIENS HATCH FROM THE ALIEN QUEEN'S LEATHERY EGG PODS. THEY SCURRY ON LONG, SPIDER-LIKE EGGS. I CALL THEM

FACE-HUGGERS FOR REASONS WHICH ARE ALL TOO OBVIOUS IF YOU'VE ENCOUNTERED THEM. IN THE ALIEN LIFE-CYCLE, FACE-HUGGERS ARE ESSENTIALLY CARRIERS: THEIR FUNCTION IS TO IMPLANT AN ALIEN PARASITE INSIDE A HOST, WHETHER HUMAN OR



OTHER. AFTER THAT, THEY DIE. IF A FACE-HUGGER ATTACHES ITSELF TO YOUR HEAD, SHAKE YOURSELF RAPIDLY IN ANY DIRECTION TO BREAK FREE, OR IT WILL CAUSE YOU SUFFOCATION DAMAGE.

A FACE-HUGGER'S PARASITE GROWS INSIDE ITS HOST UNTIL IT'S LARGE ENOUGH TO BREAK FREE THROUGH THE HOST'S CHEST. ONCE LOOSE, THESE SNAKE-LIKE CHEST BURSTERS ARE FAST AND AGGRESSIVE. THEY



REAR UP LIKE COBRAS TO ATTACK, STRIKING AT THE HEADS AND TORSOS OF THEIR TARGET, OR SPITTING ACID AT THEM.

WHEN THE CHEST BURSTERS GROW LARGER, THEY BEGIN TO LOOK MORE LIKE FULL-GROWN ALIENS,

BUT LACK THE DEADLY GRACE OF THEIR ELDERS. THEY'RE GANGLY AND OFF-BALANCE, LIKE BAMBIS. ALIEN BAMBIS HUG THE GROUND LIKE STALKING CATS.



EVEN THOUGH THEY'RE AWKWARD THEY'RE STILL EXTREMELY DANGEROUS. WHEN THEY'RE NEAR, LISTEN FOR THE "HISSING" SOUND WHICH

MEANS THEY'RE ABOUT TO SPIT.

WHEN THE BAMBIS GROW, THEIR STALKING GETS MORE ADVANCED AND MORE DEADLY. DEVELOPING



ALIENS ARE VERY DELIBERATE HUNTERS. THEY STICK LOW TO THE GROUND, AND CAN POUNCE IN AN INSTANT, SO DON'T LET THEM GET TOO CLOSE!

WHEN THESE BECOME FULLY DEVELOPED ALIENS,



THEY CAN ATTACH THEMSELVES TO WALLS AND CEILINGS, MEANING THEY CAN ATTACK YOU FROM ANY ANGLE, OFTEN BEFORE YOU EVEN

NOTICE THEY ARE NEAR. BEWARE.

A FURTHER COMPLICATION: THE ALIENS APPEAR TO DISPLAY ADDITIONAL EVOLUTIONARY QUALITIES BEYOND SIMPLE GROWTH AND CHANGING BEHAVIOR, AND EACH ENSUING GENERATION DISPLAYS MARKEDLY INCREASED AGGRESSIVENESS: FIRST-GENERATION ALIENS APPEAR DARK GREY, SECOND-GENERATION ALIENS DARK BLUE, THIRD-GENERATION ALIENS ARE DARK GREEN, AND FOURTH-GENERATION ALIENS,

EVIDENTLY THE MOST MATURE AND ADVANCED FORM,
ARE DEEP RED.



MOST IMPORTANTLY: THERE'S AN
ALIEN QUEEN NESTING IN THE LEAD
MOLD OF FURY 161'S CENTRAL
POWER GENERATOR. SINCE ONLY
THE QUEENS LAY EGGS, IF SHE IS DESTROYED, THE
ALIENS CAN'T MULTIPLY. I MUST THEREFORE EXTER-
MINATE HER TO PREVENT THE ALIENS FROM SPREAD-
ING FURTHER! MY PLAN IS TO STUN HER WITH AVAIL-
ABLE WEAPONRY, THEN DESTROY HER BY EITHER
CRUSHING HER IN THE PISTONS OR BURYING HER IN
MOLTEN LEAD.

THIS FILE WILL EITHER BE MY BLUEPRINT FOR

**SUCCESS OR MY EPITAPH. IF I HAVE FAILED, USE THIS
INFORMATION TO HELP YOU SURVIVE AND DESTROY
THE ALIENS. THEY MUST NOT ESCAPE FURY 161. THEIR
TERROR MUST END HERE.**

GOOD LUCK.

YOU'LL NEED IT.

RIPLEY OUT.

END OF FILE

FURY161-C-MAINFRAME

WEAPONS AND INVENTORY

FURY161-C-MAINFRAME

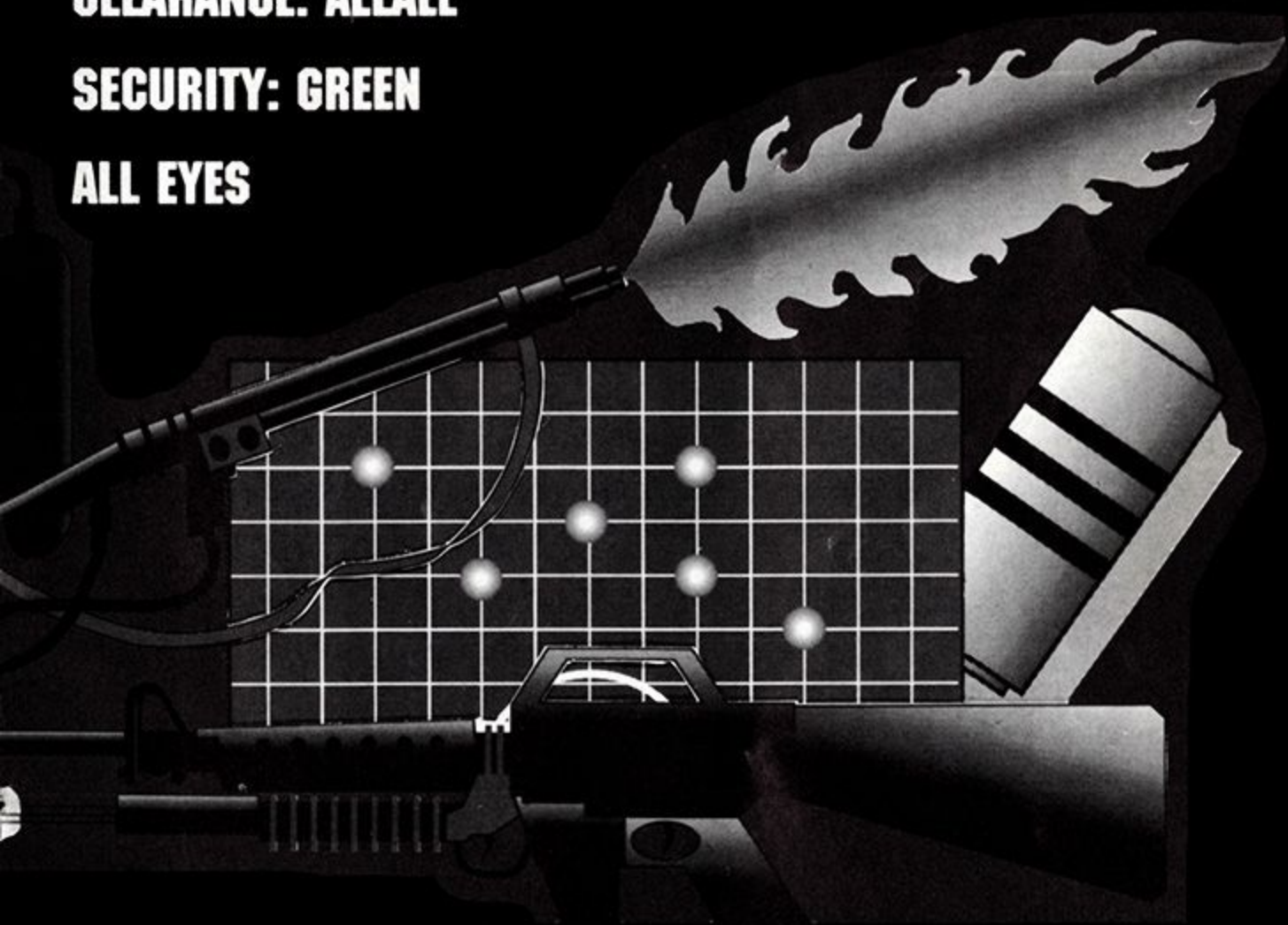
INPUT: WEYLAND-YUTANI

FILECODE: INVENTORY.W

CLEARANCE: ALLALL

SECURITY: GREEN

ALL EYES



PULSE RIFLE



CLEARANCE: STANDARD ISSUE

RATE OF FIRE: 4 SHOTS/SECOND

CLIP SIZE: 100 ROUNDS/CLIP

**RELOADING: TO RELOAD PICK UP RIFLE CLIPS LOCATED
THROUGHTOUT FURY 161**

GRENADE LAUNCHER



**CLEARANCE: STANDARD ISSUE; SUPPLEMENTAL
TO PULSE RIFLE**

RATE OF FIRE: 1 SHOT/SECOND

CLIP SIZE: 10 ROUNDS/CLIP

RELOADING: TO RELOAD PICK UP GRENADE CLIPS

FLAME THROWER



CLEARANCE: NON-STANDARD ISSUE

SECURITY INDICATIONS: MAINTAIN IN SEALED STORAGE AREAS

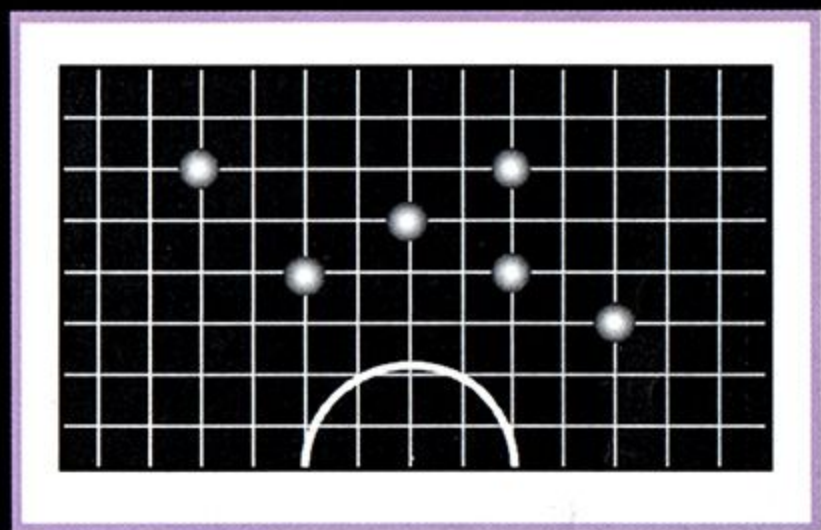
RATE OF FIRE: 0.5 LITER/SECOND

CANNISTER SIZE: 10 LITERS/CANNISTER

REFUELING: MULTIPLE FUELS, MANUAL OR AUTOMATIC

CAUTION: FUEL VARIES BY COLOR: BLUE FUEL PRODUCES LOW-POWERED FLAME, RED PRODUCES MEDIUM-POWERED FLAME, GREEN FUEL PRODUCES HIGH POWERED FLAME. PICK UP FUEL CANISTERS TO REFUEL.

MOTION TRACKER

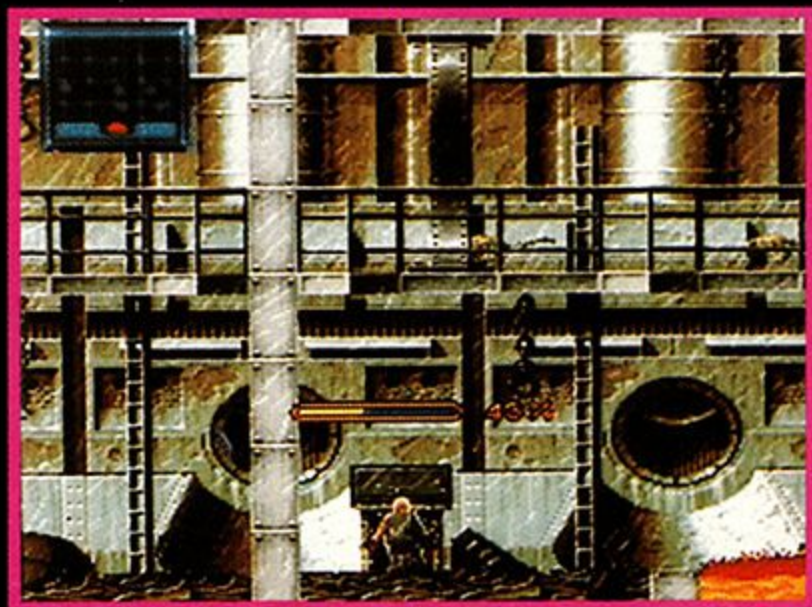


INDICATIONS: FOR SENSING MOVEMENT OF PERSONNEL AND/OR INTRUDERS THROUGHOUT FURY 161 WORK STATION

ACTIVATION: SELECT BUTTON

RADIUS OF EFFECTIVENESS: APPROXIMATELY 3 TIMES NORMAL VISIBILITY

BLOWTORCH



CLEARANCE: MAINTENANCE TEAM, STANDARD ISSUE

INDICATIONS: FOR SEALING AND/OR UNSEALING

DOORS, REPAIRING DAMAGED PIPES AND WIRING

RATE OF WELD: APPROXIMATELY 5 SECONDS

FUEL NOTICE: BLOWTORCHES POSSESS AN UNLIMITED

AMOUNT OF FUEL AND DO NOT NEED TO BE RELOADED

EXPLORING FURY 161

THE FURY 161 WORK STATION IS A COMPLEX NETWORK OF ROOMS, STORAGE AREAS, ELEVATOR SHAFTS AND AIR DUCTS. YOU WILL HAVE TO TAKE THE UTMOST CARE IN NEGOTIATING YOUR WAY THROUGH THE STATION: ALIENS COULD BE LURKING ANYWHERE!

TO OPEN DOORS, WALK INTO THEM AND PRESS THE UP CONTROL PAD ARROW. SOME MAY REQUIRE THE USE OF A BLOWTORCH TO OPEN THEM OR SECURE THEM BEHIND YOU.



AIR DUCTS PROVIDE YOU WITH SHORTCUTS BETWEEN AREAS OF FURY 161. TO ENTER AN AIR DUCT FROM ABOVE, POSITION YOURSELF NEXT TO THE LADDER THAT EMERGES FROM THE DUCT, AND PRESS THE DOWN CONTROL PAD ARROW. TO ENTER FROM BELOW, POSITION YOURSELF BELOW THE LADDER, JUMP AND PRESS THE UP CONTROL PAD ARROW.

SURVIVAL TIPS

BE METHODICAL: TRY TO ESTABLISH SAFE AREAS OF THE WORK STATION BY FIRST CLEARING OUT ONE ROOM COMPLETELY, SEALING IT OFF SO ALIENS CANNOT ENTER, THEN MOVING ON TO THE NEXT ROOM.

AIR DUCTS ARE GOOD WAYS TO AVOID PLACES WHERE THERE IS A HEAVY POPULATION OF ALIENS, BUT REMEMBER THAT THEY MAY BE USED BY ALIENS TOO, AND THAT THEY ARE CRAMPED PLACES: YOU WON'T BE ABLE TO JUMP OR DUCK.

BRING AN ALIEN HOME, FREE!



"The Making of Alien³" is an exclusive look behind the scenes of "Alien³". It's free when you buy the Limited Edition Alien/Aliens Collector's Set!

- Spectacular never before released behind-the-scenes footage.
- Incredible special effects.
- Exclusive interviews with Sigourney Weaver, the Alien creator H. R. Giger, and others.
- A look back at "Alien" and "Aliens".

Available now on videocassette.

\$39.98 SUGGESTED
RETAIL PRICE



©1992 FoxVideo, Inc. All Rights Reserved. FoxVideo™ and Twentieth Century Fox™ and their logos are trademarks of Twentieth Century Fox Film Corporation.

LJN, LTD. LIMITED WARRANTY

LJN, Ltd. (LJN) warrants to the original purchaser only of this LJN software product that the medium on which this computer program is recorded is free from defects in materials and workmanship for a period of ninety (90) days from the date of purchase. This LJN software program is sold "as is," without express or implied warranty of any kind, and LJN is not liable for any losses or damages of any kind resulting from use of this program. LJN agrees for a period of ninety (90) days to either repair or replace, at its option, free of charge, any LJN software product, postage paid, with proof of date of purchase, at its Factory Service Center. Replacement of the game pak, free of charge to the original purchaser (except for the cost of returning the game pak) is the full extent of our liability.

This warranty is not applicable to normal wear and tear. This warranty shall not be applicable and shall be void if the defect in the LJN software product has arisen through abuse, unreasonable use, mistreatment or neglect. THIS WARRANTY IS IN LIEU OF ALL OTHER WARRANTIES AND NO OTHER REPRESENTATIONS OR CLAIMS OF ANY NATURE SHALL BE BINDING ON OR OBLIGATE LJN. ANY IMPLIED WARRANTIES APPLICABLE TO THIS SOFTWARE PRODUCT, INCLUDING WARRANTIES OF MERCHANTABILITY AND FITNESS FOR A PARTICULAR PURPOSE, ARE LIMITED TO THE NINETY (90) DAY PERIOD DESCRIBED ABOVE. IN NO EVENT WILL LJN BE LIABLE FOR ANY SPECIAL, INCIDENTAL, OR CONSEQUENTIAL DAMAGES RESULTING FROM POSSESSION, USE OR MALFUNCTION OF THIS LJN SOFTWARE PRODUCT.

Some states do not allow limitations as to how long an implied warranty lasts and/or exclusions or limitations of incidental or consequential damages so the above limitations and/or exclusions of liability may not apply to you. This warranty gives you specific rights, and you may also have other rights which vary from state to state.

This warranty shall not be applicable to the extent that any provision of this warranty is prohibited by any federal, state or municipal law which cannot be pre-empted.

REPAIRS/ SERVICE AFTER EXPIRATION OF WARRANTY

If your game pak requires repair after expiration of the 90-day Limited Warranty Period, you may contact the Consumer Service Department at the number listed below. You will be advised of the estimated cost of repair and the shipping instructions.

COMPLIANCE WITH FCC REGULATIONS

This equipment generates and uses radio frequency energy and if not installed and used properly, that is, in strict accordance with the manufacturer's instructions, may cause interference to radio and television reception. It has been type tested and found to comply with the limits for a Class B computing device in accordance with the specifications in Subpart J of Part 15 of FCC Rules, which are designed to provide reasonable protection against such interference in a residential installation. However, there is no guarantee that interference will not occur in a particular installation. If this equipment does cause interference to radio or television reception, which can be determined by turning the equipment off and on, the user is encouraged to try to correct the interference by one or more of the following measures:

- Reorient the receiving antenna.
- Relocate the Super NES with respect to the receiver.
- Move the Super NES away from the receiver.
- Plug the Super NES into a different outlet so that the computer and receiver are on different circuits.

If necessary, the user should consult the dealer or an experienced radio/television technician for additional suggestions. The user may find the following booklet prepared by the Federal Communications Commission helpful: How to Identify and Resolve Radio-TV Interference Problems. This booklet is available from the U.S. Government Printing Office, Washington D.C. 20402, Stock No. 004-000-00345-4.

LJN Hotline/Consumer Services (516) 624-9300

Distributed and marketed by LJN, LTD.

71 Audrey Ave., Oyster Bay, N.Y. 11771

T2™

TERMINATOR 2 JUDGMENT DAY



3 billion lives will end on Judgment Day and The War Against the Machines will begin.

Terminate the T-1000... or it's hasta la vista, baby!



You can change history if you believe in no fate



Blast open the T-1000 like a tin can with your 10 gauge shotgun

When Spider-Man teams up with the X-Men, you know there's trouble... especially when the villainous Arcade has revenge on his mind!!!

SPIDER-MAN

X-MEN™ ARCADE'S REVENGE



Web-slinging, wall-climbing action required to get out of this mess



Wolverine's razor-sharp Adamantium claws slice through this thug-in-a-box



THE SIMPSONS

BART'S NIGHTMARE



If you've got too much homework, do what Bart does - go to sleep instead!

Join "Bart's Nightmare" and zoom through the sky as Bartman, enter the world of Itchy and Scratchy, battle Homer Kong and more!



The Blue Demon is no match for you in the Temple of Maggie



Bartzilla's not just big and green... he's angry!

SUPER NINTENDO
ENTERTAINMENT SYSTEM



Acclaim
entertainment, inc.

Marketed by LJN, Ltd., Distributed by Acclaim Distribution, Inc., 71 Audrey Avenue, Oyster Bay, New York 11771

Printed in Japan.