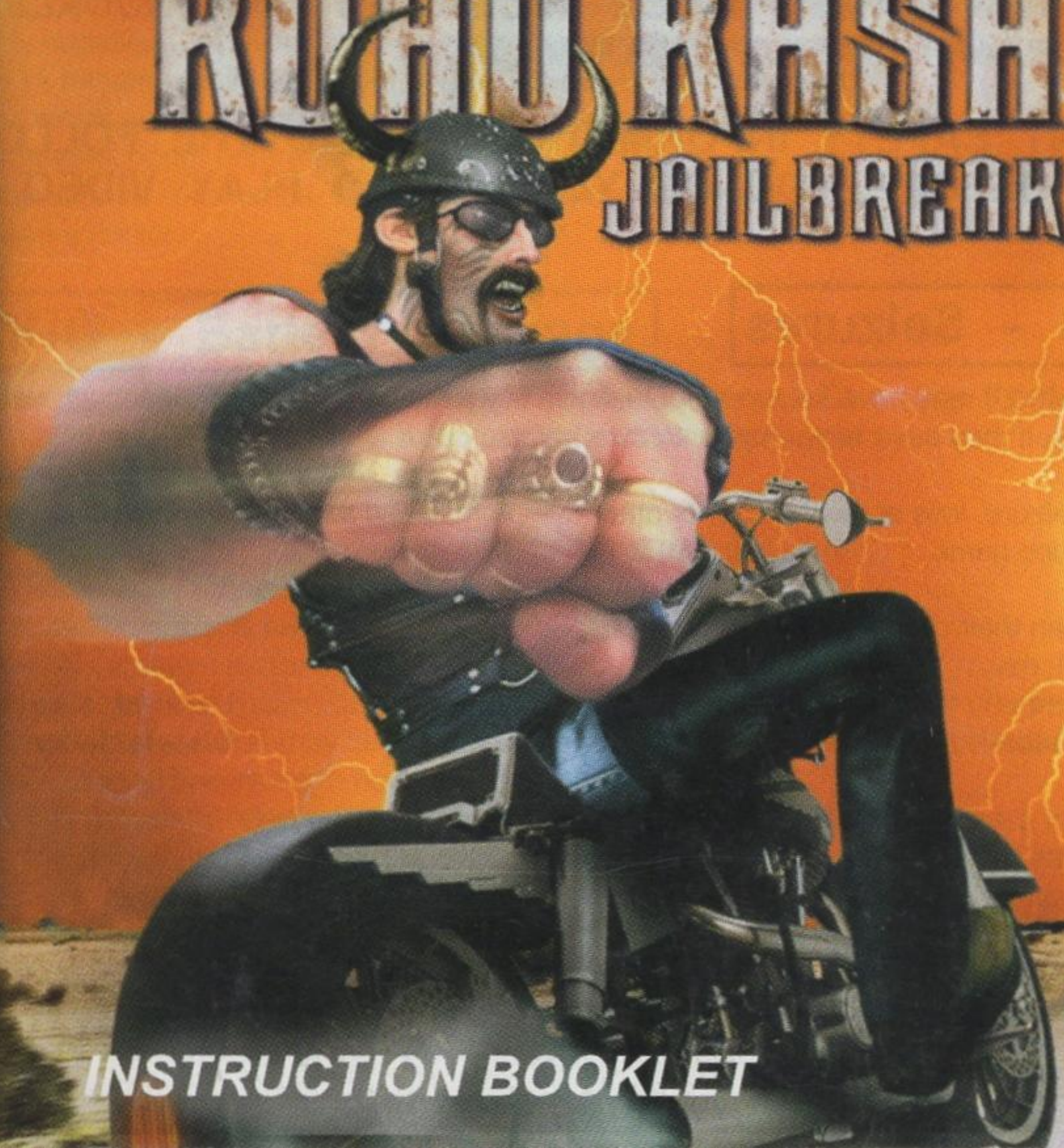


GAMEBOY ADVANCE

ROAD RASH™ JAILBREAK™



INSTRUCTION BOOKLET



WARNING: PLEASE CAREFULLY READ THE PRECAUTIONS BOOKLET INCLUDED WITH THIS PRODUCT BEFORE USING YOUR NINTENDO® HARDWARE SYSTEM, GAME PAK OR ACCESSORY. THIS BOOKLET CONTAINS IMPORTANT SAFETY INFORMATION.

IMPORTANT SAFETY INFORMATION - READ THE FOLLOWING WARNINGS BEFORE YOU OR YOUR CHILD PLAY VIDEO GAMES

⚠ WARNING - Seizures

Some people (about 1 in 4000) may have seizures or blackouts triggered by light flashes, such as while watching TV or playing video games, even if they have never had a seizure before.

Anyone who has had a seizure, loss of awareness, or other symptom linked to an epileptic condition should consult a doctor before playing a video game.

Parents should watch when their children play video games. Stop playing and consult a doctor if you or your child have any of the following symptoms:

Convulsions
Altered vision

Eye or muscle twitching
Involuntary movements

Loss of awareness
Disorientation

To reduce the likelihood of a seizure when playing video games:

1. Sit or stand as far from the screen as possible.
2. Play video games on the smallest available television screen.
3. Do not play if you are tired or need sleep.
4. Play in a well-lit room.
5. Take a 10 to 15 minute break every hour.

⚠ WARNING - Repetitive Motion Injuries

Playing video games can make your muscles, joints or skin hurt after a few hours. Follow these instructions to avoid problems such as Tendonitis, Carpal Tunnel Syndrome or skin irritation:

- Take a 10 to 15 minute break every hour, even if you don't think you need it.
- If your hands, wrists or arms become tired or sore while playing, stop and rest them for several hours before playing again.
- If you continue to have sore hands, wrists or arms during or after play, stop playing and see a doctor.

⚠ WARNING - Battery Leakage

Leakage of battery acid can cause personal injury as well as damage to your Game Boy. If battery leakage occurs, thoroughly wash the affected skin and clothes. Keep battery acid away from your eyes and mouth. Leaking batteries may make popping sounds.

To avoid battery leakage:

- Do not mix used and new batteries (replace all batteries at the same time).
- Do not mix alkaline and carbon zinc batteries.
- Do not mix different brands of batteries.
- Do not use nickel cadmium batteries.
- Do not leave used batteries in the Game Boy. When the batteries are losing their charge, the power light may become dim, the game sounds may become weak, or the display screen may be blank. When this happens, promptly replace all used batteries with new batteries.
- Do not leave batteries in the Game Boy or accessory for long periods of non-use.
- Do not leave the power switch on after the batteries have lost their charge. When you finish using the Game Boy, always slide the power switch OFF.
- Do not recharge the batteries.
- Do not put the batteries in backwards. Make sure that the positive (+) and negative (-) ends are facing in the correct directions. Insert the negative end first. When removing batteries, remove the positive end first.
- Do not dispose of batteries in a fire.



TEEN
MILD LANGUAGE
MILD VIOLENCE

THIS PRODUCT HAS BEEN RATED BY THE ENTERTAINMENT SOFTWARE RATING BOARD. FOR INFORMATION ABOUT THE ESRB RATING, OR TO COMMENT ABOUT THE APPROPRIATENESS OF THE RATING, PLEASE CONTACT THE ESRB AT 1-800-771-3772, OR VISIT WWW.ESRB.ORG.



THIS OFFICIAL SEAL IS YOUR ASSURANCE THAT NINTENDO HAS APPROVED THE QUALITY OF THIS PRODUCT. ALWAYS LOOK FOR THIS SEAL WHEN BUYING GAMES AND ACCESSORIES TO ENSURE COMPLETE COMPATIBILITY. LICENSED BY SALE FOR USE ONLY WITH OTHER AUTHORIZED PRODUCTS BEARING THE OFFICIAL NINTENDO SEAL OF QUALITY.

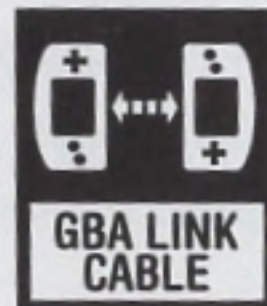
ELECTRONIC ARTS™



LICENSED BY



NINTENDO, GAME BOY, GAME BOY ADVANCE AND THE OFFICIAL SEAL ARE TRADEMARKS OF NINTENDO.
© 2001 NINTENDO. ALL RIGHTS RESERVED.



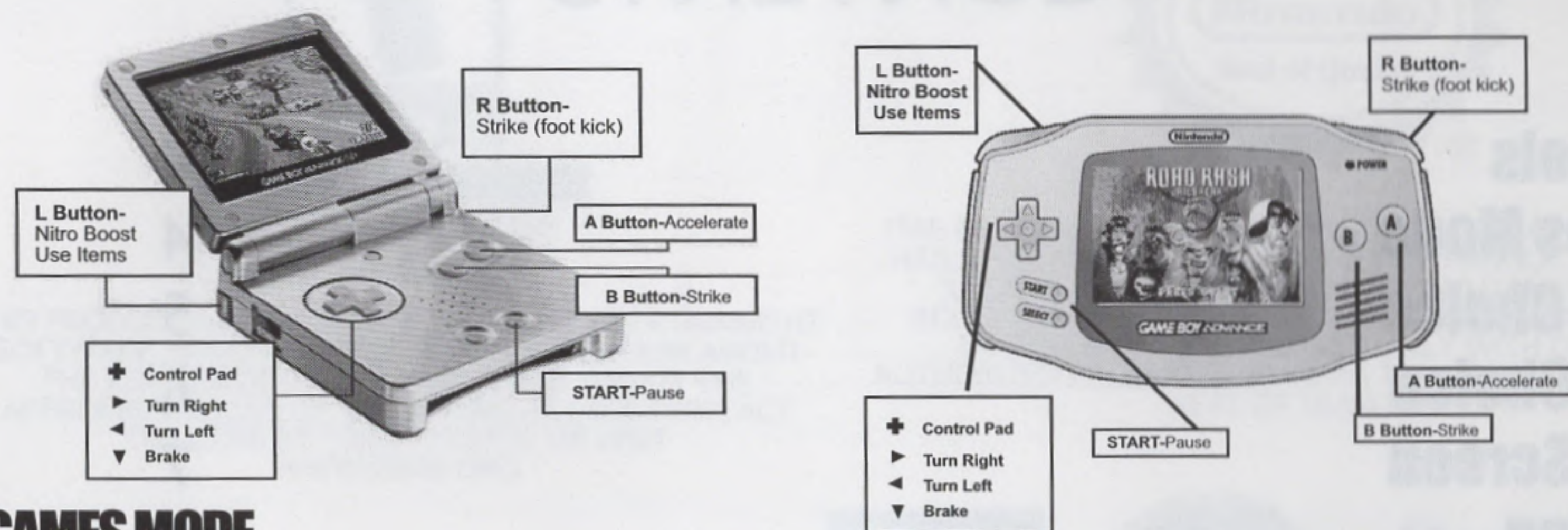
THIS GAME PAK INCLUDES A MULTI-PLAYER MODE WHICH REQUIRES A GAME BOY® ADVANCE GAME LINK® CABLE.

THIS GAME PAK WILL WORK ONLY WITH THE GAME BOY® ADVANCE VIDEO GAME SYSTEM.

CONTENTS

Controls	4
Games Mode	4
Biker Choice	5
Race Choice	6
Race Screen	7
Fighting	7
Bonus Items	8
Pause Menu	9
End of Race	9
Garage	10
Password	11
Tips	11

CONTROLS



GAMES MODE

WILD RACE

WILD RACE is a one-player game.

Select this option to choose a biker, a race, and a difficulty level to start the races.

In this game, you will win the coveted Great Bikers Convention trophy.

You will have to prove your good driving style and your fighting skills against your opponents.

Finally, you will have to defeat Fat Hoagie, the winner of last year's contest.

But watch your back, fearsome Marshall Lee won't let you slow down for a second.

Only the winner can pass to the next race.

COP PATROL

COP PATROL is a one-player game.

Select this option to become Marshall Lee and enforce the long arm of the law. Harass the good-for-nothings and make them fall from their bikes before the limit of your jurisdiction and you will be able to advance to the next race.

TIME ATTACK

You must reach the Check Points before the time is up. No fighting, no bonus... Just pure speed!

SURVIVAL

The ultimate challenge!!!

You must have a password to participate. When you have the password, be ready for a whole new level of competition.

MULTIPLAYER

In this game, you can compete against one friend in amazing races.

TIPS

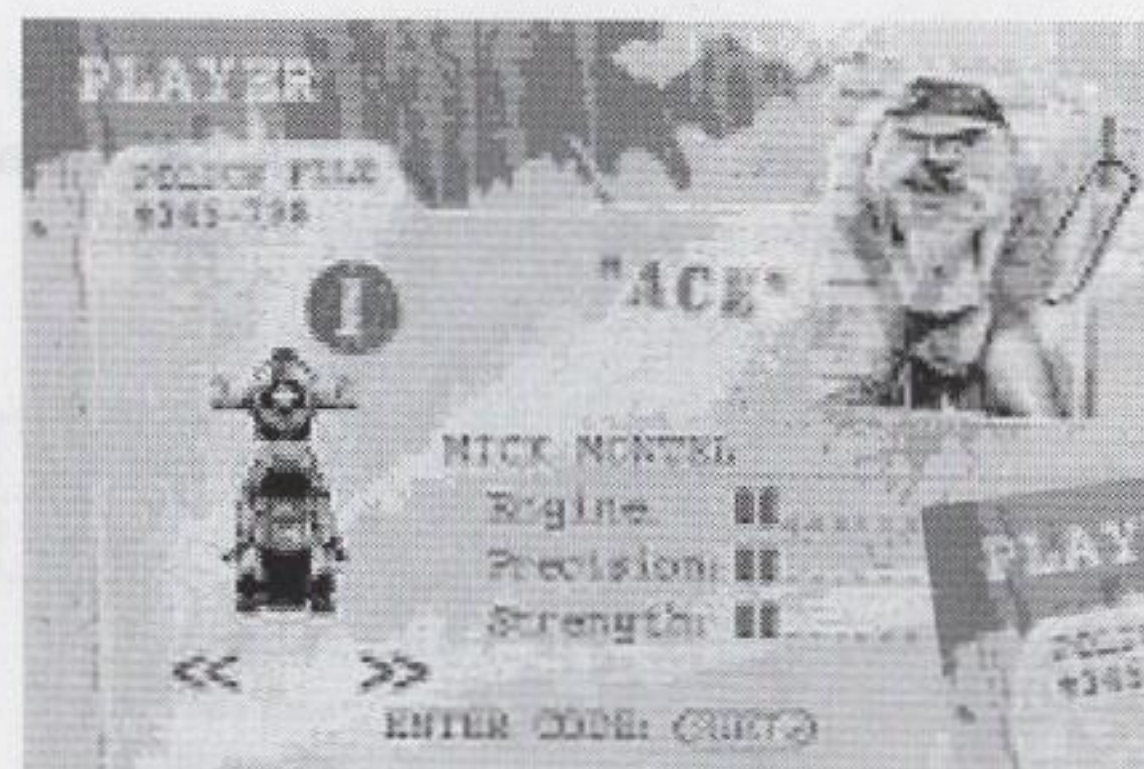
TIPS isn't a game, but proposes advice in order to increase your performance.

BIKER CHOICE

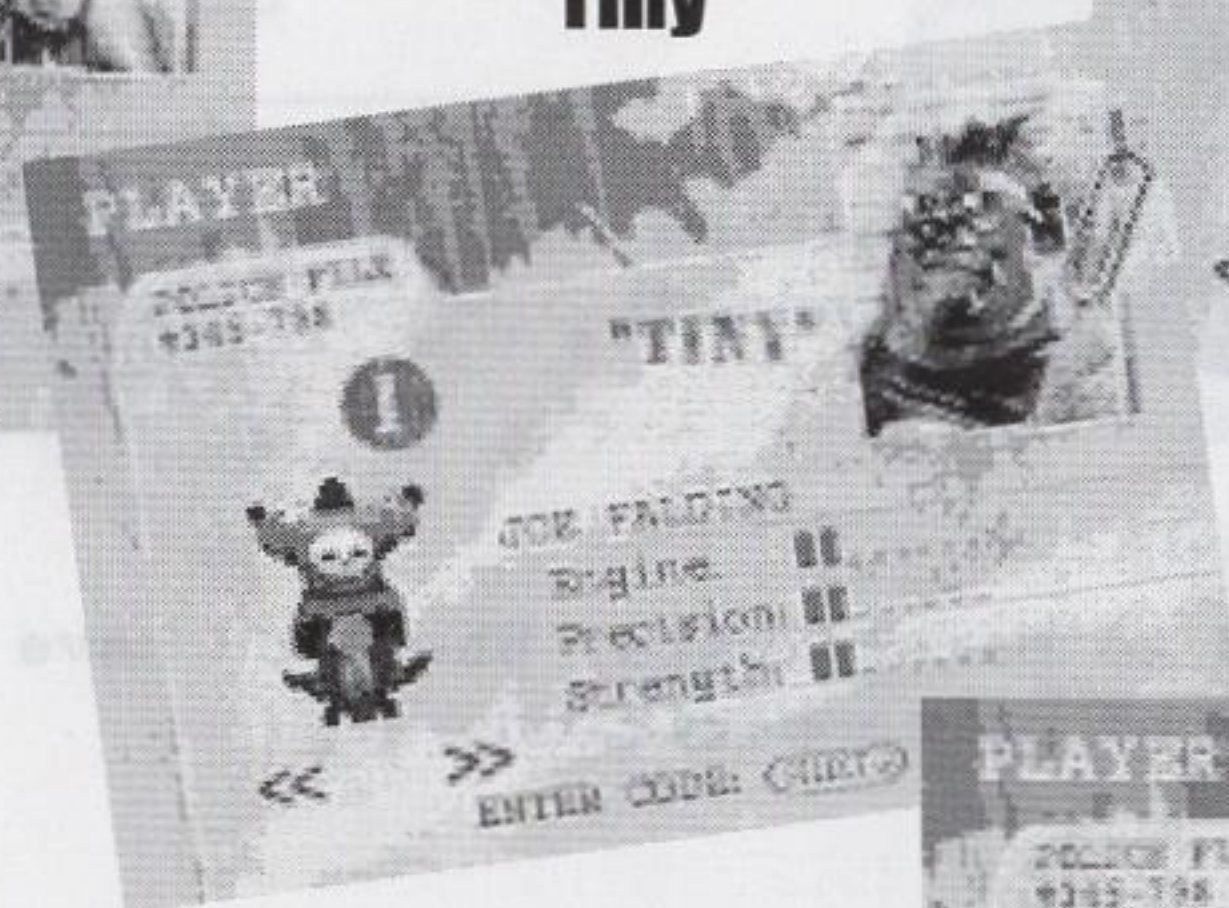
In games WILD RACE, TIME ATTACK and SURVIVAL, you can choose one of the three bikers:



Ace



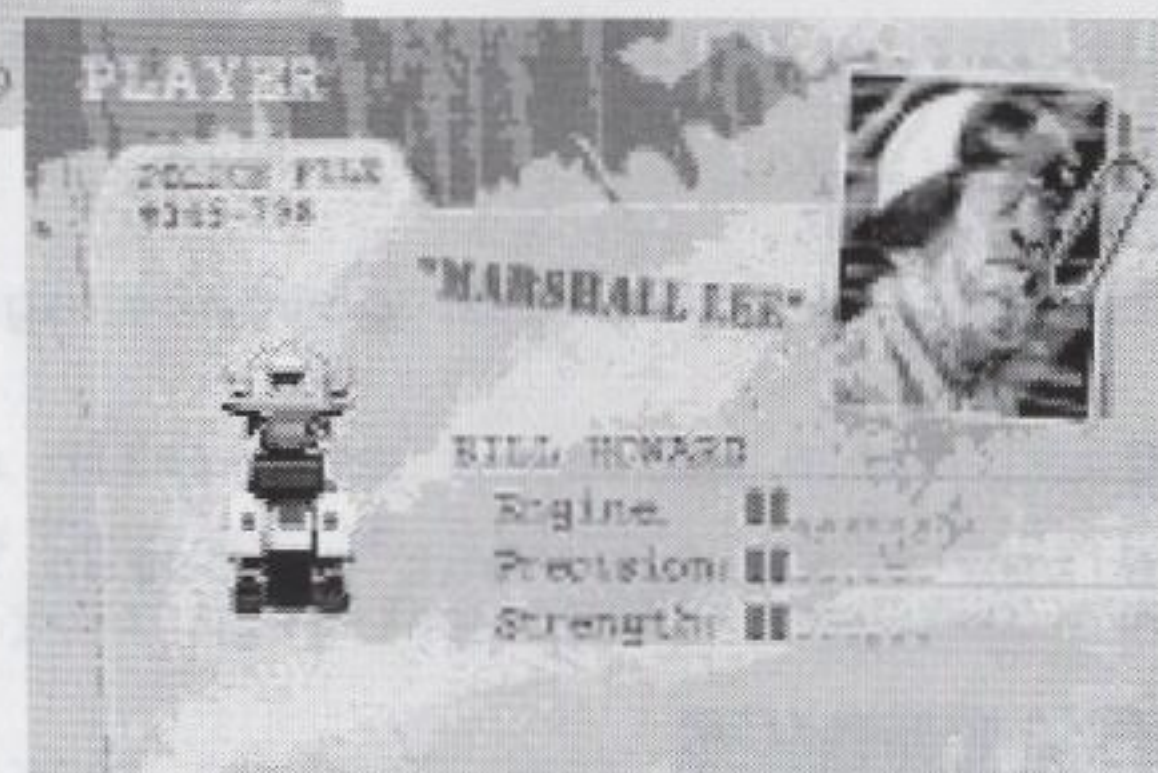
Tiny



Lulu



Lee



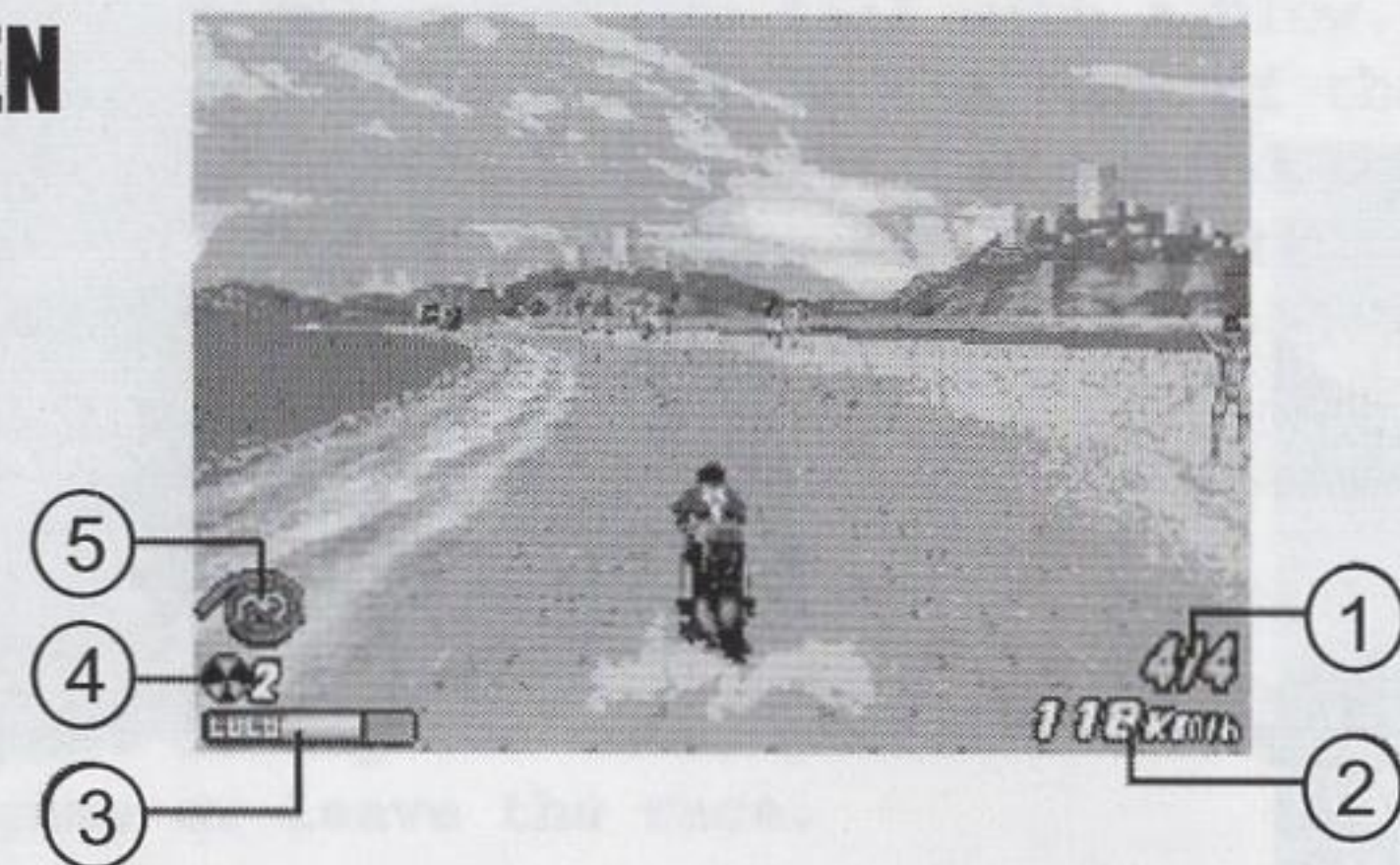
In game COP PATROL, Marshall Lee will be the biker, who enforces the long arm of the law.

RACE CHOICE

In the beginning of the game, you only have access to one race.

Other races will be unlocked with your victories.

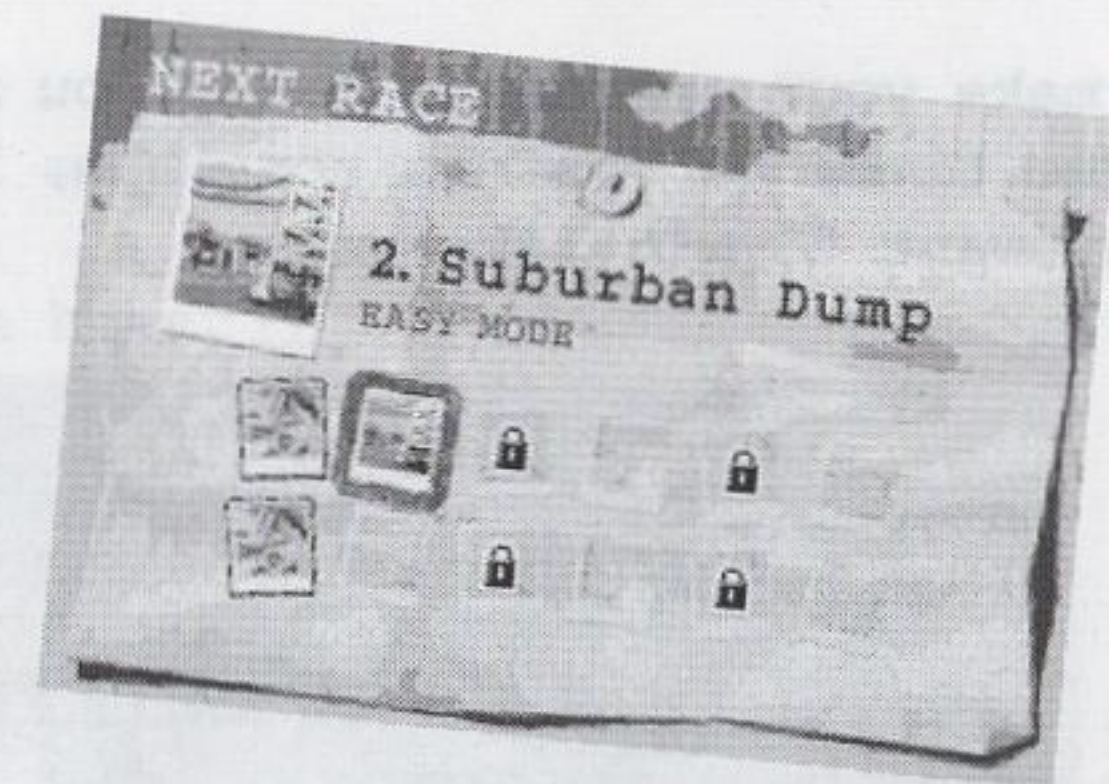
RACE SCREEN



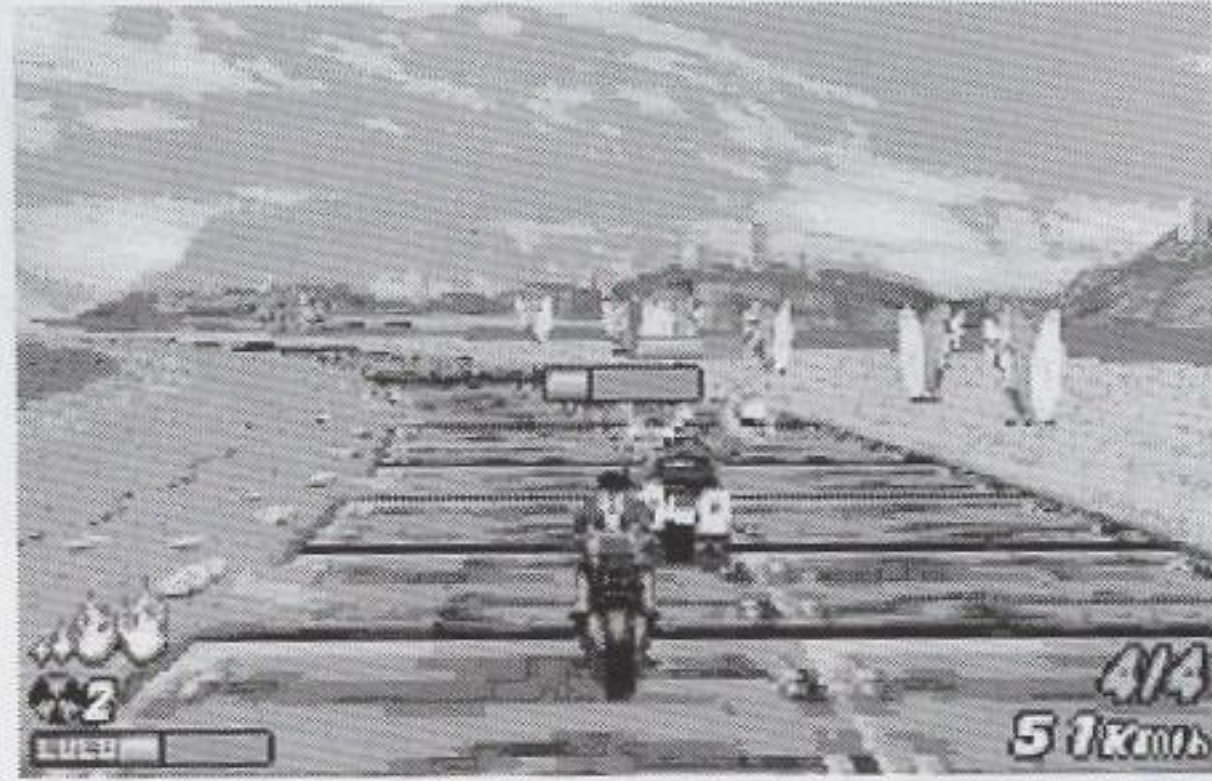
1. Position: Your place in the pack.
2. Speedometer: Your speed in kilometer/hour.
3. Energy bar: When this bar is empty, your engine breaks.
4. Nitro. Stock: Shows the number of boosts possible.
5. Collected item: Shows the collected item.

FIGHTING

To win races, it will often be necessary for you to hit your opponents... You can give many sorts of blows, with or without accessories.



To make your opponents fall, you must hit them three times as fast as possible, but be careful. They want to win like you..

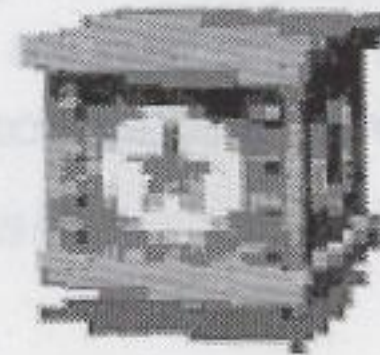


When you hit an opponent, his energy bar decreases. If his bar is empty, he falls and his engine is broken. It's the same for you..

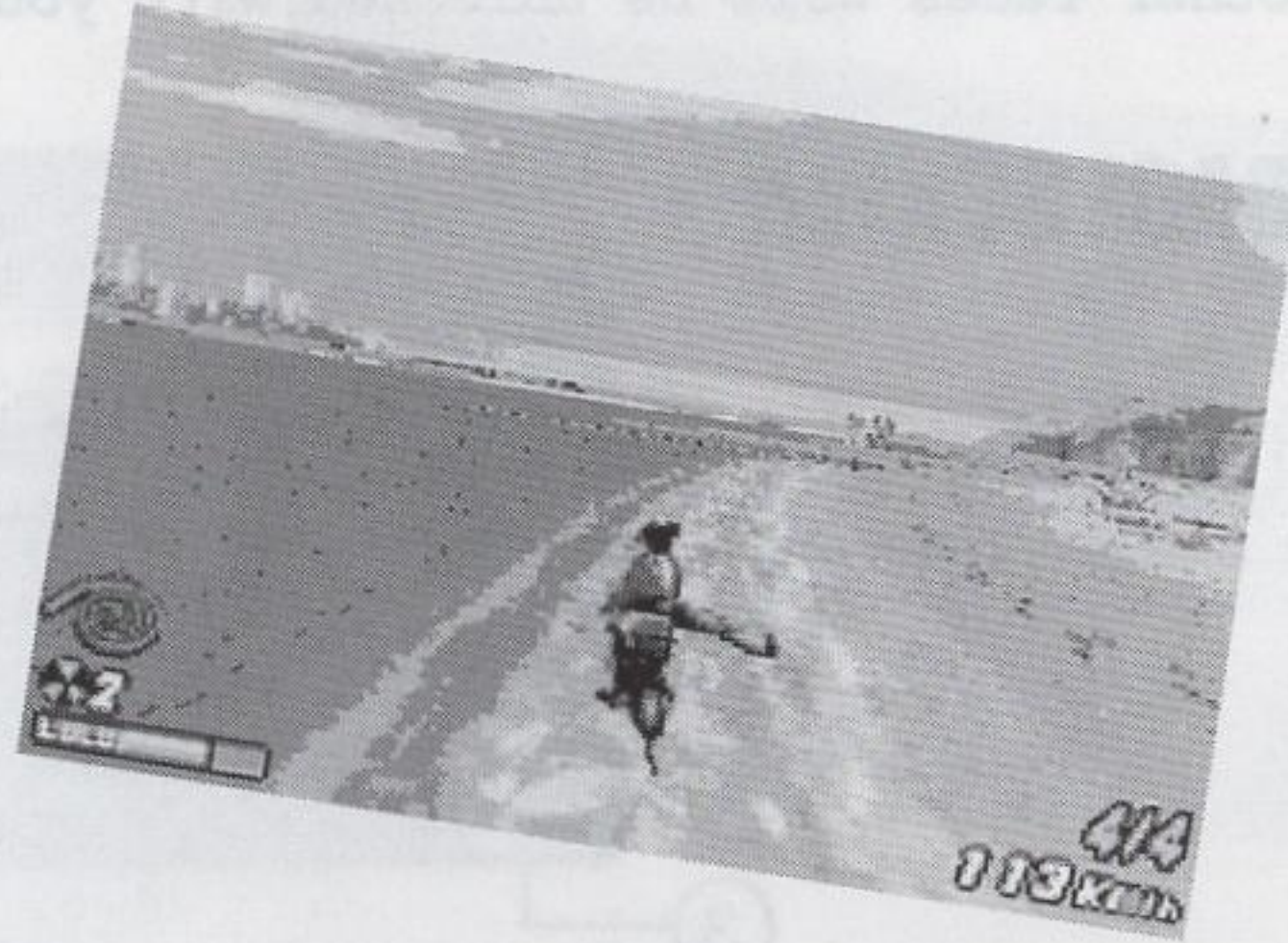
BONUS ITEMS



Dollar symbols add to your upgrade ability.



Bonus items are in the crates.

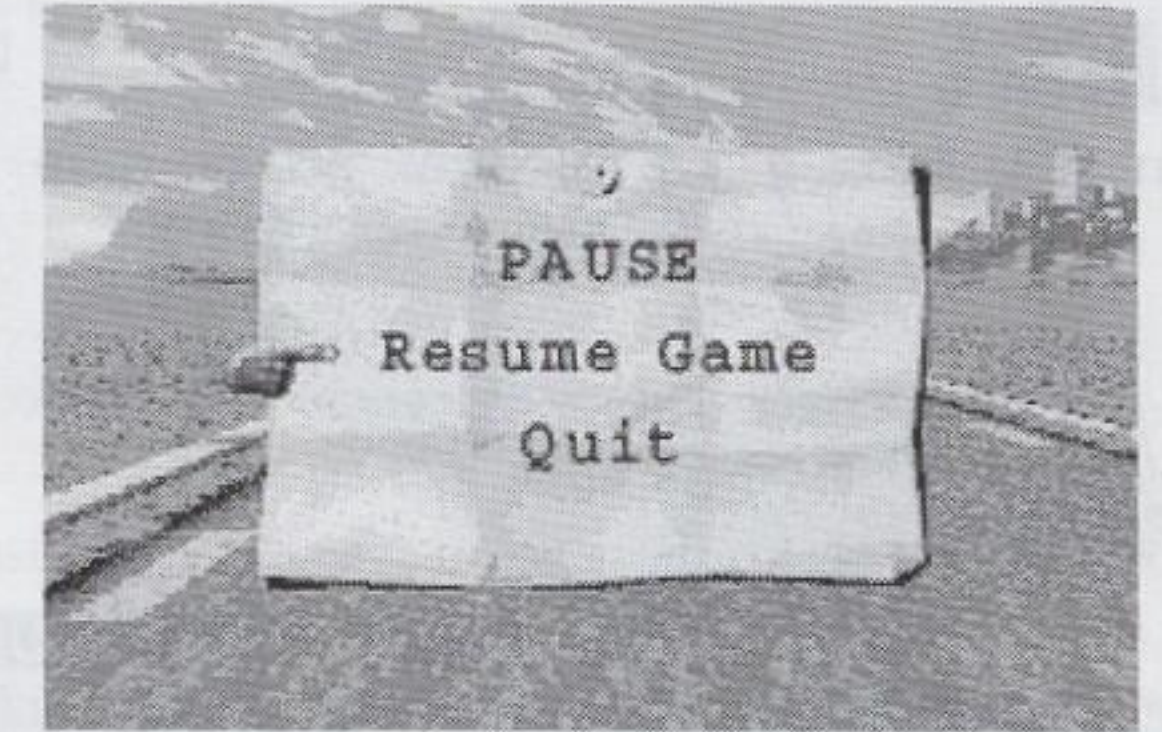


List of Bonus items:

- **Special Weapons:** One different for each biker. It makes it possible to make the opponents fall with a blow.
- **Fire Launcher:** Shoots fire from the back of the bike.
- **Tar:** Leaves a trail of tar behind the bike.
- **Helmet:** You temporarily become invincible.
- **Hamburger:** Recover your energy.

PAUSE MENU

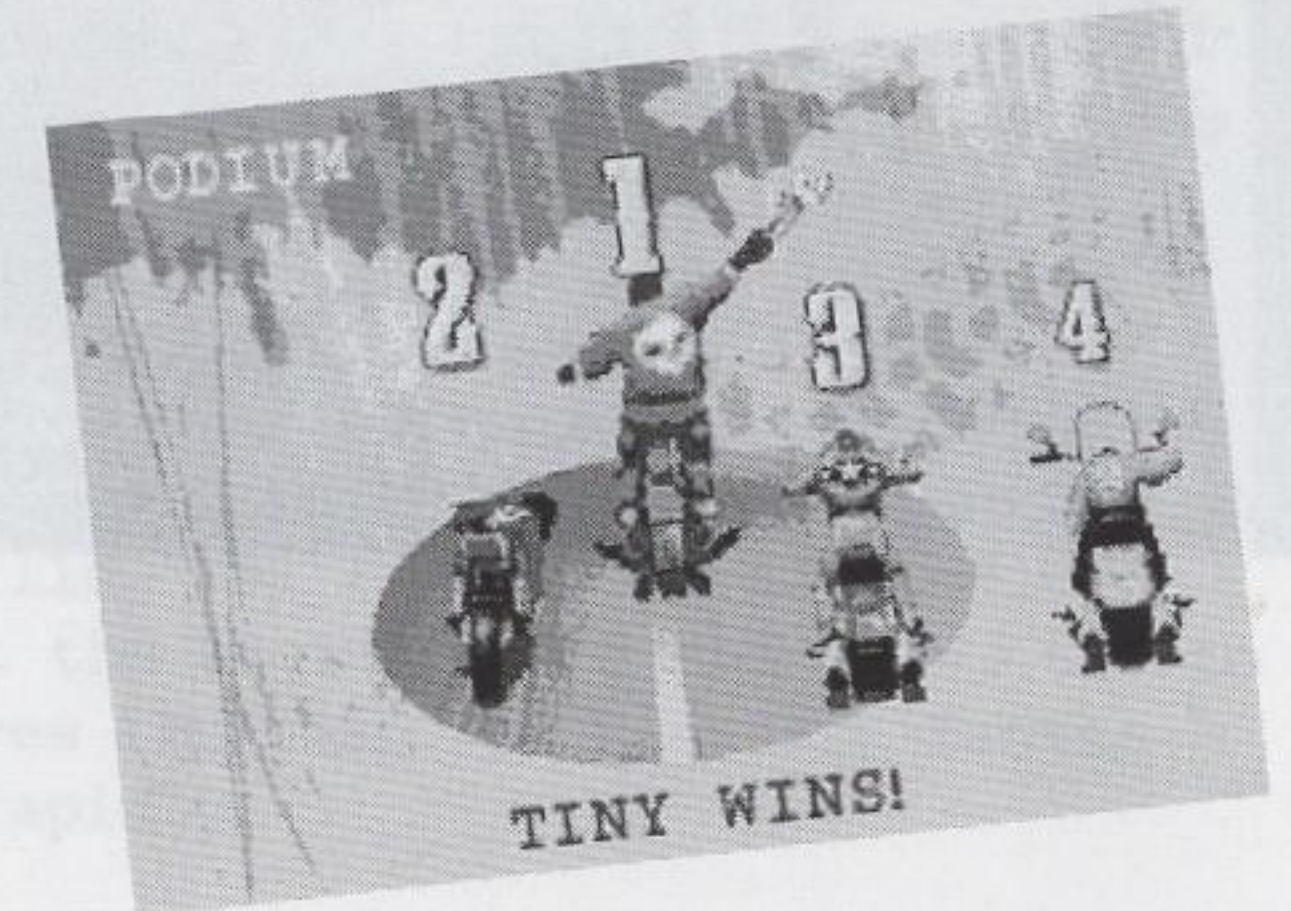
If you press Pause during the race, you can choose to resume the game or leave the race.



END OF RACE

At the end of each race, you will see all player's rankings. There are many different ways to finish a race:

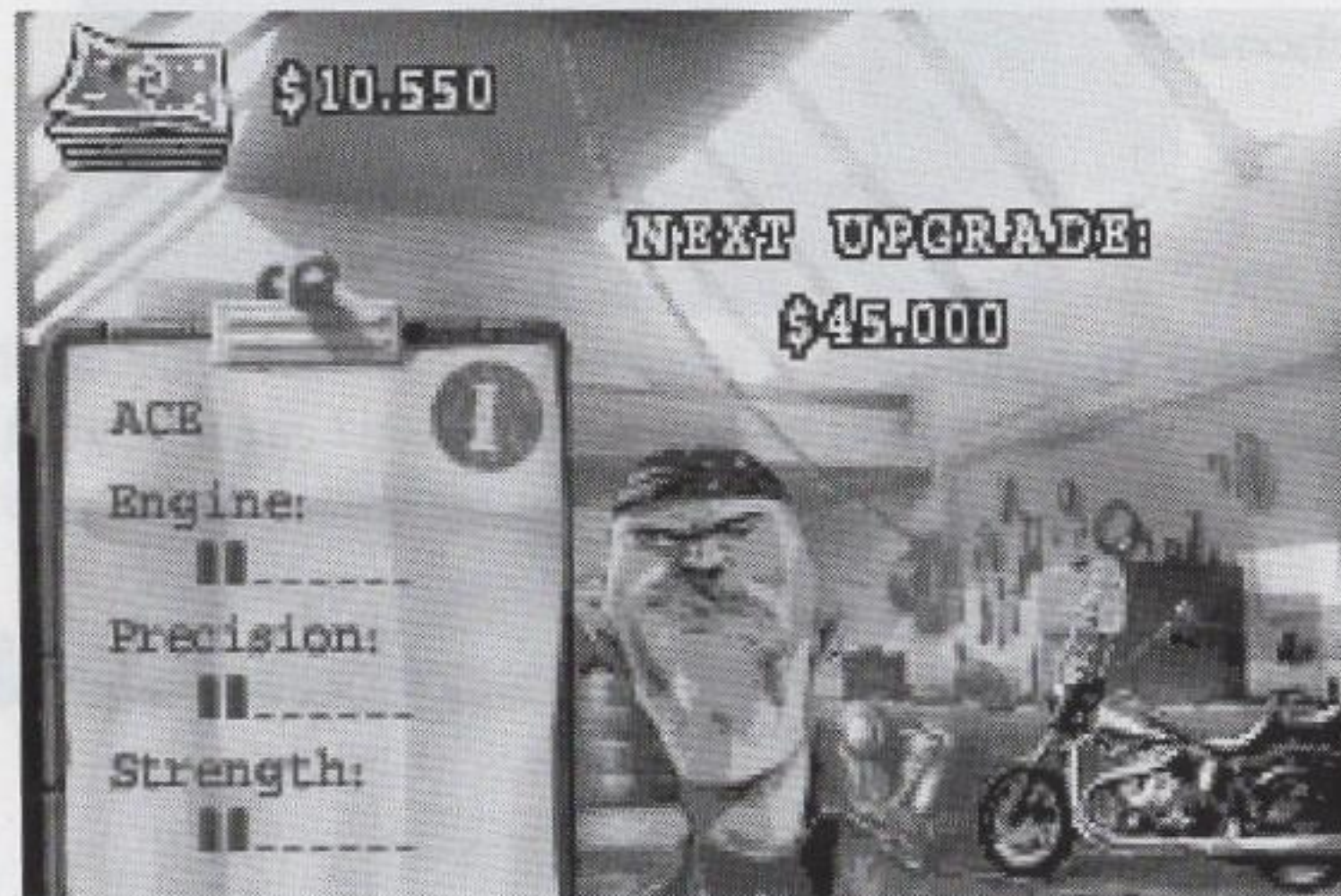
- **Victory:** You win the race and advance to the next race.
- **Lost:** You finish the race but you aren't able to advance.
- **Broken:** You blow your engine before the end of the race.
- **Arrest:** If Marshall Lee makes you fall, you are arrested.



In case of failure, you can start the race again..

GARAGE

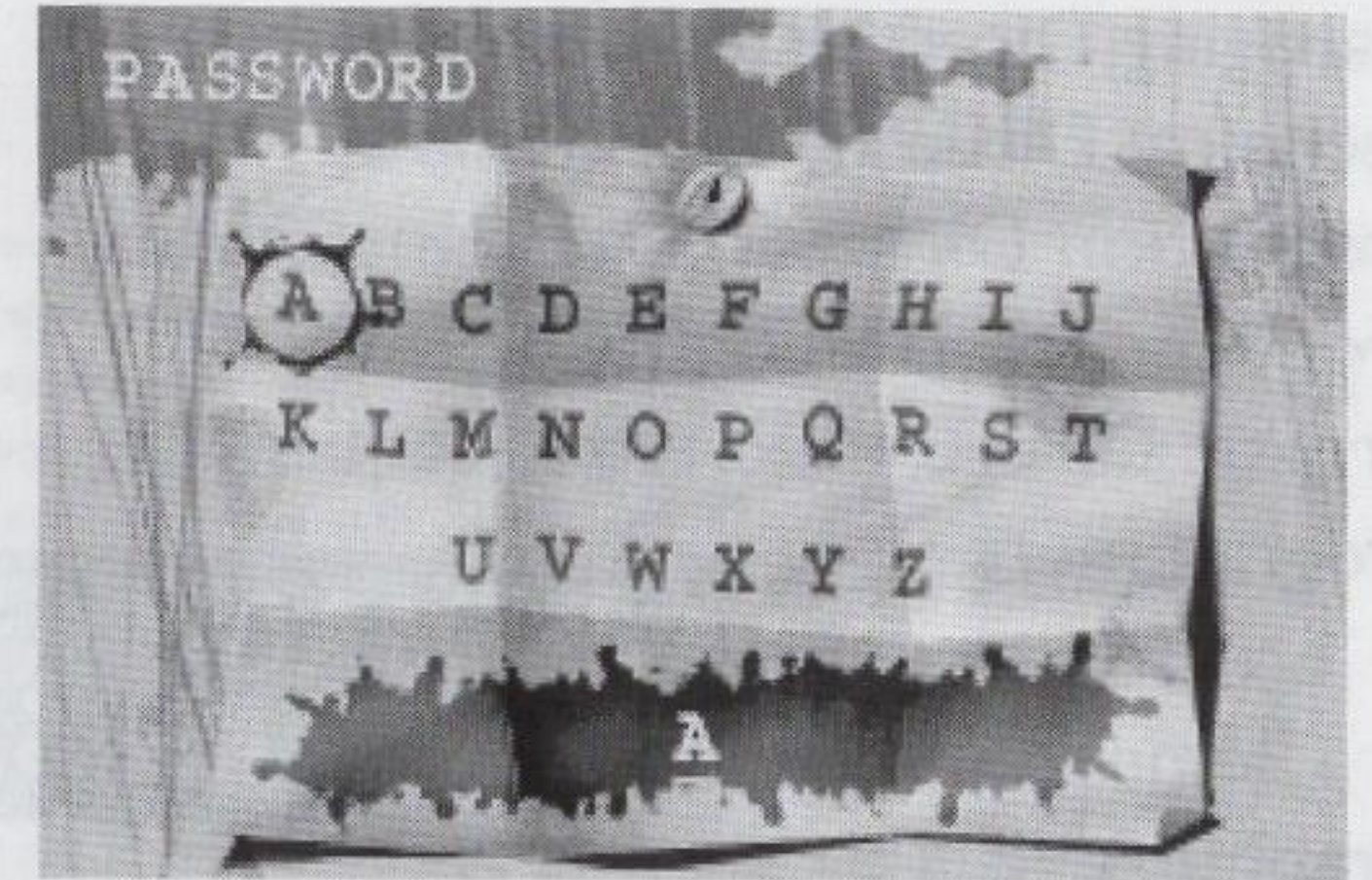
When you win a race, you go to the GARAGE.



It's here that you can upgrade strength, engine power and attack precision of your rider.

PASSWORD

To keep your progress, you have access to passwords. You can get to the Password screen from the Biker Choice screen.



TIPS

- Turning easily:** In quick turns, you can turn faster if you stop accelerating.
- Nitro.:** Nitro lets you run at your maximum speed for a short time.
- Fighting:** To make an opponent fall from his bike, beat him three times as fast as possible.
- Foot kick:** To strike an opponent with a kick, press the top button opposite to the side your opponent is to you. For example, if your opponent is on your left, press the right button.
- Dollars:** Collect the dollars on the track and buy upgrades for your favorite biker. Strength, engine power and attack precision can be upgraded in the Garage.
- Avoid Jumps:** The bike loses speed when you jump. To stick to the track, stop accelerating on top of the hills. You'll keep more velocity.
- Hyper-fast start:** To make a hyper-fast start at the beginning of the race, try to start as soon as the girl waves the flag. To re-start faster after a fall, press Up+Up+A rapidly.

A game developed by MAGIC POCKETS

Managing Director : Pierre Adane

Technical Director : Eric Zmiro

Production Director : Stéphane Dupas

Producer : Pierre Dumas

Artistic Director : Etienne Jacquemain

Programmers :

Eric Zmiro

Clément Cordé

Graphic Artists :

Etienne Jacquemain

Olivier Baron

Jérôme Lignier

Sébastien Lucas

Ivan Terlecki

Level Design : Alexandre Migeon

Music and SFX : Shin'en

Thanks to : Sophie Dillenseger



Distributed by DESTINATION SOFTWARE INC

Studio Producer:

Donald Tao

Studio:

Juan "Solo" Gutierrez

Amy Gibbons

Jarrett Kaufman

Thanks to:

Eberjan Purugganan

Beth Garbarini

Jacqueline Fung

DESTINATION
SOFTWARE, INC



DSI Games/Destination Software Inc.

is an authorized Electronic Arts Distributor

ELECTRONIC ARTS™

ELECTRONIC ARTS INC.

Road Rash™ Jailbreak™ © 2003 Electronic Arts Inc. Road Rash, Jailbreak and Electronic Arts are trademarks or registered trademarks of Electronic Arts Inc. in the U.S. and/or other countries. All rights reserved.

DESTINATION SOFTWARE, INC. 90 DAY WARRANTY

DESTINATION SOFTWARE, INC. (DESTINATION) warrants to the original purchaser only of this DESTINATION software product that the medium on which this software program is recorded is free from defects in materials and workmanship for a period of ninety (90) days from the date of purchase. This DESTINATION software program is sold "as is", without express or implied warranty of any kind, and DESTINATION is not liable for any losses or damages of any kind resulting from use of this program. DESTINATION agrees for a period of ninety (90) days to either repair or replace, at its option, free of charge, any DESTINATION software product, postage paid, with proof of date of purchase, at its Factory Service Center. Replacement of the game pak, free of charge to the original purchaser (except for the cost of returning the game pak) is the extent of our liability.

This warranty is not applicable to normal wear and tear. This warranty shall not be applicable and shall be void if the defect in the DESTINATION software product has arisen through abuse, unreasonable use, mistreatment or neglect. THIS WARRANTY IS IN LIEU OF ALL OTHER WARRANTIES AND NO OTHER REPRESENTATIONS OR CLAIMS OF ANY NATURE SHALL BE BINDING ON OR OBLIGATE DESTINATION. ANY IMPLIED WARRANTIES APPLICABLE TO THIS SOFTWARE PRODUCT, INCLUDING WARRANTIES OF MERCHANTABILITY AND FITNESS FOR A PARTICULAR PURPOSE, ARE LIMITED TO THE NINETY (90) DAY PERIOD DESCRIBED ABOVE. IN NO EVENT WILL DESTINATION BE LIABLE FOR ANY SPECIAL, INCIDENTAL OR CONSEQUENTIAL DAMAGES RESULTING FROM POSSESSION, USE OR MALFUNCTION OF THIS DESTINATION SOFTWARE PRODUCT.

Some states do not allow limitations as to how long an implied warranty lasts and/or exclusions or limitations of incidental or consequential damages so the above limitations and/or exclusions of liability may not apply to you. This warranty gives you specific rights, and you may also have other rights which vary from state to state.

This warranty shall not be applicable to the extent that any provision of this warranty is prohibited by any federal, state or municipal law which cannot be pre-empted.

Repairs/Service after expiration of Warranty - If your game pak requires repair after expiration of the 90-day warranty period, you may contact the Consumer Service Department at the number listed below. You will be advised of the estimated cost of repair and the shipping instructions.

www.DSIGames.com

DESTINATION SOFTWARE, INC. Consumer Service Dept. (888) 654-4447

400 North Church St., Moorestown, NJ 08057

DSI Games/Destination Software, Inc. is an authorized Electronic Arts distributor.

Distributed by Destination Software, Inc.
400 North Church Street, Moorestown, NJ 08057
1-888-654-4447
www.DSIGames.com

PRINTED IN USA