

OUTLAW VOLLEYBALL

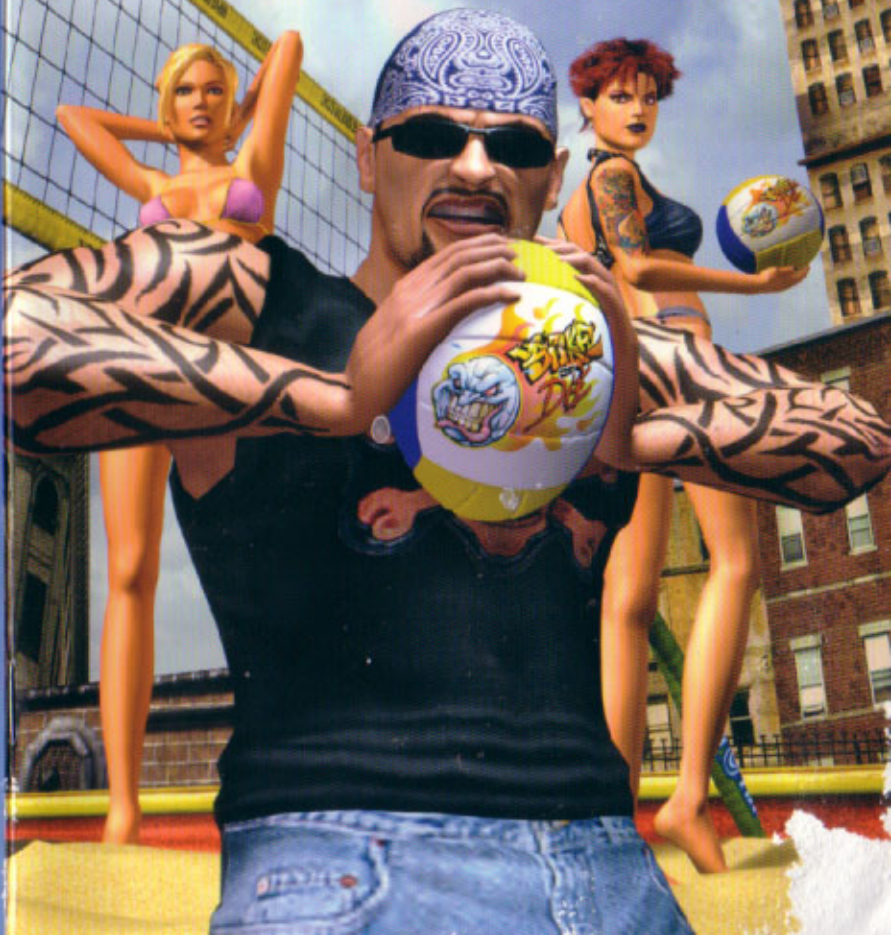
NOTHING IS OUT OF BOUNDS

TIPS & TRICKS

- 1 **SUPER ACTION**
Hold the R Trigger FIRST, THEN hit A or X to get a super-serve or a super-spike.
- 2 **SWITCH PARTNERS**
Switch character control on the court to have total control over your team. Hit the L Trigger.
- 3 **TEAM STRATEGY**
The closer you are to the net when you hit, the harder it is for your opponents to block or return. Remember this when setting to your teammates.
- 4 **QUICK RETURNS CAN HELP YOU SCORE**
Keep your opponents on their toes by mixing it up. For a quick return, press the X Button on your first or second hit so they don't expect a spike every third hit.
- 5 **TURBO**
Get to the ball faster by holding down the R Trigger.
- 6 **ADVANCE PLAY**
The game is more exciting when the aimers are turned off. It keeps your opponents guessing where the ball is going to go next. Toggle aimers on and off in the Options Menu.

XBOX
LIVE ONLINE ENABLED

OUTLAW VOLLEYBALL



0-7435-2569-8/0-7435-3058-6/53305810



HYPNOTIX



A THQ COMPANY

Safety Information

About Photosensitive Seizures

A very small percentage of people may experience a seizure when exposed to certain visual images, including flashing lights or patterns that may appear in video games. Even people who have no history of seizures or epilepsy may have an undiagnosed condition that can cause these "photosensitive epileptic seizures" while watching video games.

These seizures may have a variety of symptoms, including lightheadedness, altered vision, eye or face twitching, jerking or shaking of arms or legs, disorientation, confusion, or momentary loss of awareness. Seizures may also cause loss of consciousness or convulsions that can lead to injury from falling down or striking nearby objects.

Immediately stop playing and consult a doctor if you experience any of these symptoms. Parents should watch for or ask their children about the above symptoms—children and teenagers are more likely than adults to experience these seizures.

The risk of photosensitive epileptic seizures may be reduced by sitting farther from the television screen, using a smaller television screen, playing in a well-lit room, and not playing when you are drowsy or fatigued.

If you or any of your relatives have a history of seizures or epilepsy, consult a doctor before playing.

Other important health and safety information The Xbox Instruction Manual contains important health and safety information that you should read and understand before using this software.

Avoid Damage to Your Television

Do not use with certain televisions. Some televisions, especially front- or rear-projection types, can be damaged if any video games, including Xbox games, are played on them. Static images presented during the normal course of game play may "burn in" to the screen, causing a permanent shadow of the static image to appear at all times, even when video games are not being played. Similar damage may occur from static images created when placing a video game on hold or pause. Consult your television owner's manual to determine if video games can be played safely on your set. If you are unable to find this information in the owner's manual, contact your television dealer or the manufacturer to determine if video games can be played safely on your set.

Unauthorized copying, reverse engineering, transmission, public performance, rental, pay for play, or circumvention of copy protection is strictly prohibited.

TABLE OF CONTENTS

Using the Xbox Video Game System	2
Using the Xbox Controller	3
Connect to Xbox <i>Live</i>	4
Game Controls	6
Loading & Saving Games	9
General Volleyball Rules	10
Game Modes	11
Game Interface	12
Playing the Game	13
Fighting	15
The Characters	16
The Courts	20
Exhibition Mode	22
Tour Mode	24
Drills	25
Play Live	27
Rip Your Own Music	28
Options	29
Credits	31

USING THE XBOX VIDEO GAME SYSTEM

1. Set up your Xbox™ video game system by following the instructions in the Xbox Instruction Manual.
2. Press the power button and the status indicator light will light up.
3. Press the eject button and the disc tray will open.
4. Place the *Outlaw Volleyball* disc on the disc tray with the label facing up and close the disc tray.
5. Follow on-screen instructions and refer to this manual for more information about playing *Outlaw Volleyball*.

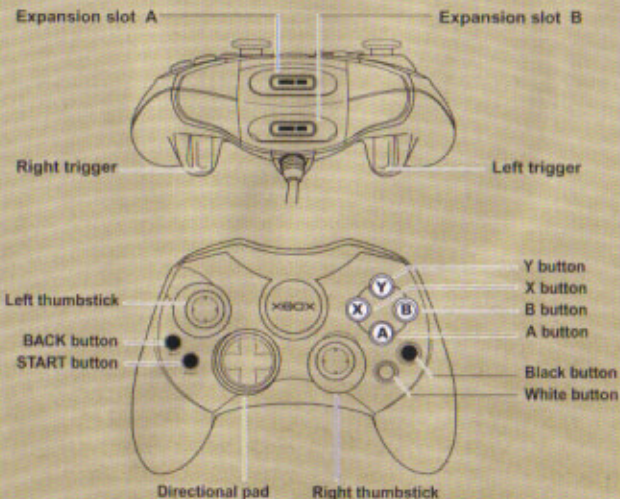


AVOIDING DAMAGE TO DISCS OR THE DISC DRIVE

To avoid damage to discs or the disc drive

- Insert only Xbox-compatible discs into the disc drive.
- Never use oddly shaped discs, such as star-shaped or heart-shaped discs.
- Do not leave a disc in the Xbox console for extended periods when not in use.
- Do not move the Xbox console while the power is on and a disc is inserted.
- Do not apply labels, stickers, or other foreign objects to discs.

USING THE XBOX CONTROLLER



1. Connect the Xbox Controller to any controller port on the front of the Xbox console. For multiple players, connect additional controllers to available controller ports.
2. Insert any expansion devices (for example, Xbox Memory Units) into controller expansion slots as appropriate.
3. Follow on-screen instructions and refer to this manual for more information about using the Xbox Controller to play *Outlaw Volleyball*.

CONNECT TO XBOX LIVE!

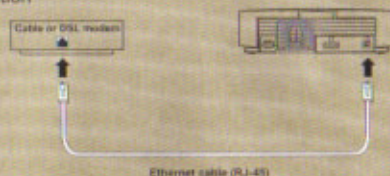
Important! Before using this product, read the Xbox Instruction Manual for important safety information and health warnings.

Step 1: Connect

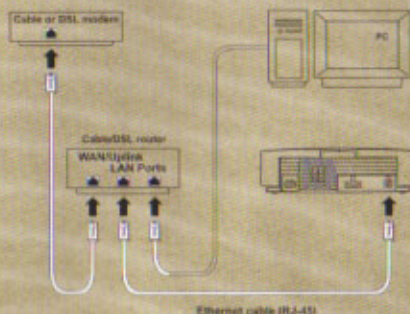
To connect your Xbox console directly to broadband, see diagram A. Or, to share your broadband connection with a PC, see diagram B.

For more details and other home networking options, including Internet connection sharing, see www.xbox.com/live.

A. Direct Connection



B. Shared Connection



Step 2: Go Live

Important! Xbox Live is a subscription service. You will need a subscription code to set up an Xbox Live account and play online. To find out how to get a subscription code, visit your local retailer or see www.xbox.com/live.

You'll need to set up an Xbox Live account to play games online. Here's how:

1. Insert an Xbox Live Starter Kit disc or game disc into the disc tray. Check game packaging to see if the game supports Xbox Live play.
2. From within the game, select the option for Xbox Live.

At this point, the Xbox console will try to go online. If it works, create your Xbox Live account by following the instructions on screen and entering your subscription code when prompted.

If the Xbox console can't go online automatically, you'll get an error message. Go on to Step 3.

Step 3: Configure (if necessary)

If you can't go online automatically, use Network Setup in the Xbox Dashboard to enter some network settings. You may need to enter information such as a host name, a MAC address, or an ISP user name and password. Contact your broadband service provider if you don't have this information. Once you have the information, enter it in the Xbox Dashboard.

Need more help?

Should you have any problems connecting to the Xbox Live service, do not attempt to take apart, service, or modify the Xbox console or peripherals in any way. Doing so could present the risk of serious injury or death from electric shock or fire and will also void our warranty. For additional assistance see www.xbox.com/live or call the Customer Support number:

- United States and Canada: 1-800-4MY-XBOX (1-800-469-9269)
- TTY users (requires special equipment for hard of hearing):
United States and Canada: 1-866-740-9269 or 1-425-635-7102.

GAME CONTROLS

These screens will appear during Loading along with other tips and tricks.



OFFENSE

A Button

Bump/Set/Spike

B Button

Bumps or Dinks the ball over the net—Weak Return.

X Button

Aggressive Return

White Button

Starts a Fight. Must initiate before a serve.

R Trigger

Turbo

R Trigger + A

Super Serve/Super Spike

L Thumbstick or D-Pad Start

Move your character around.
Enter Pause Mode.

DEFENSE

Y Button

Block

White Button

Starts a Fight. Must initiate before a serve.

R Trigger

Turbo

L Trigger

Switch which character you control.

L Thumbstick or D-Pad Start

Move your character around.
Enter Pause Mode.

FIGHTING

B Button

Punch

A Button

Kick

X Button

Block

R Trigger + Y

Special Move

L Thumbstick or D-Pad

Move your character around.

Black Button

Help

REPLAYS

- A Button** Cycle through targets for camera (ball, player 1, player 2, etc.)
- X Button** Rewind to beginning of the replay.
- Y Button** Fast forward to end of the replay.
- R Thumbstick** Zoom in and out on the target.
- L Thumbstick** Rotate and raise or lower camera around the target.
- R Trigger** Shuttle forward (depress trigger fully for fast, let out for slower speeds).
- L Trigger** Shuttle backward (depress trigger fully for fast, let out for slower speeds).
- D-Pad** Watch Replay in real-time—Right plays forward, Left plays reverse.
- Start** Enter Pause Mode.
- Black Button** Help

MENUS

- A/START Buttons** Select/Accept
- B/BACK Buttons** Cancel/Back
- X Button** Bio and Zoom In modes during Character Select.
- Black Button** Help

LOADING AND SAVING GAMES

To begin, players must create a profile or load a saved profile.

CREATING GAMES

- To create a new profile, use the on-screen keyboard to name the profile.
- Pull the Left Trigger to shift the on-screen keyboard for uppercase letters/symbols.
- Use the D-Pad or Left Thumbstick to move the cursor.
- Press the A Button to enter a chosen letter and select Done to finish.

LOADING GAMES

- To load a game, select Load from the Menu and select a location from which to load a saved game. This location is now the default location and all auto-saves will go here. Note that loading a game while another is loaded will erase all current progress unless that profile has been saved.

SAVING GAMES

- Choose where to save your game. You can select from the Xbox hard disk and any available memory unit. Select the device on which you wish to save your profile, then press A and confirm your action if necessary.

Note: *Outlaw Volleyball* saves automatically at various points, but you can save your current Tour whenever you choose by returning to the Sign-In Menu. If you choose to save manually, pick a Memory Unit or the hard disk and save your game. This location is now the default location and all auto-saves for this profile will go here.

COPYING GAME FILES

Load a game and use the Sign-In screen to save the game to a new location. You can also use the Memory Setting in the Xbox Dashboard™ to copy a saved game from the Xbox hard disk to a memory card or vice-versa.

GENERAL VOLLEYBALL RULES

The main goal in volleyball is to avoid having the ball hit the ground on your side of the net. You want to hit the ball over the net in such a way that it will land on the ground of the opposing team. At the same time you want to prevent it from landing on your own side. Once the ball is in play, it's called a "volley." A volley continues until the ball touches the ground or lands out of bounds.

- Each team gets up to three hits to get the ball over the net.
- The same player cannot hit the ball twice in a row, except in certain situations—after a block or if it hits the player and bounces off the net. The next contact must be immediate.
- After a serve, the opponent may not block or spike on the first hit.
- The ball is out of bounds if it crosses the net outside of the red and white antenna extending upward at either side of the net.

ADVANCED CONTROLS

Remember that if you press the button to hit the ball **SLIGHTLY BEFORE** the ball gets to your player, you will hit the ball with more control. Ideally, you want to be **UNDER THE BALL** so you have maximum control of any bump, set, or spike. This is even more important as your players improve and advance in their class.

Tip: Always try to keep your players positioned across the court to keep as much of the playing area covered as possible.

TWO SCORING MODES

- **Rally** Every time the ball hits the ground someone scores, no matter who has the serve. The team that scores the point gets control of the next serve.
- **Side Out** A team can only score a point if they served the ball.

SWITCHING SERVES

A player will continue to serve the ball until the other team scores a point or wins the volley. Teammates take turns serving only after control of the serve switches to the opposing team then back to their team.

GAME MODES

NO SHOES. NO SHIRTS. NO MERCY.

EXHIBITION

Designed for casual play and multiplayer games. All unlocked characters and courts are accessible—unlock others by completing Tour events. See p. 22 for Exhibition modes of play.

RANDOM PLAY

Want to jump in and just start playing? In Random Play the game automatically picks 4 characters. Choose your own court and game options and get going right away.

TOUR

Consists of 50 events divided among 10 courts. Only 3 courts and 4 characters are unlocked initially. Completion of these Tour events lets the player unlock more courts, events, characters, outfits, and drills. See p. 24.

DRILLS

Drills gives you practice in the finer points of play and are necessary to build up character skills. This lets you get better partners and thus win Tour events, as well as unlock stuff. See p. 25 for Drills.

XBOX LIVE

Head to head competition supported on Xbox *Live*. Play with up to 4 people on 2 Xboxes. See p. 27.

TUTORIALS

Features a movie style tutorial system to learn more about:

- Blocking
- Fighting
- Serves
- Turbo
- Volleys
- Basic Rules

GAME INTERFACE

TEAM INTERFACE

Indicates team characters, who is controlling them, and their Momentum level.

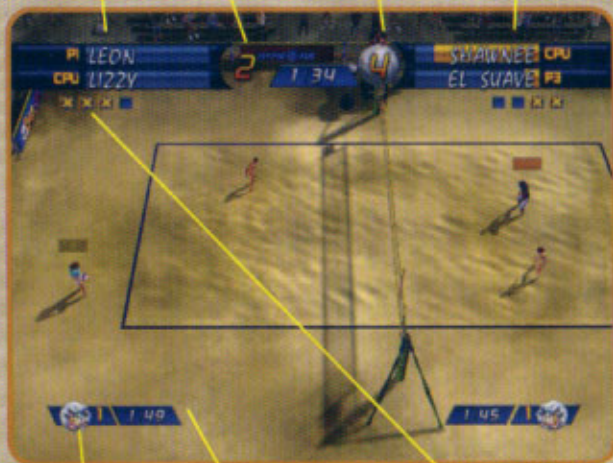
MOMENTUM METER

Yellow bar behind teammate name

SERVE INDICATOR

Shows which team currently has the serve

SCORE



FIGHT TOKENS

Indicates how many times a team may start a fight. See p. XX for Fighting.

MATCH INDICATOR

Displays how many games necessary to win the match and how many already won.

TEAM TIMER

PLAYING THE GAME

POWER METERS

Meters appear to indicate the power of a serve or the quality of a spike.



SERVE METER



SPIKE METER

When serving or spiking the ball, a Serve Meter or a Spike Meter will appear to indicate how good the hit will be. Press and hold the A Button to quickly fill the meter. Once it reaches the top, the meter begins to empty just as quickly. As always, timing is everything. Try to release the button when the Meter is filled to get the best quality spike or most powerful serve possible by that character.

Note: The power of your serve and quality of your spike are directly linked to the character's attributes. See p. 26.

TEAM AIMER

This target appears on the other side of the court when the player is preparing to spike or serve the ball. Move this target around the court to aim where the ball will go when hit.

Note: Toggle this target On/Off in the Options Menu.



DESTINATION TARGET

This target appears once a ball has been hit to indicate where the ball will land.



TURBO METER

Pull and hold the R Trigger half-way to see the Turbo Meter above each character's head. This Meter indicates how much power each character has for super spikes, super serves and quicker running. Turbo regenerates itself over time.

MOMENTUM

The amount of Momentum determines how quickly a character's Turbo Meter regenerates. Score points and win fights to gain Momentum. Miss shots and lose fights and you will lose Momentum. Momentum is indicated by the yellow bar behind the teammate's name.

FIGHTING

DON'T JUST BEAT YOUR Oponents, BEAT THEM SENSELESS

If you're not winning by playing better than the opposing team, take a page from Killer Miller's mom's book, "If you can't beat 'em, kill 'em."

Teams earn Fight Tokens after winning a long volley or making an Ace. With tokens, you can challenge one of the opposing teammates to a fight. Characters can punch, kick, block and use special moves to knock out the other player. However, use the special move shrewdly as there is a 15 second delay before you can use it again.

Note: Character attributes affect fighting—characters with more Power will hit harder, and those with more Speed will move faster. See p. 26 for more information on character attributes.

The winner of the fight gets to "steal" Momentum from the loser, enough to completely fill up the victor's Momentum meter.

MOMENTUM

Displays the amount that is at risk for the fight.

HEALTH BAR

When health is gone, the fight is over.



TIME LIMIT

THE CHARACTERS

TRAILER TRASH MEETS BIKINI BEACH

Leon is a badass former all-pro who's had his bad-ass kicked out of every other professional sports league. He's a born competitor who hates to lose.

Lizzy is the trashiest of the Euro-trash and damn proud of it. The only thing she loves more than volleyball is doing it in the backseat of her Morris.

The only thing **El Suave** loves more than beautiful women is his beautiful self. When he steps onto the volleyball court, even the sand swoons.

Shawnee is arguably the best Native American volleyball player in the country today, right behind Dances With Volleyball and Sitting Spike.

Mac Daddy extraordinaire, **Ice Trey** can bust a rhyme and a spike at the same time. His game is off da hezzy fo sheezy...or something like that.

Doe Joe is an expert volleyball player and a black belt in karaoke. When he's not busy crooning like his idol, Elvis, he's doing something else.

More than just another pretty face, **Summer's** got a nice ass, a great rack and killer thighs. And she's not too bad at volleyball either.

Country Clem loves to bump, set and spike, but hates to shower. When this down-home boy's not playing offensively, he's just plain offensive.

Donna Maroni's the pride of Queens, NY, which just goes to show how little pride Queens has left. She's a serious trash talker, who's also got game.

Chica Chavez boasts that she's 100% Puerto Rican and 200% attitude. Okay, so she may suck at math, but she's awesome on the volleyball court.

For **Natasha** the cold war may be over, but on the volleyball court, communism still rules. She may seem a bit cold, but that's only because she is.

Harley is a motorcycle mama who likes to kick her opponents asses, as well as her friends, family and, frankly, anyone who even looks at her funny.

Harvest believes in a philosophy of "live and let live," but she also believes in beating the crap out of her opponents. She spikes hard and saves whales.

The scariest dude to ever step onto a volleyball court, **Killer Miller** violates parole every time he assaults the ball. He's proof the system sucks.

Nikki Steele is living proof that rock and roll never dies and big hair's coming back. He's happiest when he's jammin', , slammin', and glammin'.

When he's not totally 'faced, **Scrummy** is a holy terror on the volleyball court. He's fast as lightning and stronger than a shuggly wench in heat.

SELECT CHARACTERS

THE BALL ISN'T THE ONLY THING THAT BOUNCES

- Use the Thumbstick or D-Pad to cycle through the character wheels and the A Button to select characters.
- Use the R/L Triggers to change costumes.
- Use the D Pad to select a color.
- Hit X to get more information on a character.
- Use the L and R Thumbsticks to zoom and rotate character.

Characters have ratings in 4 performance attributes—**Speed, Power, Offense and Defense.**

Once you build up your character's different attributes, they can be used in all modes of gameplay and on Xbox™ Live. For info on how to build up attributes, see Drills, p. 25.



FIRST TEAM



The 16 characters in the game are divided into 4 separate classes: **Dookies, Chumps, Bangers and All-Stars.** At the start of a TOUR the player can pick any 2 of 4 available characters (all in the Dookie class) to form an initial team. As the player progresses through the Tour, formerly locked characters become available. Leon and Lizzy, who are both Dookie class players are shown above.

Lower-ranked characters cannot choose a partner from a higher class and must work their way up to improve their team. Higher-ranked characters can partner with anyone their class or lower. Use the Drills (p. 25) to increase a character's skills and class. Once a character has reached a higher class, others from that class will now partner with them.

For example, if the player raises Lizzy to the Chump class, other Chump characters like Ice Trey become available as partners.

DUMPING PARTNERS

In order to free up a spot for Ice Trey, Lizzy has to dump her partner Leon. Sorry Leon, but a girl's gotta do what a girl's gotta do. Dump a partner by hitting the Y Button. Reverse the Dumping by hitting Y again.

THE COURTS

NOT JUST ANOTHER DAY AT THE BEACH



Tar Beach, The Bronx, NY

Beach volleyball in the Boogie Down. Bikini babes, baking sun and noxious tar fumes create the perfect atmosphere for an urban assault.

The Big House, Joliet, IL

It's lockdown in an all women's prison—talk about a captive audience! The beach moves behind bars as the Outlaws battle each other in "familiar territory."

Colon Avenue, Staten Island, NY

Barbecue grills, backyard pools, and a handful of ex-cons in thongs. There goes the neighborhood!

Stinky Falls, Newark, NJ

Strange sounds emanate from below the sticky streets of Newark. Is the sewer home to hordes of mutated life forms? Nah...it's just a "friendly" game of volleyball echoing through the pipes.

Coney Island, Brooklyn, NY

Grab a hot dog, take a walk on the boardwalk—and get a tattoo. The action moves to the beaches of Coney amongst the freak shows and vagrants. Keep an eye on the ball (and your wallet).

Third Rail Junction, Queens, NY

Giving new meaning to the words "railroad spike," Third Rail Junction is dark, dangerous and an ideal place for an Outlaw and his or her volleyball. Just try not to chase a ball out of bounds...that's the 5:15 from Flushing rolling over the backcourt!

The Ice Box, Antarctica

Men and women in bathing suits playing volleyball on the frozen tundra...does it get any better? This is what happens when you're kicked out of the Polar Bear Club for being "truly insane."

The Bone Yard, Salem, MA

Rest in peace and grab a plot—you're at the first-ever volleyball tournament on sacred ground.

Jungle Fever, Somewhere in Peru

Don't worry folks, no trees were killed or animals harmed when clearing these few hundred acres of land. The locals did a "rainforest transplant." (Yeah, and if you believe that we've got a bridge you might be interested in!)

Casa De Guapo, Fundijo Canyon, Mexico

Lick the salt, drink the tequila, bite the lime... and chase it all down with a shot of volleyball. Montezuma's not the only one seeking revenge!

EXHIBITION WITH 3 MODES OF PLAY

NOTHING IS OUT OF BOUNDS

- Choose from the available courts by pressing A. Unlock courts in Tour Mode.
- Use the D-Pad or Left Thumbstick to alter the various settings.
- 3 modes of play—Classic, Hot Potato and Casino

CLASSIC

Goal Reach the selected point total to win.
Win Conditions Score more points than the other team.
Description Standard rules most people associate with volleyball.

HOT POTATO

Goal Keep the ball on the other team's side.
Win Conditions Score more points than the other team.
Description A timer is counting down on-screen. When it goes off, the ball explodes and a point is awarded. The side where the ball explodes loses the point. If the ball hits the ground or goes out of bounds, the ball explodes immediately and the point is awarded using regular rules. If the ball is in the middle, the point is awarded to the offense.

CASINO

Goal Win more money than your opponents.
Win Conditions The team with the most money wins.
Description Every volley has a pot, worth \$1 at the start of the volley. The longer the volley lasts, the greater the pot becomes. The maximum amount is \$5.

OTHER EXHIBITION GAME SETTINGS

Scoring style Choose whether only the serving team can score (Side Out Rules) or whether a point is awarded at the end of every volley (Rally Rules).

Points to Win Choose whether teams must win by 2 points.

Best of Choose number of games in series: best of 1, 3, 5 or 7.

Difficulty Choose the skill levels for the characters.

Game Timer Choose how long the game will last.

Team Timers Choose a time for each team. When it reaches 0, they lose.

Time Bombs Every point drops a time bomb at the point of impact. When it blows, try to be nowhere near it.



TOUR MODE

SHUT UP AND SPIKE

Play through Tour Mode and get in peak performance condition. Then you'll be ready to take on the best in Multiplayer action and go head-to-head online over Xbox Live.

You start off with four available characters—Leon, Lizzy, El Suave and Shawnee, who are all in the Dookie class. This is the lowest class of player and you really have some work to do. You must advance through the events—winning each to unlock the next. By practicing the Drills you can build up your character's attributes and skill level, so they can take on harder competition and events.

Initially, the available courts are Tar Beach, The Big House and Colon Ave. on Staten Island. Each Court has 5 events although you must win the first event to open others. As you progress through the 50 events, other characters, drills and costumes are unlocked, providing more challenges, possibilities and entertainment.

Anything you unlock in Tour Mode is available for you to play on Xbox Live, in Exhibition Mode and in Random Play. So get going—the competition's getting stiffer every day.

SCORECARD TOUR AND EXHIBITION MODE

The Scorecard displays after every game to indicate the scores and how many games won in the series.

- Press X to see Stats, including number of blocks, kills, aces, saves and errors made per player for each game.
- Press X again to see the stat totals from all the games
- Press A to continue on with the series and play another game.

SUSPEND—TOUR MODE ONLY

In Scorecard, pressing Y allows you to suspend the Tour event and save your progress. When you join the Tour again you will continue from where you left off.

DRILLS

FIGHT FOR EVERY POINT. SCORE WITH EVERY BABE.

Lucky for you, these aren't the same old drills from gym class, unless you used to improve your accuracy by aiming at the spectators.

Drills are necessary to build up the characters skills and class. That's how you get better partners so you can win events and unlock stuff.

You start off with 5 Drills that cover volleyball skills including spiking, serving, bumping and blocking. As you play through Tour Mode, and successfully win events, more challenging drills are unlocked to help you ramp up your skill level.

When a drill is completed successfully, the earned skill points can be applied to a character.

CHARACTER-DRILLS

SHAWNEE
Home: Reno, NV
Age: 21

CLASS
D
DOOKIE

SPEED
POWER
OFFENSE
DEFENSE

Spike-D-Rama
Use Spike
Spike em if You Got em
So Spikeracular

Spectator Invaders
When Fans Attack
The Fan Club
Fantastic Fantasy
Can You Dig It?
Magically Delicious
Bubbles Fiesta

Knockout at least 14 pesky spectators before any of them cross the net.

BACK **PICK EVENT** **ACCEPT**

Each character must be drilled separately, although characters that you unlock in Tour mode start in higher classes. A character that starts at a higher class will receive less points per drill than someone from a lower class, but in the end, every character can be maxed out by completing all the drills.

After successfully completing a drill, you will be able to put points towards any or all of the 4 attributes.

Speed—How fast a character moves

Power—How hard a character hits the ball

Offense—Overall offensive abilities

Defense—Overall defensive abilities

Remember that although each character can be “maxed out” in the four categories, different characters have different maximums. Thus, a fast character who is maxed out will be faster than a slow character who is maxed out. Try to select partners who complement each other.



PLAY XBOX LIVE!

IS YOUR PARTNER NOT PERFORMING?

Outlaw Volleyball supports head to head competition through the Xbox™ Live network. You can connect 2 Xboxes and up to 2 people can play on each. Please register for an Xbox Live account before using this feature. See p. 4.

Once you have your Xbox Live account activated, choose Xbox Live from the Select Mode Screen. At the Sign In screen press START and select your username and password to enter the Xbox Live Menu.

- OptiMatch allows you to specify search options, giving you a list of games that meet your preferences, such as Courts, Scoring style, Difficulty, etc.
- Quick Match is the fastest way to challenge an opponent. Play now—ask questions later.
- Create Match allows you to decide exactly what kind of game you want to play by hosting a game with your preferred settings.
- Online Options allows you to add friends to your friend list and view players recently played with. Mask your voice or hide from other players by selecting Appear Offline in the Menu.
- Ranking lets you browse the online leaderboard to see how you measure up against other players.
- Downloads will download the latest **Outlaw Volleyball** content like new characters and new courts
- Sign Out to log off the Xbox Live network.

SOUNDTRACKS

THIS AIN'T YOUR DADDY'S ELEVATOR MUSIC

You can copy tracks from audio CDs using the Xbox video game system. Then you can arrange these tracks into soundtracks and play them from the Xbox video game system without inserting the original CD audio disc. You can play your soundtracks while playing Xbox games.

To Copy Tracks

1. Play an audio CD.
2. Select Back from the music player.
3. Select Copy to display tracks.
4. Select tracks you want to copy. You can select one track, multiple tracks, or all tracks.
5. Select Copy to begin copying the tracks.
6. Select an existing soundtrack, or create a new soundtrack to store the copied tracks. If you Create a new soundtrack, enter a name using the virtual keyboard.

To Play Soundtracks

1. Turn on the Xbox console with no disc in the disc tray.
2. Select Music, and then select a soundtrack rather than Audio CD.
3. Select Play to begin playing.

OPTIONS

MAIN MENU OPTIONS

Access the Options screen from the Main Menu to find overall game controls and the Credits.

AUDIO SETTINGS Adjust the volume for music and sounds.

GAME OPTIONS Adjust the following options that give you control over your game.

- Vibration Play with the controller vibration On/Off.
- Reactions Turn Player Reactions On/Off.
- Fighting Turn Fighting On/Off.

CREDITS The fine folks who brought you this game.

PLAY LIST This option allows you to choose which songs are heard during gameplay. You can edit the song list that comes with the game, as well as add your own. See p. 28

IN-GAME OPTIONS

Press START during the game to access the In-game Options screen. These options include the following:

AUDIO SETTINGS

- **Music** Adjust the volume or turn On/Off.
- **Sound Effects** Adjust the volume or turn On/Off.
- **Announcer** Adjust the announcer's volume or turn him On/Off.
- **Characters** Adjust the volume of the team during gameplay and reactions.
- **Ambience** Adjust the volume of background sounds or turn On/Off.
- **Shuffle** Choose whether the Soundtrack plays in order or randomly.
- **Track Number** Indicates title of track playing. Lets you change the track.

GAME OPTIONS Lets you adjust the following factors that affect how you play the game.

- **Vibrations** Turn Vibration On/Off.
- **Reactions** Turn Player Reactions On/Off.
- **Fighting** Turn Fighting On/Off.
- **Camera Views** Choose the camera's default view.
- **CPU Help** Determines whether the Computer controls your teammate. With this option Off, you must control both characters on a team. Note: Switch which character you control by using the Left Trigger.

- **Team Aimers** Turns On/Off both teams' icons which shows where the volleyball is aimed.

ASSIGN CONTROLLERS Allows you to choose which controller will control which character, or assign a player to the CPU.

QUIT



CREDITS

CREATED BY HYPNOTIX INC.

Executive Producer	Mike Taramykin
Producer	Mike Cayado
Assistant Producer	Stuart E. Zissu
Programming	Thomas Kirchner Charles Roberts Andrew Grabish Nicholas N. Pakidko Jeff Cameron Kahn Jekarl Lasse Faabeng Joshua Hunter
Additional Programming	Joe Mayer Chris Bond Frank Force
3D Artists	John Philip Sousa Jake Helms Twen Samuel Kwok Donny Hamilton Rich Diamant Brandon Yanez Keith Murray Jim Sinerco Steve Olsen
3D Animators	Mike Yosh Steve Rivera Pete Devlin Jason Vaughn Paul Diaz

2D Artists	Murad Ainuddin Adam Hreha John Gaertner Jason Shenkman John Trumbull
Additional Art	Nick Laing Sue McLaughlin Joe Miller
Soundtrack Executive Producer Music Supervisor Music Manager	Nile Rodgers Melinda Gedman Stephen Hughes
Music	Rob Warren Lemon Cello Music
Writing and Voice Direction	Brian Kahn David Pitlik
Voice Recording	ThirdPath Creative
Voice Actors	Steve Carell Max Koch Maureen Lovejoy Stefanie Kahn Katarzyna Putin Robert Beckwith Brian Kahn Jackie Maruschak Christine Ash James Robey
Motion Capture Services	Perspective Studios

SIMON & SCHUSTER INTERACTIVE

President/Publisher	Gilles Dana
Vice President/Creative Director	Jeff Siegel
Executive Producer	Diane Strack
Senior Producer	Bill Mooney
Associate Producer	Jo-el Rainey
Vice President of Sales, Marketing & Business Development	Peter von Schlossberg
Marketing Services Manager	Ellen Goldberg
Publicity Director	Peter Binazeski
Director of Sales & Licensing	Christina Kuzma
Online Marketing Manager	Stephen Hughes
Art Director	David S. Rheinhardt
Senior Designer	Stephen A. Ganade
Business Manager	John Crowe
Director of Financial Planning & Analysis	Jeff Hookey
Production Manager	Meng Meng Lim
The Team at @ SSI	Dewanda Howard Kim Kindya Mike Wallis

VIVENDI UNIVERSAL GAMES

Feza Sanigok
Koren Buckner
Lori Inman
Lisa Roth
Mary Barker
Maggie Pineda
Tom Bryan
Ted Mandelkorn
Michael Shelling
Randy Linch
Brandon Valdez
Cyra Talton
Michael Caradonna

ABSOLUTE QUALITY, INC.

QA Manager

Calvin Grove

Lead Testers

Matt Kutrik
John Kuhn

Testers

Chris 'T-Bag' Baguley
Kevin Cunningham
Justin Durlawanger
John Harold
Tom Herritt
Tim Lamb
Kevin Kauffman
Chris 'Mick' McMahon
Greg Wickham

Thanks to

Eva Lurie
Dave Watkins
Scott Berfield
Clinton Fowler
All the fine folks at Microsoft

SOUNDTRACK

Get It On (Performed by Diffuser)

Written by Tomas Costanza

Published by Happiness Is All The Rage Music (ASCAP)

Produced, Recorded and Mixed by Mark Trombino

Courtesy of Hollywood Records. © 2003 Hollywood Records, Inc

I Wonder (Performed by Diffuser)

Written by Tomas Costanza

Published by Happiness Is All The Rage Music (ASCAP)

Produced, Recorded and Mixed by Mark Trombino

Courtesy of Hollywood Records. © 2003 Hollywood Records, Inc

Scream and Shout (Performed by The Exit)

Written by Ben Brewer, Gunnar, Jeff Darosa (ASCAP)

Produced by Daniel Rey

Courtesy of Some Records © 2002

www.theexitrock.com

Radiation Suit and Now or Never (Performed by Hot Rod Circuit)

All songs © 2001 Hot Rod Circuit (SeSAC)

Hot Rod Circuit is:

Andy Jackson vocals, guitar

Casey Prestwood guitar, pedal steel

Jason Russell bass, vocals, piano

Michael Poorman drums

Produced by Brian McTernan and HRC

Engineered and Mixed by Brian McTernan

@ Salad Day Studios in Beltsville, MD

Mastered by Don C. Tyler @ Precision Mastering

Www.hotrod-circuit.com

earthtohrc@hotmail.com

Speed Kills (Performed by The Carnies Deluxe)

All songs written and produced by The Carnies Deluxe

© 2000 Dish Rag Publishing (ASCAP)

Courtesy of Fruity Satan Records

www.fruitysatan.com

Feel This (Performed by Dj Ashba)

Written by Dj Ashba (ASCAP) Chromebone Music

© 2003 Dj Ashba

www.djashba.com

Who I Am (Performed by Dj Ashba)

Written by Dj Ashba (ASCAP) Chromebone Music

© 2003 Dj Ashba

www.djashba.com

Put Some Weight On It (Performed by D.S.U.)

Written by Derek Manley, Keith Hamilton (ASCAP) B&R Music

Boomboyyah Publishing

© 2003 Buck-N-Run Music

Courtesy of Buck-N-Run Music

Hustlerz Inc. (Baller's) (Performed by Warrior)

Written by W. Khan, Syckle Cell, M. Reese, A. Towbin

Produced by Allen Towbin, M.Reese

Featuring Syckle Cell

© 2003 OHM Music & Film Works

Club Hoppin (Bounce) (Performed by Warrior)

Written by W. Khan, M. Reese, A. Towbin

Produced by Allen Towbin, Lorelei McBroom

Co-Produced by Lorelei McBroom

© 2003 OHM Music & Film Works

Punk Rock Girl (Performed by Off By One)

Written by J. Bishop, M. Gould, T. Easter, G. Brownwood (BMI)

© 2002 LMC/ MCA

Courtesy of LMC/ MCA

On My Way (Performed by Off By One)

Written by J. Bishop, M. Gould, T. Easter, G. Brownwood (BMI)

© 2002 LMC/ MCA

Courtesy of LMC/ MCA

Have Arrived (Performed by Cathy Ann)

Engineered & Produced by Bumblefoot

© 2003 Hermit Inc.

Courtesy of Hermit Inc.

The One Thing (Performed by Waterdown)

Written by Bischoff, Rieser, Waterdown

© 2001 Victory Records

Courtesy of Victory Records

Picketline (Performed by Waterdown)

Written by Bischoff, Rieser, Waterdown

© 2001 Victory Records

Courtesy of Victory Records

Meat (Performed by Bumblefoot)

Written by Ron Thal/ Neanderthal Noise Inc. (ASCAP)

Engineered & Produced by Bumblefoot

© 2003 Hermit Inc.

Courtesy of Hermit Inc.

Popstars Love This (Performed by Snow Dogs)

Written by Snow Dogs

© 2003 Victory Records (P) another victory inc. (ASCAP)

Courtesy of Victory Records

Hour of Sunshine (Performed by Snow Dogs)

Written by Snow Dogs

© 2003 Victory Records (P) another victory inc. (ASCAP)

Courtesy of Victory Records

Yakisoba (Performed by Avoid One Thing)

Written by J. Gittleman NOW YOU FLEAS MUSIC (ASCAP)

© 2002 Side One Dummy Records

Courtesy of Side One Dummy Records

Bright Lights, Big City (Performed by Madcap)

Written by A. Gonzalez, L. LeBaigue, J. Margolis, J. Mastantuono

© 2002 Madcap Partners Administered by Bob-A-Lew Songs (ASCAP)

Courtesy of Side One Dummy Records

Life is Good (Performed by Junk)

Written by Lloyd Neal

© © 2002

Courtesy of Spirit Music Group



DIFFUSER



The new record is
MAKING THE GRADE

Featuring the hit song
"I Wonder"

Available this summer from

**HOLLYWOOD
RECORDS**

www.diffuseronline.com

END USER LICENSE AGREEMENT

AGREED TO BE BOUND BY THE TERMS AND CONDITIONS OF THIS AGREEMENT. IF YOU DO NOT AGREE TO ALL OF THE TERMS OF THIS AGREEMENT, YOU MAY NOT INSTALL THE PROGRAM AND MUST IMMEDIATELY (WITHIN 15 DAYS OF PURCHASE) RETURN THE PROGRAM AND ALL ORIGINAL PACKAGING TO THE LOCATION WHERE YOU ACQUIRED IT.

This software program, any printed materials or user documentation, any on-line or electronic documentation, and any and all copies and derivative works of such software program and materials (the "Program") are the copyrighted work of Simon & Schuster Interactive, Inc. ("SSI"). All use of the Program is governed by the terms of this End User License Agreement ("License Agreement").

This Program is solely for use by end users according to the terms of this License Agreement. Any use, reproduction or redistribution of the Program not in accordance with the terms of this License Agreement is expressly prohibited.

1. **Limited Use License.** SSI hereby grants you a limited, non-exclusive license and right to install and use one (1) copy of the Program for your personal use only in connection with a Microsoft Xbox video game system. You may not network the Program or otherwise install it or use it on more than one console at a time.

2. **Ownership.** All title, ownership rights and intellectual property rights in and to the Program and any and all copies thereof (including but not limited to any files, computer code, themes, objects, characters, character names, stories, text, dialog, catch phrases, locations, concepts, artwork, animations, sounds, musical compositions, audio-visual effects, methods of operation, moral rights, any related documentation, and "appslet" incorporated into the Program) are owned by SSI or its licensors. The Program is protected by the copyright laws of the United States, international copyright treaties and conventions and other laws. All rights are reserved. The Program may contain certain licensed materials and SSI's licensors may act to protect their rights in the event of any violation of this Agreement.

3. **Responsibilities of End User.** Subject to the grant of license hereinafter, you may not, in whole or in part, copy, photocopy, reproduce, translate, reverse engineer, decompile, disassemble, decompile, or create derivative works based on the Program or any aspect of the Xbox game system, including Xbox operating system software, or remove any proprietary notices or labels on the Program without the prior written consent of SSI.

The Program is licensed to you as a single product. Its component parts may not be separated for use on more than one computer. You may permanently transfer all of your rights under this License Agreement, provided the recipient agrees to the terms of this License Agreement and you retain no copies of the Program, including copies stored on the game console and/or computer equipment. You may not exploit the Program or any of its parts for any commercial purpose including, but not limited to, renting, leasing or loaning the Program to others, or using the Program at a cyber café, computer gaming center or any other location based site.

4. **Limited Warranty.** EXCEPT AS EXPRESSLY SET FORTH BELOW, TO THE MAXIMUM EXTENT PERMITTED BY LAW, SSI EXPRESSLY DISCLAIMS ANY WARRANTY FOR THE PROGRAM. THE PROGRAM IS PROVIDED "AS IS" WITHOUT WARRANTY OF ANY KIND, EITHER EXPRESS OR IMPLIED, INCLUDING, WITHOUT LIMITATION, THE IMPLIED WARRANTIES OF MERCHANTABILITY, FITNESS FOR A PARTICULAR PURPOSE, OR NONINFRINGEMENT, regardless of whether SSI knows or had reason to know of your particular needs. No SSI employee, agent, dealer or distributor is authorized to modify this warranty, nor to make any additional warranties. The entire risk arising out of use or performance of the Program remains with you, however SSI warrants up to and including 90 days from the date of your purchase of the Program that the master disk on which the Program is furnished shall be free from defects in material and workmanship. In the event that the master disk proves to be defective during that time period, and upon presentation to SSI of proof of purchase of the defective Program, SSI will at its option correct any defect or provide you with a product of equal or lesser value.

5. **Limitation of Liability.** TO THE MAXIMUM EXTENT PERMITTED BY LAW, IN NO EVENT SHALL EITHER SSI, ITS PARENT, SUBSIDIARIES, AFFILIATES OR LICENSORS BE LIABLE IN ANY WAY FOR ANY LOSS OR DAMAGES OF ANY KIND RESULTING FROM THE USE OF THE PROGRAM INCLUDING, BUT NOT LIMITED TO, LOST PROFITS, LOSS OF GOODWILL, WORK STOPPAGE, COMPUTER FAILURE OR MALFUNCTION, DATA LOSS, DATA CORRUPTION OR ANY AND ALL OTHER DAMAGES OR LOSSES. Some states do not allow the exclusion or limitation of incidental or consequential damages, or allow limitations on how long an implied warranty lasts, so the above limitations may not apply to you. IN NO EVENT SHALL SSI'S CUMULATIVE LIABILITY IN CONNECTION WITH THIS AGREEMENT OR THE PROGRAM EXCEED THE AMOUNT PAID FOR THE PROGRAM BY YOU.

6. **Confidentiality.** The Program contains trade secrets and proprietary know-how that belong to SSI and it is being made available to you in strict confidence. ANY USE OR DISCLOSURE OF THE PROGRAM OR OF ITS ALGORITHMS, PROTOCOLS OR INTERFACES, OTHER THAN IN STRICT ACCORDANCE WITH THIS AGREEMENT, MAY BE ACTIONABLE AS A VIOLATION OF SSI'S TRADE SECRETS.

7. **Termination.** This License Agreement is effective until terminated. You may terminate the License Agreement at any time by destroying the Program and any copies thereof. SSI may, at its discretion, terminate the License Agreement in the event that you fail to comply with the terms and conditions contained herein. In such event, you must immediately destroy the Program and any copies thereof.

8. **Export Controls.** The Program may not be re-exported, downloaded or otherwise exported into (or to a national or resident of) any country to which the U.S. has embargoed goods, or to anyone on the U.S. Treasury Department's list of Specially Designated Nationals or the U.S. Commerce Department's Table of Denial Orders.

9. **Miscellaneous.** In the event any litigation is brought by either party in connection with this License Agreement, the prevailing party in such litigation shall be entitled to recover from the other party all the costs, attorneys' fees and other expenses incurred by such prevailing party in the litigation. This License Agreement shall be deemed to have been made and executed in the State of New York and any dispute arising hereunder shall be resolved in accordance with the laws of the State of New York. Any claim asserted in any legal proceeding by one of the parties against the other shall be commenced and maintained in any state or federal court located in the State of New York, New York County having subject matter jurisdiction with respect to the dispute between the parties. This License Agreement may be amended, altered or modified only by a written instrument specifying such amendment, alteration or modification, which is executed by both parties. In the event that any provision of this License Agreement shall be held by a court or other tribunal of competent jurisdiction to be unenforceable, such provision will be enforced to the maximum extent permissible and the remaining portions of this License Agreement shall remain in full force and effect. This License Agreement is the complete and exclusive agreement between the parties and supersedes all previous or contemporaneous agreements, proposals and communications with respect to this subject matter. Microsoft shall be an express, direct and intended third party beneficiary of this License Agreement, with the right to enforce all or any portion of the Agreement.

Obtaining Technical Support/Service

Email: support@ssi.techsupport.com

Telephone: 303-739-4020

Fax: 303-730-4513

©2003 Simon & Schuster Interactive, a division of Simon & Schuster, Inc. All Rights Reserved. Published by Simon & Schuster Interactive, a division of Simon & Schuster, the publishing operation of Viacom, Inc., 1300 Avenue of the Americas, New York, NY 10020. The scribe icon is a trademark of the Interactive Digital Software Association. All rights reserved. Microsoft, Xbox, Xbox Live and the Xbox Logo are either registered trademarks or trademarks of Microsoft Corporation in the U.S. and/or other countries and are used under license from Microsoft.