



BLACK



Electronic Arts, EA, the EA logo, EA SPORTS, the EA SPORTS logo, EA SPORTS BIG and the EA SPORTS BIG logo are trademarks or registered trademarks of Electronic Arts Inc. in the U.S. and/or other countries. EA™, EA SPORTS™ and EA SPORTS BIG™ are Electronic Arts™ brands.

Microsoft, Xbox and the Xbox logos are either registered trademarks or trademarks of Microsoft Corporation in the United States and/or other countries and are used under license from Microsoft.

EAJ07404903M



INTRODUCTION

Black™ takes you deep into the world of the unsanctioned military: beyond the army, beyond the law, beyond consequence. Your mission: to hunt down those that no-one else can stop. Let nothing stand in your way.

CONTENTS

COMPLETE CONTROLS.....	3
CUSTOM CONTROL CONFIGURATION	3
SETTING UP THE GAME	4
PLAYING THE GAME	5
PAUSE MENU	7
PROFILES	7
WARRANTY	9
CUSTOMER SUPPORT	9

COMPLETE CONTROLS

Take charge of every situation by mastering these controls. Experienced operatives looking to gain that vital edge should consult the Custom Control Configuration information below.

GENERAL GAMEPLAY



*when available

MENU CONTROLS

Highlight menu option	⬅ or ➡
Select highlighted menu option	A
Adjust selected option	⬅ or ➡
Go back/cancel	B

CUSTOM CONTROL CONFIGURATION

As well as the default configuration listed above, *Black* offers three alternative control setups, plus the option to create your own fully customised setup.

1. From the Main menu, select **OPTIONS, CONTROL SETUP** and then **CUSTOM CONTROL SETUP**: the Custom Setup screen appears.
2. Press ⬅ or ➡ to choose one of the preset Control Setups (**DEFAULT, SCOUT, ASSAULT** or **SOUTHPAW**) or select **CUSTOM** to create your own personalised configuration.
- To customise your chosen Control Setup, select **CUSTOMISE** and press A. Press ⬅ or ➡ to choose a button then press ⬅ or ➡ to change the control assigned to it.

SETTING UP THE GAME

To begin your mission:

1. At the Main menu screen, press **●1** or move **●1** to highlight **START MISSION** and press **●A** to continue.
2. The Difficulty screen appears – press **●1** or move **●1** to select a Difficulty level: **EASY**, **NORMAL**, **HARD** or **BLACK OPS**.
 - Black Ops Difficulty level is not available initially. For more information about Difficulty levels see Objectives and Difficulty Levels on p. 6.
3. After the intro movie, you begin your first mission.

To continue a saved mission:

1. At the Main Menu screen, select **CONTINUE MISSION**.
 - To view details of your current rank and game statistics, choose **OPERATOR PROFILE**.
2. The Mission Select screen appears: press **●←** or move **●←** to choose an available mission and press **●A** to continue.
3. The Difficulty screen appears – press **●1** or move **●1** to select a Difficulty level and press **●A** to continue.
4. After the intro movie, your mission begins.

OPTIONS

Select **OPTIONS** from the Main menu to adjust the following game features:

CONTROL SETUP

Turn **Toggle Crouch**, **Invert Look** and **Vibration** **ON** or **OFF**, and select **CUSTOM CONTROL SETUP** to choose a new controller configuration or create your own custom set-up (see Custom Control Configuration on p. 3).

SOUND SETUP

Adjust sound effects and music volume, choose a Custom Soundtrack and switch the soundtrack **Play Mode** to **SHUFFLE** or **SEQUENTIAL**.

PICTURE SETUP

Adjust screen **BRIGHTNESS**.

PROFILE

Create a **NEW Black Profile**, **LOAD** or **SAVE** an existing one and turn **Autosave** **ON/OFF** (see Saving and Loading on p. 7).

PLAYING THE GAME

Health bar – when the bar runs low, directional button **↓** to use an available Health Pack

Number of bullets remaining in current magazine

Number of Health Packs carried

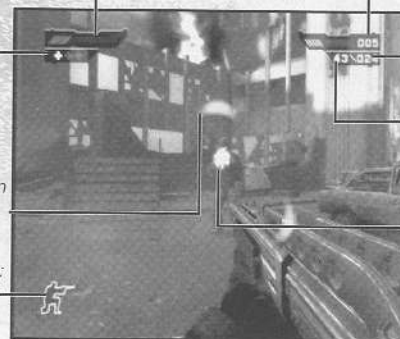
Total number of bullets remaining

Number of grenades carried

Red Hit Ring shows direction of enemy fire

Reticule – changes from white to red when an enemy is targeted

Indicates your current stance: standing or crouching



HEALTH

You can find two kinds of health-boosting pick ups on every mission: **Health Packs** and **First Aid Kits**.

- Up to three of the large **Health Packs** can be carried for later use: press **●↓** to use one to refill your health bar.
- **First Aid Kits** are used instantly when you collect them, giving you an immediate health boost.

AIMING

Click **●** to zoom in for accurate or long-distance targeting. The aim function only works with certain weapons.

- Use aim when equipped with the **Sniper Rifle** to take advantage of the double-zoom capability offered by its telescopic sights. Press **↑** to select **2x zoom** or **5x zoom**.

FIRING MODE

Some weapons have more than one firing mode: press **●↑** to choose the best attack for your current situation.

- Firing modes differ depending on which weapon you have equipped. For example, the **AK47** can be switched between fully automatic fire, more controlled semi-automatic bursts or precise single shots.

OBJECTIVES AND DIFFICULTY LEVELS

Each mission contains a number of Objectives, both Primary and Secondary. Primary Objectives are revealed as you progress through each mission, whilst Secondary Objectives must be discovered:

Blackmail	Find and destroy incriminating evidence obtained by the USA's enemies to safeguard American national security.
Intel	Collect vital intelligence data on terrorist activity.
Recon	Track down information that could help with your upcoming missions.
Armament	Discover hidden weapons throughout the levels.
Destruction	Smash enemy resources and more: find and destroy objects in each level.

- To view information about Secondary Objectives, select OBJECTIVES STATUS from the Pause Menu.

You must accomplish all Primary Objectives to complete your current mission. To progress to the next mission, you may also need to complete a certain number of Secondary Objectives, depending on the chosen Difficulty level:

EASY NORMAL and HARD

Only Primary Objectives need to be fulfilled. All Primary and a number of Secondary Objectives must be accomplished, as specified at the start of the level.

BLACK OPS

The ultimate test: all Objectives must be completed.

The Difficulty level also determines how many Health Packs are available in a mission and what completing the mission unlocks:

- Complete a mission on your chosen Difficulty level to unlock the next mission for play on the same Difficulty level and all easier levels.
- Complete all missions on Hard Difficulty level to unlock the Black Ops Difficulty level.
- Complete missions on Normal, Hard and Black Ops Difficulty levels to unlock extra weapons.

PAUSE MENU

Press **O** to pause the game, view your current objective status and access game options. Select CONTINUE to return to the action.

OBJECTIVES STATUS

View your current mission status and gauge your success so far.

- Select RESTART MISSION to begin the current mission again. Select QUIT to exit the current mission and return to the Main menu. Your progress in that mission will be lost.
- Select OPTIONS to turn Toggle Crouch, Invert Look and Vibration ON or OFF and adjust sound and music volumes.

SAVING AND LOADING

PROFILES

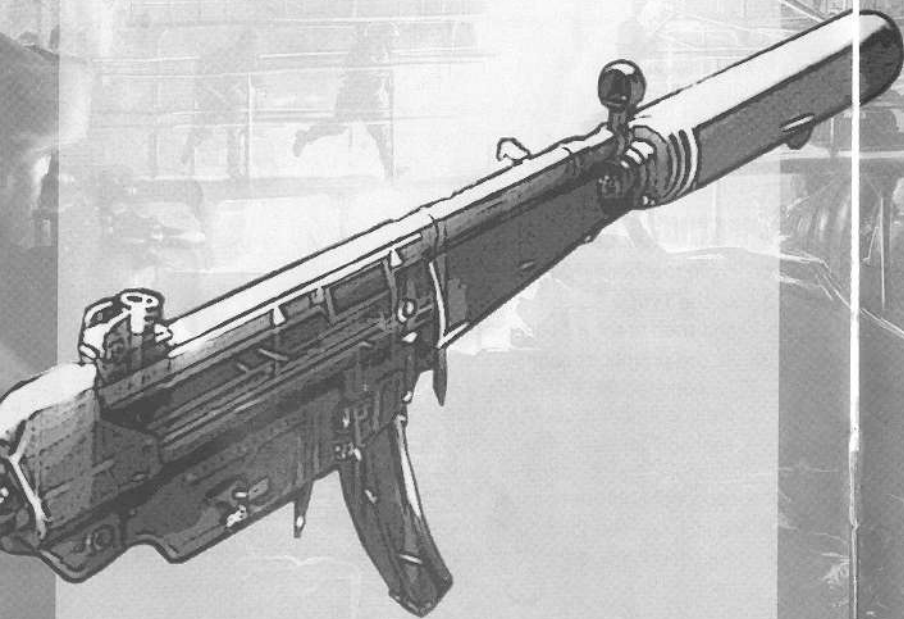
Create an Operator Profile to keep a personal record of your progress in Black. When Autosave is on, you are prompted to create a Profile after completing your first mission – your progress through the game will be saved to that Profile. You can also create a Profile manually.

CREATING A PROFILE:

1. From the Main menu, select OPTIONS and then PROFILE.
2. At the Profile screen, select NEW to create a new Profile, choose YES and then enter a Profile name using the onscreen keyboard.
3. At the prompt choose YES or NO to turn Autosave on or off. When Autosave is on, your progress and any Options changes you make are automatically saved, overwriting data without confirmation.
 - Turning Autosave off is not recommended, as progress and Options changes are not saved automatically. To save manually, choose SAVE from the Profile screen.
4. Select an empty slot to save your Profile or choose to overwrite an existing Profile. Up to three separate Profiles can be created on the hard disk.
5. Your new Profile is saved. Choose CONTINUE to return to the Profile menu.

LOADING A PROFILE

1. From the Main menu, select **OPTIONS** and then **PROFILE**.
2. At the Profile screen, select **LOAD** to load an existing Profile. If your progress in your current game has not been saved it will be lost.



Notice

Electronic Arts reserves the right to make improvements to this product described in this manual at any time and without notice. This manual, and the software described in this manual, is under copyright. All rights are reserved. No part of this manual or the described software may be copied, reproduced, translated or reduced to any electronic medium or machine-readable form without the prior written consent of Electronic Arts Ltd. Customer Services, PO Box 181, Chertsey, KT16 0YL, England, United Kingdom. Electronic Arts makes no warranties, conditions or representations express or implied, with respect to this manual, its quality, merchantability or fitness for any particular purpose. This manual is provided "as is". Electronic Arts makes certain limited warranties with respect to the software and the media for the software. In no event shall Electronic Arts be liable for any special, indirect or consequential damages. These terms and conditions do not affect or prejudice the statutory rights of a purchaser in any case where a purchaser is a consumer acquiring goods otherwise than in the course of a business.

Warranty

Limited Warranty

Electronic Arts warrants to the original purchaser of this computer software product that the recording media on which the software programs are recorded will be free from defects in materials and workmanship for 90 days from the date of purchase. During such period defective media will be replaced if the original product is returned to Electronic Arts at the below address, together with a dated proof of purchase, a statement describing the defects, the faulty media and your return address. This warranty is in addition to, and does not affect your statutory rights in any way. This warranty does not apply to the software program themselves, which are provided "as is", nor does it apply to media which has been subject to misuse, damage or excessive wear.

Returns After Warranty

Electronic Arts will replace user-damaged media, current stocks allowing, if the original media is returned with a Eurocheque or postal order for £10 per disc, payable to Electronic Arts Ltd. If you have any queries on warranty replacements or user-damaged discs or manuals, please e-mail us on uk-warranty@ea.com. Please note that this is only for warranty and NOT technical queries. Please remember to include full details of the defect, your name, address and, where possible, a daytime telephone number where we can contact you.

Electronic Arts Customer Warranty, PO Box 181, Chertsey, KT16 0YL, United Kingdom.

CUSTOMER SUPPORT -Here to help you!

Problem? Question? If you are having problems with your game, we are here to help.

AUSTRALIA

Electronic Arts Australia Support Hotline:
1902 261 600*

*Sirius calls charged at \$2.48 per minute, GST inc.
Calls from Mobile & Public phones higher (If you are under 18 years of age parental consent is required).
Operating hours from 9am to 8pm 7 days a week, as well as pre-recorded information 24 hours a day.

Customer Service Address:

Electronic Arts
PO Box 432
Southport QLD
4215, Australia

Email Customer Support:

ozsupport@ea.com

SOUTH AFRICA

Game Smith: (011) 740-0615/6, (083) 918-0083
Electronic Arts South Africa
PO Box 3180
Rivonia
2128

NEW ZEALAND

Electronic Arts New Zealand, Games Hotline: **0900 58885*** (If you are under 18 years of age parental consent required).

*Calls charged at \$1.99 per minute inc GST 7 days a week 9am - 8pm. Calls from Mobile & Public phones are higher.

Customer Service Address:

Electronic Arts New Zealand
PO Box 47596
Ponsonby
New Zealand

Email Customer Support:

nzsupport@ea.com

KEEP UP WITH THE LATEST EA NEWS..!

If you want to keep up with all the latest news, downloads and coolest updates from EA then all you have to do is register as an EA Direct Member. It's easy! Register now on

www.eagames.com.au
or
www.easports.com.au

As an EA Direct Member you will be kept in the 'know' as to what is now and hot from EA Australia, delivered directly to your inbox.