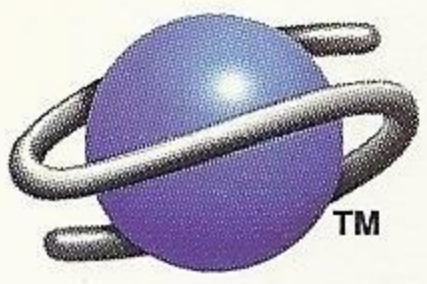
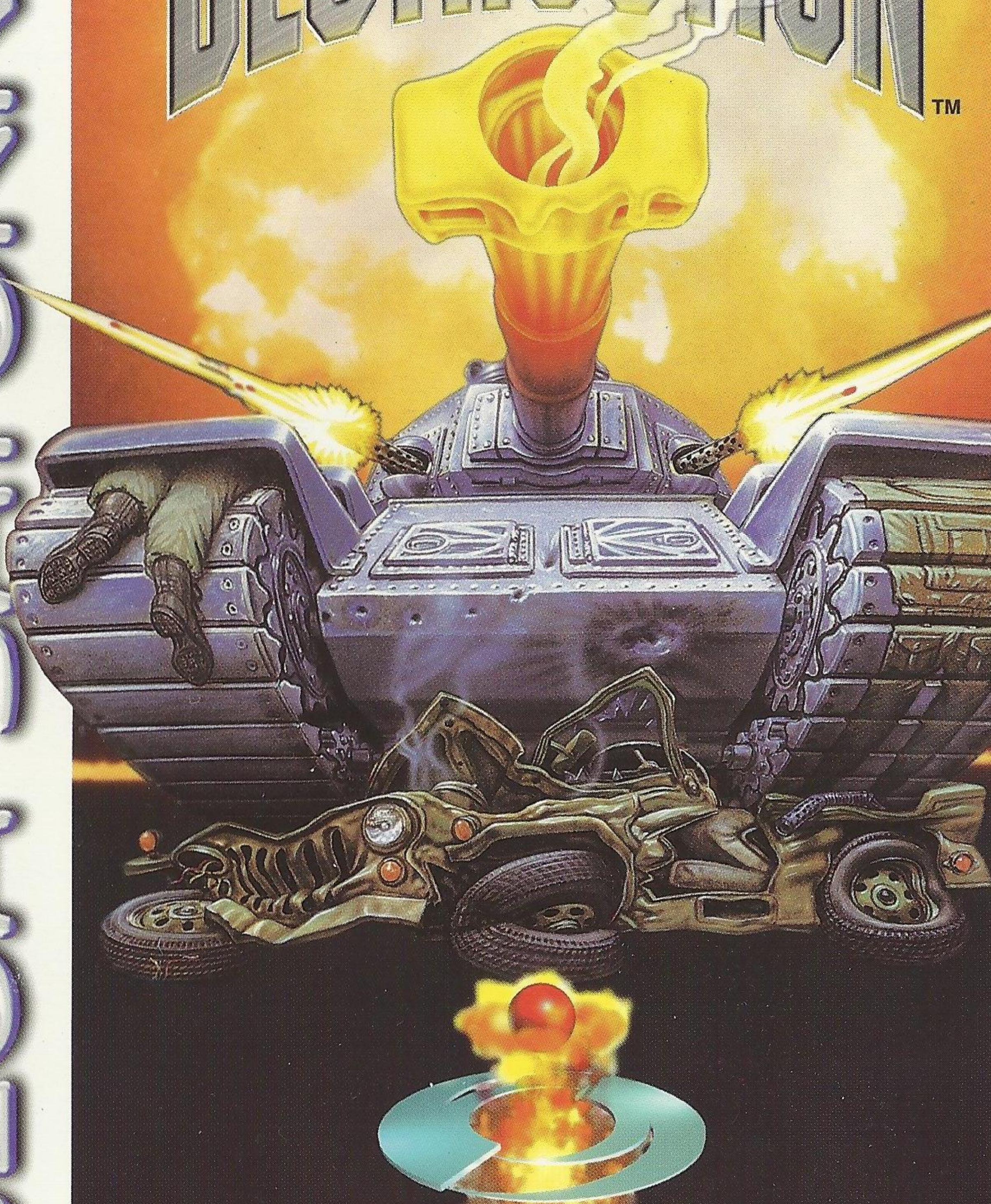


SEGA™



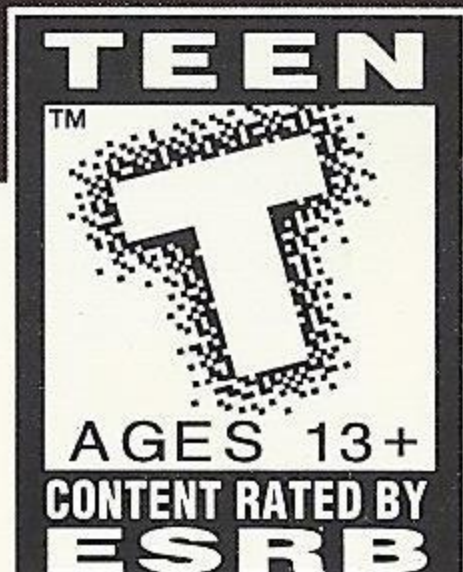
SEGA SATURN™

# MASS DESTRUCTION™



ASC GAMES™

LICENSED BY SEGA ENTERPRISES, LTD.  
FOR PLAY ON THE SEGA SATURN™ SYSTEM



T-18007H

# **WARNING: READ BEFORE USING YOUR SEGA SATURN™ GAME CONSOLE**

## **EPILEPSY WARNING**

A very small percentage of individuals may experience epileptic seizures when exposed to certain light patterns or flashing lights. Exposure to certain patterns or backgrounds on a television screen or while playing video games, including games played on the Sega Saturn™ console, may induce an epileptic seizure in these individuals. Certain conditions may induce previously undetected epileptic symptoms even in persons who have no history of prior seizures or epilepsy. If you, or anyone in your family, has an epileptic condition, consult your physician prior to playing. If you experience any of the following symptoms while playing a video game - dizziness, altered vision, eye or muscle twitches, loss of awareness, disorientation, any involuntary movement, or convulsions - IMMEDIATELY discontinue use and consult your physician before resuming play.

## **WARNING TO OWNERS OF PROJECTION TELEVISIONS**

Still pictures or images may cause permanent picture-tube damage or mark the phosphor of the CRT. Avoid repeated or extended use of video games on large-screen projection televisions. Refer to your projection TV instruction manuals for more details.

## **PRECAUTIONS TO TAKE DURING USE**

- Do not stand too close to the screen. Sit a good distance away from the screen, as far away as the length of the cable allows.
- Preferably play the game on a small television screen.
- Avoid playing if you are tired or have not had much sleep.
- Make sure the room in which you are playing is well lit.
- Rest for at least 10 to 15 minutes per hour while playing a video game.

## **HANDLING YOUR SEGA SATURN™ DISC**

- This compact disc is intended for use ONLY with the Sega Saturn™ game console.
- Do not bend, crush, or submerge it in liquids.
- Do not leave it in direct sunlight or near a radiator or any other source of heat.
- Be sure to take an occasional rest break during extended play. Keep this compact disc clean. Always hold the disc by the edges and keep it in its protective case when not in use. Clean the disc with a lint-free, soft, dry cloth (preferably cotton), wiping in straight lines from the disc center towards the outer edges. Never use solvents or abrasive cleaners.

This product has been rated by the Entertainment Software Ratings Board (ESRB). For information about the ESRB rating, or to comment about the appropriateness of the rating, please contact the ESRB at 1-800-771-3772.

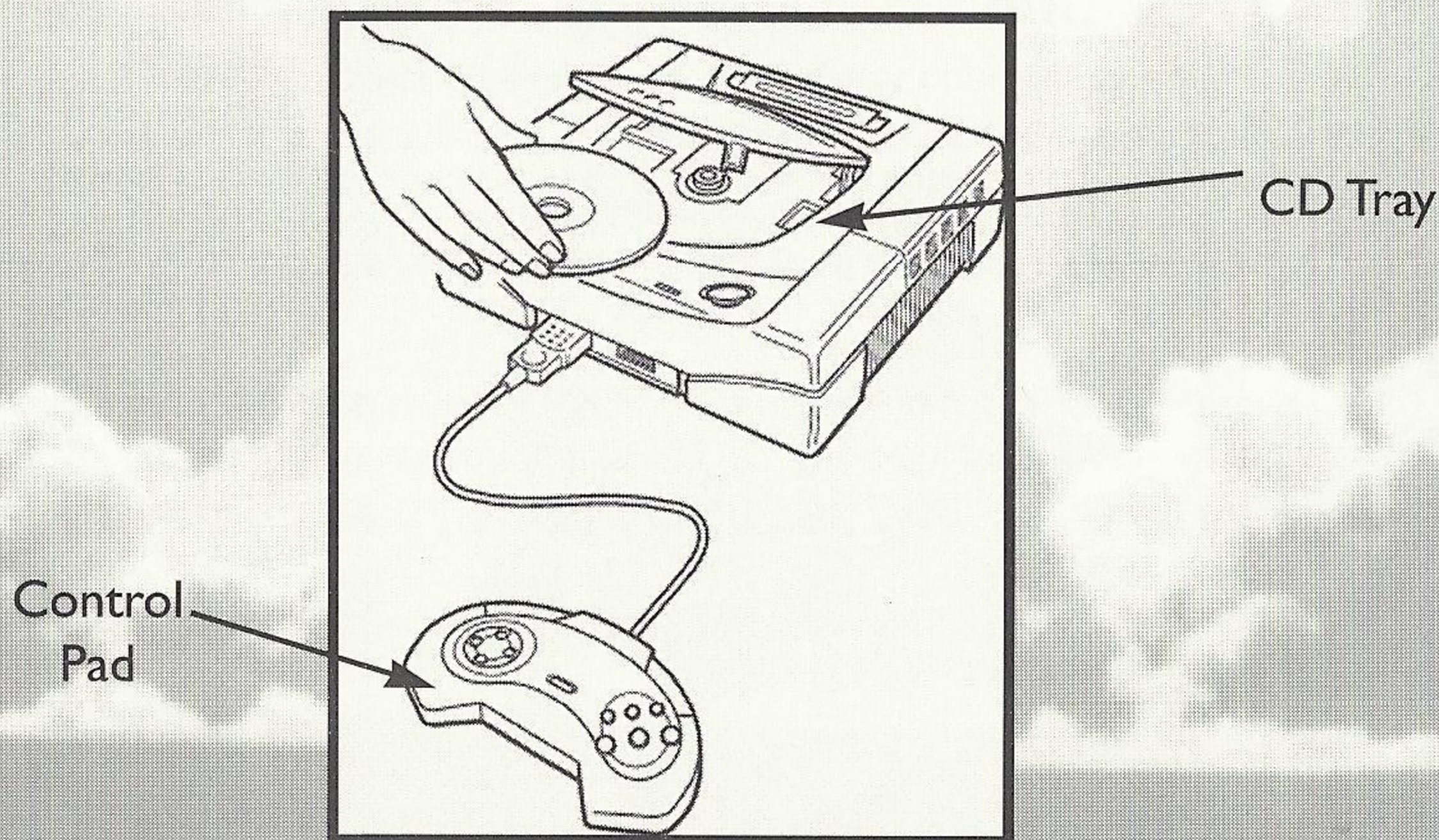
## TABLE OF CONTENTS

Sega Saturn™ Setup.....	2
<b>CONTROL SUMMARY.....</b>	<b>3</b>
<b>You Have One Mission: Mass Destruction™... </b>	<b>4</b>
<b>Don't Just Sit There, SHOOT! .....</b>	<b>5</b>
<b>Game Options.....</b>	<b>6</b>
<b>Mission Selection .....</b>	<b>6</b>
<b>Tank Selection.....</b>	<b>7</b>
<b>Mission Briefing &amp; Objectives.....</b>	<b>8</b>
<b>Tank System Overview.....</b>	<b>9</b>
<b>Map Screen .....</b>	<b>10</b>
<b>Weapons Systems .....</b>	<b>11-12</b>
<b>Saving .....</b>	<b>12</b>
<b>Loading A Game .....</b>	<b>13</b>
<b>Pause Menu.....</b>	<b>13</b>
<b>Credits.....</b>	<b>14 -15</b>
<b>Mass D Notes .....</b>	<b>16</b>
<b>Warranty.....</b>	<b>17</b>

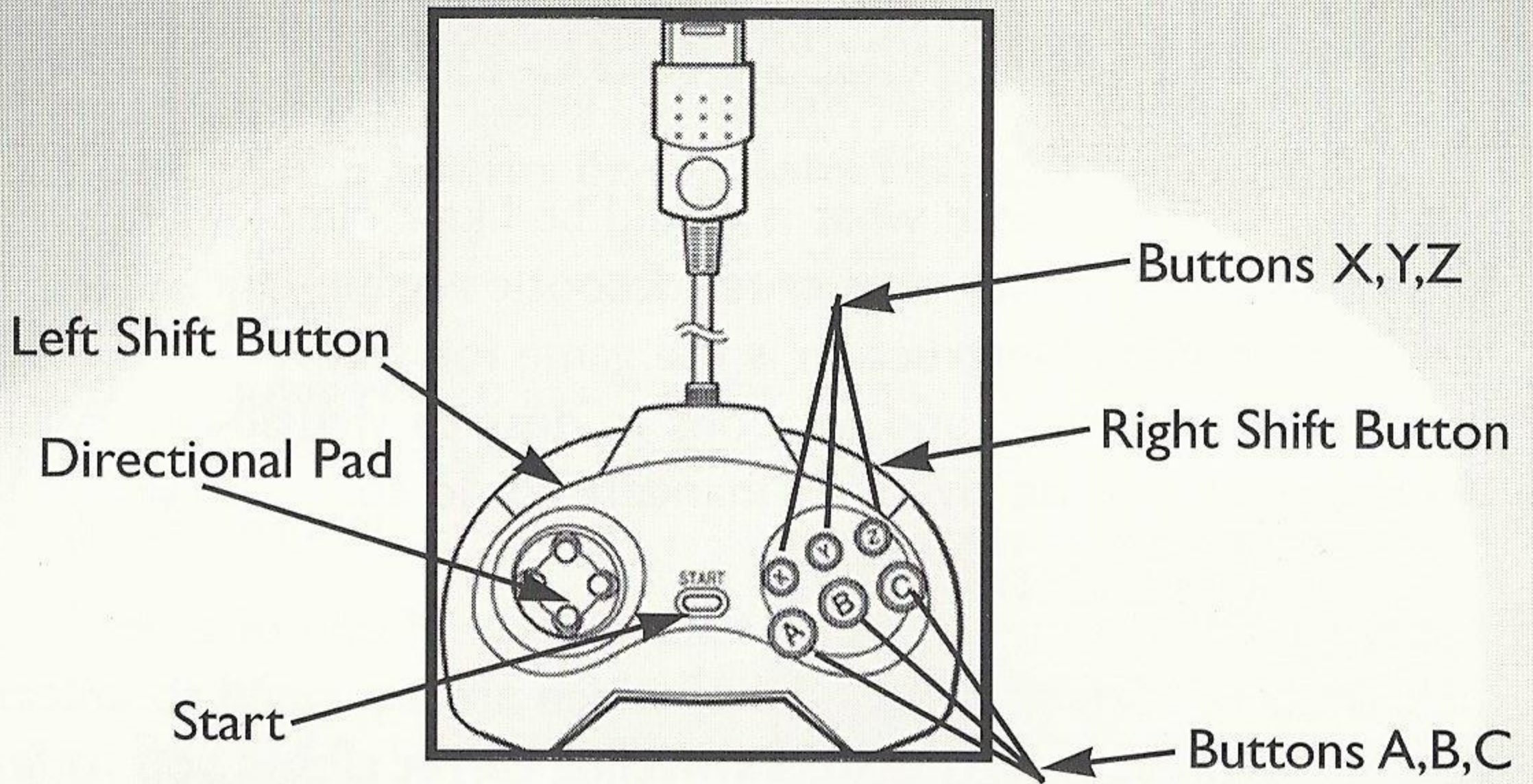
1. Set up your Sega Saturn™ System as described in its instruction manual. Plug in Control Pad 1. (Note: Mass Destruction™ is for one player only).
2. Place the Mass Destruction disc, label side up, in the well of the CD tray and close the lid.
3. Turn on the TV or monitor and the Sega Saturn™ System. The Sega Saturn™ logo will appear on screen. If nothing appears, turn the system OFF and make sure it is set up correctly before turning it on again.
4. After a moment, the memory management screen will appear allowing you to select where you wish to save your games. Highlight either System Memory or Cartridge Memory (only if you have an external memory cartridge inserted into the Saturn) and press START.
5. If you wish to stop a game in progress and return to the Main Menu, simultaneously press Buttons A, B, C and START on the Sega Saturn™ Control Pad. When the Title Screen appears, press START again to go to the Main Menu.

**IMPORTANT:**

Your Sega Saturn™ CD contains a security code that allows the disc to be read. Be sure to keep the disc clean and handle it carefully. If your Sega Saturn™ System has trouble reading the disc, remove the disc and wipe it carefully, starting from the center of the disc and wiping straight out toward the edge.



# CONTROL SUMMARY



## MENU CONTROLS

Move Cursor Up  
 Move Cursor Down  
 Modify Selection  
 Confirm Selection

## BUTTONS

Up ↑  
 Down ↓  
 Left or Right ←→  
 START

## TANK MOVEMENT

Move Forward  
 Move Backwards  
 Rotate Tank Left  
 Rotate Tank Right

D-Pad Up ↑  
 D-Pad Down ↓  
 D-Pad Left ←  
 D-Pad Right →

## TURRET MOVEMENT

Rotate Turret Clockwise  
 Rotate Turret Counter Clockwise  
 Center the Turret

Right Shift  
 Left Shift  
 Z

## WEAPON SELECTION

Toggle Weapon Select Left  
 Toggle Weapon Select Right  
 Fire Current Weapon

A  
 B  
 C

## HEADS-UP DISPLAY

Turn Radar On/Off  
 Activate Mission Briefing/Map

X  
 Y

## GAME CONTROLS

Pause the game

START

# YOU HAVE ONE MISSION: MASS DESTRUCTION™

If you've ever wondered what it would be like to implement a "scorched earth" policy on a cruel, despotic regime (and who hasn't), then Mass Destruction is the game for you. Not only will you be given the tools and weapons to destroy virtually everything in sight, you'll also be given the mandate to do so.

To assist you in your task, you'll take control of one of three multi-armored attack tanks -- all of which are equipped to unleash a variety of weapons. The 360° swiveling turret allows you to fire in any direction (regardless of which way you're facing), so that you can't be backed into a corner. Each weapon is designed for its own special purpose. Therefore, weapon selection and management is important -- especially in the more difficult campaigns.

At the beginning of each mission, you'll be briefed about the primary and secondary objectives. Make sure to read each briefing carefully to pick up as many clues as possible. The more information you have, the less damage you'll take and the more destruction you can cause.

With over 20 different missions on four terrain types (ranging from Arctic to Urban), there's enough variety and action to keep you occupied for a long time. Our stunning 3D gaming world will dazzle you with more explosions than you've ever seen. Overkill is the order of the day. Your prejudice against the enemy can never be too extreme.

# DON'T JUST SIT THERE... SHOOT!

Once the game has loaded, press the START button to load the main menu screen. Using the D-Pad, you may select **New Game**, **Load Game**, or **Options** from the menu.

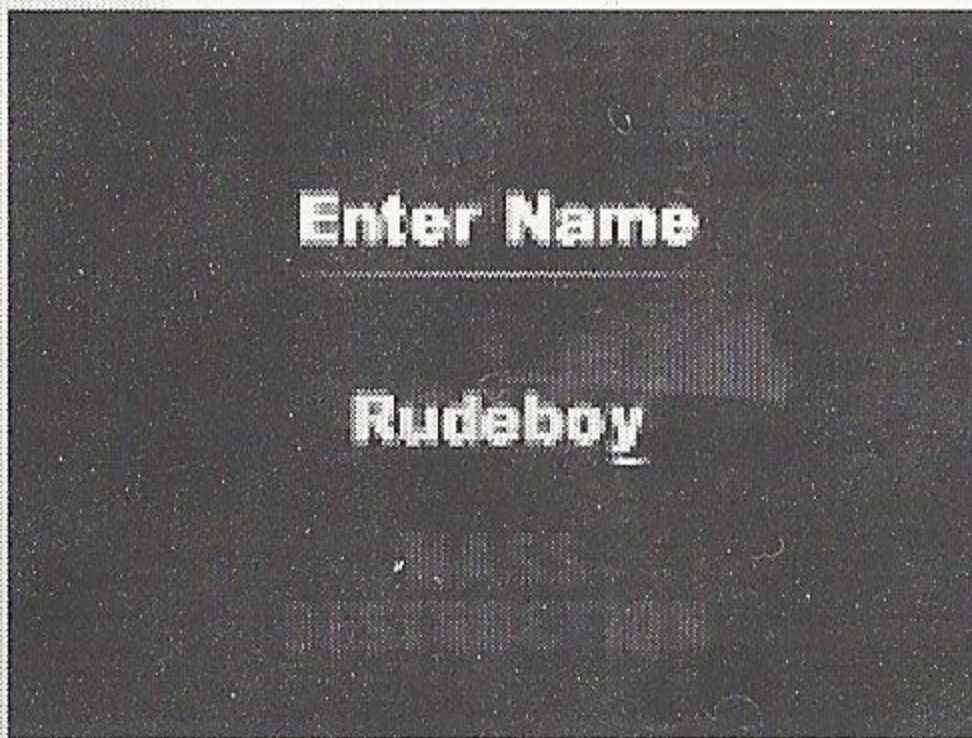
## NEW GAME

This option allows you to start a new game. After selecting this option, you will then be prompted to enter a name for the tank commander.



## ENTER NAME

To enter a name on the Tank Commander screen, use the following controls:

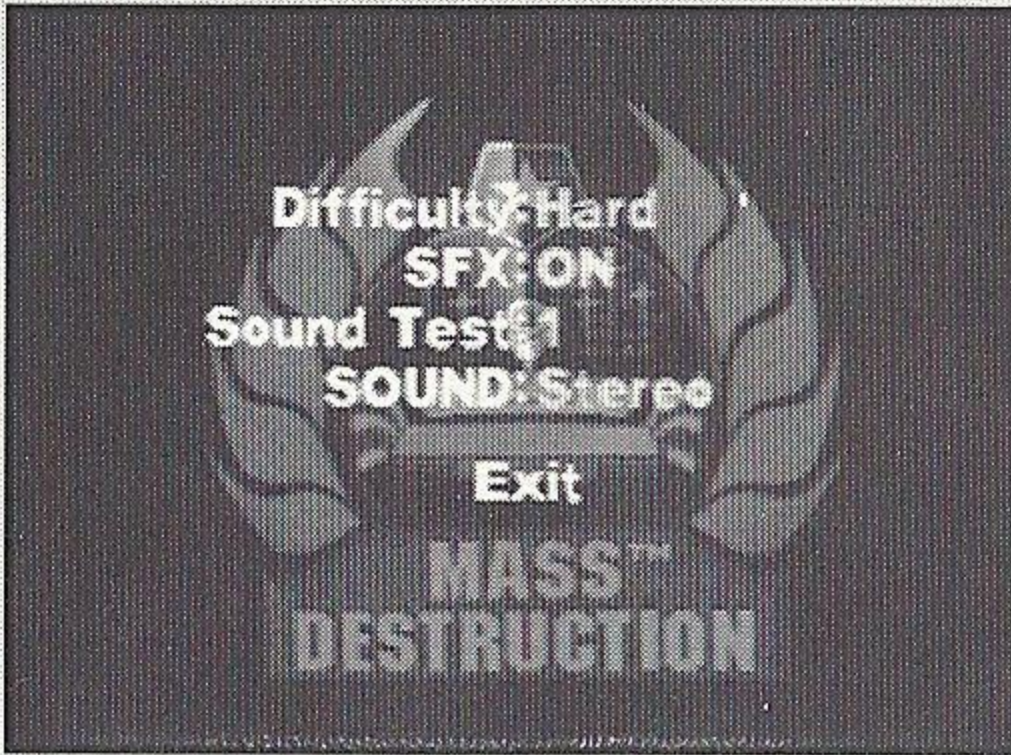


- |                               |     |
|-------------------------------|-----|
| To Choose a Character         | ↑ ↓ |
| To Capitalize a Letter        | A   |
| To Move to the Next Space     | R   |
| To Move to the Previous Space | L   |
| To Delete a Character         | C   |

**Note:** Each name is limited to 7 characters.

Once you've entered in all the characters in the name, press START and the Game Options screen will appear.

## GAME OPTIONS



On the Options screen, you can choose the level of **Difficulty** for the missions. Turn the **SFX** On or Off, and perform a number of sound tests.

### EASY

Choose this level of difficulty if you are afraid of your own shadow. The enemy is slow to respond and the enemy tanks seem to have all the firepower of a BB gun. Strictly for Novices.

### MEDIUM

For those more seasoned gamers, this difficulty should pose more of a challenge. The enemy is both stronger and smarter. Don't expect to pass this level on your first time through.

### HARD

Choose this level of difficulty if you love the smell of napalm in the morning. Novices and casual gamers need not apply here. The enemy's hits do more damage, and attack in multiple waves. Not for the easily frustrated or feint of heart.



## MISSION SELECTION

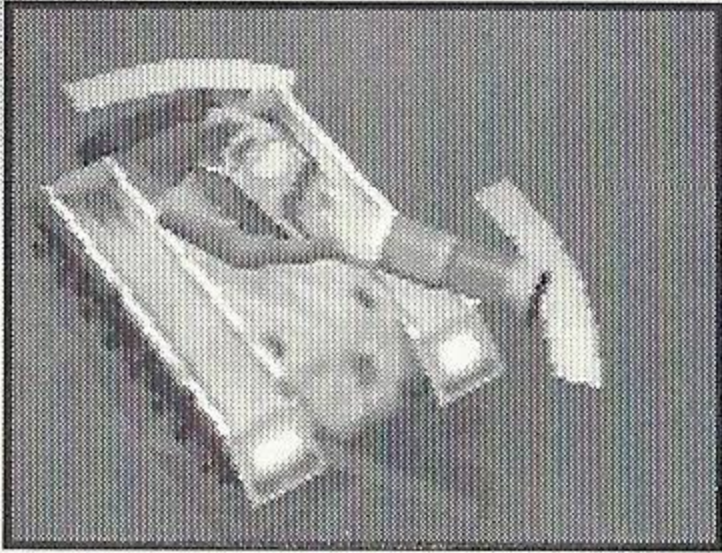
Currently there are five global hot spots which require your skills. Global Command has broken each of these campaigns into a series of missions. Each series of missions must be completed in the designated

order. When a mission becomes accessible, the red "X" on the folder disappears. Once you highlight it, press the START button to move to the Tank Selection screen. Mission folders marked with a tank are completed missions, but can be replayed for additional points.



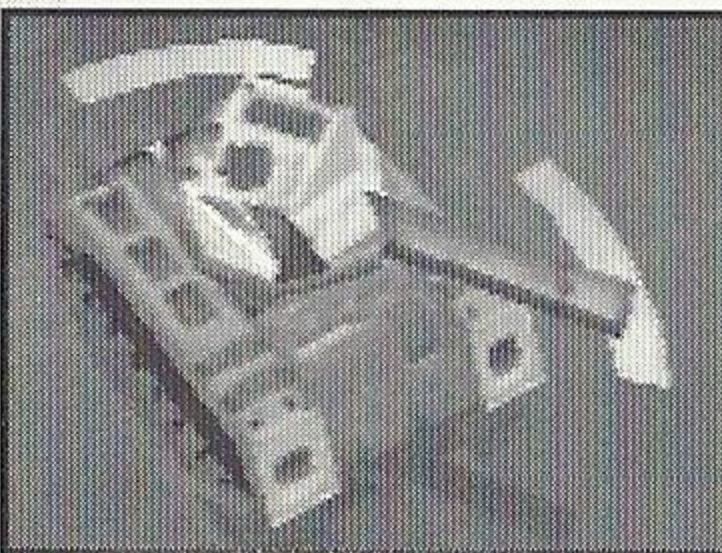
## TANK SELECTION

At the start of a new game, you command one of three tanks. Although each tank is equipped with the same arsenal of weapons, the speed and handling characteristics of the tanks differ greatly.



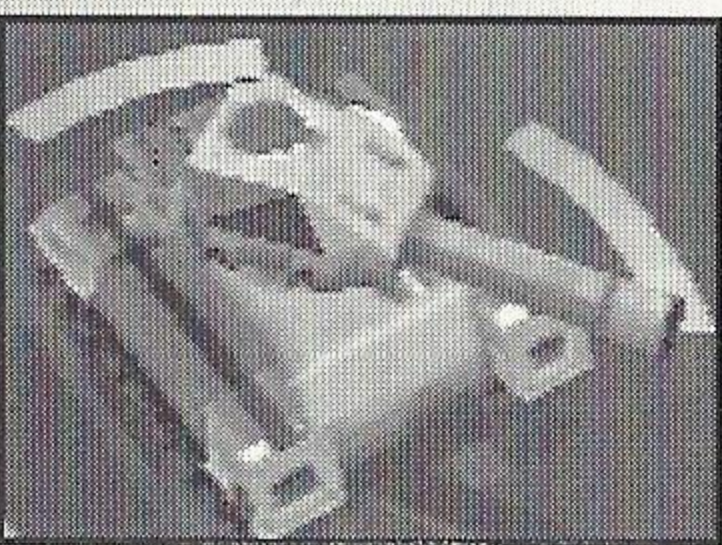
NAME: CHEETAH  
SPEED: 55 Kph  
ARMOR: 75 mm Tungsten Steel Alloy

The Cheetah series is built for high-speed, hit and run attacks on enemy installations. However, its speed comes at the cost of reactive armor plating. This makes the Cheetah unable to stand up against heavy barrages of enemy fire for any length of time.



NAME: COBRA  
SPEED: 20 Kph  
ARMOR: 250 mm Carbon Polymer  
Reactive Armor

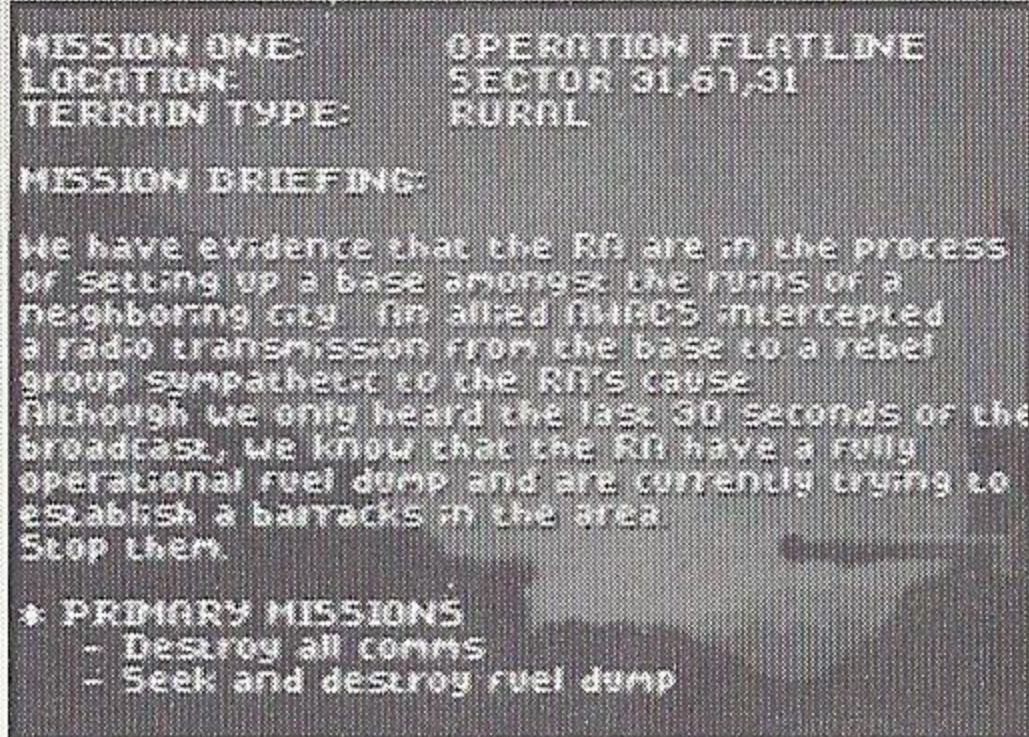
The Cobra series is designed as our main assault tank. Its reactive armor gives greater protection when attacking heavily fortified positions. The greater weight of the reactive armor limits the mobility and speed of the Cobra, thus, making it vulnerable to quicker and more maneuverable enemy armored units.



NAME: VIPER  
SPEED: 35 Kph  
ARMOR: 150 mm Carbon Polymer  
Reactive Armor

The Viper incorporates the latest improvements in armor and power. While equipped with the less reactive armor than the Cobra series, the new turbine engines allow for greater speed and maneuverability. This combination should make the Viper a quick and lethal force on the battlefield.

# MISSION BRIEFING



The Mission Briefing Screen gives you detailed information regarding the terrain and objectives for your current mission. Pay close attention to the briefing for the latest intelligence from the field -- it may just save your life. Listed at the bottom of the screen are the primary missions which you must

complete before you will receive the location of the evacuation point.

## MISSION OBJECTIVES

**Primary Objectives:** In order to complete a mission, you must accomplish the primary objectives. In some missions, the primary objectives must be completed in a particular order (in which case, you won't be given the next primary objective until you complete the current one). Consult the Mission Objectives screen (accessed with the Y-button) to help plan your strategy.

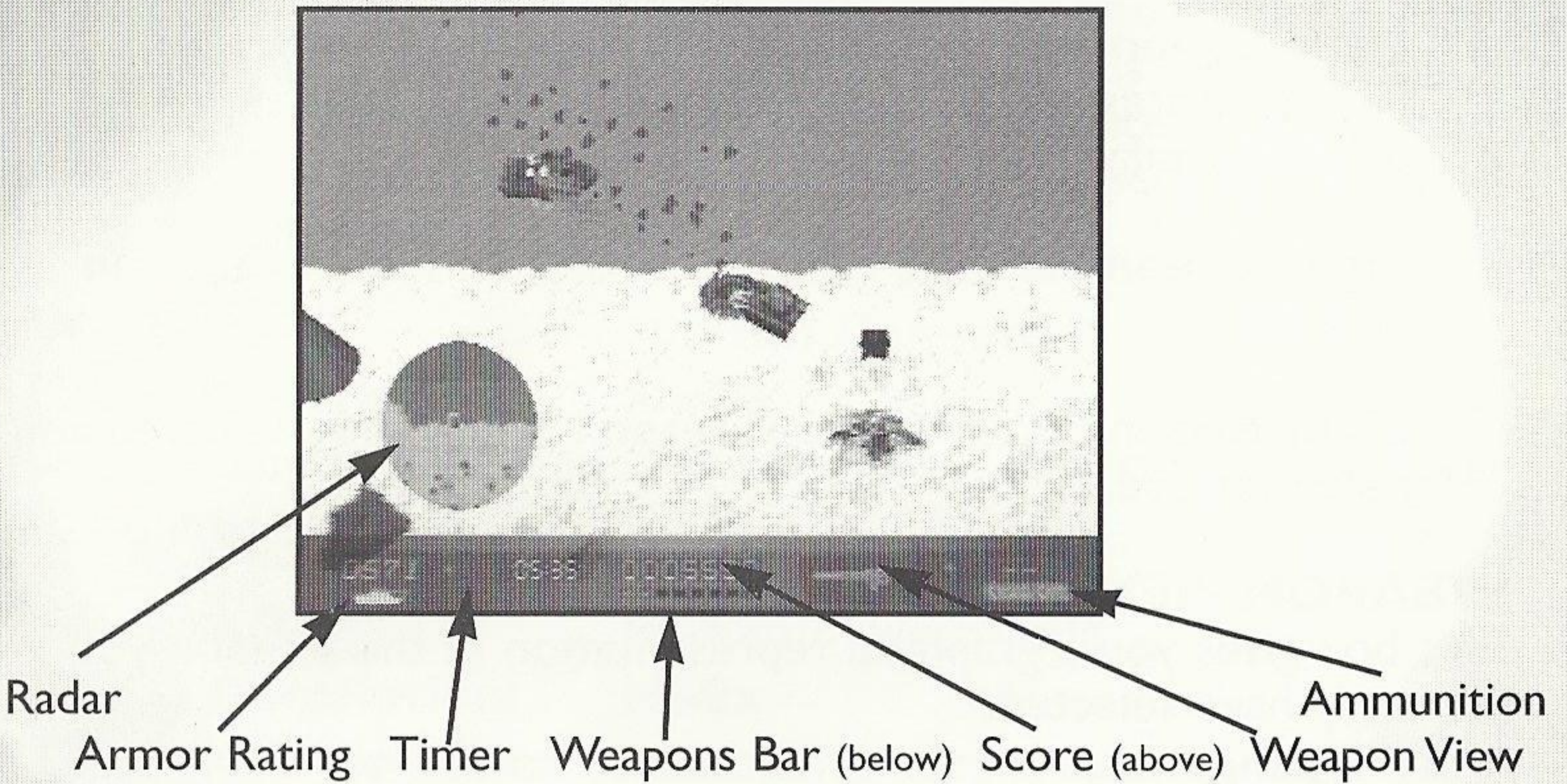
**Secondary Objectives:** Some missions include Secondary Objectives. Completing all the Secondary Objectives in a mission opens an additional extraction point, which leads to a mission different from the Primary extraction point. Secondary Objectives also award bonus points upon completion of the mission.

**Bonus Objectives:** Each mission contains Bonus Objectives, which are completed by destroying specific structures or by taking out certain soldiers or vehicles. When you complete a Bonus Objective, a notification appears on-screen and in the Mission Objectives screen. Like Secondary Objectives, Bonus Objectives award bonus points at the end of the mission.

**Hidden Objectives:** Some missions contain a Hidden Objective, which when completed activates a second extraction point that leads to a new mission, previously inaccessible. Hidden Missions are represented as folders in the Mission Selection screen and cannot be accessed until the Hidden Objective is completed. (Note: there is no on-screen notification when a Hidden Objective is completed). If you find that one of the mission folders is inaccessible, it is likely the previous mission contains a Hidden Objective which still needs to be completed. During your mission, you can uplink to defense net to recall the mission objectives as well as view a map of the area by pressing Y.

## TANK SYSTEM OVERVIEW

Once your tank arrives at the landing zone, the on-board systems will power-up and you will begin your mission.



Your Heads-Up Display (H.U.D.) indicates the status of your tank. The readouts are as follows:

### ARMOR RATING

This counter begins at 1000 and decreases each time the tank is hit by enemy fire. If the rating reaches zero, the engines will overheat and explode. Replacement armor can be found on the battlefield in white crates marked with a red cross. Run over these crates to help refit your tank when your armor runs low. (In addition, the tank icon beneath the rating changes color as your armor rating decreases).

### TIMER

This indicator keeps track of the elapsed time on the battlefield. Compare this time with the level par time upon completion of the mission.

### SCORE

This indicator represents the amount of damage which you have done during your mission.

## WEAPONS BAR

Eight small markers indicate the status of the weapon systems on your tank. The type of weapon corresponds to the marker on the far left. Each marker has three possible colors which indicate its current status.

**Dark Green** indicates that this weapon is out of ammo. Pick up crates on the battlefield to replenish your supply of the necessary ammo.

**Light Green** indicates that the weapon has ammo and can be used.

**Light Red** indicates that the weapon is currently selected and ready for use.

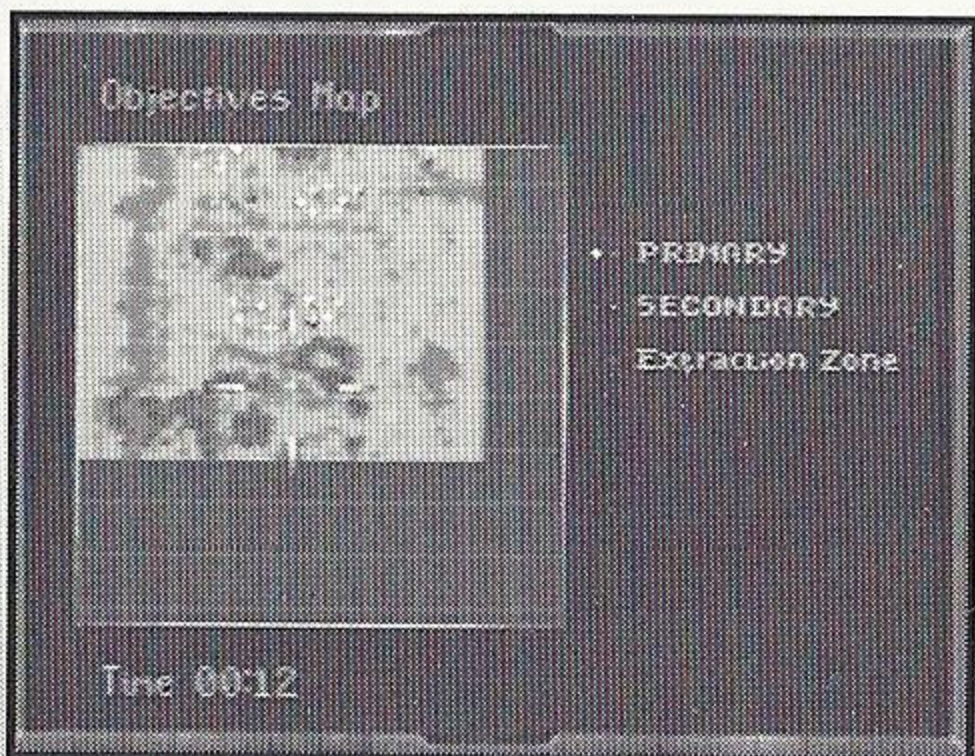
## WEAPON VIEW

This box gives you a graphical representation of the weapon you currently have selected.

## AMMUNITION

This counter indicates the amount of ammunition available for the weapon which is currently selected.

**Note:** When using Button A and Button B to move between weapons, you will not be able to select weapons which currently contain no ammo.



## RADAR DISPLAY

The radar display indicates your present location and depicts the surrounding terrain. Potential targets are represented by white dots. The radar screen can be toggled on or off using Button X.

## MAP SCREEN

At any time during your mission, you can uplink to the defense net to recall the mission objectives and to download a map of the mission area. Press Y once and a screen will appear with the status of your Primary, Secondary, and Bonus Objectives. Press Y again and a map screen will appear outlining the locations of the remaining Primary and Secondary objectives. Use the D-Pad to scroll the map around the screen. Once all your objectives have been completed, the level exit marker will also be indicated on this screen. Press Y a third time to return to action.

# WEAPON SYSTEMS

All tanks which you command carry the same weapons payload. However, only ammunition for the 100mm Cannon and the Chain Gun is available at the start of your mission. You must blast open enemy bunkers and storehouses to find crates containing ammunition for the remaining weapons. To collect an ammo crate, roll over it with your tank. The contents of the crate will appear in the upper left-hand corner of the screen. The list of weapon systems is as follows:

**Weapon 1:**                    **100mm Cannon**

**H.U.D Description:**      **Shells**

This is your basic weapon of destruction -- Your cannon will never run out of shells.

**Weapon 2:**                    **Hi-Explosive Shells**

**H.U.D Description:**      **Hi-Ex**

These shells explode on contact generating greater damage. These are your best bet for knocking out those pesky bunkers in a hurry.

**Weapon 3:**                    **Mines**

**H.U.D Description:**      **Mines**

Dropped from the rear of the tank, these mines explode after a predetermined period of time. Try setting a few mines to even the score when being chased by enemy tanks.

**Weapon 4:**                    **Mortars**

**H.U.D Description:**      **Mortar**

These explosives can be launched at three different trajectories depending on how long the fire button is depressed. Mortars are the only weapon able to take out enemy targets behind a fence.

**Weapon 5:**                    **Torus Bombs**

**H.U.D Description:**      **Vortex**

This weapon surrounds the tank with a ring of powerful explosions. When surrounded by the enemy, let loose with a Torus Bomb to even the odds. Torus Bombs are very powerful, but short range weapon.

**Weapon 6:** **Flame Thrower**

**H.U.D Description:** **Flame**

This is the absolute best weapon for taking out those annoying foot soldiers.

**Weapon 7:** **Guided Missiles**

**H.U.D Description:** **Missile**

One of two weapons in your arsenal capable of taking down a helicopter.

**Weapon 8:** **Chain Gun**

**H.U.D Description:** **Chain Gun**

This weapon can be used to tear apart enemy infantry or against helicopters. Your chain gun will never run out of rounds.

Hint: Visible aircrafts i.e., Helicopters, can be destroyed - shadow casting airplanes CANNOT.

## SAVING

Provided you have space, Mass Destruction will automatically save your progress to the Sega Saturn's™ internal memory as you complete missions. Each level you complete will overwrite that Commander's previous saved game.

Note: If you have multiple saved game slots for different commanders, one Commander's saved game will not overwrite the next (i.e., Commander A's slot will not overwrite Commander B's).

If you wish to save your progress using the Sega Saturn Memory Cartridge™, insert the cartridge before turning on your Sega Saturn™. After the opening cinema, you will be asked if you wish to save your progress using the Saturn's internal memory, or the Sega Saturn Memory Cartridge™. At this point you can select the Memory Cartridge.

Note: Do not remove the Memory Cartridge until you turn off your Sega Saturn™ System.

## LOADING A SAVED GAME

If you have previously played and completed missions in Mass Destruction, the option "Load Game" will become available on the title screen. Once selected, a screen displaying a list of the Commander's name(s) will appear. Select the commander you wish to restore, and press the C button.

Note: If you have saved your game(s) on the Sega Saturn Memory Cartridge™, you will have to insert your cartridge before turning on your Sega Saturn™ to be able to load your game(s) from the Memory Cartridge.

## PAUSE MENU

Press START during the game to pause the game and bring up the Pause menu. The Pause menu contains the following choices:

<b>SFX</b>	Turns the Sound Effects On or Off.
<b>Music</b>	Turns the Music On or Off.
<b>Volume</b>	Adjust the Volume of the Music.
<b>Track</b>	Selects the Audio Track.
<b>Quit</b>	Quits the game and returns to the Main menu.

Use the D-Pad to highlight the items you wish to modify and then press the D-Pad left or right to make a change. Once you have made all your changes, press START to return to the game.

# MASS DESTRUCTION NOTES





# WARRANTY

## Limited 90 Day Warranty

ASC Games warrants to the original purchaser of this software product, for a period of ninety (90) days following the date of original retail purchase, that the video program is free from substantial errors or defects that will materially interfere with the operation of the program as described in the enclosed user documentation. If this software product fails within ninety (90) days of the date of original retail purchase for any reason other than normal wear and tear, abuse, unreasonable use, mistreatment or neglect, please return the defective product to the point of purchase accompanied by proof of purchase, a dated cash register receipt, your name, your return address, and a statement of defect, or send the software product together with the proof of purchase described above to: ASC Games, 9 Old Kings Highway South, Suite 301, Darien, Connecticut 06820. ASC Games or its authorized dealer will, at our option, replace the product and send it to you (postage prepaid) or issue to you a credit equal to the purchase price.

This warranty applies to the original purchaser of the system product (and does not apply to subsequent purchases of used products) only and states the sole and exclusive remedy for any breach of warranty with respect to this software product. This warranty gives you specific, legal rights, and you may also have rights which vary from state to state.

## Limitations on Warranty

No advertising, description, claims, or representations, whether made by an ASC Games dealer, distributor, agent, or employee, shall be binding upon or obligate ASC Games or shall change the terms of this warranty. Except as stated above, ASC Games makes no other warranty, express or implied, regarding this product. ASC Games disclaims any warranty that the software is fit for a particular purpose, and any implied warranty of merchantability shall be limited to ninety (90) day duration of this limited express warranty and is otherwise expressly and specifically disclaimed. Some states do not allow exclusions or limitations as to how long an implied warranty lasts, so the above limitation may not apply to you.

ASC Games will not be liable for special, incidental, consequential, or other damages, even if ASC Games is advised of or aware of the possibility of such damages. This means that ASC Games will not be responsible or liable for lost profits or revenues, or for damages, of costs incurred as a result of loss of time, data, or use of this software, or from any other cause except the actual cost of the product. In no event shall ASC Games' liability exceed the purchase price of this product. Some states do not allow the exclusion or limitation of the incidental or consequential damages, so the above limitation or exclusion may not apply to you.

## Notice

ASC Games reserves the right to make improvements in the product described in this manual at any time and without notice. This manual and the software described in this manual are copyrighted. All rights are reserved. You are entitled to use this software product for your own use. No part of this manual or the software may be copied, reproduced, translated, or reduced to any electronic medium or machine readable form without the prior written consent of ASC Games, 9 Old Kings Highway South, Suite 301, Darien, CT 06820, Attn: ASC Games Management.

Mass Destruction™ is a trademark of BMG Interactive International, a unit of BMG Entertainment. ©1997 NMS Software, Ltd. ASC Games™ is a trademark of American Softworks Corporation. ©1997 American Softworks Corporation. Mass Destruction™ is developed by NMS Software, Ltd. The NMS logo is used under license from BMG. BMG™ is a trademark of BMG Music. All rights reserved.

# MASS DESTRUCTION™

**So You Still Want More?**

- Game hints and tips
- We'll add in free downloadable demos...
- Okay, we'll throw in contests and free giveaways...
- If that's not enough, how about never-before-seen previews of upcoming ASC Games titles...well?
- And the hottest links to all of your favorite gaming sites.

**Consumer Product Information, Call 203-655-0032**

**<http://www.ascgames.com>**



Sega and Sega Saturn are trademarks of SEGA ENTERPRISES, LTD. Mass Destruction™ is a trademark of BMG Interactive International, a unit of BMG Entertainment. ©1997 NMS Software, Ltd. ASC Games™ is a trademark of American Softworks Corporation. ©1997 American Softworks Corporation. Mass Destruction™ is developed by NMS Software, Ltd. The NMS logo is used under license from BMG. BMG™ is a trademark of BMG Music. All rights reserved. This game is licensed by Sega for home play on the Sega Saturn system only. Copying and/or transmission of this game is strictly prohibited. Unauthorized rental or public performance of this game is a violation of applicable laws. All rights reserved. WARNING: Operates only with NTSC televisions and Sega Saturn systems purchased in North and South America (except Argentina, Paraguay and Uruguay). Will not operate with any other televisions or Sega Saturn systems. Made and printed in the U.S.A.

Sega is registered in the U.S. Patent and Trademark Office. Sega Saturn is a trademark of SEGA. This game is licensed by Sega for home play on the Sega Saturn system only. Copying and/or transmission of this game is strictly prohibited. Unauthorized rental or public performance of this game is a violation of applicable laws. ©1997 SEGA, P.O. Box 8097, Redwood City, CA 94063. Made in Japan and printed in the U.S.A. All rights reserved.