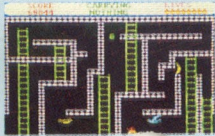
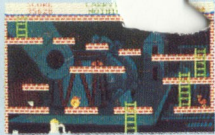




CHUCKIE EGG II™

This eggcellent game is guaranteed to be salmonella free on your machines. It will give hours of entertainment and no matter how many times you unwrap the cassette and sample the goodies it will neither make you fat nor rot your teeth!



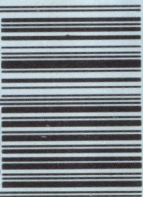
Screen shots from Amiga version

PICK & CHOOSE (F.G.) LTD.

245, BURY NEW ROAD, MANCHESTER M8 8DY

☎ 061 792 8093 Fax 061 792 8102

5 018647 000104



CHUCKIE EGG II

COMMODORE CM64/128



CHUCKIE EGG II



COMMODORE CM64/128

Our intrepid hero "Hen House Harry" of "Chuckie Egg" fame, has been called in to help a "Chocolate Egg" manufacturer sort out his automated factory, which has gone haywire. Harry using all the skills he acquired working in the Hen House must get the wheels of industry moving.

Not only does Harry have to collect the ingredients to mix the eggs, but he will also have to collect the parts for the toys that go inside the eggs. As if all these problems were not enough there are a number of other items that Harry will need to find and use to be able to complete the task, things like ladders, bits of girders, keys and many more.

Chuckie Egg II contains 120 screens, plenty of surprises, and is a true Arcade/Adventure game - you don't just find things, you actually move them and use them!

CONTROLS

Select your own keys or joysticks.

INSTRUCTIONS

Full instructions are included in the program

LOADING

Press **SHIFT** and **RUN/STOP** keys to load program.

COPYRIGHT
PICK & CHOOSE (F.G.) LTD 1988
UNAUTHORISED COPYING,
RESELLING, HIRING, LENDING,
PUBLIC PERFORMANCE AND
BROADCASTING IS PROHIBITED.

SOLD SUBJECT TO
PICK & CHOOSE (F.G.) LTD
FULL TERMS &
CONDITIONS AVAILABLE
FROM THE OFFICES
ON REQUEST.