

Check out these Great Titles
from EIDOS Interactive!

**TOMB
RAIDER**
ADVENTURES OF
LARA CROFT
III



**FIGHTING
FORCE**



651 Brannan St. 4th floor
San Francisco, CA 94107
www.eidosinteractive.com



EIDOS
INTERACTIVE

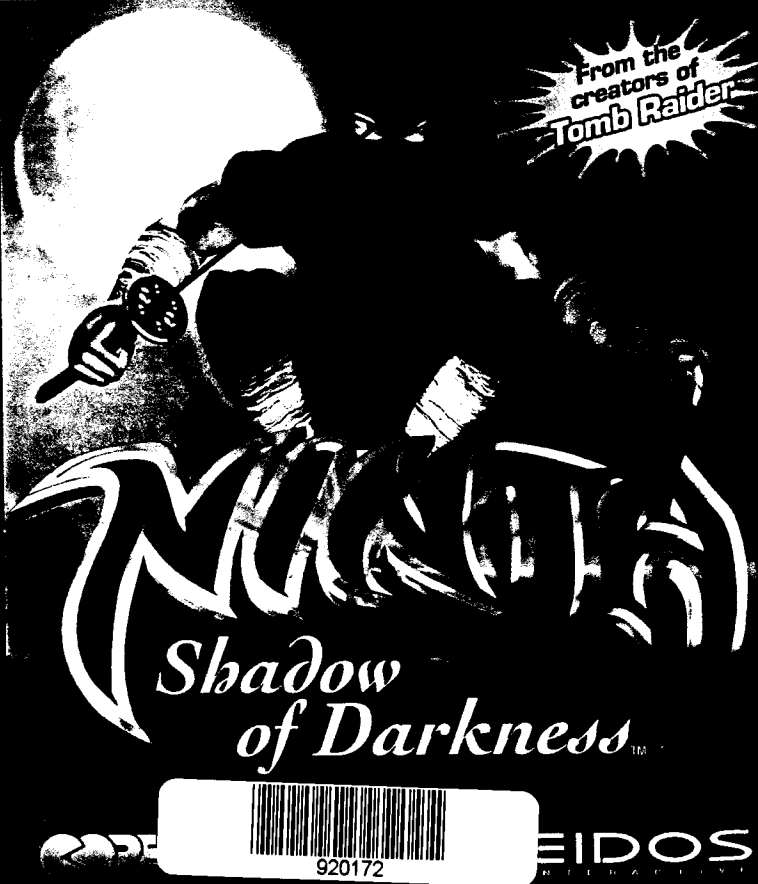


NTSC U/C

PlayStation®



SLUS-00435



From the
creators of
Tomb Raider

*Shadow
of Darkness*



920172

EIDOS
INTERACTIVE

TABLE OF CONTENTS

WARNING: READ BEFORE USING YOUR PLAYSTATION® GAME CONSOLE:

A very small percentage of individuals may experience epileptic seizures when exposed to certain light patterns or flashing lights. Exposure to certain patterns or backgrounds on a television screen or while playing video games, including games played on the PlayStation game console, may induce an epileptic seizure in these individuals. Certain conditions may induce previously undetected epileptic symptoms even in persons who have no history of prior seizures or epilepsy. If you, or anyone in your family, has an epileptic condition, consult your physician prior to playing. If you experience any of the following symptoms while playing a video game – dizziness, altered vision, eye or muscle twitches, loss of awareness, disorientation, any involuntary movement, or convulsions – IMMEDIATELY discontinue use and consult your physician before resuming play.

WARNING TO OWNERS OF PROJECTION TELEVISIONS:

Do not connect your PlayStation game console to a projection TV without first consulting the user manual for your projection TV, unless it is of the LCD type. Otherwise, it may permanently damage your TV screen.

HANDLING YOUR PLAYSTATION® DISC:

- This compact disc is for use only with the PlayStation® game console.
- Do not bend it, crush it, or submerge it in liquids.
- Do not leave it in direct sunlight or near a radiator or other source of heat.
- Be sure to take an occasional rest break during extended play.
- Keep this compact disc clean. Always hold the disc by the edges and keep it in its protective case when not in use. Clean the disc with a lint-free, soft, dry cloth, wiping in straight lines from center to outer edge. Never use solvents or abrasive cleaners.

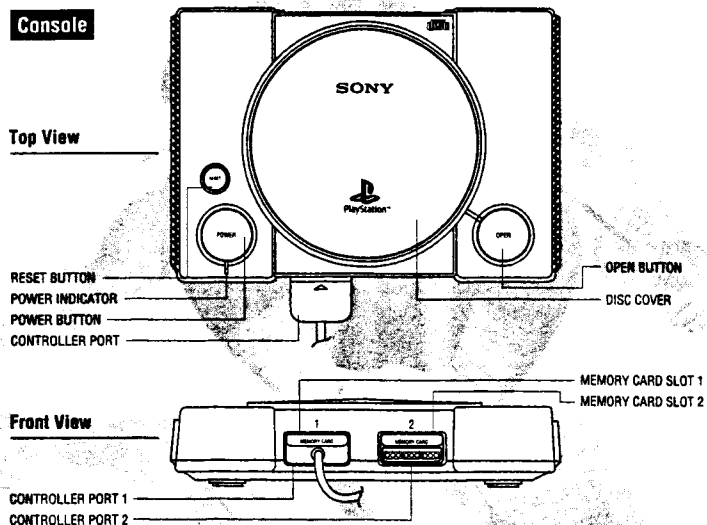
PlayStation® Setup	2
PlayStation® Controls	3
Storyline	4
In-Game Controls	5
Menu Controls	6
Starting the Game	6
Main Menu	6
Options Menu	7
Screen Adjust	7
Controls	7
In-Game	8
Pause Menu	8
Screen Display	9
The Shop (including Save Game Instructions)	10
Continues	10
In-Game Pickups	11
Hints and Tips	13
Credits	14

PLAYSTATION SETUP

To load and run Ninja: Shadow of Darkness on your PlayStation® game console, follow these simple instructions.

Set up your PlayStation® game console according to the instructions in its Instruction Manual. Make sure the power is off before inserting or removing a compact disc. Insert the Ninja: Shadow of Darkness disc and close the disc cover. Insert game controllers and turn on the PlayStation® game console. Follow on-screen instructions to start a game.

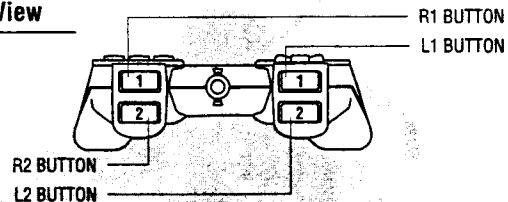
Console



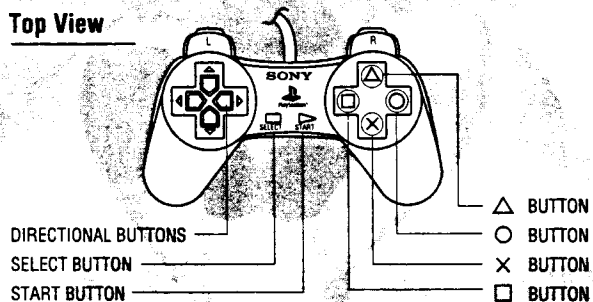
PLAYSTATION CONTROLS

Controller

Front View



Top View



STORYLINE

Ancient Japan had been split into two distinct regions; each controlled by a powerful warlord. Both of these men were desperate to gain control of the other's lands - and therefore become Emperor of all Japan.

Years of war finally resulted in an uneasy truce where both sides remained distrustful of one another. One of the warlords, Katasaki, finally decided to take matters into his own hands. He called upon the powerful demon lord, Batanaka, and in an evil ceremony, he sold his soul in exchange for the demon's help.

Batanaka kept his side of the bargain and sent Katasaki an army of goblins, trolls, dragons and other evil beasts. Katasaki immediately sent the demon hordes on a rampage across his enemy's land; and when they had finished, Katasaki would be able to simply take over and become emperor.

The plan came to pass but Katasaki was unable to control the wicked demons and witnessed the total decimation of Japan. The people became possessed and the dead walked freely with the living.

Years later, after a soul-searching journey, a young Ninja named Kurosawa returns to his homeland. Discovering the horrors caused by the demon, the Ninja vows to save his people from the evil grip which has befallen them...and so begins his quest to rid the land of the demon legions.

IN-GAME CONTROLS (DEFAULTS)

Directional buttons

Use the Directional buttons to move your character around the screen.

- ⊗ ButtonJump
- △ ButtonThrow Daggers
(you have an unlimited supply)
- ButtonPunch (or use weapon if you have one)
- ButtonKick
- x3Punch combination when close to
an enemy
- x3Kick combination when close to
an enemy
- L1Block
- L2Throw Bomb
- R1Walk
(in conjunction with
the Directional buttons)
- R2Release Magic Potion
- x2, then
□ + Left Directional buttonBack Punch
- x2, then
○ + Left Directional buttonBack Kick Flip

Each weapon has a special move associated with it. To perform the move, hold down the □ Button until your weapon begins to glow then release the button to attack. Use sparingly though as these moves deplete your energy.

MENU CONTROLS

Throughout all menus, please use the Directional buttons to navigate. All menus are accompanied with on-screen prompts.

STARTING THE GAME

It is advised that you do not insert or remove peripherals or Memory cards once the power has been switched on.

You will be presented with the Eidos / Core introduction, followed by a brief game introduction before being taken to the Title Screen. Pressing the START button will access the Main Menu.

MAIN MENU

Start Game

Select to commence gameplay.

Load Game

Select to check the Memory Card slot and the presence of a valid Ninja saved game. Having no card or valid saved game will return you to the Main Menu. The presence of a Ninja saved game will activate an option to load, selecting Yes will commence gameplay.

Options

Select to be taken to the Options Menu.



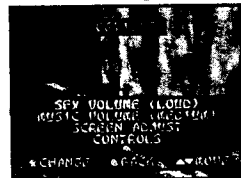
OPTIONS MENU

SFX Volume

Select between the following settings: Quiet / Medium / Loud (Default)

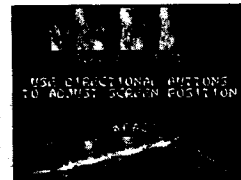
Music Volume

Select between the following settings: Quiet / Medium / Loud (Default)



SCREEN ADJUST

Select and you will be presented with the Screen Adjust screen. Use the Directional buttons to position the viewable area as desired, press ⊗ to apply and return to the Main Menu.

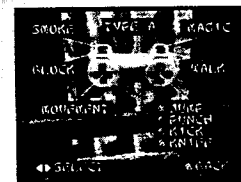


CONTROLS

Use the Right and Left Directional buttons to scroll through the various pre-configured control methods, press ⊗ to apply and return to the Main Menu.

Press ⊙ at the completion of your options selections to apply and return to the Main Menu page.

Please note, your options are saved within your save game files.



IN - GAME

While in-game, pressing the START button will pause the game and bring up the Pause Menu.

PAUSE MENU

Return to Game

Press (X) to return to the game.

SFX Volume

Use Right and Left Directional buttons to scroll through settings.

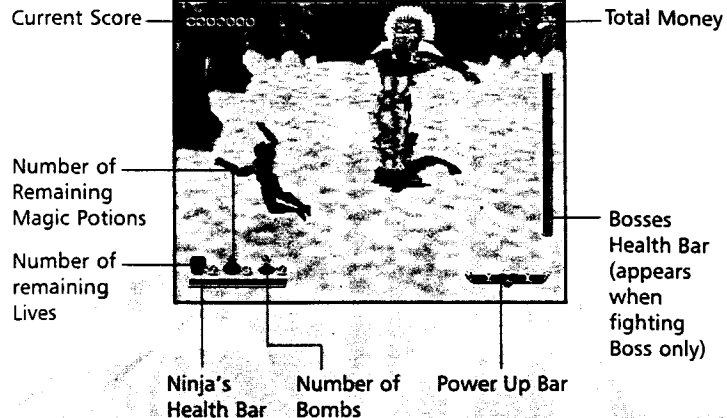
Music Volume

Use Right and Left Directional buttons to scroll through settings.

Quit Game

Select this option to be presented with a confirmation request, select YES to quit the game and return to the Main Menu, select NO to return to the game.

SCREEN DISPLAY



THE SHOP (INCLUDING SAVE GAME INSTRUCTIONS)

At the conclusion of each level, you are taken to The Shop. From here you are able to purchase items that will aid you on your adventure. To find out the price of an item, use the Left and Right Directional buttons to highlight an available item. Pressing **X** will display the price, and if you have sufficient funds, an option to buy will be presented to you.

It is here that you are also given the opportunity to save your current game. Highlight and select the Memory Card icon, the on-screen prompts will guide you through the Save process.

To leave the shop, highlight and select the Exit icon. You will then be taken back to the game.

CONTINUES

You are given 3 continues at the start of your game. When you have died, pressing **START** before the counter reaches 0 will put you back in-game at your last restart point.

Once you have used all 3 continues or choose to allow the time to expire, you will be taken back to the Main Menu.

IN-GAME PICKUPS

Extra Life Icon

Collect this Icon and be rewarded with an extra life. Extra lives are also awarded at increments of 250,000 points.



Magic Potions

Increase your powers by collecting magic potions – be careful though, not all potions are good for you!

Power Up Scroll

Increases your Power level, therefore making your kicks, punches, weapons and bombs even more effective.

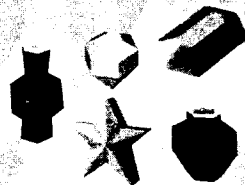


Food

Keep your Health Bar as full as possible, when it runs out you die!

Points Increase

Collect these icons to boost your score and make it onto the high score table.





Smoke Bombs

Use these to take out enemies in close range.

Invincibility

Will render your NINJA invincible for a short while.



Mystery Items

Pick these up in game or try buying them in the shop. Who knows what you may get?

Your Ninja can only accumulate 9 lives and hold onto 9 Magic Potions and Smoke Bombs. Don't try to buy more of these items in the store as the shopkeeper will take your money!

Be careful when opening the chests – all may not be what it seems!

Collect as many coins as you can – there are many items on sale in the shop!

Throwing daggers into places where nothing apparently exists may give you hidden bonuses.

Can't find a key? Something blocking your path? In some areas you'll need to defeat all the enemies in a particular area in order to alter the map or reveal a hidden key.

Stuck at a dead-end? Try throwing daggers at your surroundings. They sometimes open up new doorways.

EIDOS HINT LINE

1-900-773-4367

Cost of Call \$0.95/minute. Must be 18 years or have Parent's permission. Touch-Tone Phone required.