

**AN ANCIENT CURSE.
A FATAL MISTAKE.
AND THE ONLY WAY TO REVERSE IT
IS TO CONTROL TIME ITSELF.**

November 2003. Pray for mercy.

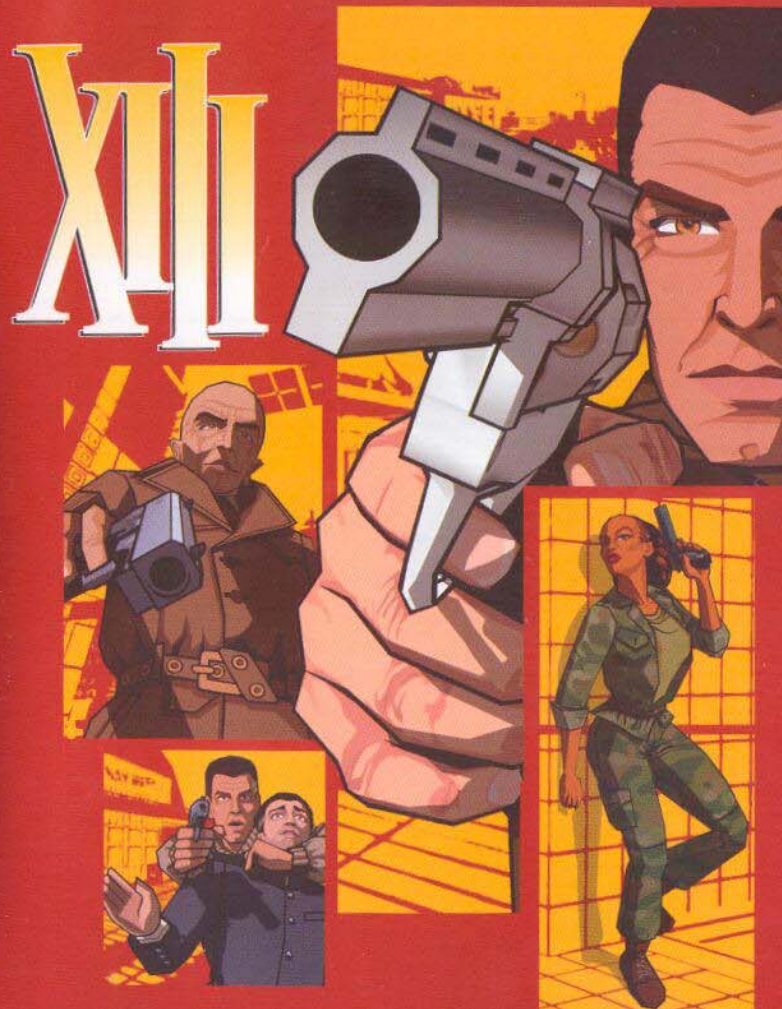


DARGAUD

UBISOFT

SLES-51244

PlayStation, PS2, DARGAUD, and "DUALSHOCK" are registered trademarks of Sony Computer Entertainment Inc. All Rights Reserved.



manual



DARGAUD

UBISOFT

www.XIII-thegame.com

Precautions

• This disc contains software for the PlayStation®2 computer entertainment system. Never use this disc on any other system, as it could damage it. • This disc conforms to PlayStation®2 specifications for the PAL market only. It cannot be used on other specification versions of PlayStation®2. • Read the PlayStation®2 Instruction Manual carefully to ensure correct usage. • When inserting this disc in the PlayStation®2 always place it with the required playback side facing down. • When handling the disc, do not touch the surface. Hold it by the edge. • Keep the disc clean and free of scratches. Should the surface become dirty, wipe it gently with a soft dry cloth. • Do not leave the disc near heat sources or in direct sunlight or excessive moisture. • Do not use an irregularly shaped disc, a cracked or warped disc, or one that has been repaired with adhesives, as it could lead to malfunction.

Health Warning

For your health, be sure to take a break of about 15 minutes during every hour of play. Avoid playing when tired or suffering from lack of sleep. Always play in a well-lit room, sitting as far from the screen as the cord will allow. Some people experience epileptic seizures when viewing flashing lights or patterns in our daily environment. These people may experience seizures while watching TV pictures or playing video games. Even players who have never had any seizures may nonetheless have an undetected epileptic condition. Consult your doctor before playing video games if you have an epileptic condition or immediately should you experience any of the following symptoms during play: dizziness, altered vision, muscle twitching, other involuntary movements, loss of awareness of your surroundings, mental confusion, and / or convulsions.

PIRACY

The unauthorised reproduction of all or any game part of this product and the unauthorised use of registered trademarks are likely to constitute a criminal offence. PIRACY harms Consumers as well as legitimate Developers, Publishers and Retailers. If you suspect this game product is an unauthorised copy, or have any other information about pirate product, please call your local Customer Service number given at the back of this Manual.

See back page of this manual for Customer Service Numbers.

Contents





- Using the PS2 Video Game System	2
- Using the PS2 Controller	2
- Setting up for online play	3
- Game Controls	4
- Introduction	4
- Main Characters in the Game	5
- Main Menu	5
- The Game	8
• HUD (Head-Up Display)	8
• Game Menu	9
• Game Weapons	10
• Files on XIII	11
• The Objects	11
- Multi-Player Mode	12
• Split-Screen Game	12
• Multi-Player Game Modes	12
• Online Game	13
- Customer Service and Warranty	15

SLES-51244

1 or 2 Player • Memory Card (8MB) (for PlayStation®2): 89 KB minimum • Analog Control Compatible: analog stick only • Vibration Function Compatible
Network Adaptor (Ethernet) (for PlayStation®2) compatible: 2-6 Players

© 2003 Ubi Soft Entertainment. All Rights Reserved. Ubisoft and the Ubisoft logo are trademarks of Ubi Soft Entertainment in the US and/or other countries.
© 2003 Van Hanne - Vance / Dargaud Benelux (Dargaud - Lombard S.A.)
Library programs © 1997-2003 Sony Computer Entertainment Inc. exclusively licensed to Sony Computer Entertainment Europe. FOR HOME USE ONLY. Unauthorised copying, adaptation, rental, lending, distribution, extraction, re-sale, arcade use, charging for use, broadcast, public performance and internet, cable or any telecommunications transmission, access or use of this product or any trademark or copyright work that forms part of this product are prohibited.

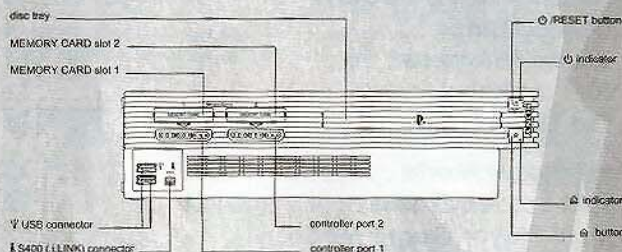
Using the PS2 Video Game System

1. Set up your PlayStation®2 computer entertainment system according to the instructions in its instruction manual. Attach game controllers and other accessories, as appropriate.
2. Make sure the MAIN POWER switch (located at the back of the console) is turned ON.
3. Press the /RESET button. When the  indicator is green, press the  button. The disc tray opens.
4. Place the XIII disc on the disc tray with the label side facing up. Press the  button again and the disc tray closes.
5. Follow on-screen instructions and refer to this manual for information on using the software.

It is advised that you do not insert or remove accessories once the power is on. Make sure there is enough free space on your memory card (8MB) (for PlayStation®2) before commencing play. This title supports MEMORY CARD slot 1.

Game data will be auto loaded on boot up providing that a Memory Card (8MB) (for PlayStation®2) is inserted in MEMORY CARD slot 1 containing previously saved XIII game data.

PlayStation®2 [front panel]



Troubleshooting

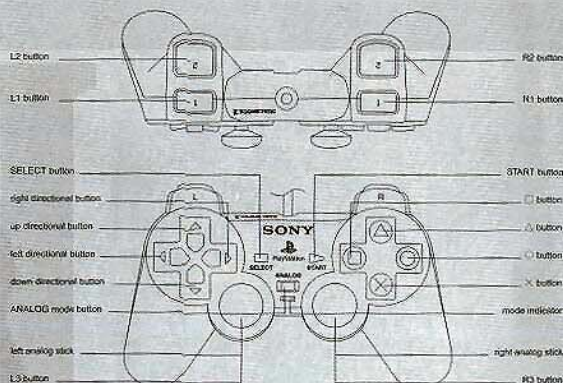
If a connection to the network cannot be established

- The main power plug for the console is not fully inserted into the mains power socket. Check that the main power plug is fully inserted into the mains power socket
- The Network Adaptor (Ethernet) (for PlayStation®2) is not properly installed in the console. Check that the Network adaptor is properly installed in the console
- The network is busy: Wait a few minutes, then try to access the network again
- Check that the network cable is properly connected

Using the PS2 Controller

XIII does not support a digital controller.

Analog Controller (DUALSHOCK®2)



Setting up for online play (Optional)

Set up your PlayStation®2 computer entertainment system to connect over the internet.

XIII Online functions only through a broadband (DSL or Cable modem) connection.

Network Adaptor (Ethernet) (for PlayStation®2)

Install the Network Adaptor (Ethernet) (for PlayStation®2) into your console according to the instructions in its instruction manual.

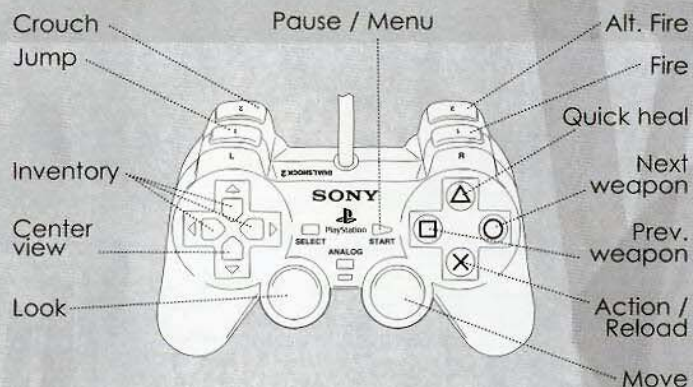
A memory card (8MB) (for PlayStation®2) with a valid Network Configuration is required to play online.

Caution: Unplug the AC power cord on your console before adding any networking equipment to the system

To create, edit or delete Your Network Configuration Files please use the Network Access Disk.

A Network Adaptor (Ethernet) (for PlayStation®2) is required to play online. Install the Network Adaptor (Ethernet) (for PlayStation®2) into your console according to the instructions in its instruction manual

Game Controls



Introduction

The United States.

The country's still in a state of shock after President Sheridan's assassination.

You wake up, amnesiac and wounded, on a deserted East Coast beach. The only clues to your identity are the number XIII tattooed near your collarbone and the key to a safety-deposit box.

Though your memory has let you down, you find you have the reflexes of a highly-trained professional combatant.

You set off in search of your past, discovering the part you played in the killing of the President of the United States and tracing the biggest conspiracy ever known in the history of the country back to its source.

Main Characters

- **General Carrington.** He seems to know a lot about your past. He's convinced you're innocent, and he'll do anything he can to help you find the truth.
- **Jones.** Carrington's aide-de-camp. Above all, she's a highly trained soldier who watches over you when the going gets really tough.
- **Amos.** A high-ranking FBI man, Amos is in charge of investigating the plot behind President Sheridan's assassination.
- **The Mongoose.** A ruthless killer, he hunts down XIII for the Conspiracy. Until his contract is fulfilled, nothing will stand in his way.
- **Number 1.** He conducts the Conspiracy that assassinated President Sheridan from the shadows. Will you be able to foil his evil plans?

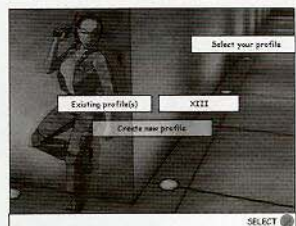
Main Menu

Language Menu



Select your language and Press **Enter** to validate

Profile Selection Screen



Choose "New Profile" to create a new profile. Your profile contains all the information about your previous games: saved games in Solo Mode, character profile for Multi-Player Mode and for online. If you already have a profile,

select the profile you want, then press **X** to validate. Select "play with default profile" to start a game without creating a profile.

Main Screen

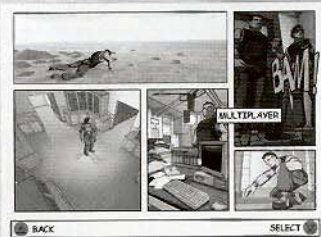
Continue: to continue the latest game in progress

New game: to create a new XIII game

Load a game: to load a particular saved game

Multi-players: to access the XIII Multi-Player Mode

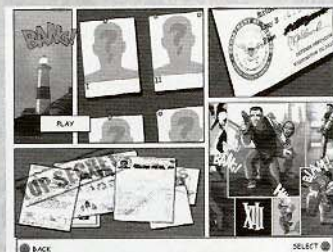
Options: to access the game options



Continue Screen

Play: To restart the latest saved game. You begin again at the start of the last map played.

Story: This option displays a summary of the missions already accomplished and



the key points of the adventure.

Skills: Select this option to see the skills acquired by XIII in the course of his adventures.

Documents: Select this option to view all the important documents that XIII has found.

The Conspiracy: This screen shows the members of the Conspiracy that you've already unmasked.



Load a game: Select the saved game you want, and press **X** to load the game.

Options Menu

Parental Lock: Activate this option to remove the violent graphic effects in the game.

Audio Menu: Choose this option to adjust the audio settings for XIII.

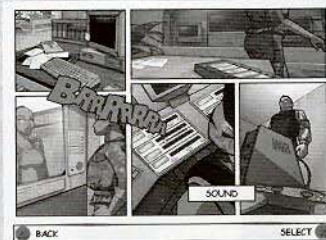
MusicMenu: To activate or deactivate the music
Mode: To activate or deactivate stereo mode.

Video Menu: Choose this option to adjust all the video settings for XIII.

Horizontal/Vertical Centring: Use the cursors to centre the game image on your screen.

Controls Menu: Select this option to choose between the different configurations for your controller.

Advanced Options: To access advanced control functions.



Vibration: Choose On/Off to activate or deactivate vibration on the controller.

Auto-aim: to deactivate the auto-aim in the game.

Invert Look: Choose "Yes" to invert the view horizontally.

View speed: choose the speed of your controller.

Difficulty Menu: To set the difficulty level of the game.

Arcade: easy game mode.

Normal: normal game mode.

Realistic: difficult game mode.

The Game

Now you're ready to begin XIII's adventure!

HUD (Head-Up Display)

HUD provides the player with essential information: health level, armour and ammunition points for the currently used weapon.



When XIII's health level reaches zero, he dies.

Throughout the game, you can pick up Medkits to regain life. You'll also find bullet-proof jackets and helmets to increase your "armour".

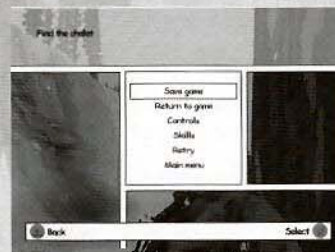
In the course of the game, you'll come up against many enemies who will try to eliminate you. To help you out, a red arrow on-screen indicates the source of enemy fire.



Sometimes images in pop-up windows appear to warn you of an impending danger.

XIII has a sixth sense and can smell danger a few seconds before it confronts him: a signal in the bottom left of the screen activates

when an enemy approaches. Furthermore, you can hear the footsteps of enemies who are close by.



Game Menu

During the game, press the start button to access the menu.

Save game: Select this option to save your current game. Please note: this save allows you to start at

the beginning of the level you were on when you saved. A checkpoint in the middle of the longest missions enables you to go back to this point if you die in the second part of the mission.

Return to game: To return to the current game.

Controls: Select this option to access the Game Controls screen.

Skills: Select this option to view the different skills that XIII possesses and a description of how they are used.

Retry: Select "Restart Level" to replay the current level from the beginning.

Main Menu: To quit the current game and go back to the Main Menu.

XIII's Weapons

XIII has a formidable arsenal. Each weapon can be used normally or in alternating fire mode.



Knife: Highly effective in hand-to-hand combat and at short range. Much less precise when used from a distance.



9 mm Pistol: The most frequently encountered handgun in the game. It can sometimes be fitted with a silencer for infiltration missions.



Grenade: An ultra-powerful weapon. Use with care, otherwise you'll blow yourself up!



.44 Special: A very powerful gun. It can prove highly effective at short and medium range.



Shotgun and Pump-Action Shotgun:

Shotguns for close combat. They are powerful weapons, but this advantage is offset by their fairly low rate of fire.



Harpoon Launcher: Though intended for underwater combat, this weapon is also highly effective on the ground.



Simple Crossbows: There are 2 models of these silent weapons, with 1 bolt and 3 bolts in the clip. They're ideal for eliminating soldiers on guard duty at long range.



Mini Gun: A handheld submachine gun. This arm is extremely effective in close combat, but watch out for the recoil when shooting in bursts!



Kalash: The favourite weapon of the mercenaries employed by the Conspiracy. It's equally effective over short and medium range.



Assault Rifle: As deadly as its twin, the Kalash. What's more, this assault rifle is fitted with a grenade-launching tube which can wreak havoc in enclosed spaces.



SMG (Sub-Machine Gun): A heavy sub-machine gun. This is one of the most powerful weapons in the game. The big drawback is its excessive weight, which slows XIII down when he's using it.



Bazooka: Unquestionably the most powerful weapon in the game. It can kill large numbers of enemies with a single shot. Take care not to fire at too close range, if you don't want to injure yourself.



Sniper Rifle: With its very long range and firepower, the Sniper Rifle has no cause to be jealous of assault rifles. It is very useful for eliminating enemies lying in ambush or very far away.

Files on XIII

There are a lot of files about XIII's past to be found along the way in the game. When you find them, you'll earn new skills – like, for example, how best to use the Medkits.

Objects



Medkit: Enables you to pick up 25 or 50 health points (if you have acquired the "medical care" skill).



Full Medkit: Enables you to pick up 50 or 100 health points (if you have acquired the "medical care" skill).



Key: Each key corresponds to a particular door. You'll find a lot of keys on the guards.



Lockpick: An essential tool for picking even the most stubborn locks.



Magnetic Pass: The best-protected buildings use this highly sophisticated security system.



Grapnel: Both indoors and outdoors, the grapnel will help you get into the most hard-to-reach corners of the game.

Multiplayer Mode

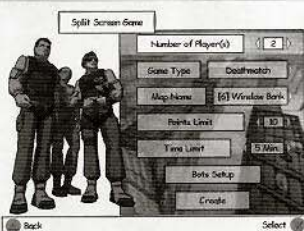
This section provides all the information you need to enjoy XIII's multi-player modes to the full.



Multiplayer Profile: to define your name and other specifications like your skin

Split-Screen: In Split-Screen Mode, up to 2 players can play on a single console. Choose the Split-Screen Game option.

The controller selection screen then appears.



When you create a multi-player game, you must adjust the settings.

The Game Rules option lets you choose the type of game, the number of players and the other game settings.

Multiplayer Game Modes

- **Deathmatch:** Kill as many enemies as possible within a time limit, or be the first to reach the kill-total selected at the start.
- **Team Deathmatch:** Like in classic deathmatch, but plays in teams. Kill as many enemies as possible within a time limit, or reach the kill total. Your own kill-total is added to the one of your teammates.

- **Capturing the Flag:** Each team must take the opposing team's flag and bring it back to their base without losing their own flag.

- **Power Up:** A variant of Deathmatch games. The bonus found depend of the player ranking. Better he is, weaker are the bonuses he can find. Besides all classical bonuses (armour, weapon), a lot of extra bonuses can be found. Bonus like regeneration (you gain life in continue), "one shot-one kill" (you kill opponent just by shooting only one time), invisibility, or lose-life.

- **The hunt:** You and your opponents chase a running target throughout the map. You score points depending on how much damage you do to it but each time you hit that guy, he gets smaller and smaller. So the more he is hurt the more difficult it is to score!. You gain extra point by killing him. But be careful, if you get touched, you die.

Online Game

Choose the "Ubisoft's Online Game Service" option to play with other players online

The game automatically recognises your connection. If you want to change some parameters, just select "change" and press **X**.

Otherwise, select OK to access to the online network. If you don't have a Ubi account, you have to create one. Choose your account and enter your password. A list of available games appears.

You can join a game by selecting it and press **X**.

You can also add filters to choose which type of game you want to play (Capture the flag, deathmatch...) Select "Refresh" to start again the search of available games. Select "Informations" to have details on the selected game.

Create a Match

If you want to start a game, select "Create a Match". But watch out: if you quit a game you have created, all the players will be ejected and the game will stop. You should make certain settings for the game. First of all, set the Game Mode. Then configure the server that you want to set up. If you choose "Public", anyone can join the game. If you choose "Private", only your guests can join the game. Lastly, you should set the maximum number of players for the game.

The communication function of this product includes software developed by the NetBSD Foundation, Inc. and its contributors. For a complete list of contributors please see LIBENET.TXT in the disc.

RSA BSAFE® SSL-C and Crypto-C software from RSA Security Inc. have been installed.

RSA is a registered trademark of RSA Security Inc.

BSAFE is a registered trademark of RSA Security Inc. in the United States and other countries.

RSA Security Inc. All rights reserved.



DNAS logotype is a trademark of Sony Computer Entertainment Inc.

WARRANTY

Ubisoft offers a Technical Support service which details are indicated in the text of the manual relative to Technical Support.

When you (the "User") contact Technical Support, please be as specific as you can be about the problem you are experiencing and have the below details available:

- The name of the manufacturer of your computer system
- The brand and speed of the processor
- How much RAM you have
- The version number of windows you are using (if you aren't sure, right-click on the my computer icon on your desktop and select 'properties')
- The manufacturer name and model number of your video card, modem, and sound card.

Ubisoft guarantees to the original buyer of the multimedia product that the compact disc (CD) supplied with this multimedia product shall not show any fault during a normal-use period of one hundred and eighty (180) days from the invoiced date of purchase, or any other longer warranty time period provided by applicable legislation.

Please return any defective multimedia product by registered letter to: Technical Support together with this manual and your registration card if you have not already sent it to us. Please state your full name and address (including postcode), as well as the date and location of purchase. You may also exchange the multimedia product at the place of purchase.

If a disc is returned without proof of purchase or after the warranty period has expired, Ubisoft will choose either to repair or to replace it at customer expense. This warranty is invalid if the disc has been damaged through negligence, accident or misuse, or if it has been modified after acquisition. The User recognises expressly that he uses the multimedia product at his own risk. The multimedia product is provided as is, without any warranty other than what is laid down above. The User is responsible for any costs of repairing and/or correcting the multimedia product.

To the extent of what is laid down by law, Ubisoft rejects any warranty relating to the market value of the multimedia product, the User's satisfaction or its capacity to perform a specific use.

The User is responsible for all risks connected with lost profit, lost data, errors and lost business or other information as a result of owning or using the multimedia product.

As some legislations do not allow for the aforementioned warranty limitation, it is possible that it does not apply to the User.

OWNERSHIP

The User recognises that all of the rights associated with this multimedia product and its components, its manual and packaging, as well as the rights relating to the trademark, royalties and copyrights, are the property of Ubisoft and Ubisoft's licensors, and are protected by French regulations or other laws, treaties and international agreements concerning intellectual property.

Documentation should not be copied, reproduced, translated or transferred, in whole or in part and in whatever form, without prior written agreement of Ubisoft.