

SEGA

MICHAEL JACKSON'S MOONWALKER™

FIRST THE MOVIE AND
NOW SEGA BRINGS YOU
THE VIDEO GAME . . .
MICHAEL JACKSON'S
MOONWALKER



MICHAEL JACKSON, WORLDWIDE SUPERSTAR, HAS REALISTICALLY REPRODUCED HIS HIT MOVIE "MOONWALKER" THROUGH HIS ACTIVE PARTICIPATION AND CREATIVE INPUT TO BRING YOU "MOONWALKER". . .
THE VIDEO GAME



MICHAEL JACKSON'S
MOONWALKER

**SENSATIONAL MUSIC AND DANCING!
THE WORLD OF MICHAEL JACKSON!**

EXCITING REALISTIC ACTION.
Michael's steps and body actions are realistically reproduced on the screen with 3-D background scenery and high action character movements.

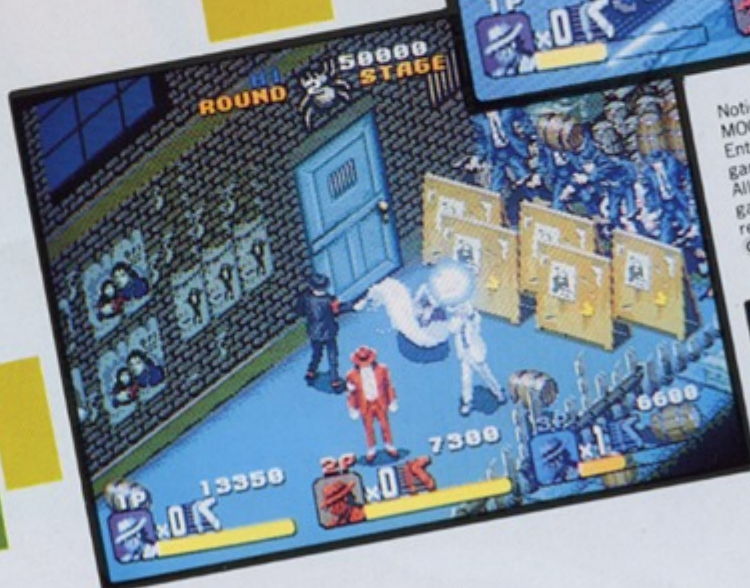
ROBOT TRANSFORMATION AND SPECIAL MAGIC SCENES ARE ALSO INCREDIBLE!

Continuation of the scenes, which are reminiscent of those in the movie "MOONWALKER," such as the DANCE MAGIC in which Michael and the enemies dance together in tune with the music, turning into a ROBOT equipped with powerful weapons; plus many others, will put you right in the middle of this extremely exciting game.

MICHAEL'S HIT SONGS ARE IN ALL OF THE SCENES!

The background music contains many of Michael Jackson's greatest numbers . . .

- "BAD"
- "SMOOTH CRIMINAL"
- "BILLIE JEAN"
- ... AND OTHERS



Notices of Copyright and Trademark: "MICHAEL JACKSON'S MOONWALKER"™ video game program developed by Sega Enterprises, Ltd. "MICHAEL JACKSON'S MOONWALKER"™ video game audio/visual display © 1989 Triumph International, Inc. All rights reserved. "MICHAEL JACKSON'S MOONWALKER"™ video game program codes © 1990 Sega Enterprises, Ltd. All rights reserved. This game is based on the motion picture "Moonwalker" © 1988 Ultimate productions.



SEGA Enterprises, Ltd.
2-12, Haneda 1-chome, Ota-ku, Tokyo 144, Japan
Tel.:(03)743-7438 Fax:(03)743-5539
Tlx.:J22357 SEGASTAR
SEGA Enterprises, Inc. (U.S.A.)
2149 Paragon Dr. P.O. Box. 610550 San Jose, CA 95161-0550
U.S.A. Tel.:(408)435-0201 Fax.:(408)435-0294
SEGA Europe Ltd.
Unit 6, Churchill Court, 58 Station Road,
North Harrow, Middlesex, HA2 7SA, England
Tel.81-863-7737 Tlx.:893501 SEGAUK G
Fax.81-863-5354

DISTRIBUTED BY:

©SEGA 1990.8 OD-3301