

PITFALL™ II

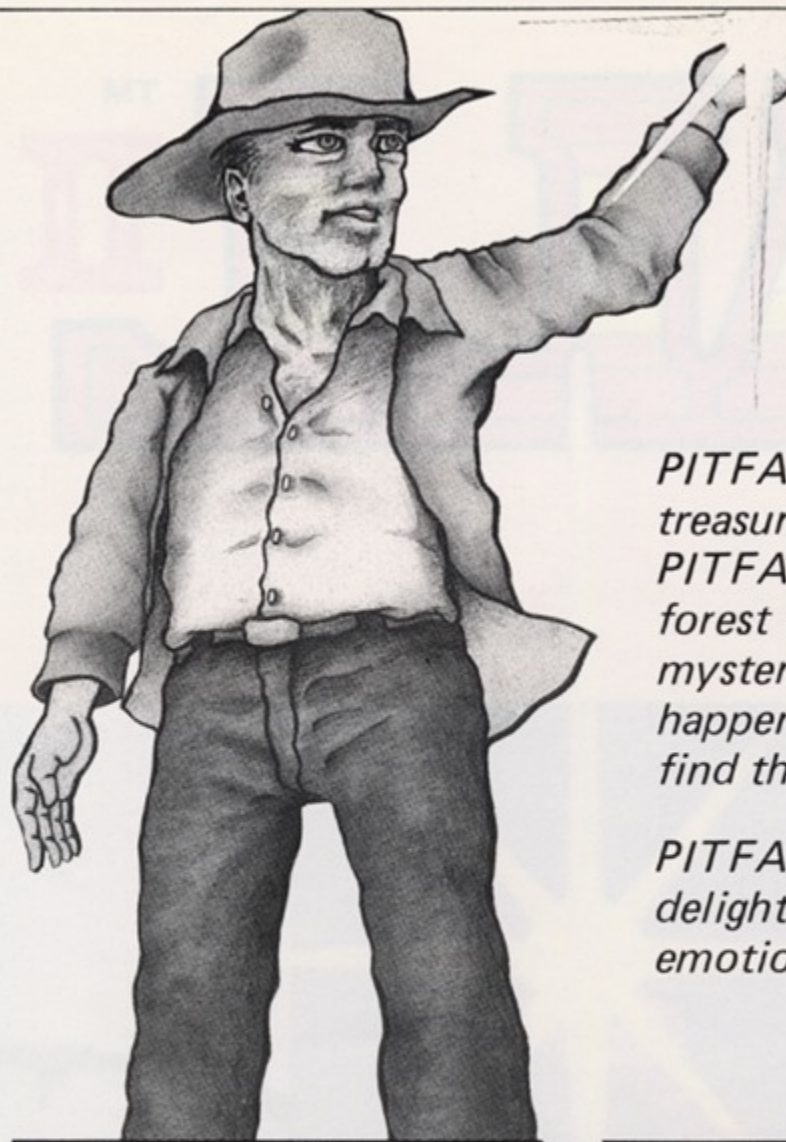
The Lost Caverns

©ACTIVISION, INC. 1984



PITFALL II™

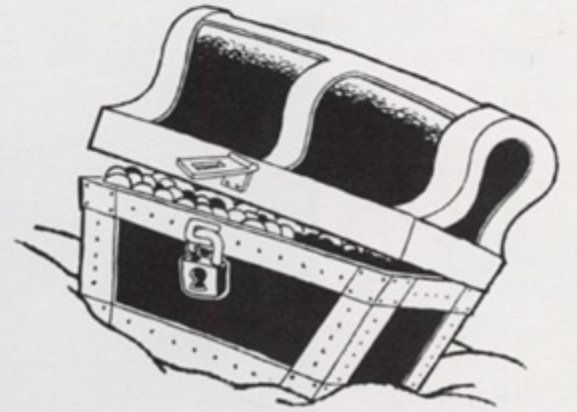
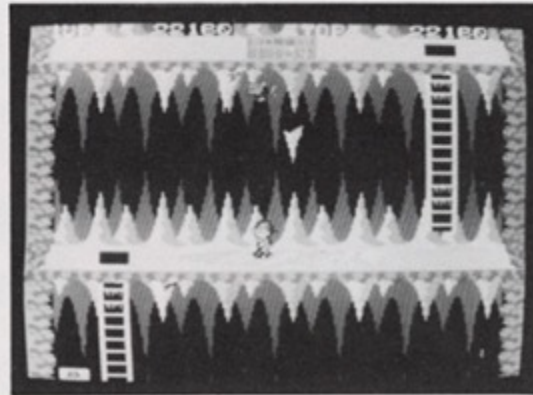
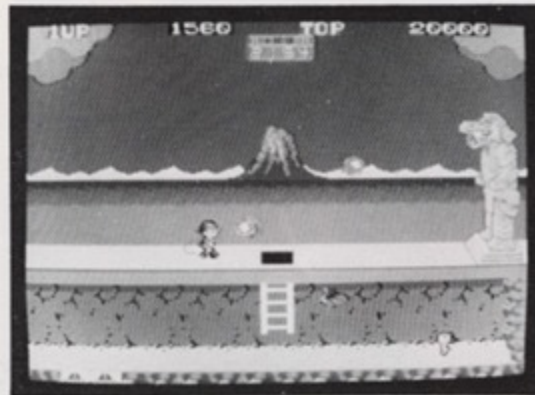
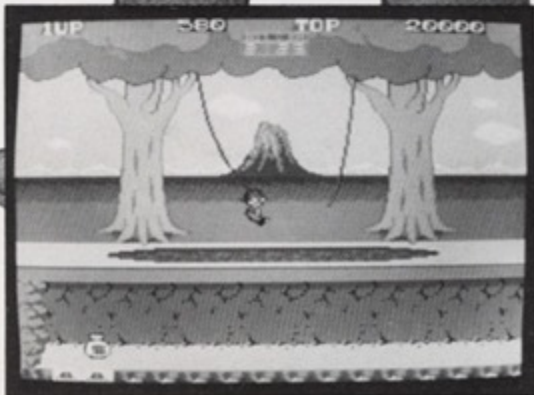
The Lost Caverns
©ACTIVISION, INC. 1984



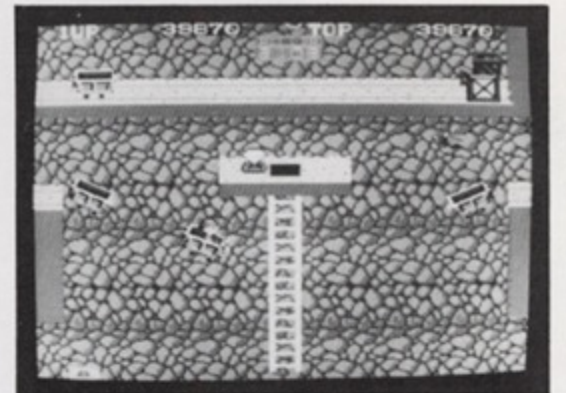
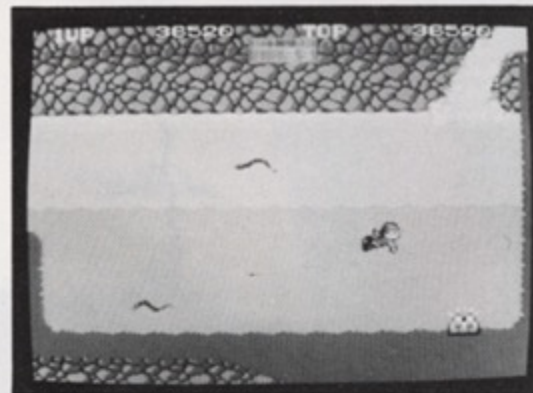
PITFALL HARRY has now started his adventurous search to locate the treasures secretly hidden in the ancient caverns!

PITFALL HARRY proceeds forward, going over grassland and through the forest while overcoming various crises - - - - but once stepping into the mysterious underground caverns, he finds an intricate maze in which wonderful happenings and all kinds of dangers await him can he ever successfully find the treasures?

PITFALL II—THE LOST CAVERNS is a thrill-packed, suspenseful and very delightful adventure game which requires the interplay of both logic and emotion, to aid you in successfully solving the riddles of the maze.

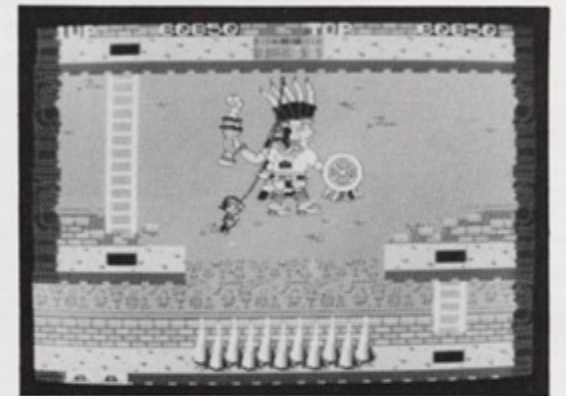


PITFALL II—THE LOST CAVERNS and its predecessor, **PITFALL**, as home computer game software, were very popular and successful games worldwide, including in particular, the U.S.A. and Europe. For this coin-op version, numerous innovations have been incorporated, resulting in an arcade piece which contains many new additional features.



HOW-TO-PLAY

- Locate the 3 treasures secretly hidden in the underground caverns by skillfully maneuvering PITFALL HARRY.
- Push the button to make PITFALL HARRY jump.
- When no more allotted time remains you lose one PITFALL HARRY. When picking up the BONUS treasures you earn points and additional play time.
- When capturing a key, a hole opens which allows you to proceed to the following cavern, with the remaining time converted and awarded as BONUS points.
- Adjustment to CONTINUE PLAY can be made by a DIP SWITCH change.



This game has been manufactured under license from **ACTIVISION, INC.**, U.S.A. and **PITFALL** and **ACTIVISION®** are trademarks of **ACTIVISION, INC.**

Manufactured and distributed by **SEGA®**

Design and specifications subject to change without notice. SG-8501E © SEGA 1985

SEGA®

Sega Enterprises, Ltd. 2-12, Haneda 1-chome, Ota-ku, Tokyo 144, Japan
Tel.: (03) 742-3171 Tlx: J22357 SEGASTAR Fax: (03) 745-3246

Sega Europe Limited 410-420 Rayners Lane, Pinner, Middx, HA5 5DY, ENGLAND
Tel.: 01-868 2331 Tlx.: 893501 SEGAUK G Fax: 01-429-3137