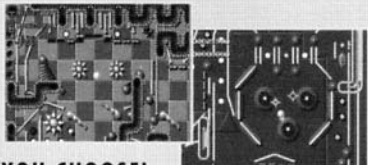


**"STANDS OUT AS ONE OF THE BEST PINBALL CARTS TODAY"**

• Mega Play Magazine

# VIRTUAL PINBALL

**YOU DESIGN YOUR OWN GAME  
IN THE ULTIMATE PINBALL ARCADE!**



## YOU CHOOSE!

6 cool game themes from a blood-drenched gorefest to a smooth pool table!



## YOU DECIDE!

Pick all the parts from the bumpers to the background!

## YOU PLAY!

It's like a complete arcade with 29 awesome pre-made games!

## SUPER FLIPPIN' FEATURES:

- CREATE YOUR OWN GAMES —FROM THE LAYOUT TO THE BALL SPEED
- 6 COOL GAME THEMES AND TEN SUPER BACKGROUNDS
- 38 DIFFERENT GAME PARTS TO CHOOSE FROM
- SAVE UP TO 10 GAMES
- 29 AWESOME PRE-MADE GAMES — 6 GAMES BY A TOP ARCADE PINBALL DESIGNER
- SUPER MULTI-LEVEL PLAY AND SPECIAL BONUS ROUNDS
- 1 TO 4 PLAYERS



ELECTRONIC ARTS® 708405

ELECTRONIC ARTS®



# BLADES OF VENGEANCE™

INTENSE BATTLE  
WITH UNBELIEVABLE EVIL



<http://www.replacementdocs.com>

## WARNING BEFORE USING YOUR SEGA VIDEO GAME SYSTEM.

A very small percentage of individuals may experience epileptic seizures when exposed to certain light patterns or flashing lights. Exposure to certain patterns or backgrounds on a television screen or while playing video games may induce an epileptic seizure in these individuals. Certain conditions may induce previously undetected epileptic symptoms even in persons who have no history of prior seizures or epilepsy. If you, or anyone in your family, has an epileptic condition, consult your physician prior to playing. If you experience any of the following symptoms while playing a video game — dizziness, altered vision, eye or muscle twitches, loss of awareness, disorientation, any involuntary movement, or convulsions — IMMEDIATELY discontinue use and consult your physician before resuming play.

### WARNING

#### To Owners of Projection Televisions!

Still pictures or images may cause permanent picture-tube damage or mark the phosphor of the CRT (television screen). Avoid repeated or extended use of video games on large-screen projection televisions.

## Table of Contents

Game Controls .....	3
Starting the Game .....	4
Object of the Game .....	4
Game Type: One or Two Player .....	5
Pausing the Game .....	5
One Player Game .....	5
Two Player Game .....	6
Characters .....	6
Selecting A Character .....	6
Combat .....	7
Normal Attacks .....	7
Special Attacks .....	7
Movement .....	8
Movement in Two Player Games .....	8
Hidden Areas .....	9
Scrolling An Area .....	9
Status Bar .....	9
Continues .....	10
Transferring Lives in a Two Player Game .....	10
Silver & Gold .....	10
Spells & Items .....	11
Equipping An Item .....	12
Buying Items .....	13
Finding Equipment .....	13
Power Ups .....	14
Power Up Areas .....	14
Levels .....	14
Scoring .....	14

## Artist Bios

Beam Software started developing games in 1980 on the very first home computer systems including the TRS80 and the Sinclair ZX80.

Since then Beam has progressed through the various home computer formats and since 1986 has focused on development of games for the console market.

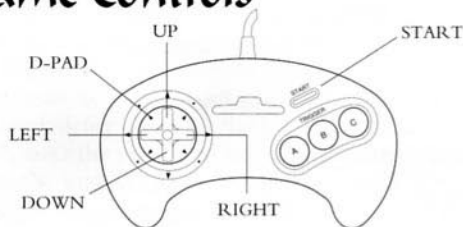
Beam currently employs over 70 people in its Melbourne offices, all dedicated gamers. The members of the Blades of Vengeance team have been responsible for a number of very successful console titles including Star Wars, Smash TV, Back to the Future and Shadowrun.



Left to right (back row): Wayne Simmons, Ken Newman, Andrew Bailey, Brad Aitken, Andrew Buttery, Jeff Kamenek, James Halprin, Marshall Parker, Tim McKay

Left to right (kneeling): Mark Maynard, Trevor Bardo, Simon Hart

## Game Controls



### SELECTING A CHARACTER

**D-Pad** Highlight Characters  
**START** Select A Highlighted Character

### MOVEMENT & COMBAT

**A** Uses Item shown in Status Menu  
**B** Attack  
**D-Pad Up + B** Special Attack  
**D-Pad Down** Defensive Crouch  
**D-Pad Down + B** Crouch and Attack  
**C** Jump  
**C + B** Jump and Attack/Jump Higher  
**D-Pad Left/Right** Move Left/Right  
**D-Pad Up/Down** Climb Up/Down Ladder  
(press the **D-Pad Up** to make a Character grab onto a Ladder before trying to climb it)  
**D-Pad Up** Go Through Door  
(when standing in doorway)  
**START** Pause/Resume

### WHILE THE GAME IS PAUSED

**D-Pad Up/Down** Scroll Through Inventory  
**D-Pad + C** Preview surrounding area

## CINEMATIC SEQUENCES

- START** Leave Cinematic Sequence  
**A, B, or C or D-Pad Down** Turn Pages

## BUYING ITEMS

- D-Pad** Highlight Item or Exit  
**A** Buy Highlighted Item or Select Exit

## Starting the Game

1. Turn OFF the power switch on your Sega™ Genesis™. Never insert or remove a game cartridge when the power is on.
2. Make sure a Controller is plugged into the port labeled Control 1 on the Genesis Console.
3. Insert the game cartridge into the slot on the Genesis. To lock the cartridge in place, press firmly.
4. Turn ON the power switch.  
The Electronic Arts® logo appears (if you don't see it, begin again at step 1). Press **START** to begin the game.

## Object of the Game

The Kingdom has been conquered by Mannax the Dark Lady, and the forces of good have been put to flight. The Master has summoned the only three remaining adventurers who can defeat Mannax. They are the Kingdom's only hope.

Set out alone, or with a compatriot. Guide your character

through 8 levels of fantasy adventure and danger. Your Master gives you general hints about what you will face at the beginning of every level, but cannot otherwise help you. Kill the evil monsters who block your way and find magic items to help you in your battles. At the end of the final level, defeat Mannax the Dark Lady to win the final victory over the powers of evil and return order and goodness to the land.

## Game Type

There are two types of game in Blades of Vengeance: One Player and Two Player.

To select the type of game you want to play:

1. When the title screen appears, press the **D-Pad** up/down to highlight One Player or Two Player.
2. Press **Start** to select it. If you select Two Player, make sure you have a controller plugged into port 2.

A second player can enter a one player game at any time. To do this:

1. Make sure the second controller is plugged in before you start the game. Do not plug in a second controller while the game is in progress.
2. Press **START** on the second controller.
3. Follow the instructions for selecting characters.

## Pausing the Game

### One Player Game

Press **START** to pause the game. Press **START** again to resume it.



## Two Player Game

### Pausing One Player

In a two player game, one player can pause the game for his character while the other player's character is free to explore. The paused character cannot be hit or otherwise damaged while the active character is exploring.

For a paused player to catch up with an active player who has gone on ahead:

1. The active player presses **START** to pause his game.
2. The previously paused character presses **START** to unpause his game. They can then catch up to the other character, who presses **START** to unpause. The two characters can then resume adventuring together.

### Pausing Both Players

Both players must press **START** simultaneously to pause or resume the game.

## Characters

There are three characters in Blades of Vengeance: The Huntress, The Barbarian, and The Wizard.

### Selecting A Character

To select a character:

1. Press the **D-Pad** left/right to highlight the different characters on the Character Selection Screen. This screen appears at the beginning of the game after you have selected the game type.
2. To elect a highlighted character, press **START**.

## Combat

You will face many enemies in Blades of Vengeance. You can fight them with normal attacks or special attacks. Characters attack in the direction they are facing.

### Normal Attacks

To make a Character attack normally, press B.

To make character deliver a sweeping overhead blow, press and hold the **D-Pad** Up and press B. Only the Barbarian and Huntress can give overhead blows; the Wizard cannot.

To make a character attack from a defensive crouch, press B while pressing the **D-Pad** down.

### Special Attacks

All Characters have a Special Attack when they are armored.

- The Huntress' special attack is an extra-powerful cross-bow missile that divides into three power bursts.
- The Barbarian's special attack is to whirl his mace before him.
- The Wizard's special attack is an enhanced blast of magical energy.

To use a Special Attack:

1. Press and hold the **D-Pad** Up.
2. The Wizard and the Huntress must wait for a full power build up to use their Special Attacks. The Wizard's staff and the Huntress' crossbow will pulse with light as their power is building up; power must be sufficiently built up before you can use their Special Attack.



There is no power build-up necessary for the Barbarian to use his Special Attack.

3. Press **B** to use the Special Attack.

## Movement

Use the **D-Pad** to move a Character around. This includes walking, climbing ladders, going through doors, etc.

To Jump, press **C**. Use the **D-Pad** to guide the direction of a Jump.

To go through a door, stand in the doorway and press the **D-Pad Up**.

To climb up a ladder, stand at the bottom of the ladder and press the **D-Pad Up**. When you reach the top, press the **D-Pad left/right** and press **C**. To climb down a ladder, walk into the ladder and press the **D-Pad up** to grasp the ladder; then press it down to climb down.

## Movement in Two Player Games

In a two player game, Player 1 uses the controller plugged into Control 1 and Player 2 uses the controller plugged into Control 2.

Player 1 and Player 2 can only move a short distance apart, roughly half the width of the game screen. When characters get too far apart, it can become difficult for either of them to maneuver.

If a character falls into a hole, off a cliff, etc., their game will be automatically paused until the other character reaches their location.

To go through a door in a two player game, both characters must be in the doorway and press the **D-Pad up** simultaneously.

## Hidden Areas

While you are exploring, make sure to look for hidden areas. To find these, Jump into walls. You may also find some of them by pressing the **D-Pad up** or down.

## Scrolling An Area

You can scroll a surrounding area to see what's just above, below, behind, or ahead of you:

1. Press **START** to pause the game.
2. Press and hold **C** to see the Scroll icon in the Equipment window.
3. Press the **D-Pad up/down/left/right** to Scroll the surrounding area.
4. To stop Scrolling, release **C** and press **START** again.

## Status Bar

Keep an eye on your Character's Status Bar at the bottom of the screen. It gives you vital information on your Character's well-being:

**Character Portrait:** What your character looks like.

**Number of Lives:** The number immediately beside the Portrait. You begin the game with three lives.

**Life Spiral:** A red helix that shortens when hit points are reduced and lengthens when they are increased. When the red in your Life Bar is gone, your current life is over. If you have any lives left, your next life will begin in the Level where you died, but at an earlier stage of your exploration.

**Score:** The points you've won so far.

**Equipped Item:** The Item pictured in the frame at the right edge of the Status Bar is your Equipped Item; the number appearing beside the item is how many of that item you have. If you have no item equipped, or no items at all, a bag of silver will appear in this window. To use an Equipped Item, press A. See the Spells & Items section of this manual for more information.

**Power Ups:** Power Ups give your attacks extra strength. They appear as diamonds above the Status Bar, and twinkle when they're activated. (See the Power Ups section of this manual for more information.)

## Continues

You get a Continue (good for an extra three lives) when you've won 75,000 points, and another Continue every 75,000 points thereafter.

## Transferring Lives in a Two Player Game

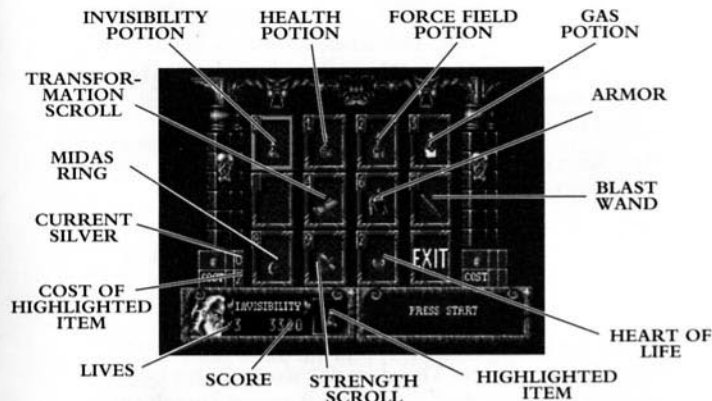
If a player runs out of lives, and the other player has more the one life left, a life can be transferred to the player who is out.

The player who is out of lives must press **A**, **B**, and **C** simultaneously to get a life from the other player. Note that the player who is losing a life cannot prevent the other player from taking it.

## Silver & Gold

Silver is the coin of the realm in Blades of Vengeance, and you need it to buy magical items. You will find bags of silver in chests or left behind by monsters when you destroy

them. You will find bags of gold, each worth ten bags of silver. To pick up a bag of gold or silver, walk up to it.



## Spells & Items

Spells are contained in enchanted items. You can find these items while adventuring, or you can buy them in stores. Items are usable once only. The different types of items are:

**Invisibility Potion:** Swallowing this silvery drink that makes you invisible to monsters.

**Healing Potion:** Drinking this red elixir restores a portion of lost health.

**Force Field Potion:** Quaffing this golden beverage creates a field of force around you through which monsters cannot attack and traps cannot penetrate.

**Gas Potion:** Imbibing this bubbling brew protects you against the effects of poisonous vapor. This is used only in

the dungeon.

**Strength Scroll:** This scroll increases the amount of damage you do in weapon combat.

**Transformation Scroll:** This scroll transforms all Monsters on screen into Zombies. (Note: This does not work against Bosses at the end of levels. And do not use it against Guards carrying shields.)

**Key:** Keys open locked barriers. (Note: You don't need to use a key to open ordinary doors.)

**Armor:** This is metallic armor for the Barbarian and Huntress, and a magic robe and hat for the Wizard. It bestows extra protection and the power to use Special Attacks.

**Midas Ring:** This ring turns opponents on screen into bags of silver. (Note: This does not work against Bosses at the end of levels. And do not use it against Guards carrying shields.)

**Blast Wand:** This magic stick kills most things with one shot. More than one monster at a time can be killed by a Blast Wand. Some monsters are damaged but not killed by a single Blast Wand's power. The Bosses at the end of levels cannot be killed by a Blast Wand.

**Heart of Life:** These beating hearts give you an additional life. Hearts are found *only* in the Store, never while adventuring.

## Equipping an Item

1. Press **START** to pause the game and call up the Item window.
2. Press the **D-Pad** up/down to scroll through your inventory of Items. You can also see how many of

each Item you have.

3. When the item you want to equip appears, press **START** again.

## Buying Items

You can buy Equipment between levels in the Store. Every item of Equipment will not necessarily be available from the Store between every Level.

To buy equipment:

1. Look at your current supply of silver. For player 1, this is in a box above your status bar in the lower left corner of the screen; for player 2, it is in the lower right corner of the screen. Your silver supply is to the right of a silver bag icon; the cost of a highlighted item is directly below it.
2. Use the **D-Pad** to move the highlight to different items. The cost of a highlighted item will appear in the silver supply box. The name of the item appears in your Status Box; if you already have the highlighted Equipment in your inventory, the number of it you have will appear in the status box.
3. If you want an item, and you have enough silver to buy it, press **START** or **A** when the item is highlighted.
4. To leave the Store, highlight EXIT and press **START**.

## Finding Equipment

Equipment can be found in chests, or is sometimes left behind by Monsters you kill.

To open a Chest, hit it as per an attack.



To add equipment to your inventory, walk up to it. Be on the look out for Chests that do not appear until you have moved past them and tripped a trigger.

## Power Ups

When you are not wearing Armor, you can have two Power Ups. Your attacks are more effective after you activate your Power Ups by passing through Power Up Areas. (See following section.)

When you are wearing armor, you automatically have two active Power Ups, even though the diamonds on your Status Bar won't twinkle. While armored, you can acquire two more Power Ups for a total of four.

## Power Up Areas

You will encounter sparkling areas during your adventures. These are Power Up Areas that activate your Power Ups when you walk through them.

## Levels

There are 8 levels in Blades of Vengeance. You will face a powerful Boss at the end of each level, whom you must kill to advance to the next level.

Before you enter a new Level, your Master will appear and give you a general description of what you are about to face.

## Scoring

Scoring is based on the number of Monsters you kill and the Equipment you find.

Points for Monsters are awarded as you destroy them. Points for Items are awarded at the end of every level.

## Credits

Original Design by Creative Software Designs  
World Designers: Justin Halliday, Wayne Simmons  
Graphics: Simon Hart, Ken Newman, Holger Liebnitz,  
Alan Djorksten, Mark Maynard  
Sound and Music: Marshall Parker, Ian Eccles Smith  
System Programmers: Trevor Bardo, Andrew Bailey  
Game Programmers: Tim Mackey, Jeff Kamenek  
Producer (EA): Chris Wilson  
Producer (Beam Software): Adam Lancman  
Assistant Producer: John Boerio  
Technical Director: Tim Brengle  
Testing: Yun Shin, Jeff Hasson  
Additional Testing (Beam Software): Andrew Buttery,  
Brad Aitken, Will Baillieu, Leigh Reynolds  
Product Manager: Lisa Higgins  
Art Direction: Nancy Waisanen  
Package Design: E.J. Sarraille Design Group  
Package Art: Randy Barrett  
Documentation: Michael Humes  
Documentation Layout: Tom Peters  
Quality Assurance: Rich Rogers, Dan Gossett, Tim  
LeTourneau  
Special Thanks to James Halprin

### **ELECTRONIC ARTS LIMITED WARRANTY**

Electronic Arts warrants to the original purchaser of this Electronic Arts software product that the medium on which this computer program is recorded is free from defects in materials and workmanship for a period of ninety (90) days from the date of purchase. This Electronic Arts software pro-

gram is sold "as is," without express or implied warranty of any kind, and Electronic Arts is not liable for any losses or damages of any kind resulting from use of this program. Electronic Arts agrees for a period of ninety (90) days to either repair or replace, at its option, free of charge, any Electronic Arts software product, postage paid, with proof of purchase, at the Electronic Arts Warranty Department. This warranty is not applicable to normal wear and tear. This warranty shall not be applicable and shall be void if the defect in the Electronic Arts software product has arisen through abuse, unreasonable use, mistreatment or neglect.

**LIMITATIONS - THIS WARRANTY IS IN LIEU OF ALL OTHER WARRANTIES AND NO OTHER REPRESENTATIONS OR CLAIMS OF ANY NATURE SHALL BE BINDING ON OR OBLIGATE ELECTRONIC ARTS. ANY IMPLIED WARRANTIES APPLICABLE TO THIS SOFTWARE PRODUCT, INCLUDING WARRANTIES OF MERCHANTABILITY AND FITNESS FOR A PARTICULAR PURPOSE, ARE LIMITED TO THE NINETY (90) DAY PERIOD DESCRIBED ABOVE. IN NO EVENT WILL ELECTRONIC ARTS BE LIABLE FOR ANY SPECIAL, INCIDENTAL, OR CONSEQUENTIAL DAMAGES RESULTING FROM POSSESSION, USE OR MALFUNCTION OF THIS ELECTRONIC ARTS SOFTWARE PRODUCT.**

Some states do not allow limitations as to how long an implied warranty lasts and/or exclusions or limitations of incidental or consequential damages so the above limitations and/or exclusions of liability may not apply to you. This warranty gives you specific rights, and you may also have other rights which vary from state to state.

**RETURNS AFTER WARRANTY** - To replace defective media after the ninety (90) day warranty period has expired, send the original cartridge to Electronic Arts' address below. Enclose a statement of the defect, your name, your return address, and a check or money order for \$20.00:

Electronic Arts  
Customer Warranty  
P.O. Box 7578  
San Mateo, California 94403-7578

If you need to talk to someone about this product, call us at (415) 572-9448 Monday through Friday between 8:30 am and 4:30 pm, Pacific Time.

In Australia and New Zealand, contact:  
Electronic Arts Pty. Limited  
P.O Box 432  
southport, Qld 4215  
Australia

Within Australia call:  
Phone: (075) 711 811

within new zealand call:  
+61 75 711 811  
between 9am-5pm eastern standard time

Unless indicated otherwise, all software and documentation is ©1993 Electronic Arts. All Rights Reserved.

BLADES OF VENGEANCE is a trademark of Electronic Arts

Licensed by Sega Enterprises, Ltd. for play on the Sega™ Genesis™ system.

Sega and Genesis are Trademarks of Sega Enterprises, Ltd.

