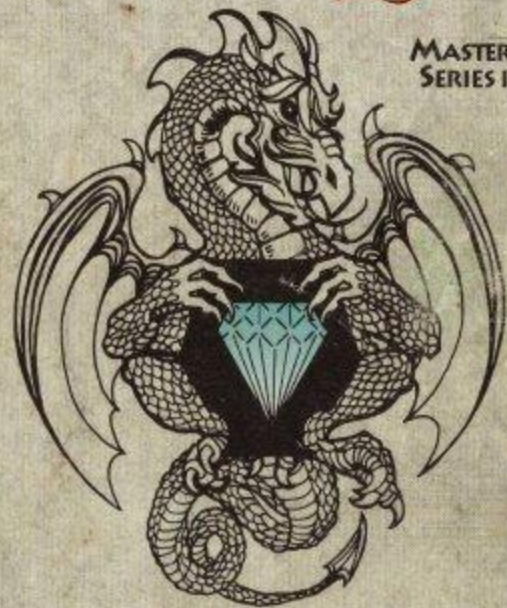


Wizardry

MASTER'S
SERIES II



KNIGHT OF DIAMONDS

THE SECOND SCENARIO

A GAME OF FANTASY AND ADVENTURE

ADVENTURER'S GUIDE

ASCIIWARE

4 140

PRECAUTIONS

- 1) Always turn the power off before inserting or removing the Game Pak from your Nintendo Entertainment System.
- 2) This is a high-precision game. It should not be stored in places that are very hot or cold. Never hit it or drop it. Do not take it apart.
- 3) Avoid touching the connectors. Do not get them wet or dirty. Doing so may damage the game.
- 4) Do not clean with benzene, paint thinner, alcohol, or other such solvents.

All rights reserved. No part of this software or printed material may be reproduced in any way, or transmitted, in any form or by any means, electronic, mechanical, photocopying, recording, or otherwise without prior written permission in writing from the publisher, except by reviewers, who may quote brief written passages to be printed in a magazine or newspaper.

Copyright ©1991 by Andrew Greenberg, Inc. and Sir-Tech Software, Inc.
All Rights Reserved.

Wizardry is a registered trademark of Sir-Tech Software, Inc.

Wizardry-Knight of Diamonds is a copyrighted program licensed to ASCII Corporation by Sir-Tech Software, Inc.

Programmed by Game Studio, Inc.

Published by ASCII Entertainment Software, Inc.

All logos copyright ©1991 by Sir-Tech Software, Inc.

Nintendo and Nintendo Entertainment System are trademarks of Nintendo of America Inc.
Adventurer's Guide written by Brenda Garno.

This game is licensed by Nintendo®
for play on the



This official seal is your assurance that Nintendo® has renewed this product and that it has met our standards for excellence in workmanship, reliability and entertainment value. Always look for this seal when buying games and accessories to ensure complete compatibility with your Nintendo Entertainment System®.

SPECIAL GUIDE BOOK OFFER

Wizardry Knight of Diamonds is one of the most challenging role-playing games ever created. You may find it necessary to ask for help during your adventure.

We would like to offer you a special Guide Book to make Wizardry your most enjoyable electronic game experience. To take part in this special offer, please fill out this form and enclose your check or money order to:

ASCII ENTERTAINMENT SOFTWARE INC.

ATTN: Wizardry Knight of Diamonds Guide Book Offer

P. O. Box 6639

San Mateo, CA 94403

Name _____

Address _____

City _____

State _____

Zip _____

Send _____ (Qty.) Wizardry Knight of Diamonds Guide Books at \$12.00 (US \$) each.


U.S. dollars only. California residents add 8.25% sales tax (\$.99 per book).

Add \$2.00 postage and handling per book.

Total amount enclosed. (US \$) _____

Allow 4-6 weeks for delivery.

Limited Quantity Available

Cut Here 

WARNING:

VIDEO GAME GENERAL'S WARNING: Wizardry® is for Serious Game Players Only. Guaranteed to Stretch the Limits of Your Imagination.

Period.

Wizardry

PROVING GROUNDS OF THE MAD OVERLORD
A FANTASY ROLE-PLAYING SIMULATION

AVAILABLE NOW AT YOUR LOCAL VIDEO GAME RETAILER.

This game is licensed by Nintendo®
for play on the

Nintendo
ENTERTAINMENT
SYSTEM®



Copyright ©1990 by Andrew Greenberg, Inc. and Sir-Tech Software, Inc. All rights reserved.

WE APPRECIATE YOUR QUESTIONS AND COMMENTS

Of course, no quest can be solved without overcoming many puzzles. Should you find yourself stumped, call or write ASCII to get the hints you need. We will do our best to get you and your party adventuring again.

HOTLINE SUPPORT SYSTEM AVAILABLE 5 DAYS A WEEK

(415) 570-7005, Weekdays 9:00-5:00 p.m., Pacific Standard Time
Address your written requests or comments to: Attn: Consumer Service
ASCII Entertainment Software, Inc., 366-A Lakeside Drive, Foster City, CA 94404

AVAILABILITY

Wizardry Knight of Diamonds is also available for IBM (and 100% compatibles), Apple, Commodore 64/128 and Macintosh computer systems. Wizardry II, III, IV and V are also available on IBM, Apple and Commodore 64/128 (except Wizardry IV) computer systems. Bane of the Cosmic Forge (Wizardry VI) is available on IBM, Macintosh and Amiga computer systems. Crusaders of the Dark Savant (Wizardry VII) is available for IBM, Amiga and Macintosh computer systems. Contact your local software dealer for further information.

IBM is a registered trademark of International Business Machines.
Apple and Macintosh are registered trademarks of Apple Computer.
Amiga is a registered trademark of Commodore Business Machines.

WARNING: DO NOT USE WITH FRONT OR REAR PROJECTION TV!

Do not use a front or rear projection television with your Nintendo Entertainment System® ("NES") and this video game. Your projection television screen may be permanently damaged if video games with stationary scenes or patterns are played on your projection television. Similar damage may occur if you place a video game on hold or pause. If you use your projection television with this video game, neither ASCII nor Nintendo of America Inc. will be liable for any damage. This situation is not caused by a defect in the NES or this game; other fixed or repetitive images may cause similar damage to a projection television. Please contact your TV manufacturer for further information.

ADVISORY: READ BEFORE USING YOUR NES

A very small portion of the population may experience epileptic seizures when viewing certain kinds of flashing lights or patterns that are commonly present in our daily environment. These persons may experience seizures while watching some kinds of television pictures or playing certain video games. Players who have not had any previous seizures may nonetheless have an undetected epileptic condition. We suggest that you consult your physician if you have an epileptic condition or if you experience any of the following symptoms while playing video games: altered vision, muscle twitching, other involuntary movements, loss of awareness of your surroundings, mental confusion and/or convulsions.

T ABLE OF CONTENTS

THE MISSION	7
CONTROLLER OPERATION	8
BEGINNING THE GAME	10
QUICK START	12
CITY OF LLYLGAMYN	13
INSIDE THE CITY	14
GETTING STARTED	16
MAPPING YOUR ADVENTURE	19
ENDING AND RESTARTING THE GAME	22
REFERENCE SECTION	23
THE TRAINING GROUNDS: CREATING A CHARACTER	25
CHARACTER'S RACE	26
CHARACTER'S ALIGNMENT	29
CHARACTER'S PROFESSION	30
THE TRAINING GROUNDS: OTHER OPTIONS	36
GILGAMESH'S TAVERN	40
THE ADVENTURER'S INN	42
THE TEMPLE OF CANT	43
BOLTAC'S TRADING POST	44
THE EDGE OF TOWN	45
ADVENTURING	46
COMBAT	49
AFTER COMBAT	51
THE CEMETERY	52
HINTS FOR ADVENTURE	53
MAGICAL SPELLS	54
MAGE SPELLS	55
CLERIC SPELLS	60
QUESTIONS AND ANSWERS	66
FCC REGULATIONS/LIMITED WARRANTY	67

T HE MISSION



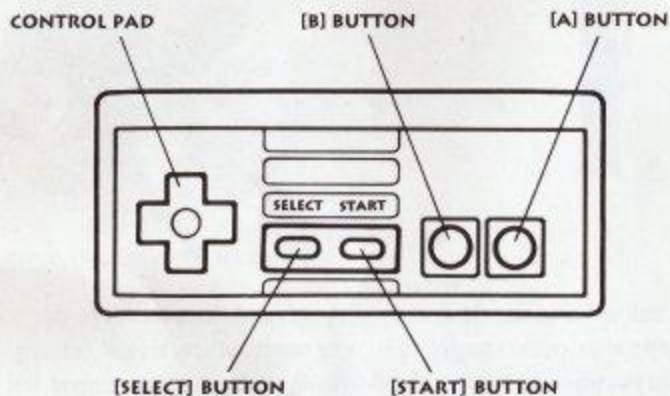
The staff of Gnilda was the first example of its creator's forging skill. When properly used, it rendered the City of Llylgamyn invulnerable.

The staff projected a force field totally impervious to any physical or magical attack. Those who wanted to threaten Llylgamyn could not approach the city, while those who came with goodwill could enter and leave freely. It was the perfect defense, but it had one fatal flaw ... those born in Llylgamyn were unaffected by the staff. Thus it was possible for the evil Davalpus, aided by the forces of darkness, to seize the throne of Llylgamyn and slay the royal family. Fortunately, the young Princess Margda and her brother Prince Alavik survived the royal coup.

Margda and Alavik both knew that there was but one hope of defeating Davalpus. Together they retrieved the fabled armor of the great hero, the "Knight of Diamonds." Alavik, wearing the mystical garb and carrying the staff, engaged Davalpus in an epic battle in the city of Llylgamyn.

Davalpus fell, but with his dying breath uttered a curse so unspeakable that it brought the castle down around the two combatants. All that was left was a smoking hole in the ground. Davalpus, Alavik and the staff were gone. If it is not returned, the city will fall!!

CONTROLLER OPERATION



IN THE CITY OF LLYLGAMYN:

The Control Pad [+]: Moves the arrow [>] up and down to select between commands.

The [A] Button: Activates the selected command.

The [B] Button: Cancels the previous command selected.

IN THE MAZE:

The Control Pad [+]: Pressing **LEFT** or **RIGHT** on the Control Pad will turn your party 90 degrees in either direction. Pressing **UP** on the

Control Pad will move your party forward one space. Pressing **DOWN** on the Control Pad will reverse your party's direction (turn around 180 degrees).

The [A] Button: Press the [A] button to kick down doors found throughout the maze. You may also search for hidden doors by pressing [A] when in front of walls. If there is no hidden door, the "OUCH" message will appear. You may also use the [A] button to advance your party one space forward in the maze. (Just like pressing **UP** on

your Control Pad.)

The [B] Button: You may enter Camp any time you wish while traveling in the maze by pressing the [B] button. You may not enter Camp during an encounter.

The [START] Button: Press the [START] button to erase the party sub-screen and reveal the entire maze. Pressing the [START] button again will bring the sub-screen back.

The [SELECT] Button: Pressing the [SELECT] button will cause the maze **OPTIONS** window to appear.

TO CAST A SPELL:

The Control Pad [+]: Press the

Control Pad **LEFT** or **RIGHT** to choose between **MAGE** and **CLERIC** spells. Press the Control Pad **UP** or **DOWN** to choose a specific spell. (For the **MALOR** spell, press the Control Pad **UP** or **DOWN** to choose direction. Press the Control Pad **LEFT** or **RIGHT** to change direction.)

The [A] Button: Press the [A] button to cast the selected spell. (For the **MALOR** spell, use the [A] button to activate **MALOR**.)

The [B] Button: Press the [B] button to cancel spell selection.



B



Wizardry

The Knight of Diamonds
Welcome to
the world of Wizardry

Start game
Select switch

MAZE	SOLID	LINE
MUSIC	ON	OFF
SOUND	ON	OFF
RETURN TO TITLE		

Insert the **WIZARDRY KNIGHT OF DIAMONDS** Game Pak into the Nintendo Entertainment System (NES) and depress the **POWER** button to show the title page. Move the arrow [**>**] with your Control Pad [**+**] to **START GAME** and press the [**START**] button or [**A**] button on your Controller.

OPTIONS MENU

Move the arrow [**>**] with your Control Pad [**+**] to **SELECT SWITCH** (the **OPTIONS** menu) and press the [**START**] button on your Controller. Move the Control Pad up and down to select between maze, music, and sound. When you make your selection, move the Control Pad [**+**] left or right to choose the solid graphic maze or the outlined maze, turn the music on or off or turn the sound effects on or off.

When you have finished making your selections, move your Control Pad down until "**RETURN TO TITLE**" is highlighted. Then press the [**A**] button on your Controller to return to the title screen.

QUICK START

Entering the world of Wizardry and creating your party of adventurers can sometimes be a long process. If you wish to jump right into the game, you will find a party of six characters that are ready to go. Follow these simple steps to get you going, then continue reading to learn how to create your own personalized characters.

When you start the game, you will be in the City of Llylgamyn.

- 1) Enter Gilgamesh's Tavern, select the "ADD" function.
- 2) Move the arrow [>] to the character's name you want to select. Press the [A] button to select that character.
- 3) When you have selected all six characters, press the [B] button to return back to Llylgamyn.

These six characters are already

equipped with the necessary armor and weapons, so there will be no need to purchase any items from Boltac's Trading Post.

- 4) Select the "EDGE OF TOWN" option from the main menu in Llylgamyn.
- 5) Select the "MAZE" option from the Edge of Town menu.

Your characters have now set up camp inside the maze.

- 6) Select the "REORDER" option from the Camp menu.
- 7) Reorder your characters from the strongest to the weakest. (Your Fighters are the strongest characters. They will do all the fighting so make sure they are in the front line.)
- 8) Press the [B] button to exit Camp and your characters are in the maze and ready to go!

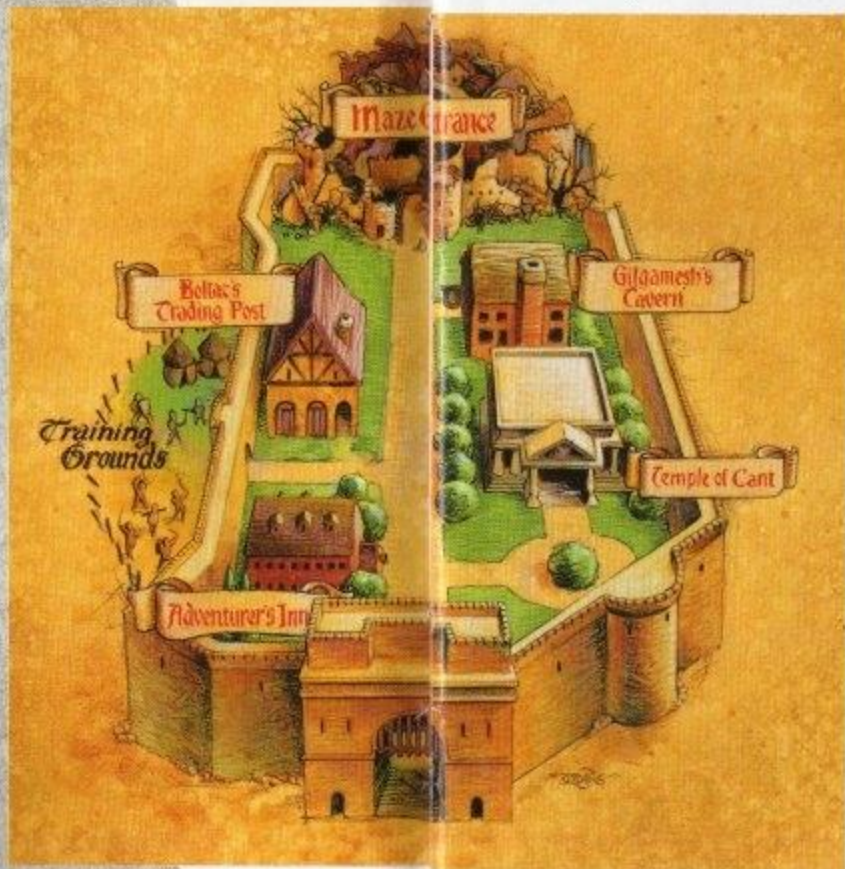
THE CITY OF LLYLGAMYN

When the game has started, the display of PHOTO 1 will appear. You are now inside the City of Llylgamyn. The City of Llylgamyn is the starting point of all adventures, the relay point and the final point. You and your characters may return to the City of Llylgamyn at any time to rest, heal up or buy useful items for your adventure. Let us take a walk inside the City of Llylgamyn.



PHOTO 1. There are many facilities inside the City of Llylgamyn.

INSIDE THE CITY



GILGAMESH'S TAVERN

At the tavern, many adventurers gather in small groups. By choosing among them, you hope to build a team capable of surviving the rigors of the dungeon.

ADVENTURER'S INN

The Inn offers several services your characters will need from time to time. Here your characters can rest, be healed for a fee, gain experience levels and recoup magic points.

THE TEMPLE OF CANT

The Temple clerics offer characters who have been demised or otherwise humbled a second chance at life. For a fee, the clerics will attempt to resurrect characters who are deceased or in ashes, and will cure those who have become paralyzed or petrified.

BOLTAC'S TRADING POST

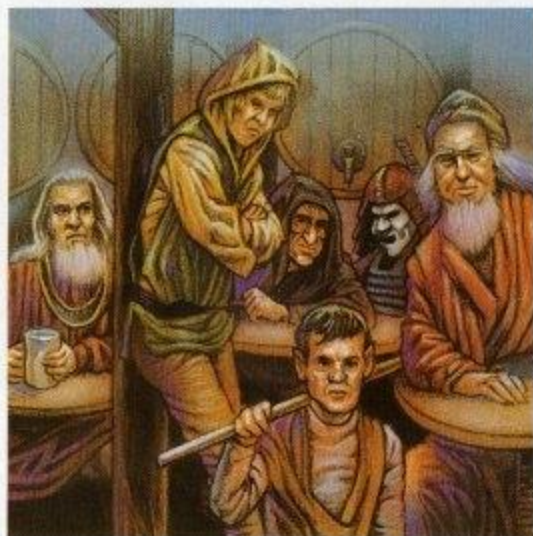
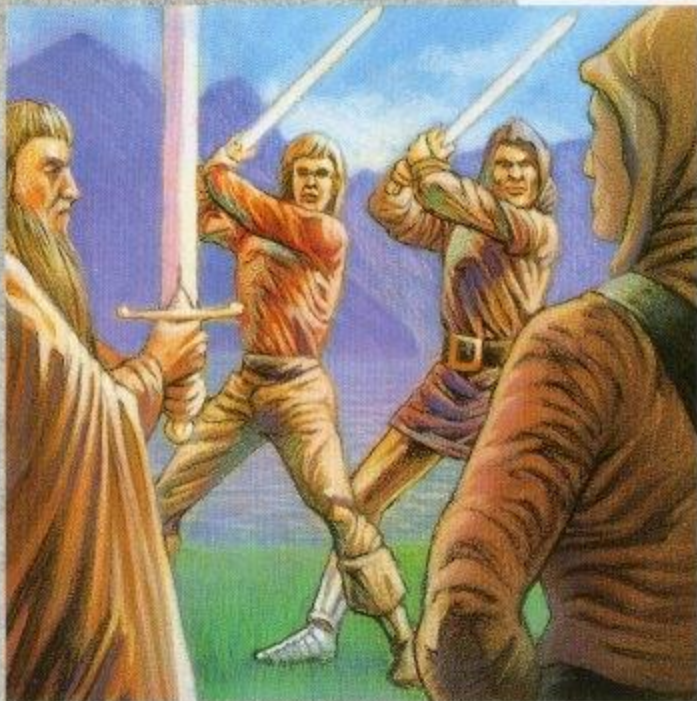
Boltac buys and sells weapons, armor and other items your characters may find necessary or useful in their adventure. Boltac will also remove curses from items and identify items of unknown origin.

THE EDGE OF TOWN

The Edge of Town leads you out of the City of Llylgamyn to the Training Grounds, where you create your characters, and into the maze where all adventuring takes place.

G

ETTING STARTED



CREATING A CHARACTER IN THE TRAINING GROUNDS

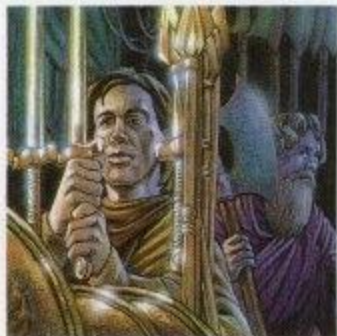
You may create your own characters for your adventure in the Training Grounds at the Edge of Town. However, if you would like to get a taste of the dungeon right away, you will find six characters already created for you in Gilgamesh's Tavern.

ASSEMBLING A PARTY AT GILGAMESH'S TAVERN

After creating your characters, a

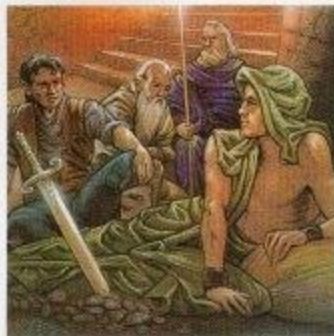
party (a group of characters for the adventure) is assembled in the tavern. You should have six characters in your party, as any less often spells disaster for you and your troop. To get a good balance of characters for combat and adventure, gather three characters of the fighting variety (Fighter, Samurai, Lord), two magic users (Cleric, Mage, Wizard) and a Thief.

*Your characters must be either all good and neutral or evil and neutral. A good and an evil character cannot join together in the Tavern.



BUYING WEAPONS AND ARMOR AT BOLTAC'S TRADING POST

Before your characters enter the maze, they will need weapons and armor to defend and protect themselves. For a fee, Boltac will provide your characters with everything they need. Characters you have created in the Training Grounds will have a small gold allowance to buy such items. However, the pre-created characters found in the Training Grounds already have the necessary armaments, and do not need to visit Boltac's at this time.



ADVENTURING INTO THE MAZE

With their weapons ready and a thirst for battle, your characters head to the **EDGE OF TOWN** and into the maze. As your party enters the dungeon, they set up Camp to prepare themselves for the hazards ahead. Here you should first **EQUIP** your characters for battle with the items you purchased at Boltac's. Afterward, **REORDER** your party. Remember that the first three characters in the lineup can attack with weapons, and may be physically hit by the monsters. Put characters of the fighting variety in these ranks. Magic users and thieves should remain in the back ranks.

MAPPING YOUR ADVENTURE

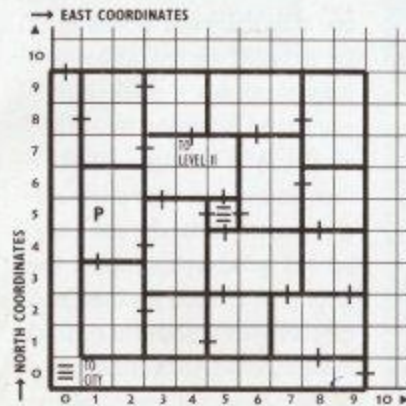
As you pilot your party through the maze, making an accurate map of your travels is recommended! Here are a few hints to help freshen you up on your mapping skills.

First of all, there are six floors to the dungeon. Each floor is based on a 20x20 grid. When you first enter the maze, your party will be facing 0 NORTH, 0 EAST. This should be the lower left hand corner of your map.

Using a piece of graph paper will help immensely. On your graph paper, you should have a row of

numbers (0-19) on the bottom and on the left hand side. The numbers on the bottom will be your eastern coordinates, and the numbers on the left will be the northern coordinates. If you were to map out the first couple of rooms on level one, it would look like Figure 1 below.

If you need further assistance with mapping, the complete maps to the dungeon can be found in the Wizardry Knight of Diamonds guide book. The order form for the guide book is located in the front of this manual.



EXAMPLE FOR MAPPING YOUR ADVENTURE—LEVEL 1

P = PIT (1-EAST/5-NORTH)
 ≡ = STAIRS
 † = DOOR

↳ to level 2

Figure 1. Actual graph should be based on row numbers 0-19 on the bottom and on the left hand side.

ENDING AND RESTARTING THE GAME

ENDING YOUR SESSION

When you have finished playing **WIZARDRY**, and are ready to turn the power off, follow the steps below to properly save the game.

IN THE CITY OF LLYLGAMYN:

Go to the Edge of Town and select **[LEAVE GAME]**. Turn Power switch off while pressing **[RESET]** switch. If you turn off the Power switch without pressing the **[RESET]** switch, backup of the game is not accurately done and the data may be damaged.

IN THE MAZE:

Press the **[SELECT]** button and the command menu will appear. Select **[QUIT]** to interrupt the adventure. Your characters and their location will be saved in the maze, and you will return to the City of Llylgamyn. At this point, follow the above directions for "IN THE CITY OF LLYLGAMYN."

RESTARTING THE GAME

You may restart your adventure from two places depending on where you left your characters. To restart your game, follow the steps below.

FROM THE CITY OF LLYLGAMYN:

If you left the game in the City of Llylgamyn, you will resume your adventure here. Go to Gilgamesh's, regroup your party, and venture off into the maze.

FROM THE MAZE:

If you quit the game while your party was in the maze, select the **[RESTART AN OUT PARTY]** option at the Edge of Town. A list of characters who are currently on expedition will appear. The adventure will restart when you select one character from the party. Soon you and your party will be in Camp ready to resume your journey. Should you accidentally press the **[RESET]** button during play, you may follow these same steps to get back into the fun.

REFERENCE SECTION

GOOD LUCK ON YOUR JOURNEY (AND OTHER THINGS YOU NEED TO KNOW)

Throughout the previous pages, Wizardry was explained to you as quickly as possible (after all, you want to get into the game... not just spend your day reading a manual). If you are confused on some areas while playing the game, you may reference them in the sections which follow for a detailed explanation.

Add.....	40	Creating Characters.....	17, 25-35
Adventurer's Inn.....	15, 21, 42	Deleting a Character.....	38
Adventuring.....	15, 18, 20, 46-48	Demised.....	43
Age.....	37	Disarm.....	21, 51
Agility.....	31	Dispel.....	50
Alignment.....	29, 36	Divvy Gold.....	41
Alignment and Profession Chart.....	29	Drop.....	41
Armor Class (A.C.).....	37	Dwarfs.....	26
Ashed.....	43	Edge of Town.....	15, 18, 45
Asleep.....	38	Elite Classes.....	32, 34-35
Boltac's Trading Post.....	15, 18, 44	Elves.....	26
Bonus points.....	30	Encounters.....	20-21, 49, 50
Buy.....	44	Ending Your Session.....	22, 48
Calfo.....	51	Entering the Maze.....	20, 47
Camp.....	18, 46, 47	Equip.....	18, 40, 46-47
Cast Spell.....	46	Experience Points.....	21, 37, 49-50
Cemetery.....	52	Fight.....	49-50
Change Class.....	39	Fighter.....	26, 35
Change Name.....	39	Gaining an Experience Level.....	42
City of Llylgamyn.....	13-15, 25-45	Gaining Experience Points.....	42, 50
Class.....	30-35	Gilgamesh's Tavern.....	15, 40-41
Class and Alignment Chart.....	36	Gnomes.....	28
Cleric.....	26-29, 33	Gold.....	37, 50
Cleric Spells.....	60-65	Healing.....	42-43 (see Spells)
Combat.....	20-21, 49-50	Hints for Adventure.....	53
Combat Options.....	50	Hit Points (H.P.).....	37, 49
Controller Operation.....	8-9	Hobbits.....	28
Control Pad.....	8		

Hot Line.....	Call ASCII, (714) 373-2054	Resetting Game.....	66
Humans.....	26	Restart Game.....	22
I.Q.....	31	Restart an Out Party.....	22
Identify.....	44, 46	Resurrection.....	43
Inspect.....	36-37, 40, 46, 51	Roster.....	36
Intelligence.....	31	Run.....	50
Leave Game.....	22, 45, 47-48	Samurai.....	32
Levels (experience, maze and spell).....	37, 48	Search.....	48
Lord.....	35	Secret Doors.....	47
Lost.....	43	Sell.....	44
Luck.....	31	Set Timer.....	48
Mage.....	33	Spells.....	46, 50, 54-65
Mage Spells.....	55-59	Start Game.....	10
Magic Points (M.P.).....	38	Statistics.....	31
Mapping (the maze).....	19-20, 47	Status.....	37, 49
Maze.....	18-20, 45-48	Strength.....	31
Mission.....	7	Take Back.....	50
Monsters.....	18, 49-50	Temple of Cant.....	15, 21, 43
Naming a Character.....	25	Thief.....	33
Ninja.....	34	Tithe.....	43
Opening Doors.....	8	Trade.....	41
Paralyzed.....	15, 43	Training Grounds.....	17, 25-39, 45
Parry.....	50	Treasure Chests.....	51
Party.....	17, 40	Uncurse.....	44
Petrified.....	15, 43	Unknown Items.....	44
Piety.....	31	Use Item.....	46, 50
Poisoned.....	43	Vitality.....	31
Pool Gold.....	41, 44	Wizard.....	35
Profession.....	30-35		
Quick Start.....	12		
Quit.....	48		
Questions & Answers.....	66		
Race.....	26		
Read.....	41		
Remove.....	40		
Reorder.....	12, 18, 46		
Reset Button.....	22		

T HE TRAINING GROUNDS: CREATING A CHARACTER

WIZARDRY characters are unique individuals with strengths, faults and special abilities just like you. To develop your party members, select **[CREATE]**. A maximum of six characters can be involved in an adventure; however, you can create up to 20 characters to choose from. When creating members of the party, try to get a good balance. It is wise to create three members of the fighting variety (**FIGHTER**, **SAMURAI**, **LORD**), two magic users (**CLERIC**, **MAGE**, **WIZARD**) and a **THIEF**.

NAMING THE CHARACTER

As you begin to create your character, **WIZARDRY** will ask you for the character's name (**PHOTO 1**). A character's name may contain up to eight letters. You can select between upper and lower case letters by pressing the **[SELECT]** button on your Control Pad. Select the letter with the Control Pad and enter it with the **[A]** button. You



PHOTO 1. Entering the names at the Training Grounds.

may erase any mistake with the **[B]** button. When you are finished, select **[RET]**. **WIZARDRY** will then ask you, "Do you really want to create this character?" If you do, select **[Y]**. If you enter the name of a character that has already been created, **WIZARDRY** will display that character's profile.

D

ETERMINING THE CHARACTER'S RACE

After you have entered the character's name, you must choose his or her race. Each race has its own strengths and weaknesses, and these traits are useful in determining a character's profession.

HUMANS

Humans are average, excelling at nothing and having no particular weakness except for a decided lack of piety.

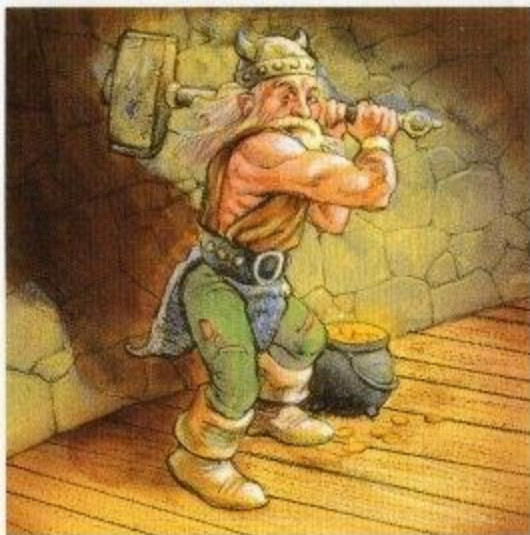
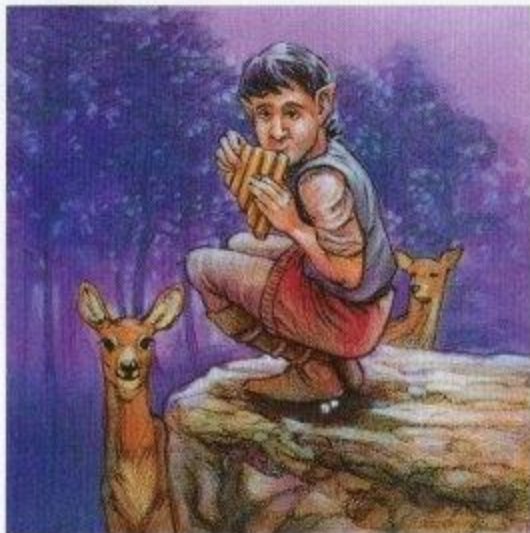


ELVES

Elves are intelligent and pious, but not too robust. They are excellent spell casters and can become excellent Wizards, Clerics and Mages.

DWARFS

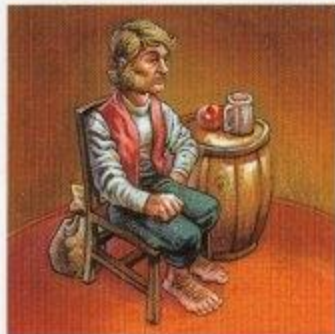
Dwarfs are strong and hardy, and can become the best fighters.





GNOMES

Gnomes are pious and agile and can excel in just about every class. Gnomes can even qualify for a Samurai profession if they receive 18 bonus points.



HOBBITS

Hobbits are agile and extremely lucky. A Hobbit thief is great at disarming the many trapped treasure chests found in Wizardry.



D

ETERMINING THE CHARACTER'S ALIGNMENT

With your character's race selected, you must now determine his or her alignment. Alignment is the character's general ethical outlook on life, and can be either good, neutral or evil.

GOOD: Good characters would go out of their way to help an old lady cross the street, even if it meant jumping over parked (and moving) cars.

NEUTRAL: Neutral characters would help an old lady cross the street if they were traveling in the same direction.

EVIL: Evil characters would help an old lady cross the street only if she offered several gold pieces in advance.

The alignment you choose for your characters must be compatible with the class or profession you wish your characters to enter. For example, a Samurai may not be evil. Furthermore, good and evil characters cannot travel together; neutral characters can travel with either alignment.

Therefore, when you create your party, think of its alignment. For example, if you create an evil character, don't bother to create any good characters.

ALIGNMENT AND PROFESSION CHART

(Y = YES, N = NO)

	GOOD	NEUTRAL	EVIL
FIGHTER	Y	Y	Y
MAGE	Y	Y	Y
CLERIC	Y	N	Y
THIEF	N	Y	Y
WIZARD	Y	N	Y
SAMURAI	Y	Y	N
LORD	Y	N	N
NINJA	N	N	Y

SELECTING YOUR CHARACTER'S PROFESSION

Once you have selected your character's alignment, you will be shown the character's window (PHOTO 2). Your character has six basic statistics which are based on the race you selected for the character. Additionally, your character has been awarded bonus points. When you add these extra points to the statistics, your character may qualify for one or

more professions. The amount of the bonus points your character receives is random, just like rolling dice. You may continue to create characters until you come up with a bonus point total high enough to create a specific professional.

To distribute the bonus points, move the pointer with the Control Pad to the desired statistic. Press the

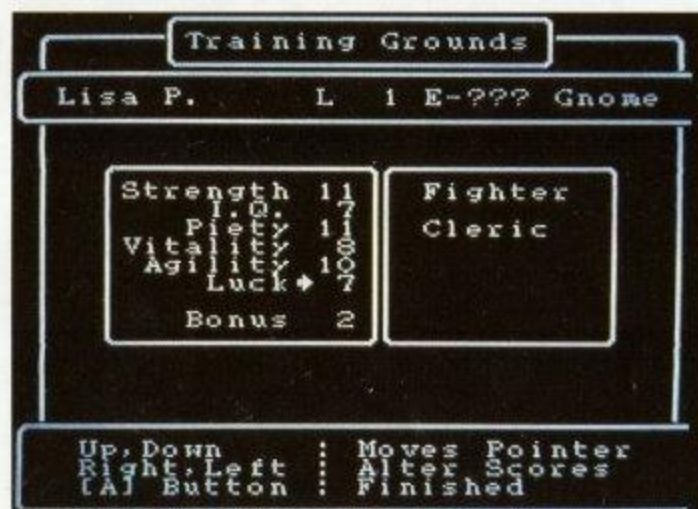


PHOTO 2. The left side shows the six statistics and the bonus points. The profession is shown to the right when the statistics change.

Control Pad to the sides to add or subtract points. When you have used up all of the bonus points, select a class with the Control Pad, and press [A] to set it.

STRENGTH: Indicates the character's mettle and skills in combat. If you are creating a Fighter, you may want to give your character as much strength as possible.

I.Q.: Indicates the character's general intelligence about life in the dungeon, and influences the Mage's ability to cast and learn spells.

PIETY: Indicates the degree of pious strength the character possesses, and influences the Cleric's ability to cast spells and revive characters.

VITALITY: Indicates the life force of the character, and affects the amount of hit points the character receives. When a character's vitality reaches zero, the character is retired from the game.

AGILITY: Indicates the character's speed. Agility also helps the Thief to disarm and find traps on treasure chests.

LUCK: Comes to your character's aid in many mysterious ways.

There are minimum required statistics for each of the eight professions. When distributing your bonus points, you should keep these minimum numbers in mind. For example, a Fighter needs a strength of 11. If you add enough bonus points to strength, the option to become a Fighter will appear in the window.

Once you have distributed the bonus points, and selected your character's class, **WIZARDRY** will ask you if you wish to keep the character. If so, the character will be listed in the roster. You should create five more characters to join this one in an adventure. Up to 20 characters may be listed on the roster, and unnecessary characters may be deleted. An explanation of each of the classes follows.



SAMURAI

A combination of Fighter and Mage. These folk are fantastic warriors, and can use most Fighter weapons and armor. Of all the classes, Samurai's hit points tend to be the highest. At the fourth level of ability, Samurai slowly begin to learn Mage spells. Samurai must have at least 15 strength, 11 I.Q., 10 piety, 14 vitality and 10 agility.

MAGE

The sorcerer. Mages have poor hit points, can use a limited amount of weapons, and can wear no armor except for robes! They cast Mage spells, including the dreaded Tiltwait. Mages must have at least 11 I.Q.



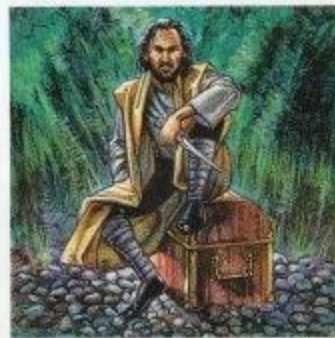
CLERIC

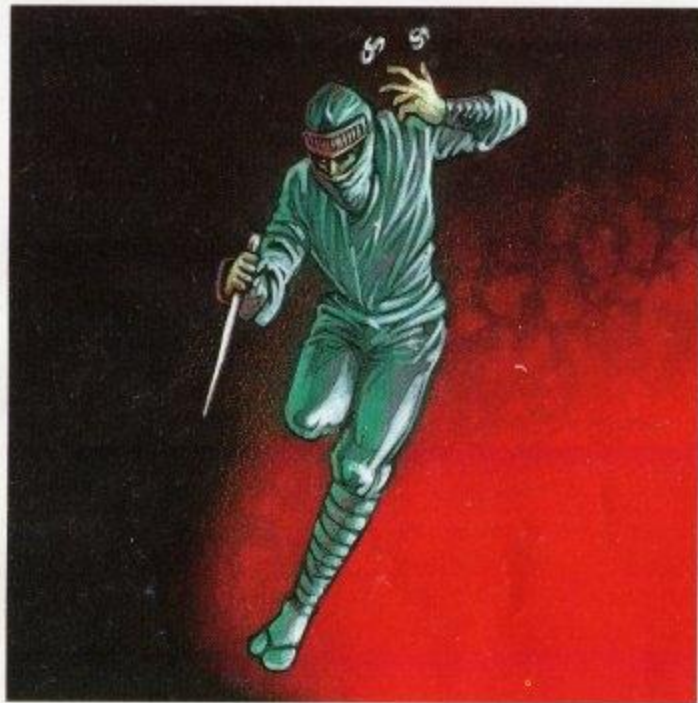
The dedicated one. Clerics have fairly high hit points, but do not fight as well as Fighters. They must use specially consecrated weapons, and can wear only light body armor. They can cast Cleric spells as well. Clerics must have at least 11 piety.



THIEF

The artful dodger. Thieves have average hit points. Their weapons are limited to daggers and short swords; they can wear leather armor and use a small shield. Thieves are good at detecting traps and opening treasure chests. Thieves need at least 11 agility.





NINJA

A super-devastating fighting machine. Ninjas can use the same weapons and armor as a Fighter, but work best without any. When fighting with their bare hands, Ninjas sometimes defeat the strongest opponent with just one blow! As long as they disdain armor, their great training gives them a lower and lower armor

class. Ninjas earn average hit points, but learn no spells, and like a Thief, Ninjas are skilled at picking the traps on treasure chests. Ninjas must have at least 15 strength, 17 I.Q., 15 piety, 16 vitality, 15 agility and 16 luck.

WIZARD

A combination of a Cleric and a Mage, with advantages and disadvantages of both. Wizards have average hit points, can wear leather armor and use Clerics' weapons. They can cast both Mage and Cleric spells, and are capable of identifying unknown items the party finds in the maze. Wizards must have at least 12 I.Q and 12 piety.



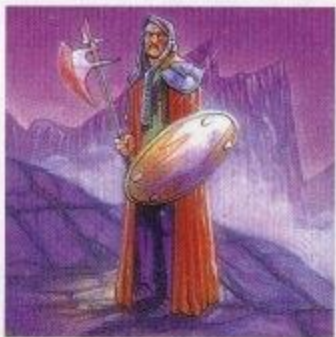
FIGHTER

The basic person-at-arms. Fighters have high hit points and can use almost any armor and weapon. Fighters must have at least 11 strength.



LORD

A combination of Fighter and Cleric. They have the hit points and abilities of Fighters, but at the fourth level of ability they gain the ability to cast Cleric spells and to dispel. They can wear most Fighter armor and use most Fighter weapons. Lords must have at least 15 strength, 12 I.Q., 12 piety, 15 vitality, 14 agility and 15 luck.



THE TRAINING GROUNDS: OTHER OPTIONS

INSPECT

Inspect allows you to view a character's statistics. When you select this option, a roster of characters will be displayed. Select a character, and its window will appear (PHOTO 1). At this time, you may read the list of spells the character has learned.



PHOTO 1. To Inspect a character, use the character window.

ALIGNMENT AND CLASS

THE FOLLOWING CODES MAY APPEAR FOR A CHARACTER'S

ALIGNMENT AND CLASS.

G	GOOD	FIG	FIGHTER	WIZ	WIZARD
N	NEUTRAL	MAG	MAGE	SAM	SAMURAI
E	EVIL	CLE	CLERIC	LOR	LORD
THI	THIEF	NIN	NINJA		

LEVEL (L) AND EXPERIENCE POINTS (E.P.)

When your characters defeat a group of monsters, their experience points are increased. "E.P." reflects the total number of experience points the character has earned. The experience level (L) of the character is increased when a character has earned enough experience points to gain a level. A character's experience level reflects the character's general level of ability for his or her profession.

AGE

Just like you, your characters have an age, and show the wear and tear of it. After age 50, a character becomes more and more feeble, and tends to lose his or her vitality.

GOLD

Your characters begin life with only a small amount of gold, but as they defeat monsters and discover treasure chests, their wealth grows. Gold reflects the amount of gold pieces that character possesses.

ARMOR CLASS (A.C.)

The armor class (A.C.) reflects how well the character is protected from physical attacks while in combat. The lower the number, the better protected the character is. Bare skin has an A.C. of 10 while a Sherman tank would have an A.C. of -10. As your characters acquire better armor, the A.C. will be lowered.

HIT POINTS (H.P.)

Hit points reflect the health of your character. Each time your character is injured, points are deducted. When the hit points reach zero, the character expires. Hit points are displayed in two sections, 8/8. The number to the left is the present value. The number to the right reflects the value when the character is in full health. Hit points can be recovered by resting at the Adventurer's Inn or magical means.

STATUS

Status is a general description of the character's health. Normally a character's status will be OK. However a character may become asleep, afraid, paralyzed, poisoned, petrified, out, expired, ashed or lost.

If your character's status is "OUT," he or she is in the maze. Select [RESTART AN OUT PARTY] to recover out characters.

MAGIC POINTS (M.P.)

Magic Points, or spell points, show your character's current magical power. You'll see a series of seven zeros for the Cleric. The Mage is represented by the number four followed by six zeros. Your characters may have higher numbers depending on their level and class.

There are two basic categories of spells: Mage and Cleric. Within each Cleric and Mage category, there are seven levels of spells, from weak level 1 spells to the powerful (to put it mildly) level 7 spells. For a character to be able to cast a particular spell, he or she needs to have that spell in his or her spell book and a magic point with which to cast it. Each number seen while inspecting your character represents the amount of magic points a character has in that level and the number of spells that character may cast.

So, in order to cast a Halito, the spell must be in the character's book and there must be a first level magic point available. When a spell is cast, the character loses a magic point from the appropriate category and level. However, the character retains knowledge of the spell. To regain magic points, the character must rest in the Adventurer's Inn. Eventually, as your characters gain experience levels, they will learn new spells and acquire more magic points.

When characters change class, they keep any spells that they've already learned. The magic points, however, will drop to a number equal the number of magic spells in that level. For example, if you have a Mage with 9 magic points of level one spells and you turn that character into a Fighter, the Fighter would have four magic points (since there are only four level one magic spells).

DELETE

If you have created characters you no longer wish to use, you may delete them using this option. Before Wizardry deletes a character, you

will be asked if you really want to delete (just in case).

Change Name allows you to give a character a new identity. When you change a character's name, you will enter it the same way as you did when you created the character.

Changing class allows your character to switch careers in mid-life. For example, this option is used when a character of a basic class, a Fighter, wishes to enter an elite class, a Ninja. If the Fighter's statistics qualify for that class, at least 15 strength, 17 I.Q., 15 piety, 16 vitality, 15 agility and 16 luck and an evil alignment, the option to

change class to a Ninja will be given. Your characters may change to any class they wish provided their alignments and statistics are right. When your character changes class, several changes will take place:

The age is increased.

The experience level returns to one.

The experience points become zero.

The statistics return to the minimum values for the character's race.

However, the value of the character's hit points will remain the same, and the character will retain knowledge of the spells he or she currently knows.



GILGAMESH'S TAVERN

After creating your characters, a party is formed at the tavern. Here you may inspect your characters, trade items and gold, equip items and read magic spells. You begin by adding members to the party.

ADD

When you select [ADD], the roster of characters available for adventure is displayed. Select your members by moving the Control Pad up or down the list. Press [A] to add a character to the party. When choosing characters for your party, remember to choose characters of **COMPATIBLE** alignment. Good and Evil characters will **NOT** travel together. However, neutral characters will travel with either alignment. Characters of incompatible alignments will disappear from the roster if you attempt to join them together. For example, if you choose a character of Good alignment, and there are Evil characters in the Tavern, all the Evil characters will disappear from the party. You may add characters who are not alive (or otherwise

distressed) to the party if you wish to recover them by magical means in the maze. When you have finished selecting your six party members, or if you press [B], the roster list will disappear.

REMOVE

When you wish to remove a character from your party, select [REMOVE].

INSPECT

Inspect lets you view a character's statistics. When a character is selected, the information about the character will be displayed. This display is the same as in the Training Grounds. However, your characters will have several new options.

EQUIP: Lets you select the weapons, armor and other items your character is to wear. Weapons and armor your characters possess but are not equipped with will be of no use to you in combat. To unequip an item, do not select it when asked to equip.

TRADE: Allows the characters to exchange items amongst themselves. When you select [TRADE], a list of characters he or she may trade with is displayed. To the right of each character is the amount of items the character is currently carrying. Select the item you wish to trade, and the deal will be complete. Items which are equipped must be unequipped before they can be traded.

POOL GOLD: Gives all of the party's gold to one party member.

READ: Allows you to read a character's spell books to see what spells he or she has learned.

DROP: Allows you to drop unwanted items from the character's possession. Equipped items must be unequipped before they can be dropped.

DIVVY GOLD

Divvy Gold pools the gold belonging to the party, and then evenly splits it up between the party members.

LEAVE

Leave exits the tavern.



T

HE ADVENTURER'S INN: GAINING A LEVEL AND HEALING

HEALING UP

When your characters return from the dungeon, they are often worn, and show the signs of battle. Resting characters here will recover lost hit points for a fee, and magic points can be recovered for free. After entering the Inn, select the member you wish to rest and the room you wish him or her to rest in. The Stable is free, but it recovers only magic points. It does not recover lost hit points. In the other rooms, hit points are restored for a fee during each week of rest. Recovery is faster in the more expensive rooms. Continue to rest until all of the hit points are restored, or the character's gold pieces are used up. You may press [B] to exit early. Remember that age is important in **WIZARDRY**. As your characters rest in bed, healing and the like, their clock is ticking away.

GAINING AN EXPERIENCE LEVEL

After your characters have tasted their first few battles, they may earn enough experience points to gain a level. When a character makes a level, several things happen:

The maximum value of the hit points increases.

The statistics change (either up or down).

Magic users may gain more spells or magic points.

If your characters should not have enough experience points to gain a level, the points necessary to reach the next level will be displayed.

T

HE TEMPLE OF CANT

When the party returns to the City of Llylgamyn from the maze, the demised, paralyzed or similarly distressed characters are separated from the party by the City of Llylgamyn guards and brought to the Temple. Characters who are poisoned are cured as soon as they enter the City of Llylgamyn. Permanently lost characters are buried.

When you enter the Temple, the names of the troubled characters are displayed. Select a character to cure or resurrect. The tithe, or fee, required will be listed and you will be asked who will pay it. Once you have selected the character to pay, the Temple Clerics begin their work.

Unless the character is extinct or in ashes, he or she will recover for certain. When resurrecting from extinction or ashes, the character may recover if he or she has a sufficient life force. However, the character will have only one hit point when resurrected.

Unfortunately, the Clerics may fail. Should they botch the job with an expired character, he or she will turn to ashes. If an ashen character is not resurrected, he or she is lost, and may not be restored by any means.



BOLTAC'S TRADING POST

After your party is formed, weapons and armor for the expedition can be purchased here. The following services are provided for your characters:

POOL GOLD

Pool Gold transfers all of the party's gold to the character who is shopping.

BUY

When you select [BUY], eight items and their prices will appear on the screen. Other items can be seen by scrolling downward with the Control Pad. When you see an item you would like to purchase, press [A]. Next, move the arrow which appears up or down until it points to the desired item. Press [A] again to purchase the item.

SELL

You can sell items to Boltac for half of the purchase price (after all, he has to make a profit). To sell items, select them as you would when buying items.

UNCURSE

Occasionally, one of your party members will get "stuck" with a cursed item. When this happens, your character cannot get rid of the item! Unfortunately, most cursed items have bad side-effects. For a fee, Boltac will remove the cursed item, and take it forever!

IDENTIFY

Boltac will identify items which your characters find in the maze. Boltac does this for a fee, of course. Your Wizard may be able to provide this service for free.



THE EDGE OF TOWN

After forming the party and buying their equipment, the adventure begins. The Edge of Town offers the entrance to the **WIZARDRY** dungeon and several other options.

TRAINING GROUNDS

At the Training Grounds, you can create, delete and inspect characters. You may also change a character's name or class.

MAZE

Here the characters can enter the maze and prepare for combat in Camp. To enter the maze, select [MAZE].

RESTART AN OUT PARTY

When you have [QUIT] the game in the maze or if you accidentally pressed the [RESET] switch, you may resume your adventure with this option.

LEAVE GAME

When your characters have had a full day in the dungeon, you may leave the game using this option.

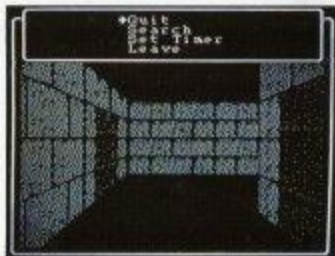
Turn the power off while pressing the [RESET] switch in order to have an accurate backup of your characters' data.

CASTLE (CITY OF LLYLGAMYN)

Selecting this option returns your characters to the City of Llylgamyn.

MAZE OPTIONS: QUIT, SEARCH AND SET TIMER

While in the maze, pressing the [SELECT] button causes the following options to appear:



Maze options

QUIT: Quit ends the adventuring for the session and saves the party in the maze. The screen will return to the City of Llylgamyn. To resume your adventure, select [RESTART AN OUT PARTY] at the Edge of Town.

SEARCH: Search examines the area the party occupies for characters that have been left deceased or otherwise in the maze. The search extends only for the few squares the party is near, and will not search through walls or on the other side of doors or walls.

SET TIMER: Setting the timer changes the length of time a message is shown on the screen. The lower the number, the faster the message is shown.

COMBAT: HACK-SLASHING FUN!

When monsters are encountered in the maze, combat will follow!

(PHOTO 1) On the screen you will see the image of the first attacking monster. The monster's description will appear at the top of the screen. If more than one group of monsters are attacking, the description and the image of the first monsters will appear. As soon as these monsters are defeated, the description and the image will change. The second group of monsters will then appear in their place. Additionally, **WIZARDRY** will show you the number of monsters you are up against. The number to the left of the monsters shows the amount of monsters present. The number to the right, on the other hand, shows you how many monsters are active. For example, five monsters may be present, but three may have been put to sleep. In this case, only two would be active.

Sometimes you may be ambushed by rude monsters or you may surprise

unsuspecting creatures. In such cases the attack is one-sided. If the monsters surprise you, they may hit your characters at will for one round, but may not cast any spells. The same holds true if you surprise the monsters. When you meet a friendly group of monsters, you may fight the monsters or leave them in peace. When selecting your route, remember your party's alignment. Good characters would welcome a truce. Evil characters, on the other hand, would likely decline a friendly handshake, opting for the monsters' gold instead.



PHOTO 1. When the Status is OK, the highest hit point value of the elected command is displayed.

CAMOUFLAGE!!!

Some monsters can hide their secret identities. To find the true nature of the monster you're fighting, cast the Latumapic spell when you first enter the dungeon. This will identify each monster, revealing its true identity.

SETTING YOUR CHARACTER'S COURSE

In combat, the actions of the party are chosen from the following commands. When the actions of the entire party have been decided, combat begins and the results are displayed. The status of the party is rewritten with each round of combat. Members who are deceased or unable to fight are moved to the rear of the party. When the monsters are defeated, the experience points and gold pieces earned by the party members are displayed.

FIGHT: Attacks the enemy with weapons. Only the first three members of the party may fight.

PARRY: Protect yourself with weapons and armor.

SPELL: Casts a combat spell (see list at the end of this manual). This may not be used in a surprise attack.

DISPEL: Can only be used by a Cleric or a high-ranking Wizard. Dispel destroys animated monsters of the supernatural variety (skeletons, ghosts, etc.).

USE ITEM: Allows the character to use magical items, such as potions or scrolls, which are in the character's possession.

RUN: Attempts to take the party on a run away from the monsters and the encounter. If only one member selects this option, the entire party will run. Escape, however, is not guaranteed.

TAKE BACK: Erases all previous character combat selections, and allows you to begin choosing the characters' options from the beginning.

AFTER COMBAT

TREASURE CHESTS

After your characters have defeated the monsters, they may find a treasure chest. Should your characters find one (PHOTO 1), they may do the following:

INSPECT: Allows a character, usually a Thief, to inspect the chest for a trap. When the inspecting member has been selected, the name of the trap he or she believes it to be is shown. Unfortunately, the character's selection may not always be right. If your character is not careful, the trap may be set off by mistake.

CALFO: Allows a Cleric to cast the Calfo spell. This is a level two spell, and will detect the trap on a chest with a 95% accuracy.

DISARM: When you believe you know what the trap is, your Thief may disarm the trap. When the trap is disarmed, its goodies are distributed among the party members.

OPEN: If you believe there is no trap on a treasure chest, you may simply open it (and hope for the best).

LEAVE ALONE: If your characters don't want the loot inside of the chest, or if the trap seems too big to overcome, you may leave the chest alone.



PHOTO 1. A treasure chest.

T HE CEMETERY

At times, the entire party may be expired. In that case, you may form another party of less than five members to retrieve the deceased party. With this new party, return to the spot where the party was destroyed, press the [SELECT] button, [SEARCH] for the members and rescue them. Occasionally, you may find that some characters have been moved from the original spot of their demise. At other times, some of the characters' gold and armor may be missing. When characters are left in the maze, demised and unguarded, monsters tend to hide their bodies and pilfer their belongings.



H INTS FOR ADVENTURE

In the early stages of your adventure, it is not a good idea to be overaggressive in combat. Fight a few battles, then go back to Llylgamyn to heal up. This is the easiest way to build up your characters in the first few levels without encountering a fatal circumstance.

Map your adventure! Making an accurate map is a vital part of all **WIZARDRY** adventures. Without a map, you may find your party meandering aimlessly throughout the maze. This could lead to disaster or even worse—a party lost FOREVER!

Try out all the spells. Some spells that seem ineffective on lower level monsters may actually eliminate a higher level monster.

Try to adhere to your characters' alignment. For example, if a character is of GOOD alignment, he or she should leave friendly groups of monsters alone.

When in DARK areas, using your [A] button to move forward may be useful. This may help you discover many hidden doors often found in the dark.

The sleep spell (Katino) works well when cast upon most monsters. It will not eradicate them, but may allow you to inflict more damage and prevent monsters from doing the same.

Use your Dumapic spell to check your map constantly. You may find many nasty tricks designed to throw your party off course.

MAGICAL SPELLS

Spells are divided into two groups, Mage and Cleric. Mage spells are primarily designed for attack, and are learned by the Mage, Samurai and Wizard. Cleric spells are primarily for defense and cure and are learned by the Cleric, Lord and Wizard.

Each group of spells is divided into seven levels, each representing a higher power. A character begins learning the level one spells, and as he or she gains experience levels, new, more powerful spells are learned. Additionally, the number of times the spell can be cast, or magic points, increases (up to a maximum of nine).

When selecting [SPELL] in Camp or combat, the level of the spell appears (PHOTO 1). The level of the spell may be switched with the up/down of the Control Pad, and the Mage/Cleric spells by the left/right of the button. When the spells are displayed, select the spell with the arrow by pressing the [A] button.



PHOTO 1. The figure in the parentheses shows the number of times the spells of that level can be used.

MAGE SPELLS

LEVEL 1 MAGE SPELLS

SPELL NAME: HALITO
TRANSLATION: LITTLE FIRE
CAST WHEN: Combat
AFFECTS: 1 Monster

HALITO causes a flame ball about the size of a baseball to strike a monster, inflicting from one to eight hit points of damage.

SPELL NAME: MOGREF
TRANSLATION: BODY IRON
CAST WHEN: Combat
AFFECTS: Caster

MOGREF reduces the spell caster's AC (Armor Class) by two points. This protection lasts for the rest of the encounter.

SPELL NAME: KATINO
TRANSLATION: BAD AIR
CAST WHEN: Combat
AFFECTS: 1 Group

KATINO causes most of the monsters in a group to fall asleep. KATINO only affects normal animal or humanoid monsters, and the duration of its effect is inversely proportional to the power of the monster. Sleeping monsters are easier to hit and successful attacks do double damage!

SPELL NAME: DUMAPIC
TRANSLATION: CLARITY
CAST WHEN: Camp
AFFECTS: Entire Party

DUMAPIC grants you insight into your party's position in the Maze: the exact displacement from the stairs leading to the City of Lylgamyn (vertically, North and East), and the direction you are currently facing.

LEVEL 2 MAGE SPELLS

SPELL NAME: DILTO
TRANSLATION: DARKNESS
CAST WHEN: Combat
AFFECTS: 1 Group

DILTO causes one group of monsters to be enveloped in darkness, which reduces their ability to defend themselves.

SPELL NAME: SOPIC
TRANSLATION: GLASS
CAST WHEN: Combat
AFFECTS: Caster

SOPIC causes the spell-user to become transparent. This makes him or her harder to see; thus the caster's AC is effectively reduced by four points during the rest of the encounter.

SPELL NAME: MELITO
TRANSLATION: LITTLE SPARKS
CAST WHEN: Combat
AFFECTS: 1 Group

MELITO sparks and does one to eight hit points of damage on each affected monster.

LEVEL 3 MAGE SPELLS

SPELL NAME: MAHALITO
TRANSLATION: BIG FIRE
CAST WHEN: Combat
AFFECTS: 1 Group

MAHALITO causes a fiery explosion to erupt amid a monster group, doing four to twenty-four hit points of damage.

SPELL NAME: MOLITO
TRANSLATION: SPARKS
CAST WHEN: Combat
AFFECTS: 1 Group

MOLITO causes sparks to fly about and do three to eighteen hit points of damage to about half the monsters in a group. While inferior in many respects to MAHALITO, MOLITO affects some monsters that are impervious to fire-based spells, and the monsters that are struck by the spell are less likely to be able to minimize its effects.

SPELL NAME: MORLIS
TRANSLATION: FEAR
CAST WHEN: Combat
AFFECTS: 1 Group

MORLIS causes one group of monsters to fear the party, thus reducing the effectiveness of their attacks. The efforts of MORLIS are comparable to a double-strength DILTO spell.

LEVEL 4 MAGE SPELLS

SPELL NAME: DALTO
TRANSLATION: BLIZZARD
CAST WHEN: Combat
AFFECTS: 1 Group

DALTO is a frigid version of MAHALITO, and inflicts six to thirty-six hit points of damage.

SPELL NAME: LAHALITO
TRANSLATION: TORCH
CAST WHEN: Combat
AFFECTS: 1 Group

LAHALITO is an "industrial-strength" version of MAHALITO, and inflicts five to thirty-six hit points of damage.

SPELL NAME: TZALIK
TRANSLATION: Showers of Sparks
CAST WHEN: Combat
AFFECTS: 1 Group

TZALIK causes a downpour of fiery sparks against the monsters with three to twenty-four hit points of damage.

LEVEL 5 MAGE SPELLS

SPELL NAME: MAMORLIS
TRANSLATION: TERROR
CAST WHEN: Combat
AFFECTS: All Monsters

MAMORLIS is an improved version of MORLIS that makes all of the monsters in an encounter fear the party, thus reducing the effectiveness of their attacks.

SPELL NAME: MAKANITO
TRANSLATION: DEADLY AIR
CAST WHEN: Combat
AFFECTS: All Monsters

SPELL NAME: MADALTO
TRANSLATION: FROST KING
CAST WHEN: Combat
AFFECTS: 1 Group

SPELL NAME: ZILWAN
TRANSLATION: DISPEL
CAST WHEN: Combat
AFFECTS: 1 Monster

LEVEL 6 MAGE SPELLS

SPELL NAME: LADALTO
TRANSLATION: ICE STORM
CAST WHEN: Combat
AFFECTS: 1 Group

SPELL NAME: LAKANITO
TRANSLATION: VACUUM
CAST WHEN: Combat
AFFECTS: 1 Group

SPELL NAME: MASOPIC
TRANSLATION: CRYSTAL
CAST WHEN: Combat
AFFECTS: Entire Party

MAKANITO asphyxiates most air-breathing monsters with less than forty hit points. This is an all or nothing spell; if MAKANITO does not defeat a monster, that monster is undamaged by the spell.

MADALTO is a super-cooled DALTO that causes eight to sixty-four hit points of icy damage.

ZILWAN will dispel one monster of the supernatural variety.

LADALTO is a super high-powered MADALTO, and does thirty-four to ninety-eight hit points of damage to one monster group.

LAKANITO will defeat all the monsters in a group if they breathe air.

MASOPIC duplicates the "transparency" effects of SOPIC, but affects the entire party.

SPELL NAME: HAMAN
TRANSLATION: BEG
CAST WHEN: Combat
AFFECTS: Variable

LEVEL 7 MAGE SPELLS

SPELL NAME: MALOR
TRANSLATION: TELEPORT
CAST WHEN: Any time
AFFECTS: Entire Party

SPELL NAME: MAHAMAN
TRANSLATION: BESEECH
CAST WHEN: Combat
AFFECTS: Variable

SPELL NAME: TILTOWAIT
TRANSLATION: KA-BLAM!
CAST WHEN: Combat
AFFECTS: All Monsters

HAMAN is an unusual spell. It allows the caster to beg the gods for aid. Only thirteenth-level or higher characters may cast HAMAN, and doing so costs them a level of experience! If the gods decide to answer your plea, you will be given a choice of possible boons.

When cast in Combat, MALOR randomly teleports the party to another location on the same level. When cast in Camp, the caster can select his destination precisely. Teleporting outside the Maze, or into an area of solid rock, will have catastrophic results.

This more powerful version of HAMAN has the same costs and conditions of casting, but the boons that the gods grant are more valuable.

The effect of this spell is somewhat like the detonation of a small tactical nuclear weapon, and causes from ten to a hundred and fifty (150) hit points of damage to all the monsters opposing the party!

CLERIC SPELLS

LEVEL 1 CLERIC SPELLS

SPELL NAME: KALKI
TRANSLATION: BLESSINGS
CAST WHEN: Combat
AFFECTS: Entire Party

KALKI reduces the AC (Armor Class) of all party members by one point, and thus makes them harder to hit.

SPELL NAME: DIOS
TRANSLATION: HEAL
CAST WHEN: Any time
AFFECTS: 1 Person

DIOS restores from one to eight lost hit points to a party member. It will not bring the expired back to life.

SPELL NAME: BADIOS
TRANSLATION: HARM
CAST WHEN: Combat
AFFECTS: 1 Monster

BADIOS inflicts from one to eight hit points of damage upon a monster. It is the inverse of DIOS.

SPELL NAME: MILWA
TRANSLATION: LIGHT
CAST WHEN: Any time
AFFECTS: Entire party

MILWA causes a softly glowing magical light to accompany the party, illuminating more of the maze and revealing all secret doors. The light lasts only a short time.

SPELL NAME: PORFIC
TRANSLATION: SHIELD
CAST WHEN: Combat
AFFECTS: Caster

PORFIC lowers the AC of the caster by four points. The effects last for the rest of the combat.

LEVEL 2 CLERIC SPELLS

SPELL NAME: MATU
TRANSLATION: ZEAL
CAST WHEN: Combat
AFFECTS: Entire Party

MATU reduces the AC (Armor Class) of all party members by two points, and thus is a double-strength KALKI.

SPELL NAME: CALFO
TRANSLATION: X-RAY
CAST WHEN: Looting
AFFECTS: Caster

CALFO permits the caster to determine the nature of a trap on a chest with excellent reliability.

SPELL NAME: MANIFO
TRANSLATION: STATUE
CAST WHEN: Combat
AFFECTS: 1 Group

MANIFO causes some of the monsters in a group to become still as statues for one or more melee rounds. The practical effects are similar to KATINO; the monsters cannot attack, and physical attacks upon them are easier and do double damage.

SPELL NAME: MONTINO
TRANSLATION: STILL AIR
CAST WHEN: Combat
AFFECTS: 1 Group

MONTINO causes the air around a group of monsters to stop transmitting sound, thus preventing them from casting spells!

SPELL NAME: KANDI
TRANSLATION: LOCATION
CAST WHEN: Combat
AFFECTS: Caster

KANDI allows the caster to locate the approximate position in the maze of another character.

LEVEL 3 CLERIC SPELLS

SPELL NAME: DIALKO

TRANSLATION: SOFTNESS

CAST WHEN: Any time

AFFECTS: 1 Person

DIALKO cures paralysis and frees those under the spell of KATINO or MANIFO.

SPELL NAME: LATUMAPIC

TRANSLATION: IDENTIFY

CAST WHEN: Any time

AFFECTS: Entire Party

LATUMAPIC reveals the true names of the monsters you meet. The effect lasts for the rest of the expedition.

SPELL NAME: DIAL

TRANSLATION: CURE

CAST WHEN: Any time

AFFECTS: 1 Person

DIAL is an improved DIOS spell. It restores two to sixteen hit points to a party member.

SPELL NAME: BADIAL

TRANSLATION: WOUND

CAST WHEN: Combat

AFFECTS: 1 Monster

BADIAL is the inverse of DIAL. It inflicts two to sixteen hit points of damage upon a monster.

LEVEL 4 CLERIC SPELLS

SPELL NAME: LOMILWA

TRANSLATION: SUNBEAM

CAST WHEN: Any time

AFFECTS: Entire Party

Like MILWA, LOMILWA causes a softly glowing magical light to accompany the party, illuminating more of the maze and revealing all secret doors. The effects of LOMILWA, however, last for the duration of the expedition.

SPELL NAME: BAMATU

TRANSLATION: PRAYER

CAST WHEN: Combat

AFFECTS: Entire Party

BAMATU is a double-strength MATU spell. It reduces the AC of each party member by four points for the duration of the combat.

SPELL NAME: LITOKAN

TRANSLATION: FLAMES

CAST WHEN: Combat

AFFECTS: 1 Group

LITOKAN causes a pillar of flame to strike a group of monsters, doing three to twenty-four hit points of damage to each.

SPELL NAME: LATUMOFIS

TRANSLATION: CLEANSE

CAST WHEN: Any time

AFFECTS: 1 Person

LATUMOFIS removes the effects of poison.

SPELL NAME: MAPORFIC

TRANSLATION: BIG SHIELD

CAST WHEN: Any time

AFFECTS: Entire Party

MAPORFIC is an improved version of PORFIC that lasts for the duration of the expedition. This is the best overall defensive spell.

LEVEL 5 CLERIC SPELLS

SPELL NAME: DIALMA
TRANSLATION: BIG CURE
CAST WHEN: Any time
AFFECTS: 1 Person

DIALMA is an improved DIAL spell. It restores three to twenty-four hit points to a party member.

SPELL NAME: BADIALMA
TRANSLATION: BIG WOUND
CAST WHEN: Combat
AFFECTS: 1 Monster

BADIALMA is an improved BADIAL spell. It inflicts three to twenty-four hit points of damage upon a monster.

SPELL NAME: DI
TRANSLATION: LIFE
CAST WHEN: Camp
AFFECTS: 1 Person

DI attempts to resurrect a deceased character. There is a chance that the spell will fail. If successful, the restored character will have but one hit point. DI cannot resurrect a character who is in ashes, and if it fails, will turn an expired character into ashes. This spell is not as effective as the one cast by the Clerics of the Temple of Cant.

SPELL NAME: BADI
TRANSLATION: EXTINCTION
CAST WHEN: Combat
AFFECTS: 1 Monster

BADI attempts to give the target a heart attack. If successful (and the target must have a heart for this to be so!), the monster is defeated.

LEVEL 6 CLERIC SPELLS

SPELL NAME: LORTO
TRANSLATION: BLADES
CAST WHEN: Combat
AFFECTS: 1 Group

LORTO causes sharp blades to slice through a group, causing six to thirty-six hit points of damage to each monster in that group.

SPELL NAME: MADI
TRANSLATION: RESTORE
CAST WHEN: Any time
AFFECTS: 1 Person

MADI totally restores the recipient to perfect health, so long as he or she is not deceased or worse. It is important to recognize that in the world of Wizardry, there are things worse than extinction.

SPELL NAME: MABADI
TRANSLATION: MAIMING
CAST WHEN: Combat
AFFECTS: 1 Monster

MABADI strips the target monster of all but a few of its hit points.

SPELL NAME: LOKTOFEIT
TRANSLATION: RECALL
CAST WHEN: Combat
AFFECTS: Entire Party

LOKTOFEIT causes all party members to be teleported back to the City of Llylgamyn, minus all their equipment and most of their gold. There is a very good chance this spell will fizzle.

LEVEL 7 CLERIC SPELLS

SPELL NAME: MALIKTO
TRANSLATION: WRATH
CAST WHEN: Combat
AFFECTS: All Monsters

MALIKTO causes fiery meteors to descend upon all the monsters, inflicting from twelve to seventy-two points of damage upon each.

SPELL NAME: KADORTO
TRANSLATION: REBIRTH
CAST WHEN: Camp
AFFECTS: 1 Person

KADORTO restores the expired to life, even those reduced to ashes. It also restores all of the recipient's hit points. As with DI, there is a chance that KADORTO will fail. If a character who is in ashes fails to be resurrected by KADORTO, he or she will be lost forever.

QUESTIONS AND ANSWERS

Q) How can I keep my characters from aging so much when I use the Adventurer's Inn to heal them?

A) Have only your Cleric stay in the Stables. This only ages him one day and costs no gold. After he's healed, go to the maze and use your Cleric's healing spells to restore your remaining characters' Hit Points. Bring your other characters to the Stables when they are about to raise a level. You will be able to raise them 365 levels and only gain one year in age!

Q) I have created my party of characters, but I'm not certain what items I should buy for them from Boltac's.

A) For starters, any fighting character (Fighter or Samurai) should carry a Long Sword, Body Armor, Iron Shield, Gloves of Copper, and a Helm. You should have an Anointed Flail, Iron Shield and Body Armor for the Cleric and Padded Leather and Small Shield for the Wizard. The Thief should have the Blade of Biting, Padded Leather and Iron Shield. The Mage is not really a fighting character, and only needs to wear Robes. First of all, you will need more money to purchase all the items you need when starting out. There are ways to multiply your gold; however, we cannot tell you everything. That you'll have to learn on your own.

Q) How can I start the game over from the beginning? I'd like the information to be just like it was when I brought it home.

A) First, you want to delete all of the characters you have created by using the [DELETE] function in the Training Grounds.

Secondly, after you have deleted them, choose the [DELETE] function one more time. The game will then ask you if you wish to "Reset the Backed-up Data." If you say "Yes" the game will be reset back to its original form.

Q) Can a character change its Alignment?

A) Yes, but only if a character goes against its characteristics.

Q) How is the party teleport spell "Malor" used?

A) When casting Malor, Wizardry will ask you to input the direction your party wishes to travel. Input the exact number of spaces North, South, East or West your party will travel from the party's current location. Then input how many floors Up or Down you wish to go.

Q) What is the quickest way to build up experience points in the early course of the game?

A) Good Ol' Murphy's Ghost will continue to appear in a specific location on the first floor. Every time you defeat this monster, your characters will gain a total of 4450 E.P.

Q) How come it seems that I cannot make a Ninja or a Lord?

A) The Ninja, Lord and other elite classes can take some time and patience to achieve. A character must usually learn 18-25 experience levels before becoming an elite class.

Q) Are there any secrets or hidden levels in Wizardry?

A) Rumor has it that a Demon Lord resides somewhere on the 6th floor.

COMPLIANCE WITH FCC REGULATIONS

This equipment generates and uses radio frequency energy and if not installed and used properly, that is, in strict accordance with the manufacturer's instructions, may cause interference to radio and television reception. It has been type tested and found to comply with the limits for a Class B computing device in accordance with the specifications in Subject J of Part 15 of FCC Rules, which are designed to provide reasonable protection against such interference in a residential installation. However, there is no guarantee that interference will not occur in a particular installation. If this equipment does cause interference to radio or television reception, which can be determined by turning the equipment off and on, the user is encouraged to try to correct the interference by one or more of the following measures:

- Reorient the receiving antenna
- Relocate the NES with respect to the receiver
- Move the NES away from the receiver
- Plug the NES into a different outlet so that Control Deck and receiver are on different circuits.

If necessary, the user should consult the dealer or an experienced radio/television technician for additional suggestions. The user may find the following booklet prepared by the Federal Communications Commission helpful:

How to Identify and Resolve Radio-TV Interference Problems.

This booklet is available from the U.S. Government Printing Office, Washington, DC 20402, Stock No. 004-000-00345-4.

LIMITED WARRANTY

ASCII Entertainment Software, Inc. (ASCII) warrants to the original purchaser of this ASCII software product that the medium on which this computer program is coded is free from defects in materials and workmanship for a period of ninety (90) days from the date of purchase. This ASCII software program is sold "as is," without express or implied warranty of any kind, and ASCII is not liable for any losses or damages of any kind resulting from the use of this software program. ASCII warrants to the original purchaser of ninety (90) days to either repair or replace, at its option, any defective product, with proof of date of purchase, at its factory.

This warranty is not applicable to any damage caused by unauthorized use, misuse, or unreasonable use, mistreatment or neglect. THIS WARRANTY AND ALL OTHER REPRESENTATIONS OR CLAIMS OF ANY NATURE SHALL BE BINDING ON OR OBLIGATE ASCII. ANY IMPLIED WARRANTIES APPLICABLE TO THIS SOFTWARE PRODUCT, INCLUDING WARRANTIES OF MERCHANTABILITY AND FITNESS FOR A PARTICULAR PURPOSE, ARE LIMITED TO THE NINETY (90) DAY PERIOD DESCRIBED ABOVE. IN NO EVENT WILL ASCII BE LIABLE FOR ANY SPECIAL INCIDENTAL OR CONSEQUENTIAL DAMAGES RESULTING FROM POSSESSION, USE OR MALFUNCTION OF THIS ASCII SOFTWARE PRODUCT. Some states do not allow limitations as to how long an implied warranty lasts and/or exclusions or limitations of incidental or consequential damages, therefore the above limitations and/or exclusions of liability may not apply to you. This warranty gives you specific rights, and you may also have other rights which vary from state to state.

ASCII Entertainment Software, Inc., 366-A Lakeside Drive, Foster City, CA 94404, (415) 570-7005.



ASCIIWARE

ASCII

ASCII ENTERTAINMENT
SOFTWARE, INC.
366A LAKESIDE DR.
FOSTER CITY, CA 94404
(415) 570-7005

Printed in Japan